



MURDER AND NON-NEGLIGENT MANSLAUGHTER

Murder and non-negligent manslaughter are described by UCR as the willful (non-negligent) killing of one human being by another — or a death that results from the commission of another criminal act.

Murder — “1. A person is guilty of murder if: A. He intentionally or knowingly causes the death of another human being; B. He engages in conduct which manifests a depraved indifference to the value of human life ...; or C. ... causes another human being to commit suicide by the use of force, duress or deception.” M.R.S.A. Title 17-A, § 201

Felony Murder — “1. A person is guilty of felony murder if acting alone or with one or more other persons in the commission or attempt to commit immediate flight after committing or attempting to commit ... [another felony offense], he or another participant in fact causes the death of another human being ...” M.R.S.A. Title 17-A, § 202

Manslaughter — “1. A person is guilty of manslaughter if he: B. ... causes the death of another human being ... while under the influence of extreme anger or extreme fear ...” M.R.S.A. Title 17-A, § 203

Not included in the count for this offense classification are deaths caused by negligence, suicide, or accident. Although manslaughter by negligence is recorded on the “offenses known to police” form along with murder, it is not considered an index offense and is not discussed in this report. Attempts to murder or assaults to murder are scored as aggravated assaults and not murder.

Crime Clock



Trend

Year	2004	2005	2006	2007	2008	2004–2008
Number reported	19	19	21	21	31	
% change from previous year	11.8%	—	10.5%	—	47.6%	
						% change 63.2%
Rate per 1,000	0.01	0.01	0.02	0.02	0.02	
% change from previous year	—	—	100.0%	—	—	
						% change 100.0%

Characteristics — 2008

Victim-Offender Relationship

Non-Stranger to Non-Stranger	87.1%
Stranger to Stranger	0.0%
Unknown	12.9%

Months of Highest Occurrence

February, April	16.1%
March	12.9%
July, August	9.7%

Type of Weapon Used

Firearm	38.7%
Knife/Cutting Instrument.....	29.0%
Other Dangerous Weapon.....	0.0%
Hands, Fists, Feet	32.3%
Other/Undetermined	0.0%

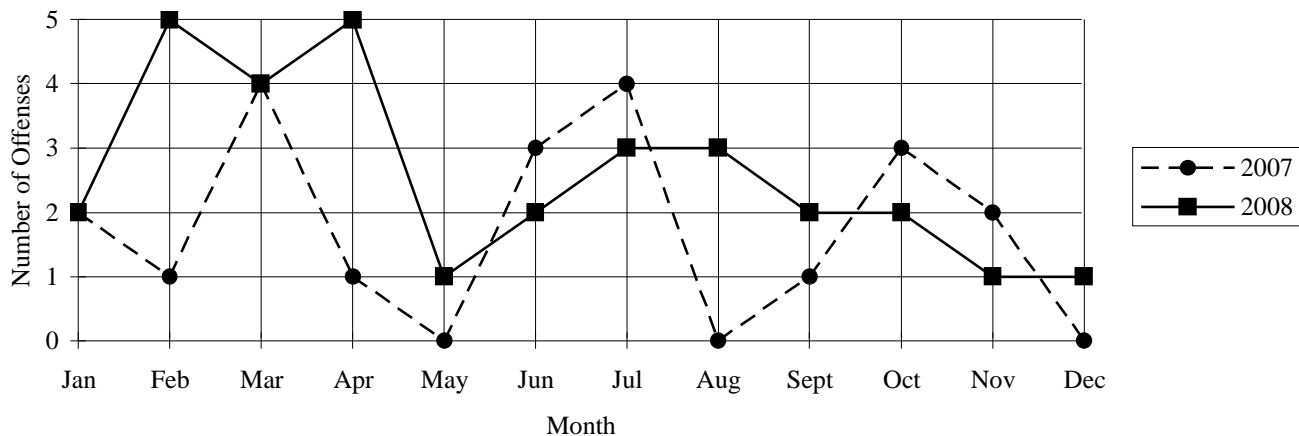
Value of Property Stolen during Offense

Total	\$0.00
Per Incident Average.....	\$0.00

Clearance Rate

25 Offenses Cleared.....	80.6%
Arrests/Crime Ratio.....	0.68

***Murder & Non-Negligent Manslaughter — Comparative Data
2007-2008***



Profile of Persons Arrested — 21 Arrests

Age

17 and under.....	4.8%
18-24.....	33.3%
25-29.....	14.3%
30-34.....	4.8%
35-39.....	4.8%
40 and over.....	38.1%

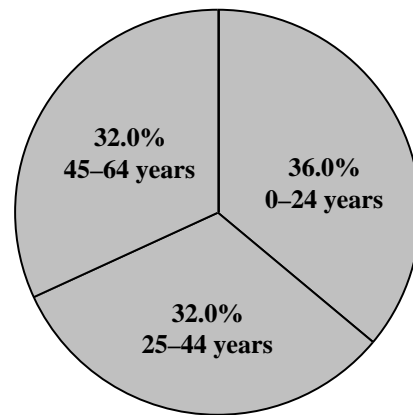
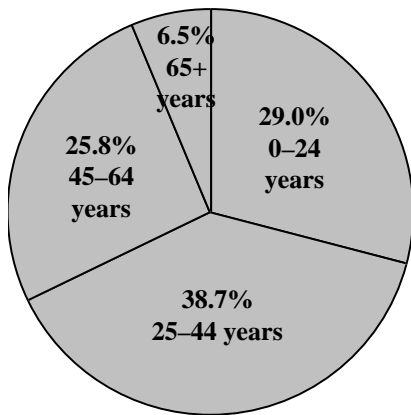
Sex

Male.....	90.5%
Female.....	9.5%

3 offenders committed suicide

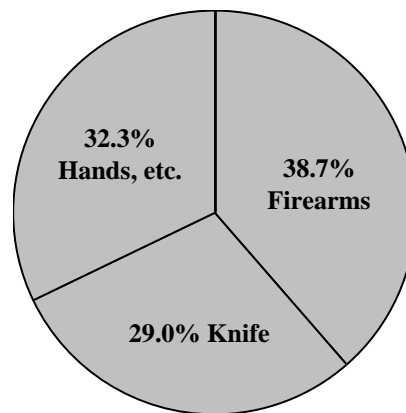
Murder Distribution by Age and Sex

Age of Victims	Male	Female	Total	Age of Offenders	Male	Female	Total
0-14 years	3	2	5	0-14 years	—	—	—
15-24 years	3	1	4	15-24 years	9	—	9
25-34 years	4	1	5	25-34 years	3	1	4
35-44 years	5	2	7	35-44 years	2	2	4
45-54 years	3	1	4	45-54 years	5	1	6
55-64 years	3	1	4	55-64 years	2	—	2
65+ years	—	2	2	65+ years	—	—	—
Total	21	10	31	Total	21	4	25



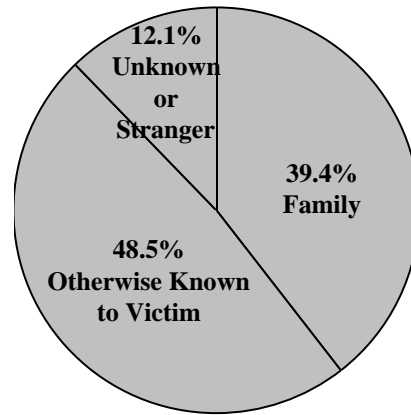
Murder Distribution by Weapon

Weapon	Number	% of Total
Firearm	12	38.7%
Knife, Cutting Instrument	9	29.0%
Hands, Fists, Feet	10	32.3%
Other/Unknown	—	—
Total	31	100.0%



Murder Distribution by Relationship (Victim to Offender)

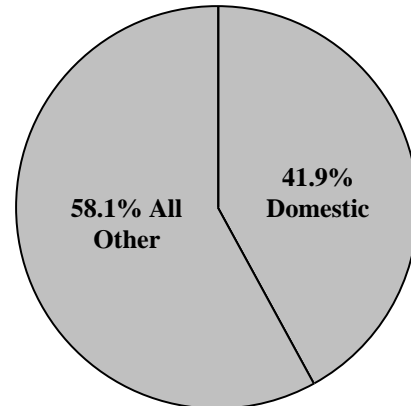
Relationship*	Number	% of Total
Husband	3	9.1%
Son	2	6.1%
Daughter	2	6.1%
Father	1	3.0%
Mother	2	6.1%
Brother	2	6.1%
Sister	1	3.0%
Total Family	13	39.4%
Girlfriend/Boyfriend	3	9.1%
Child in Care	1	3.0%
Acquaintance	12	36.4%
Unknown	4	12.1%
Total Other	20	60.6%
TOTAL	33	100.0%



**Number of relationships may not agree with number of victims due to instances of multiple offenders or multiple victims.*

Murder Distribution by Circumstances

Circumstance**	Number	% of Total
Felony Total*	—	—
Domestic Conflict	13	41.9%
Child Abuse/Neglect	5	16.1%
Drug Related	3	9.7%
Other	7	22.6%
Unknown	3	9.7%
Other than Felony Total	31	100.0%
TOTAL	31	100.0%



**Felony murder is defined as a killing which occurs in conjunction with the commission of another crime such as a robbery, arson, sexual assault or other felonious activities.*

***Due to the unlimited set of possible circumstances surrounding homicides, it is difficult to provide a clear-cut or precise statistical category. In the intent of uniformity, the number of circumstance categories has been kept to a minimum. Caution is suggested in drawing generalizations from the data without more deliberate analysis. This table makes no attempt to analyze the motives of offenders, but rather to display general circumstances surrounding the events.*



FORCIBLE RAPE

Forcible rape is the carnal knowledge of a female forcibly and against her will.

“A person is guilty of gross sexual assault if that person engages in a sexual act (direct genital contact) with another person and the person submits as a result of compulsion.” M.R.S.A. Title 17-A, § 253

This category is broken down into two categories: Rape by Force, and Attempted Forcible Rape. Carnal abuse without force (statutory rape) and other sex offenses are not included.

Forcible rape differs from other violent crimes in that the victim, in many cases, is reluctant to report the offense to police. The investigation by police, medical examination, court procedure, embarrassment and fear of any accompanying stigma have a deterrent effect on the victim’s willingness to make the offense known to police.

Maine has experienced increased availability in services such as rape crisis centers providing 24-hour hot lines and counselors, witness/victim assistants in district attorneys’ offices, improved medical practices and increased sensitivity by law enforcement personnel. The increased number of offenses identified in this report may be, in part, influenced by the increasing confidence of victims in the criminal justice system.

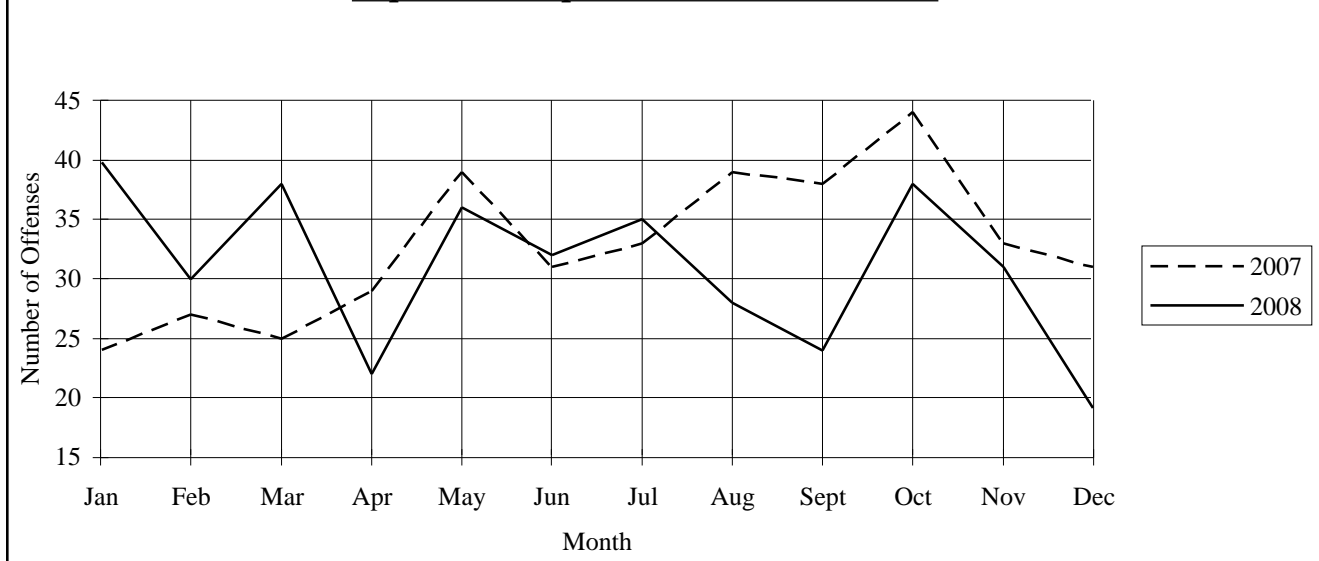
Crime Clock



Trend

Year	2004	2005	2006	2007	2008	2004-2008
Number reported	313	322	340	393	373	
% change from previous year	-10.8%	2.9%	5.6%	15.6%	-5.1%	% change 19.2%
Rate per 1,000	0.24	0.24	0.26	0.30	0.28	
% change from previous year	-11.1%	—	8.3%	15.4%	-6.7%	% change 16.7%

Rapes — Comparative Data 2007-2008



Characteristics — 2008	
Type of Offense	
Rape by Force	98.4%
Attempts to Rape.....	1.6%
Months of Highest Occurrence	
January	10.7%
March, October	10.2%
May	9.7%
Value of Property Stolen during Offense	
Total.....	\$0.00
Per Incident Average	\$0.00
Clearance Rate	
140 Offenses Cleared.....	37.5%
Arrests/Crime Ratio.....	0.20

Profile of Persons Arrested 75 Arrests	
Age	
17 and under.....	13.3%
18–24.....	25.3%
25–29.....	13.3%
30–34.....	12.0%
35–39.....	12.0%
40 and over.....	24.0%
Sex	
Male.....	98.7%
Female.....	1.3%

Rape by Type of Offense, 2007–2008			
	2007	2008	% change
Forcible Rape	382	367	–3.9%
Attempted Rape	11	6	–45.5%
Totals	393	373	–5.1%



ROBBERY

Robbery is defined by UCR as “the felonious and forcible taking of the property of another against his will by violence or by putting him in fear.” All attempts to rob are included in the UCR report.

“1. A person is guilty of robbery if he commits or at - tempts to commit theft and at the time of his actions: A. He recklessly inflicts bodily injury on another; B. He threatens to use force against any person present with the intent (1) to prevent or overcome resistance to the taking of the prop - erty, ...; or (2) to compel the person in control of the prop - erty to give it up ...; C. He uses physical force on another with the intent enumerated in paragraph B, subparagraphs (1) and (2); D. He intentional -

ly inflicts or attempts to inflict bodily injury on another; or E. He or an accomplice to his knowledge is armed with a dangerous weapon ... ” M.R.S.A. Title 17-A, § 65, 1

Crime Clock

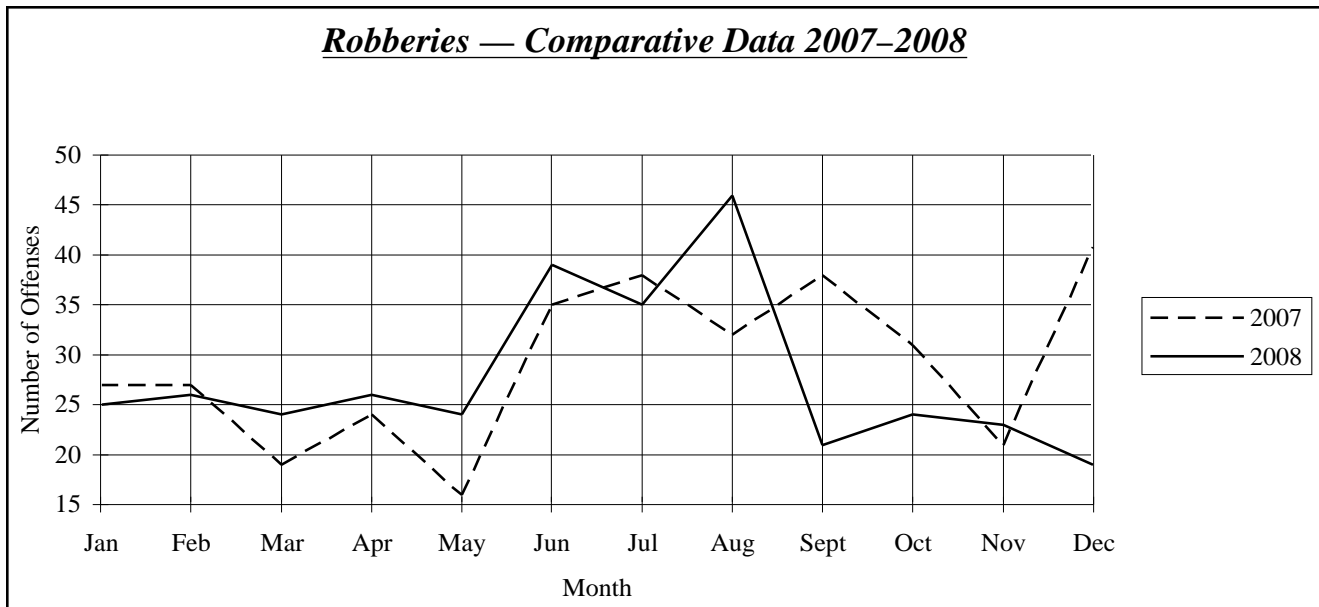


Characteristics — 2008	
Type of Weapon Used	
Firearm.....	16.0%
Knife/Cutting Instrument.....	12.7%
Other Dangerous Weapon.....	10.8%
Hands, Fists, Feet	60.5%
Place of Occurrence	
Street, Alley.....	35.2%
Business Establishment.....	22.3%
Residence	22.9%
Banks.....	3.9%
Miscellaneous.....	15.7%
Months of Highest Occurrence	
August	13.9%
June	11.7%
July	10.5%
Value of Property Stolen during Offense	
Total.....	\$120,599.00
Per Incident Average.....	\$363.25
Clearance Rate	
134 Offenses Cleared.....	40.4%
Arrests/Crime Ratio.....	0.53

<i>Trend</i>						
Year	2004	2005	2006	2007	2008	2004-2008
Number reported	288	323	383	349	332	
% change from previous year	-0.3%	12.2%	18.6%	-8.9%	-4.9%	% change 15.3%
Rate per 1,000	0.22	0.24	0.29	0.26	0.25	
% change from previous year	—	9.1%	20.8%	-10.3%	-3.8%	% change 13.6%

<i>Profile of Persons Arrested</i>	
<i>176 Arrests</i>	
Age	
17 and under	13.6%
18-24.....	46.0%
25-29.....	18.8%
30-34.....	10.8%
35-39.....	5.1%
40 and over.....	5.7%
Sex	
Male.....	84.1%
Female.....	15.9%

<i>Robbery by Weapon Type, 2007-2008</i>			
	2007	2008	% change
Firearm	73	53	-27.4%
Knife	36	42	16.7%
Other Weapon	33	36	9.1%
Strong Arm	207	201	-2.9%
Totals	349	332	-4.9%



<i>Robbery by Classification, 2007-2008</i>						
Classification	Number of Offenses			Value Stolen		
	2007	2008	% change	2007	2008	% change
Highway	108	117	8.3%	\$17,909.00	\$34,624.00	93.3%
Commercial House	54	44	-18.5%	\$148,443.00	\$17,922.00	-87.9%
Gas/Service Station	13	4	-69.2%	\$6,976.00	\$760.00	-89.1%
Convenience Store	38	26	-31.6%	\$12,777.00	\$4,572.00	-64.2%
Residence	68	76	11.8%	\$116,416.00	\$25,600.00	-78.0%
Bank/Lending Inst.	12	13	8.3%	\$21,840.00	\$25,033.00	14.6%
Miscellaneous	56	52	-7.1%	\$611,791.00	\$12,088.00	-98.0%
Totals	349	332	-4.9%	\$936,152.00	\$120,599.00	-87.1%

<i>Robbery Type by County</i>								
County	Highway	Commercial House	Gas Station	Convenience Store	Residence	Bank	Misc.	Total
Androscoggin								
2008	15	7	—	2	14	1	9	48
2007	12	11	2	5	8	1	7	46
Aroostook								
2008	1	1	—	1	2	—	2	7
2007	2	—	—	1	10	—	4	17
Cumberland								
2008	63	27	1	11	29	—	21	152
2007	55	30	3	19	15	4	20	146
Franklin								
2008	—	1	—	—	1	—	—	2
2007	1	1	—	—	1	1	1	5
Hancock								
2008	1	—	—	—	1	—	—	2
2007	—	—	—	—	—	—	2	2
Kennebec								
2008	4	3	—	—	5	2	3	17
2007	7	2	2	1	9	1	4	26
Knox								
2008	—	—	—	—	—	—	—	—
2007	2	—	—	—	—	—	1	3
Lincoln								
2008	—	—	—	—	—	—	—	—
2007	—	1	—	—	2	—	1	4
Oxford								
2008	1	—	—	1	—	2	2	6
2007	—	—	1	—	1	—	1	3
Penobscot								
2008	12	4	1	4	11	—	6	38
2007	14	7	1	4	6	—	2	34
Piscataquis								
2008	—	—	—	1	—	—	—	1
2007	—	—	—	—	—	—	—	—
Sagadahoc								
2008	—	—	—	—	2	—	2	4
2007	—	—	1	—	—	—	—	1
Somerset								
2008	1	—	1	1	4	1	1	9
2007	2	—	—	3	1	—	1	7
Waldo								
2008	—	—	—	—	—	—	—	—
2007	—	—	—	1	—	—	—	1
Washington								
2008	—	—	—	1	—	—	—	1
2007	—	—	—	—	1	—	—	1
York								
2008	19	1	1	4	7	7	6	45
2007	13	2	3	4	14	5	12	53



AGGRAVATED ASSAULT

An aggravated assault is an attempt or offer, with unlawful force or violence, to do physical injury to another. This type of assault is usually accompanied by the use of a weapon or other means likely to produce death or serious bodily injury. Attempts are included since it is not necessary that an injury result when a gun, knife, or other weapon is used which could and probably would result in serious personal injury if the crime is successfully completed. Assaults with personal weapons (hands, fists, feet) are scored as aggravated if there is personal injury requiring more than simple first aid to treat.

Aggravated Assault: "1. A person is guilty of aggravated assault if he ... causes: A. Serious bodily injury to another; or, B. Bodily injury to another with use of a dangerous weapon; or, C. Bodily injury to another under circumstances manifesting extreme indifference to the value of human life." M.R.S.A. Title 17-A, § 208

Assault while Hunting: "1. A person is guilty of assault while hunting if ... he, with criminal negligence, causes bodily injury to another with the use of a dangerous weapon." M.R.S.A. Title 17-A, § 208-A

Assault on an Officer: "1. A person is guilty of assault on an officer if: A. ... causes bodily injury to a law enforcement officer while the officer is in the performance of his official duties; or, B. While in custody in a penal institution or other facility pursuant to an arrest or ... court order, he commits an assault on a member of the staff of the institution ..." M.R.S.A. Title 17-A, § 752-A

Not included in this class are simple (non-aggravated) assaults. Simple assaults are non-index offenses, although a record is kept of these assaults on an "offenses known to police" form. During 2008 there were 11,570 simple assaults reported (+2.7% from 2007), with a clearance rate of 72.3%. These simple assaults are included in the report of domestic assaults, and assaults on law enforcement officers.

Crime Clock



Trend

Year	2004	2005	2006	2007	2008	2004-2008
Number reported	728	826	780	793	813	
% change from previous year	-3.6%	13.5%	-5.6%	1.7%	2.5%	% change 11.7%
Rate per 1,000	0.55	0.63	0.59	0.60	0.62	
% change from previous year	-5.2%	14.5%	-6.3%	1.7%	3.3%	% change 12.7%

Characteristics — 2008

Type of Weapon Used

Firearms	7.5%
Knife/Cutting Instrument	25.3%
Other Dangerous Weapons	26.1%
Hands, Fists, Feet.....	41.1%

Months of Highest Occurrence

November	10.3%
October	10.0%
December	9.3%

Clearance Rate

571 Offenses Cleared.....	72.4%
Arrests/Crime Ratio	0.81

Profile of Persons Arrested 656 Arrests

Age

17 and under	13.3%
18-24.....	29.9%
25-29.....	14.9%
30-34.....	10.2%
35-39.....	8.7%
40 and over.....	23.0%

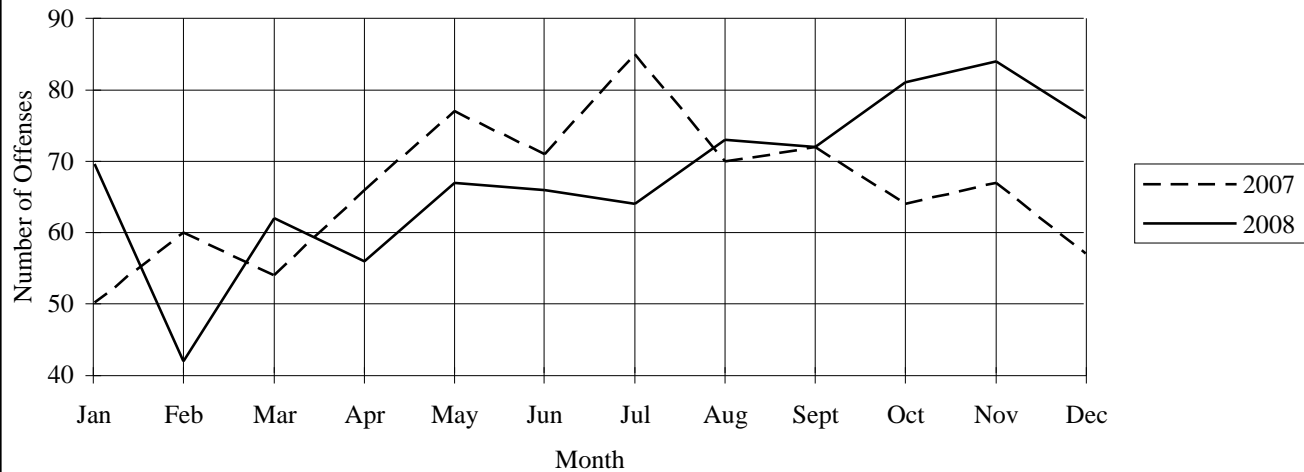
Sex

Male.....	82.6%
Female.....	17.4%

Aggravated Assault by Weapon Type, 2007-2008

	Firearm	Knife	Other Weapon	Strong Arm	Totals
2007	44	151	250	348	793
2008	61	206	212	334	813
% change	38.6%	36.4%	15.2%	-4.0%	2.5%

Aggravated Assaults — Comparative Data 2007–2008



DOMESTIC VIOLENCE

Due to problems of abuse and domestic violence between family or household members, the 109th Maine Legislature enacted a law entitled “An Act Concerning Abuse between Household and Family Members.” The law, Chapter 578 of the Public Laws of 1979, mandates the reporting of domestic violence data by law enforcement agencies and the collection of such data (Title 19, § 770 [1]) by the Uniform Crime Reporting Unit, State Bureau of Identification, Department of Public Safety.

During 2008:

- Of a grand total of 12,383 reported assaults, 5,311 or 42.9% were identified as occurring between household

or family members.

- Domestic assaults decreased 8.0% (460 offenses) from the 2007 figure of 5,771.
- Law enforcement agencies cleared 4,451 domestic assaults for a clearance rate of 83.8%.
- Of the 5,311 domestic assaults, 97.3% involved personal weapons (hands, fists, feet).

Crime Clock



Breakdown of Reported Domestic Assaults by County, 2007–2008

County	2007 Number of Offenses	2007 Percent of Total	2008 Number of Offenses	2008 Percent of Total	Percent Change Offenses
Androscoggin	768	13.3%	620	11.7%	-19.3%
Aroostook	229	4.0%	186	3.5%	-18.8%
Cumberland	1,122	19.4%	1,037	19.5%	-7.6%
Franklin	147	2.5%	140	2.6%	-4.8%
Hancock	94	1.6%	109	2.1%	16.0%
Kennebec	710	12.3%	676	12.7%	-4.8%
Knox	131	2.3%	110	2.1%	-16.0%
Lincoln	116	2.0%	121	2.3%	4.3%
Oxford	281	4.9%	255	4.8%	-9.3%
Penobscot	473	8.2%	505	9.5%	6.8%
Piscataquis	49	0.8%	28	0.5%	-42.9%
Sagadahoc	86	1.5%	88	1.7%	2.3%
Somerset	340	5.9%	228	4.3%	-32.9%
Waldo	114	2.0%	112	2.1%	-1.8%
Washington	88	1.5%	94	1.8%	6.8%
York	1,023	17.7%	1,002	18.9%	-2.1%
Totals	5,771	100.0%	5,311	100.0%	-8.0%

***Domestic Violence Assaults
Comparison Data 2007–2008***

Situations/Relationships	2007 Number of Offenses	2007 % of Total	2008 Number of Offenses	2008 % of Total
Male Assault on Female				
Firearm	13	.2	5	<.1
Knife, Cutting Instrument	15	.3	20	.4
Other Dangerous Weapon	35	.6	37	.7
Hands, Aggravated Injury	81	1.4	52	1.0
Hands, Not Aggravated	3,215	55.7	2,883	54.3
Total Male Assault on Female	3,359	58.2	2,997	56.4
Female Assault on Male				
Firearm	2	<.1	3	<.1
Knife, Cutting Instrument	20	.3	21	.4
Other Dangerous Weapon	18	.3	14	.3
Hands, Aggravated Injury	16	.3	9	.2
Hands, Not Aggravated	1,040	18.0	1,020	19.2
Total Female Assault on Male	1,096	19.0	1,067	20.1
Parent Assault on Child				
Firearm	1	<.1	—	<.1
Knife, Cutting Instrument	1	<.1	2	<.1
Other Dangerous Weapon	7	.1	6	.1
Hands, Aggravated Injury	11	.2	15	.3
Hands, Not Aggravated	468	8.1	432	8.1
Total Parent Assault on Child	488	8.5	455	8.6
Child Assault on Parent				
Firearm	—	<.1	1	<.1
Knife, Cutting Instrument	7	.1	3	<.1
Other Dangerous Weapon	6	.1	4	<.1
Hands, Aggravated Injury	3	<.1	5	<.1
Hands, Not Aggravated	200	3.5	215	4.0
Total Child Assault on Parent	216	3.7	228	4.3
All Other Domestic Assaults				
Firearm	2	<.1	8	.2
Knife, Cutting Instrument	5	<.1	8	.2
Other Dangerous Weapon	15	.3	13	.2
Hands, Aggravated Injury	7	.1	14	.3
Hands, Not Aggravated	583	10.1	521	9.8
Total All Other Domestic Assaults	612	10.6	564	10.6
Grand Total All Domestic Assaults	5,771	100.0	5,311	100.0
Domestic Assaults/Type of Weapon				
Firearm	18	.3	17	.3
Knife, Cutting Instrument	48	.8	54	1.0
Other Dangerous Weapon	81	1.4	74	1.4
Hands, Aggravated Injury	118	2.0	95	1.8
Hands, Not Aggravated	5,506	95.4	5,071	95.5
Total Domestic Assaults	5,771	100.0	5,311	100.0
Total All Domestic Assaults	5,771	47.9	5,311	42.9
Total All Reported Assaults	12,057	100.0	12,383	100.0