



BURGLARY

Burglary, also known as breaking and entering, is “the unlawful entry or attempted forcible entry of any structure to commit a felony or larceny.”

“A person is guilty of burglary if he enters or surreptitiously remains in a structure, knowing that he is not licensed or privileged to do so, with the intent to commit a crime therein.” M.R.S.A. Title 17-A, § 401

Crime Clock

1 Burglary
every
83 minutes,
44 seconds

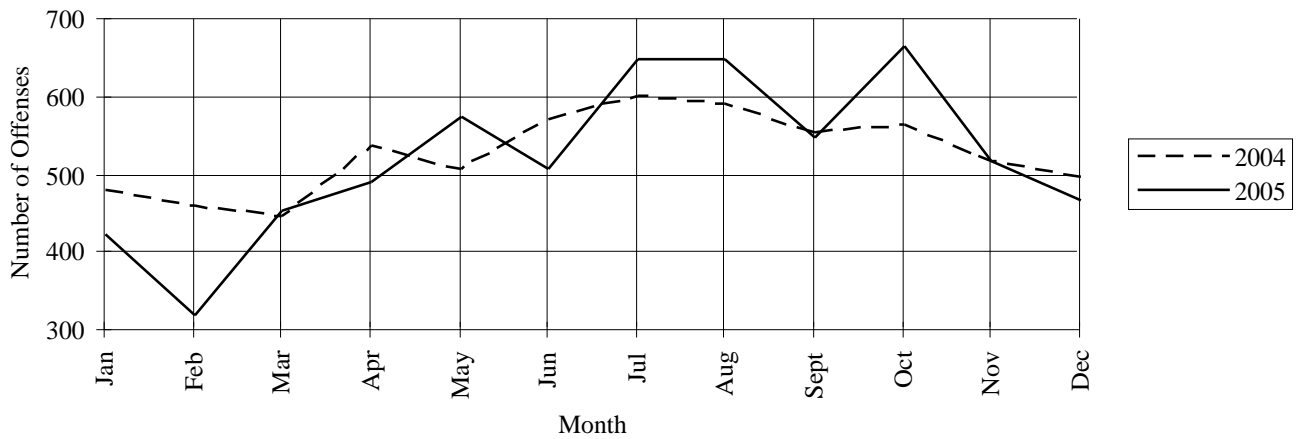
Year	Trend					2001–2005
	2001	2002	2003	2004	2005	
Number reported	6,878	6,944	6,571	6,344	6,277	
% change from previous year	1.8%	1.0%	-5.4%	-3.5%	-1.1%	% change -8.7%
Rate per 1,000	5.35	5.36	5.03	4.82	4.76	
% change from previous year	0.9%	0.2%	-6.2%	-4.2%	-1.2%	% change -11.0%

Characteristics — 2005	
Place of Occurrence	
Residence.....	67.5%
Non-Residence.....	32.5%
Type of Entry	
Forcible Entry.....	53.3%
Unlawful Entry — No Force.....	41.1%
Attempted Forcible Entry.....	5.6%
Time of Day	
Day — 6 a.m.–6 p.m.....	37.6%
Night — 6 p.m.–6 a.m.....	31.4%
Unknown.....	31.0%
Months of Highest Occurrence	
October	10.6%
August	10.4%
July	10.3%
Value of Property Stolen during Offense	
Total.....	\$7,920,807.00
Per Incident Average.....	\$1,261.88
Clearance Rate	
1,318 Offenses Cleared.....	21.0%
Arrests/Crime Ratio.....	0.20

Profile of Persons Arrested 1,233 Arrests	
Age	
17 and under.....	34.2%
18–24.....	38.8%
25–29.....	10.5%
30–34.....	5.5%
35–39.....	3.2%
40 and over.....	7.8%
Sex	
Male.....	85.5%
Female.....	14.5%

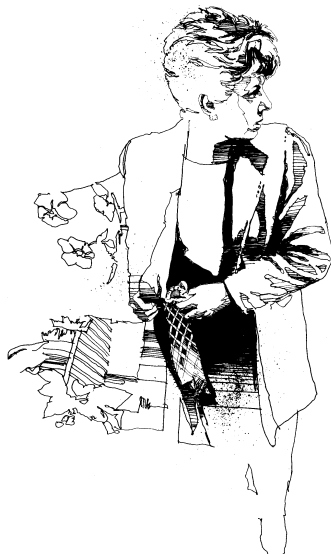
Type of Entry, 2004–2005			
	2004	2005	% change
Forcible Entry	3,303	3,346	1.3%
Unlawful Entry, no force	2,685	2,578	-4.0%
Attempted Forcible Entry	356	353	-0.8%
Totals	6,344	6,277	-1.1%

Burglaries — Comparative Data 2004–2005



Burglary by Time of Day, 2004–2005

	Number of Offenses			Estimated Value of Property Loss		
	2004	2005	% change	2004	2005	% change
Residence						
6 p.m.–6 a.m.	1,185	1,075	-9.3%	\$831,775	\$943,666	13.5%
6 a.m.–6 p.m.	1,660	1,848	11.3%	\$1,628,670	\$2,094,819	28.6%
Unknown	1,399	1,312	-6.2%	\$1,258,767	\$3,031,323	140.8%
Subtotals	4,244	4,235	-0.2%	\$3,719,212	\$6,069,808	63.2%
Non-Residence						
6 p.m.–6 a.m.	923	896	-2.9%	\$707,315	\$861,966	21.9%
6 a.m.–6 p.m.	513	511	-0.4%	\$420,180	\$382,248	-9.0%
Unknown	664	635	-4.4%	\$585,813	\$606,785	3.6%
Subtotal	2,100	2,042	-2.8%	\$1,713,308	\$1,850,999	8.0%
Grand Totals	6,344	6,277	-1.1%	\$5,432,520	\$7,920,807	45.8%



LARCENY-THEFT

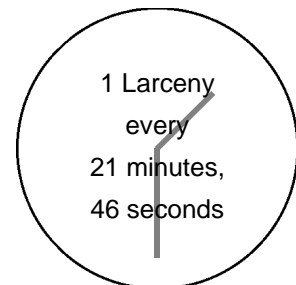
Larceny is the unlawful taking of the property of another with the intent to deprive him of ownership.

Maine has consolidated conduct denoted as Theft under Title 17-A, Chapter 15, § 351, Consolidation, embracing numerous separate crimes previously known as larceny, embezzlement, false pretenses, extortion, blackmail, shoplifting, and receiving stolen property. In properly classifying/scoring these offenses under UCR guidelines, certain offenses fall under Larceny-Theft, while others more appropriately fit under Part II offense definitions such as Fraud, Embezzlement, Stolen Property or All Other Offenses.

Theft by unauthorized taking or transfer — “1. A person is guilty of theft if he obtains or exercises unauthorized control over the property of another with intent to deprive him thereof.” M.R.S.A. Title 17-A, § 353

Burglary of a motor vehicle — “A person is guilty of theft if the actor enters a motor vehicle knowing the actor is not licensed or privileged to do so, with the intent to commit a crime therein (and that crime is theft).” M.R.S.A. Title 17-A, § 405

Crime Clock



<i>Trend</i>						
Year	2001	2002	2003	2004	2005	2001–2005
Number reported	24,515	24,496	24,064	24,087	24,153	
% change from previous year	3.0%	-0.1%	-1.8	0.1%	0.3%	
						% change -1.5%
Rate per 1,000	19.05	18.92	18.43	18.29	18.31	
% change from previous year	2.0%	-0.7%	-2.6	-0.8%	0.1%	
						% change -3.9%

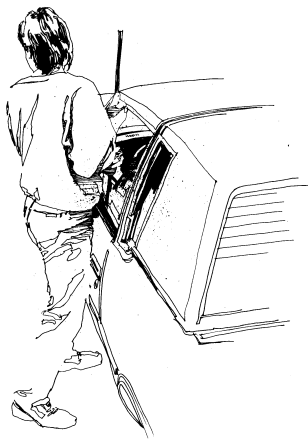
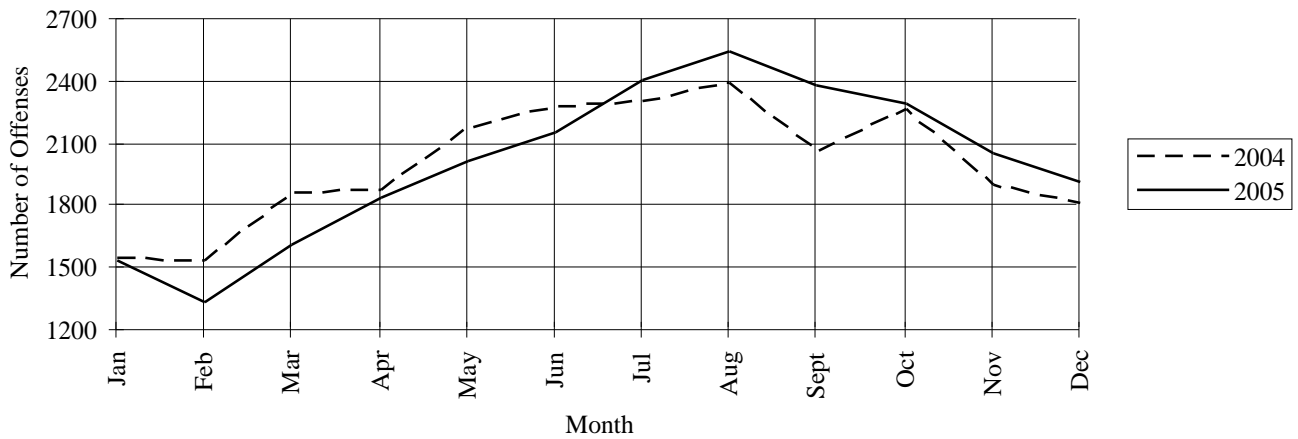
<i>Characteristics — 2005</i>	
Type of Criminal Activity	
All Other	41.4%
From Motor Vehicles	19.5%
From Buildings	15.8%
Shoplifting	13.6%
Bicycles	4.6%
Motor Vehicle Parts & Accessories	3.8%
Purse-Snatching	0.5%
From Coin-Op Machines	0.4%
Pocket-Picking	0.3%
Value per Incident	
Under \$50	43.8%
Over \$200	31.3%
\$50 to \$200	24.9%
Months of Highest Occurrence	
August	10.6%
July	10.0%
September	9.9%
Value of Property Stolen during Offense	
Total.....	\$12,049,472.00
Per Incident Average.....	\$498.88
Clearance Rate	
6,690 Offenses Cleared.....	27.7%
Arrests/Crime Ratio.....	0.23

Profile of Persons Arrested
5,582 Arrests

Age	
17 and under.....	30.4%
18–24.....	32.9%
25–29.....	10.6%
30–34.....	6.2%
35–39.....	6.1%
40 and over.....	13.8%
Sex	
Male.....	58.4%
Female.....	41.6%

<i>Larceny by Classification, 2004–2005</i>						
	Number of Offenses			Value Stolen		
	2004	2005	% change	2004	2005	% change
Pocket-Picking	52	68	30.8%	\$10,234	\$12,131	18.5%
Purse-Snatching	215	124	-42.3%	\$42,664	\$23,518	-44.9%
Shoplifting	3,328	3,283	-1.4%	\$424,275	\$362,009	-14.7%
From Motor Vehicles	4,539	4,711	3.8%	\$1,364,515	\$1,472,340	7.9%
M/V Parts & Accessories	992	923	-7.0%	\$418,032	\$407,807	-2.4%
Bicycles	1,053	1,109	5.3%	\$220,173	\$287,313	30.5%
From Buildings	3,834	3,822	-0.3%	\$2,476,869	\$2,989,462	20.7%
From Coin-Op Machines	171	107	-37.4%	\$46,477	\$54,834	18.0%
All Other	9,903	10,006	1.0%	\$6,343,699	\$6,440,058	1.5%
Totals	24,087	24,153	0.3%	\$11,346,938	\$12,049,472	6.2%

Larceny-Theft — Comparative Data 2004–2005



MOTOR VEHICLE THEFT

Uniform Crime Reporting defines Motor Vehicle Theft as the larceny or attempted larceny of a motor vehicle, including “joy riding.” Excluded from this class is a reported offense where there is lawful access to the vehicle, such as a family situation, or unauthorized use by others with lawful access, such as with employees.

Motor vehicles are defined by UCR as self-propelled vehicles that run on the surface of the land and not on rails, such as automobiles, trucks, buses, motorcycles, motor scooters, snowmobiles, ATVs, etc. Not included are farm equipment, construction equipment, airplanes, motorboats.

Unauthorized use of property — “1. A person is guilty of theft if: A. Knowing that he does not have the consent of the owner, he takes, operates or exercises control over a vehicle, or knowing that the vehicle has been wrongfully obtained, he rides in such vehicle.” M.R.S.A. Title 17-A § 360



Trend

Year	2001	2002	2003	2004	2005	2001–2005
Number reported	1,667	1,418	1,450	1,305	1,344	
% change from previous year	26.6%	-14.9%	2.3%	-10.0%	3.0%	% change -19.4%
Rate per 1,000	1.30	1.10	1.11	0.99	1.02	
% change from previous year	26.2%	-15.4%	0.9%	-10.8%	2.9%	% change -21.6%

Type of Vehicle 2004–2005

	Auto- mobiles	Trucks/ Buses	Other Vehicles	Totals
2004	881	162	262	1,305
2005	906	169	269	1,344
% change	2.8%	4.3%	2.7%	3.0%

Locally Stolen M/Vs Recovered 2005

	No. Recovered	% Recovered
Recovered Locally	526	39.1%
Recovered — Other Jurisdictions	272	20.2%
Total Recovered	798	59.4%
Not Recovered	546	40.6%

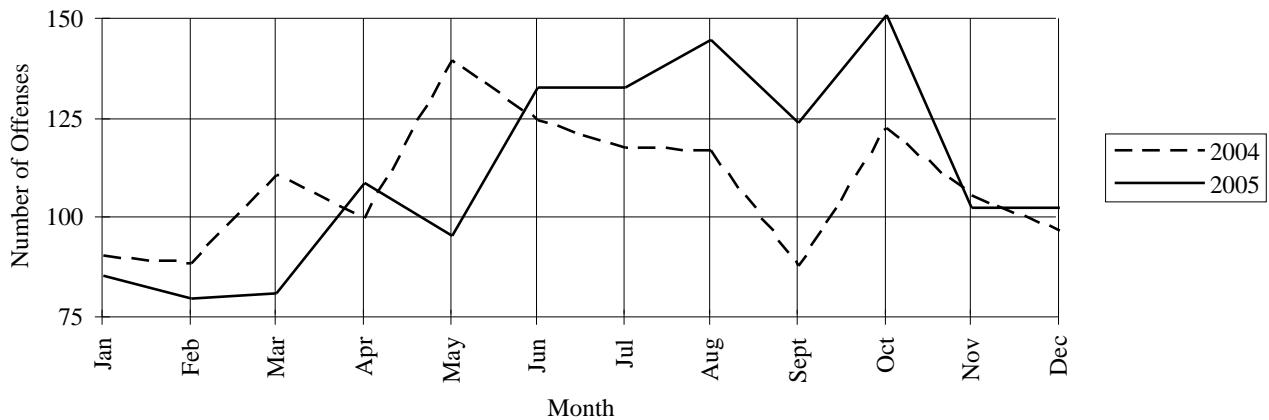
Characteristics — 2005

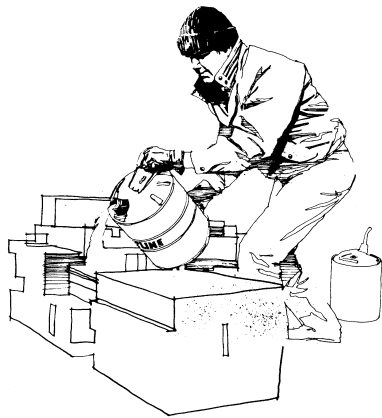
Type of Vehicle	Value of Property Stolen during Offense
Automobiles.....67.4%	Total.....\$8,175,761.00
Other Vehicles20.0%	Per Incident Average.....\$6,083.16
Trucks/Buses12.6%	Number of Locally Stolen M/Vs Recovered798
Months of Highest Occurrence	Value of Property Recovered
October11.2%	Total\$5,087,774.00
August10.8%	Clearance Rate
June, July9.9%	440 Offenses Cleared.....32.7%
	Arrests/Crime Ratio.....0.23

**Profile of Persons Arrested
314 Arrests**

Age	
17 and under.....	32.5%
18–24.....	33.8%
25–29.....	11.8%
30–34.....	5.1%
35–39.....	5.4%
40 and over.....	11.5%
Sex	
Male.....	84.1%
Female.....	15.9%

Stolen Vehicles — Comparative Data 2004–2005



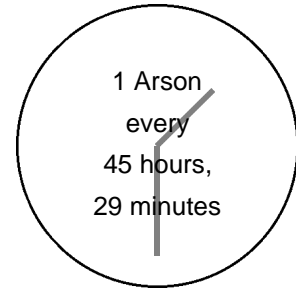


ARSON

Arson is defined by the Uniform Crime Reporting program as any willful or malicious burning or attempt to burn, with or without intent to defraud, a dwelling house, public building, motor vehicle or aircraft, personal property of another, etc. Only fires determined through investigation to have been willfully or maliciously set are classified as arson. Fires of suspicious or unknown origins are excluded.

“1. A person is guilty of arson if he starts, causes, or maintains a fire or explosion; A. On the property of another with the intent to damage or destroy property thereon; or B. On his own property or the property of another (1) with the intent to enable any person to collect insurance proceeds for the loss caused by the fire or explosion; or (2) which recklessly endangers any person or the property of another.” M.R.S.A. Title 17-A, § 802.

Crime Clock



Trend

Year	2001	2002	2003	2004	2005	2001–2005
Number reported	212	174	196	192	177	
% change from previous year	8.2%	-17.9%	12.6%	-2.0%	-7.8%	% change -16.5%
Rate per 1,000 population	0.16	0.13	0.15	0.15	0.13	
% change from previous year	6.7%	-18.8%	15.4%	—	-13.3%	% change -18.8%

Characteristics — 2005

Type of Property

Structural.....	44.1%
Mobile.....	18.6%
Other.....	37.3%

Months of Highest Occurrence

September.....	15.3%
April.....	12.4%
July.....	10.7%

Value of Property Damaged

Total.....	\$3,226,971.00
Per Incident Average.....	\$18,231.47

Arrests/Crime Ratio.....0.29

Profile of Persons Arrested 52 Arrests

Age

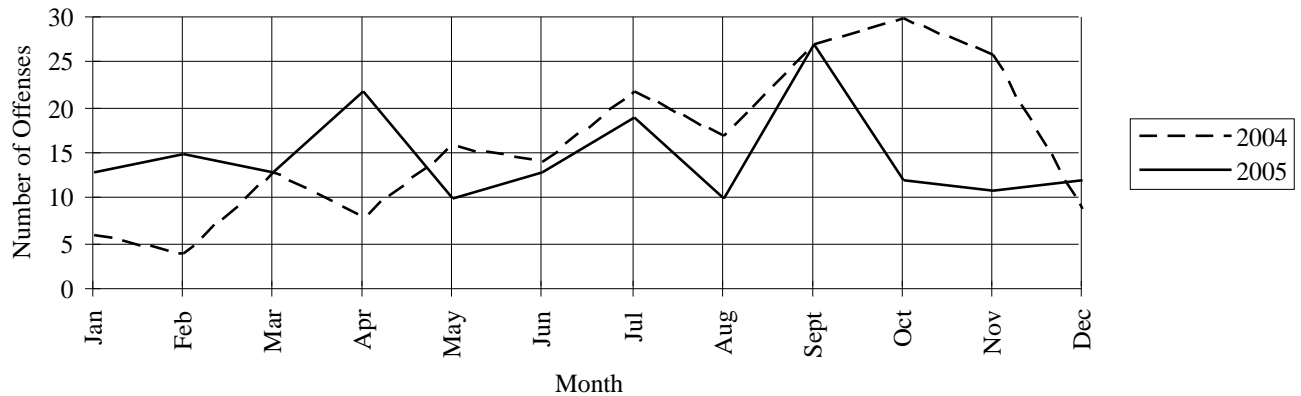
17 and under.....	51.9%
18–24.....	28.8%
25–29.....	1.9%
30–34.....	5.8%
35–39.....	5.8%
40 and over.....	5.8%

Sex

Male.....	86.5%
Female.....	13.5%

Arson by Property Type, 2004–2005

Classification	Number of Offenses			Estimated Value of Property Loss		
	2004	2005	% change	2004	2005	% change
Structural — Residential	62	53	-14.5%	\$191,920	\$509,027	165.2%
Structural — Non-residential	36	25	-30.6%	\$832,542	\$2,561,715	207.7%
Mobile (cars, trailers, boats, etc.)	32	33	3.1%	\$241,600	\$139,669	-42.2%
All other (crops, fields, signs, etc.)	62	66	6.5%	\$473,111	\$16,560	-96.5%
Totals	192	177	-7.8%	\$1,739,173	\$3,226,971	85.5%

Arsons — Comparative Data 2004–2005**Arson Breakdown by County**

County	Number of Offenses			Estimated Value of Property Loss		
	2004	2005	% change	2004	2005	% change
Androscoggin	4	18	350.0%	\$5,075	\$262,610	5,074.6%
Aroostook	2	—	-100.0%	\$1,000	—	-100.0%
Cumberland	41	36	-12.2%	\$220,781	\$68,510	-69.0%
Franklin	1	2	100.0%	—	\$2,200	100.0%
Hancock	3	1	-66.7%	\$105	\$500	376.2%
Kennebec	26	15	-42.3%	\$222,995	\$139,451	-37.5%
Knox	5	3	-40.0%	\$306,725	\$35,200	-88.5%
Lincoln	1	—	-100.0%	\$1,000	—	-100.0%
Oxford	5	4	-20.0%	\$34,800	\$2,550,050	7,227.7%
Penobscot	53	46	-13.2%	\$124,320	\$40,566	-67.4%
Piscataquis	3	—	-100.0%	\$201,200	—	-100.0%
Sagadahoc	6	6	—	—	\$600	100.0%
Somerset	11	5	-54.5%	\$23,552	\$62,803	166.7%
Waldo	—	—	—	—	—	—
Washington	3	—	-100.0%	\$65,100	—	-100.0%
York	28	41	46.4%	\$532,520	\$64,481	-87.9%
Totals	192	177	-7.8%	\$1,739,173	\$3,226,971	85.5%

Note: Arson figures shown by UCR may not agree with figures shown by the Fire Marshal's office due to local departments handling cases informally.