

VIOLENT CRIMES

Crimes of violence involve the element of personal confrontation between the perpetrator and victim and entail the use or threat of violence. By their very nature, violent crimes — murder, rape, robbery and aggravated assault — are considered more serious than property crimes. The total number indicates only the number of incidents reported to police and does not reflect the number of criminals who committed them or the number of injuries inflicted.

During the year 2003, violent crimes showed an increase from the previous year. There were 1,412 reported offenses during 2003 — compared with 1,402 for 2002. This increase of 10 crimes reported represents an increase of 0.7%.

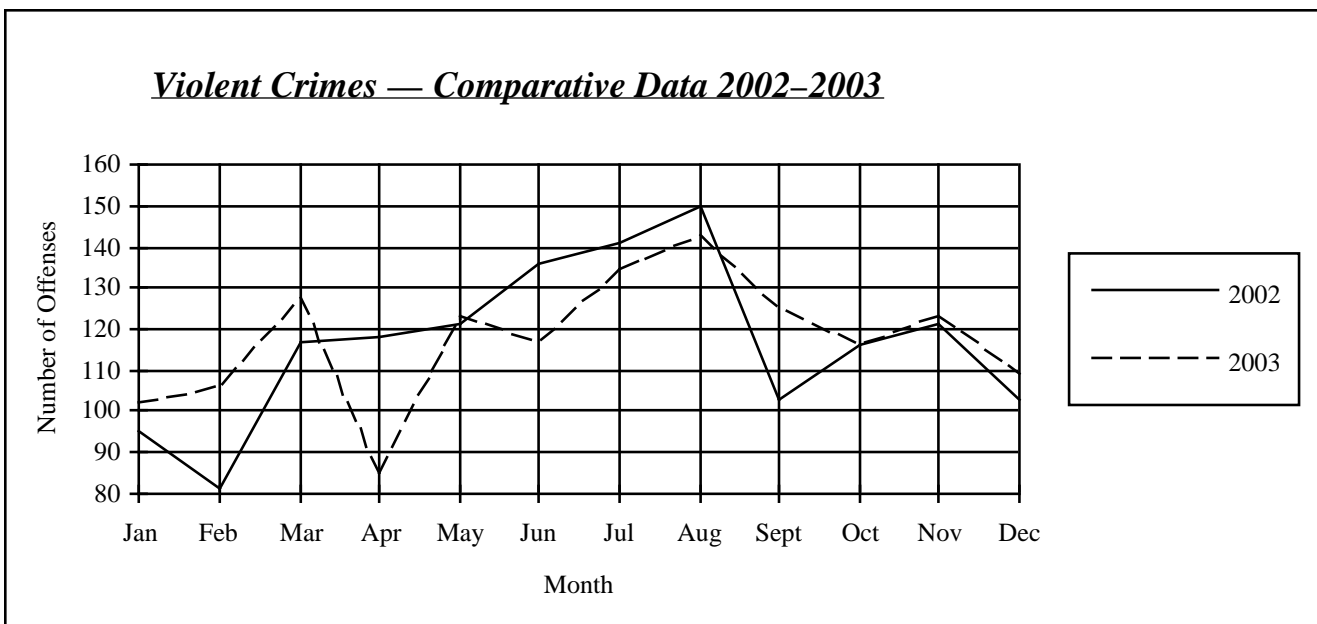
The 2003 crime rate for violent crime is 1.08 offenses per 1,000 population. Violent crimes represent 4.2% of all reported index crimes. Police cleared 878 violent crimes for a 62.2 clearance rate.



Number of Offenses — Comparative Data 2002–2003

	Murder	Rape	Robbery	Aggravated Assault	Totals
2002	14	391	269	728	1,402
2003	17	351	289	755	1,412
Number Change	3	-40	20	27	10
Percent Change	21.4%	-10.2%	7.4%	3.7%	0.7%

Violent Crimes — Comparative Data 2002–2003



Violent Crime by County

(State Violent Crime Rate: 1.08)

