

***PROPERTY CRIMES***

Property crimes include burglary, larceny, motor vehicle theft, and arson. These crimes do not involve the threat of violence, but entail property taken from one by another, or the destruction of property by arson.

Property crimes showed an increase during 2001, rising by 1,192 reported offenses. The 2001 total of 33,272 represents a 3.7% increase from the 2000 figure of 32,080.

Law enforcement agencies cleared 9,035 property crimes during 2001 for a 27.2% clearance rate. Property crimes represent 95.9% of all reported index crimes and account for a crime rate of 25.86 offenses per 1,000.

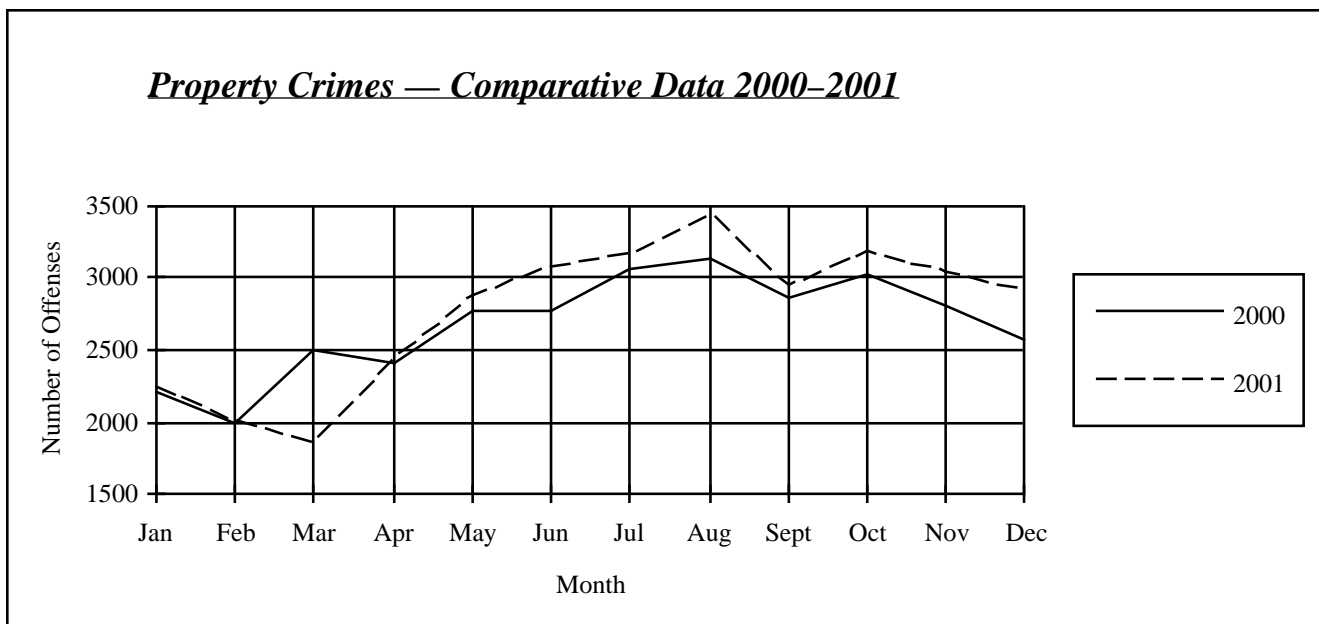
**Crime Clock**



***Number of Offenses — Comparative Data 2000–2001***

	Burglary	Larceny	Motor Vehicle Theft	Arson	Totals
<b>2000</b>	6,759	23,808	1,317	196	32,080
<b>2001</b>	6,878	24,515	1,667	212	33,272
<b>Number Change</b>	119	707	350	16	1,192
<b>Percent Change</b>	1.8%	3.0%	26.6%	8.2%	3.7%

***Property Crimes — Comparative Data 2000–2001***



**Property Crime by County**

(State Property Crime Rate: 25.86)

