

VIOLENT CRIMES

Crimes of violence involve the element of personal confrontation between the perpetrator and victim and entail the use or threat of violence. By their very nature, violent crimes — murder, rape, robbery and aggravated assault — are considered more serious than property crimes. The total number indicates only the number of incidents reported to police and does not reflect the number of criminals who committed them or the number of injuries inflicted.

During the year 2001, violent crimes showed an increase from the previous year. There were 1,423 reported offenses during 2001 — compared with 1,390 for 2000. This increase of 33 crimes reported represents an increase of 2.4%.

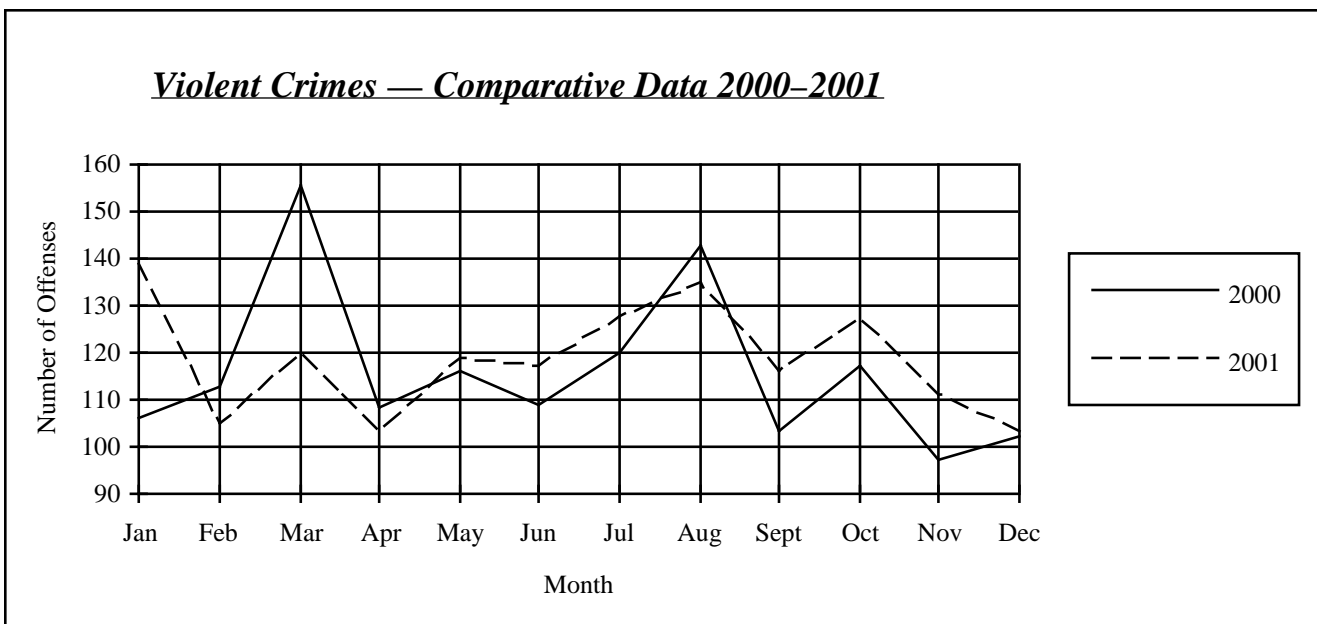
The 2001 crime rate for violent crime is 1.11 offenses per 1,000 population. Violent crimes represent 4.1% of all reported index crimes. Police cleared 931 violent crimes for a 65.4 clearance rate.



Number of Offenses — Comparative Data 2000–2001

	Murder	Rape	Robbery	Aggravated Assault	Totals
2000	14	318	246	812	1,390
2001	19	322	263	819	1,423
Number Change	5	4	17	7	33
Percent Change	35.7%	1.3%	6.9%	0.9%	2.4%

Violent Crimes — Comparative Data 2000–2001



Violent Crime by County

(State Violent Crime Rate: 1.11)

