

VIOLENT CRIMES

Crimes of violence involve the element of personal confrontation between the perpetrator and victim and entail the use or threat of violence. By their very nature, violent crimes — murder, rape, robbery and aggravated assault — are considered more serious than property crimes. The total number indicates only the number of incidents reported to police and does not reflect the number of criminals who committed them or the number of injuries inflicted.

During the year 2000, violent crimes showed an increase from the previous year. There were 1,390 reported offenses during 2000 — compared with 1,283 for 1999. This increase of 107 crimes reported represents an increase of 8.3%.

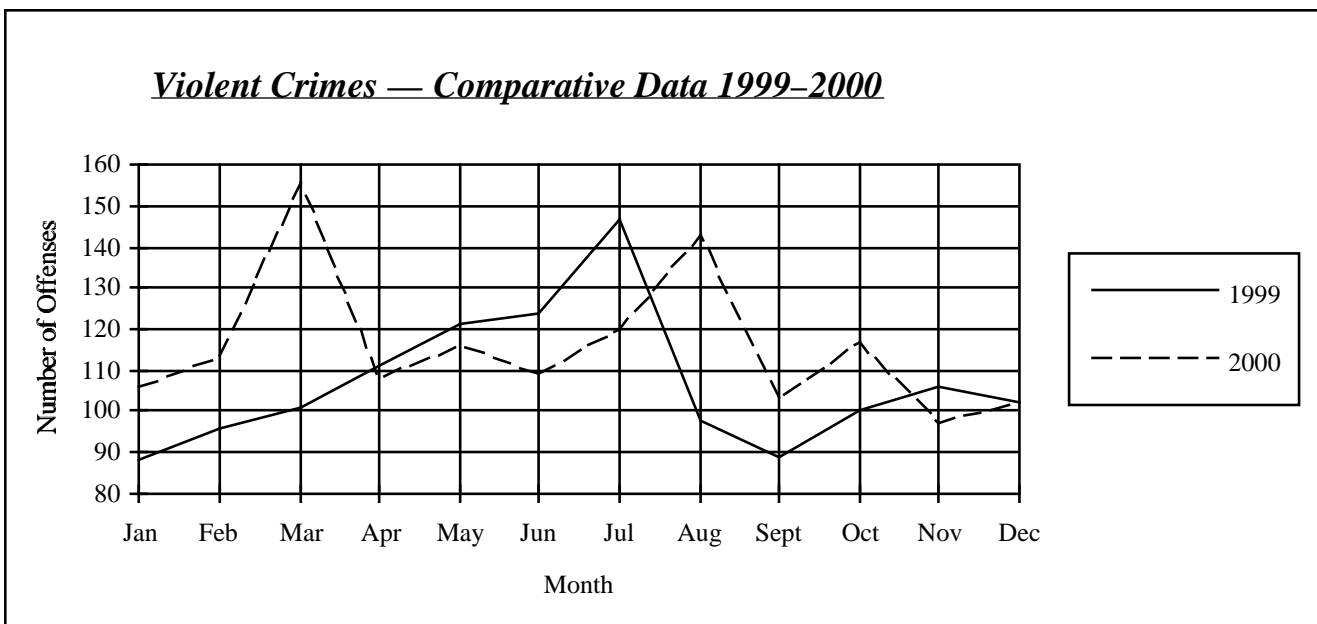
The 2000 crime rate for violent crime is 1.09 offenses per 1,000 population. Violent crimes represent 4.2% of all reported index crimes. Police cleared 872 violent crimes for a 62.7 clearance rate.



Number of Offenses — Comparative Data 1999–2000

	Murder	Rape	Robbery	Aggravated Assault	Totals
1999	25	273	196	789	1,283
2000	14	318	246	812	1,390
Number Change	-11	45	50	23	107
Percent Change	-44.0%	16.5%	25.5%	2.9%	8.3%

Violent Crimes — Comparative Data 1999–2000



Violent Crime by County

(State Violent Crime Rate: 1.09)

