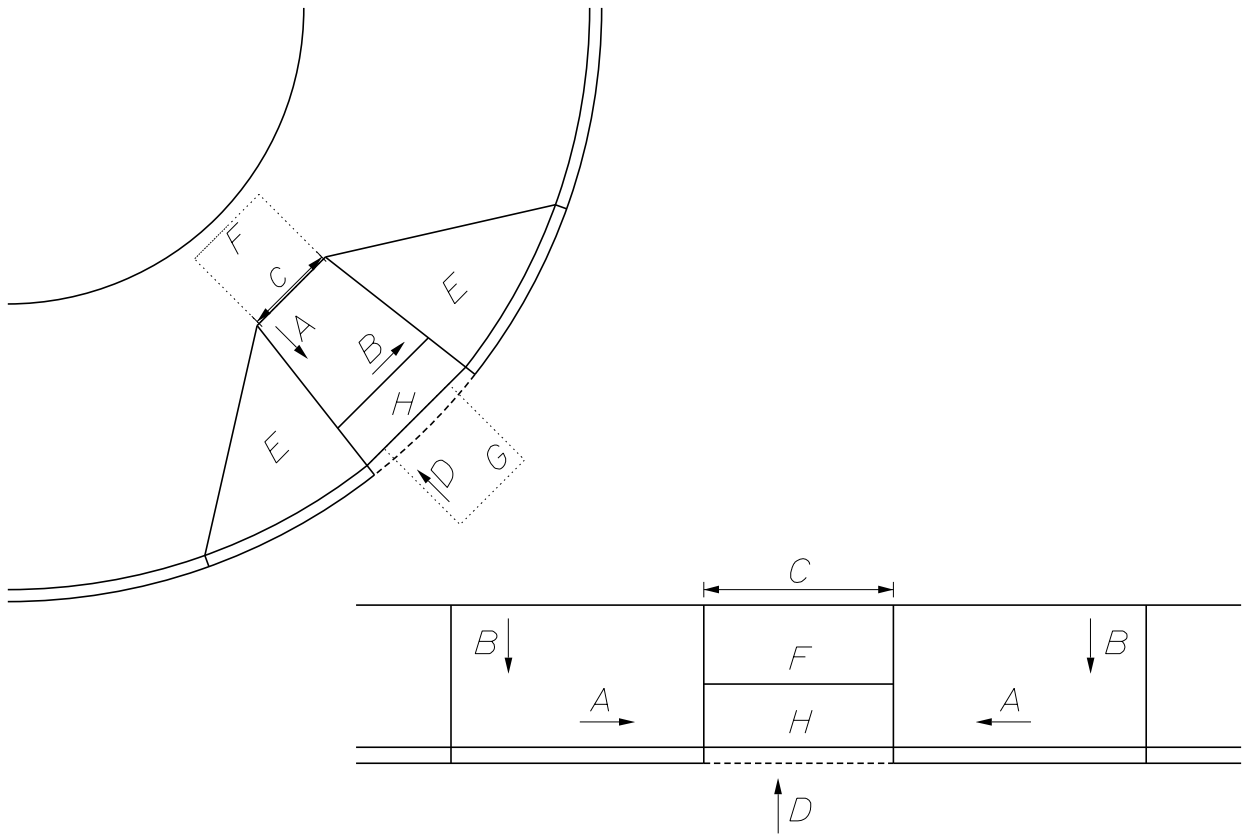





CURB RAMP REQUIREMENTS		
Running Slope	A	Max. 8.33% (1:12) <i>Applies up to a maximum ramp length of 15 feet.</i>
Cross Slope	B	1.5% (1:67) (standard) 2% (1:50) (maximum) <i>Ramp cross slope at street crossings without stop or signal control may match roadway profile.</i>
Clear Width	C	Min. 4' – 8" <i>Provide 5'-8" clear width when feasible. <u>Existing</u> ramp width may remain 4 feet.</i>
Counter Slope	D	Max. 5% (1:20) <i>Adjacent surface must be flush with the ramp.</i>
Flared Sides	E	Max. 10% (1:10)
Turning Space	F	4 feet by 4 feet <i>Maximum slope of 2% in any direction. May include Detectable Warnings.</i>
Clear Space	G	4 feet by 4 feet <i>Located at the bottom of perpendicular ramps outside active travel lanes.</i>
Detectable Warnings	H	<i>Required at traffic-controlled intersections and mid-block crossings. Extend the full width of curb opening except for a 4" maximum border.</i>



CURB RAMP REQUIREMENTS

Supersedes 801(12)

Supplemental
Standard Detail

 9-28-2023