

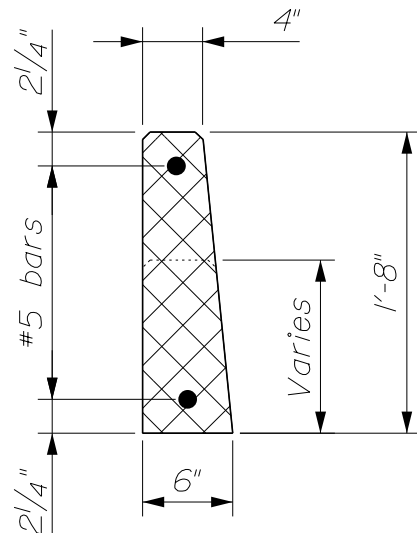
~ ELEVATION ~

△ 1 NOTES:

1. Precast Concrete Vertical Curb shall meet the requirements of Standard Specifications Section 609 - Curb.

△ 2. At the Contractor's option, the Contractor may perform the work to precast the Precast Concrete Transition Curb. Concrete shall meet the requirements of Class A or Class LP concrete per Method C, in accordance with Standard Specification Section 502, Structural Concrete. Reinforcing steel shall be in accordance with Standard Specification Section 503, Reinforcing Steel.

△ 3. Unless otherwise indicated, payment will be included under the applicable bridge transition or bridge approach rail item. No separate payment will be made.



~ SECTION ~

PRECAST CONCRETE VERTICAL CURB

Supersedes 609(09)

Supplemental
Standard Detail

△ 1 Dec. 29, 2020

△ 2 Feb. 03, 2025

△ 3 Mar. 27, 2025