
 **GOM***MAINE* 

What is GO MAINE?

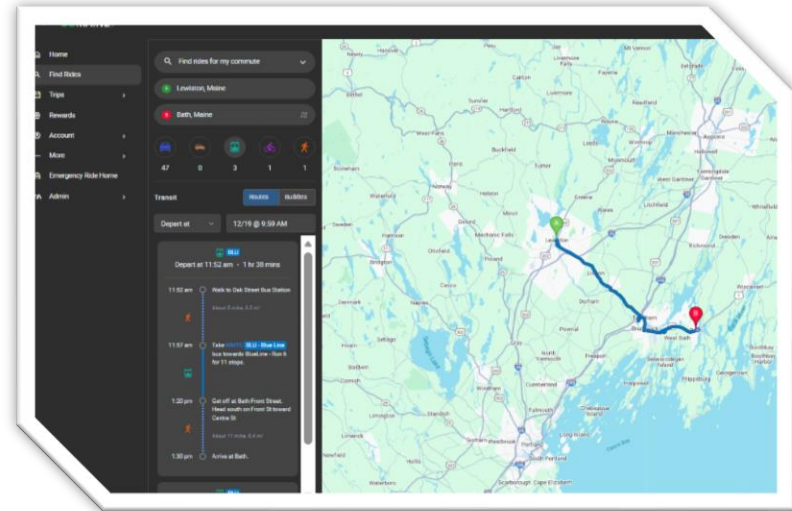


- Helps the public find travel options through the **trip planner** and online resources
- **Matches** carpoolers and assists with forming **vanpools**
- Provides **rewards** for sustainable trips (carpool, transit, walk, bike, telework)
- Offers the **Emergency Ride Home** reimbursement benefit
- Promotes and supports **public transit** options statewide
- Assists **employers and schools** in building commute-friendly programs
- Coordinates statewide **Way 2 GO MAINE** challenges and outreach
- Supports **volunteer driving networks** with trip-planning tools and awareness
- Provides **free resources and technical assistance** to individuals and organizations



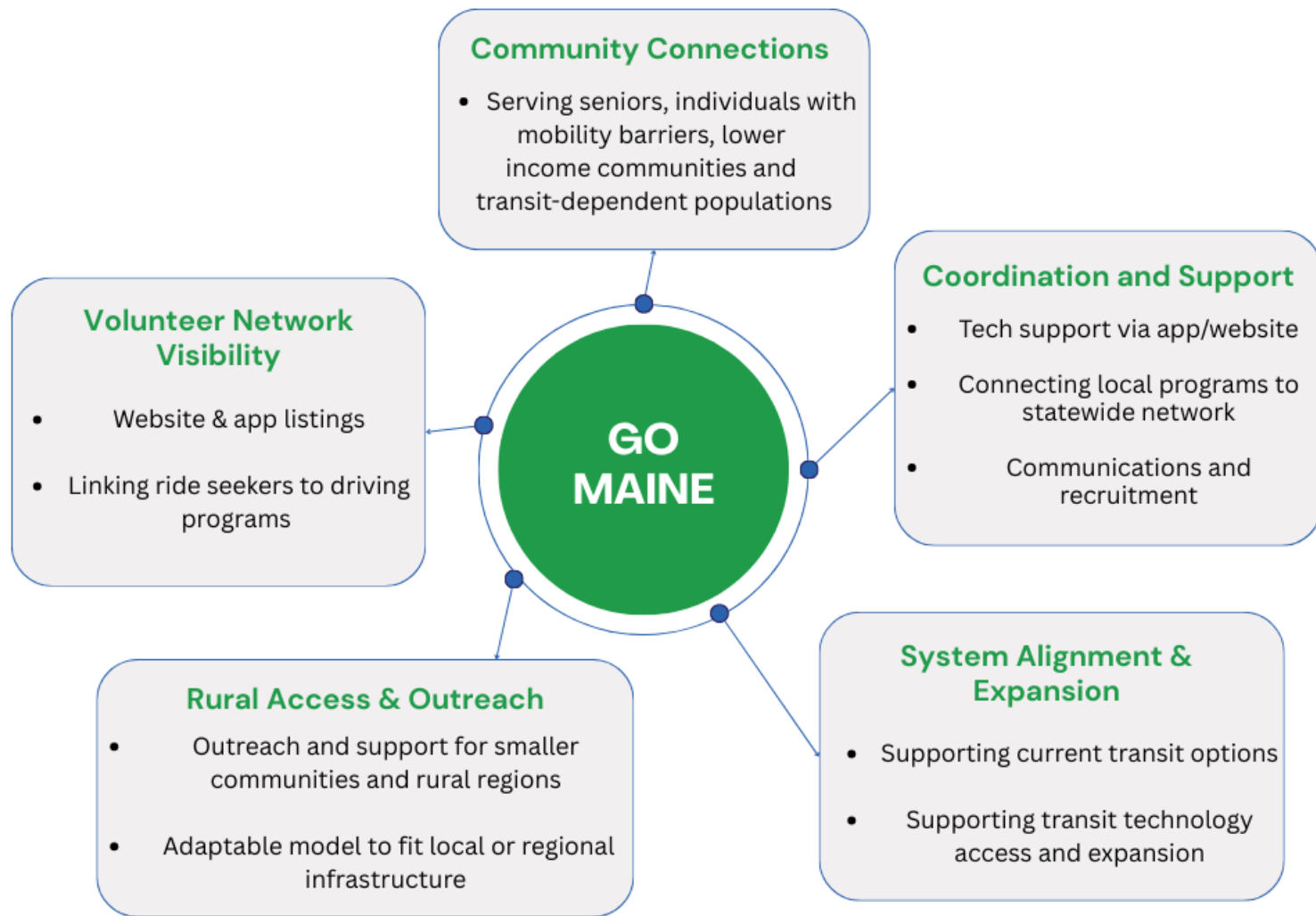
GO MAINE & Mobility Management

Connecting Transit Systems, Providers, and People Across Maine



- **Information Hub:** Central access to transit, volunteer driver, and on-demand options.
- **Coordination Support:** Connects and assists transit providers statewide.
- **Regional Alignment:** Mirrors MaineDOT transit regions and LD 1451 hub goals.
- **Public Assistance:** Helps residents find transportation, especially those in need.
- **Data & Insights:** Supplies trip data to inform planning and policy decisions.

GO MAINE's Support of Local Volunteer Driving Networks



What GO MAINE Does Not Do

- Does **not dispatch or operate rides** — no fleet, vehicles, or drivers
- Is **not a transportation provider** (no taxi, Uber, Lyft, or transit service)
- Cannot **guarantee service availability** — depends on what exists locally
- Does **not coordinate or manage** volunteer driver schedules
- Does **not fund** rides or offer direct fare subsidies
- Does **not replace** public transit agencies or human service transportation systems





Questions?