

# LPA MANUAL SECTION 4 ENVIRONMENTAL REVIEW

Danielle Tetreau,  
Environmental Team Lead

# ENVIRONMENTAL REVIEW - OVERVIEW

## 1. MaineDOT Environmental Office

- MaineDOT Environmental Office vs. Local Responsibility
- National Environmental Policy Act

## 2. Project Milestones and ENV Documentation

Kickoff, PDR, Permits/PSE

NEPA, NEPA Checklist

Permits, ENV Documents

PS&E Contracts,

## 3. Questions and Contact Information

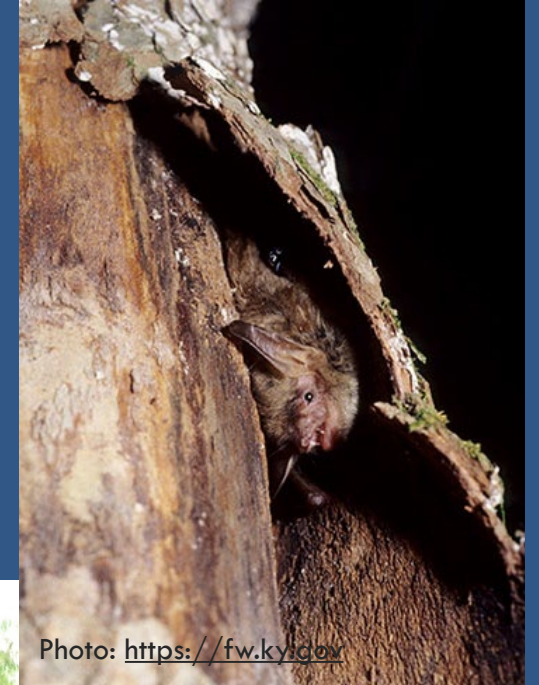


Photo: <https://fw.ky.gov>



# 1. MAINEDOT ENVIRONMENTAL OFFICE

## MaineDOT vs. Local Responsibility

This table is in the LPA handbook, Chapter 4, page 4-3

TASK	RESPONSIBILITY
National Environmental Policy Act (NEPA)	Federal funds: MaineDOT State funds only: Local Agency through federal permit
Section 106 of the Historic Preservation Act	Federal funds: MaineDOT State funds only: Local Agency through federal permit
Section 4(f) of the Department of Transportation Act	Federal funds: MaineDOT No U.S. DOT funds: 4(f) does not apply
Endangered Species Act (Section 7) and Essential Fish Habitat	Federal funds: MaineDOT State funds only: Local Agency through federal permit
Hazardous Materials	MaineDOT with assistance from Local Agency
Wetland and Stream Surveys, Environmental Permits, Dredged Material Evaluation and Approvals, Mitigation, All Stormwater Permits (Chapter 500, MPDES, Erosion & Sedimentation Control Law)	Local Agency
MaineDOT Environmental Office contact: Danielle Tetreau, Environmental Team Leader	207-592-2358 ( <a href="mailto:Danielle.Tetreau@maine.gov">Danielle.Tetreau@maine.gov</a> )

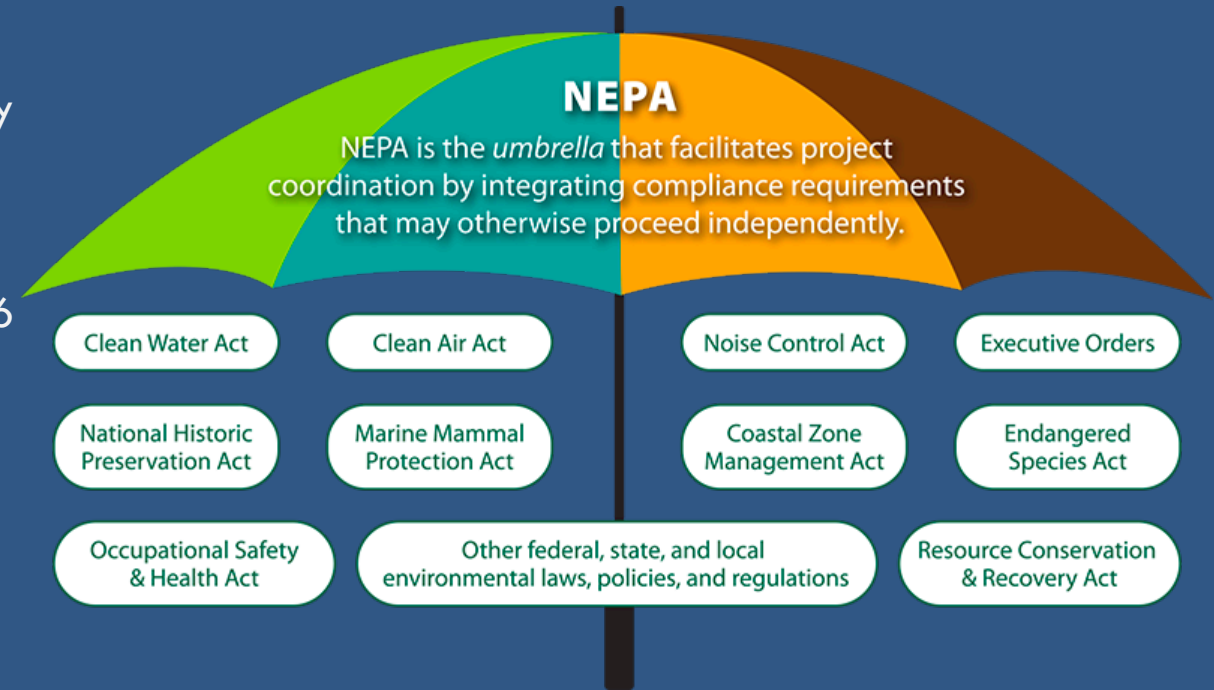
# 1. NATIONAL ENVIRONMENTAL POLICY ACT (NEPA)

## ▪ Required for any Federal “Action”

- Involves documenting compliance and consultation with a variety of federal laws and Executive Orders
- For FHWA-Funded projects, NEPA must be approved before negotiating ROW.
- MaineDOT has NEPA Assignment from FHWA under Section 326 for approving CE as the Action Agency. No change to responsibility or process for Local Agency.
  - Anticipate Section 327 Assignment in 2026 (EA & EIS)

## ▪ Categorical Exclusion (most common)

- If your project is not complete 3 years after NEPA approval, MaineDOT will re-evaluate.
- More coordination may be required for projects with identified environmental impacts.
- Refer to the NEPA CHECKLIST.



# 2. PROJECT MILESTONES

## Project Kick off

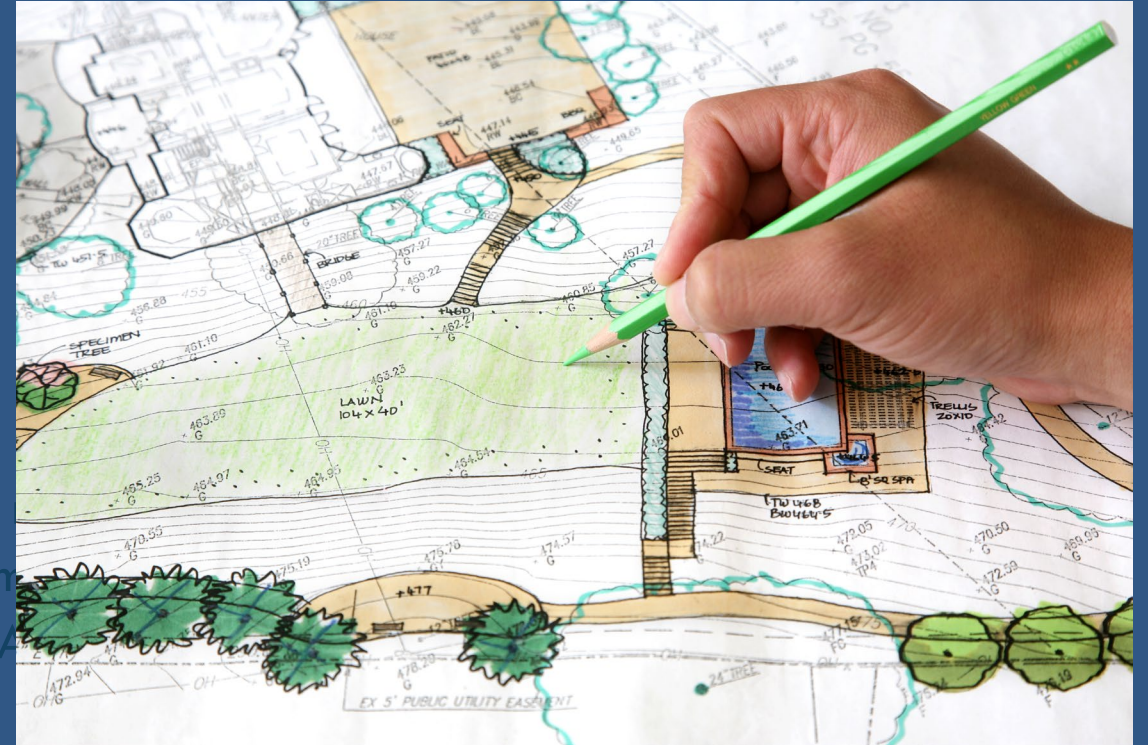
- Meeting or notification
- Provide scope of work and extents/locations
- Review NEPA Checklist

## PDR

- Letter 10/Public Notification Documentation
- Submit Letter 11/NEPA Checklist
- May require additional coordination if ROW impacts are
- MaineDOT will approve NEPA after all coordination is complete
- No negotiations with landowners are allowed before NEPA

## Permits/PS&E

- Letter 12 – certifies no permits needed, or provide copies of approvals. Local Agency makes this determination.
- MaineDOT provides Environmental Summary Sheet for Contract Package, may include General Note or other Specification documents related to Environmental Commitments.



# 2. PROJECT MILESTONES - NEPA CHECKLIST

Updated in 2025.  
Please use newest version.

<https://www.maine.gov/mdot/lpa/>

**1.) Public Involvement:** Is there substantial public opposition to proposed action? Yes  No   
*The answer should become apparent at a public meeting.*

**Documentation:** Approved capital plan; meeting records; letters from the public; board meeting minutes; or Communication 10 (Public Process).

**2.) Right-of-Way:** Does action include a residential or commercial displacement or acquisition of property rights that will result in substantial abutter impacts? Yes  No   
*For help with "substantial," contact your Project Manager at MaineDOT.*

**Documentation:** Design Plan Impacts Complete for the project

**3.) Endangered Species & Essential Fish Habitat:**

- a. Has a qualified person surveyed the project area for streams, rivers, tidal waters, wetlands, or vernal pools? Provide details on any identified resources below. Yes  No
- b. Is any work proposed in or adjacent to a stream, river or coastal waters? Yes  No
- c. Does the project require clearing trees or trimming limbs 3" or greater in diameter? Yes  No
- d. Does the project require night work or percussive noise (e.g. pile driving)? *See below* Yes  No
- e. Can clearing or limbing be completed between November and April? *See below* Yes  No

Additional Details: \_\_\_\_\_

**Documentation:** Resource delineation and plans with location of resource and work planned. The project will be screened by the MaineDOT Environmental Office for intersection with habitat for Endangered Species and fish habitat. If in-water work is proposed, additional coordination with the Environmental Office will be required for compliance with the Maine Atlantic Salmon Programmatic Agreement or other bat species considerations.

**4.) Section 4(f) or 6(f):**

- a. Does project area include or abut resources protected by Section 4(f) of the Department of Transportation Act: publicly owned land, parks, recreation areas, wildlife and waterfowl refuges, or historic sites? Yes  No
- b. Will project require temporary or permanent rights on any protected 4(f) resource listed above? Yes  No

# 2. PROJECT MILESTONES

## Project Kick off

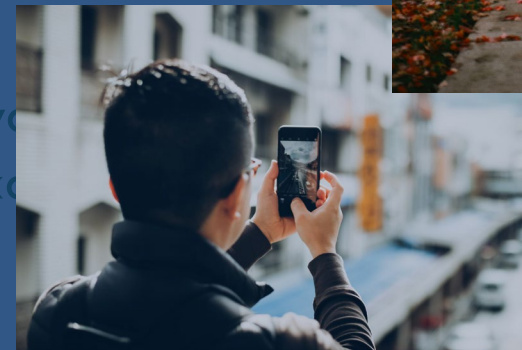
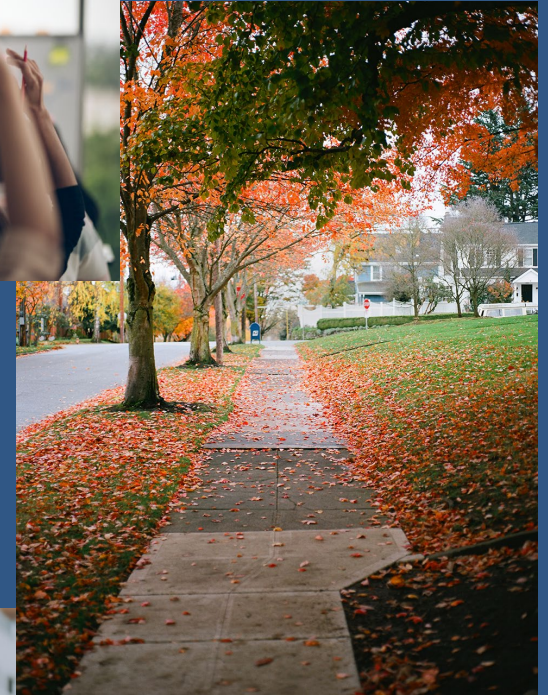
- Meeting or notification
- Provide scope of work and extents/locations
- Review NEPA Checklist

## PDR

- Letter 10/Public Notification Documentation
- Submit Letter 11/NEPA Checklist
- May require additional coordination if ROW impacts are needed.
- MaineDOT will approve NEPA after all coordination is complete.
- No negotiations with landowners are allowed before NEPA approval.

## Permits/PS&E

- Letter 12 – certifies no permits needed, or provide copies of approved permits
- MaineDOT provides Environmental Summary Sheet for Contract Package and PS&E  
Specification documents related to Environmental Commitments.



this determination.

l Note or other

## 2. PROJECT MILESTONES - NEPA

Sections of NEPA which often cause delays or require additional coordination with MaineDOT

- Section 106 of the National Historic Preservation Act
  - Additional survey or review, coordination with state and local historic groups; mitigation or documentation
- Section 4(f) of the USDOT Act, and 6(f) LAWCON
  - Details on ROW impacts, temporary vs. permanent
  - Publicly-owned parks, refuges, recreational areas
  - Coordination with LAWCON Stewardship Managers
- Section 7 of the Endangered Species Act
  - Details on scope, in water work, noise, clearing, lighting.
- Contaminated Materials and Substances
  - Subsurface borings, coordination with MDEP



# 2. PROJECT MILESTONES

## Project Kick off

- Meeting or notification
- Provide scope of work and extents/locations
- Review NEPA Checklist

## PDR

- Letter 10/Public Notification Documentation
- Submit Letter 11/NEPA Checklist
- May require additional coordination if ROW impacts
- MaineDOT will approve NEPA after all coordination is
- No negotiations with landowners are allowed before

## Permits/PS&E

- Letter 12 – certifies no permits needed, or provide copies of approvals. Local Agency makes this determination.
- MaineDOT provides Environmental Summary Sheet for Contract Package, may include General Note or other Specification documents related to Environmental Commitments.

**SEND ANY OF THESE LETTERS AT ANY POINT, AS SOON AS YOU CAN**



# 2. PROJECT MILESTONES - PERMITS

These permits must be included with the Letter 12 submittal.

## Environmental Permitting

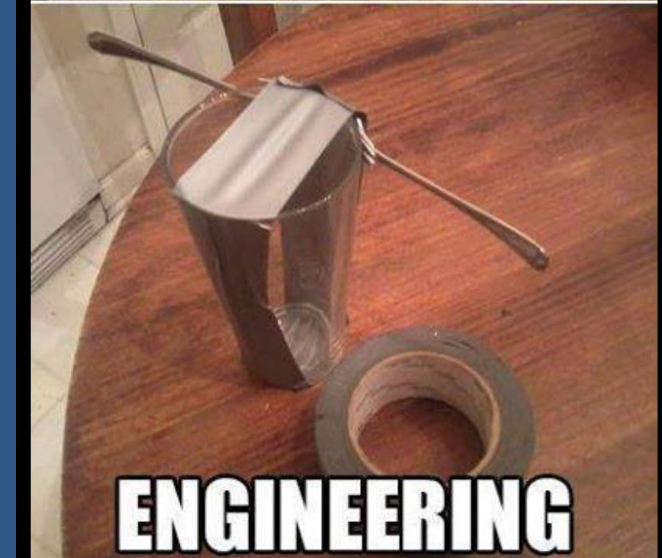
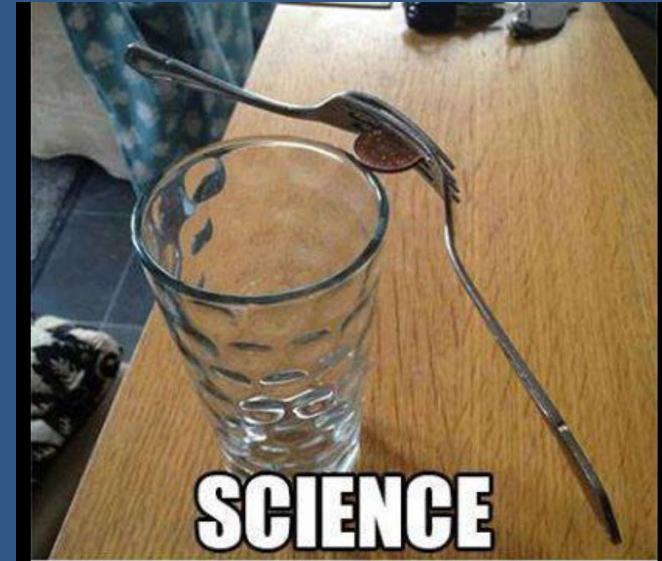
- State and federal wetland, stormwater permits, construction general permit, etc.) is the responsibility of the Local Agency
- See [www.mainewetlands.org](http://www.mainewetlands.org) for a list of wetland delineators and contact information

## Maine Natural Resources Protection Act (NRPA)

- Required if impacting wetlands or adjacent to certain resources
- Local Agency cannot use PBR 11 for Transportation
- Call MDEP for guidance or assistance: <https://www.maine.gov/dep/land/contacts/>

## Clean Water Act (USACE)

- All wetland or stream impacts are regulated activities
- PCN Application may be required for all permanent wetland and stream impacts over 0.10 acre.
- Threshold for requiring compensation is 5,000 SF permanent impact.
- Call the Maine Projects Office of the Corps for guidance: 207-623-8367



# 2. PROJECT MILESTONES – PS&E CONTRACTS

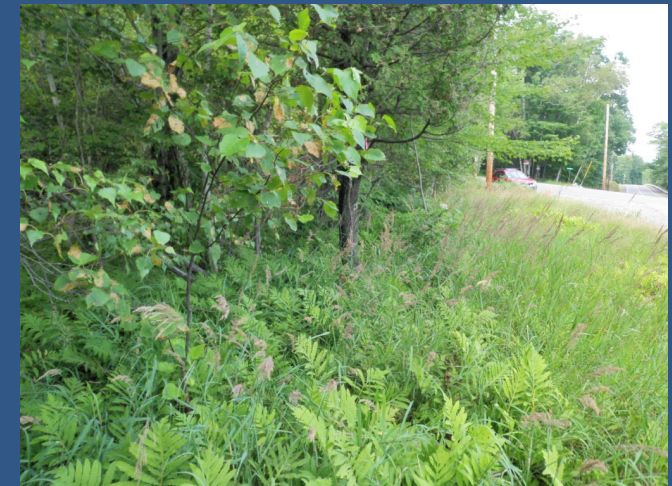


## Letter 12 – Environmental Certification

- Include copies of all approved environmental permits.
- MaineDOT provides summary sheet with any related contract specification documents.

## After Advertise

- Contractor provides Soil Erosion and Water Pollution Control Plan (SEWPCP) to the Resident.
- Town is responsible for environmental compliance and/or oversight.





# 3. QUESTIONS?



MAINEDOT  
ENVIRONMENTAL OFFICE

Danielle Tetreau, Environmental Team Leader  
Phone: 207-592-2358  
Email: [danielle.tetreau@maine.gov](mailto:danielle.tetreau@maine.gov)