

# STATE OF MAINE STATE HIGHWAY COMMISSION

## PLANS

# WATERVILLE KENNEBEC COUNTY MAINE FEDERAL AID INTERSTATE PROJECT NO. 1-95-6(10)118

TOTAL LENGTH 2.497 MILES

SCALES  
 PLAN 1 IN. = 100 FT.  
 PROFILE { HOR. 1 IN. = 100 FT.  
 VER. 1 IN. = 10 FT.  
 CROSS SECTIONS 1 IN. = 10 FT.

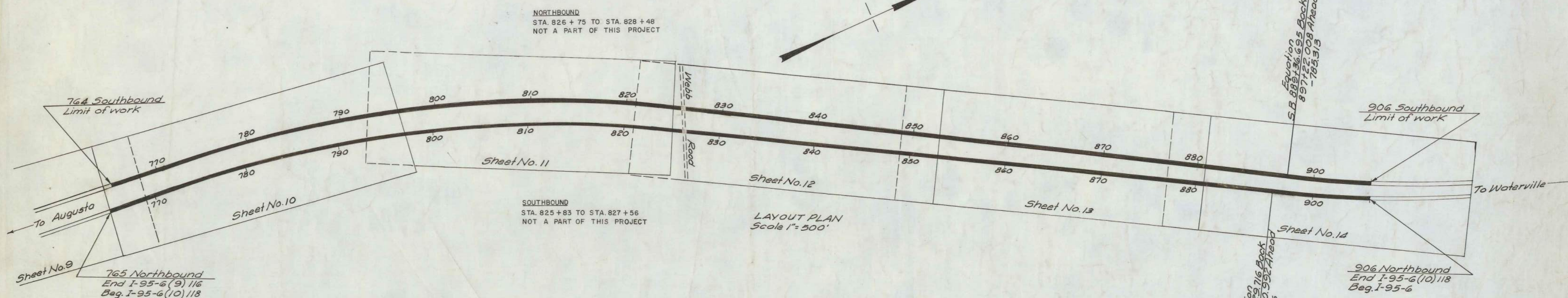
### CONVENTIONAL SIGNS

STATE OR NATIONAL LINE	---	SURVEY LINE	---
COUNTY LINE	---	CULVERT	---
TOWN LINE	---	DROP INLET	---
UNFENCED PROPERTY	---	TROLLEY POLE	---
FENCE	---	POWER POLE	---
RIGHT OF WAY LINE	---	TEL. POLE	---
TRAVELED WAY	---	MARSH	---
RAILROAD	---	TREES	---
RETAINING WALL	---	STONE WALL	---

### INDEX OF SHEETS

SHEET NO.	TITLE PAGE	STA.
1	TITLE PAGE	STA. 765+00 - 906+00
2	TYPICAL SECTIONS	
3	QUANTITIES	
4, 5, 6 & 7	STANDARD DETAILS	
9-14 (INCL.)	PLAN AND PROFILE	STA. 765+00 - 906+00
15-75	CROSS-SECTIONS	STA. 765+00 - 906+00
	BRIDGES	STA.
8	SPECIAL DETAILS	

Sheet #9 Missing 2-23-73



ADT (1960) 7238  
 ADT (1980) 10,857  
 DHV 1628  
 D 65 %  
 T 15 %  
 V 60

### NOTE:

All work contemplated under this contract to be governed by and in conformity with the specifications adopted Jan. 1956 except as modified on these plans and in the special provisions.

APPROVED:  
MAINE STATE HIGHWAY COMMISSION

*David H. Stevens*  
*Robert H. Williams*  
*Carroll J. Stevens*

DEPARTMENT OF COMMERCE  
BUREAU OF PUBLIC ROADS  
REGION 1

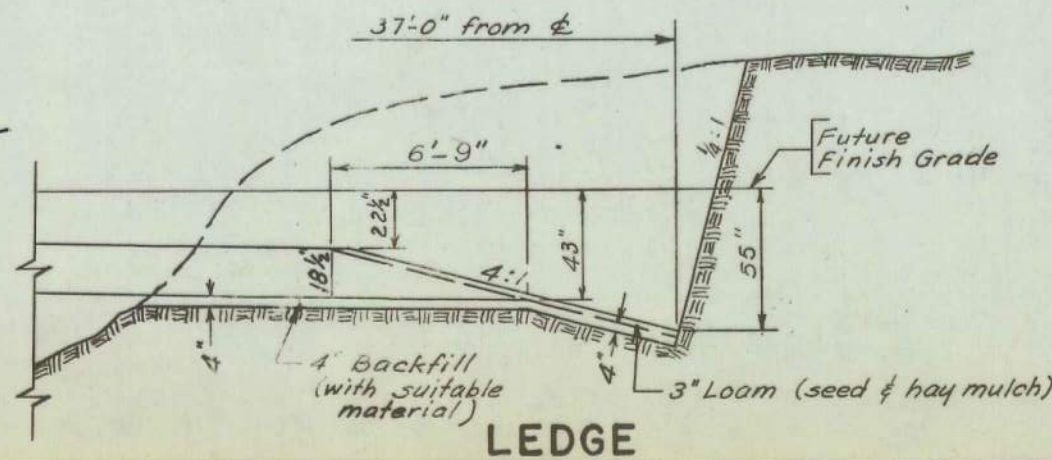
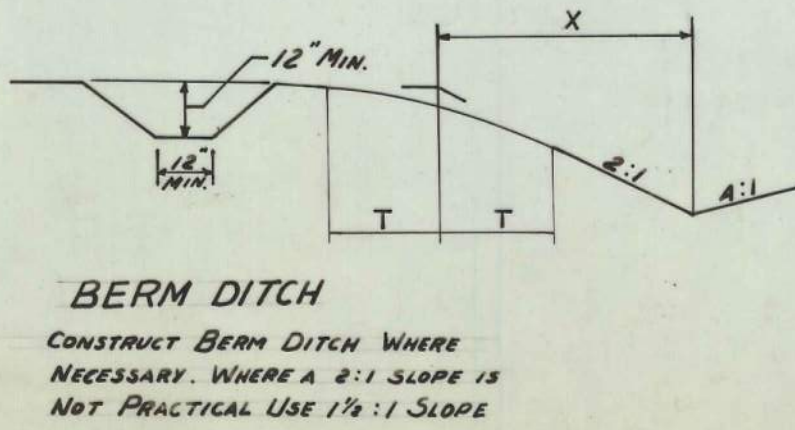
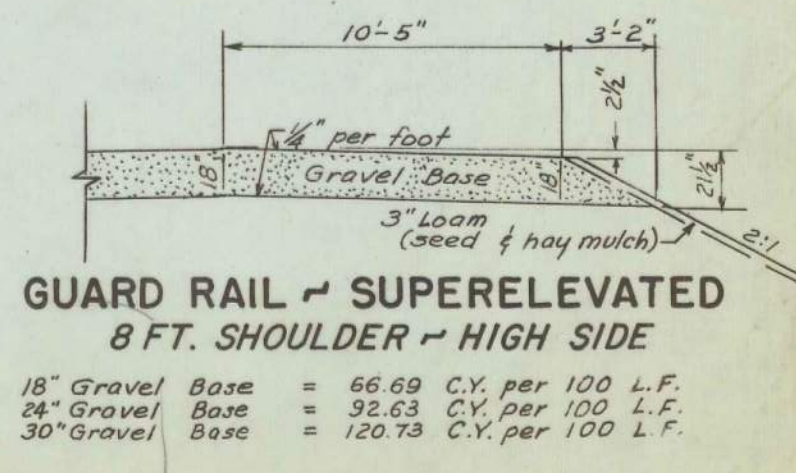
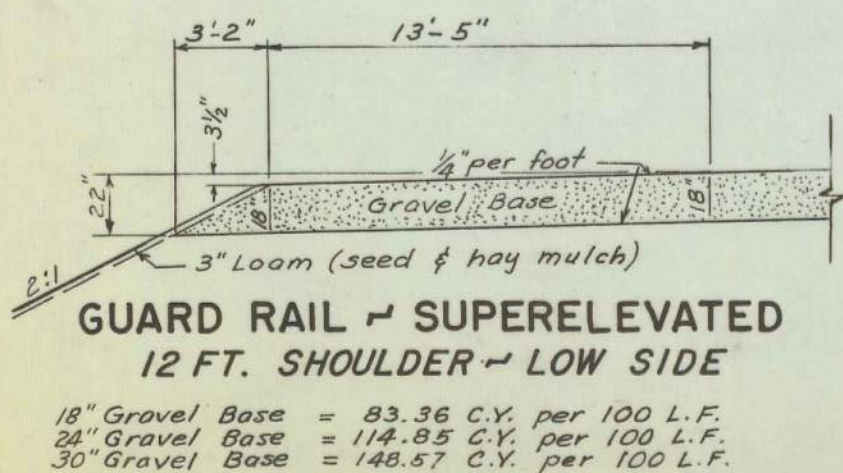
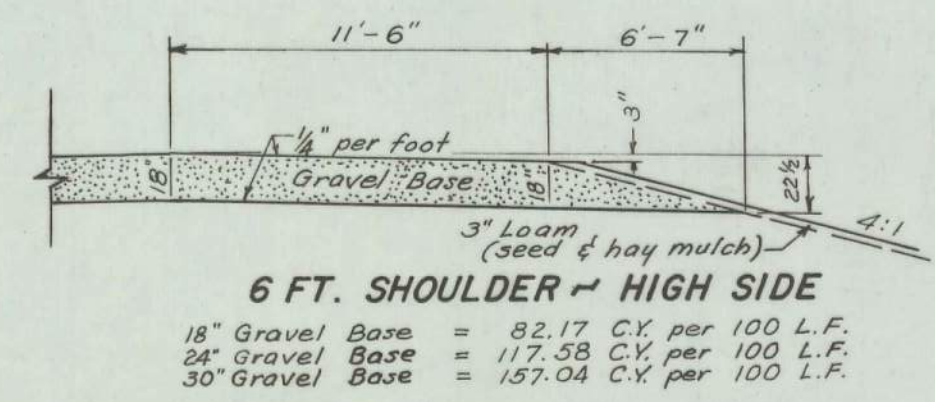
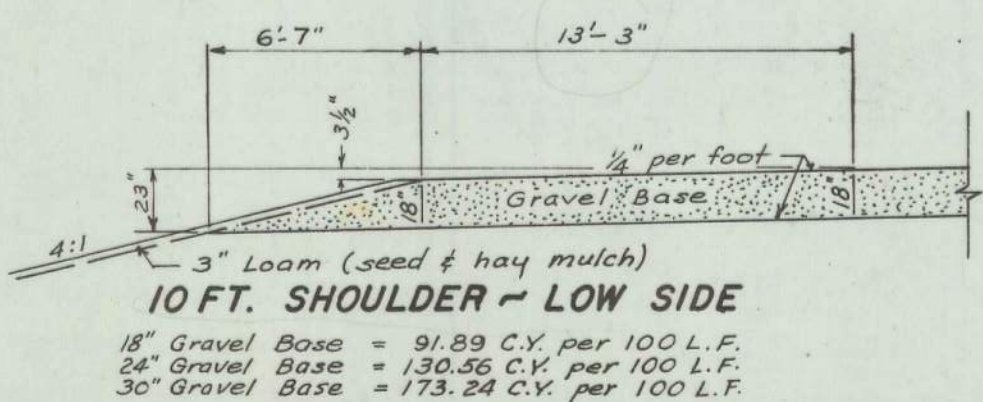
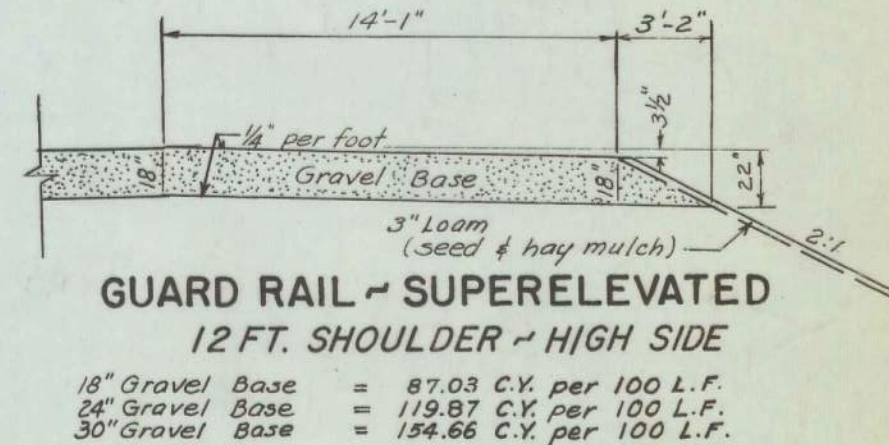
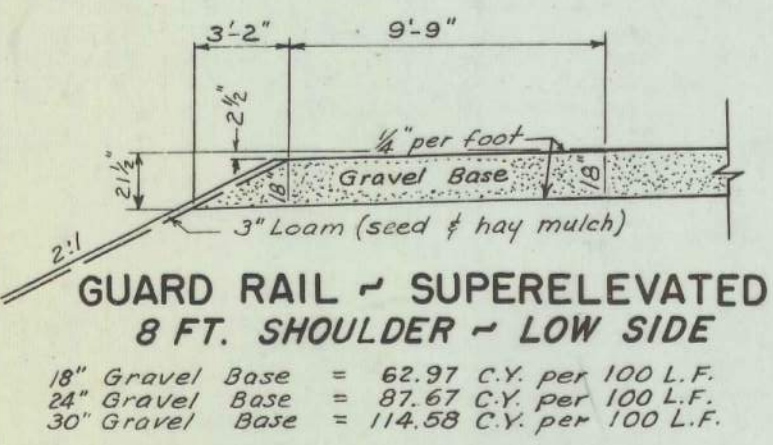
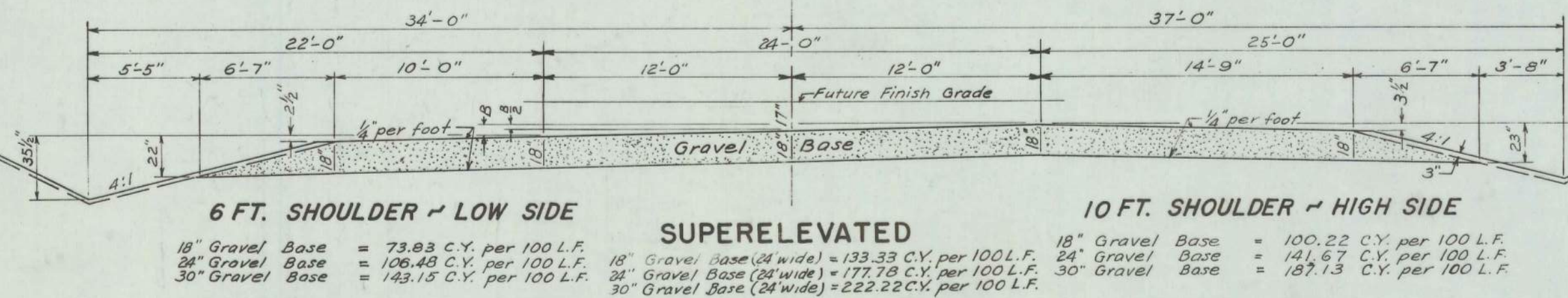
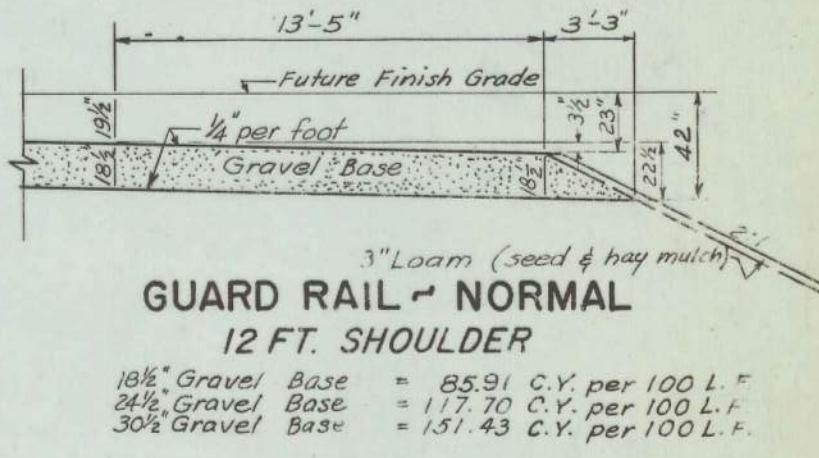
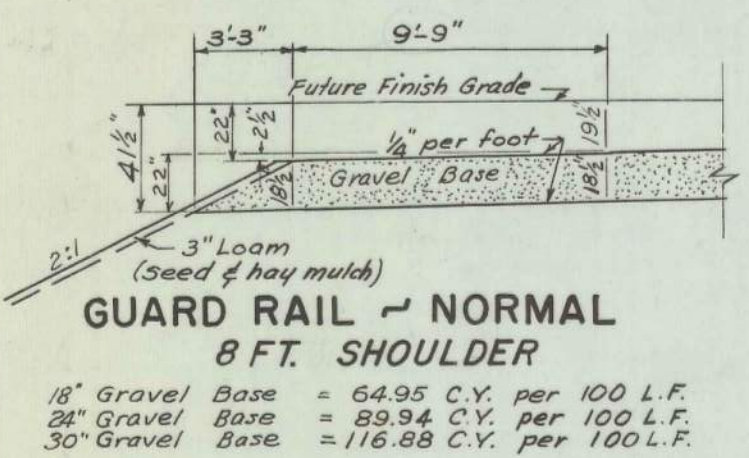
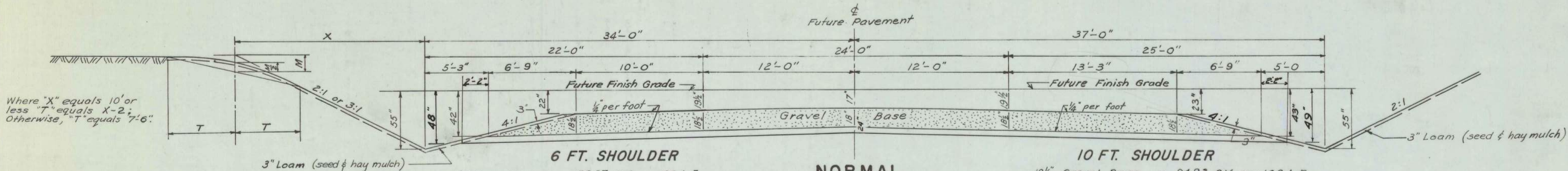
APPROVED:

DIVISION ENGINEER DATE



STAGE CONSTRUCTION = GRADING AND GRAVEL BASE

B. P. R. REGION NO.	STATE	FEDERAL AID PROJECT NO.	SHEET NO.	TOTAL SHEETS
1	MAINE	I-95-6(10)	2	75





DRAINAGE

STATION	A.C.C.M.P.		R.C.P.		A.C.C.M.P.		A.C.C.M.P.		C.M.P.		CATCH BASINS				DROP INLETS		MAN - HOLES		UNDERDRAINS				REMARKS	
	LEFT EXTENSION				RIGHT EXTENSION														TYPE		TYPE C			
	SIZE	LENGTH	SIZE	LENGTH	SIZE	LENGTH	SIZE	LENGTH	SIZE	LENGTH	A	B	C	D	E	A	B	A	B	A	B	SIZE		LENGTH
NORTHBOUND																								
767+65	24	12	24	64	24	12																		1 PIPE CONNECTOR & 1 METAL END WALL
771+25	24	8	24	56	24	10																		" " " " " " " " " " " "
779+50	24	10	24	60	24	12																		" " " " " " " " " " " "
787+90	60	19	60	56	60	13																		" " " " " " " " " " " "
793+0	24	12	24	60	24	16																		" " " " " " " " " " " "
795+68	36	20	36	60	36	30																		" " " " " " " " " " " "
804+20	24	14	24	64	24	22																		" " " " " " " " " " " "
808+80	30	14	30	60	30	14																		" " " " " " " " " " " "
811+50	24	26	24	64	24	14																		" " " " " " " " " " " "
820+0	18	14	18	64	18	18																		" " " " " " " " " " " "
822+50	18	14	18	64	18	26																		" " " " " " " " " " " "
829+50	60	18	60	96	60	18																		" " " " " " " " " " " "
834+50	24	12	24	62	24	16																		" " " " " " " " " " " "
842+50	24	14	24	52	24	14																		" " " " " " " " " " " "
850+0	24	10	24	52	24	10																		" " " " " " " " " " " "
854+0	24	12	24	48	24	16																		" " " " " " " " " " " "
859+68	30	10	30	52	30	14																		" " " " " " " " " " " "
866+70	24	10	24	56	24	16																		" " " " " " " " " " " "
879+0	24	14	24	60	24	24																		" " " " " " " " " " " "
886+60	24	14	24	52	24	20																		" " " " " " " " " " " "
897+0	24	18	24	60	24	24																		" " " " " " " " " " " "
SOUTHBOUND																								
767+12	24	10	24	56	24	14																		1 PIPE CONNECTOR & 1 METAL END WALL
770+18	24	10	24	54	24	12																		" " " " " " " " " " " "
777+50	24	16	24	64	24	18																		" " " " " " " " " " " "
787+25	60	27	60	64	60	25																		" " " " " " " " " " " "
792+20	24	24	24	64	24	24																		" " " " " " " " " " " "
796+60	24	26	24	56	24	12																		" " " " " " " " " " " "
798+60	30	26	30	68	30	32																		" " " " " " " " " " " "
805+90	24	16	24	56	24	32																		" " " " " " " " " " " "
810+0	30	18	30	56	30	18																		" " " " " " " " " " " "
814+50	24	22	24	60	24	20																		" " " " " " " " " " " "
820+75	18	14	18	64	18	26																		" " " " " " " " " " " "
823+0	18	18	18	68	18	22																		" " " " " " " " " " " "
831+20	60	18	60	124	60	20																		" " " " " " " " " " " "
848+0	24	14	24	48	24	20																		" " " " " " " " " " " "
854+0	24	16	24	48	24	20																		" " " " " " " " " " " "
859+82	30	18	30	56	30	18																		" " " " " " " " " " " "
866+50	24	10	24	52	24	24																		" " " " " " " " " " " "
875+50	24	14	24	56	24	20																		" " " " " " " " " " " "
878+82	24	16	24	56	24	16																		" " " " " " " " " " " "
886+93	24	12	24	52	24	16																		" " " " " " " " " " " "
899+0	24	12	24	52	24	18																		" " " " " " " " " " " "
842+49	24	14	24	52	24	16																		" " " " " " " " " " " "
NOTE: All 60" R.C.P. IS TO BE EXTRA STRENGTH.																								
Underdrain - Type "B"																								
N'BOUND																								
859+81 - 866+61 LT.																								
866+81 - 878+01 LT.																								
S'BOUND																								
880+70 - 885+90 LT.																								
886+04 - 899+0 LT.																								
899+11 - 906+0 LT.																								
UNDERDRAIN OUTLET																								
859+71 - 859+81 N.B. LT.																								
866+71 - 866+81 N.B. LT.																								
880+0 - 880+70 S.B. LT.																								
885+94 - 886+04 S.B. LT.																								
899+01 - 899+11 S.B. LT.																								

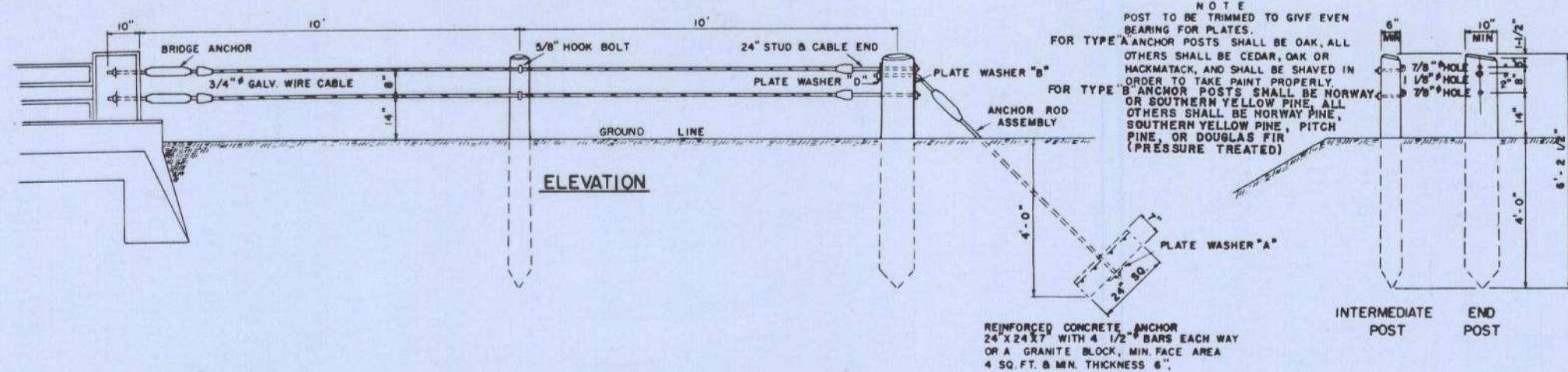
ESTIMATED QUANTITIES

ITEM NO.	DESCRIPTION	QUANTITY	UNIT
201-5	Clearing	59.198	Acres
202-5	Removing Trees (9" - 24")	21.5	Each
202-6	" (over 24")	3	"
203-9	Earth Excavation		Cu. Yds.
203-10	Rock		" "
204-10	Structural Earth Excavation - Drainage	4.2	" "
205-8	Common Borrow		" "
205-9	Granular		" "
	Gravel For Foundations	429	" "
302-7	Gravel Base Course - In Place Meas.	87,978	" "
308-5	Overhaul - In Place Meas.	386,147	Yd. Mi.
309-5	Stripping Pits	8,310	Cu. Yds.
311-6	Calcium Chloride	19.3	Tons
602-12	18 in. Asphalt Coated Corr. Metal Pipe	160	Lin. Ft.
602-14	24 in. " " " " " "	984	" "
602-15	30 in. " " " " " "	195	" "
602-16	36 in. " " " " " "	53	" "
602-20	60 in. " " " " " "	182	" "
603-12	18 in. Reinforced Concrete Pipe	292	" "
603-13	24 in. " " " " " "	1,872	" "
603-14	30 in. " " " " " "	332	" "
603-15	36 in. " " " " " "	68	" "
603-28	60 in. Extra Str. Reinforced Concrete Pipe	372	" "
606-10	Underdrain, Type "B"	3500	" "
606-16	Outlets	110	" "
906-18	Fencing - Metal Posts (Galvanized)	23,677	" "
907-10	Hand Laid Rip Rap	230	Cu. Yds.
908-8	Loom Excavation	5765	" "
908-9	Loom Borrow		" "
909-7	Sodding	11,111	Sq. Yds.
910-9	Seeding - Roadside Mixture	1,563	Units
912-6	Hay Mulch	102.15	Tons
915-6	Right of Way Monuments	25	Each
916-6	Underdrain Outlet Markers	1	"
926-7	Removing or Razing Buildings No. 1	1	"
607-7	Metal End Wall For 18" A.C.C.M.P.	4	"
607-8	" " " " 24" " "	28	"
607-9	" " " " 30" " "	5	"
607-10	" " " " 36" " "	1	"

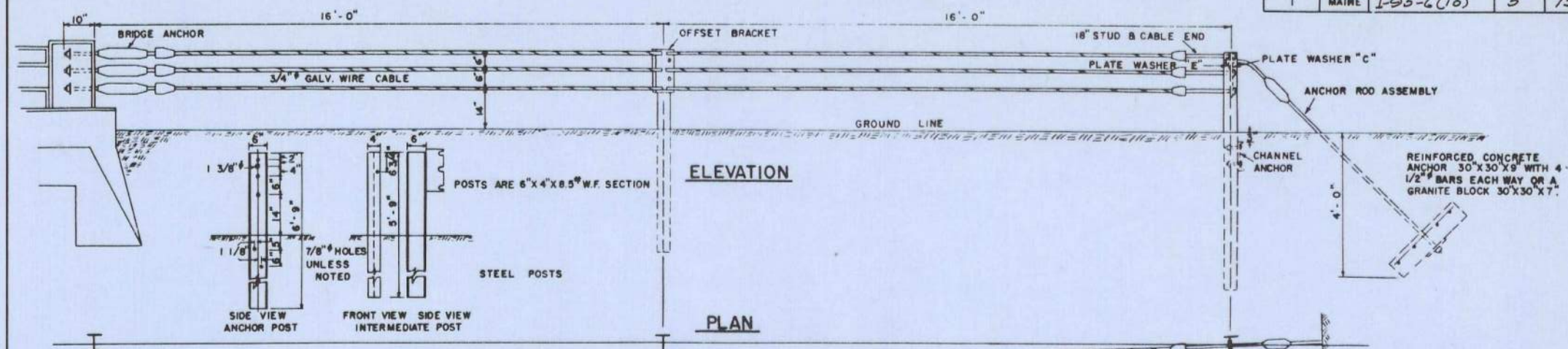




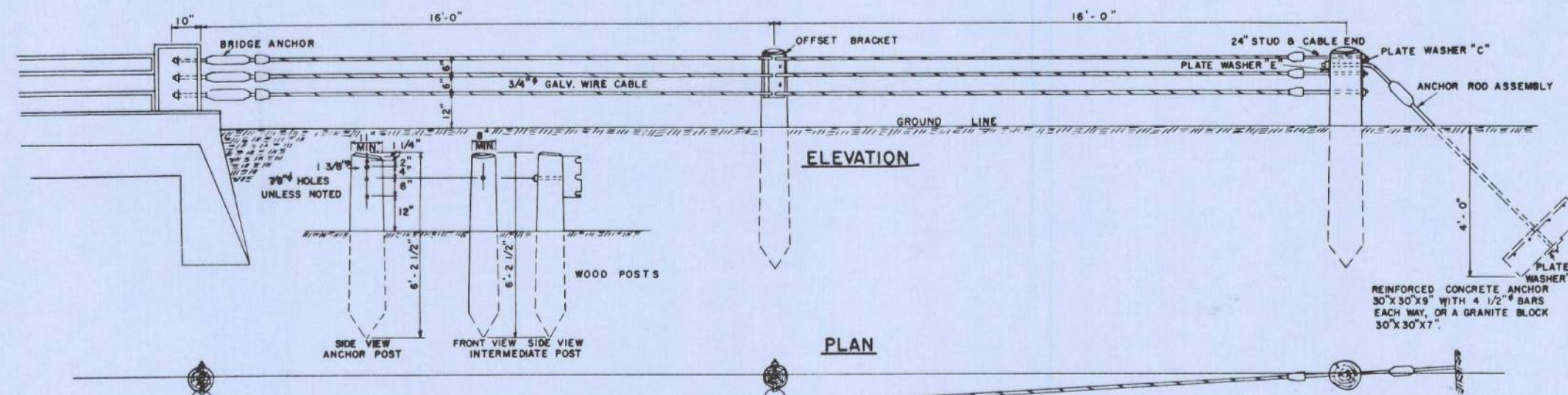




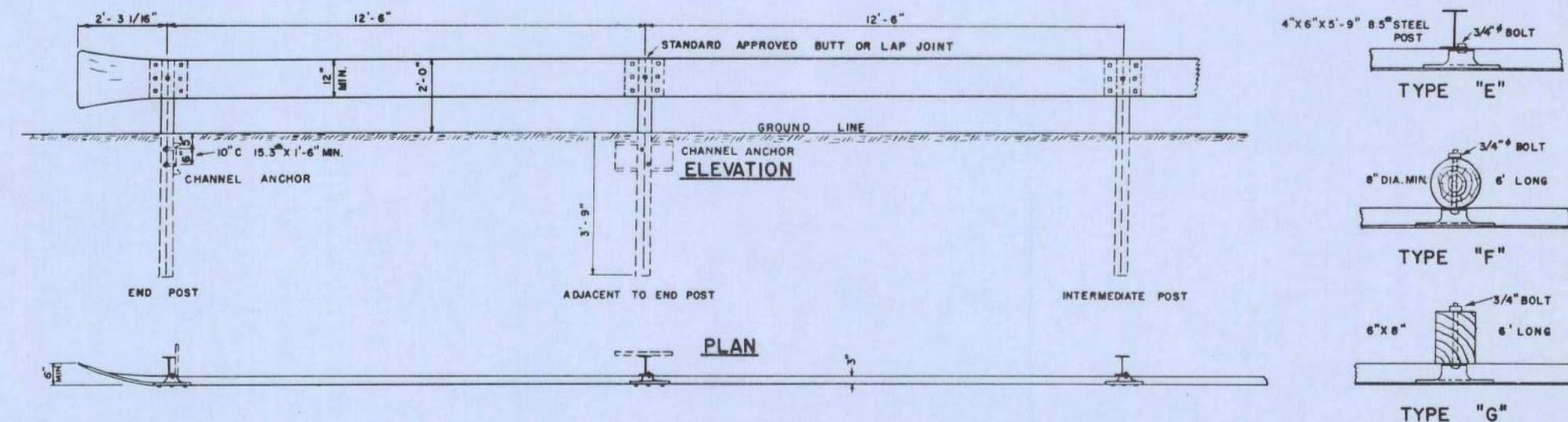
GUARD RAIL TYPE "A" & "B"



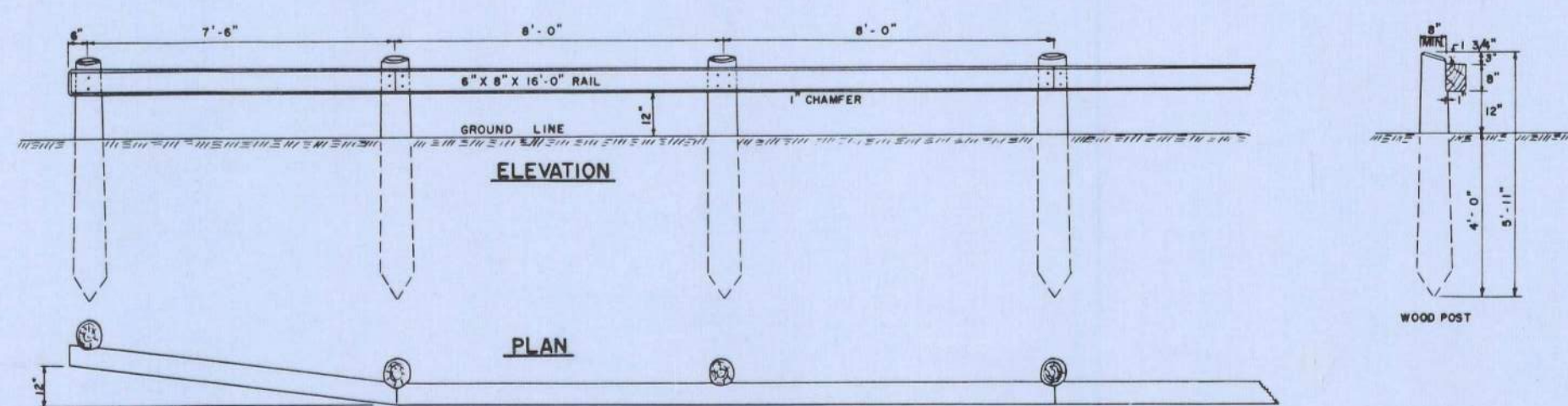
GUARD RAIL TYPE "C"



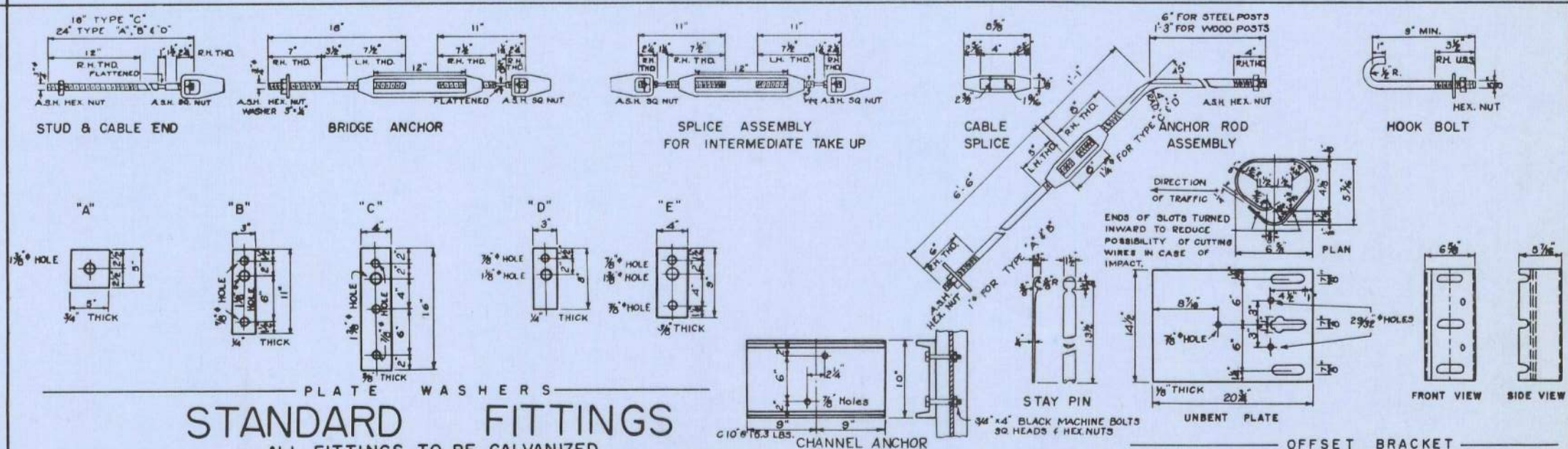
GUARD RAIL TYPE "D"



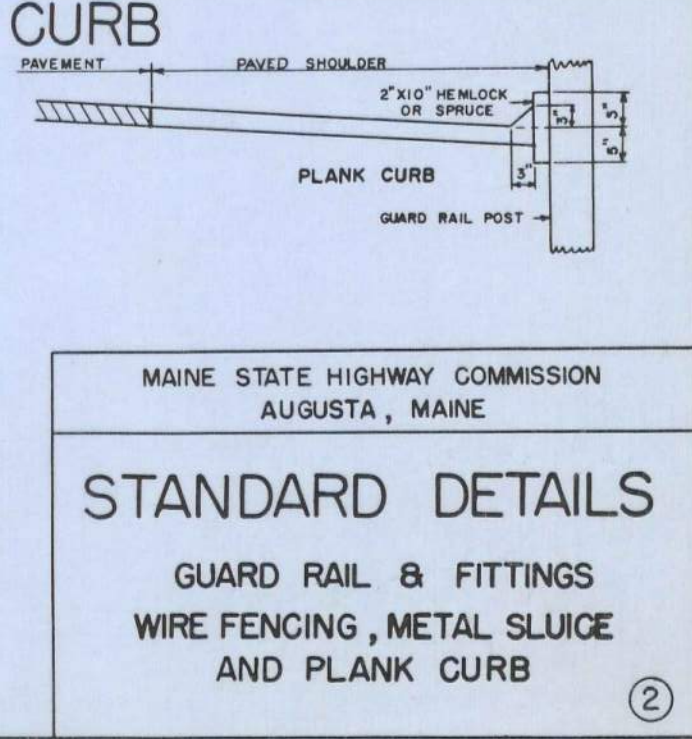
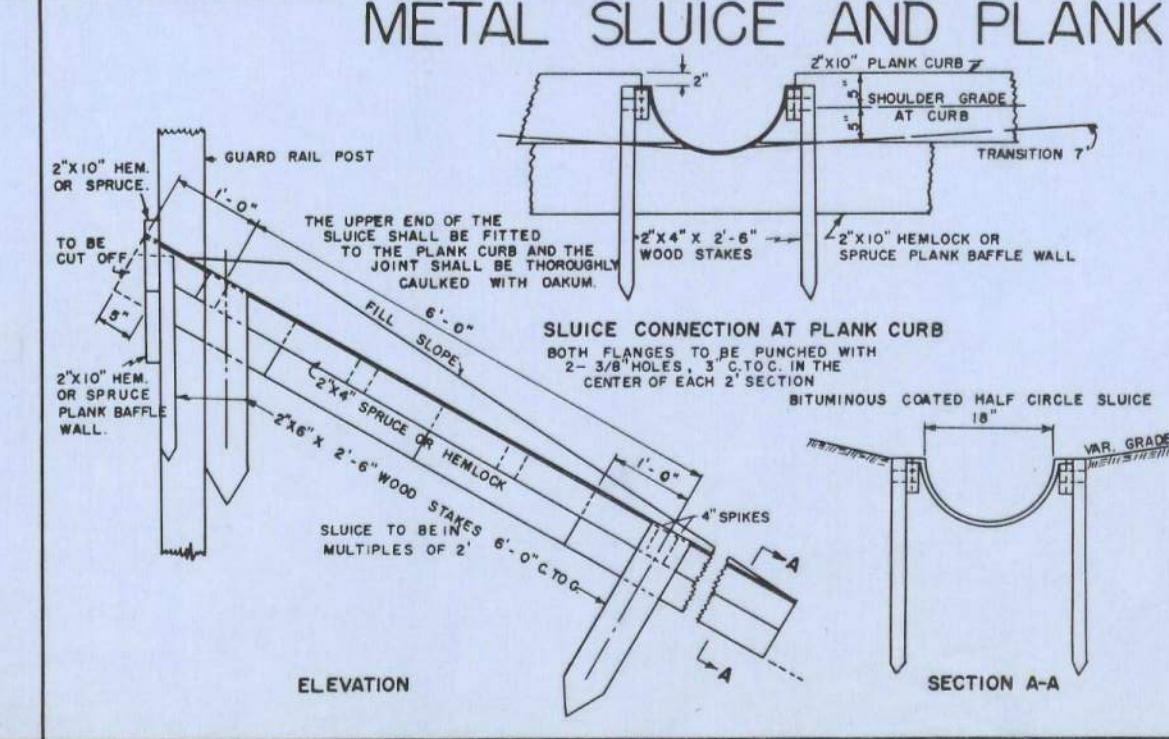
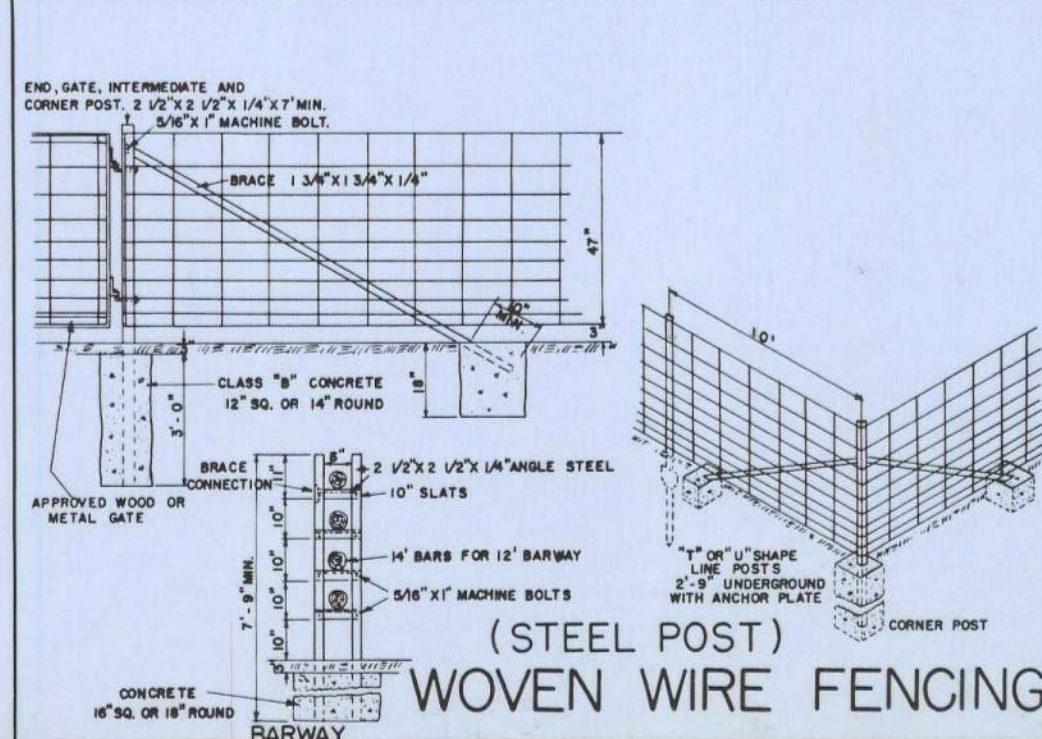
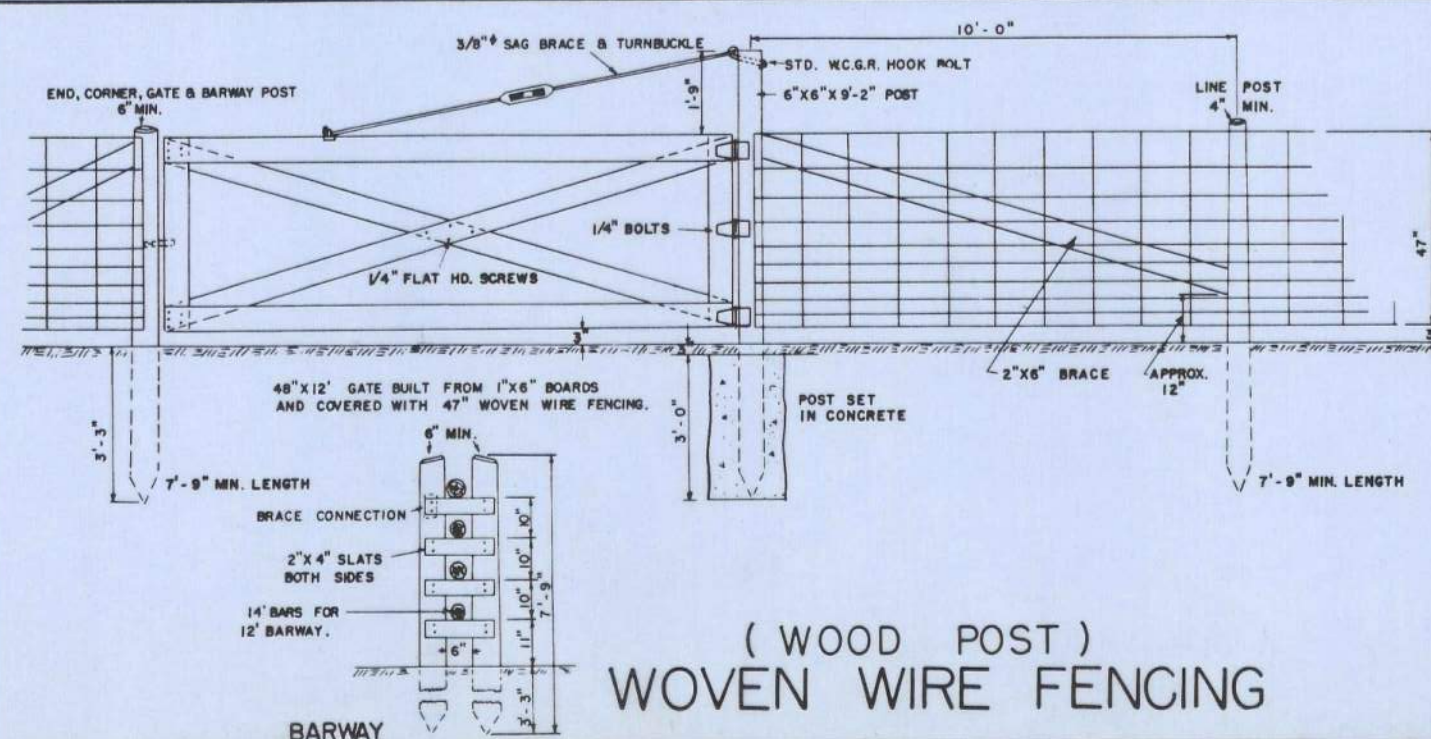
GUARD RAIL TYPE "E", "F" & "G"



GUARD RAIL TYPE "H"

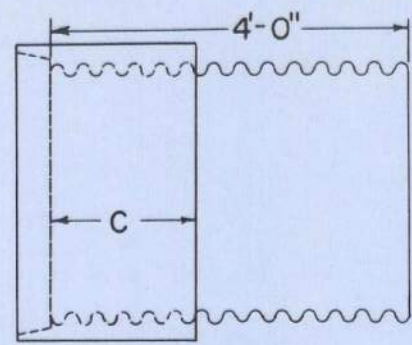


STANDARD FITTINGS





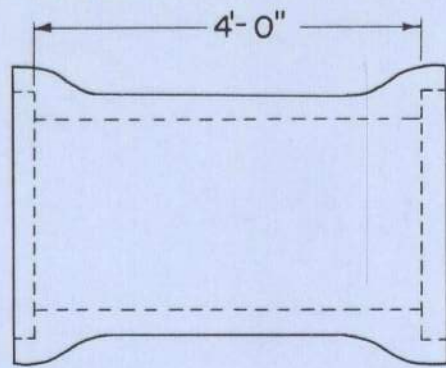
## PIPE CONNECTIONS



**GROOVE END COMBINATION**  
For 30" to 72" inclusive, diameter connection  
between concrete and metal pipe

"C" = 17" min. for sizes 30" to 48" incl.  
"C" = 23" min. for sizes over 48"

Asphalt coated corrugated metal pipe  
shall conform to the latest  
standard specifications

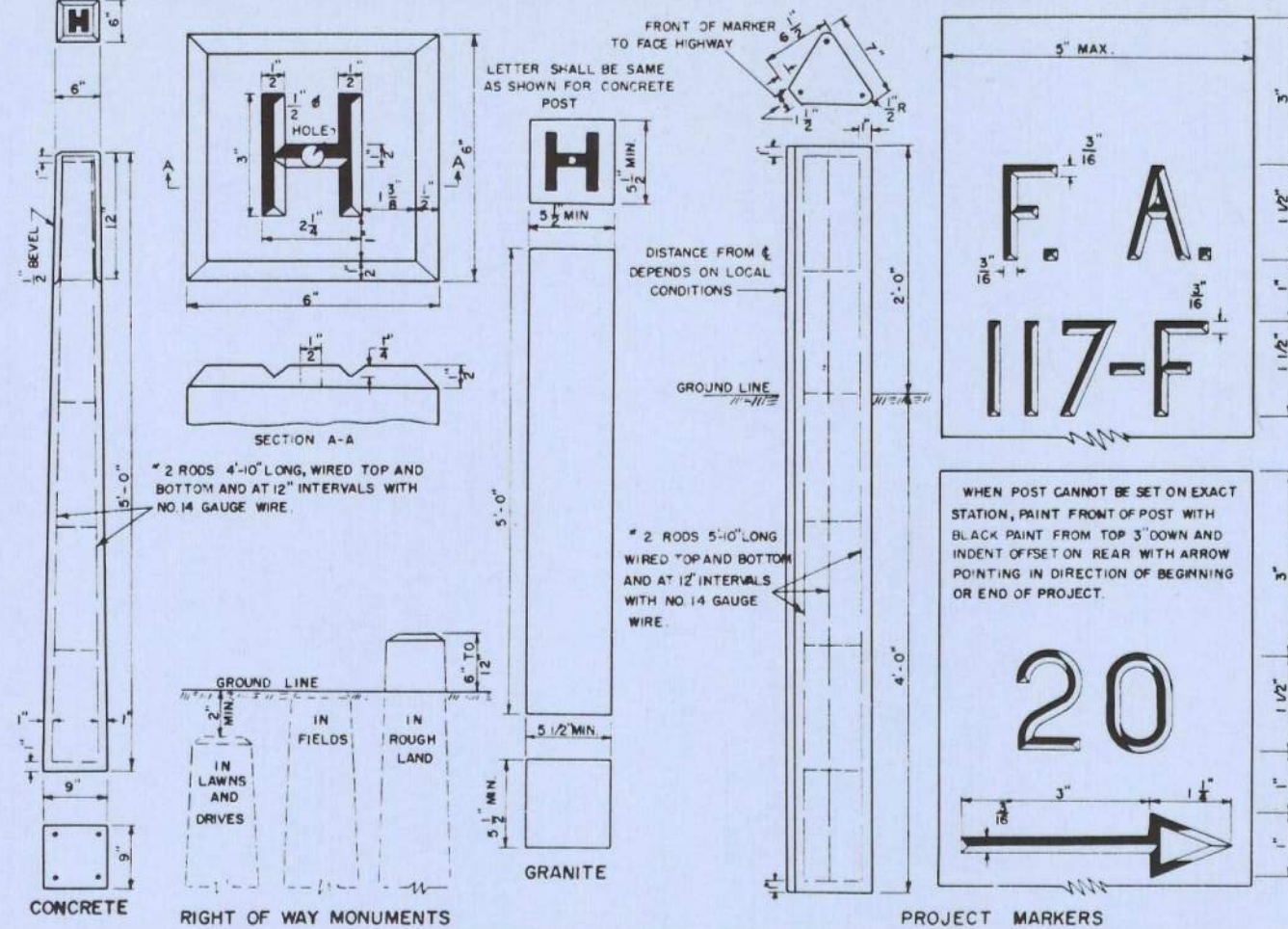


**REINFORCED CONCRETE PIPE CONNECTOR  
DOUBLE BELL**

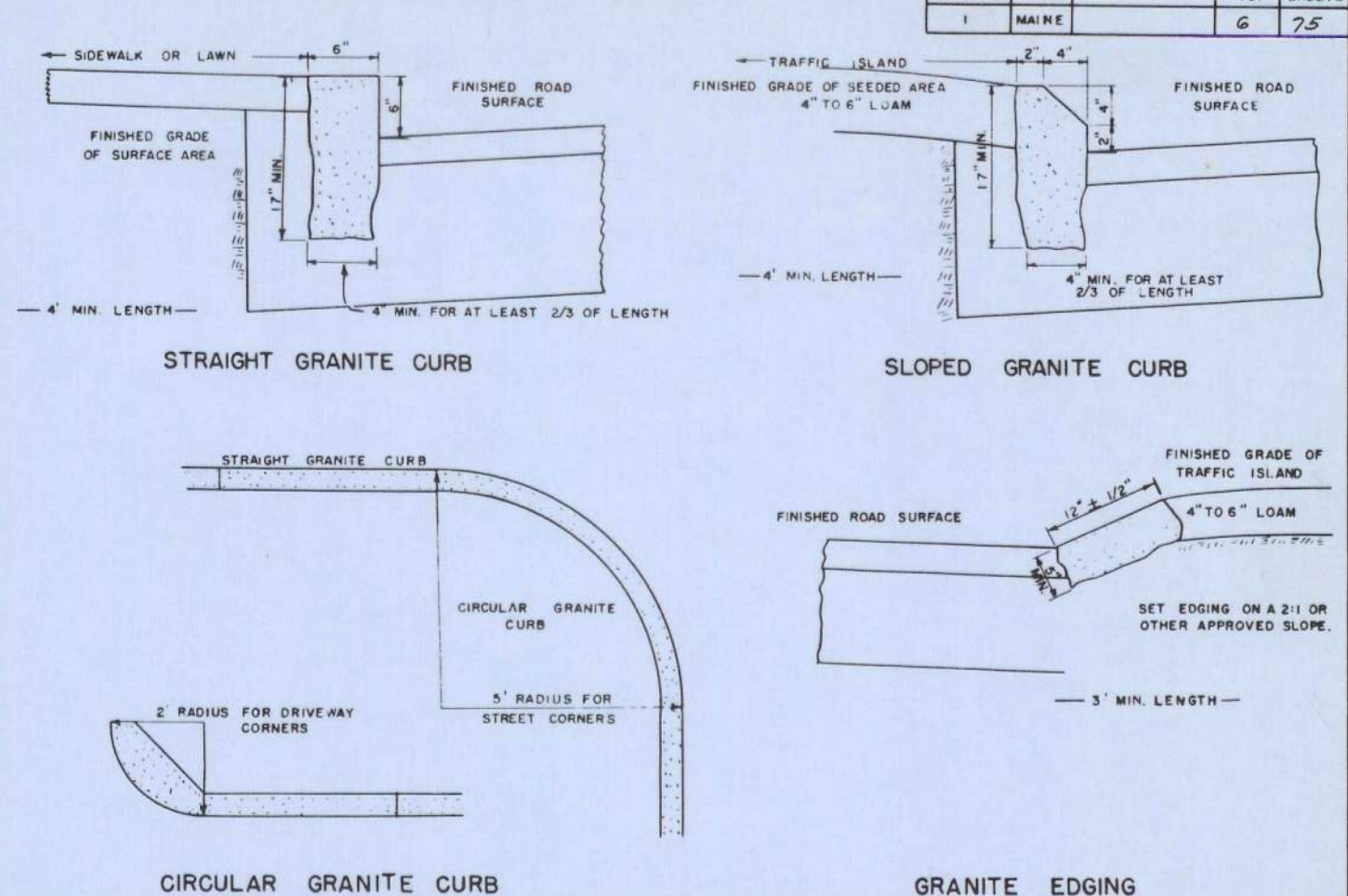
For 12" to 24" inclusive, diameter connection  
between concrete and metal pipe

Reinforced concrete pipe shall  
conform to the latest standard  
specifications

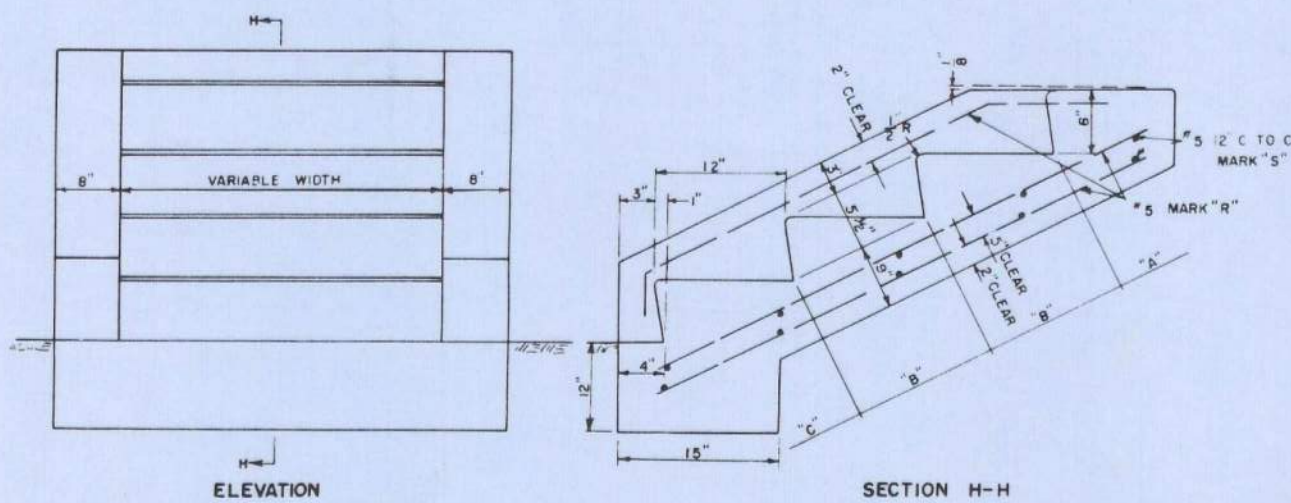
## RIGHT OF WAY MONUMENTS & PROJECT MARKERS



## GRANITE CURB & EDGING



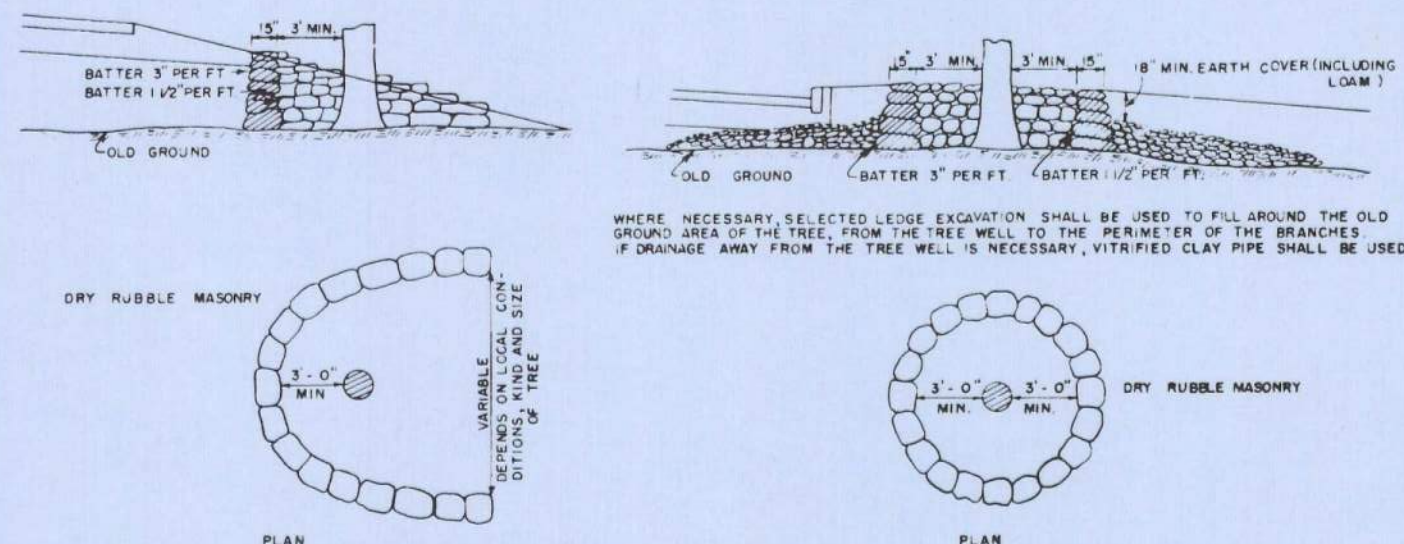
## CONCRETE STEPS



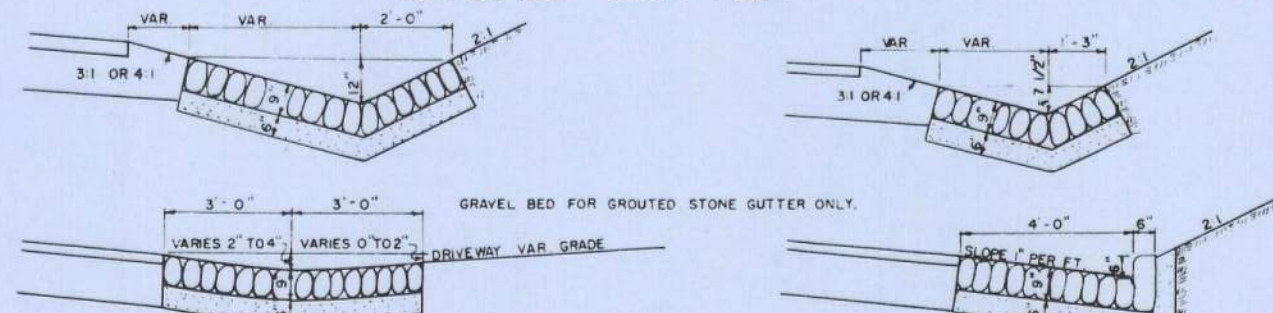
CONCRETE CLASS "A"		
SECTION	STEPS PER FT. OF WIDTH	PARAPET EACH WALL
"A" HEADER	.032 CU. YDS.	.022 CU. YDS.
"B" EA. INTER ST.	.040 CU. YDS.	.040 CU. YDS.
"C" FOOTER	.071 CU. YDS.	.065 CU. YDS.

REINFORCING STEEL			
MARK	SIZE	NUMBER	LENGTH (EACH)
R	#5	3 EACH PARAPET 1043 LBS PER FT.	8" FOR "A" +13" FOR EACH "B" +16" FOR "C"
S	#5	2 FOR "A" 2 FOR EACH "B" 4 FOR "C" 1043 LBS PER FT.	6" EACH PARAPET +12" PER FT. OF WIDTH

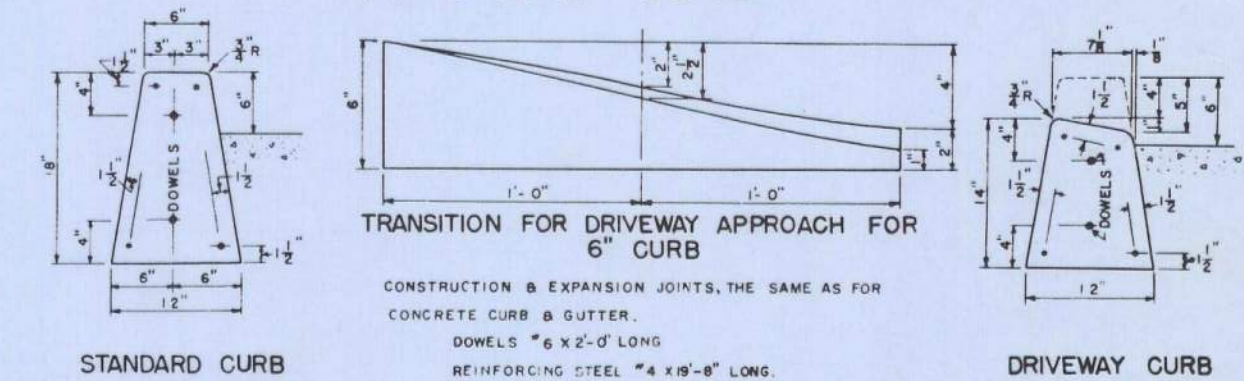
## TREE WELLS



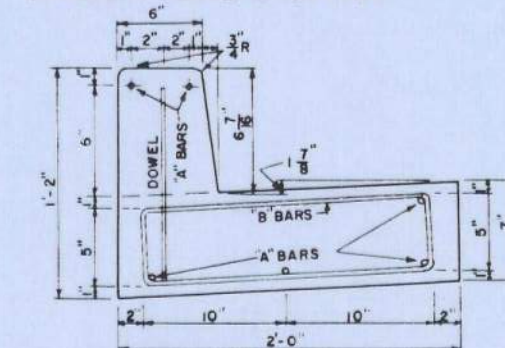
## STONE GUTTER



## CONCRETE CURB

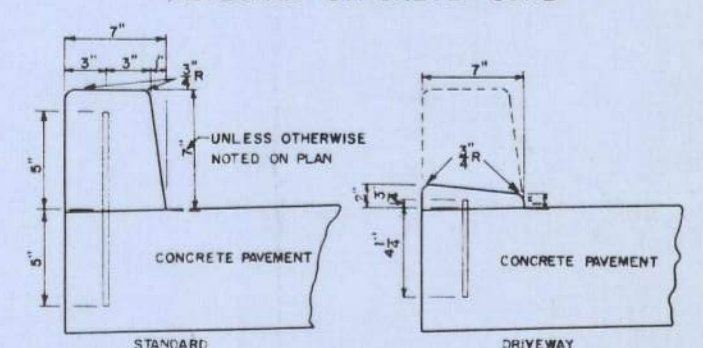


### CONCRETE CURB & GUTTER



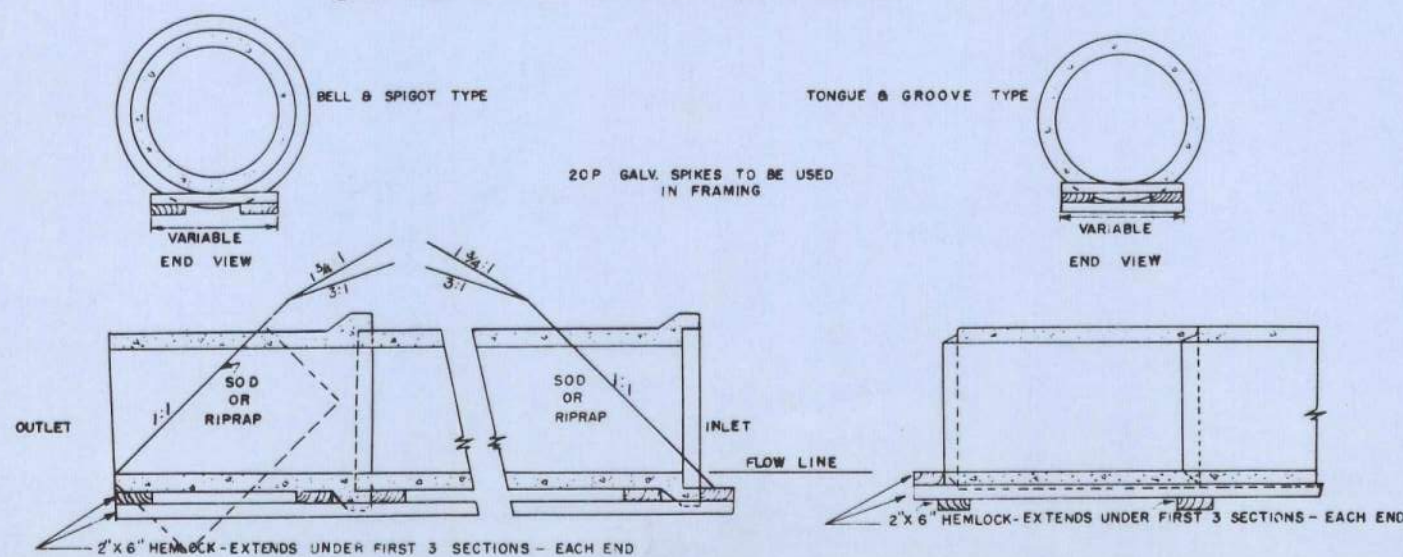
TO BE CONSTRUCTED IN 20' SECTIONS. CONSTRUCTION JOINTS TO BE PAINTED WITH BITUMINOUS MATERIAL. EXPANSION JOINTS EVERY 40' 1/2" THICK PREMOULDED MATERIAL SHALL BE PLACED IN EACH EXPANSION JOINT.  
"A" BARS #3 X 8'-0" LONG. "B" BARS #3 X 4'-6" LONG. PLACE "A" BARS 1'-3" FROM EACH END OF THE SECTION AND THEN SHAPE THEM 3'-6" TO C. THE REST OF THE SECTION. DOWELS #4 X 1'-0" LONG, SPACED 1'-0" C TO C.

### INTEGRAL CONCRETE CURB

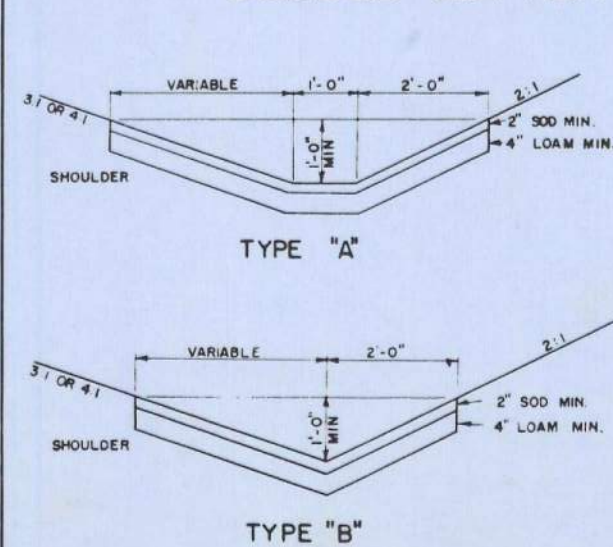


EXPANSION & DUMMY JOINTS IN CURB SHALL BE CONSTRUCTED AT SAME LOCATION AS EXPANSION & DUMMY JOINTS IN CONCRETE PAVEMENT.  
DOWELS #4 SPACED 1'-0" C TO C. FIRST DOWEL TO BE PLACED 6" FROM END OF JOINT.

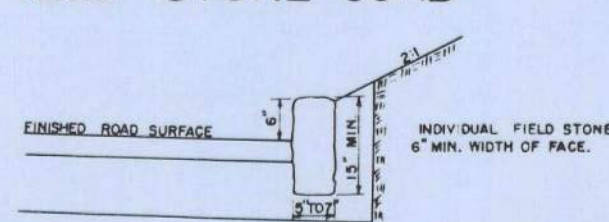
## CONCRETE PIPE CRADLE



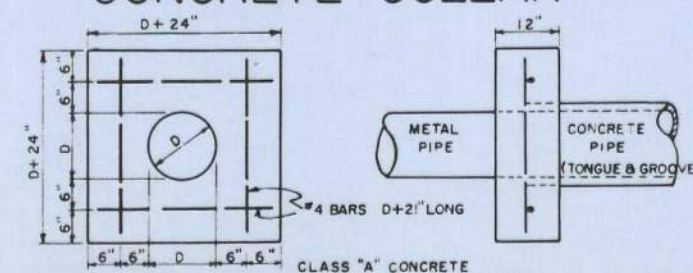
## SODDED GUTTER



## FIELD STONE CURB



## CONCRETE COLLAR

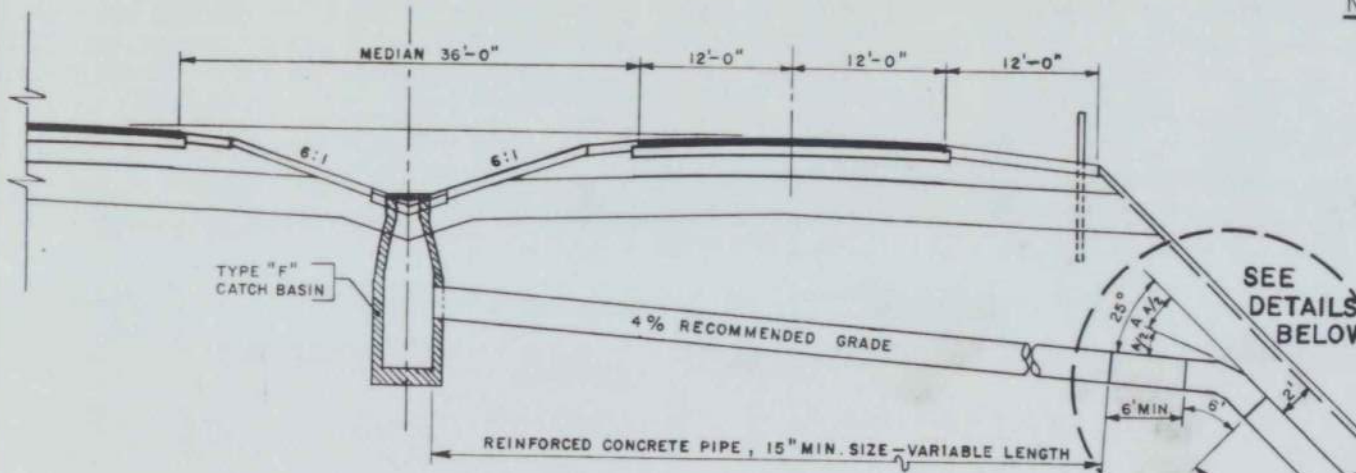


MAINE STATE HIGHWAY COMMISSION  
AUGUSTA, MAINE

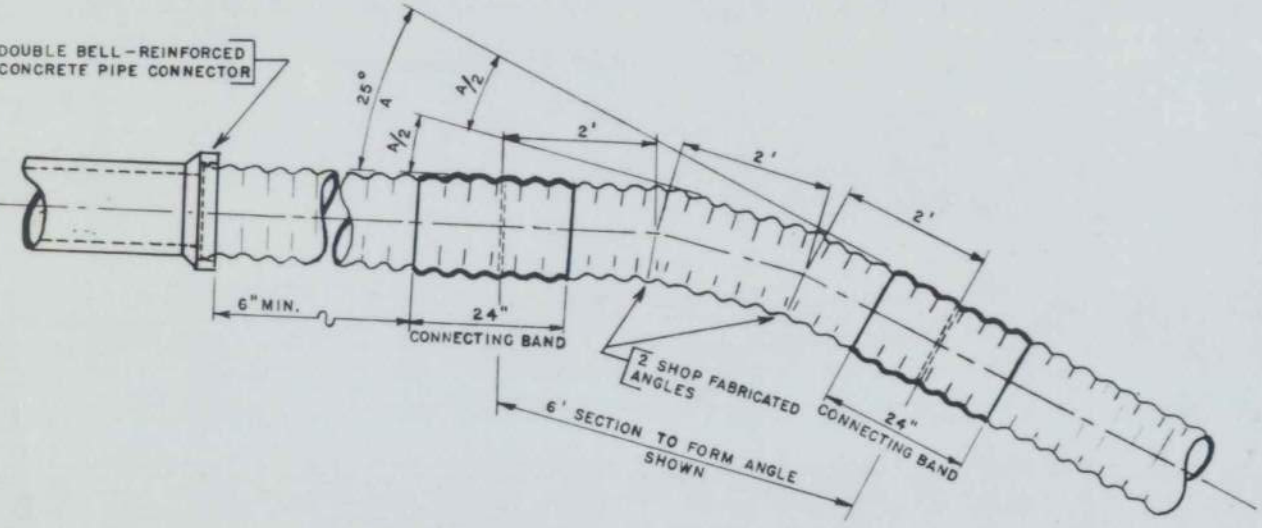
**STANDARD DETAILS**  
MISCELLANEOUS ITEMS



BENDS AND BANDS for A.C.C.M.P. MEDIAN DRAINAGE



DRAINAGE SECTION



DETAIL OF SIX-FOOT BENDS

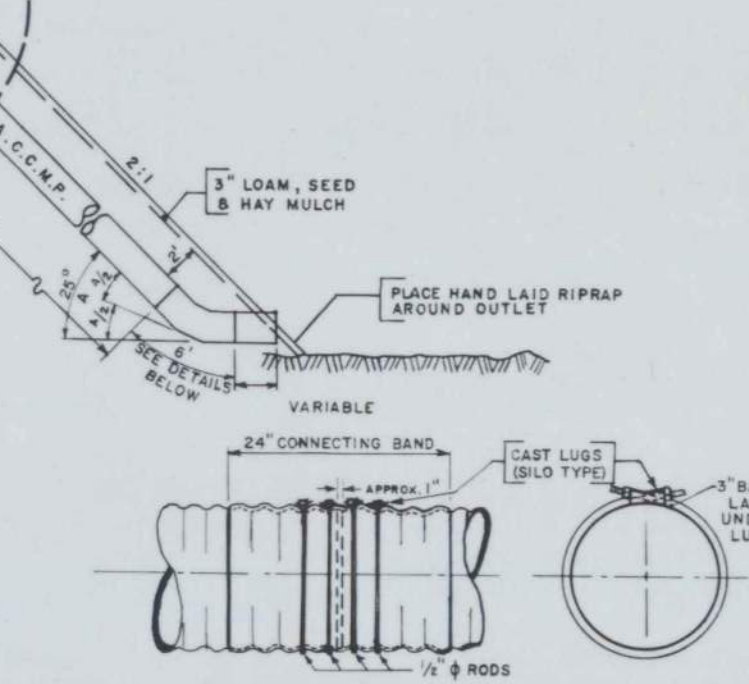
NOTE: 24" CONNECTING BANDS SHALL BE USED ON THE ENDS OF EACH ANGLE SECTION. THESE BANDS SHALL BE WATER TIGHT AND DRAWN SECURE BY MEANS OF FOUR THREADED GALVANIZED RODS 1/2" ROUND, PLACED UNIFORMLY EACH SIDE OF THE PIPE ENDS, AND TIGHTENED WITH SILO TYPE LUGS. THE LONGITUDINAL SEAM UNDER THE COLLAR SHALL BE WELDED AND RIVETS OMITTED.

WHEN STRAIGHT LENGTH OF A.C.C.M.P. ON SLOPE EXCEEDS 20 FEET, 24" BAND OR BANDS SHALL BE USED IN THE SAME MANNER AS DESCRIBED ABOVE.

AN ITEM COVERING EACH SIZE OF 24" CONNECTING BANDS SHALL BE INCLUDED IN THE PROPOSAL.

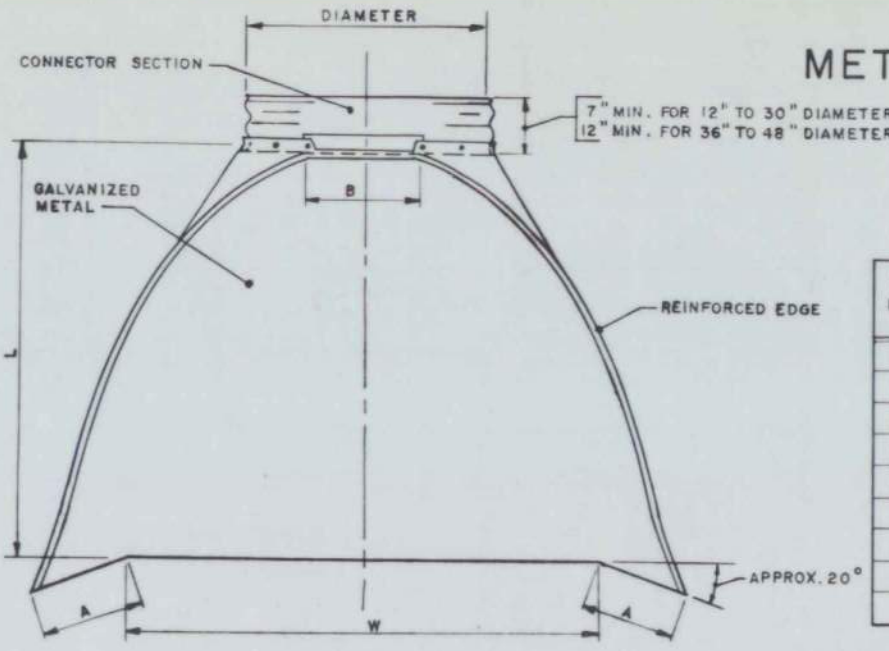
BID ITEMS FOR 15", 18" & 24" A.C.C.M.P. SIX FOOT SECTION TO FORM 25° ANGLE SHALL BE SHOWN IN THE ITEM DESCRIPTION AS "SIX FOOT BENDS".

WHEN FILL IS 10' OR MORE IN DEPTH AT THE OUTSIDE SHOULDER BERM USE OUTLET FROM CATCH BASIN AS SHOWN; WHEN FILL IS LESS THAN 10' USE STRAIGHT GRADE LINE FROM CATCH BASIN TO OUTLET END OF PIPE.

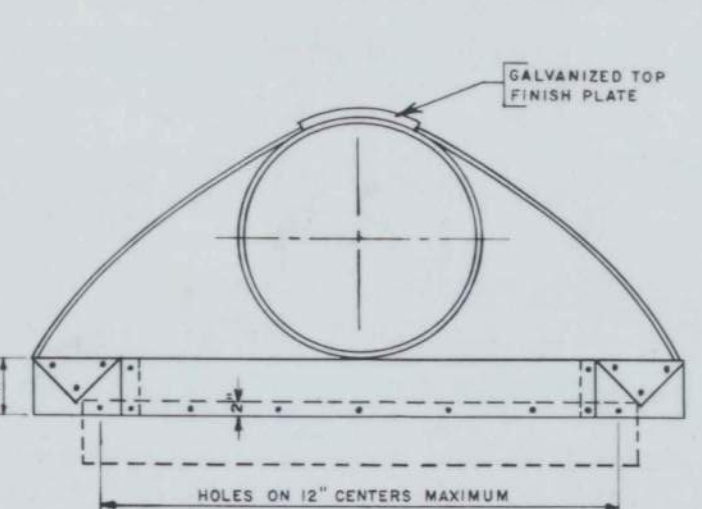


DETAIL OF 24" CONNECTING BANDS

METAL ENDWALLS



PLAN



ELEVATION

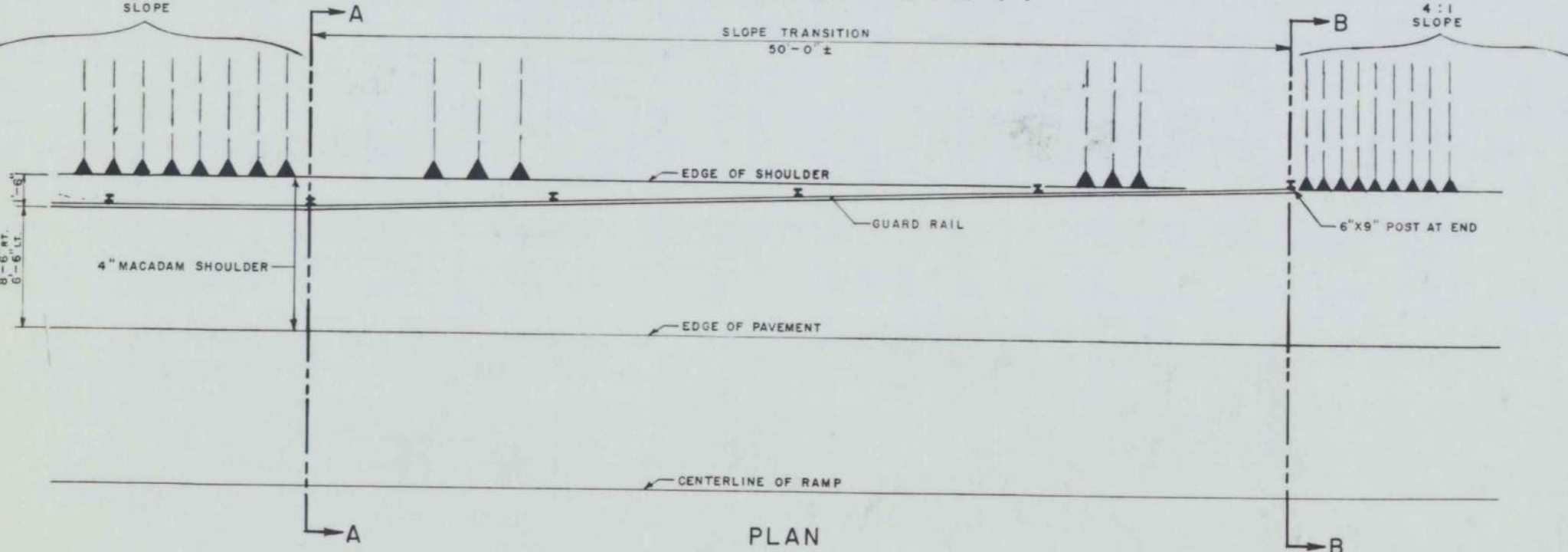
PIPE DIAM.	GAUGE	DIMENSIONS					
		A 1" TOL.	B MAX.	H 1" TOL.	L 1 1/2" TOL.	W 2" TOL.	
12"	16	4 3/4"	6"	6"	21"	24"	
15"	16	6"	8"	6"	26"	30"	
18"	16	7"	9"	6"	31"	36"	
21"	16	8 1/4"	11"	6"	36"	42"	
24"	14	9 1/4"	12"	6"	42"	48"	
30"	14	12"	15"	7 1/2"	52 1/2"	60"	
36"	12	14"	18"	9"	63"	72"	
42"	12	16"	21"	10 1/4"	73 1/2"	84"	

TOE PLATE TO BE PUNCHED TO MATCH HOLES IN SKIRT LIP. LENGTH OF TOE PLATE IS W+10" FOR 12" TO 30" DIAMETER PIPE, INCLUSIVE, AND W+22 FOR 36" TO 42" DIAMETER PIPE INCLUSIVE.

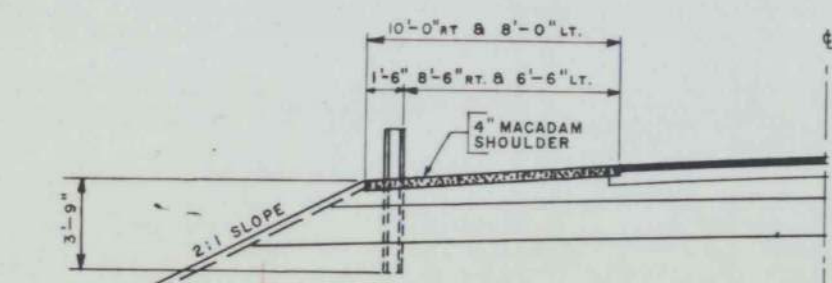
SKIRT SECTION FOR 12" TO 24" DIAMETER PIPE, INCLUSIVE, TO BE MADE IN ONE PIECE. SKIRT SECTION FOR 30" TO 48" DIAMETER PIPE MAY BE MADE FROM TWO SHEETS JOINED BY RIVETING OR BOLTING ON CENTERLINE.

CONNECTOR SECTION, CORNER PLATE AND TOE PLATE TO BE SAME GAUGE AS SKIRT AND EACH TO BE GALVANIZED. TOE PLATE TO BE INCLUDED IN UNIT COST.

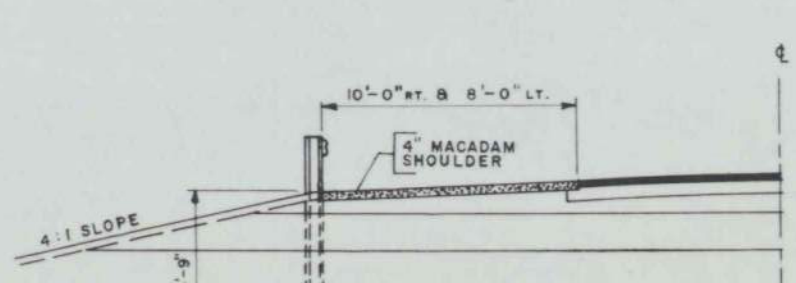
GUARD RAIL LOCATION ON RAMPS AT SLOPE TRANSITION ~ 2:1 to 4:1



PLAN

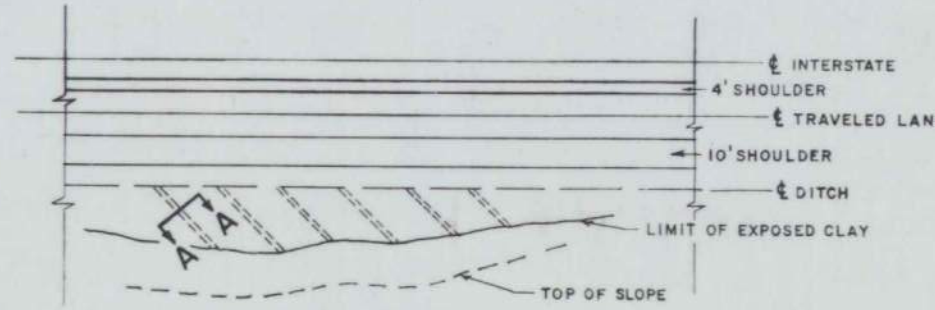


SECTION A-A

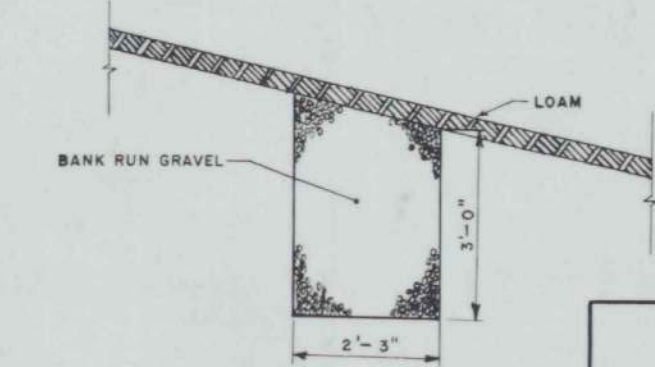


SECTION B-B

CUT SLOPE DRAIN

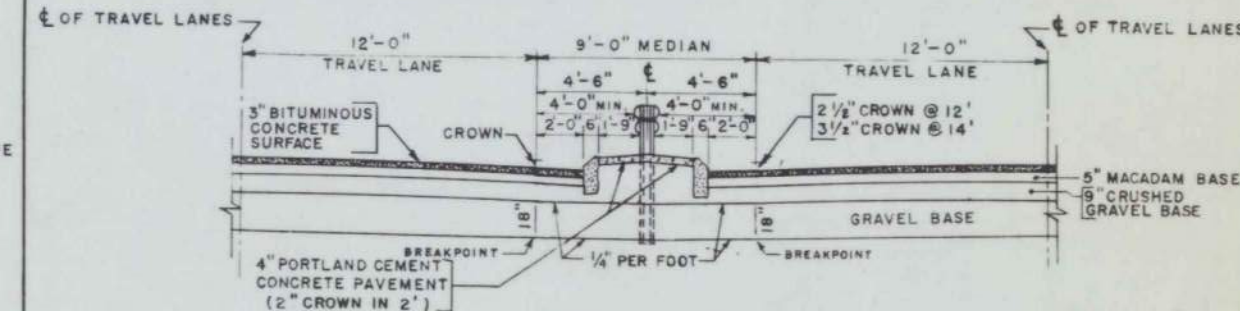


PLAN

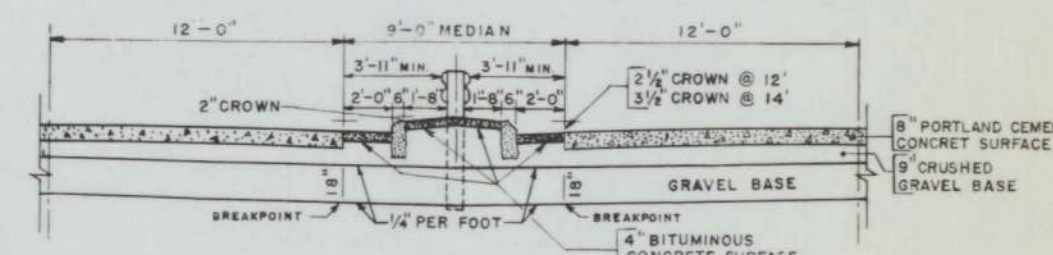


SECTION A-A

9-FOOT MEDIAN

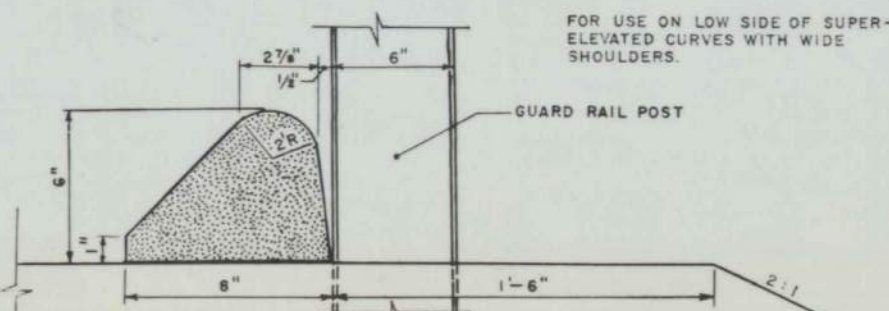


STEEL POST



WOOD POST

BITUMINOUS CONCRETE CURB

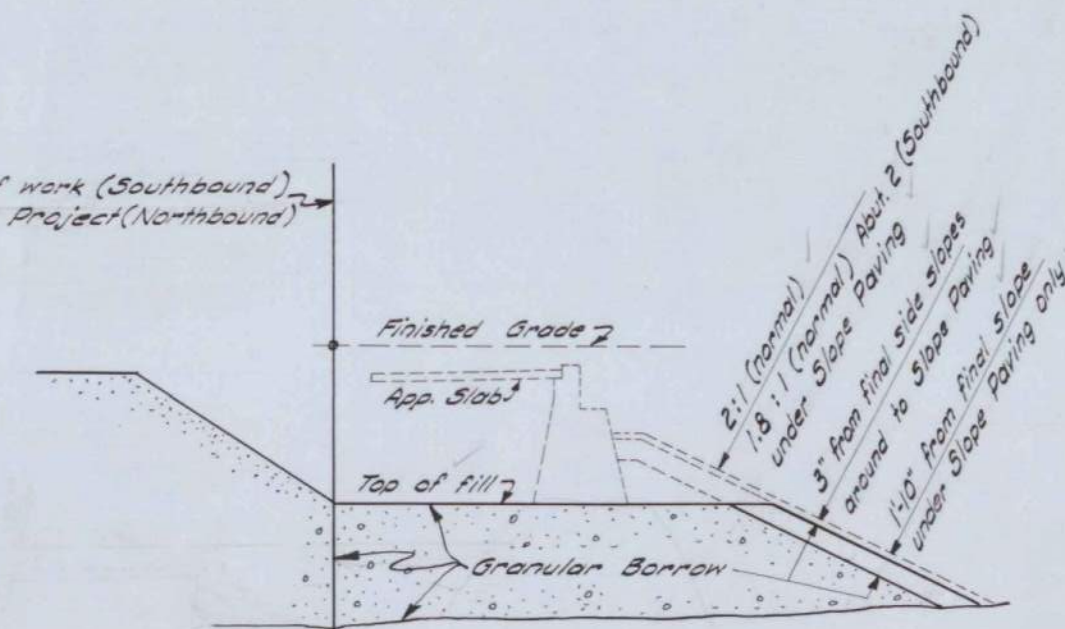
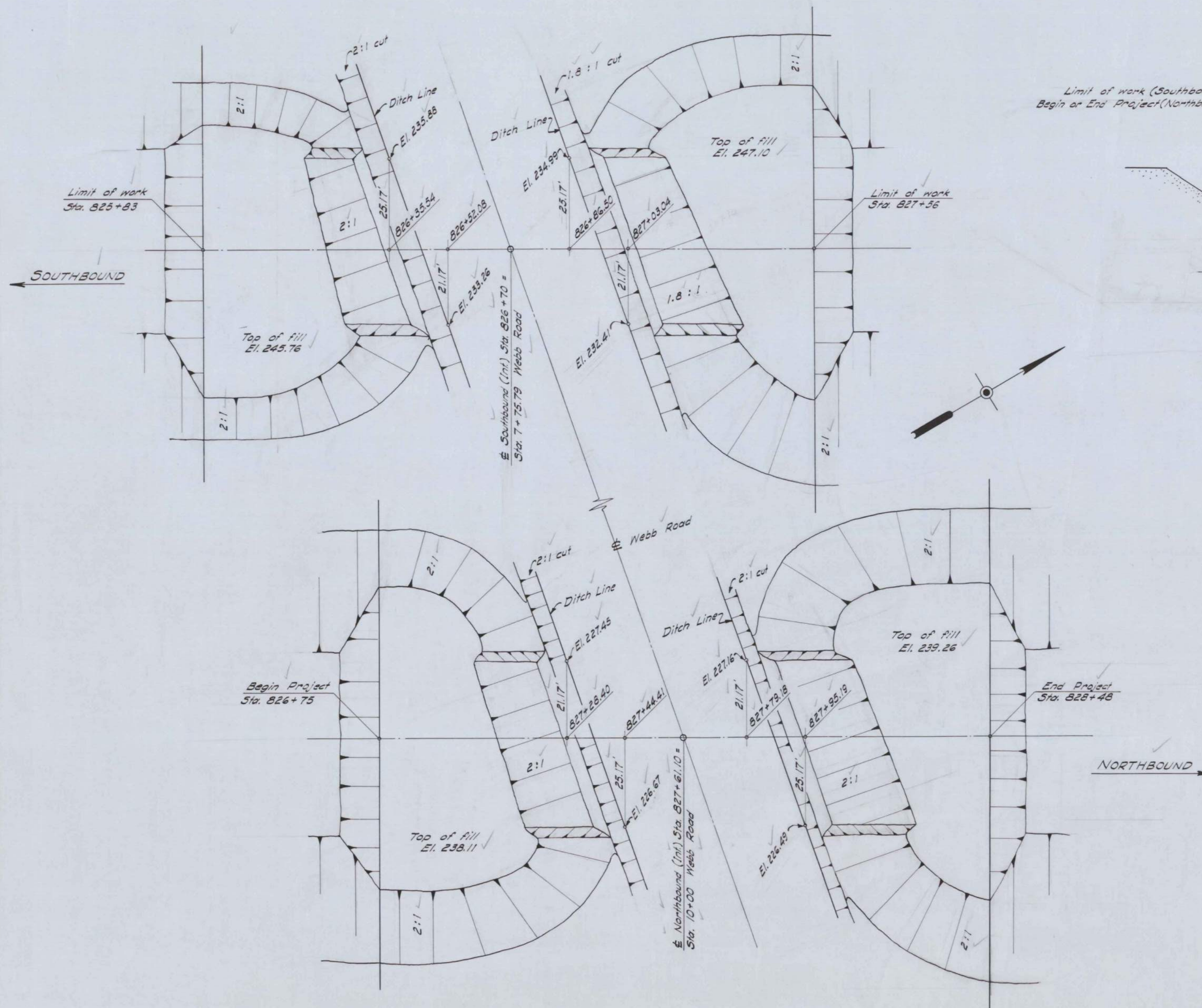


MAINE STATE HIGHWAY COMMISSION  
AUGUSTA, MAINE

**STANDARD DETAILS**

BENDS & BANDS, METAL ENDWALLS, GUARD RAIL ON RAMPS, CUT SLOPE DRAIN, 9-FOOT MEDIAN & BITUMINOUS CONCRETE CURB





**ABUTMENT SECTION**  
Typical

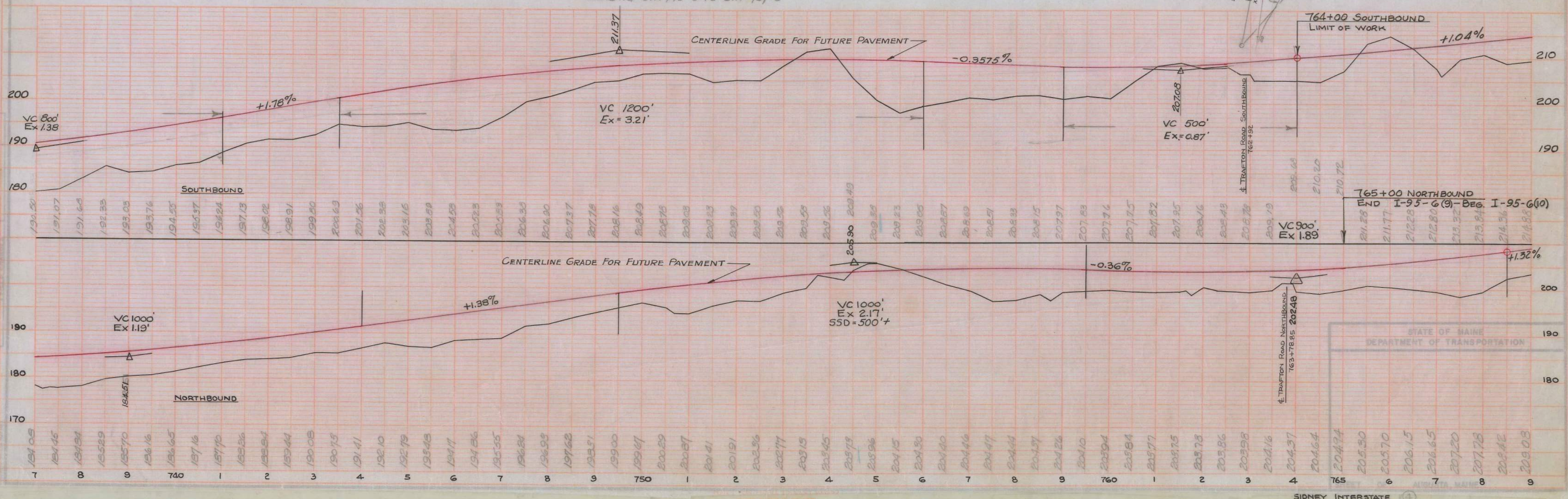
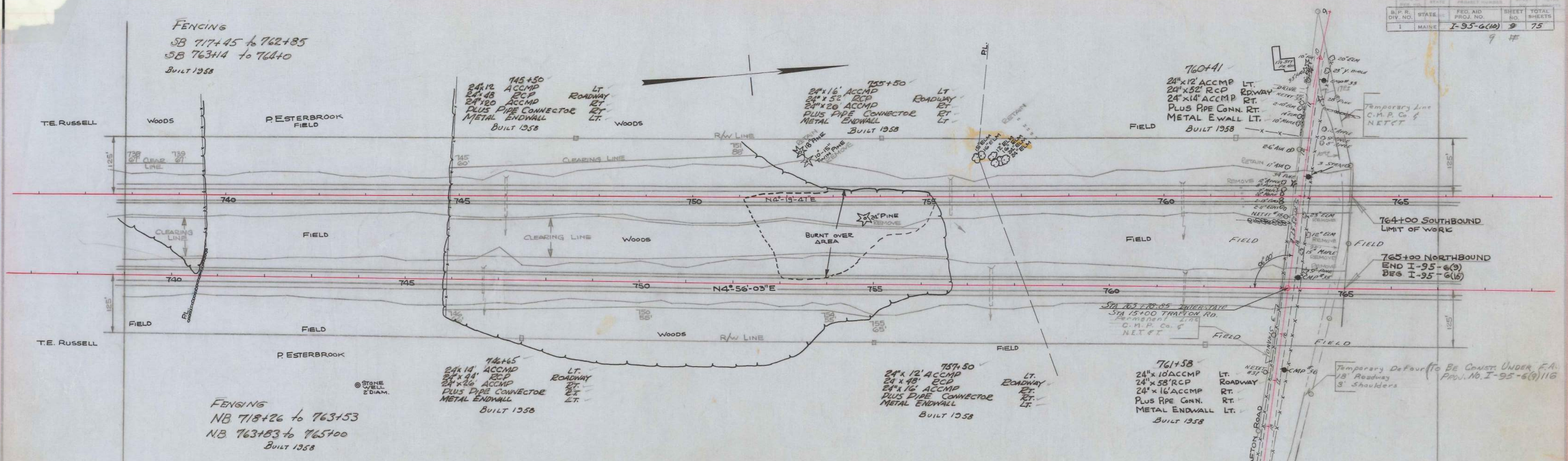
NOTE: Granular Borrow (shown outside the limits of work) at the abutments of Webb Road Bridge to be placed under this contract.  
Trees along Webb Rd. to be removed as part of this contract.



SHEET NO.	TOTAL SHEETS
9	75

PLAN  
SURVEY  
NOTES  
NO. 1  
NO. 2  
NO. 3  
NO. 4  
NO. 5  
NO. 6  
NO. 7  
NO. 8  
NO. 9  
NO. 10  
NO. 11  
NO. 12  
NO. 13  
NO. 14  
NO. 15  
NO. 16  
NO. 17  
NO. 18  
NO. 19  
NO. 20  
NO. 21  
NO. 22  
NO. 23  
NO. 24  
NO. 25  
NO. 26  
NO. 27  
NO. 28  
NO. 29  
NO. 30  
NO. 31  
NO. 32  
NO. 33  
NO. 34  
NO. 35  
NO. 36  
NO. 37  
NO. 38  
NO. 39  
NO. 40  
NO. 41  
NO. 42  
NO. 43  
NO. 44  
NO. 45  
NO. 46  
NO. 47  
NO. 48  
NO. 49  
NO. 50  
NO. 51  
NO. 52  
NO. 53  
NO. 54  
NO. 55  
NO. 56  
NO. 57  
NO. 58  
NO. 59  
NO. 60  
NO. 61  
NO. 62  
NO. 63  
NO. 64  
NO. 65  
NO. 66  
NO. 67  
NO. 68  
NO. 69  
NO. 70  
NO. 71  
NO. 72  
NO. 73  
NO. 74  
NO. 75  
NO. 76  
NO. 77  
NO. 78  
NO. 79  
NO. 80  
NO. 81  
NO. 82  
NO. 83  
NO. 84  
NO. 85  
NO. 86  
NO. 87  
NO. 88  
NO. 89  
NO. 90  
NO. 91  
NO. 92  
NO. 93  
NO. 94  
NO. 95  
NO. 96  
NO. 97  
NO. 98  
NO. 99  
NO. 100

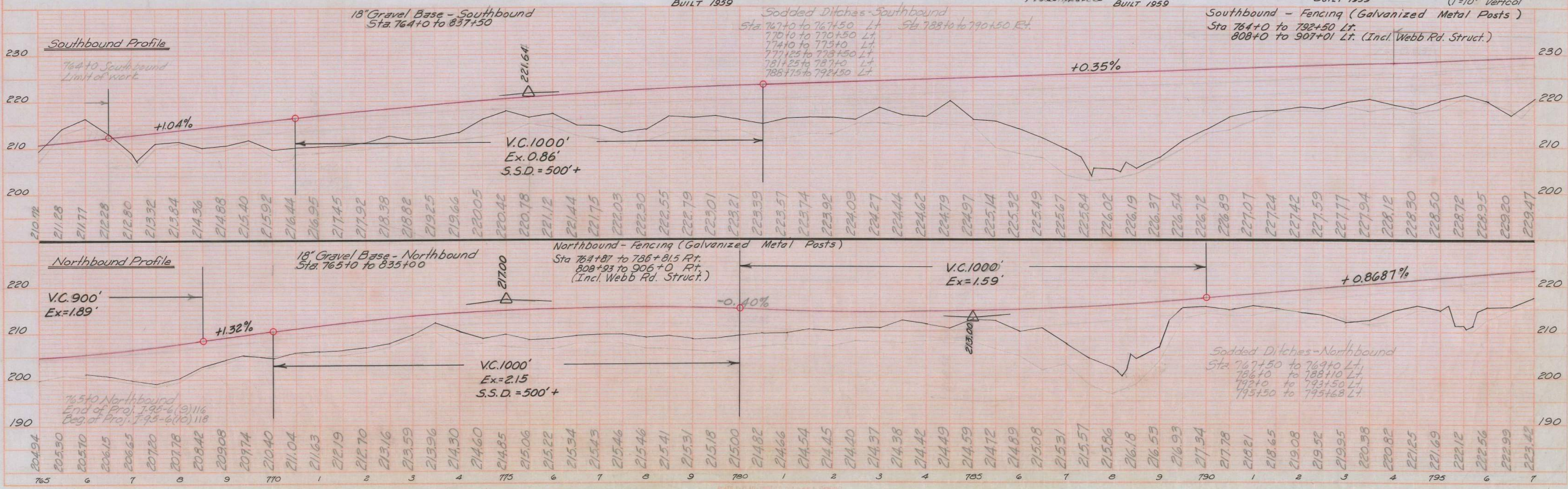
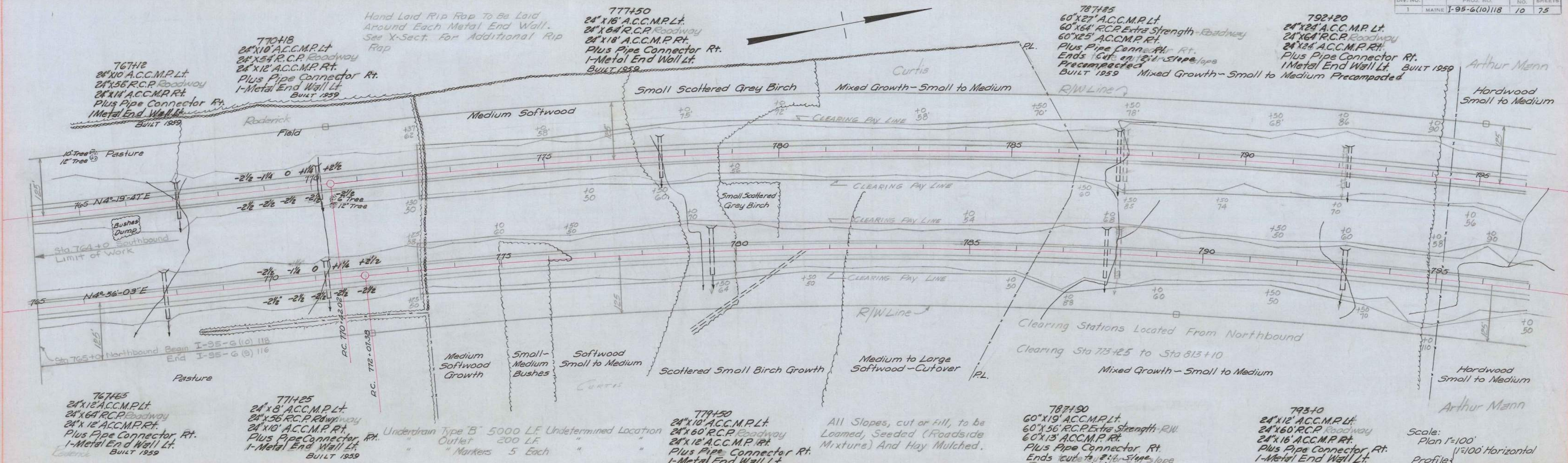
DATE  
BY  
PROJECT  
DESIGNED  
CHECKED  
APPROVED  
REVISIONS





PLAN  
REVISIONS  
DATE  
BY  
CHECKED  
DATE  
BY  
NOTES  
BOOK  
DRAWN  
DATE  
BY  
NOTES  
BOOK  
DRAWN  
DATE  
BY

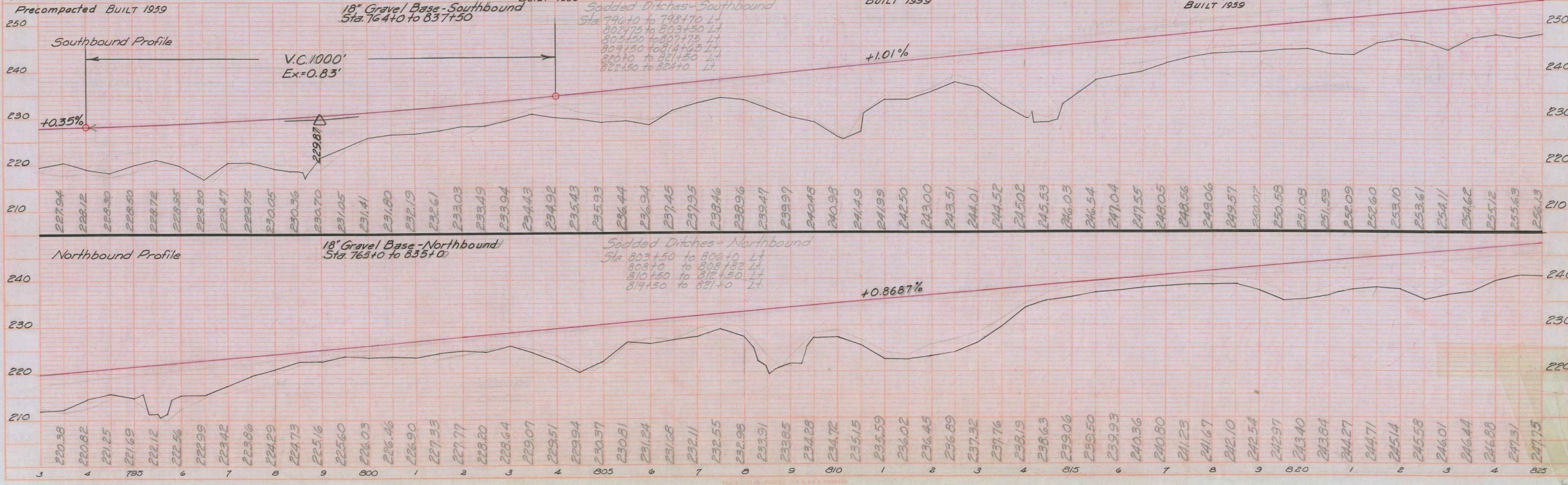
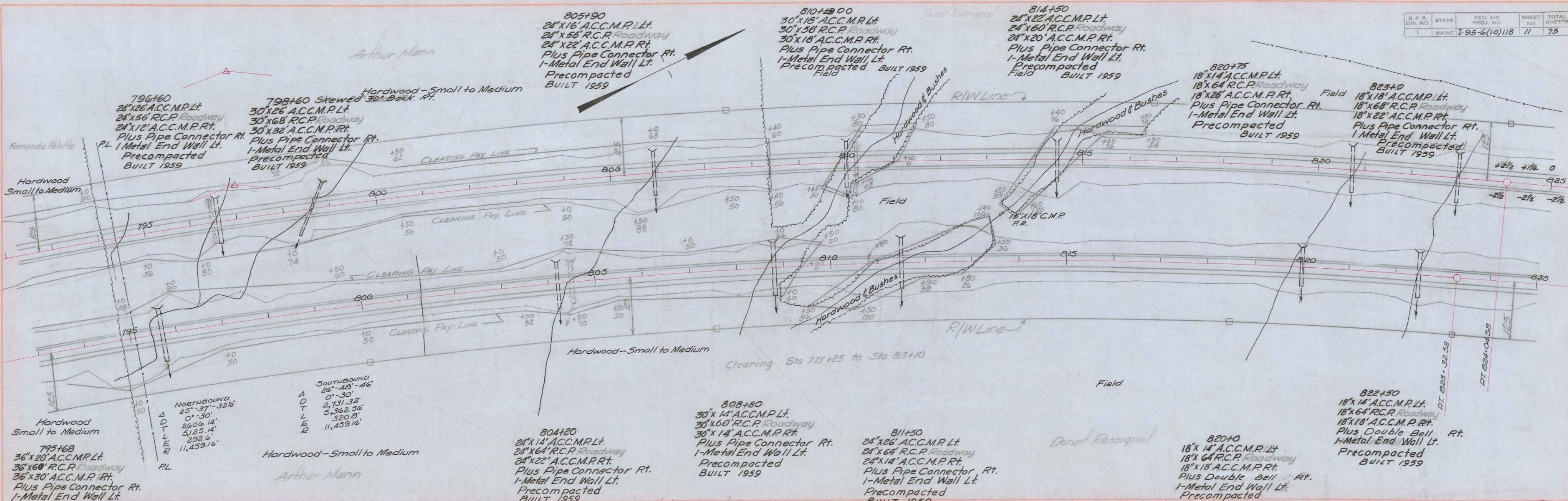
PROFILE  
REVISIONS  
DATE  
BY  
CHECKED  
DATE  
BY  
NOTES  
BOOK  
DRAWN  
DATE  
BY  
NOTES  
BOOK  
DRAWN  
DATE  
BY





PLAN  
DATE  
BY  
CHECKED  
NOTED  
NO.

PROFILE  
DATE  
BY  
CHECKED  
NOTED  
NO.

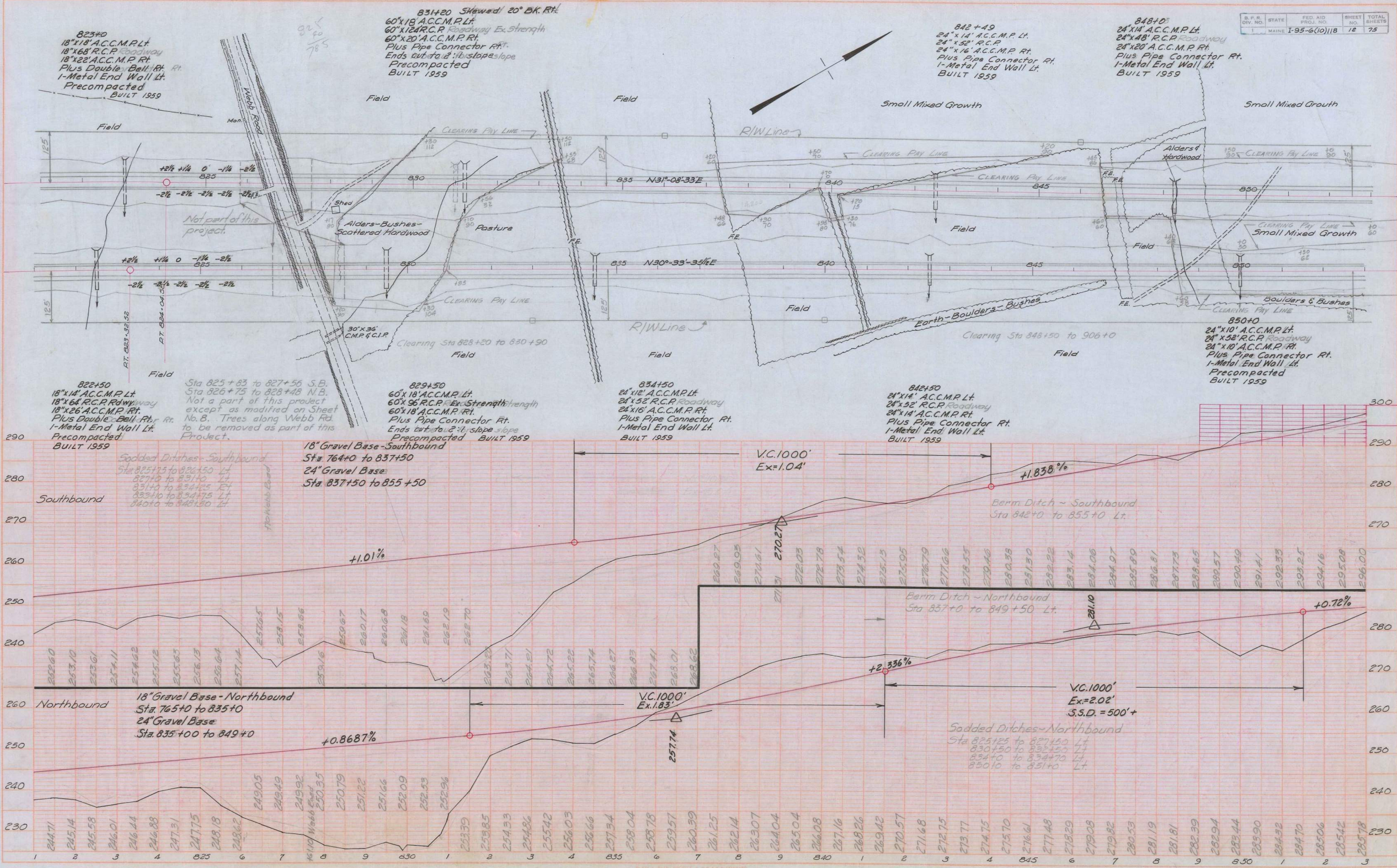




PLAN  
 SHEET NO. 12  
 TOTAL SHEETS 75  
 PROJECT NO. I-95-6(10)11B  
 STATE MAINE  
 DIV. NO. 1

PROFILE  
 SHEET NO. 12  
 TOTAL SHEETS 75  
 PROJECT NO. I-95-6(10)11B  
 STATE MAINE  
 DIV. NO. 1

S.P.R.	STATE	FED. AID	SHEET	TOTAL
DIV. NO.	MAINE	PROJ. NO.	NO.	SHEETS
1		I-95-6(10)11B	12	75





PLAN  
DATE  
BY  
CHECKED  
NOTES  
NO.

PROFILE  
DATE  
BY  
CHECKED  
NOTES  
NO.

