

# STATE OF MAINE STATE HIGHWAY COMMISSION

## PLANS

# AUGUSTA-SIDNEY KENNEBEC COUNTY MAINE FEDERAL AID INTERSTATE PROJECT NO. I-95-6(6)105

TOTAL LENGTH 5.393 MILES

SCALES

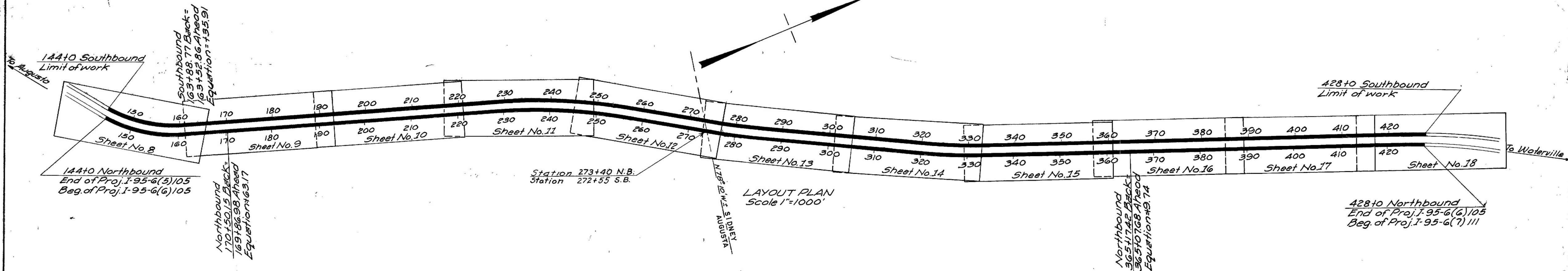
PLAN 1 IN. = 100 FT.  
PROFILE HOR. 1 IN. = 100 FT.  
VER. 1 IN. = 10 FT.  
CROSS SECTIONS 1 IN. = 10 FT.

### CONVENTIONAL SIGNS

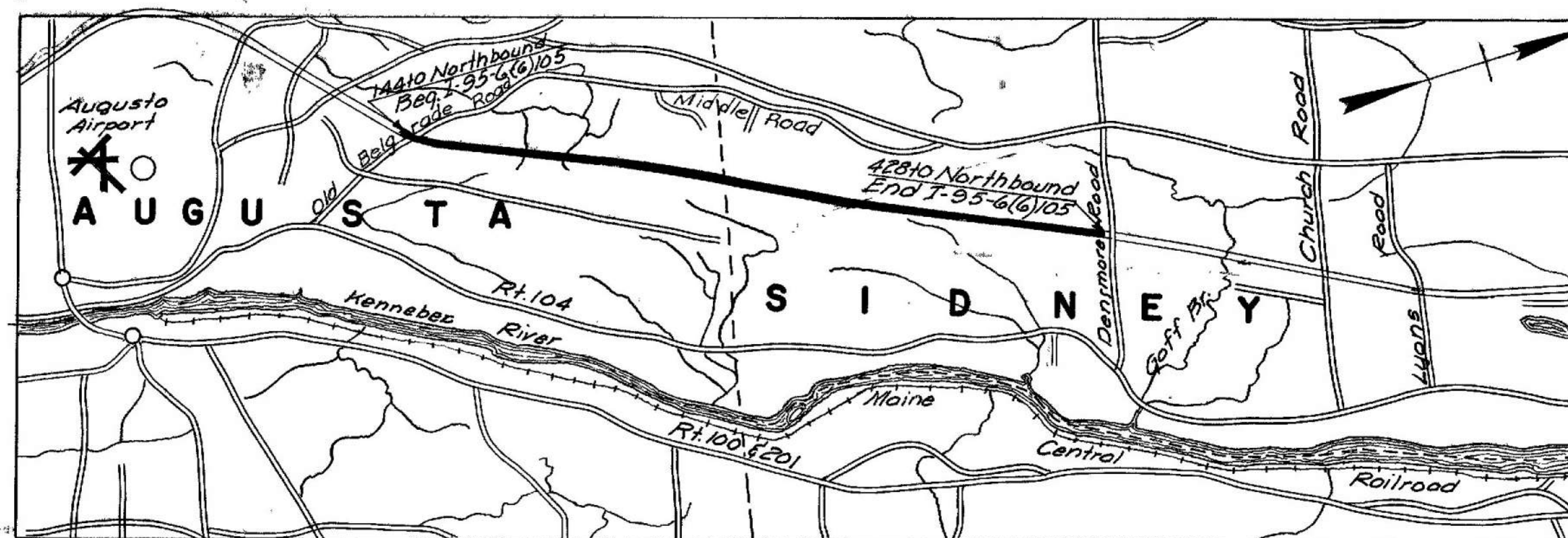
STATE OR NATIONAL LINE	----	SURVEY LINE	----
COUNTY LINE	----	CULVERT	----
TOWN LINE	----	DROP INLET	----
UNFENCED PROPERTY	----	TROLLEY POLE	----
FENCE	----	POWER POLE	----
RIGHT OF WAY LINE	----	TEL. POLE	----
TRAVELED WAY	----	MARSH	----
RAILROAD	----	TREES	----
RETAINING WALL	----	STONE WALL	----

### INDEX OF SHEETS

SHEET NO. 1	TITLE PAGE	STA. 144+00 - 428+00
SHEET NO. 2	TYPICAL SECTIONS	
SHEET NO. 3	QUANTITIES	
SHEET NO. 4-7 INCL.	STANDARD DETAILS	
SHEET NO. 8-18 INCL.	PLAN AND PROFILE	STA. 144+00 - 428+00
SHEET NO. 19-214 INCL.	CROSS-SECTIONS	STA. " " " "
SHEET NO.	BRIDGES	STA.
SHEET NO.	SPECIAL DETAILS	



LAYOUT PLAN  
Scale 1"=1000'



A Portion of Kennebec County  
Scale 1 inch = 1 mile

### TRAFFIC DATA

ADT	1960	7260
ADT	1980	9900
DHV		1485
D		65%
T		15%
V		60 MPH.

### NOTE:

ALL WORK CONTEMPLATED UNDER THIS CONTRACT TO BE GOVERNED BY AND IN CONFORMITY WITH THE SPECIFICATIONS ADOPTED JANUARY 1956 EXCEPT AS MODIFIED ON THESE PLANS AND IN THE SPECIAL PROVISIONS

### APPROVED:

MAINE STATE HIGHWAY COMMISSION

*David W. Shuman*  
CHAIRMAN

*W. L. Wilbourn*

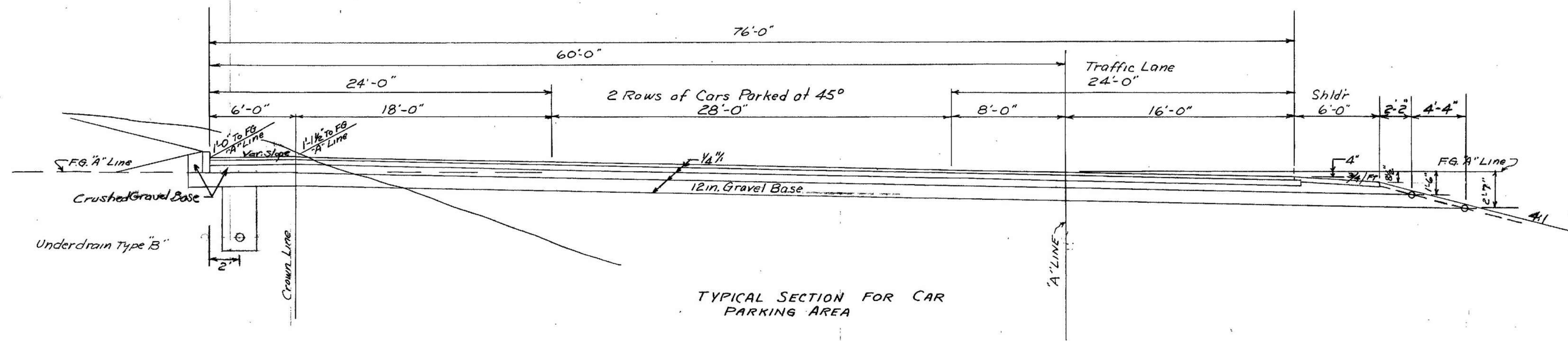
*Raymond J. [Signature]*  
CHIEF ENGINEER

DEPARTMENT OF COMMERCE  
BUREAU OF PUBLIC ROADS  
REGION 1

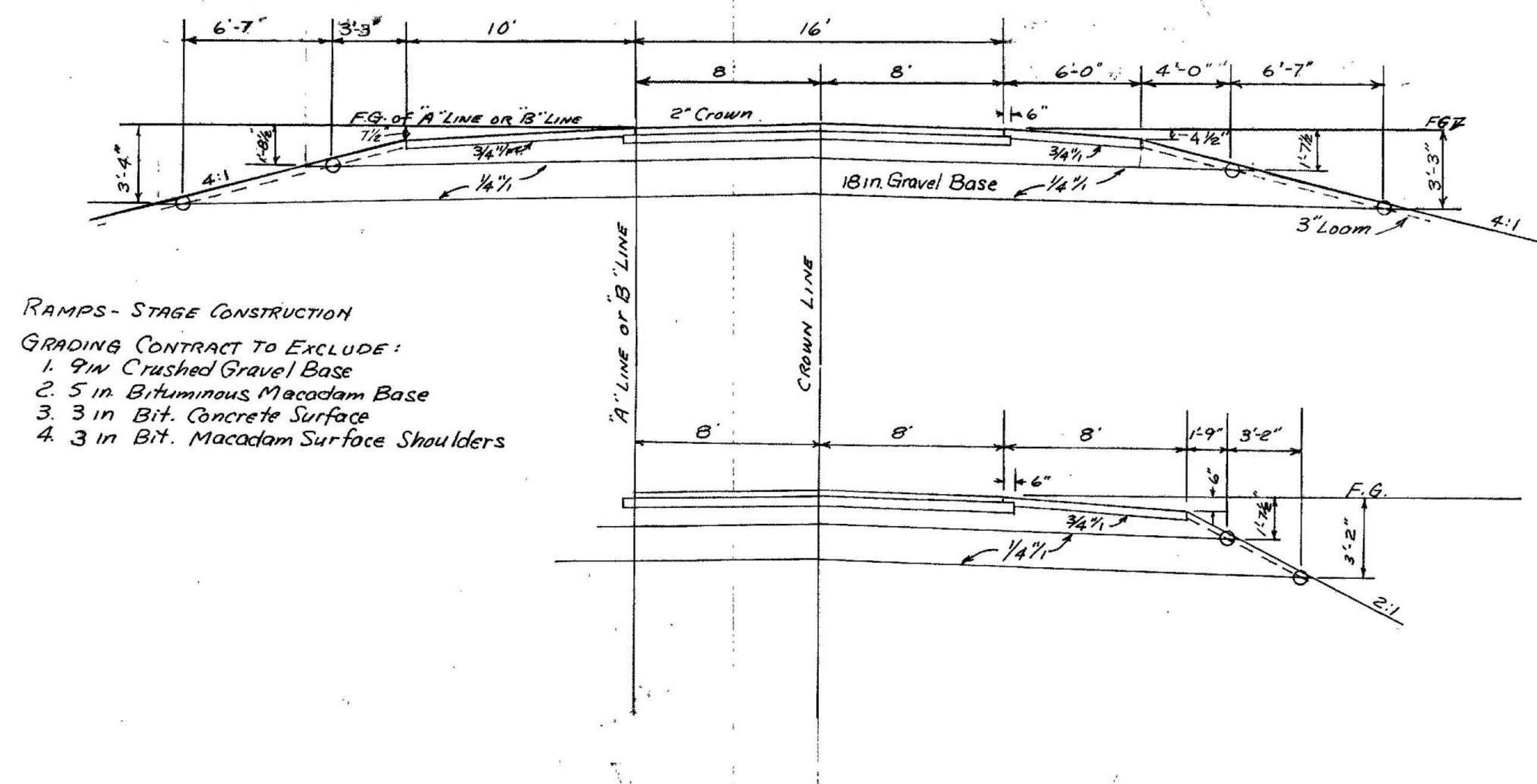
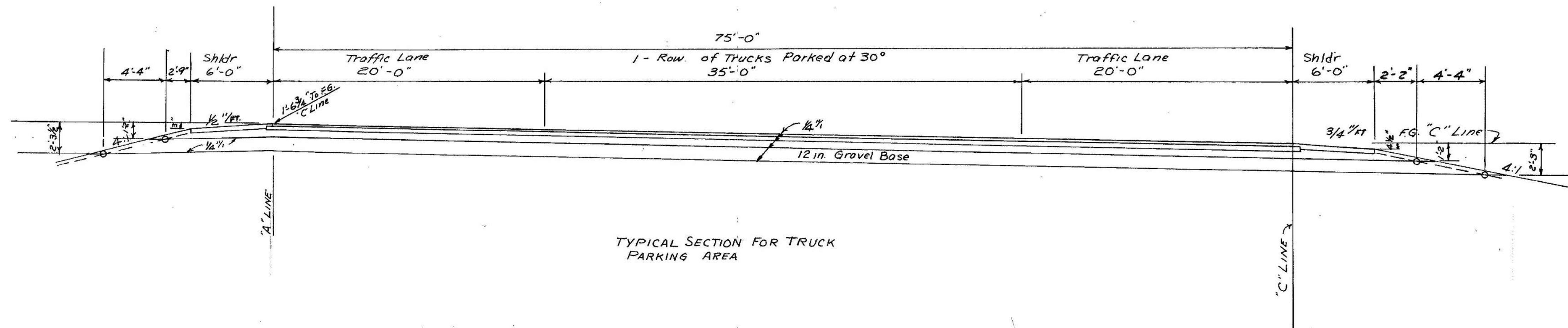
### APPROVED:

DIVISION ENGINEER DATE





PARKING AREAS - STAGE CONSTRUCTION  
 GRADING CONTRACT TO EXCLUDE:  
 1. 6 in. Crushed Gravel Base  
 2. 4 in. Bit. Macadam Base  
 3. 2 in. Bit. Concrete Surface  
 4. 3 in. Bit. Macadam Surface Shoulders  
 5. Granite Curb



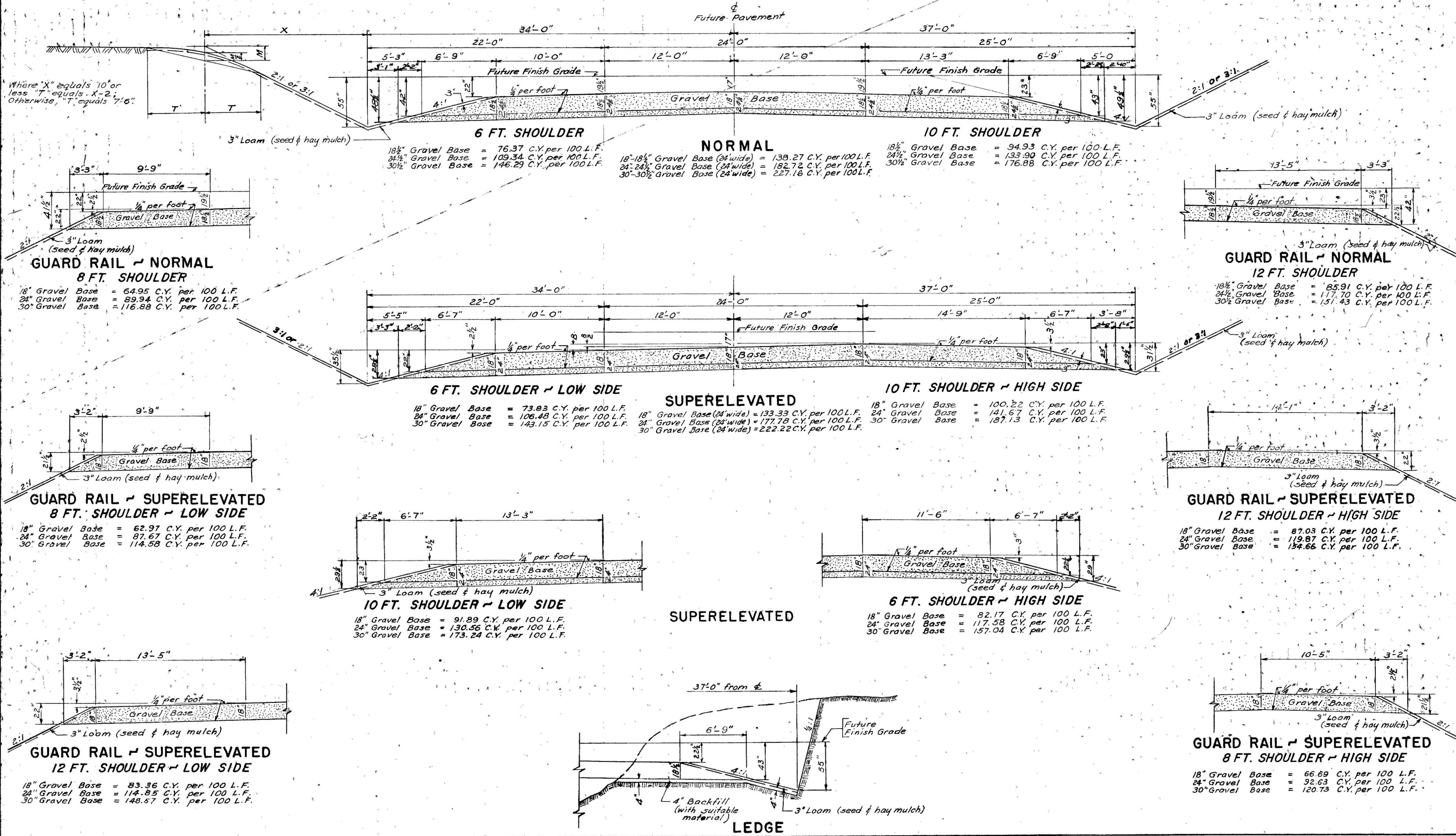
MAINE STATE HIGHWAY COMMISSION  
 AUGUSTA, MAINE

TYPICAL SECTIONS  
 SOUTHBOUND  
 REST AREA

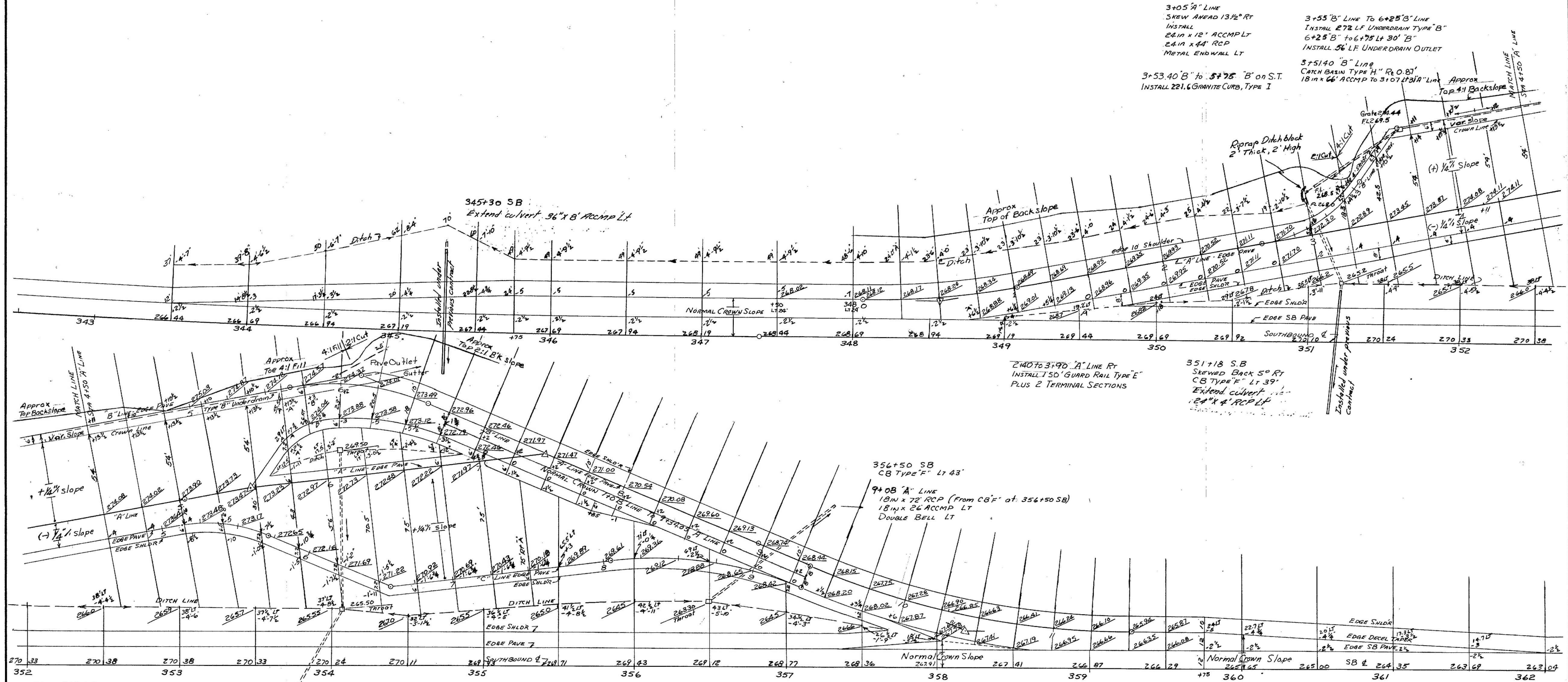


# STAGE CONSTRUCTION = GRADING AND GRAVEL BASE

B.P.R. REGION NO.	STATE	FEDERAL AID PROJECT NO.	SHEET NO.	TOTAL SHEETS
1	MAINE	I-95-6(6)	2	214







MAINE STATE HIGHWAY COMMISSION  
AUGUSTA, MAINE

**GRADING & DRAINAGE PLAN**  
**SOUTHBOUND**  
**REST AREA**

Scale 1 in = 30 ft



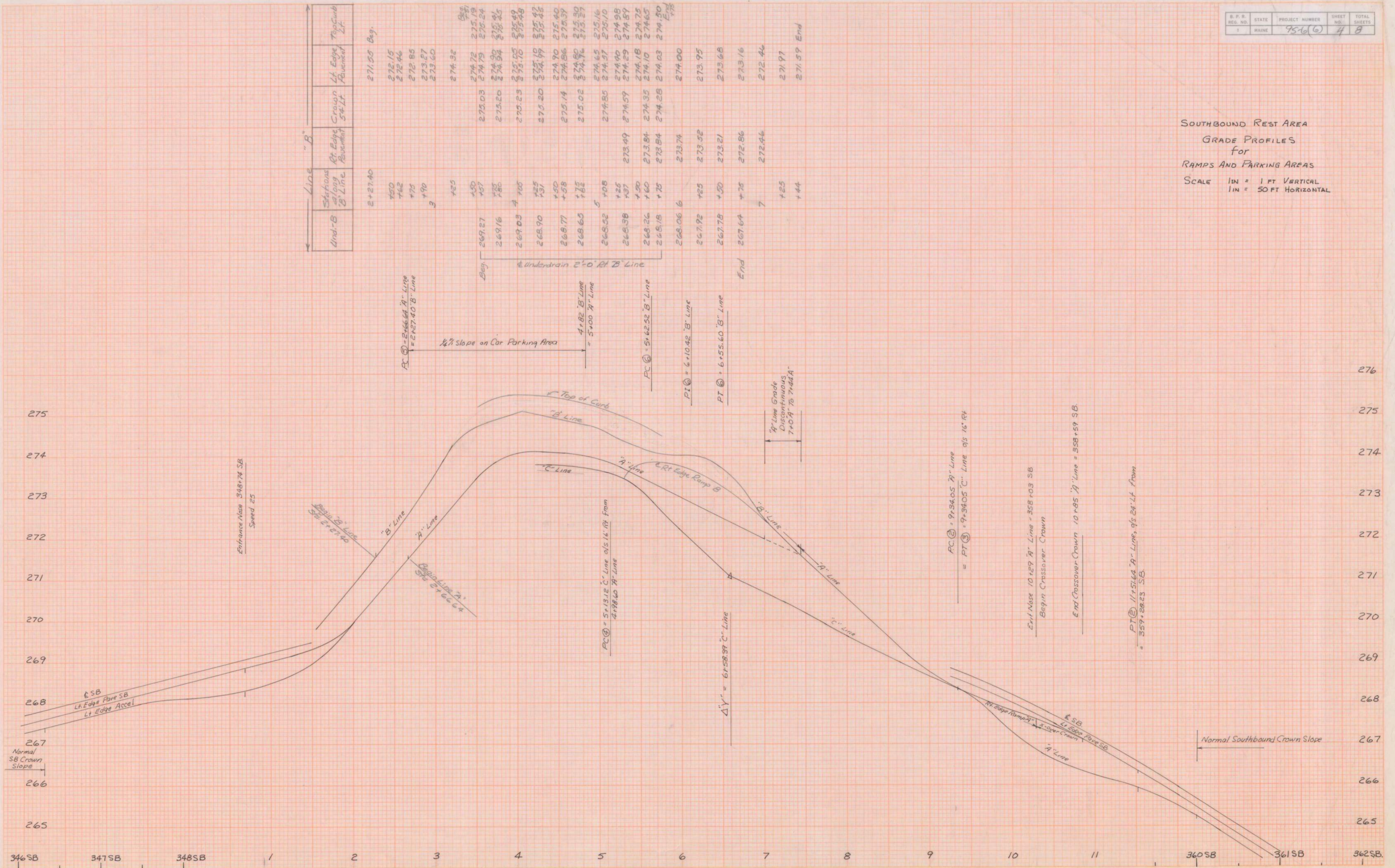




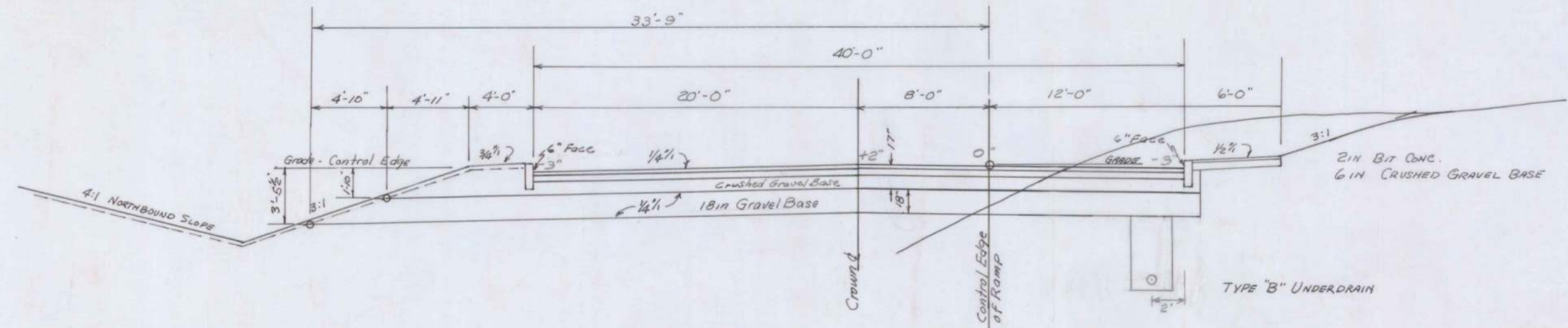




SOUTHBOUND REST AREA  
GRADE PROFILES  
for  
RAMPS AND PARKING AREAS  
SCALE 1" = 1 FT VERTICAL  
1" = 50 FT HORIZONTAL

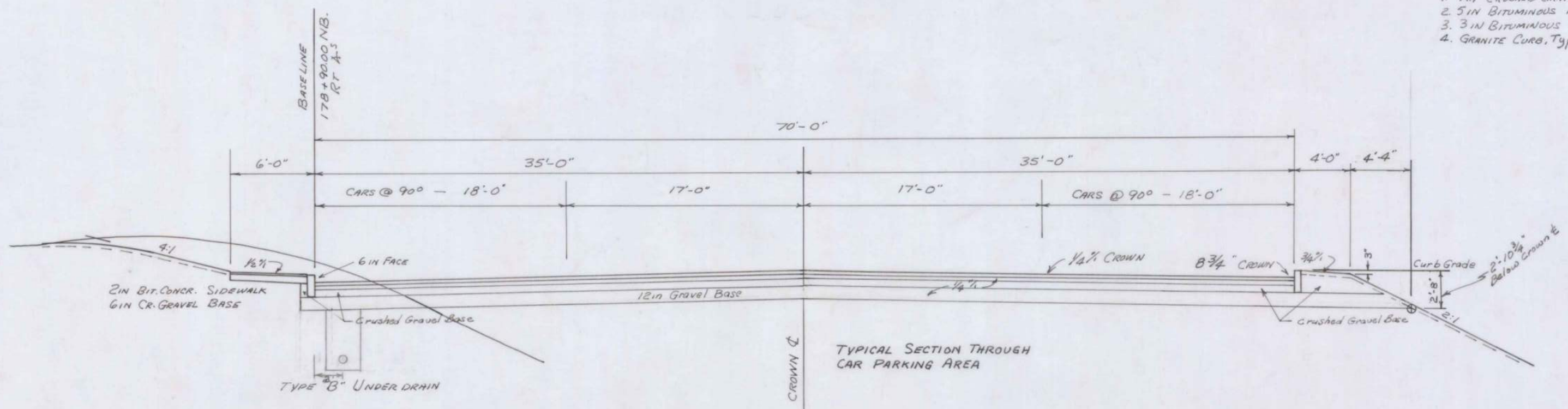






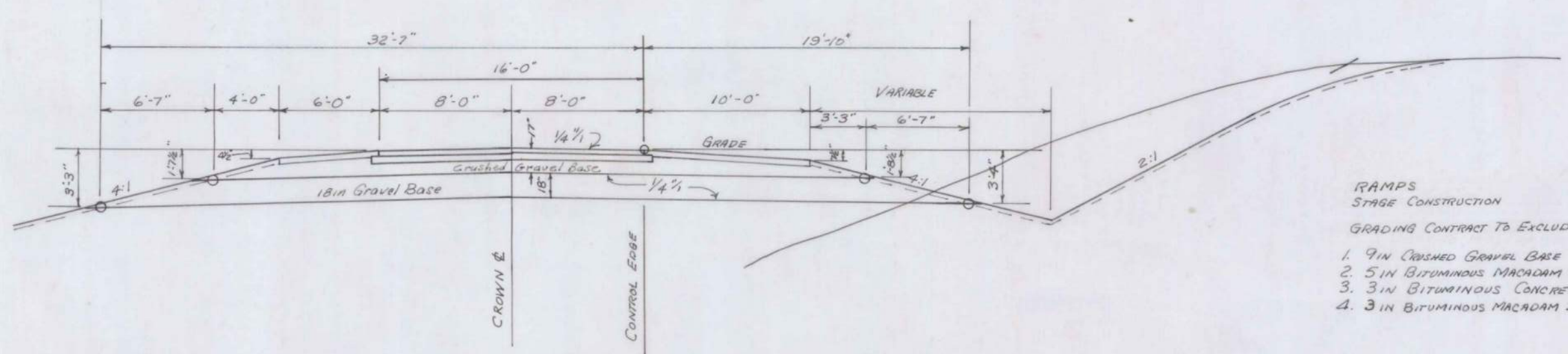
TYPICAL SECTION THROUGH  
TRUCK PARKING AREA

TRUCK AREA  
STAGE CONSTRUCTION  
GRADING CONTRACT TO EXCLUDE:  
1. 9 IN CRUSHED GRAVEL BASE  
2. 5 IN BITUMINOUS MACADAM BASE  
3. 3 IN BITUMINOUS CONCRETE PAVEMENT  
4. GRANITE CURB, Type I



TYPICAL SECTION THROUGH  
CAR PARKING AREA

CAR AREA  
STAGE CONSTRUCTION  
GRADING CONTRACT TO EXCLUDE:  
1. 2 IN BITUMINOUS CONCRETE PAVEMENT  
2. 4 IN BITUMINOUS MACADAM BASE COURSE  
3. 6 IN CRUSHED GRAVEL BASE  
4. GRANITE CURB, Type I



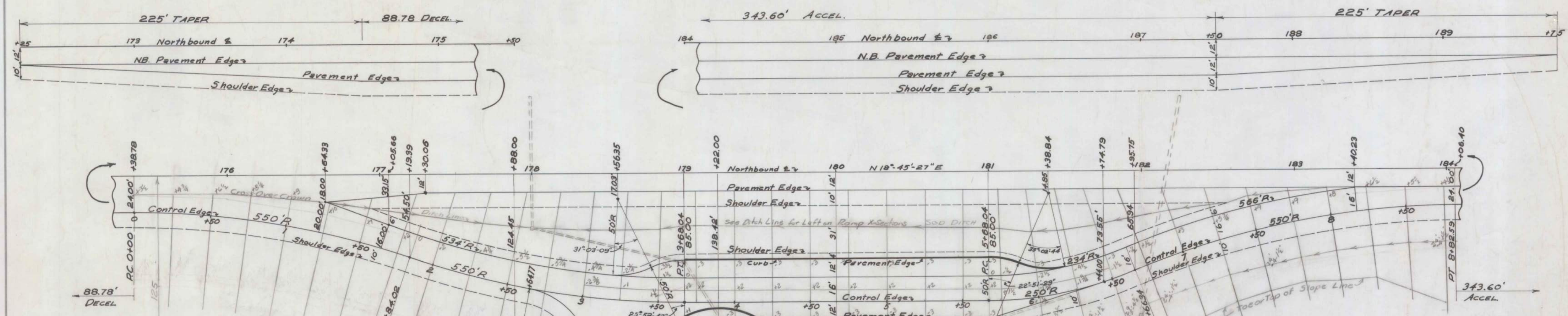
TYPICAL SECTION - RAMP

RAMPS  
STAGE CONSTRUCTION  
GRADING CONTRACT TO EXCLUDE:  
1. 9 IN CRUSHED GRAVEL BASE  
2. 5 IN BITUMINOUS MACADAM BASE  
3. 3 IN BITUMINOUS CONCRETE PAVEMENT  
4. 3 IN BITUMINOUS MACADAM SURF SHOULDER

MAINE STATE HIGHWAY COMMISSION  
AUGUSTA, MAINE

**TYPICAL SECTIONS**  
NORTHBOUND  
REST AREA





**DRAINAGE LIST**

Station	Description	Details
173+00 NB	Roadway Curb	24"x30" Accmp - 24"x56" RCP - 1 DB
178+00 NB	CB "F" 36" RT	Inlet 254.5 - Outlet 254.5 Throat 259.0
178+00 NB	Connecting Curb	18"x98" Accmp
3+68.04 Ramp	CB "H" 26" LT	Inlet 260.0 - Outlet 259.8 - Gate 267.75
3+68.04 Ramp	Connecting Curb	18"x60" RCP
4+00 Ramp	CB "F" 23" RT	Inlet 261.0 - Outlet 260.5 Throat 265.5
4+00 Ramp	Connecting Curb	18"x18" RCP
4+16	CB "H" 10" RT	Outlet 261.5 - Gate 263.71
4+30 to 6+25	UD "B"	Under Fwy Curb of Truck Parking
182+00 NB	CB "F" 96" RT	Outlet 264.0 - Throat 268.2
182+17 NB	Roadway Curb	24"x24" Accmp - 24"x120" RCP - 1 DB
None	UD "B"	Under Nty Curb of Car Parking - 98' long
CB "H" NWly	Corner Car Park	Outlet 262.0 - Gate 268.75 - Inlet 263.00
None	Connecting Curb	18"x64" RCP
CB "H" SWly	Corner Car Park	Inlet 261.5 - Outlet 261.0 - Gate 263.75
None	Outlet Curb	18"x40" Accmp - outlet 261.5 - 24"x60" RCP
173+49 NB	Extend exist. curb with 30"x6" Accmp RT - Remove & regrade metal E.W. RT.	

**CONTROL EDGE CURVE DATA**

CURVE #1 R=550'	CURVE #2 R=550'
PC 0+00.00	PC 1+84.02
PI 0+92.88	PI 2+76.90
PRC 1+84.02	PT 3+68.04
Δ 19°10'14" or 19.170555°	Δ SAME
D 10°25'03" or 10.417418°	"
L 184.02'	"
T 92.88'	"
Ex 7.79'	"
Def/130' 2°36'15.7" or Def/150' 2.604354°	Def/150' .05208708°
Def/11' 0°03'7.5" or Def/11' .05208708°	"
CHORD FOR 25' ARC = 25.00'	CHORD FOR 25' ARC = 24.99'
" " 50' " = 49.98'	" " 50' " = 49.92'

**CONTROL EDGE CURVE DATA**

CURVE #3 R=250'	CURVE #4 R=550'
PC 5+68.04	PC 6+66.34
PI 6+17.81	PI 7+75.84
PRC 6+66.34	PT 8+82.59
Δ 22°31'10" or 22.527778°	Δ SAME
D 22°55'06" or 22.918320°	D 10°25'03" or 10.417418°
L 98.30'	L 216.25'
T 49.77'	T 109.50'
Ex 4.91'	Ex 10.79'
Def 5°43'46" or 5.72958°	SAME AS CURVES #1 & #2
Def 0°06'325" or .1145916°	"
CHORD FOR 25' ARC = 24.99'	"
" " 50' " = 49.92'	"

INSTALL GUARD RAIL TYPE "E" - 250 LF - STATION 2+0 RT ALONG S'LY EDGE OF APPROACH APRON, TO PKG AREA  
 INSTALL GRANITE CURB TYPE I - 326 LF. AROUND EDGE OF CAR PARKING AREA, EXCEPT ENTRANCE - 198 LF. STA 3+70 LT TO 5+68 LT  
 - 128 LF. STA 4+20 RT TO 5+68 RT  
 INSTALL GRANITE CURB TYPE I - CIRCULAR - 50' RADIUS 110 LF. ALONG N'LY EDGE OF APRON TO STA 4+16 RT 50 LF. STA 5+68 TO 6+18 LT

Maine State Highway Commission  
 Augusta, Maine

# LAYOUT PLAN

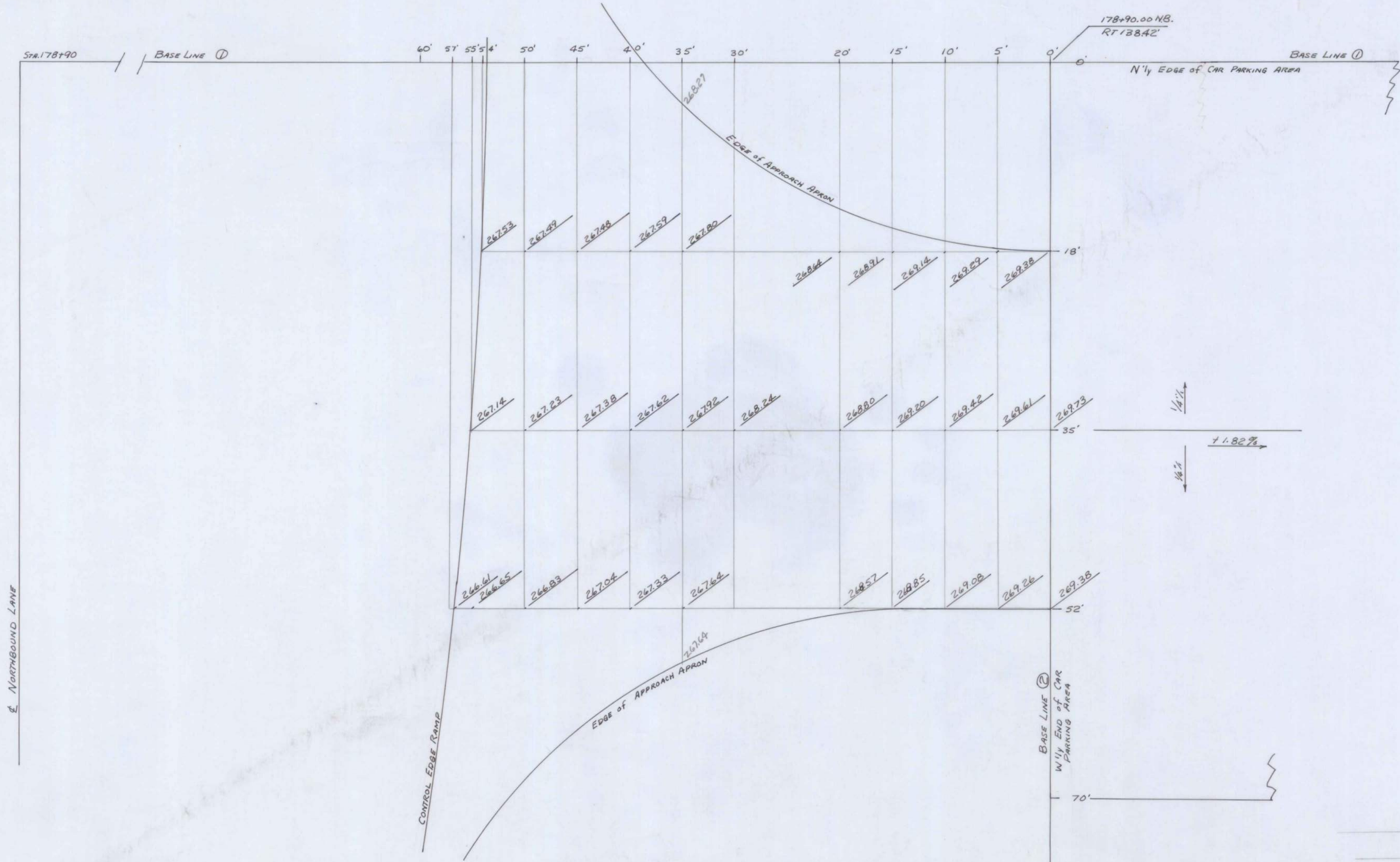
Northbound  
 Rest Area  
 Scale 1"=30'  
 May 15, 59

AUGUSTA



B. P. R. REG. NO.	STATE	PROJECT NUMBER	SHEET NO.	TOTAL SHEETS
1	MAINE	I-95-6(6)	1783	1783

7/8



SCALE 1" = 5 FT

MAINE STATE HIGHWAY COMMISSION AUGUSTA, MAINE
NORTHBOUND REST AREA
GRADING PLAN
APPROACH APRON TO CAR PARKING AREA

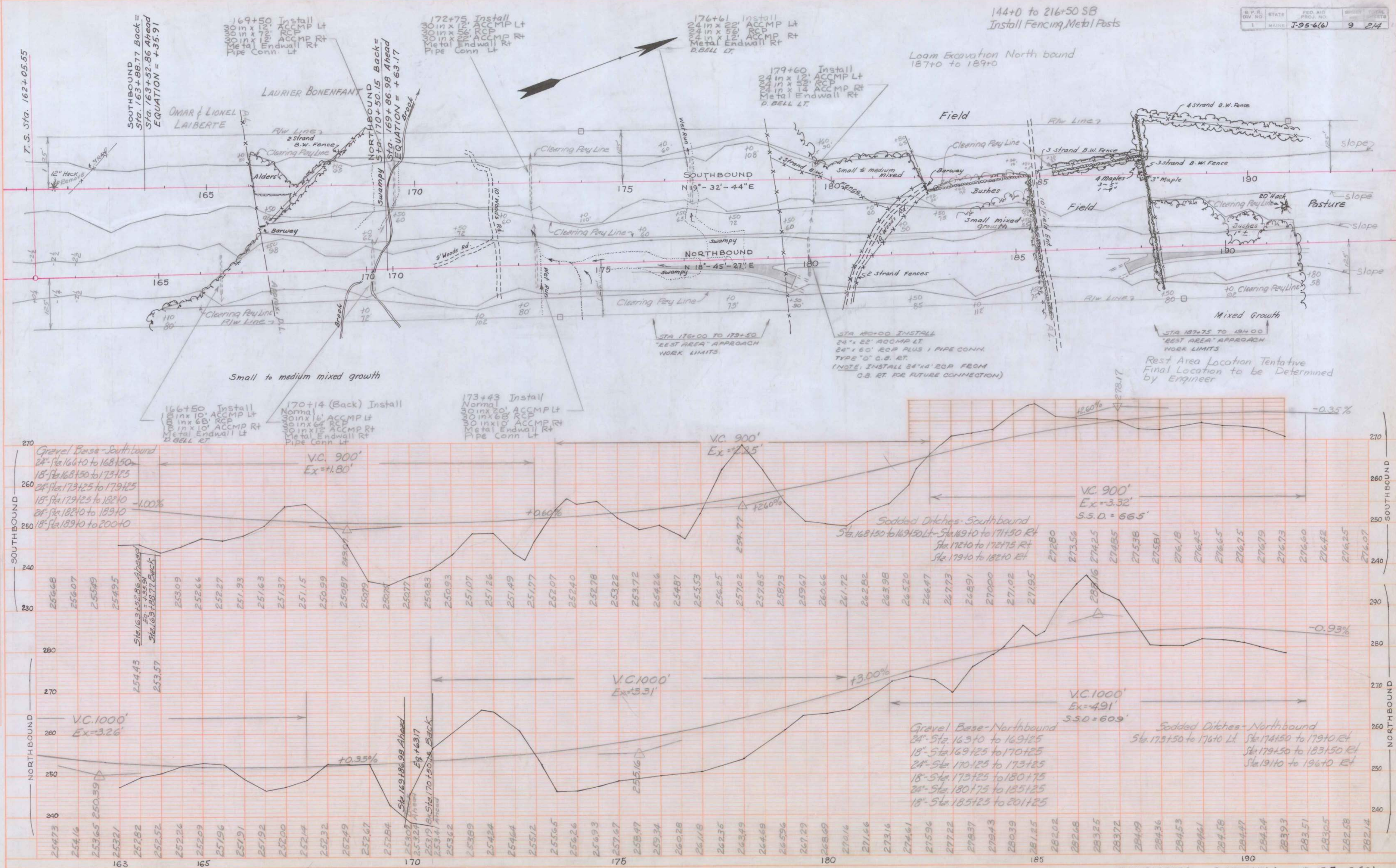












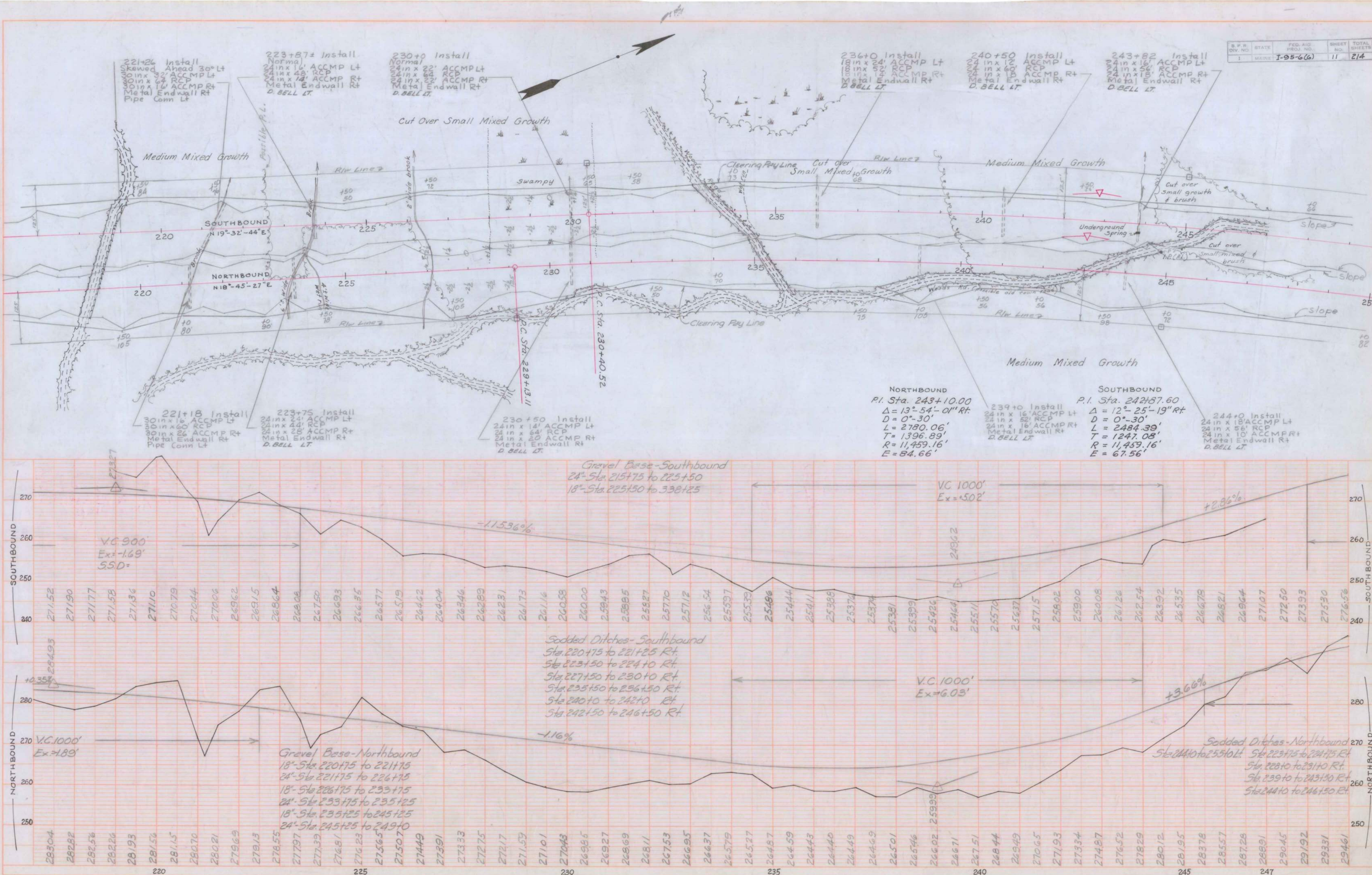


B.P.R. DIV. NO.	STATE	FED. AID PROJ. NO.	SHEET NO.	TOTAL SHEETS
1	MAINE	I-95-6(6)	10	214



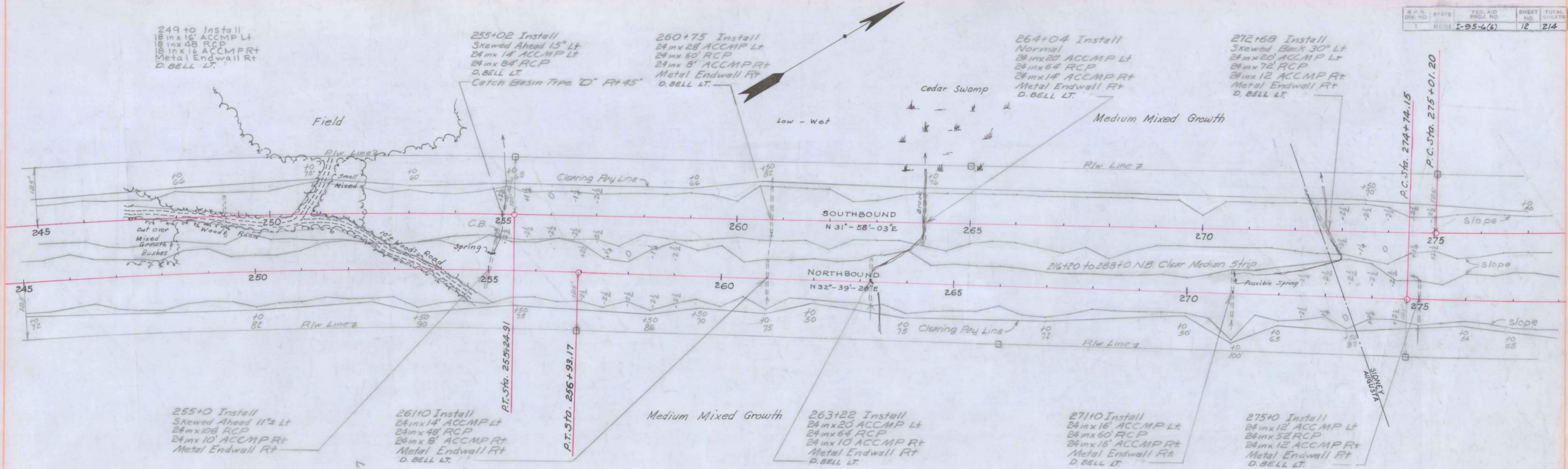
PLAN  
NOTES:  
1. ALL DIMENSIONS IN FEET UNLESS OTHERWISE NOTED.  
2. SEE SHEET I-95-6(5) FOR PREVIOUS WORK.

PROFILE  
NOTES:  
1. ELEVATIONS ARE IN FEET UNLESS OTHERWISE NOTED.  
2. SEE SHEET I-95-6(5) FOR PREVIOUS WORK.

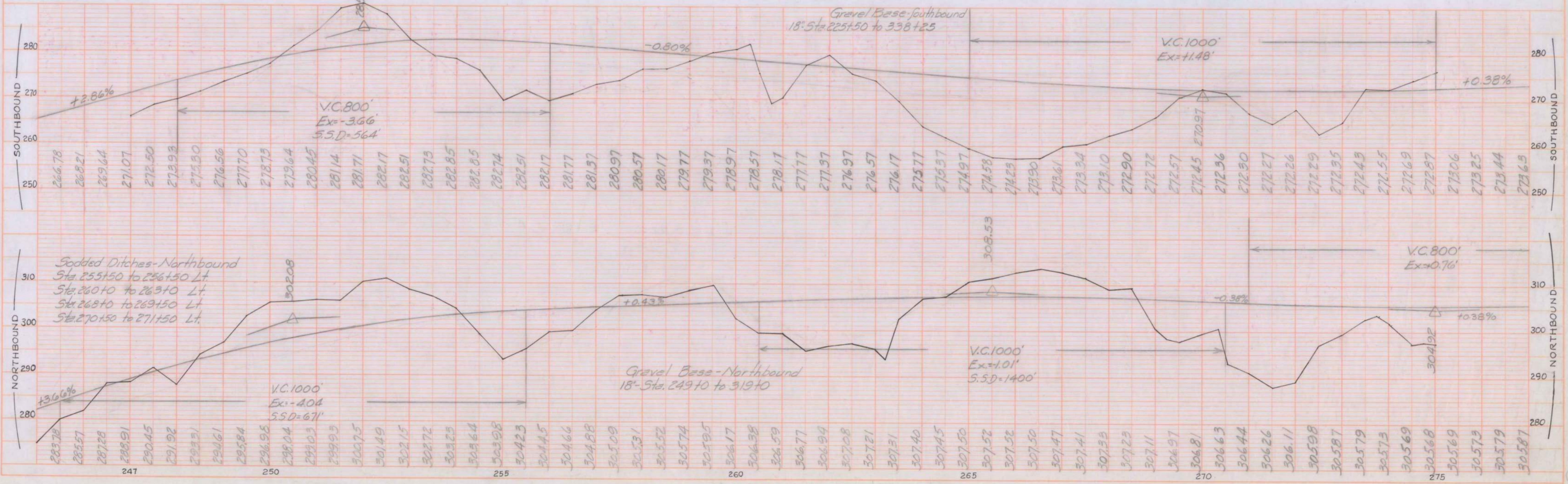




PLAN  
NOTES:  
1. ALL DIMENSIONS ARE IN FEET UNLESS OTHERWISE NOTED.  
2. ALL ELEVATIONS ARE IN FEET UNLESS OTHERWISE NOTED.  
3. ALL DISTANCES ARE IN FEET UNLESS OTHERWISE NOTED.



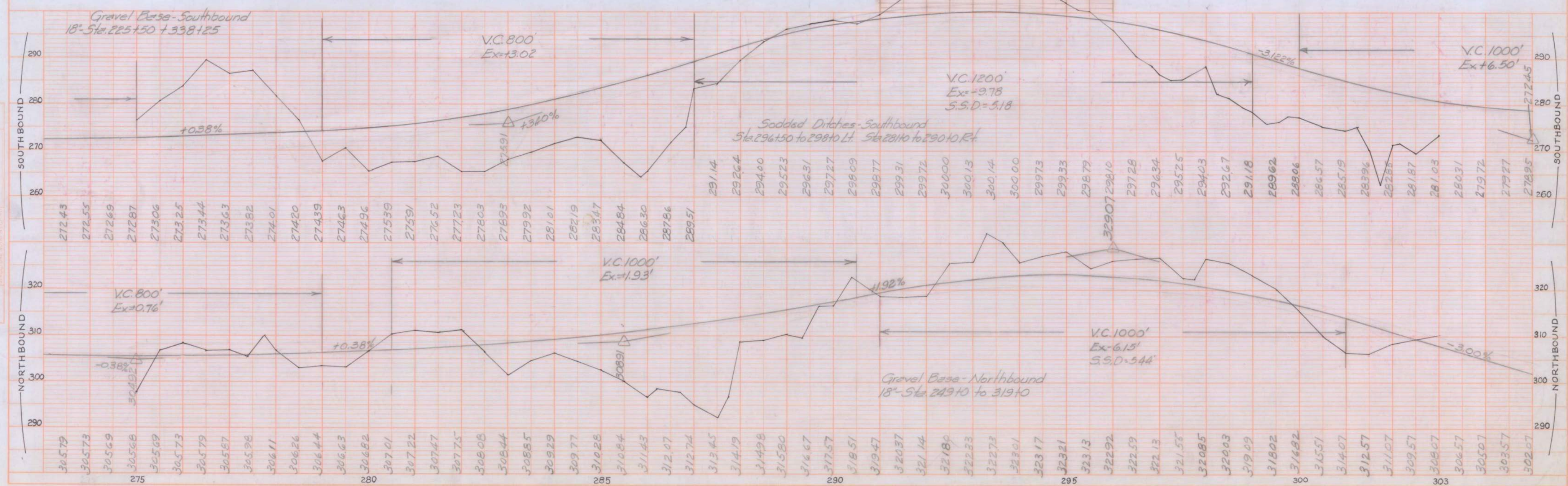
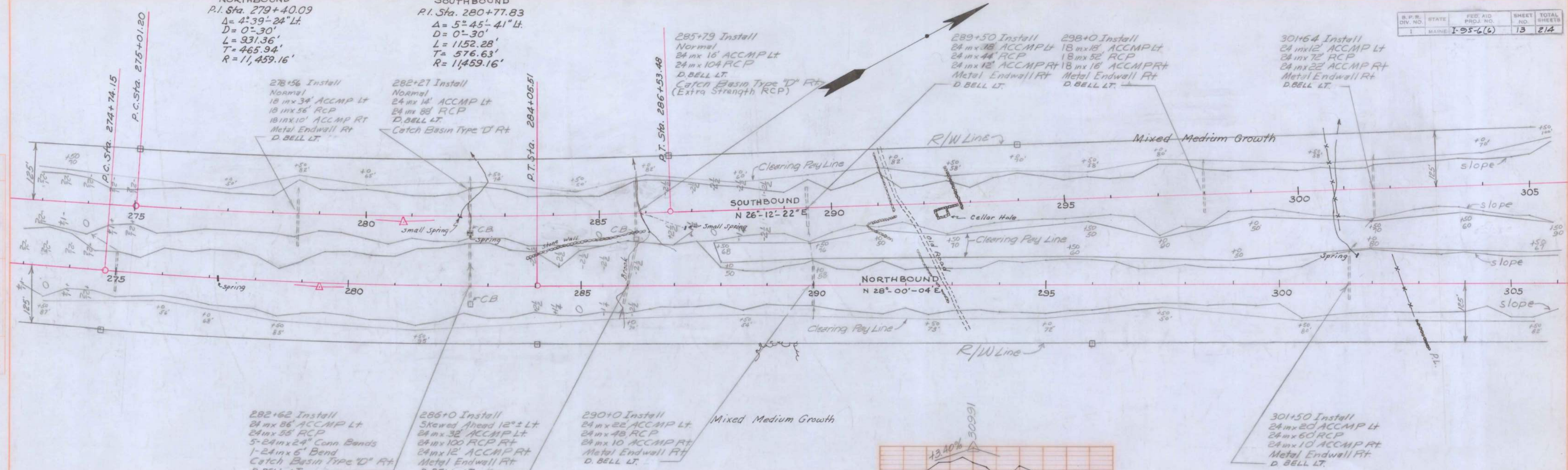
PROFILE  
NOTES:  
1. ALL DIMENSIONS ARE IN FEET UNLESS OTHERWISE NOTED.  
2. ALL ELEVATIONS ARE IN FEET UNLESS OTHERWISE NOTED.  
3. ALL DISTANCES ARE IN FEET UNLESS OTHERWISE NOTED.



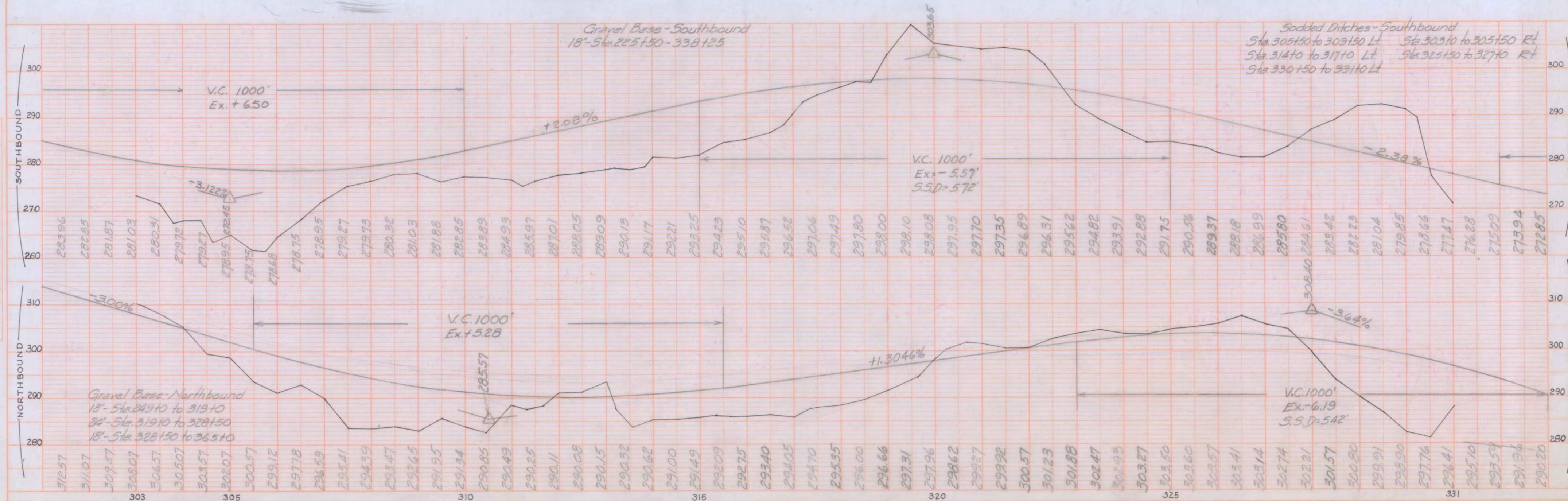
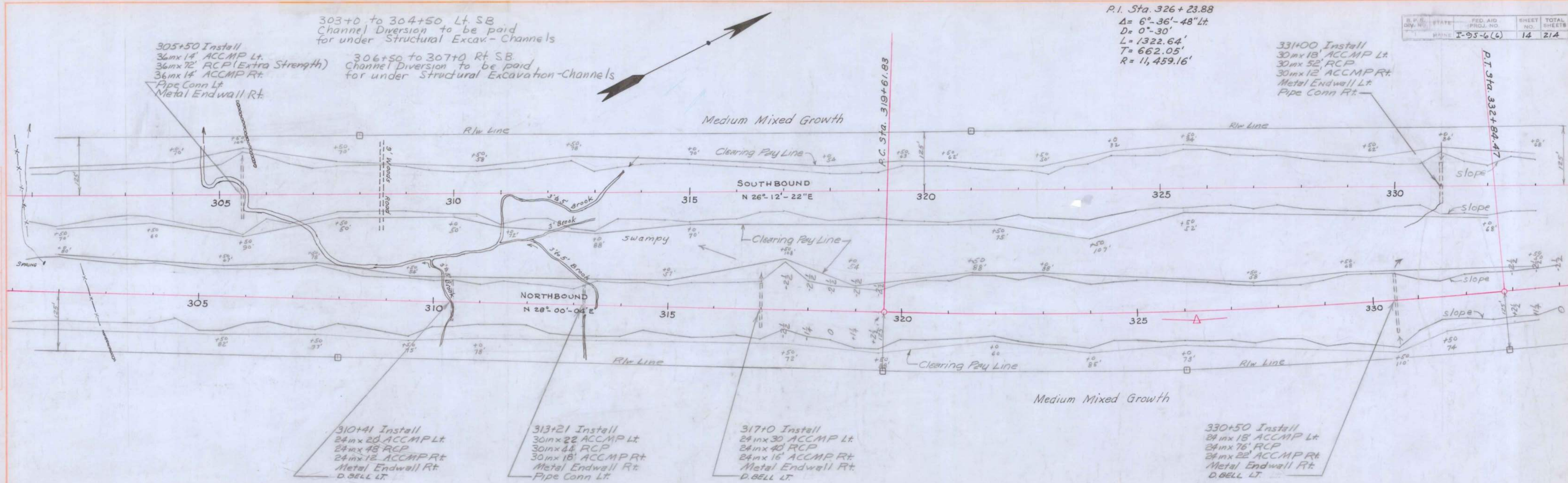


**NORTHBOUND**  
P.I. Sta. 279+40.09  
 $\Delta = 4^{\circ}39'24''$  Lt.  
 $D = 0^{\circ}30'$   
 $L = 931.36'$   
 $T = 465.94'$   
 $R = 11,459.16'$

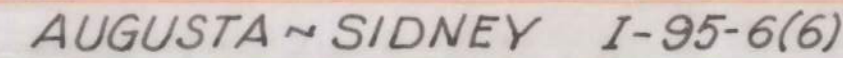
**SOUTHBOUND**  
P.I. Sta. 280+77.83  
 $\Delta = 5^{\circ}45'41''$  Lt.  
 $D = 0^{\circ}30'$   
 $L = 1152.28'$   
 $T = 576.63'$   
 $R = 11,459.16'$













364+30 Install  
Skewed Back 15° Lt  
24" x 14" ACCMP Lt  
24" x 60" RCP  
24" x 22" ACCMP Rt  
Metal Endwall Rt  
D. BELL LT

380+0 Install  
42" x 10" ACCMP Lt  
42" x 48" RCP  
42" x 14" ACCMP Rt  
Metal Endwall Lt  
Pipe Conn Rt

375+0 TO 387+0 Install Fencing - Metal Posts

