

STATE OF MAINE

STATE HIGHWAY COMMISSION

PLANS

SIDNEY

KENNEBEC COUNTY

MAINE FEDERAL AID INTERSTATE

PROJECT NO. I-95-6(7) III

TOTAL LENGTH 2.443 MILES

SCALES { PLAN 1 IN. = 100 FT.
 PROFILE { HOR. 1 IN. = 100 FT.
 VER. 1 IN. = 10 FT.
 CROSS SECTIONS 1 IN. = 10 FT.

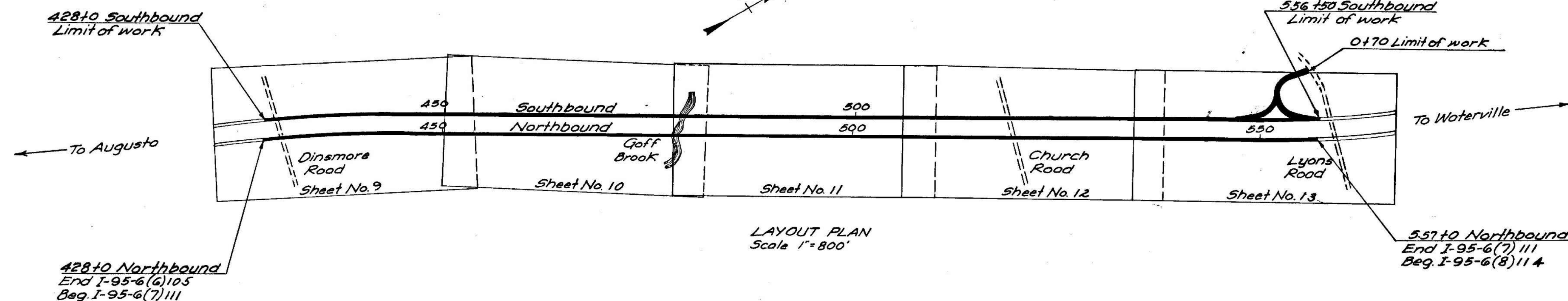
CONVENTIONAL SIGNS

STATE OR NATIONAL LINE	-----	SURVEY LINE	-----
COUNTY LINE	-----	CULVERT	-----
TOWN LINE	-----	DROP INLET	-----
UNFENCED PROPERTY	-----	TROLLEY POLE	-----
FENCE	-----	POWER POLE	-----
RIGHT OF WAY LINE	-----	TEL. POLE	-----
TRAVELED WAY	-----	MARSH	-----
RAILROAD	-----	TREES	-----
RETAINING WALL	-----	STONE WALL	-----

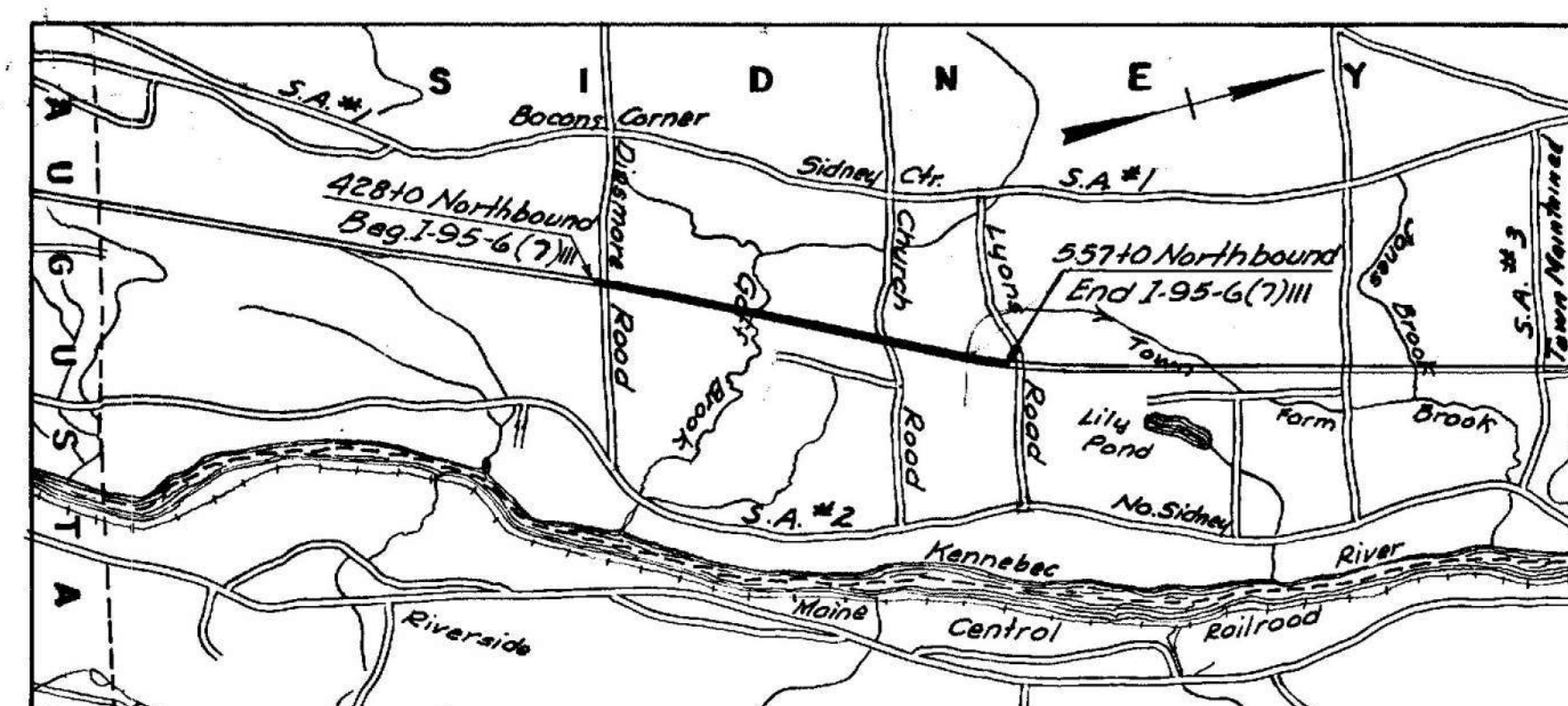
INDEX OF SHEETS

SHEET NO. 1	TITLE PAGE	STA. 428+00 TO 557+00
SHEET NO. 2	TYPICAL SECTIONS	
SHEET NO. 3	QUANTITIES	
SHEET NO. 4 THRU 6	STANDARD DETAILS	
SHEET NO. 9	PLAN AND PROFILE	STA. 428+00 TO 557+00
SHEET NO. 15	CROSS-SECTIONS	STA. 428+00 TO 557+00
SHEET NO. 7	BRIDGES - BOX CULVERT	STA. 478+78 N.B. - 479+45 S.B.
SHEET NO.	SPECIAL DETAILS	

Assume 748 to Br MAINT.



A.D.T. (1960) 7260
 A.D.T. (1980) 9900
 D.H.V. 1485
 D. 65%
 T. 15%
 V. 60



NOTE: - All work contemplated under this contract to be governed by and in conformity with the Specifications adopted January 1956 except as modified on these plans and in the special provisions.

APPROVED:
 MAINE STATE HIGHWAY COMMISSION

David W. Stearns
 CHAIRMAN
George H. Thibault
W. L. Williams
 CHIEF ENGINEER

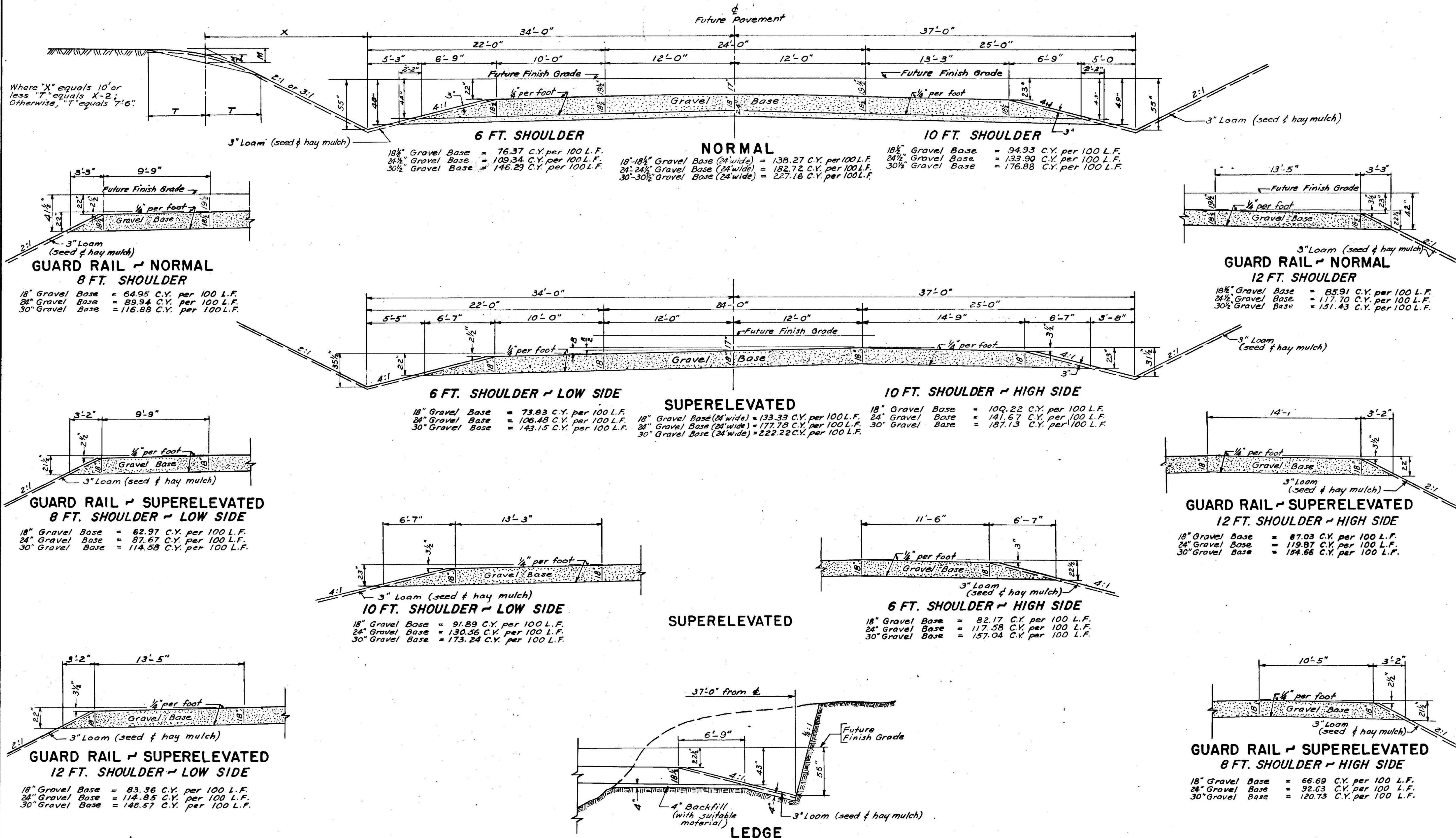
DEPARTMENT OF COMMERCE
 BUREAU OF PUBLIC ROADS
 REGION 1

APPROVED:

DIVISION ENGINEER DATE

STAGE CONSTRUCTION = GRADING AND GRAVEL BASE

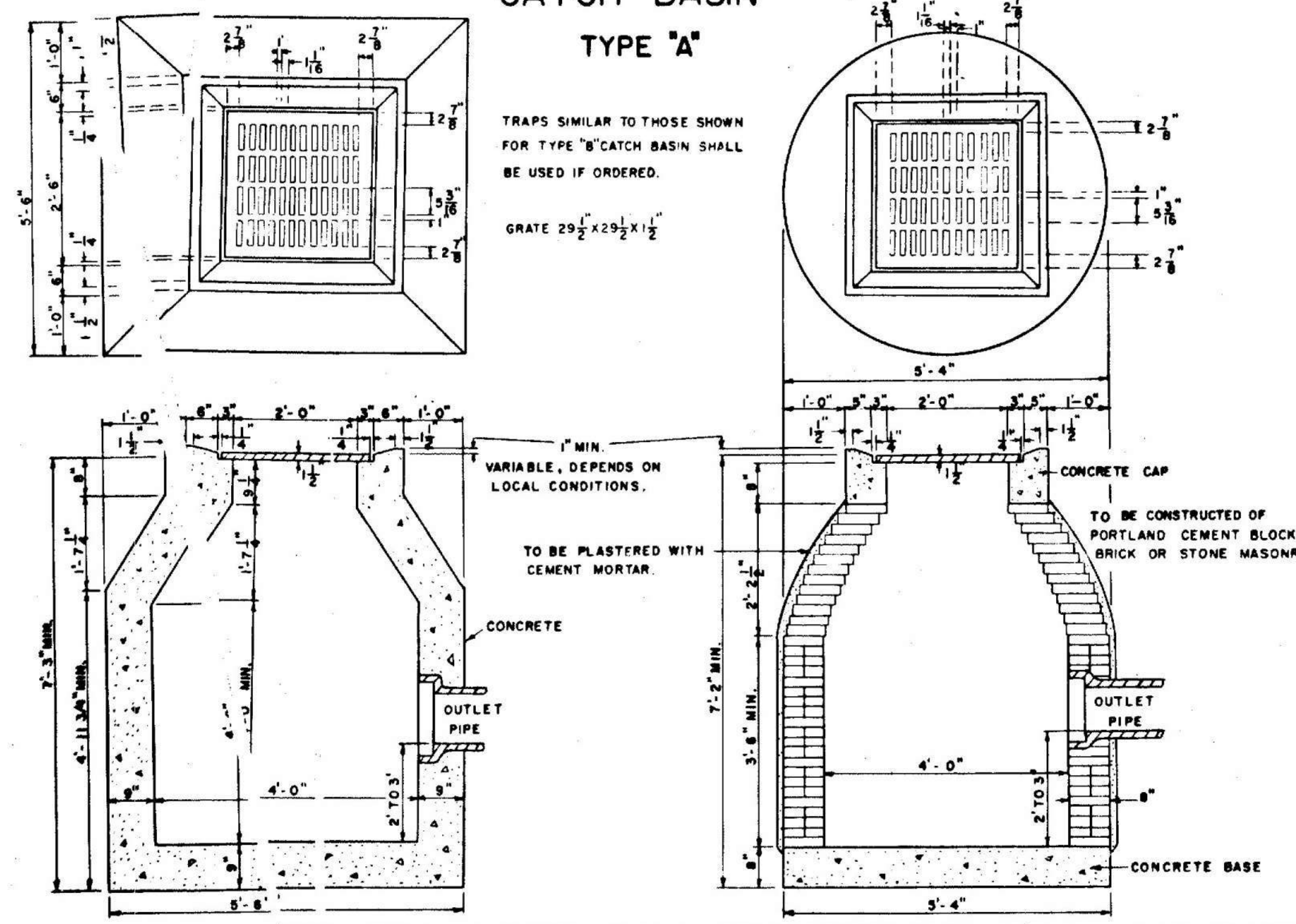
B. P. R. REGION NO.	STATE	FEDERAL AID PROJECT NO.	SHEET NO.	TOTAL SHEETS
1	MAINE	1-95-6(7)111	2	108



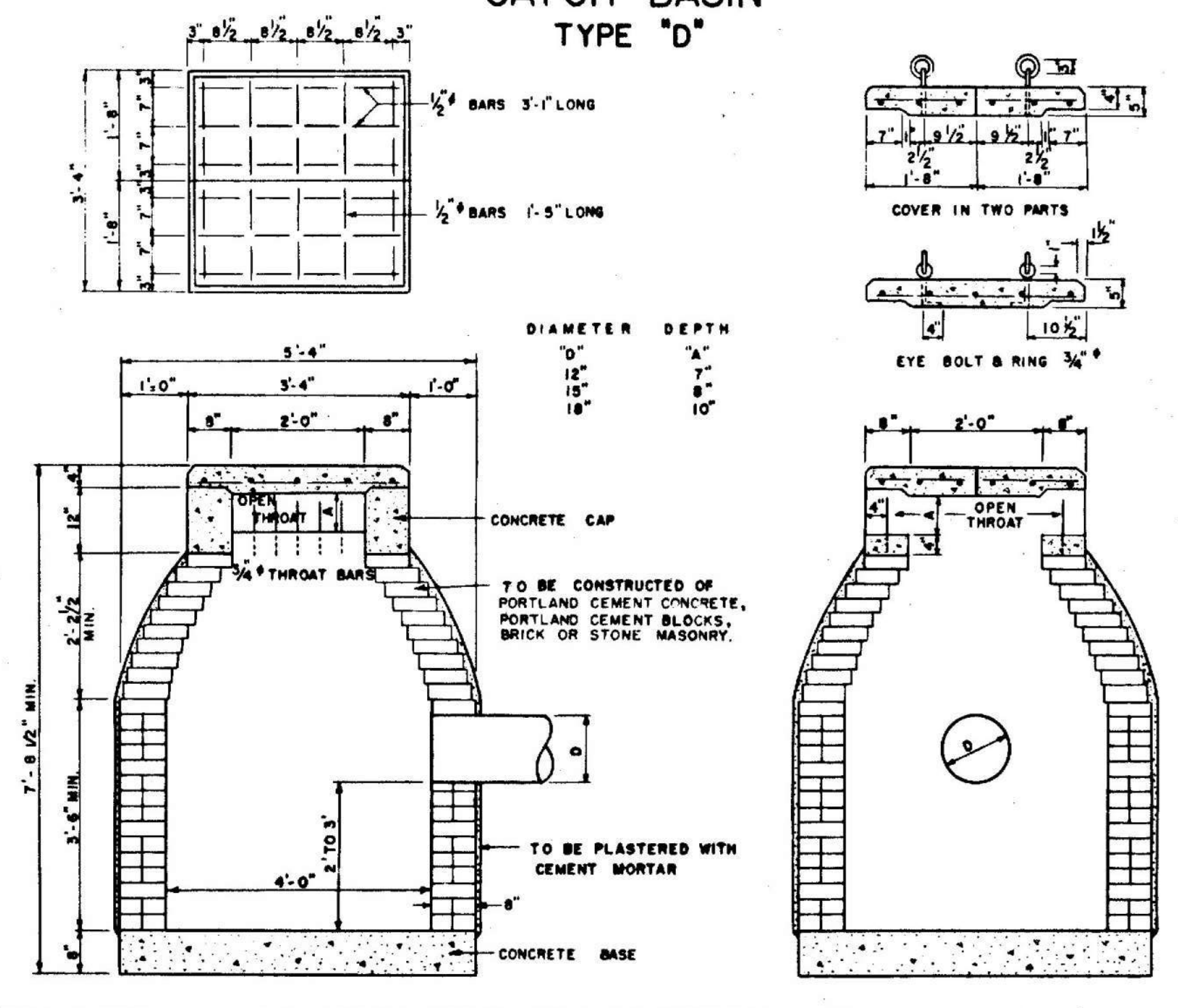
DRAINAGE																							
STATION	A.C.C.M.P.		R.C.P.		A.C.C.M.P.		A.C.C.M.P.		C.M.P.		CATCH BASINS				DROP INLETS	MAN-HOLES	UNDERDRAINS				REMARKS		
	LEFT EXTENSION				RIGHT EXTENSION												TYPE		TYPE C				
	SIZE	LENGTH	SIZE	LENGTH	SIZE	LENGTH	SIZE	LENGTH	SIZE	LENGTH	A	B	C	D			E	A	B	A		B	SIZE
Northbound																							
439+54	30"	14'	30"	50'	30"	14'																	Plus Pipe Connector - 1 Metal E.W.
442+0	24"	20'	24"	60'	24"	20'																	" " " -1 " " "
464+80	24"	20'	24"	60'	24"	22'																	" " " -1 " " "
468+82	24"	10'	24"	54'	24"	10'																	" " " -1 " " "
494+55	30"	24'	30"	52'	30"	24'																	" " " -1 " " "
500+50	24"	20'	24"	52'	24"	16'																	" " " -1 " " "
508+0	24"	26'	24"	52'	24"	28'																	" " " -1 " " "
516+0	24"	14'	24"	56'	24"	12'																	" " " -1 " " "
530+48	24"	16'	24"	52'	24"	18'																	" " " -1 " " "
539+0	24"	8'	24"	50'	24"	12'																	" " " -1 " " "
551+18	24"	10'	24"	52'	24"	12'																	" " " -1 " " "
555+0	24"	12'	24"	56'	24"	18'																	" " " -1 " " "
Southbound																							
431+50	24"	12'	24"	56'	24"	10'																	Plus Pipe Connector - 1 Metal E.W.
438+50	24"	20'	24"	52'	24"	28'																	" " " -1 " " "
443+50	24"	10'	24"	56'	24"	10'																	" " " -1 " " "
459+0	24"	14'	24"	58'	24"	14'																	" " " -1 " " "
471+0	24"	10'	24"	48'	24"	10'																	" " " -1 " " "
490+50	24"	20'	24"	62'	24"	18'																	" " " -1 " " "
494+50	30"	8'	30"	60'	30"	10'																	" " " -1 " " "
497+0	24"	16'	24"	60'	24"	16'																	" " " -1 " " "
501+50	24"	14'	24"	52'	24"	16'																	" " " -1 " " "
507+0	24"	12'	24"	56'	24"	8'																	" " " -1 " " "
515+50	24"	10'	24"	64'	24"	8'																	" " " -1 " " "
523+0	24"	10'	24"	54'	24"	8'																	" " " -1 " " "
530+50	24"	20'	24"	52'	24"	20'																	" " " -1 " " "
538+50	24"	14'	24"	50'	24"	12'																	" " " -1 " " "
551+40	24"	10'	24"	56'	24"	16'																	" " " -1 " " "
555+50	24"	10'	24"	68'	24"	20'																	" " " -1 " " "
Undetermined Location																							
5000																							

ESTIMATED QUANTITIES			
ITEM NO	DESCRIPTION	QUANTITY	UNIT
201-5	Clearing	49	Acres
203-9	Earth Excavation	67,000	Cu. Yds.
203-10	Rock Excavation	8,500	Cu. Yds.
204-10	Structural Earth Excavation - Drainage	5,800	Cu. Yds.
	Structural Rock Excavation - Drainage	250	Cu. Yds.
204-16	Structural Earth Excavation - Channel	800	Cu. Yds.
205-8	Common Borrow	115,000	Cu. Yds.
205-9	Granular Borrow	73,000	Cu. Yds.
302-7	Gravel Base Course (In Place Measurement)	83,000	Cu. Yds.
	Gravel for Foundations	1,500	Cu. Yds.
302-13	Washing Gravel Base Course (In Place Measurement)	83,000	Cu. Yds.
308-5	Overhaul (In Place Measure)	166,000	Yd. Mi.
309-5	Stripping Pits	5,000	Cu. Yds.
310-6	Sprinkling	100	Units
311-6	Calcium Chloride	30	Tons
601-11	12" Corrugated Metal Pipe	150	Lin. Ft.
602-14	24" Asphalt Coated Corr. Metal Pipe	900	Lin. Ft.
602-15	30"	150	Lin. Ft.
603-13	24" Reinforced Concrete Pipe	1600	Lin. Ft.
603-14	30"	232	Lin. Ft.
606-10	Underdrain, Type "B"	5000	Lin. Ft.
606-16	Underdrain Outlets	500	Lin. Ft.
607-7	Metal End Walls For 24" Pipe	26	Each
607-8	Metal End Walls For 30" Pipe	4	Each
701-47	Portland Cement	1,035	Bbls.
701-50	Portland Cement Concrete, Reinforced Box Culvert	690	Cu. Yds.
705-13	Reinforcing Steel, Delivered	101,700	Lbs.
705-14	Reinforcing Steel, Placing	101,700	Lbs.
806-5	Cut Slope Drains	1,000	Lin. Ft.
906-18	Fencing - Metal Post (Galvanized)	27,000	Lin. Ft.
907-10	Hand Laid Rip-rap	150	Cu. Yds.
908-8	Loom Excavation	11,000	Cu. Yds.
908-9	Loom Borrow	1,500	Cu. Yds.
909-7	Sodding	7,000	Sq. Yds.
910-9	Seeding - Roadside Mixture	1,255	Units
912-6	Hay Mulch	145	Tons
914-6	Project Markers	4	Each
915-6	Right of Way Monuments	26	Each
916-6	Underdrain Outlet Markers	14	Each
929-10	Portable Barricades	5	Each
202-5	Removing Trees (9"-12")	4	Each
202-6	Removing Trees (over 24")	4	Each

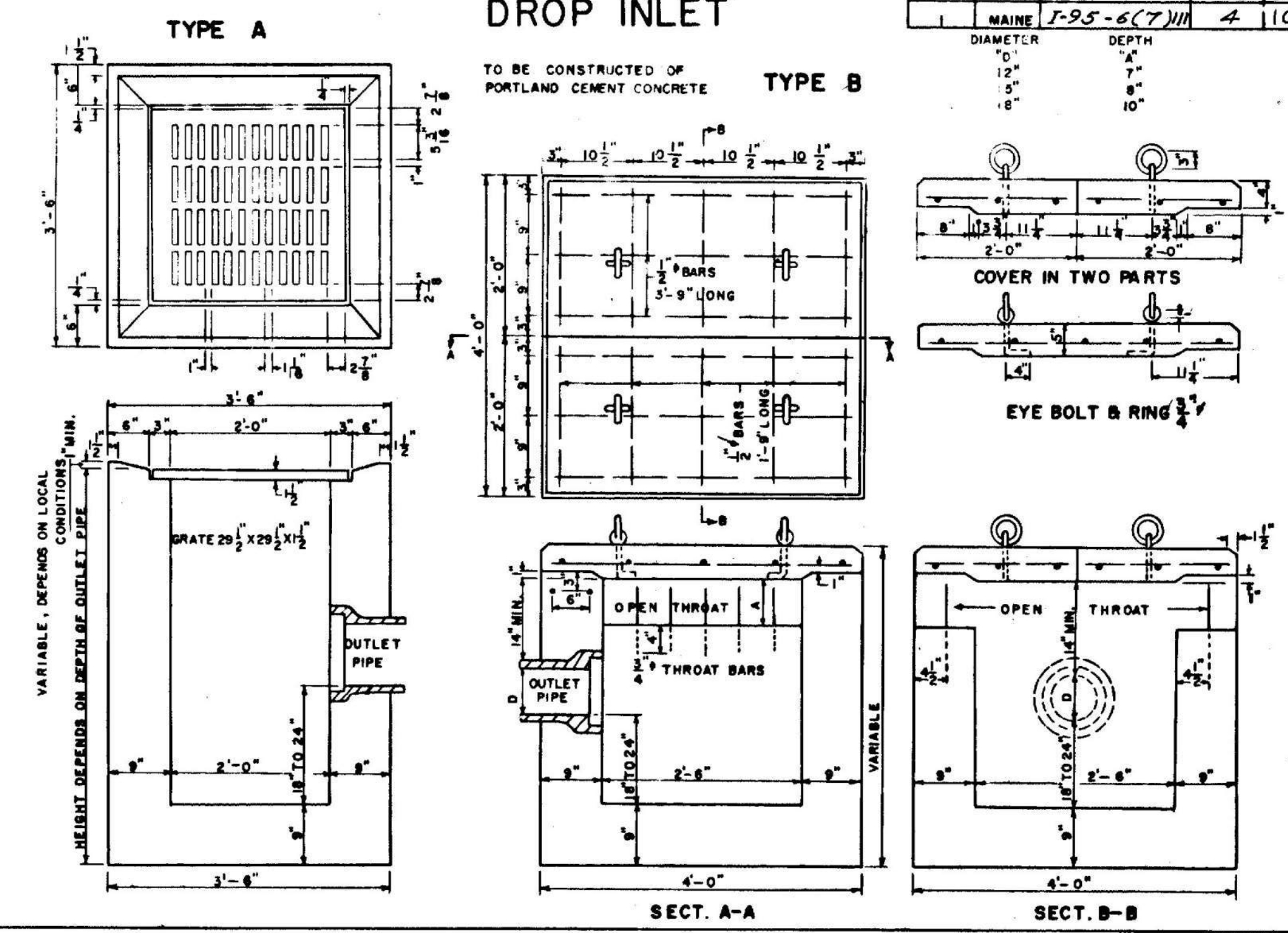
CATCH BASIN TYPE "A"



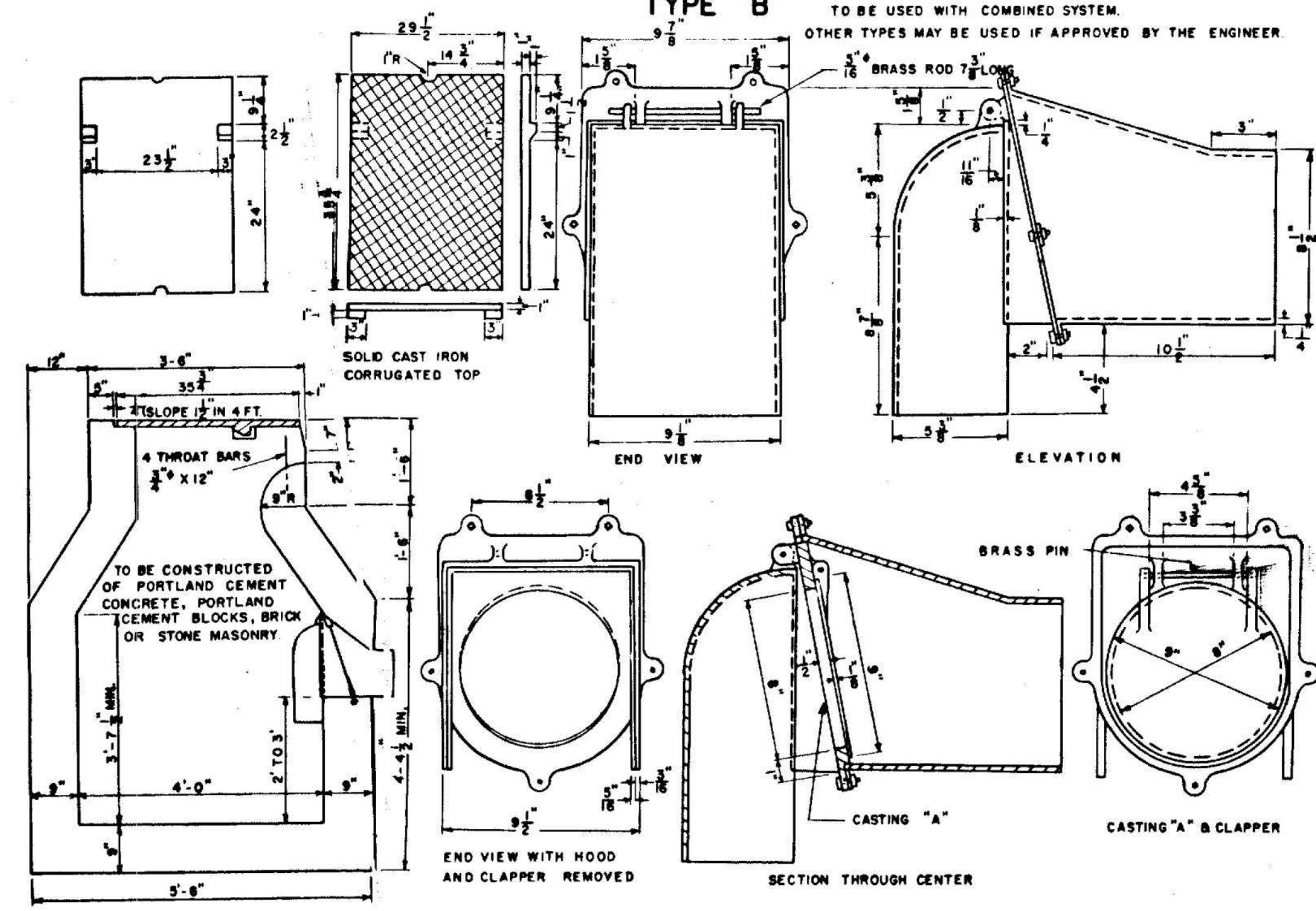
CATCH BASIN TYPE "D"



DROP INLET

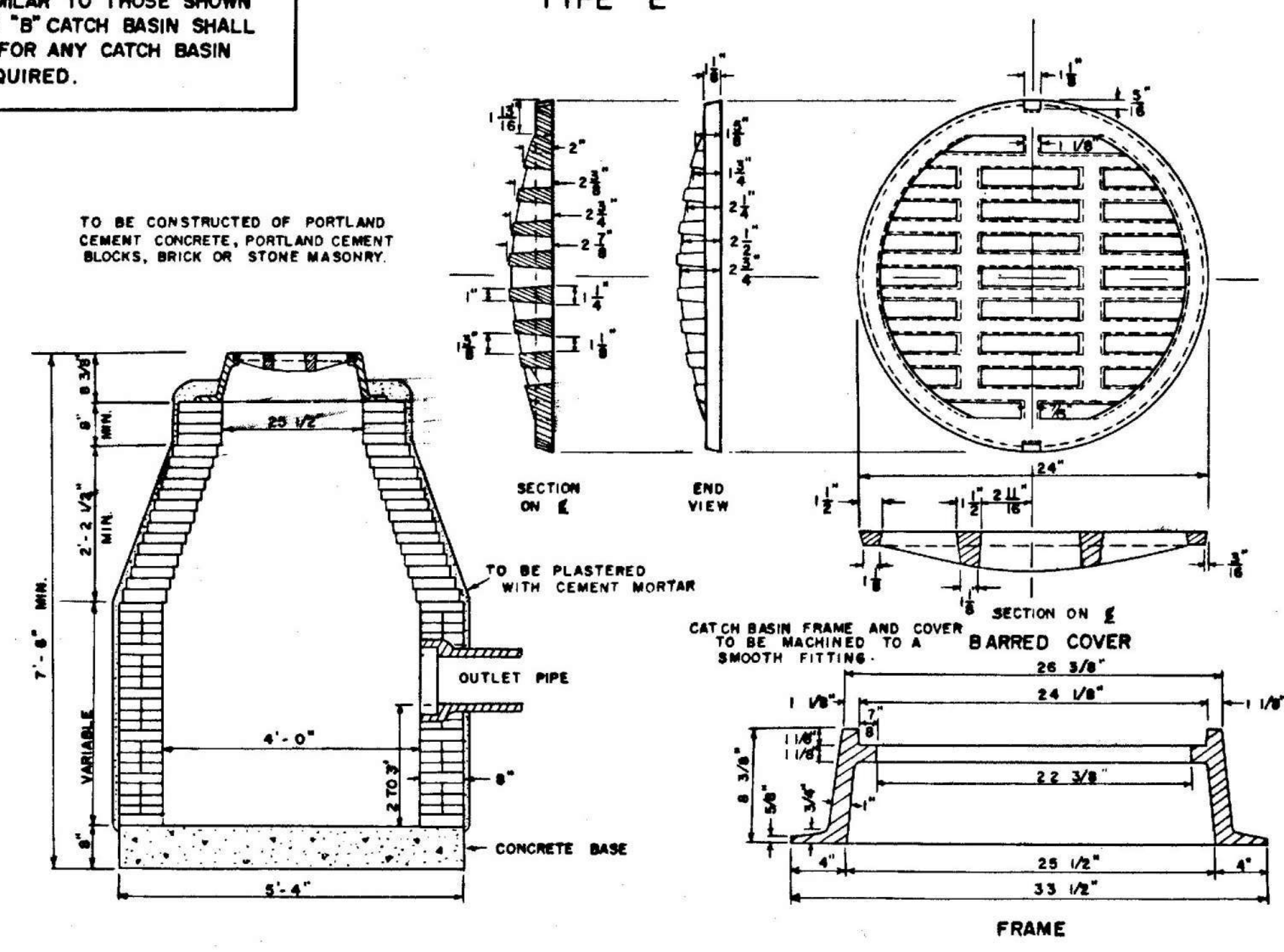


CATCH BASIN TYPE "B"

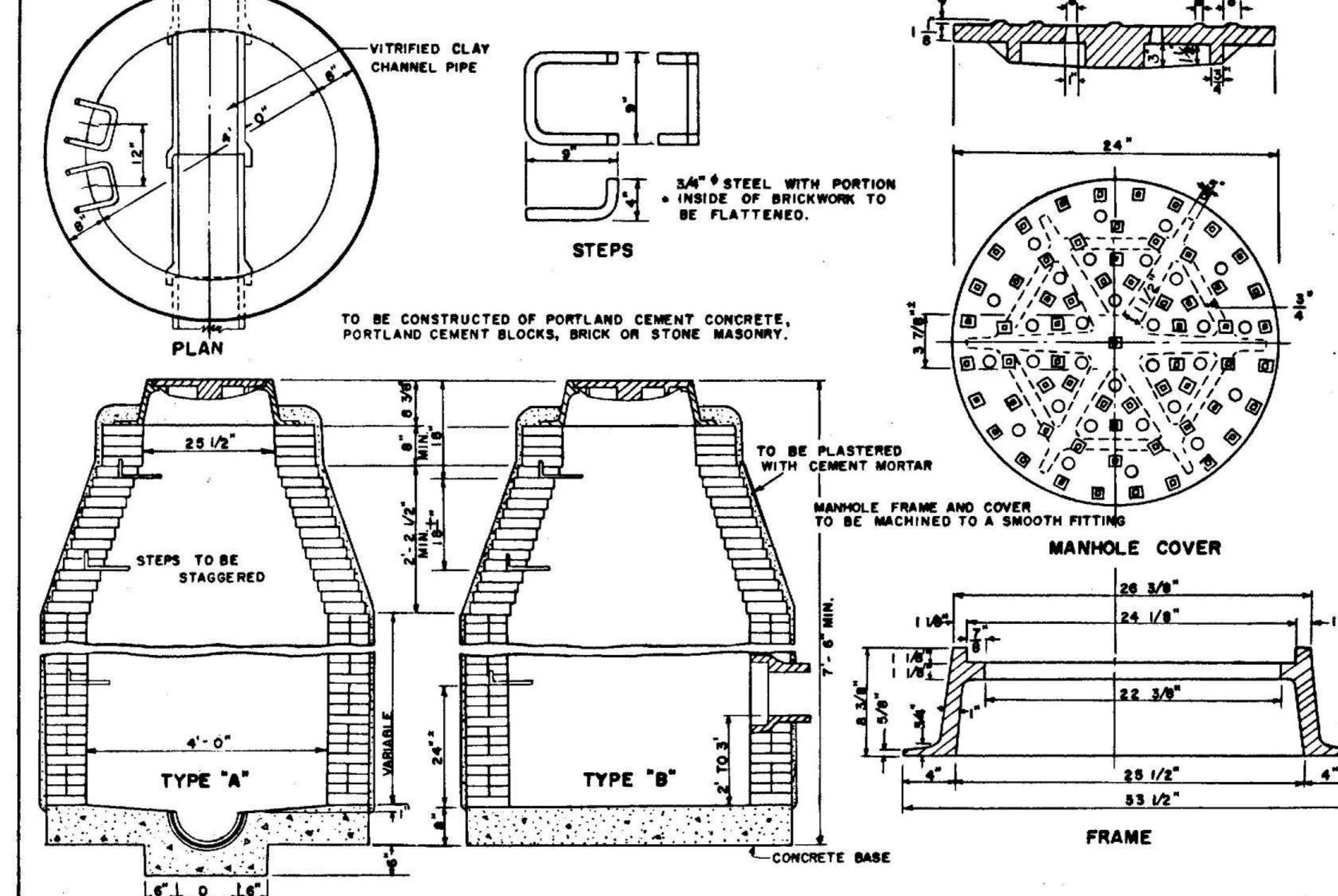


NOTE
TRAPS SIMILAR TO THOSE SHOWN FOR TYPE "B" CATCH BASIN SHALL BE USED FOR ANY CATCH BASIN WHEN REQUIRED.

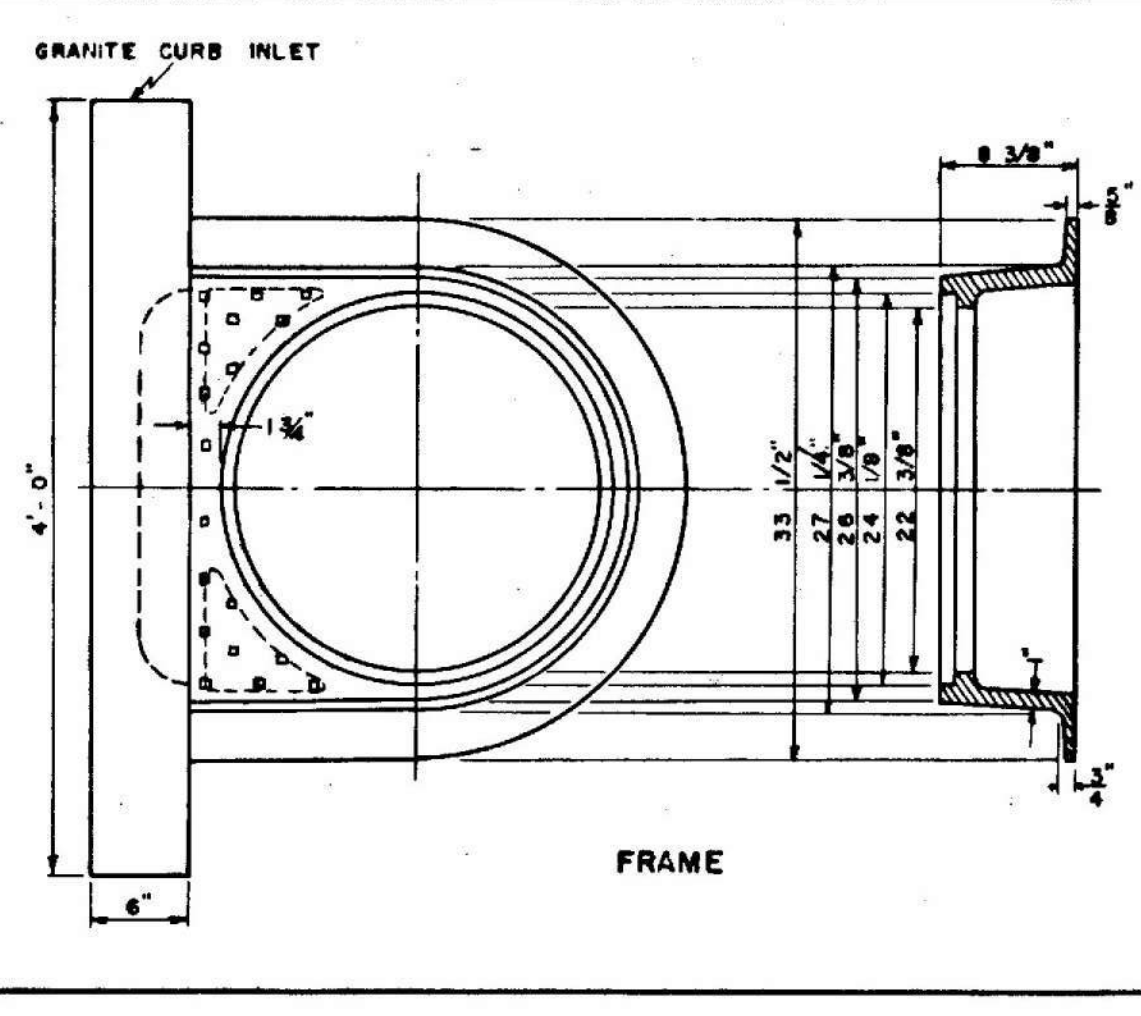
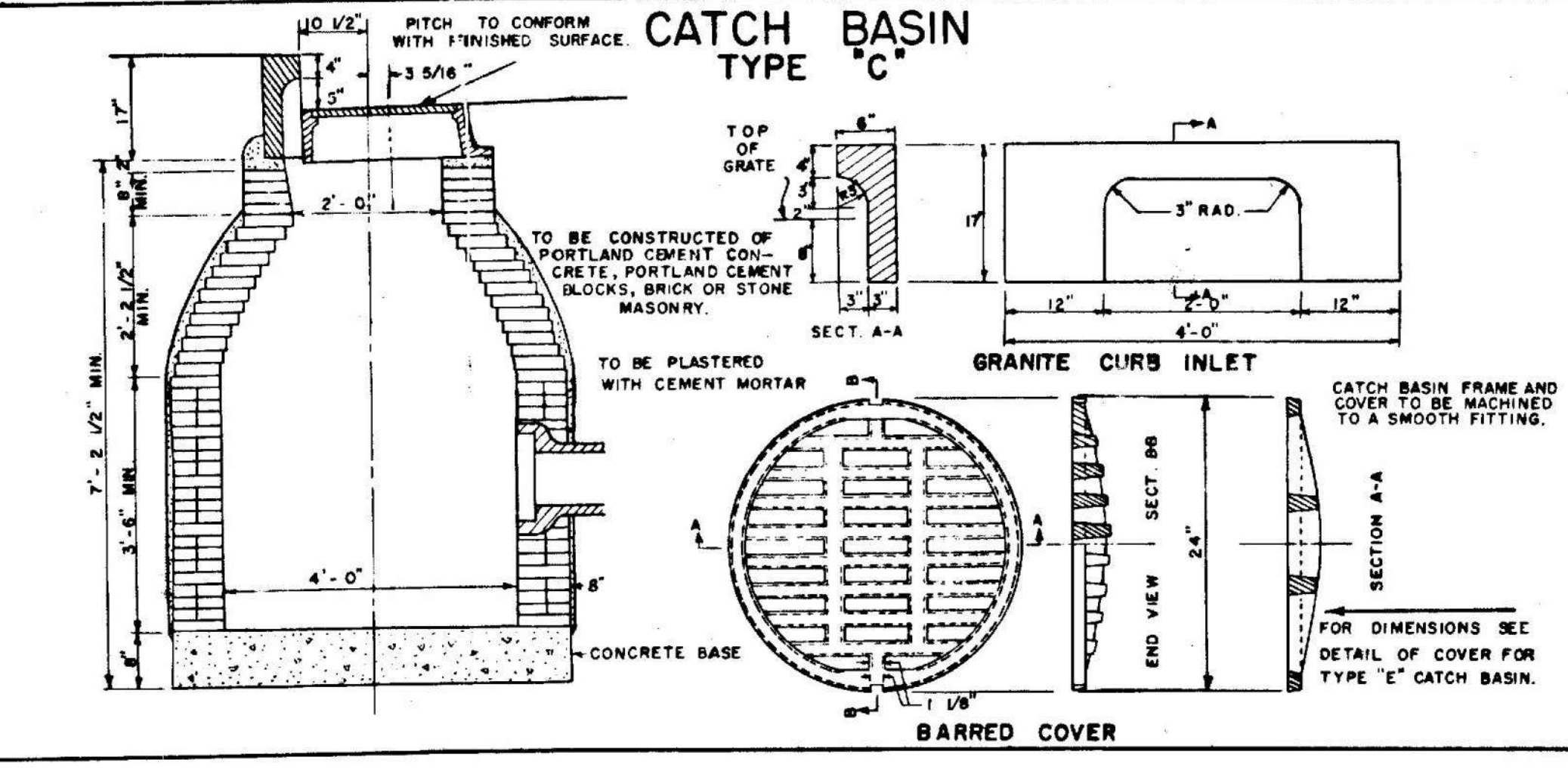
CATCH BASIN TYPE "E"



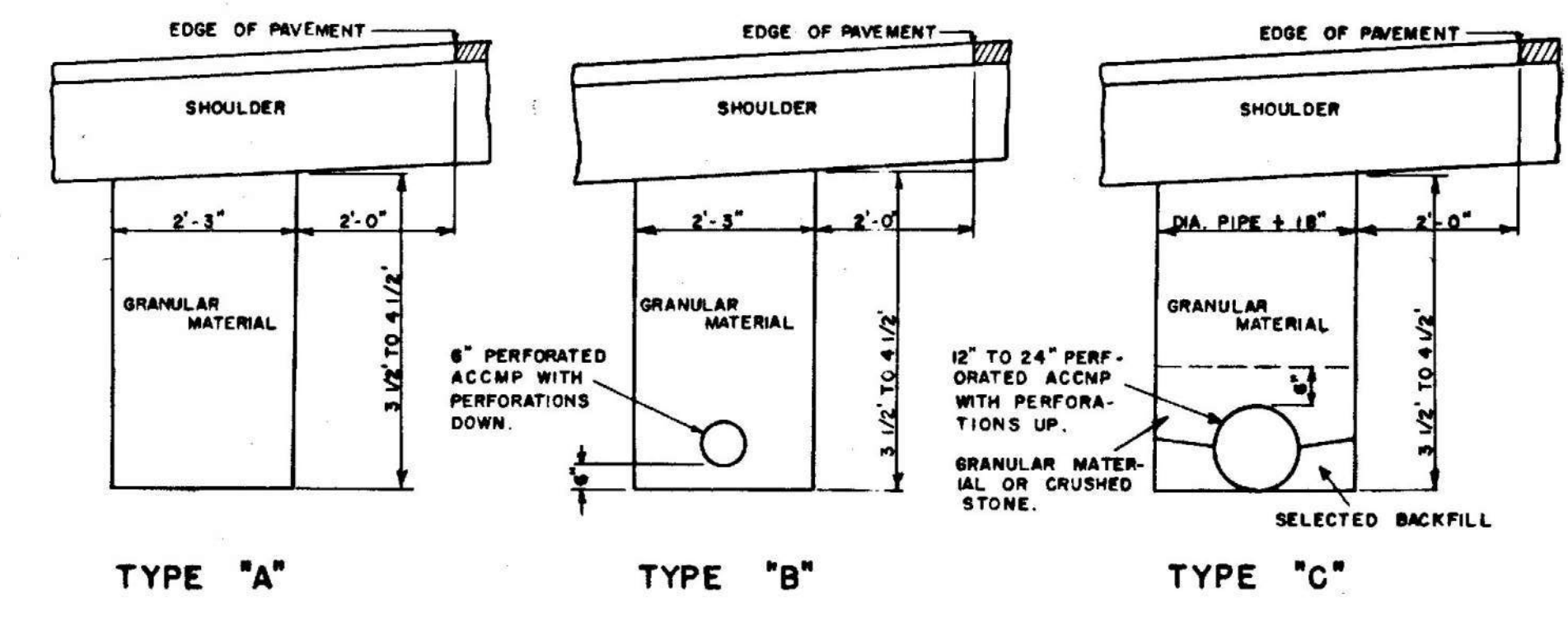
MANHOLES



CATCH BASIN TYPE "C"

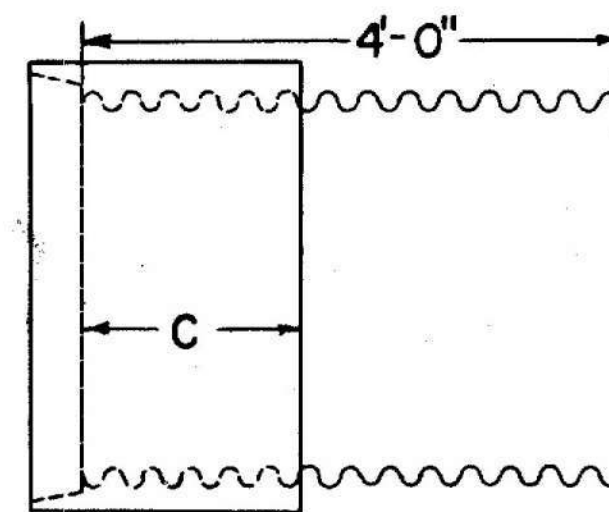


UNDERDRAIN



NOTE:
ALL CATCH BASINS AND MANHOLES CONSTRUCTED OF PORTLAND CEMENT BLOCKS, BRICK OR STONE MASONRY SHALL BE CYLINDRICAL IN SHAPE.

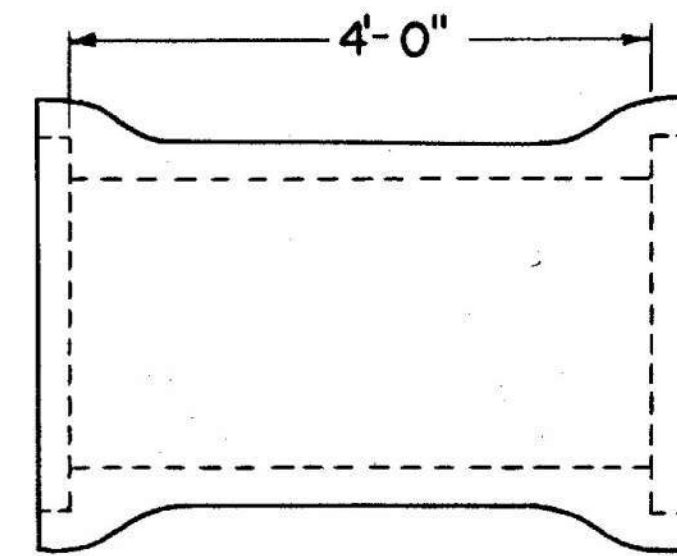
PIPE CONNECTIONS



GROOVE END COMBINATION
For 30" to 72", inclusive, diameter connection
between concrete and metal pipe

"C" = 17" min. for sizes 30" to 48" incl.
"C" = 23" min. for sizes over 48"

Asphalt coated corrugated metal pipe
shall conform to the latest
standard specifications

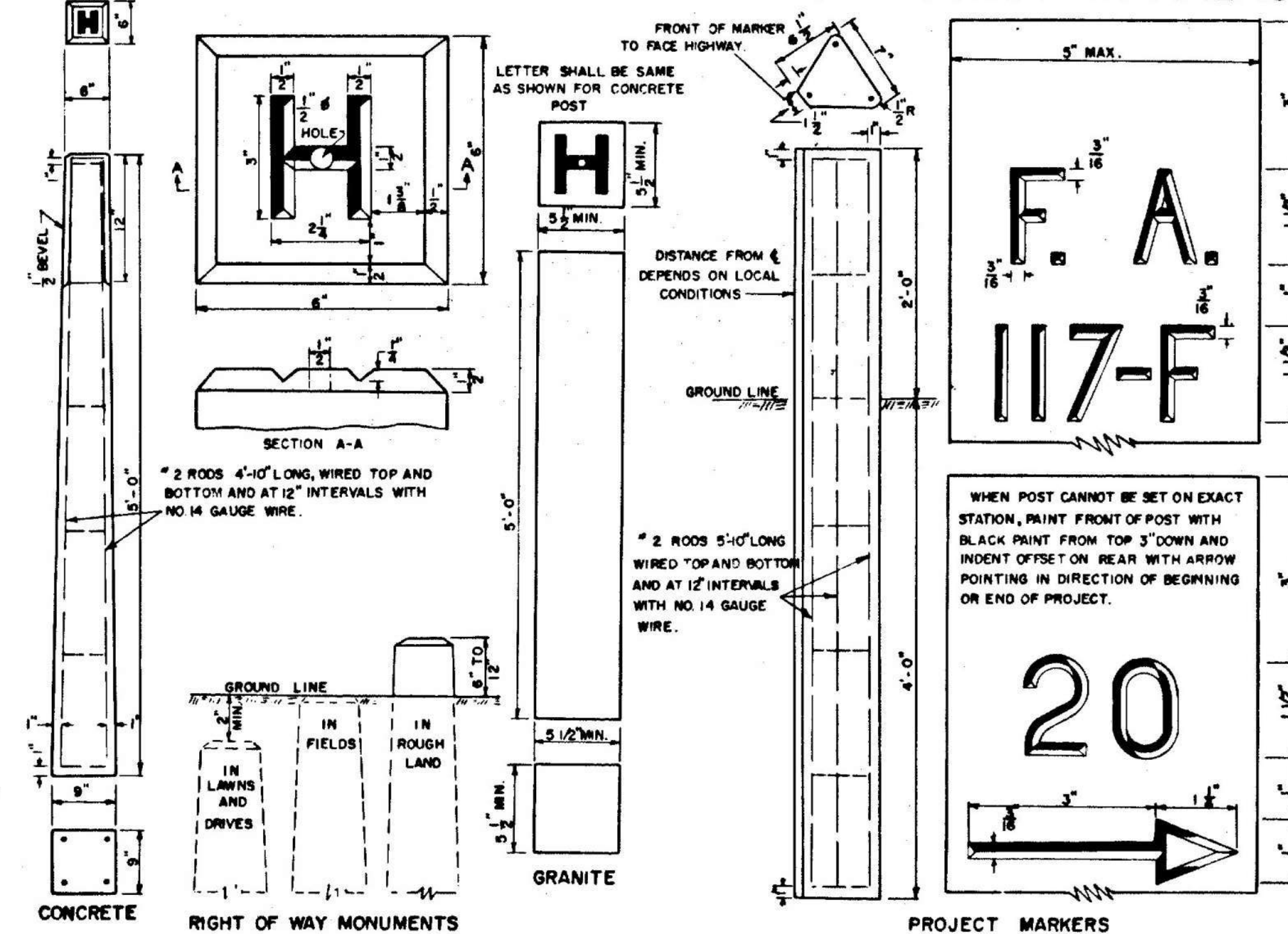


**REINFORCED CONCRETE PIPE CONNECTOR
DOUBLE BELL**

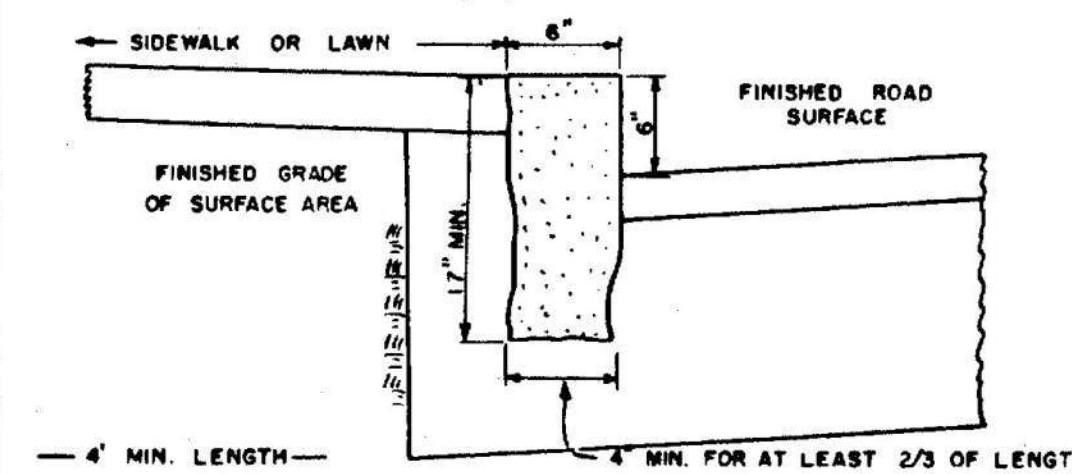
For 12" to 24", inclusive, diameter connection
between concrete and metal pipe

Reinforced concrete pipe shall
conform to the latest standard
specifications

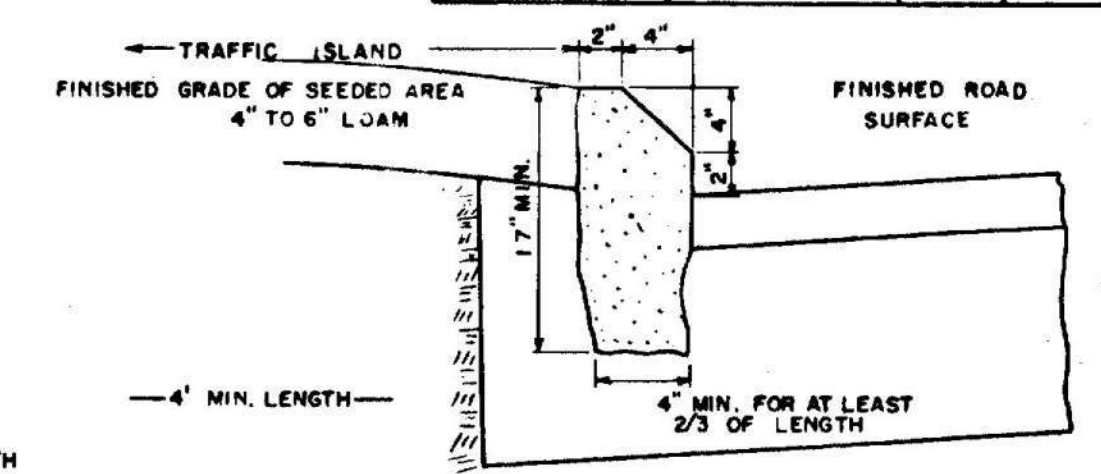
RIGHT OF WAY MONUMENTS & PROJECT MARKERS



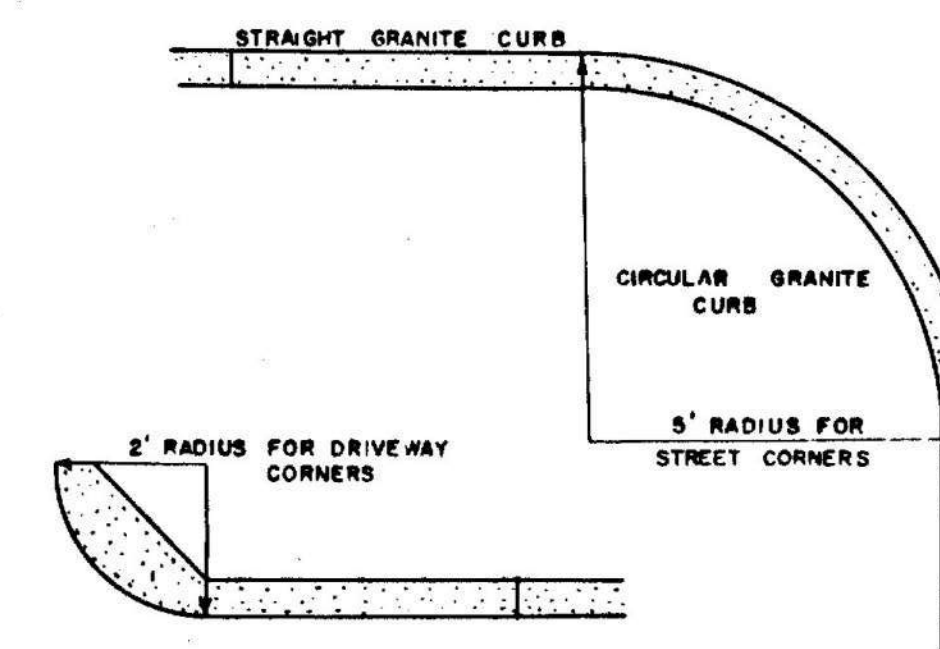
GRANITE CURB & EDGING



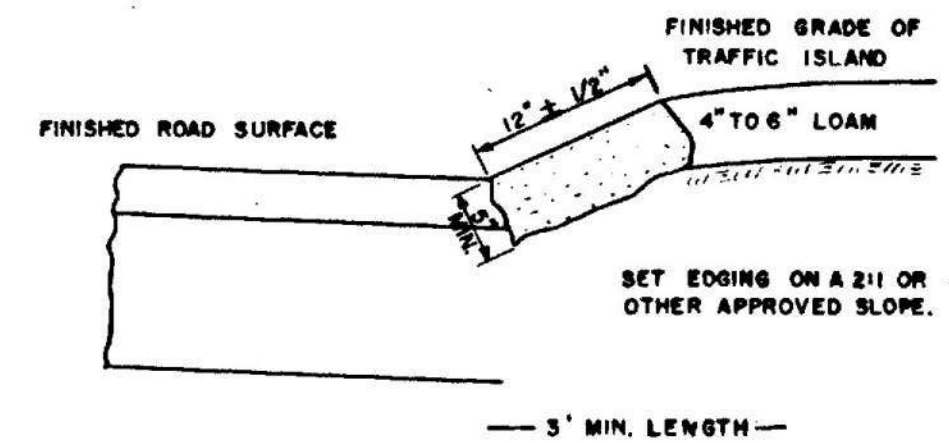
STRAIGHT GRANITE CURB



SLOPED GRANITE CURB

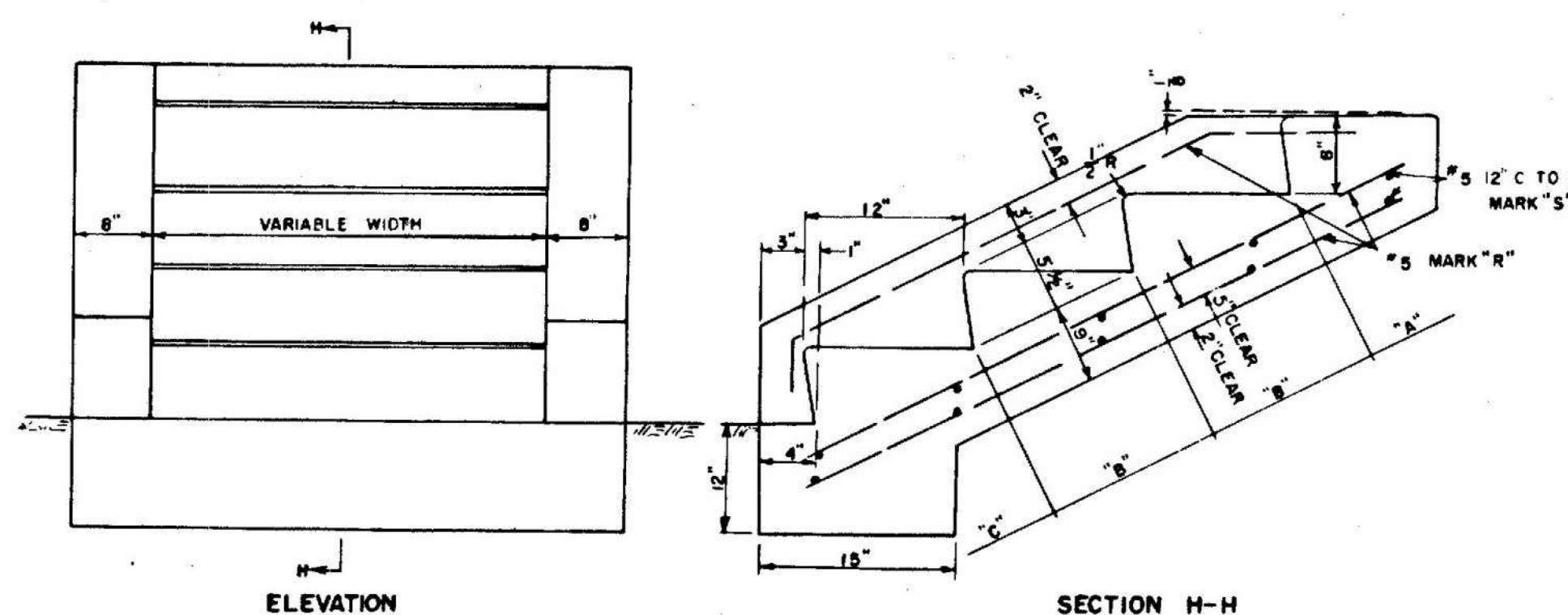


CIRCULAR GRANITE CURB



GRANITE EDGING

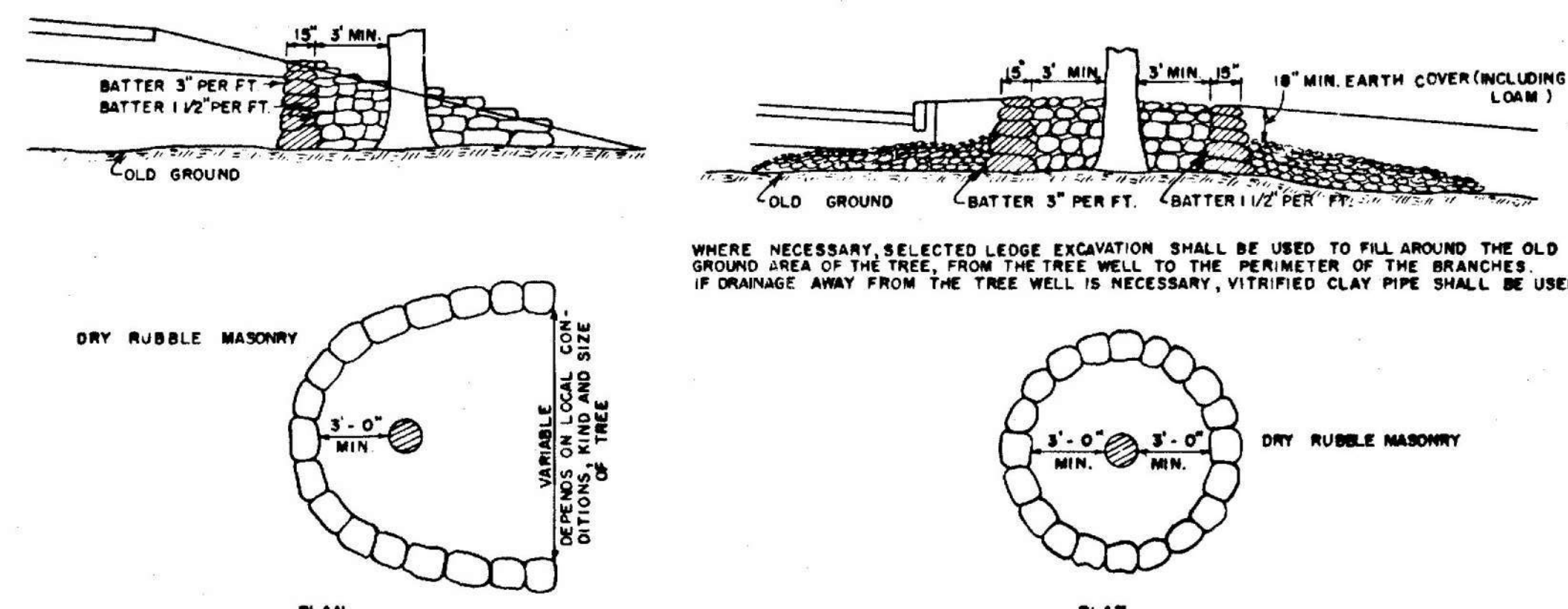
CONCRETE STEPS



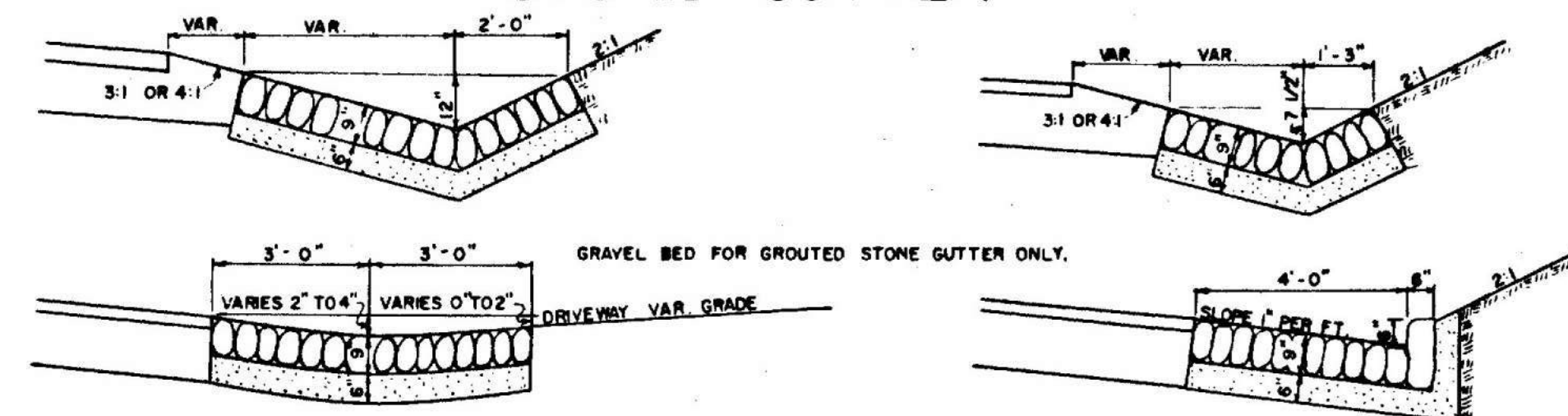
CONCRETE CLASS "A"		
SECTION	STEPS PER FT. OF WIDTH	PARAPET EACH WALL
"A" HEADER	.032 CU. YDS.	.032 CU. YDS.
"B" EA. INTER. ST.	.040 CU. YDS.	.040 CU. YDS.
"C" FOOTER	.071 CU. YDS.	.065 CU. YDS.

REINFORCING STEEL			
MARK	SIZE	NUMBER	LENGTH (EACH)
R	#5	3 EACH PARAPET 1043 LBS. PER FT.	8" FOR "A" +13" FOR EACH "B" +16" FOR "C"
S	#5	2 FOR "A" 2 FOR EACH "B" 2 FOR "C"	6" EACH PARAPET +2" PER FT. OF WIDTH

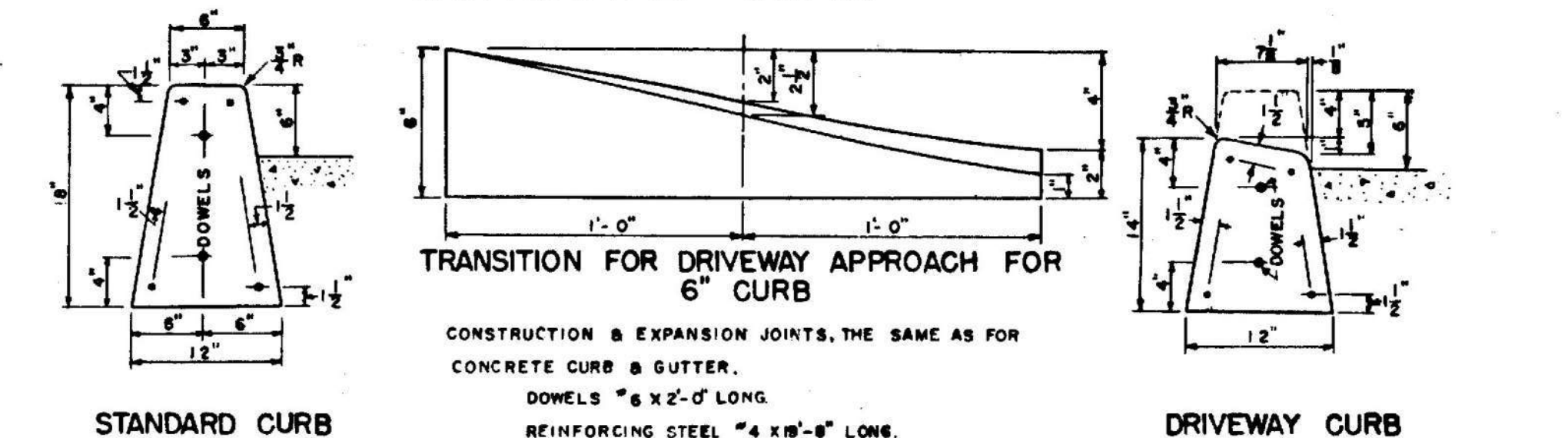
TREE WELLS



STONE GUTTER



CONCRETE CURB

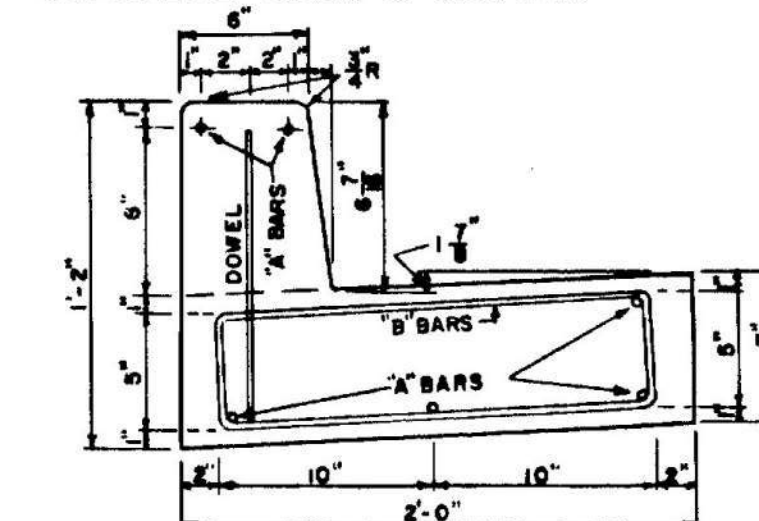


STANDARD CURB

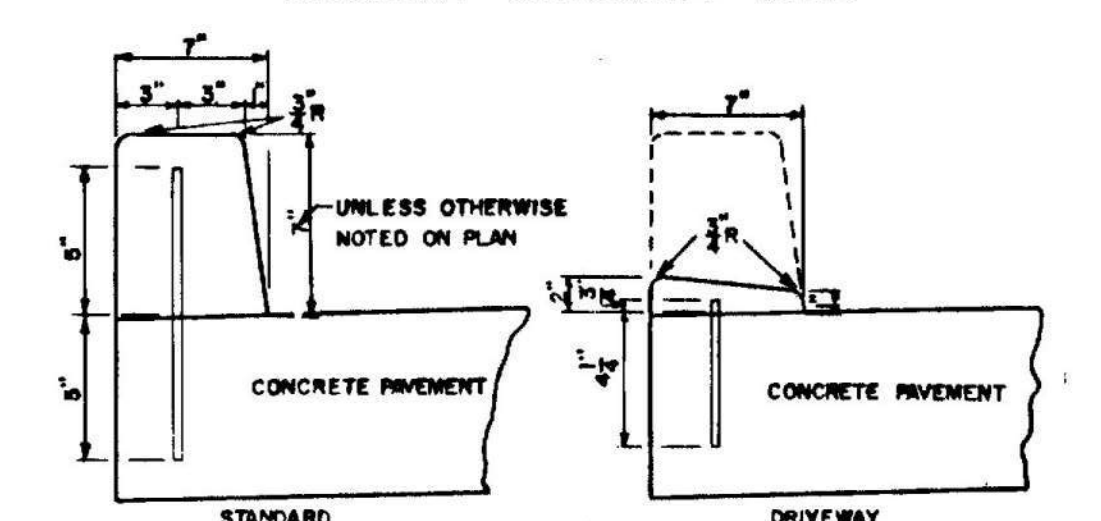
CONSTRUCTION & EXPANSION JOINTS, THE SAME AS FOR
CONCRETE CURB & GUTTER.
DOWELS #6 X 2'-0" LONG.
REINFORCING STEEL #4 X 10'-0" LONG.

DRIVEWAY CURB

CONCRETE CURB & GUTTER

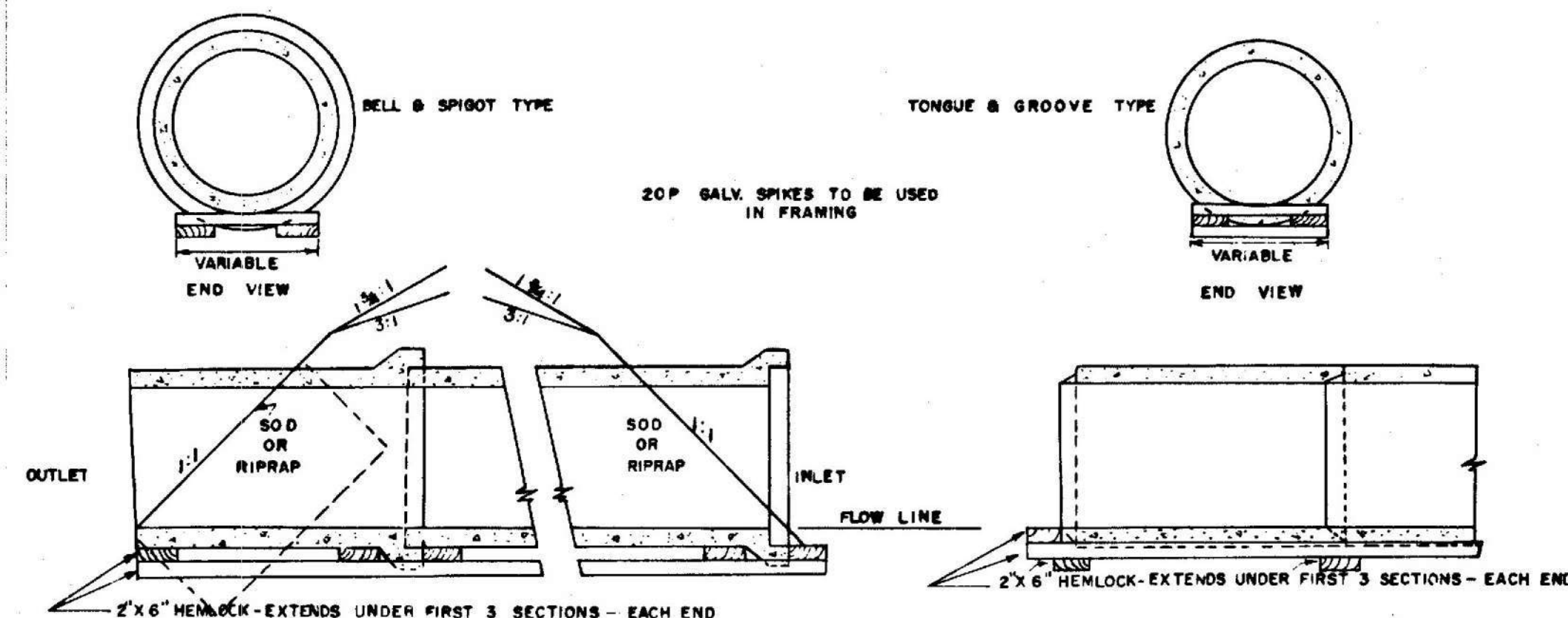


INTEGRAL CONCRETE CURB

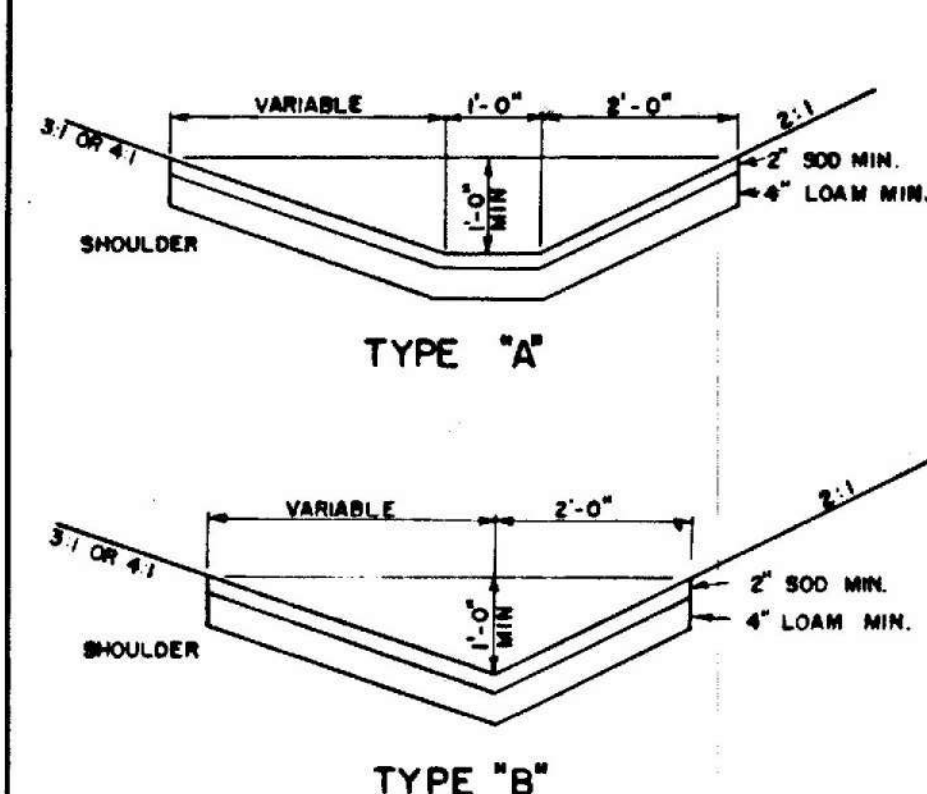


EXPANSION & DUMMY JOINTS IN CURB SHALL BE CONSTRUCTED
AT SAME LOCATION AS EXPANSION & DUMMY JOINTS IN CON-
CRETE PAVEMENT.
DOWELS #4 SPACED 1'-0" C.T.O.C. FIRST DOWEL TO BE PLACED
6" FROM END OF JOINT.

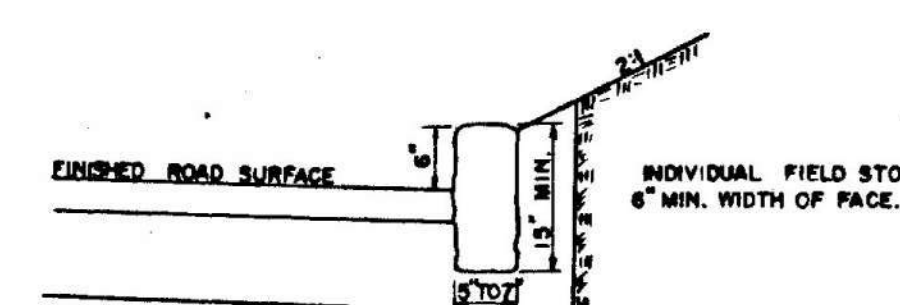
CONCRETE PIPE CRADLE



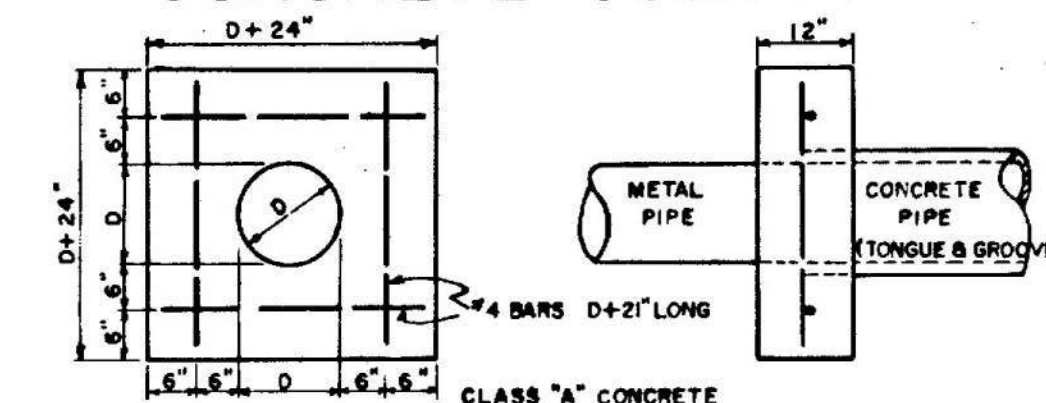
SODDED GUTTER



FIELD STONE CURB



CONCRETE COLLAR

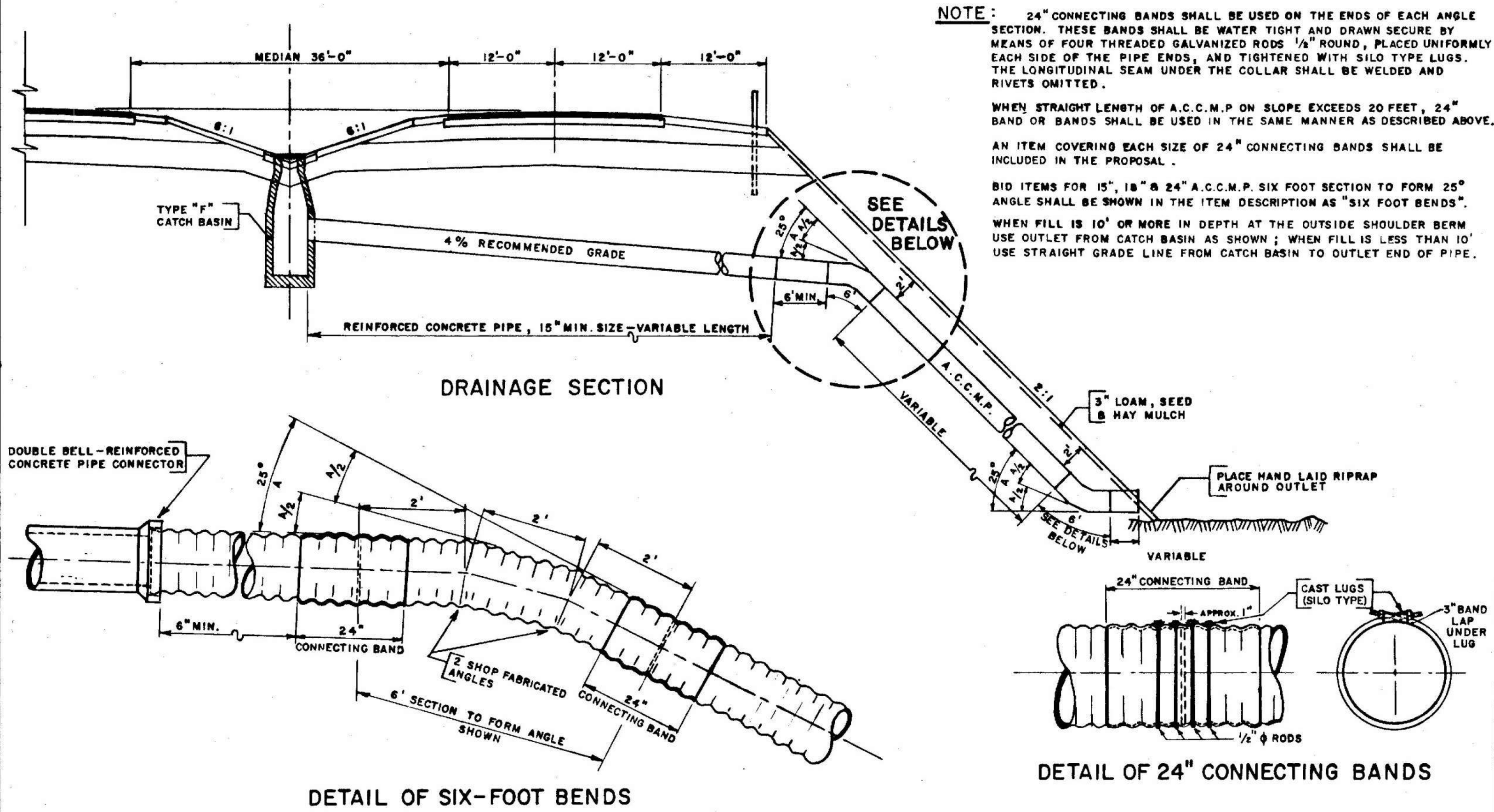


MAINE STATE HIGHWAY COMMISSION
AUGUSTA, MAINE

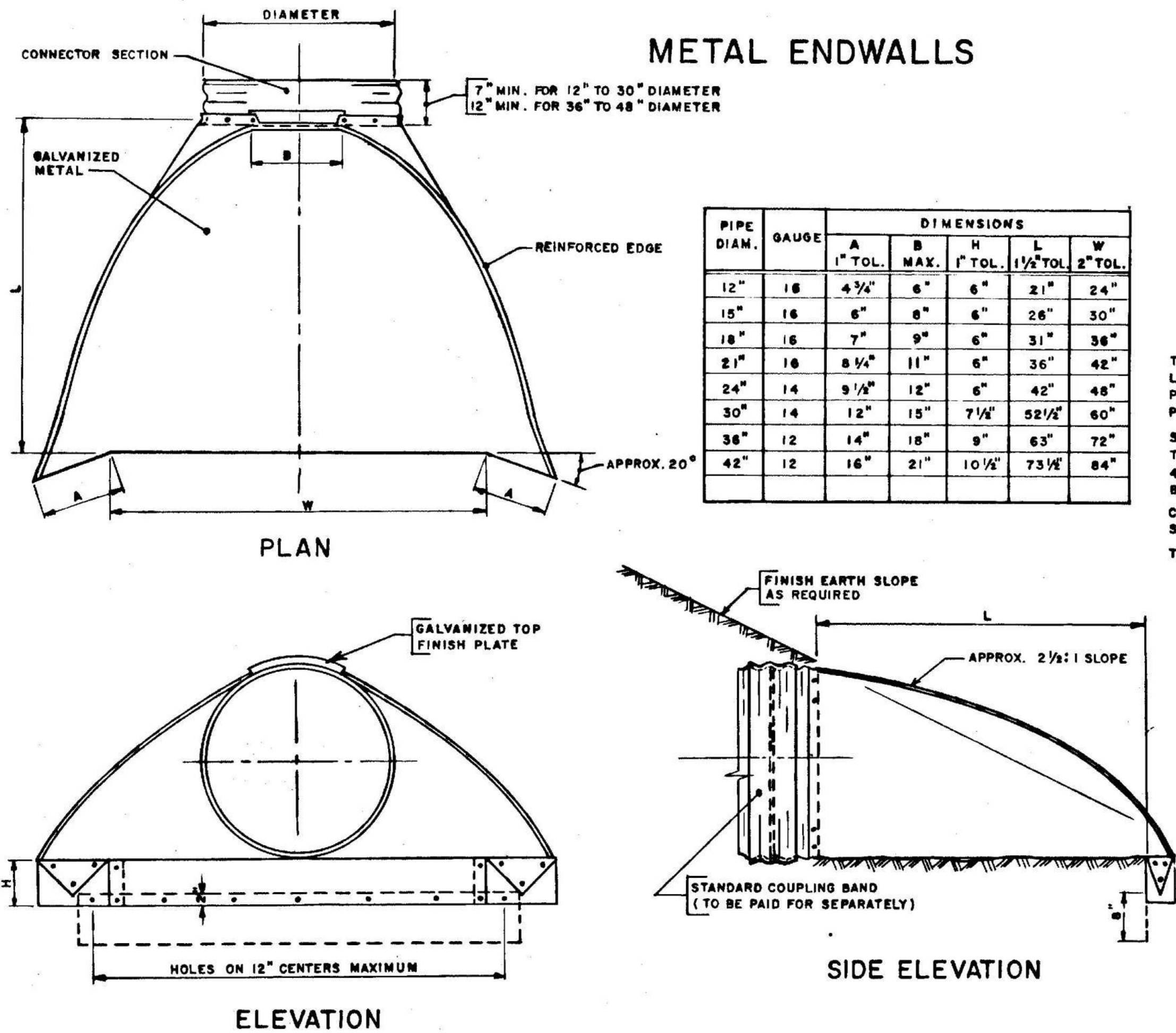
STANDARD DETAILS

MISCELLANEOUS ITEMS

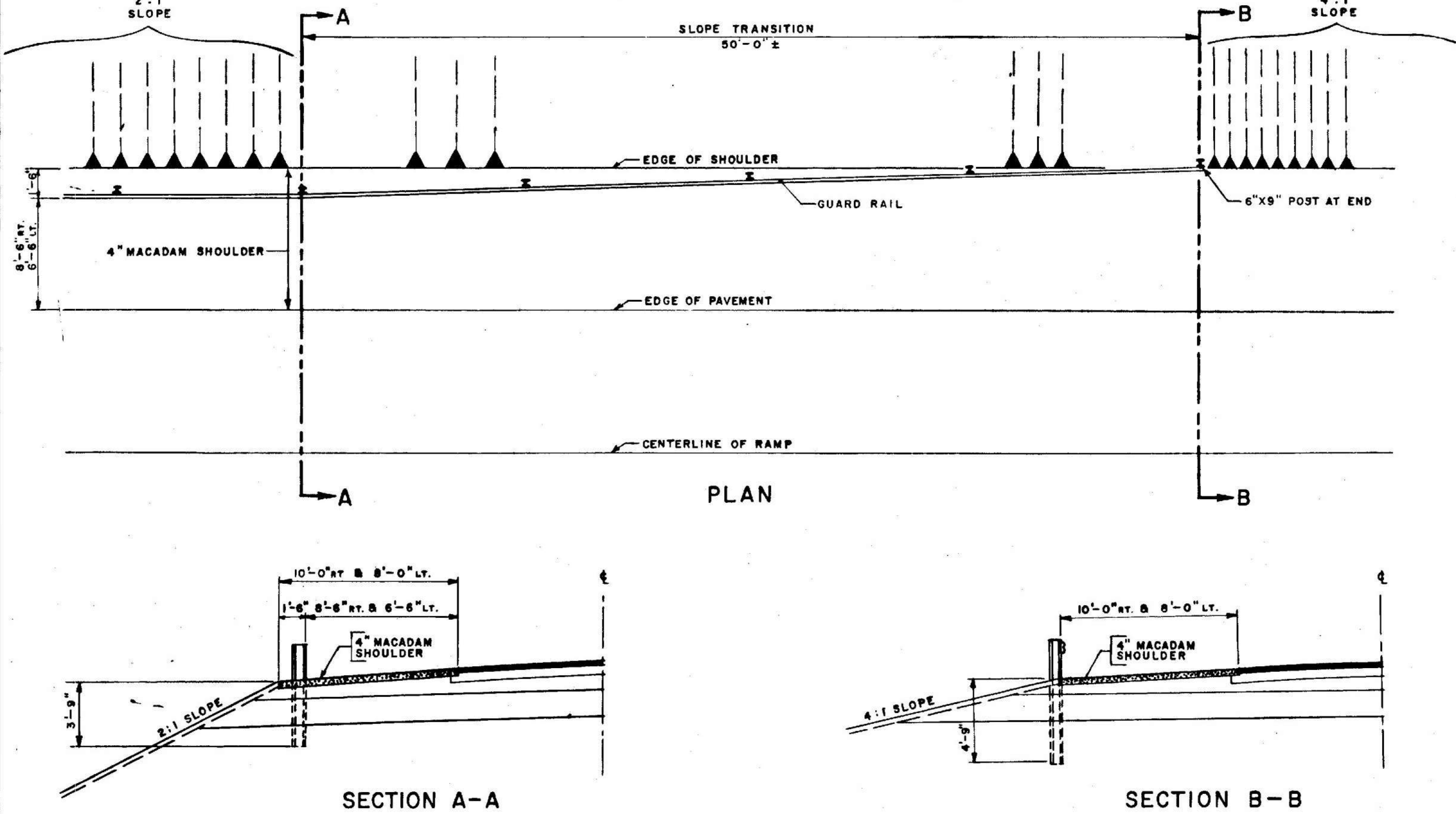
BENDS AND BANDS for A.C.C.M.P. MEDIAN DRAINAGE



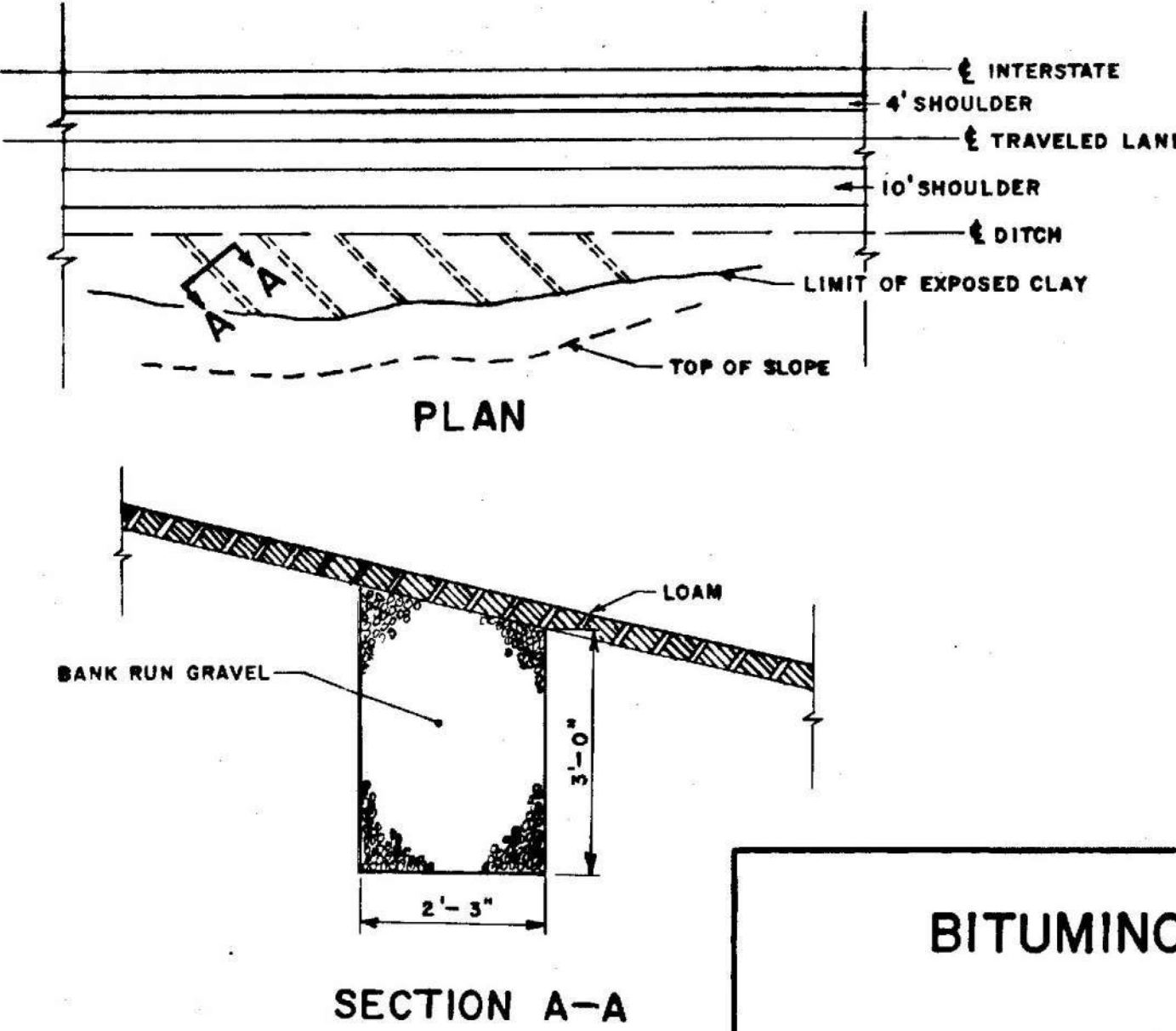
METAL ENDWALLS



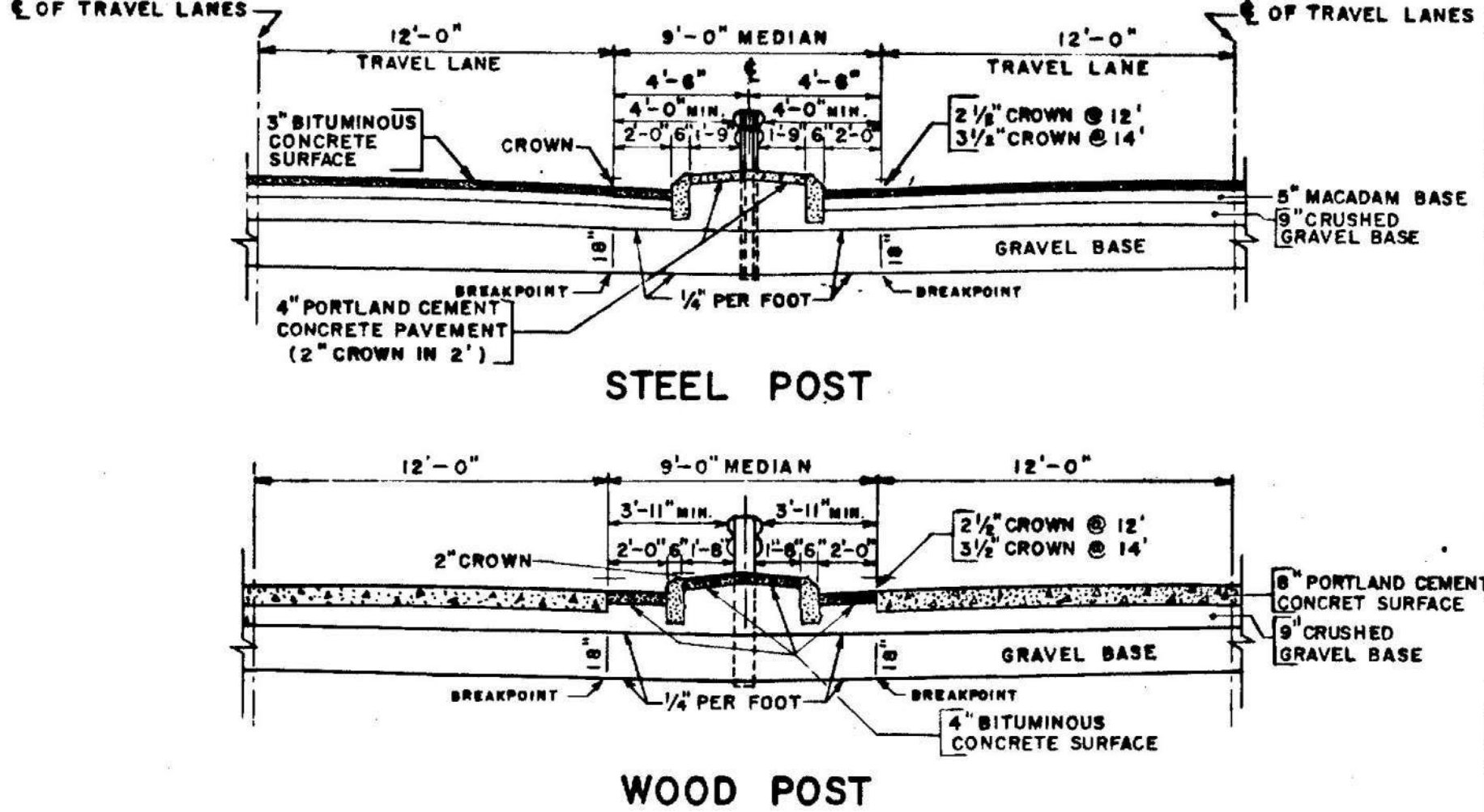
GUARD RAIL LOCATION ON RAMPS AT SLOPE TRANSITION ~ 2:1 to 4:1



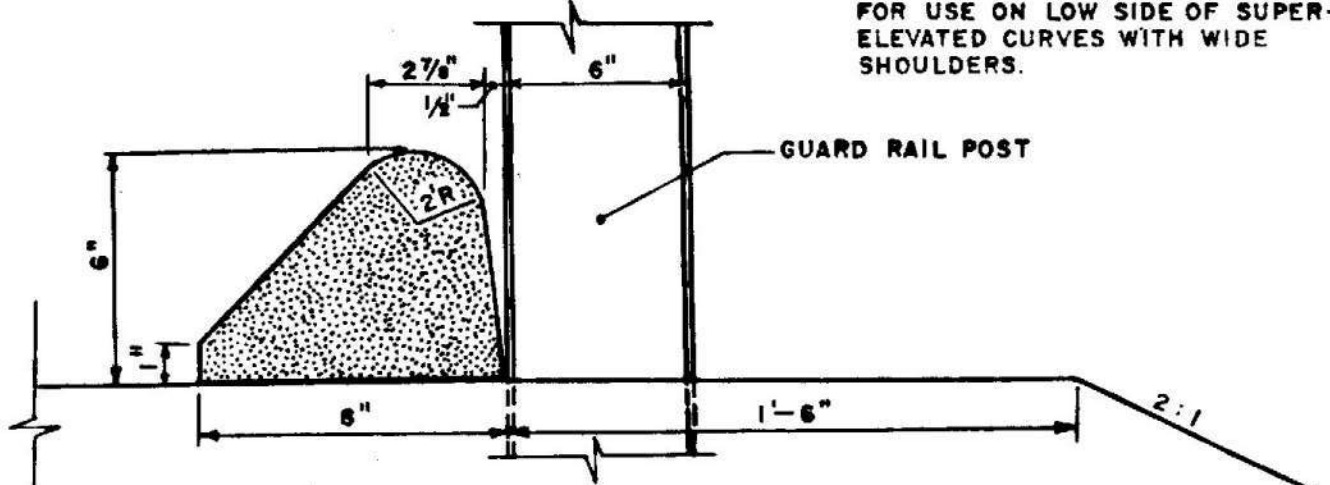
CUT SLOPE DRAIN



9-FOOT MEDIAN



BITUMINOUS CONCRETE CURB

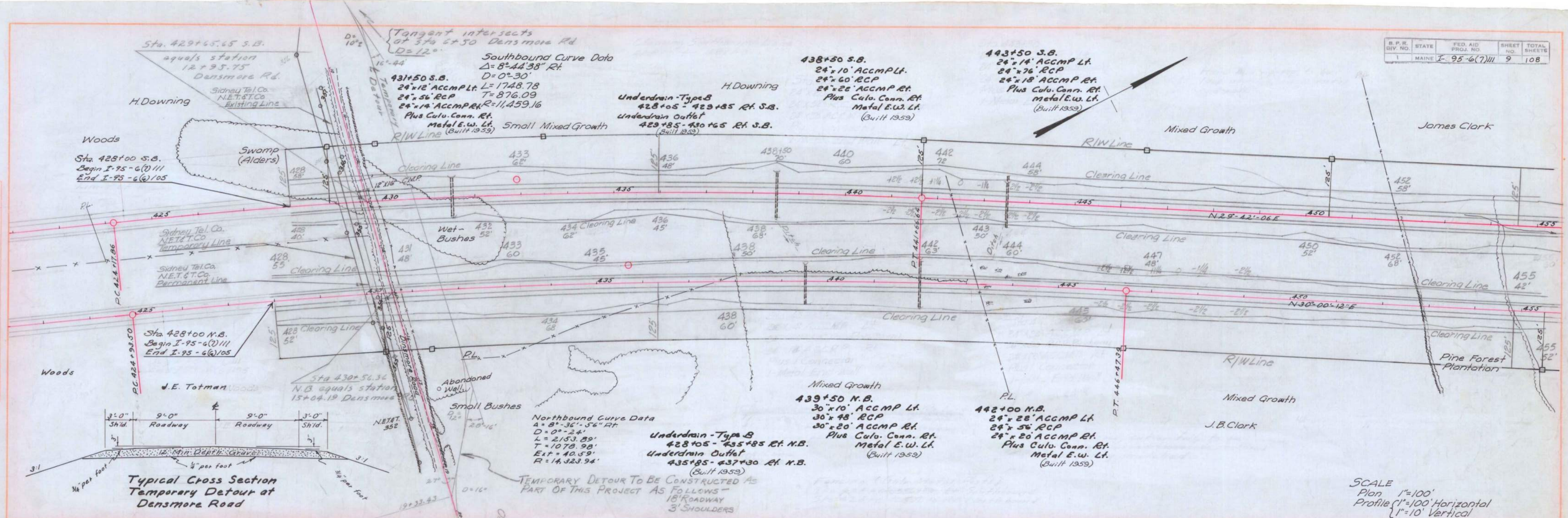


MAINE STATE HIGHWAY COMMISSION
AUGUSTA, MAINE

STANDARD DETAILS

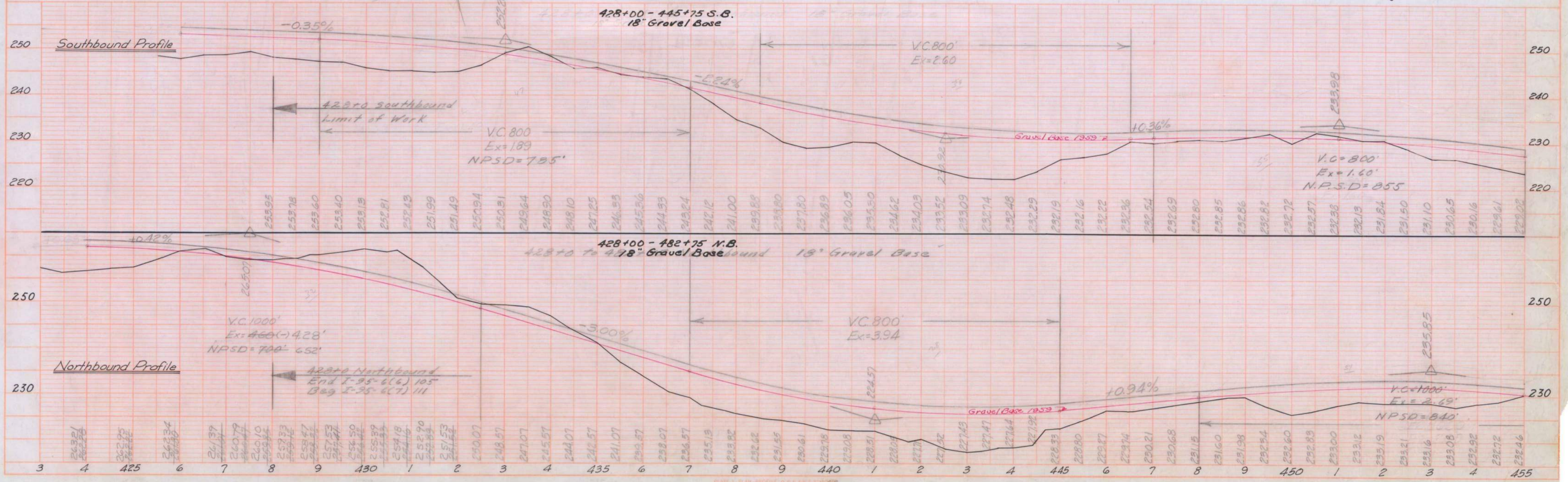
BENDS & BANDS, METAL ENDWALLS,
GUARD RAIL ON RAMPS, CUT SLOPE
DRAIN, 9-FOOT MEDIAN & BITUMINOUS
CONCRETE CURB

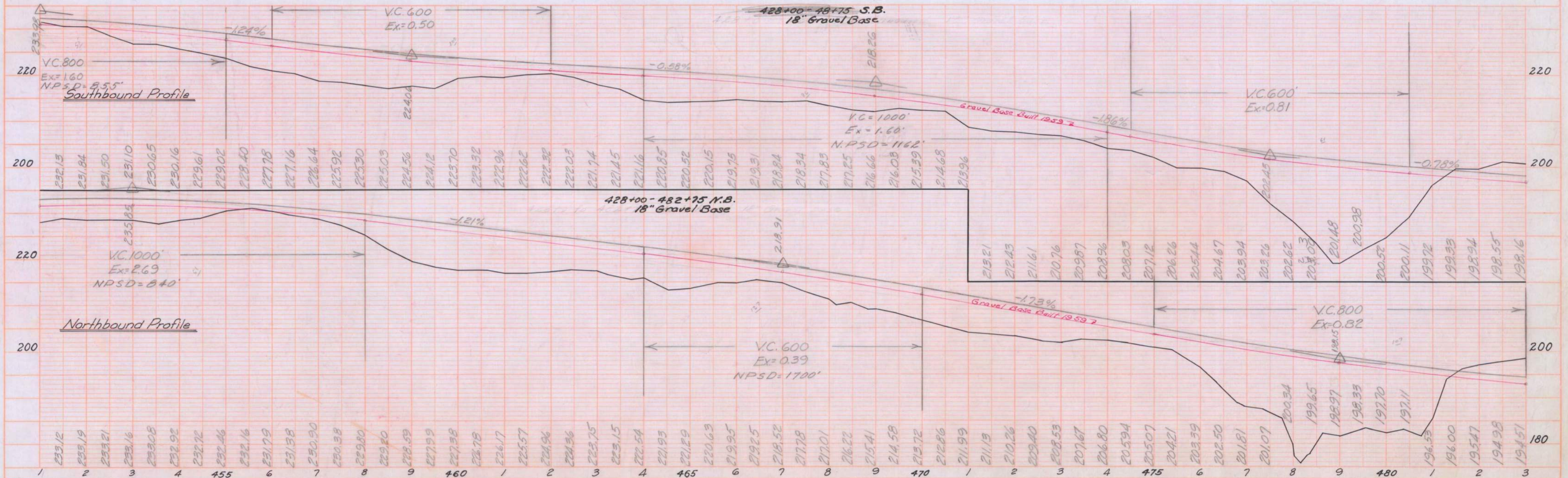
PLAN
 1. W. South & Downing
 2. N.B. & T.L.M.
 3. J.B. Clark
 4. J.E. Totman
 5. J.B. Clark
 6. J.B. Clark
 7. J.B. Clark
 8. J.B. Clark
 9. J.B. Clark
 10. J.B. Clark
 11. J.B. Clark
 12. J.B. Clark
 13. J.B. Clark
 14. J.B. Clark
 15. J.B. Clark
 16. J.B. Clark
 17. J.B. Clark
 18. J.B. Clark
 19. J.B. Clark
 20. J.B. Clark
 21. J.B. Clark
 22. J.B. Clark
 23. J.B. Clark
 24. J.B. Clark
 25. J.B. Clark
 26. J.B. Clark
 27. J.B. Clark
 28. J.B. Clark
 29. J.B. Clark
 30. J.B. Clark
 31. J.B. Clark
 32. J.B. Clark
 33. J.B. Clark
 34. J.B. Clark
 35. J.B. Clark
 36. J.B. Clark
 37. J.B. Clark
 38. J.B. Clark
 39. J.B. Clark
 40. J.B. Clark
 41. J.B. Clark
 42. J.B. Clark
 43. J.B. Clark
 44. J.B. Clark
 45. J.B. Clark
 46. J.B. Clark
 47. J.B. Clark
 48. J.B. Clark
 49. J.B. Clark
 50. J.B. Clark
 51. J.B. Clark
 52. J.B. Clark
 53. J.B. Clark
 54. J.B. Clark
 55. J.B. Clark
 56. J.B. Clark
 57. J.B. Clark
 58. J.B. Clark
 59. J.B. Clark
 60. J.B. Clark
 61. J.B. Clark
 62. J.B. Clark
 63. J.B. Clark
 64. J.B. Clark
 65. J.B. Clark
 66. J.B. Clark
 67. J.B. Clark
 68. J.B. Clark
 69. J.B. Clark
 70. J.B. Clark
 71. J.B. Clark
 72. J.B. Clark
 73. J.B. Clark
 74. J.B. Clark
 75. J.B. Clark
 76. J.B. Clark
 77. J.B. Clark
 78. J.B. Clark
 79. J.B. Clark
 80. J.B. Clark
 81. J.B. Clark
 82. J.B. Clark
 83. J.B. Clark
 84. J.B. Clark
 85. J.B. Clark
 86. J.B. Clark
 87. J.B. Clark
 88. J.B. Clark
 89. J.B. Clark
 90. J.B. Clark
 91. J.B. Clark
 92. J.B. Clark
 93. J.B. Clark
 94. J.B. Clark
 95. J.B. Clark
 96. J.B. Clark
 97. J.B. Clark
 98. J.B. Clark
 99. J.B. Clark
 100. J.B. Clark
 101. J.B. Clark
 102. J.B. Clark
 103. J.B. Clark
 104. J.B. Clark
 105. J.B. Clark
 106. J.B. Clark
 107. J.B. Clark
 108. J.B. Clark



Typical Cross Section
 Temporary Detour at
 Densmore Road

SCALE
 Plan 1"=100'
 Profile 1"=100' Horizontal
 1"=10' Vertical





PLAN
DATE: 10/1/59
BY: J.W. Sowell & G. Griffin
CHECKED: J.W.S. & G.G.
NOTES: BOOK 108, SHEET 11
REVISIONS: 1. 10/1/59
2. 11/1/59

PROFILE
DATE: 10/1/59
BY: J.W. Sowell & G. Griffin
CHECKED: J.W.S. & G.G.
NOTES: BOOK 108, SHEET 11
REVISIONS: 1. 10/1/59
2. 11/1/59

