

DRAINS DI-32 REQ'D.

Paint Pipe inside & out
except as noted.

To be scale weighed
after assembling

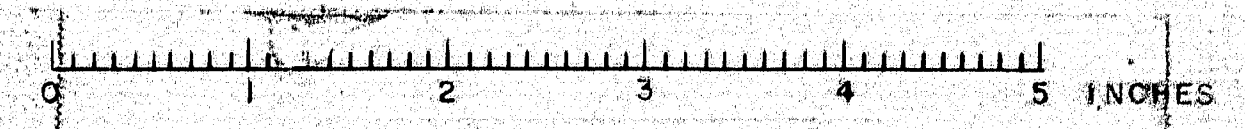
ITEM 702-103

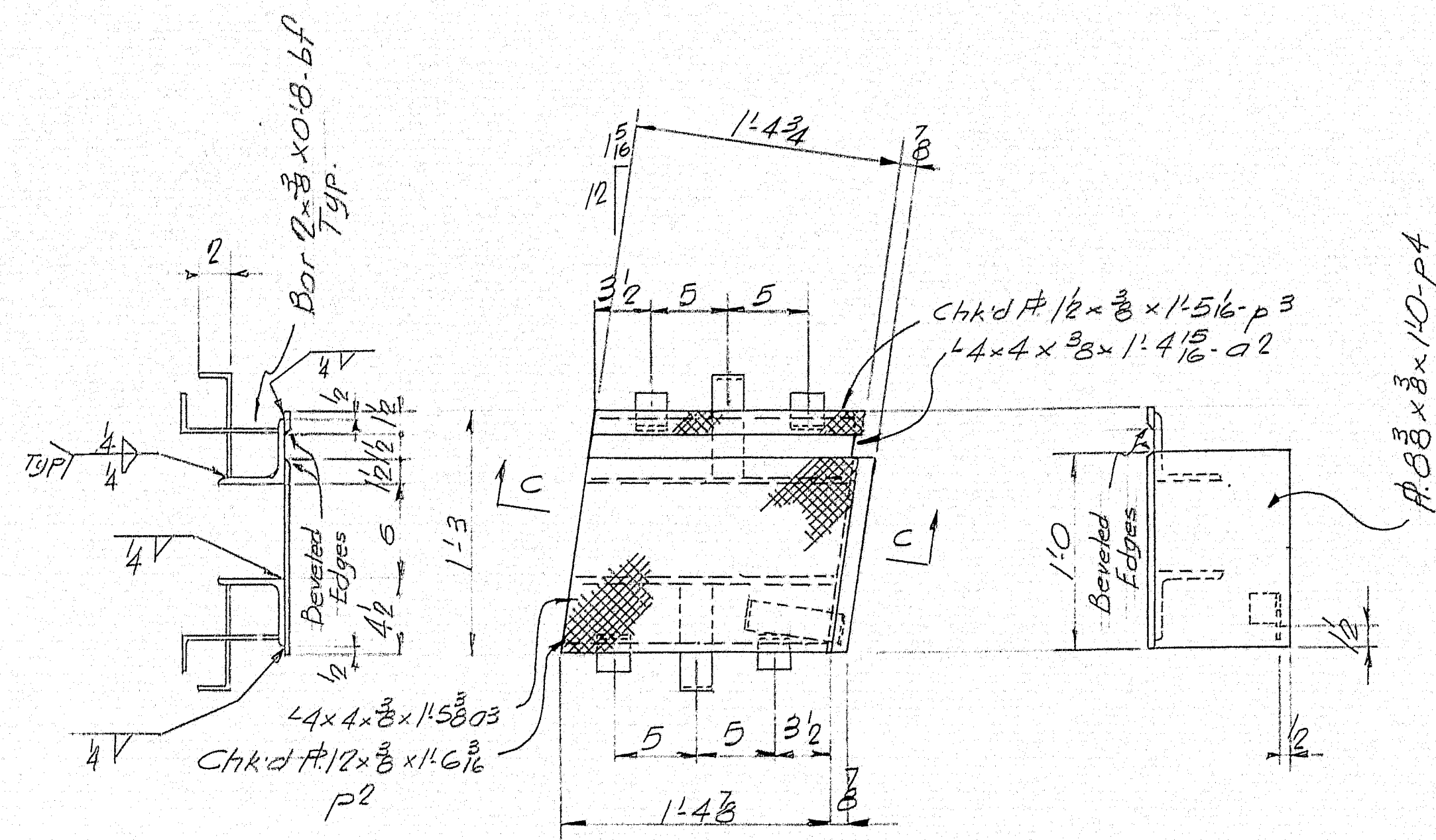
DRAWN J.P.F.
CHECKED P.L.F.
APPROVED 8-28-58
RIVETS _____
HOLES _____
PAINT Per State of Maine
Specs. & As Noted.

JOB TOWN FARM ROAD BRIDGE, SIDNEY, MAINE
CUSTOMER CIACHETTE BROS.
ARCHITECT OR ENGINEER MAINE S.H.C. BRIDGE DIV.

BANCROFT & MARTIN ROLLING MILLS CO.
SOUTH PORTLAND, MAINE
DATE 8-15-58 , ORD. No. 3709 8-21-514

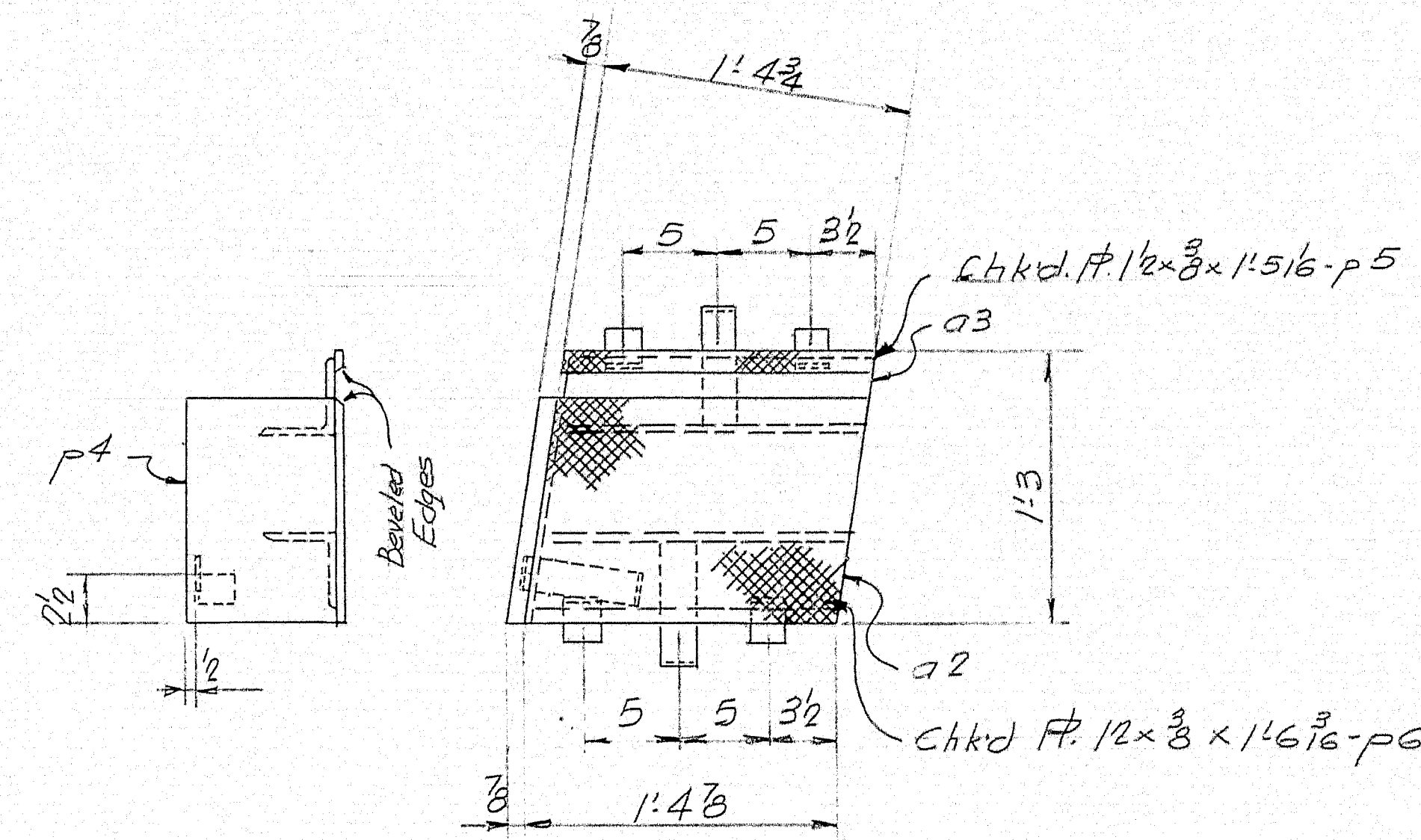
74-172 A





ED2- 2 REQ'D

Do not paint inside of L3
& anchor bars.

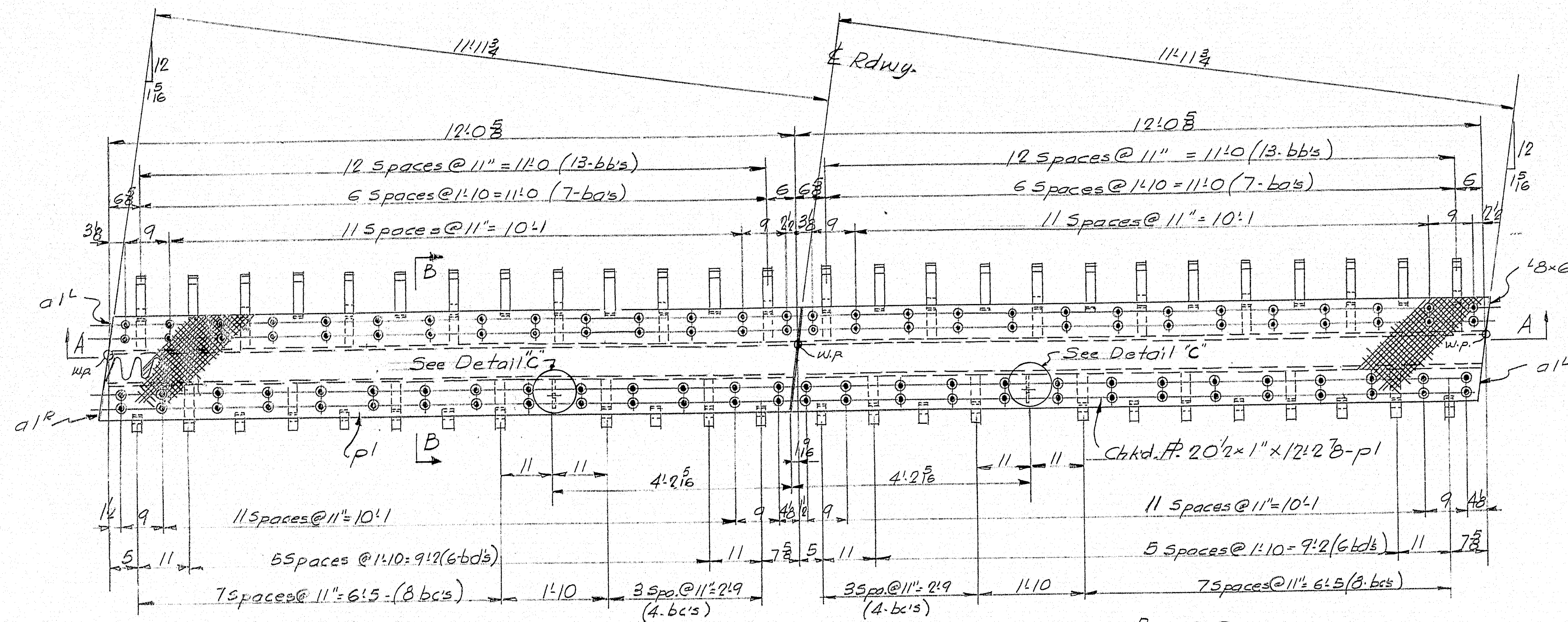


NOTES:

For Bill of Material & Notes
see sheet 512.

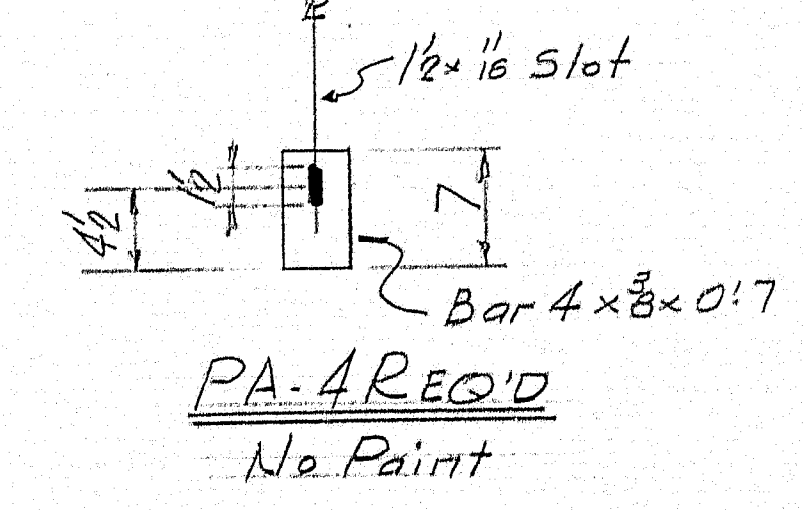
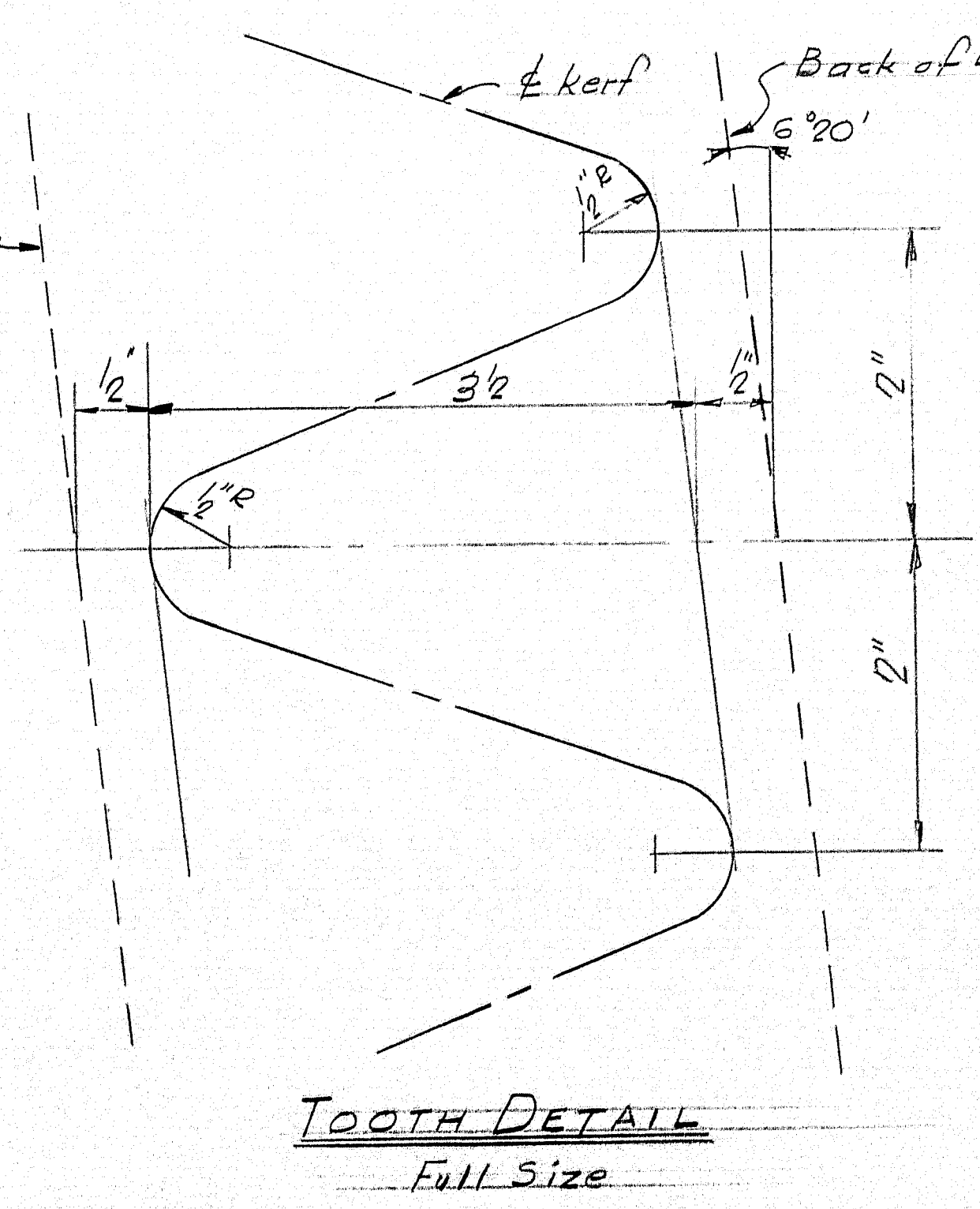
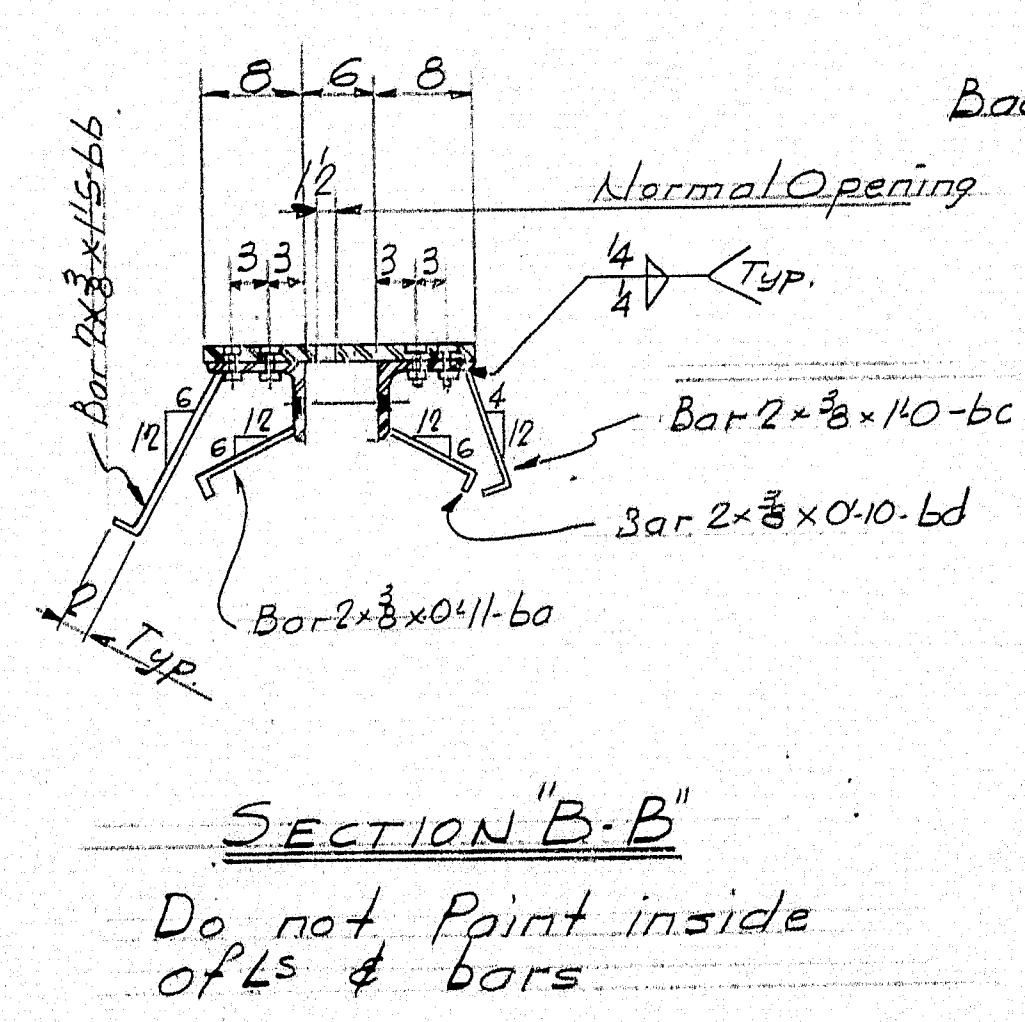
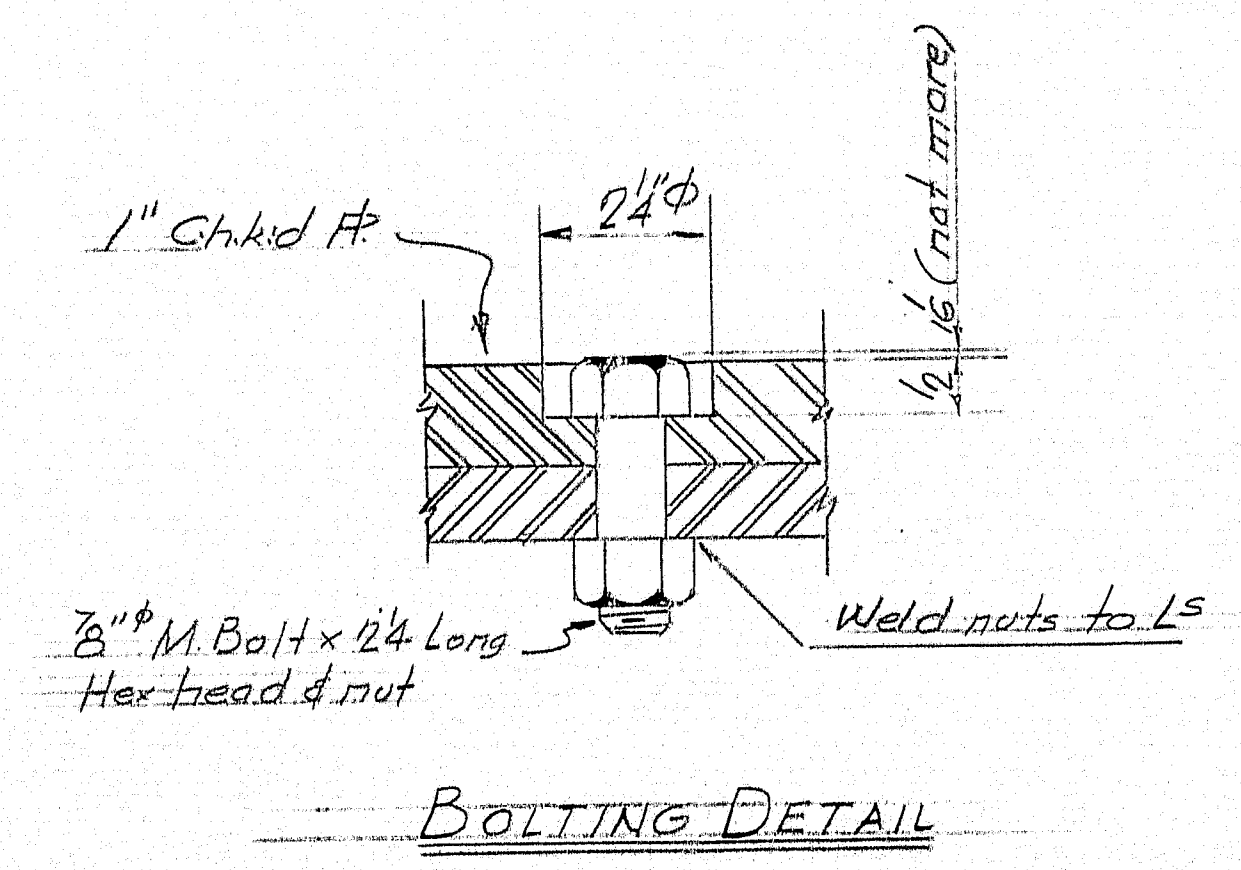
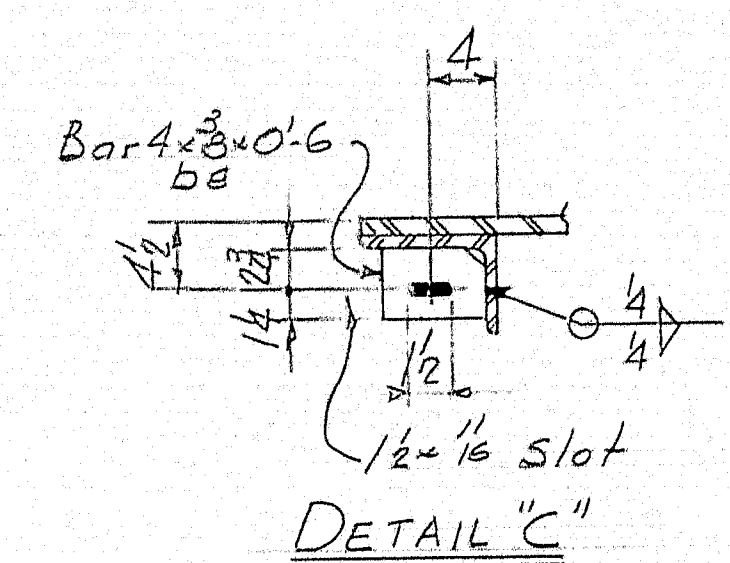
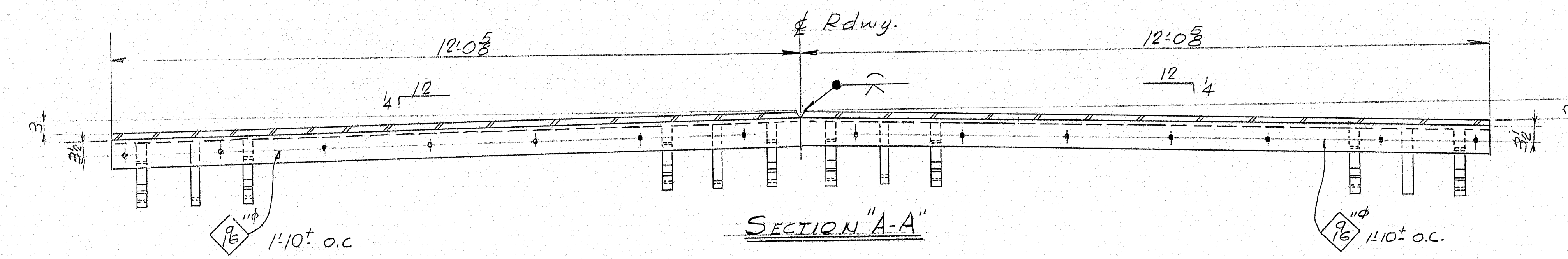
DRAWN	8-15-58	J.P.F.
REVISION	9-2-58	J.P.F.
REVISION		
REVISION		

APP. 8-20-58	CURB EXPANSION DAMS	
	Bancroft & Martin Rollings Mills Company	
	South Portland 7, Maine	
	TOVIN FARM ROAD BRIDGE	
	SIDNEY, MAINE	
71	CUSTOMER	GIANCHETTE BROS.
	DESIGNER	MAINE S.H.C. BRIDGED INC.
ORDER NO. 3709		DWG. NO. 8-211-S13



ED1^L - 2 REQ'D.

ED1^R - 2 REQ'D.



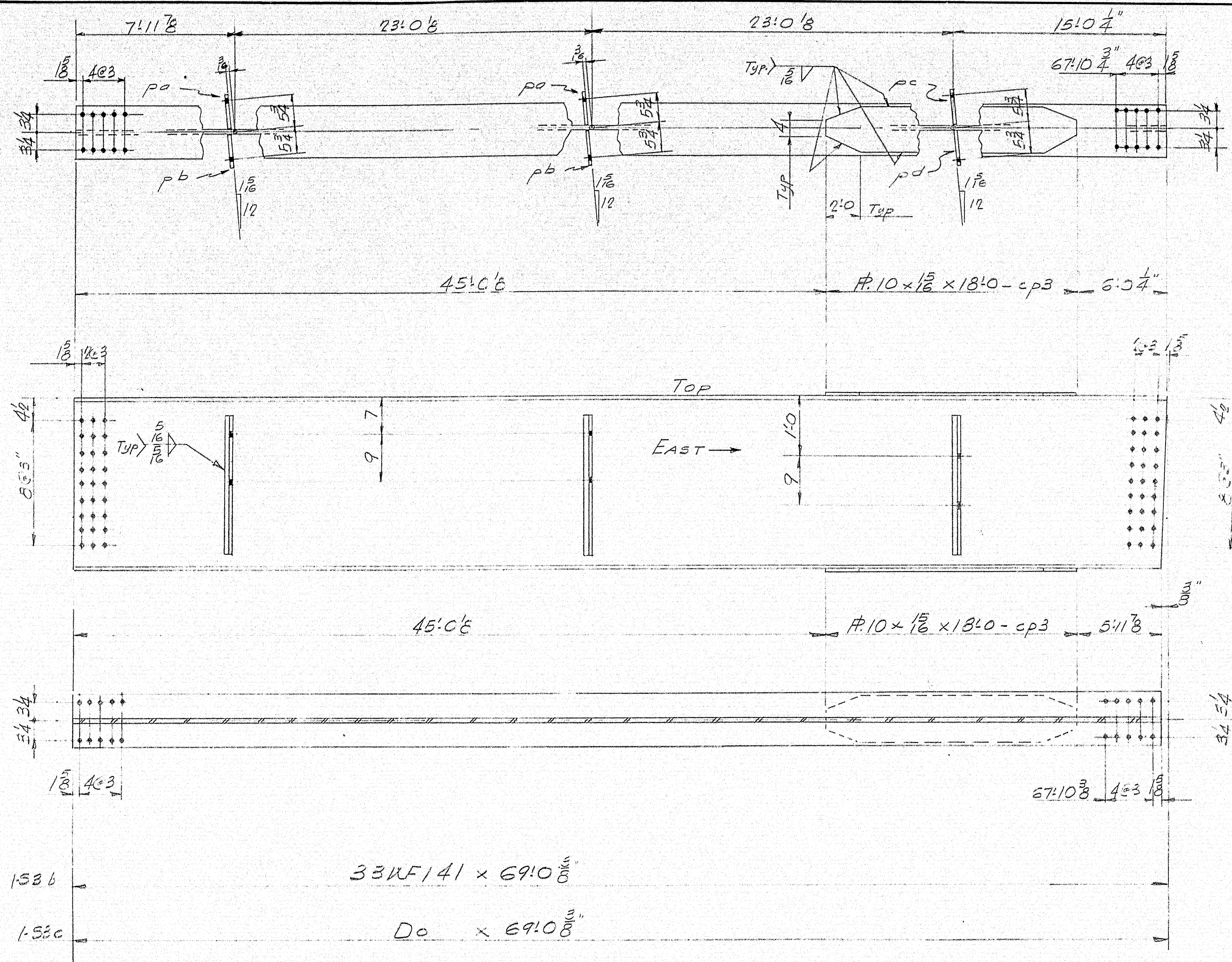
SHOP CONNECTIONS: Welded
FIELD CONNECTIONS: Welded
HOLES: 1/8\"/>

SHIP		BILL OF MATERIAL				DWG. NO. 8-211-S12
MARK	NO.	MARK	SHAPE	LENGTH	WT.	REMARKS
ED1 ^R	2		ASSEMBLY	12'2 3/8"		Scale Weight
ED1 ^L	2		Do	12'2 3/8"		Scale Weight
PA	4		Bar 4x8	0'7"		
	4	al ^R	8x6x3/4	12'1 1/2"		
	4	al ^L	Do	12'1 1/2"		
	28	ba	#20x1"	12'2 3/8"		Checkered Pl.
	52	bb	Do	1'5"		
	48	bc	Do	1'0"		
	24	bd	Do	0'10"		
	4	be	Bar 4x8	0'6"		
	224	Side	3/8" M. BOLTS	0'24"		
FIELD	4		3/8" M. BOLTS	0'12"		
Detailed on sheet 513						
ED2	2		ASSEMBLY	1'6 1/2"		Scale Weight
ED3	2		Do	1'6 1/2"		Scale Weight
	2	p2	#12x3/8	1'6 1/2"		Checkered Pl.
	2	p3	#12x3/8	1'5 1/2"		Checkered Pl.
	4	p4	#12x3/8	1'0"		
	2	p5	#12x3/8	1'5 1/2"		Checkered Pl.
	2	p6	#12x3/8	1'6 1/2"		Checkered Pl.
	4	u2	4x4x3/8	1'4 1/2"		
	4	u3	Do	1'5 3/8"		
	28	bf	Bar 2x3	0'8"		
Item 702-103						

ROADWAY EXPANSION DAM
Bancroft & Martin Holdings Mills Company
South Portland, Maine
TOWN FARM ROAD BRIDGE
SIDNEY, MAINE
CUSTOMER CLANCHETTE BROS.
DESIGNER MAINE S.H.C. BRIDGE DIV.
ORDER NO. 3709 DWG. NO. 8-211-S12

DRAWN	8-15-58 JRF
REVISION	9-2-58 JRF
REVISION	
REVISION	





SHIP		BILL OF MATERIAL					DWG. NO. 8-211-S7
MARK	NO.	MARK	SHAPE	LENGTH	WT.	WT. PER FOOT	REMARKS
* 53b	1		33WF141	69'10 3/8"		2.	
* 53c	1		Do	67'10 3/8"		2.	
	4	cp3	#10 x 1/2"	13'0"		152.	
	4	pa	#7 x 3/8"	2'3"			Detailed on Sh. S4
	4	pb	Do	2'3"			do do
	2	pc	Do	2'3"			do do
	2	pd	Do	2'3"			do do
232 LBS. 3 LBS. 1							1155 LBS.
* Structural Steel							
ASTM Specification A373							

SHOP CONNECTIONS: Welded
 FIELD CONNECTIONS: 3" HAS-BOLTS - Welded
 HOLES: 1/8" unless noted
 PAINT: Per State of Maine - see # 10 note 1.

See GENERAL NOTES Sheet S2

SPAN 3 - STRINGER DETAILS

Bancroft & Manton Holdings, Mills Company
 South Portland, Maine

TOWN FARM ROAD BRIDGE
 SIDNEY, MAINE

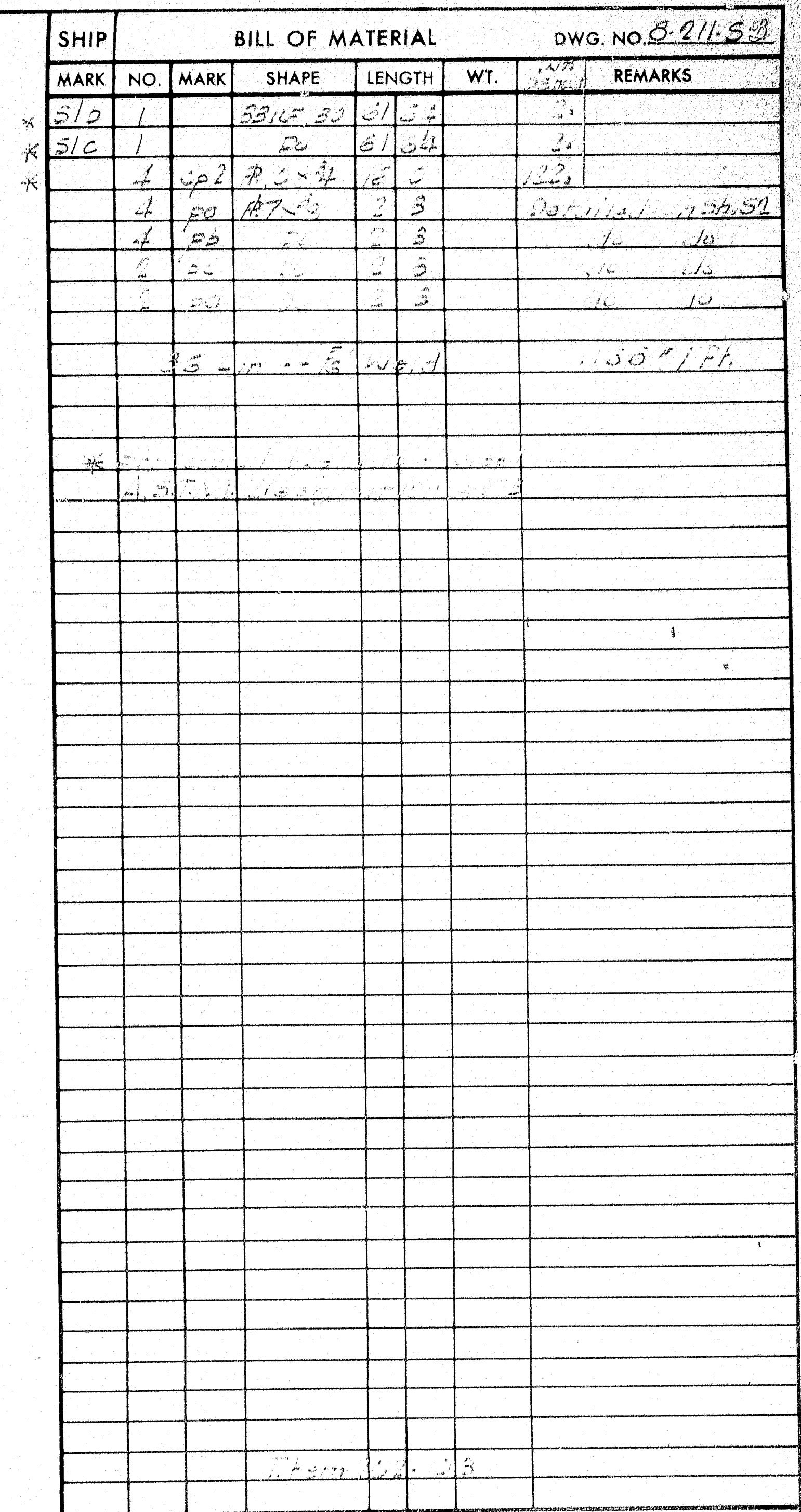
CUSTOMER: CLANCHETTE BROS.

DESIGNER: MAINE S.H.C. BRIDGE DIV.

ORDER NO. 3709

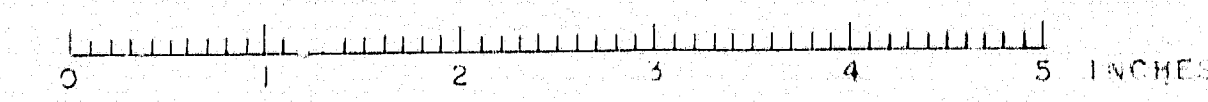
DWG. NO. 8-211-S7

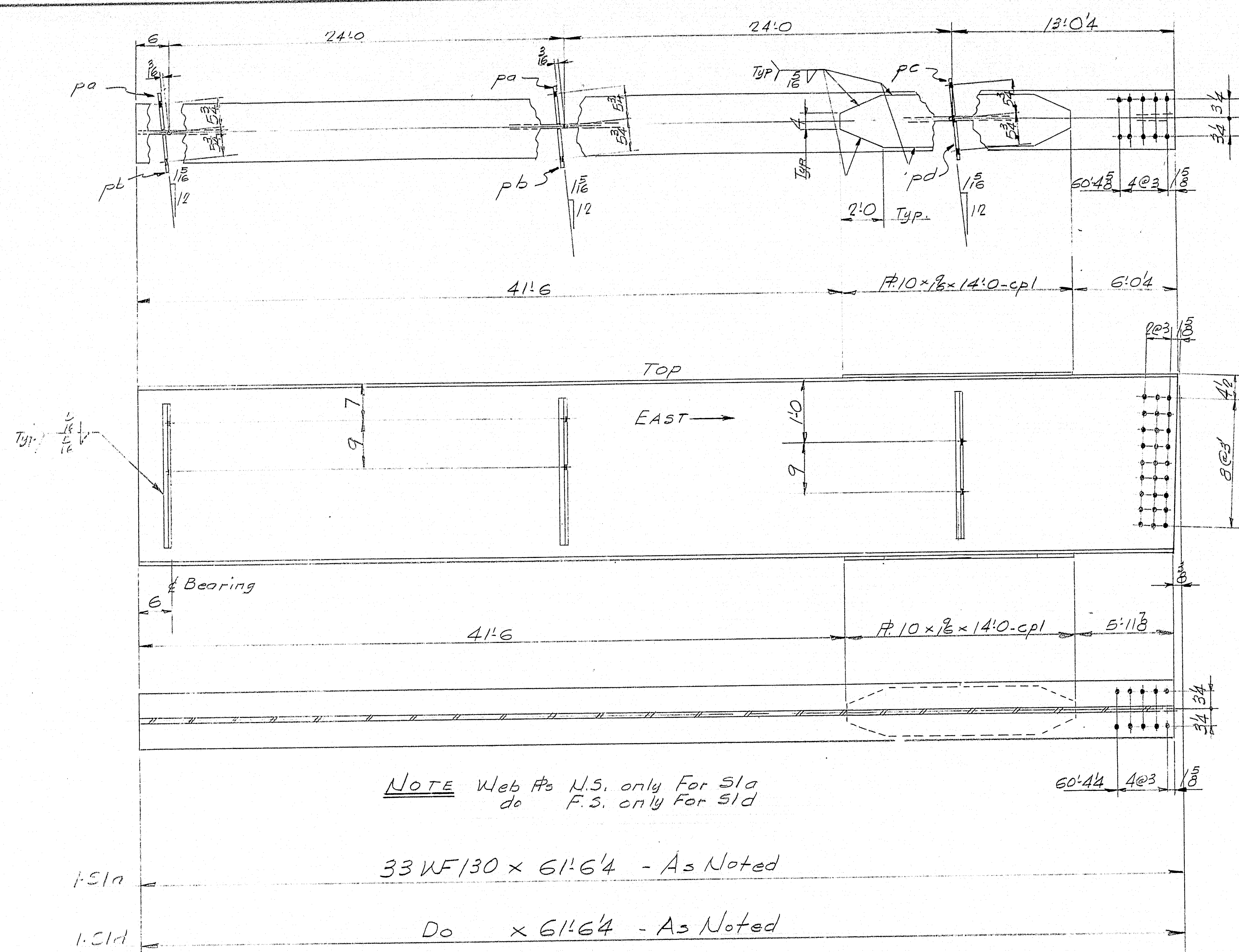
DRAWN	8-12-58 JRF
REVISION	
REVISION	
REVISION	



PLAN 1 - STEINSEER DETAILS	
Bancroft & Martin, Rollins, Webb & Company South Portland 7, Maine	
TOWN FARM ROAD BRIDGE SIDNEY, MAINE	
CUSTOMER	CLANCHETTE BROS.
DESIGNER	MAINE S.H.C. BRIDGE DIV.
ORDER NO.	3709
DWG. NO.	8-211-53

DRAWN	<u>B-11-58 J.P.F.</u>	CUSTOMER	<u>GLANCHETTE BROS.</u>	
REVISION		DESIGNER	<u>MAINE S.H.C. BRIDGE DIV.</u>	
REVISION		ORDER NO.	<u>3709</u>	DWG. NO. <u>8-211-53</u>
REVISION				

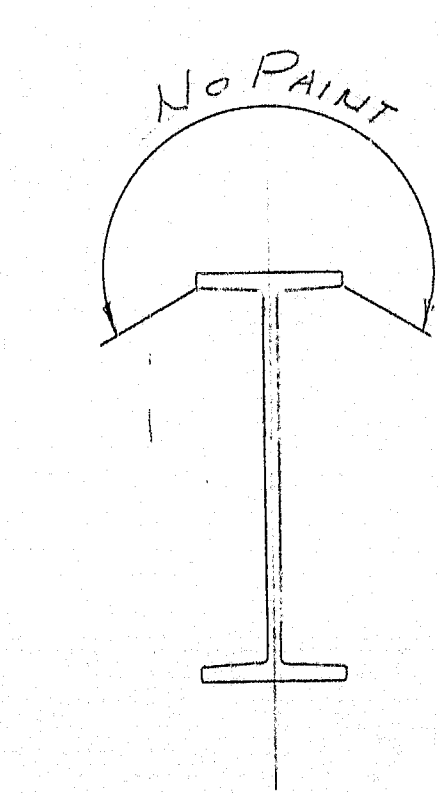




NOTE Web #s U.S. only For S1a
do F.S. only For S1d

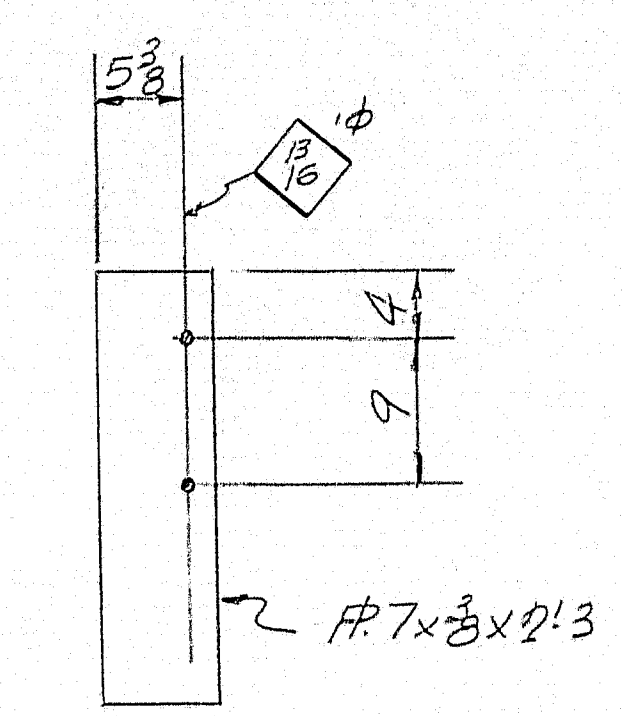
33WF130 x 61'6 1/4 - As Noted

Do x 61'6 1/4 - As Noted

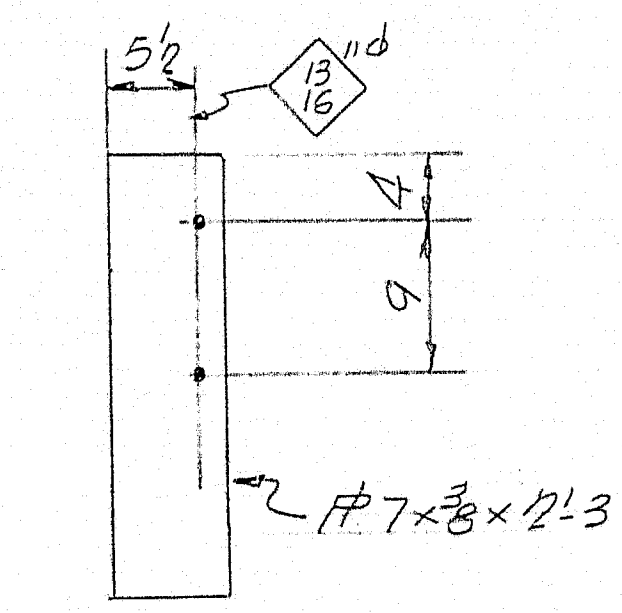


TYP. SECT. ALL STRINGERS
Cover #s not shown.

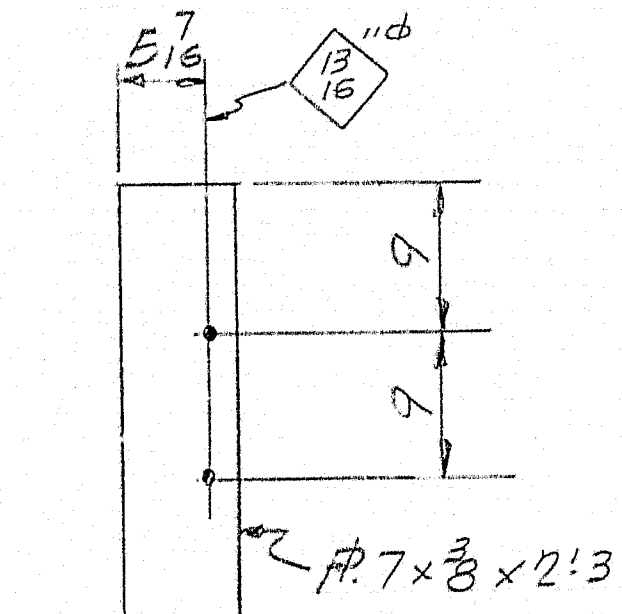
- GENERAL NOTES
- 1.) Stringers & Cover Plates to be structural weldable steel A.S.T.M. designation A373.
 - 2.) Holes in field splices of continuous beams to be sub-punched (or sub-drilled) and reamed while assembled in the shop and connecting parts to be match marked & bolted for shipment.
 - 3.) $\frac{1}{16}$ " Holes are for $\frac{3}{4}$ " H.T. Tensile Bolts, they are to be free from burrs and there shall be no paint on any surfaces within "3" of such open holes.
 - 4.) $\frac{1}{16}$ " Holes are for $\frac{3}{4}$ " M. Bolts (Temp. erection bolts), there shall be no paint on any surfaces within "5" of such open holes.
 - 5.) Bearing Pedestals are to be field welded to stringers.



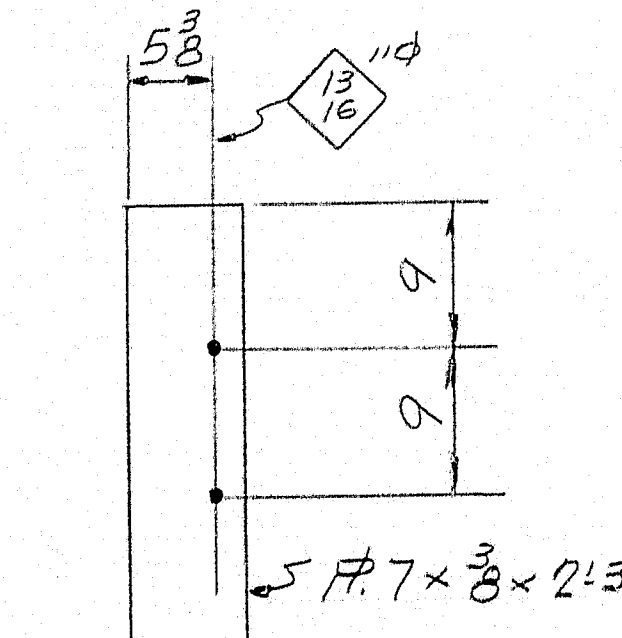
pa - Detail



pb - Detail



pc - Detail



pd - Detail

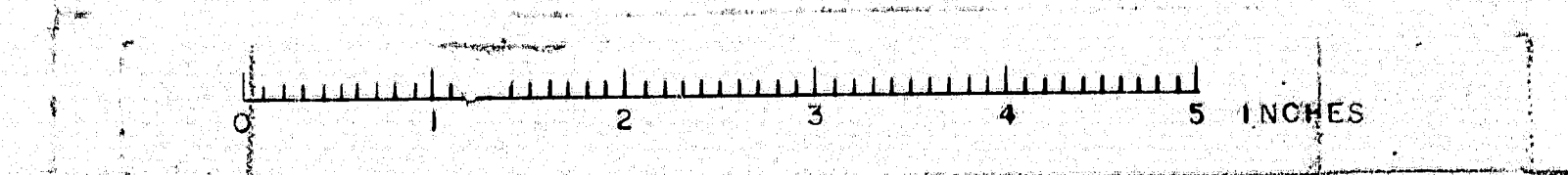
SHIP		BILL OF MATERIAL				DWG. NO. 8-211-52	
MARK	NO.	MARK	SHAPE	LENGTH	WT.	REMARKS	
* S1a	1		33WF130	61'6 1/4		2.	
* S1d	1		Do	61'6 1/4		2.	
	4	cpl	#10 x 1/2	14'0		92.	
	2	pa	#7 x 3/8	2'3			
	2	pb	Do	2'3			
	1	pc	Do	2'3			
	1	pd	Do	2'3			
143 Lin. ft. 5/16" Weld.							166 #/ft.
* Structural Weldable steel ASTM. designation A373							
Thru 700-103							

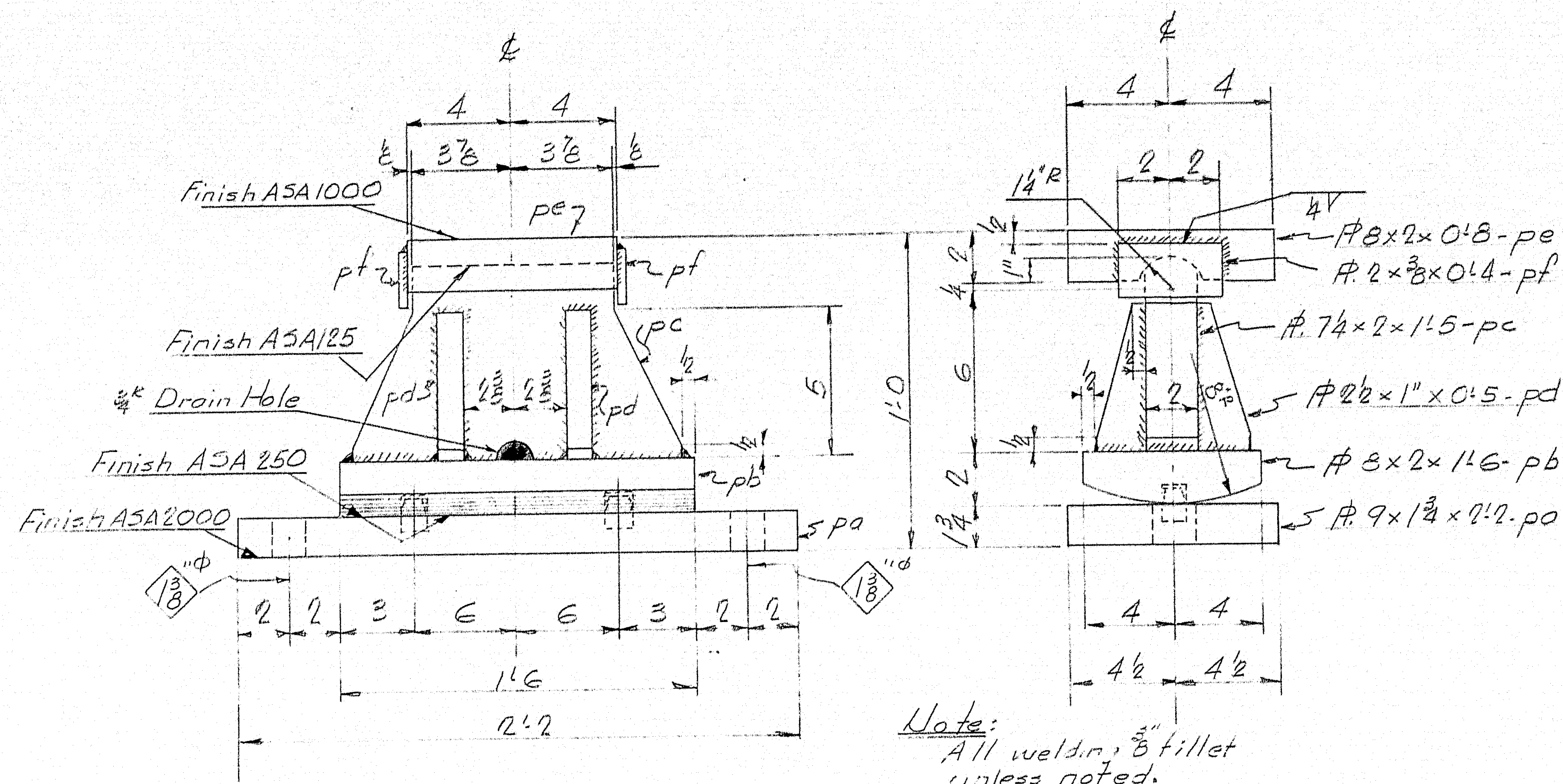
SHOP CONNECTIONS: Matched
FIELD CONNECTIONS: 3" x 4.5" Bolts Welded
HOLES: 1/16" unless noted
PAINT: For State of Maine Specs
as noted.

See "GENERAL NOTES" This sheet

SPAN-STRINGER DETAILS	
Bancroft & Martin Rolling Mills Company South Portland, Maine	
TOWN FARM ROAD BRIDGE SIDNEY, MAINE	
CUSTOMER: CLARENCE BEGS. DESIGNER: MAINE S.H.C. BRIDGE DIV.	
ORDER NO. 3709	DWG. NO. 8-211-52

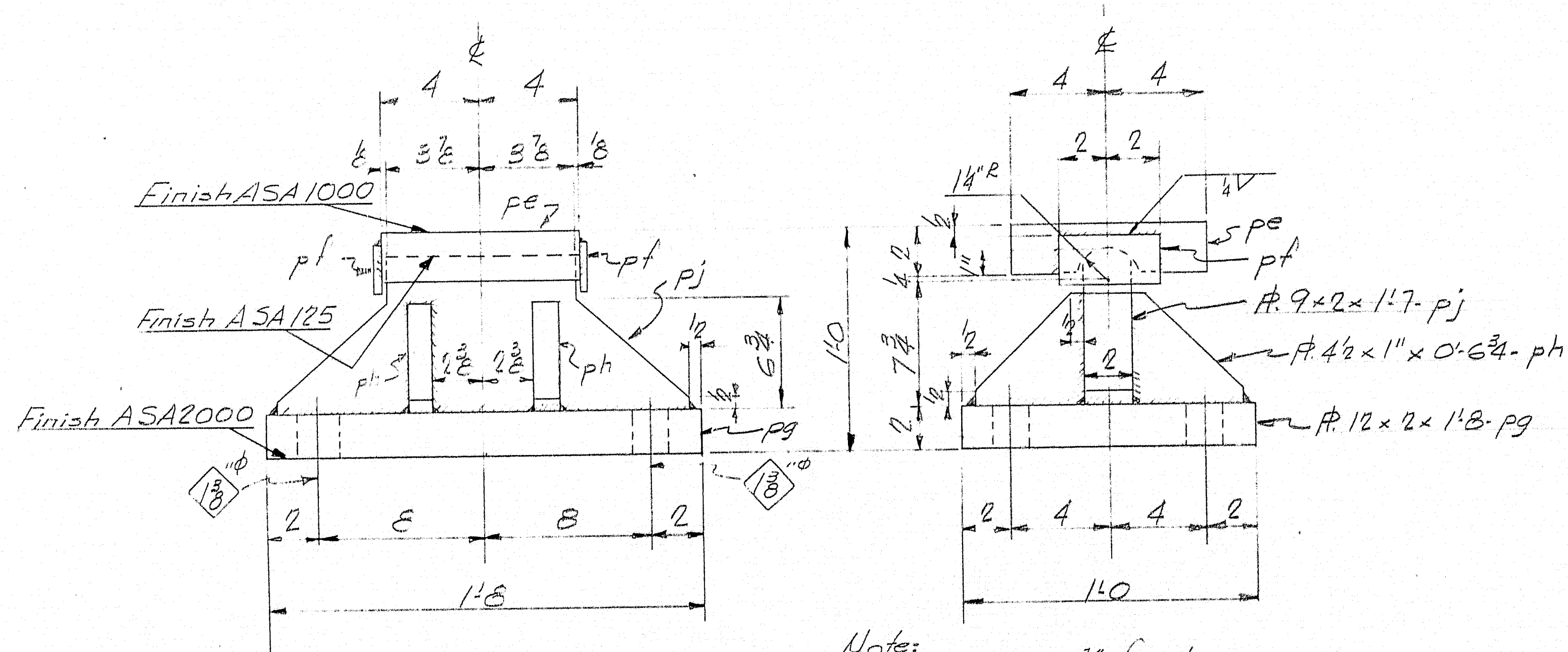
DRAWN	8-11-58 J.P.F.
REVISION	9-2-58 J.P.F.
REVISION	
REVISION	





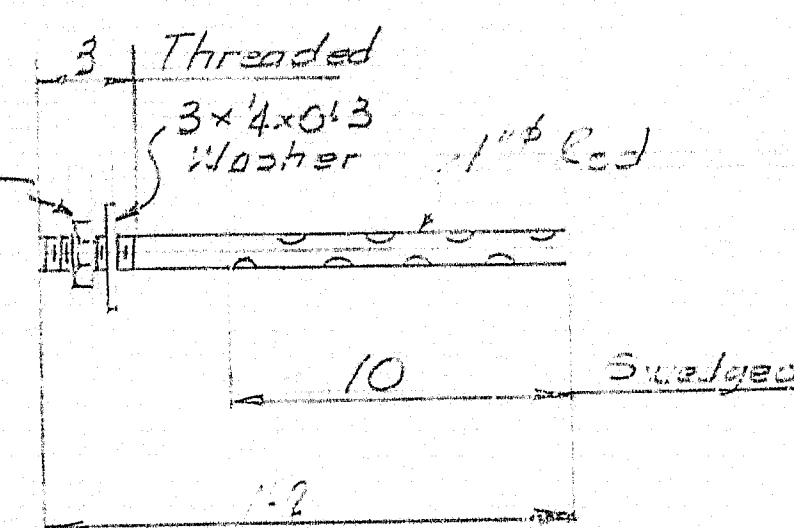
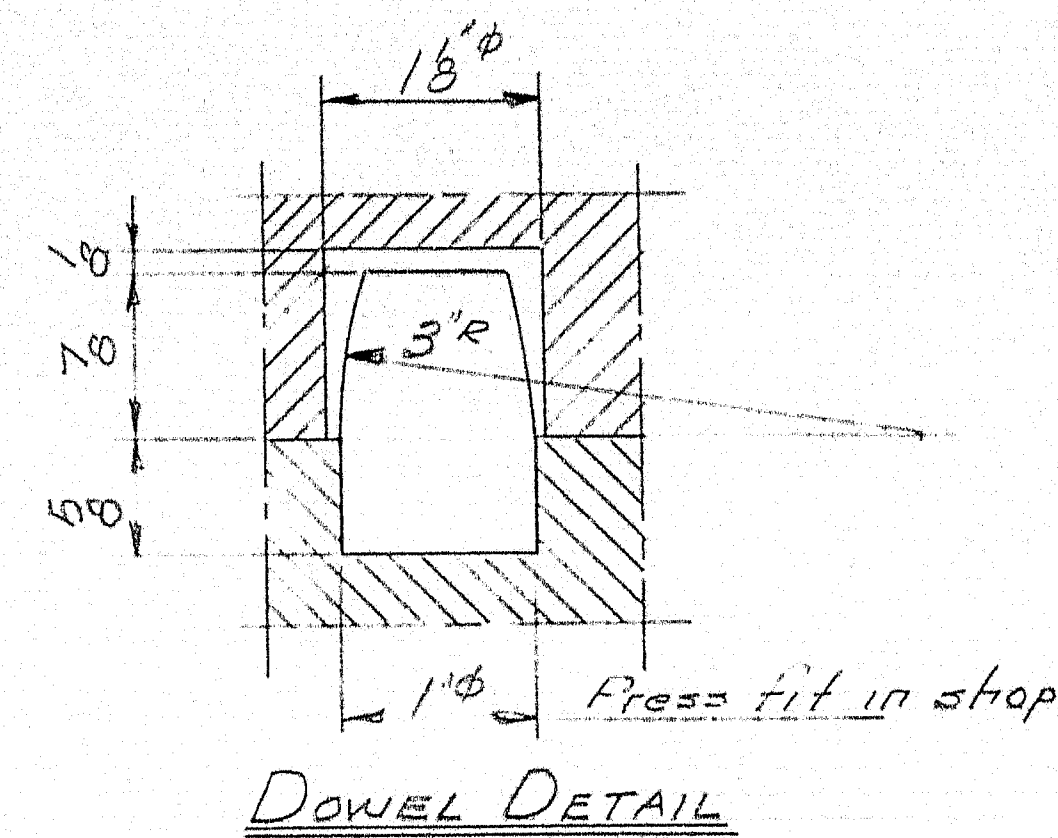
EXPANSION PEDESTAL

EPA-20 REG'D
Abutments & Piers 1, 2 & 4



FIXED PEDESTAL

FPA-4 REG'D
Pier #3



ANCHOR BOLTS

LB1-56 REG'D

NOTE: Pedestals to be field welded to stringers.

SHIP	MARK	NO.	MARK	SHAPE	LENGTH	WT.	REMARKS
EPA	20			2	2		5/8" W/1/2"
EPA	4			1	3		1/2" 1/2"
AB1	56			1	2		1/2" 1/2"
	20	pe		2	2		
	20	pb		1	5		
	20	pc		1	5		
	30	pd		2	5		
	24	pe		2	3		
	43	pf		2	4		
	4	pg		1	3		
	6	ph		2	3 1/2		
	4	pi		1	7		
	56	po		2	3 1/2		
	56	pe		2	3		
	40	pe		2	1 1/2		

SHOP CONNECTIONS: Welded
FIELD CONNECTIONS: Welded
HOLES: As Noted.
PAINT: Per State of Maine Specs
Coat finished surfaces
w/white lead & tallow

PEDESTAL DETAILS

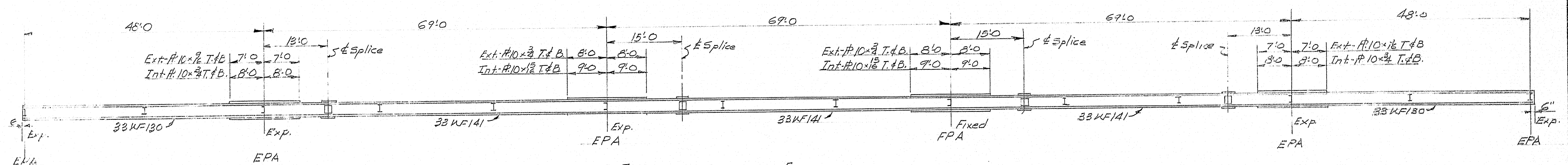
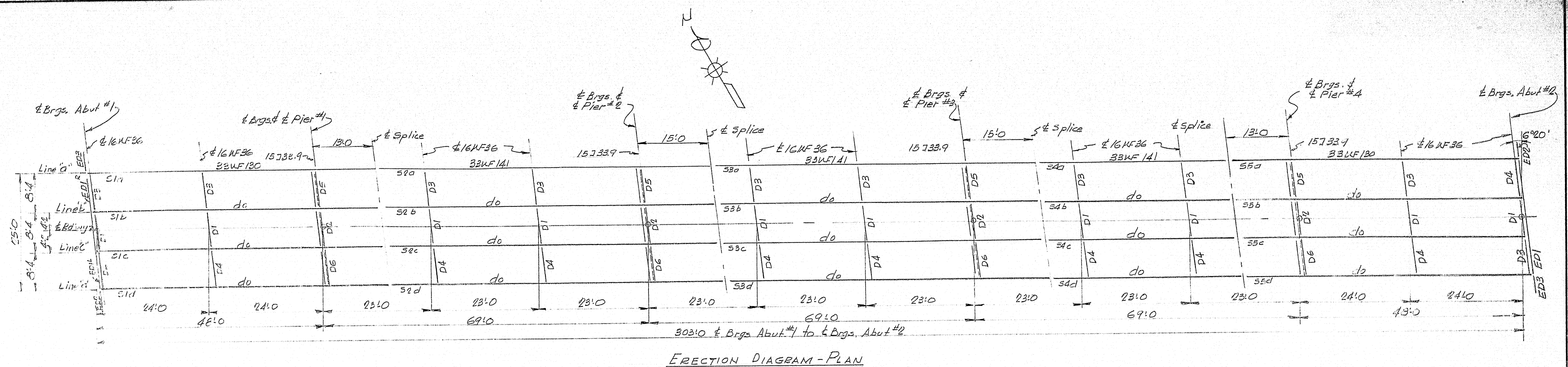
Bancroft & Martin Rolling Mills Company
South Portland 7, Maine

TO BE USED FOR
CONCRETE

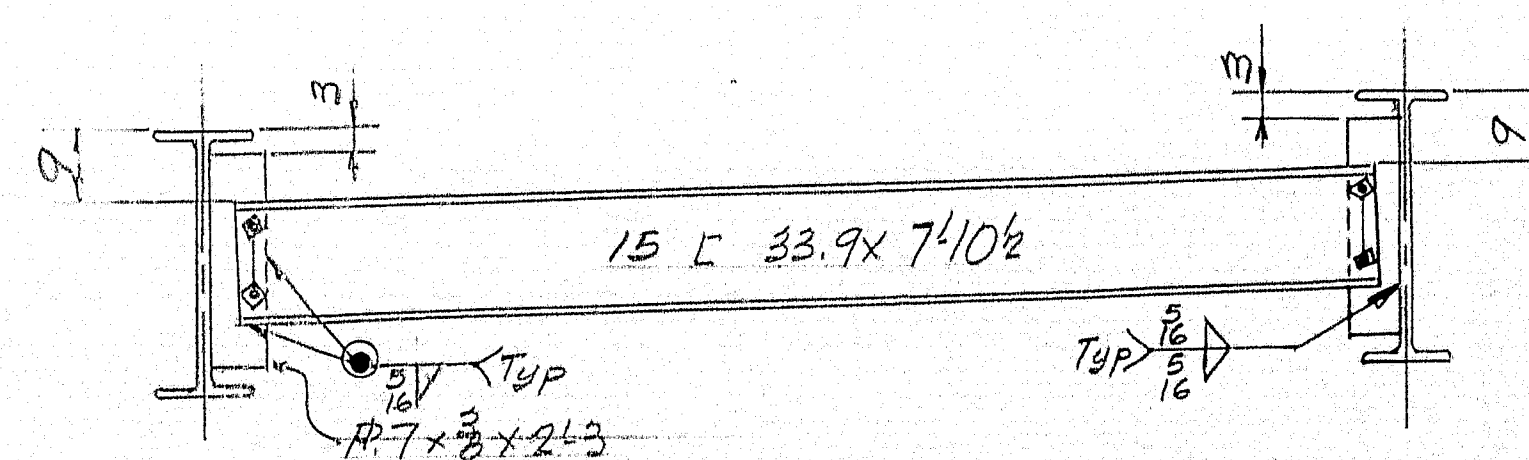
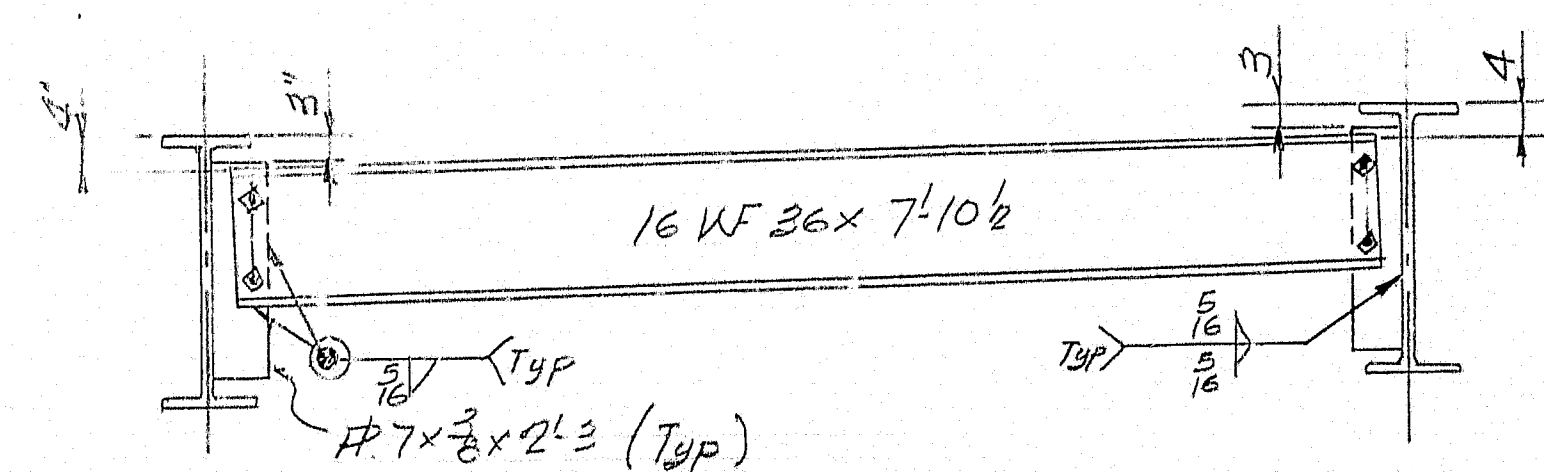
CUSTOMER: MAINE 3 H.C. BRIDGE DIV.
DESIGNER: MAINE 3 H.C. BRIDGE DIV.

ORDER NO. 3774 DWG. NO. 3-211-51

DRAWN	J.B. 53	D.P.F.
REVISION		
REVISION		
REVISION		



All dimensions horizontal.



At Piers Only

NOTES:
SHOP COUNT: 454
FIELD COUNT: 314 H.S. Boys &
464
PAINT: Per State of Maine
Specs.

DRAWN	8-10-58 J.P.F.	CUSTOMER	CLANCHETTE MOBE.
REVISION		DESIGNER	MAINE S.H.C. BEIDGE D.N.
REVISION		ORDER NO.	3709
REVISION		DWG. NO.	8-211-E1

0
1
2
3
4
5
6
7
8
9
10
11
12
13
14
15
16
17
18
19
20
21
22
23
24
25
26
27
28
29
30
31
32
33
34
35
36
37
38
39
40
41
42
43
44
45
46
47
48
49
50
51
52
53
54
55
56
57
58
59
60
61
62
63
64
65
66
67
68
69
70
71
72
73
74
75
76
77
78
79
80
81
82
83
84
85
86
87
88
89
90
91
92
93
94
95
96
97
98
99