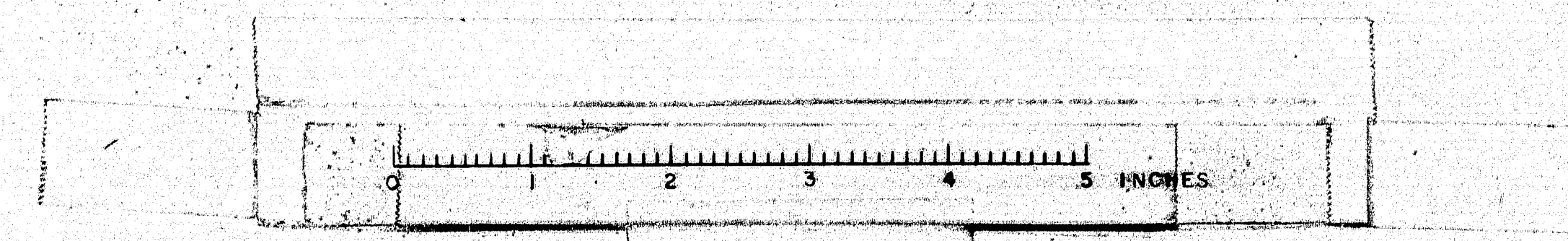
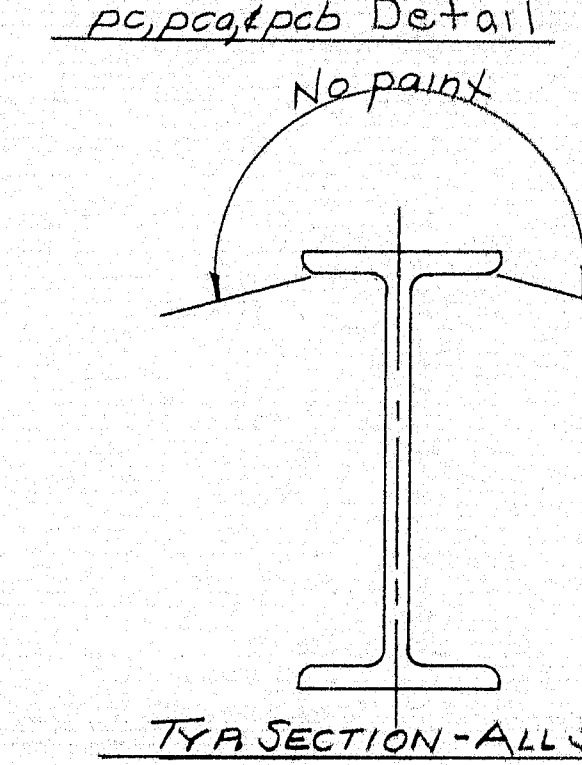
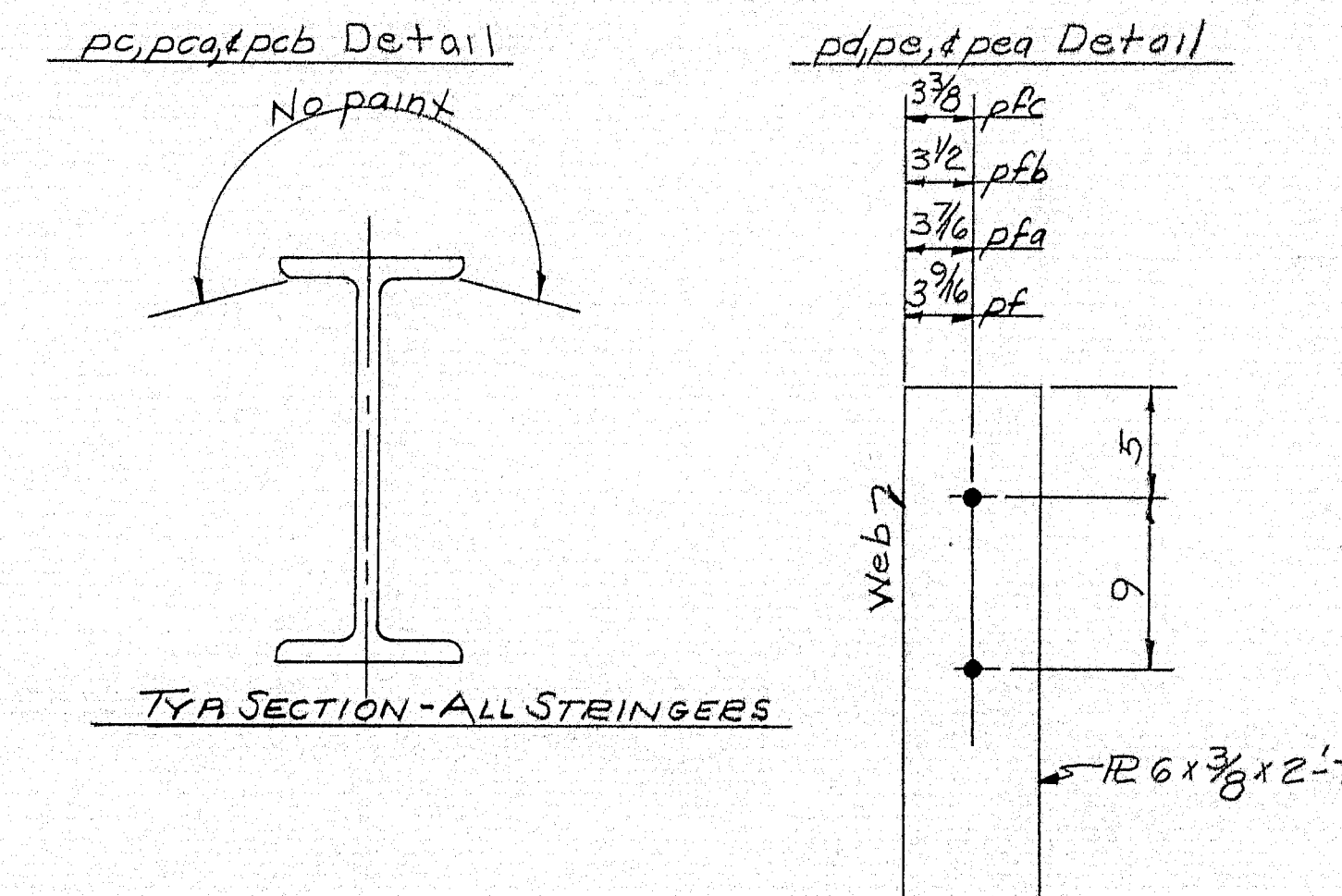
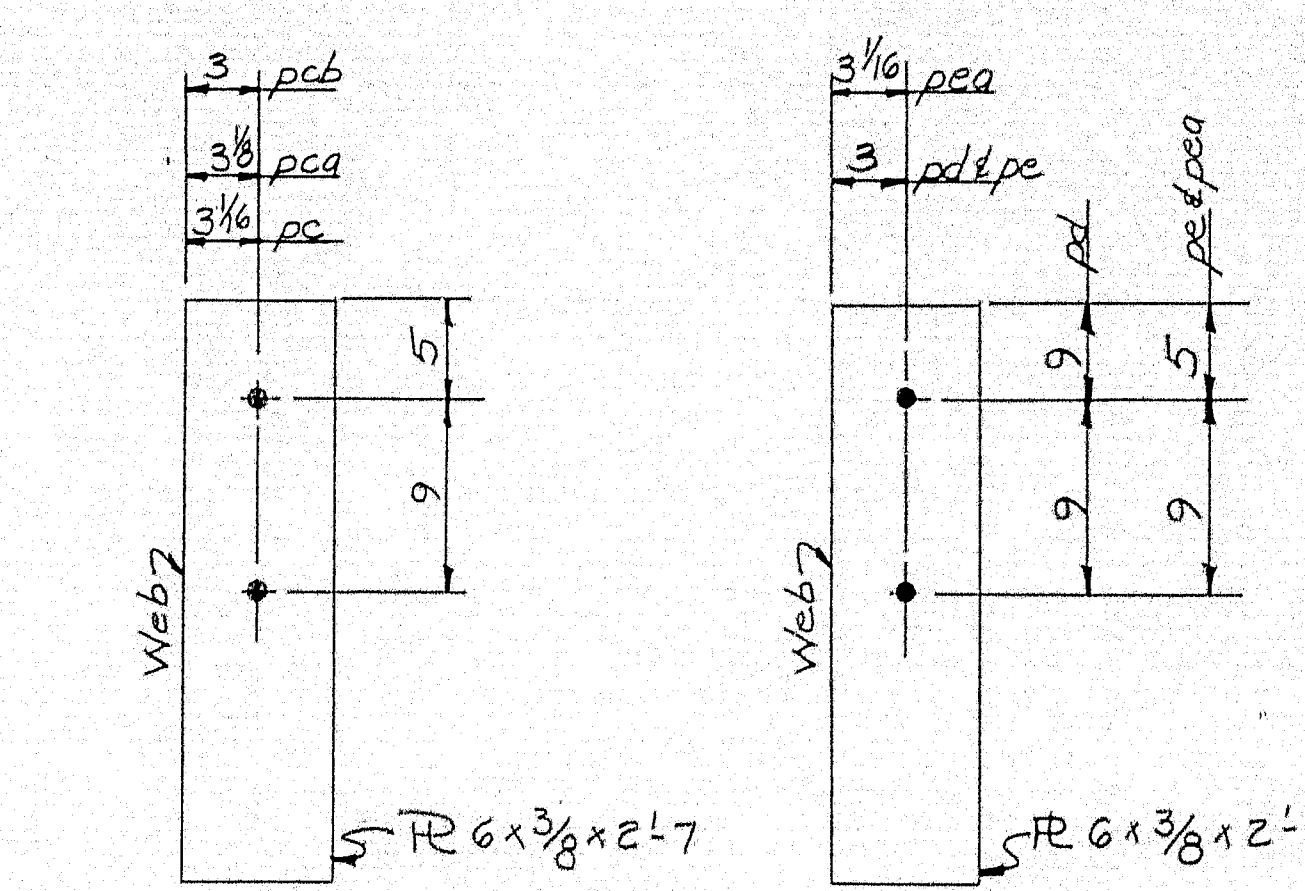
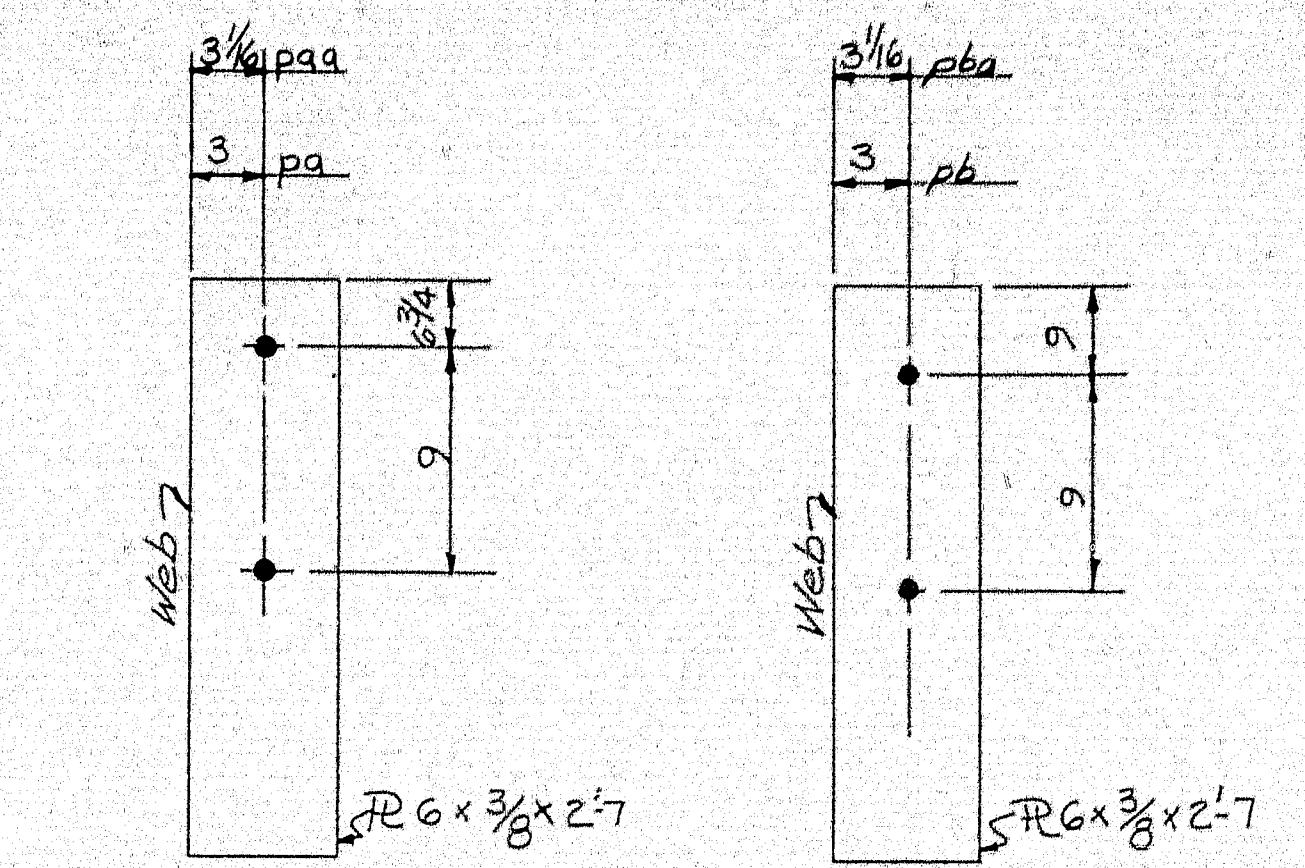
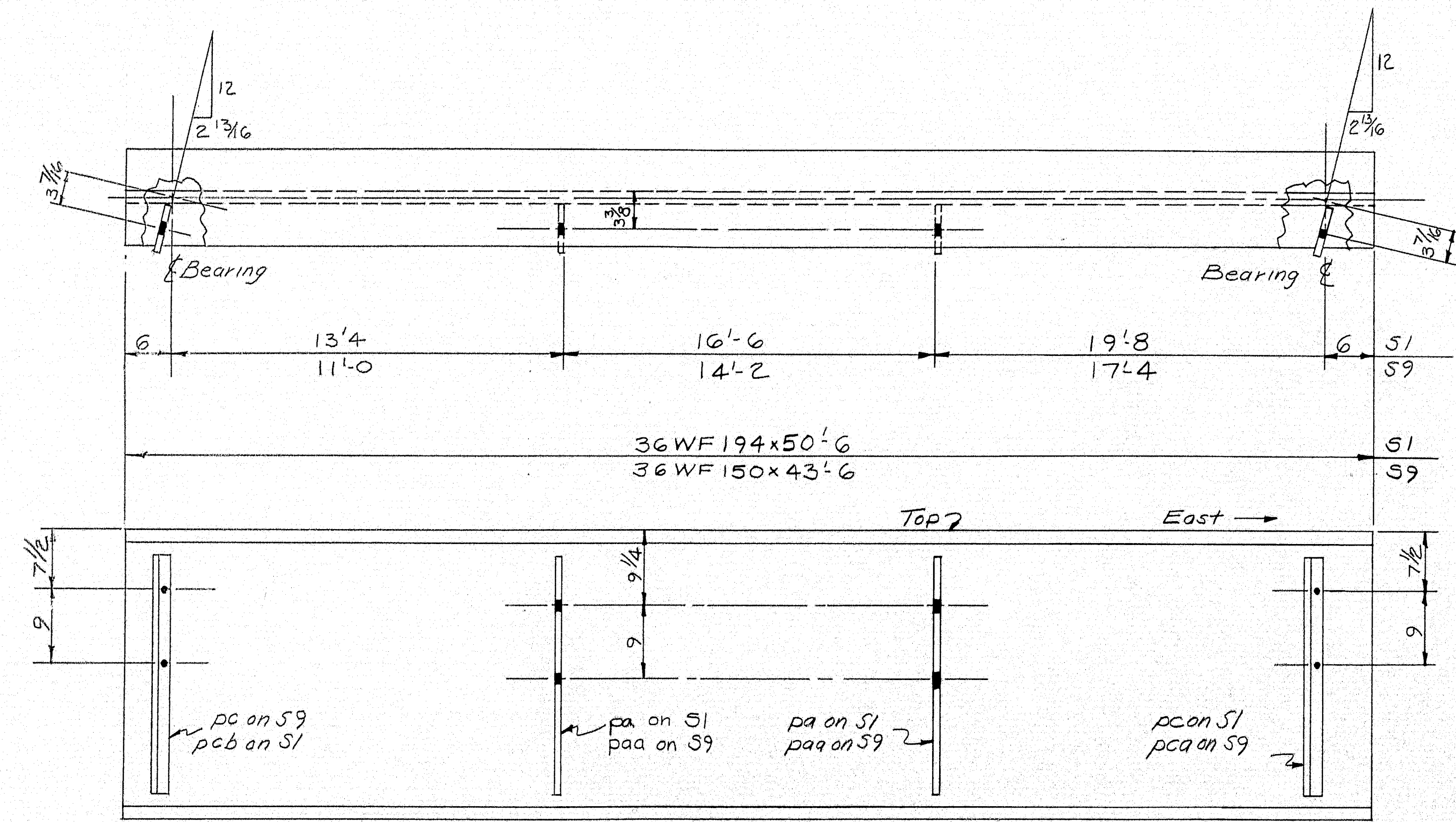
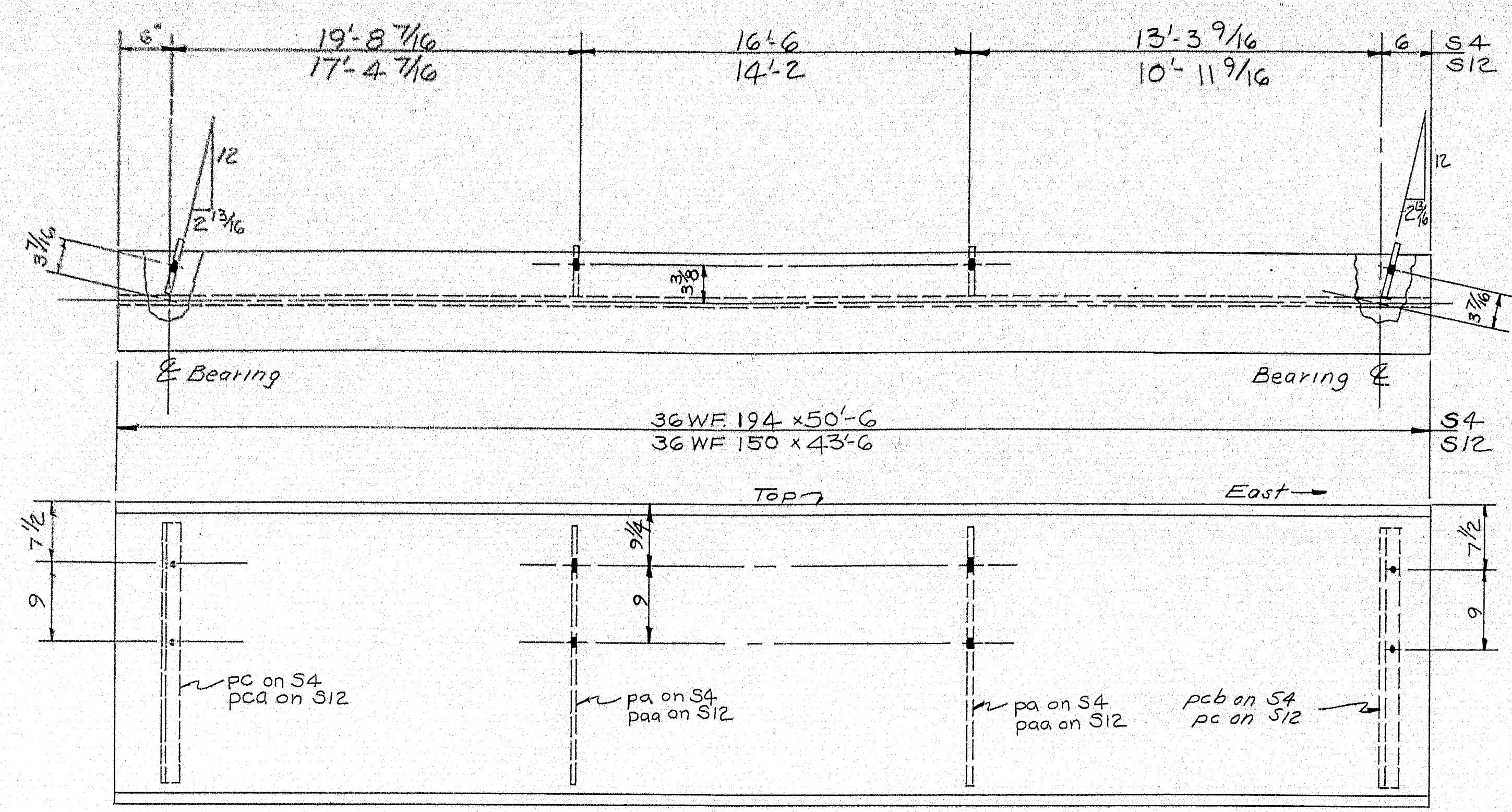


NOTES:

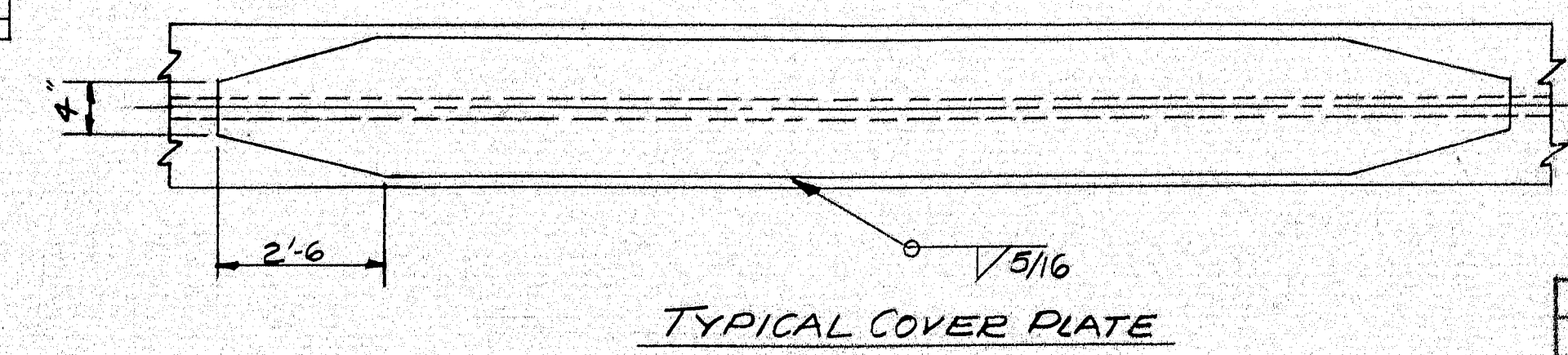
ERECTON DIAGRAM	
Bancroft & Martin, Portland, Maine	
South Portland, Maine	
LYONS ROAD BRIDGE	
SIDNEY, MAINE	
CUSTOMER: CLANCHETTE BROTHERS	
DESIGNER: MAINE S.H.C. BRIDGE DIV.	
ORDER NO. 3877	DWG. NO. 8-311-E1

72-148





GENERAL NOTES:
 1) For beams with welded cover plates, both beams & cover plates shall be structural weldable steel A.S.T.M. designation A-373.
 2) 1 3/16" holes are for 3/4" M. Bolts (Temp. erection bolts), there should be no paint within 5" of such holes.
 3) Bearings to be field welded to stringers.



SHIP		BILL OF MATERIAL				DWG. NO. 8-311-52	
MARK	NO.	MARK	SHAPE	LENGTH	WT.	WT. DEDUCT	REMARKS
S1	1		36WF194	50	6		
S2	1		36WF220	50	6		
S3	1		do	50	6		
S4	1		36WF194	50	6		
S5	1		36WF150	59	6		ASTM-A373
S6	1		do	59	6		A373
S7	1		do	59	6		A373
S8	1		do	59	6		A373
S9	1		do	43	6		
S10	1		36WF170	43	6		
S11	1		do	43	6		
S12	1		36WF150	43	6		
S13	1		do	58	0		A373
S14	1		do	58	0		A373
S15	1		do	58	0		A373
S16	1		do	58	0		A373
S17	1		do	59	6		A373
S18	1		do	59	6		A373
S19	1		do	59	6		A373
S20	1		do	59	6		A373
S21	1		do	44	0		
S22	1		36WF170	44	0		
S23	1		do	44	0		
S24	1		36WF150	44	0		
	4	pa	RGx3/8	2	7		
	16	pb	do	2	7		
	14	pc	do	2	7		
	2	cd1	RGx9/16	32	0	57	A373
	4	cp2	RGx9/16	33	0	149	A373
	4	cp3	RGx10x1	38	0	204	A373
	2	cp4	RGx11x13/16	37	0	97	A373
	8	pd	RGx3/8	2	3		
	4	pe	do	2	3		
	14	pf	RGx3/8	2	7		
All Steel ASTM Designation A-7 Unless Noted							
	1591	1/16	Cont. Weld				166 #/lin ft.
	20	paa	RGx3/8	2	7		
	24	pba	do	2	7		
	8	pca	do	2	7		
	6	pcb	do	2	7		
	14	pda	do	2	7		
	4	pfb	do	2	7		
	4	pfc	do	2	7		
	4	pea	do	2	3		

SHOP CONNECTIONS: Welded 3/16 fillet
 FIELD CONNECTIONS: Welded & Bolted
 HOLES: 1 3/16" ϕ
 PAINT: Per State of Maine Specs & as noted.

STEINGER DETAILS

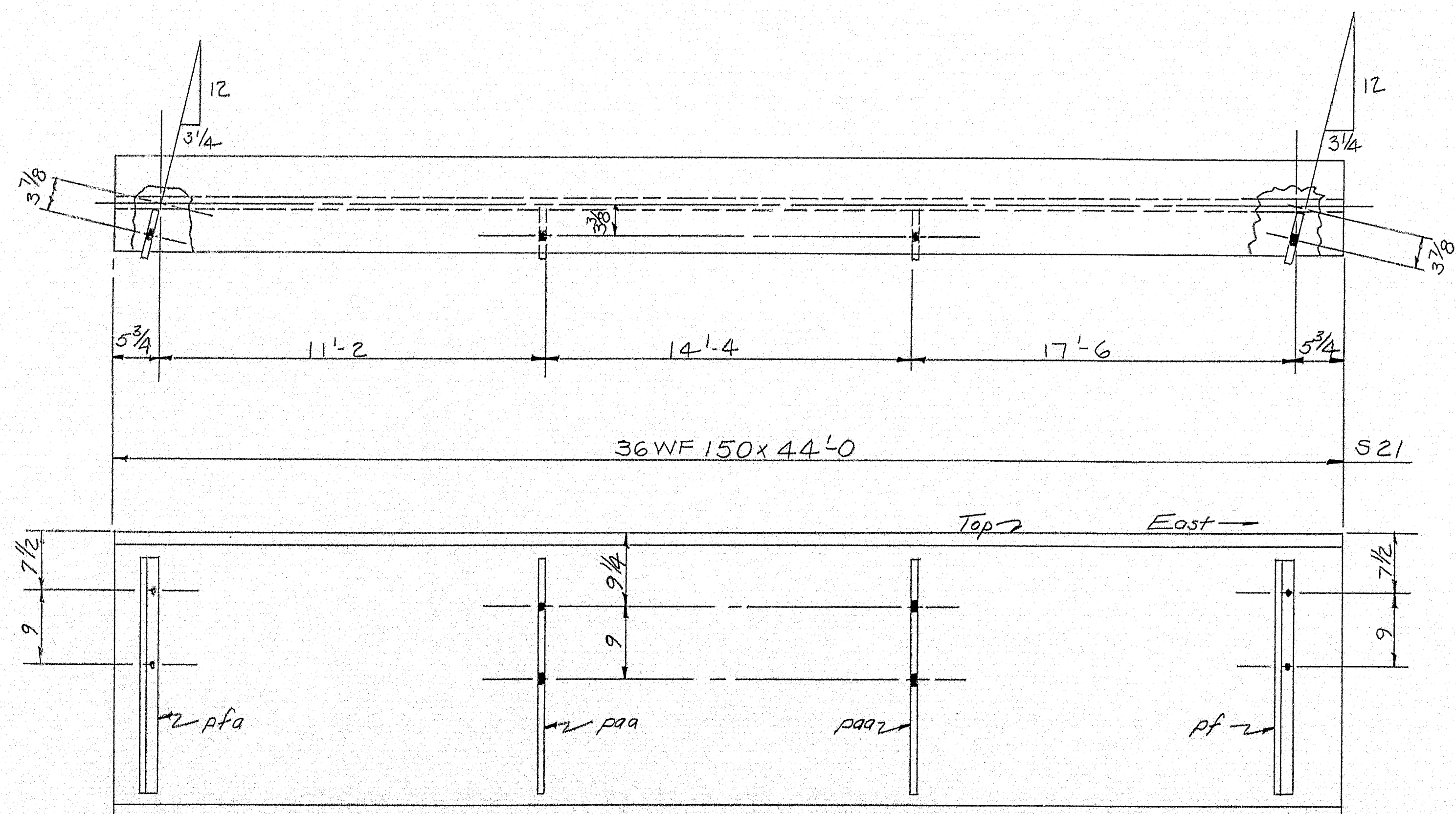
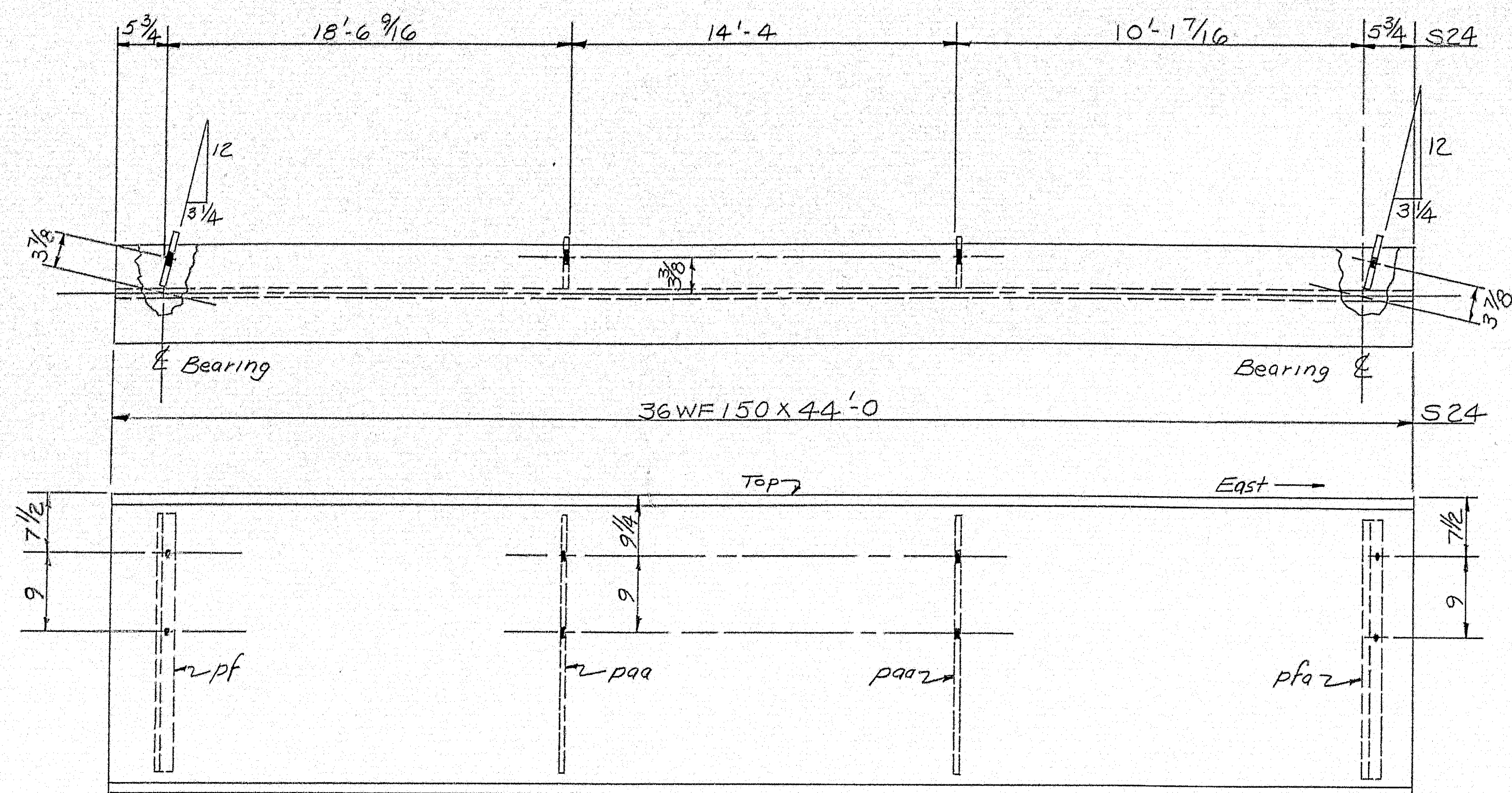
Barnes & Martin Holdings Mfg. Company
 South Portland, Maine

LYONS ROAD BRIDGE
 SIDNEY, MAINE

CUSTOMER: LANCHETTE BROTHERS
 DESIGNER: MAINE S.H.C. BRIDGE DIV.

ORDER NO. 3877 DWG. NO. 8-311-52

DRAWN	9-8-58	FBM
REVISION		
REVISION		
REVISION		

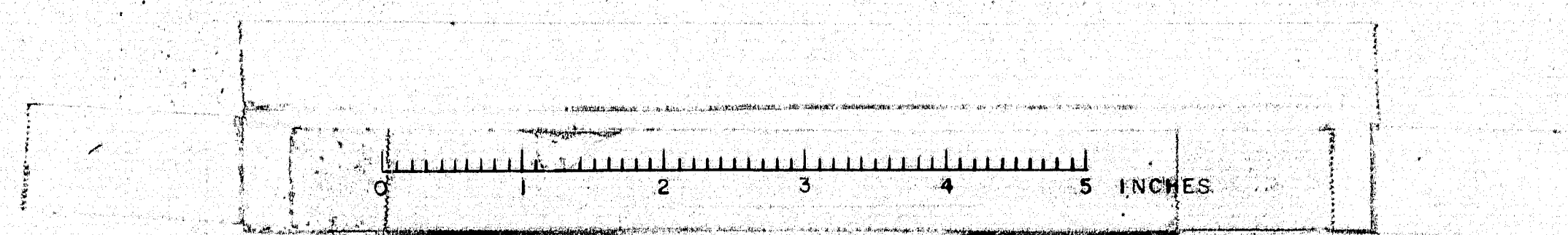


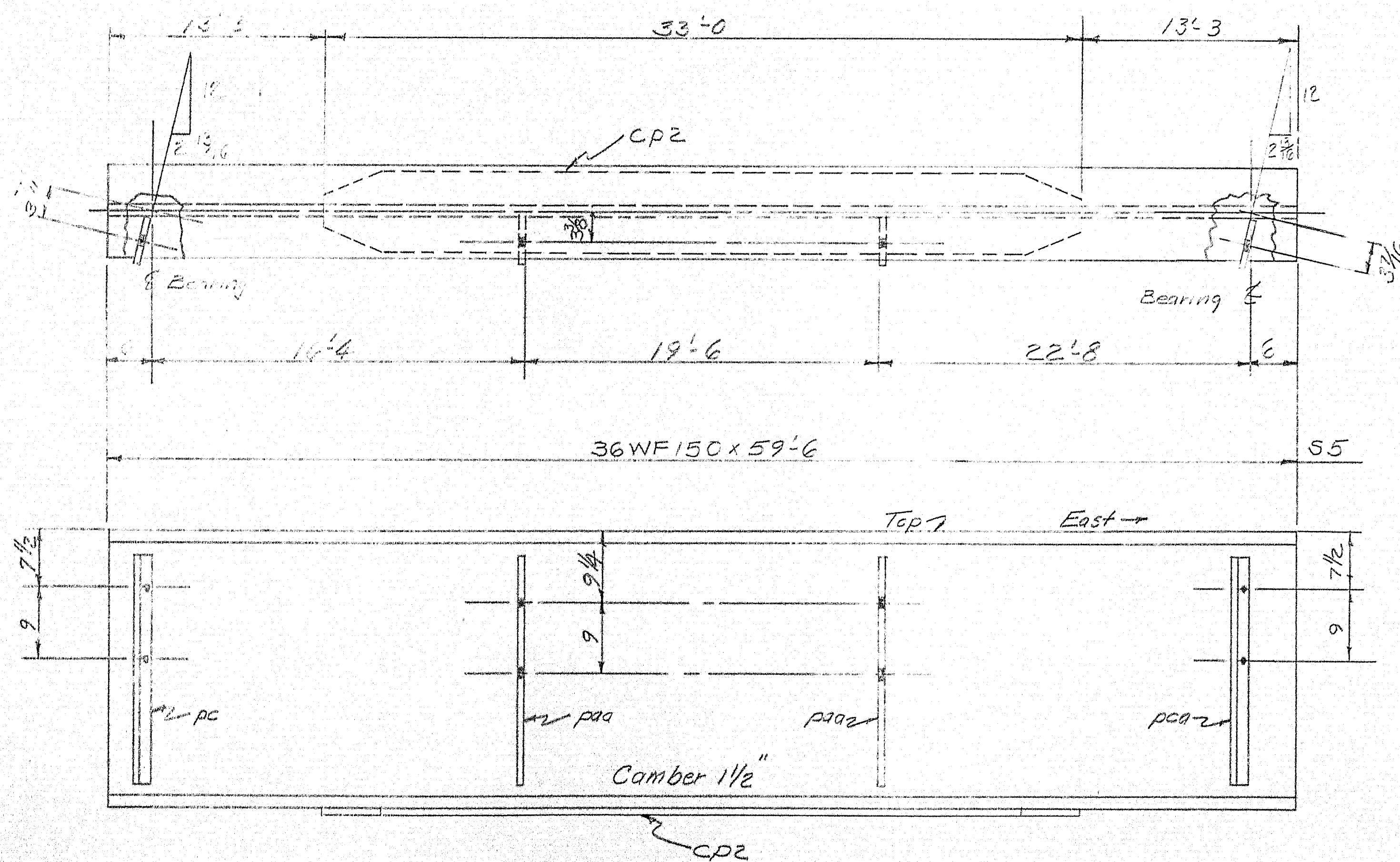
NOTES: See Dwg. B-311-52 for typical details, Bill of Matl., & general notes.

STEINGER DETAILS	
Bancroft & Martin Rolling Mills Company	
South Portland 7, Maine	
LYONS ROAD BRIDGE	
SIDNEY, MAINE	
CUSTOMER <u>CIANCHETTE BROTHERS</u>	
DESIGNER <u>MAINE S.H.C. BRIDGE DIV.</u>	
ORDER NO. <u>3977</u>	DWG. NO. <u>B-311-54</u>

DRAWN	7-9-58	7-11
REVISION		
REVISION		
REVISION		

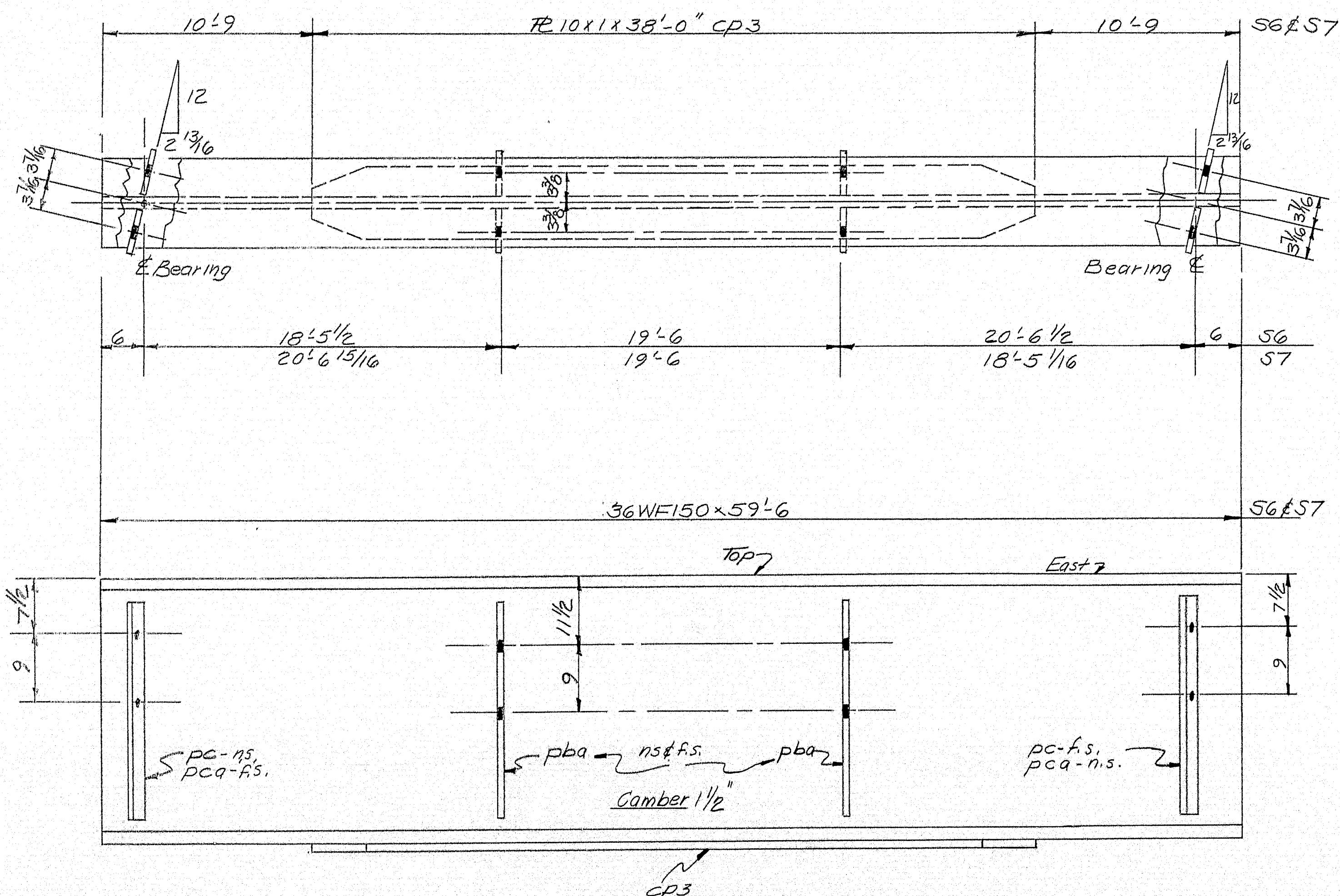
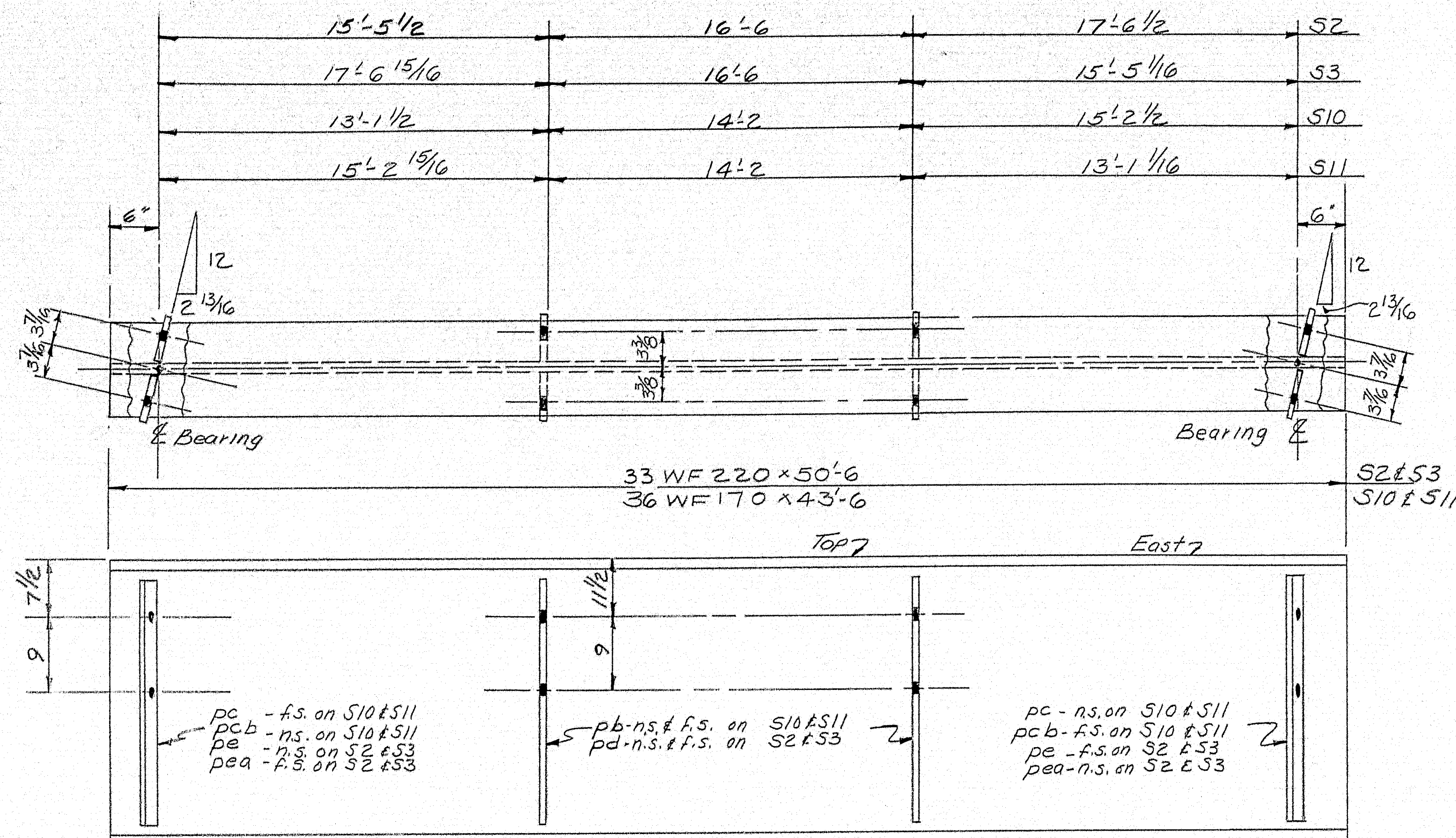
72-152





72-153

DRAWN		
REVISION		
REVISION		
REVISION		

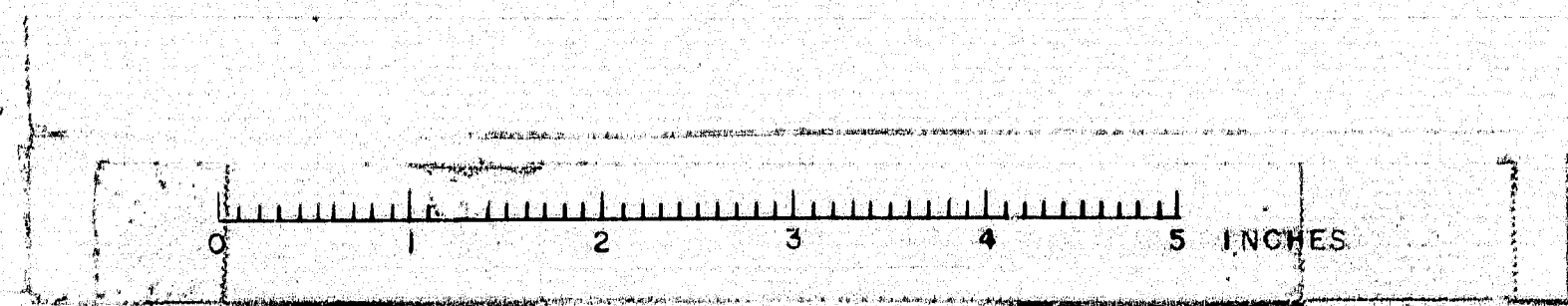


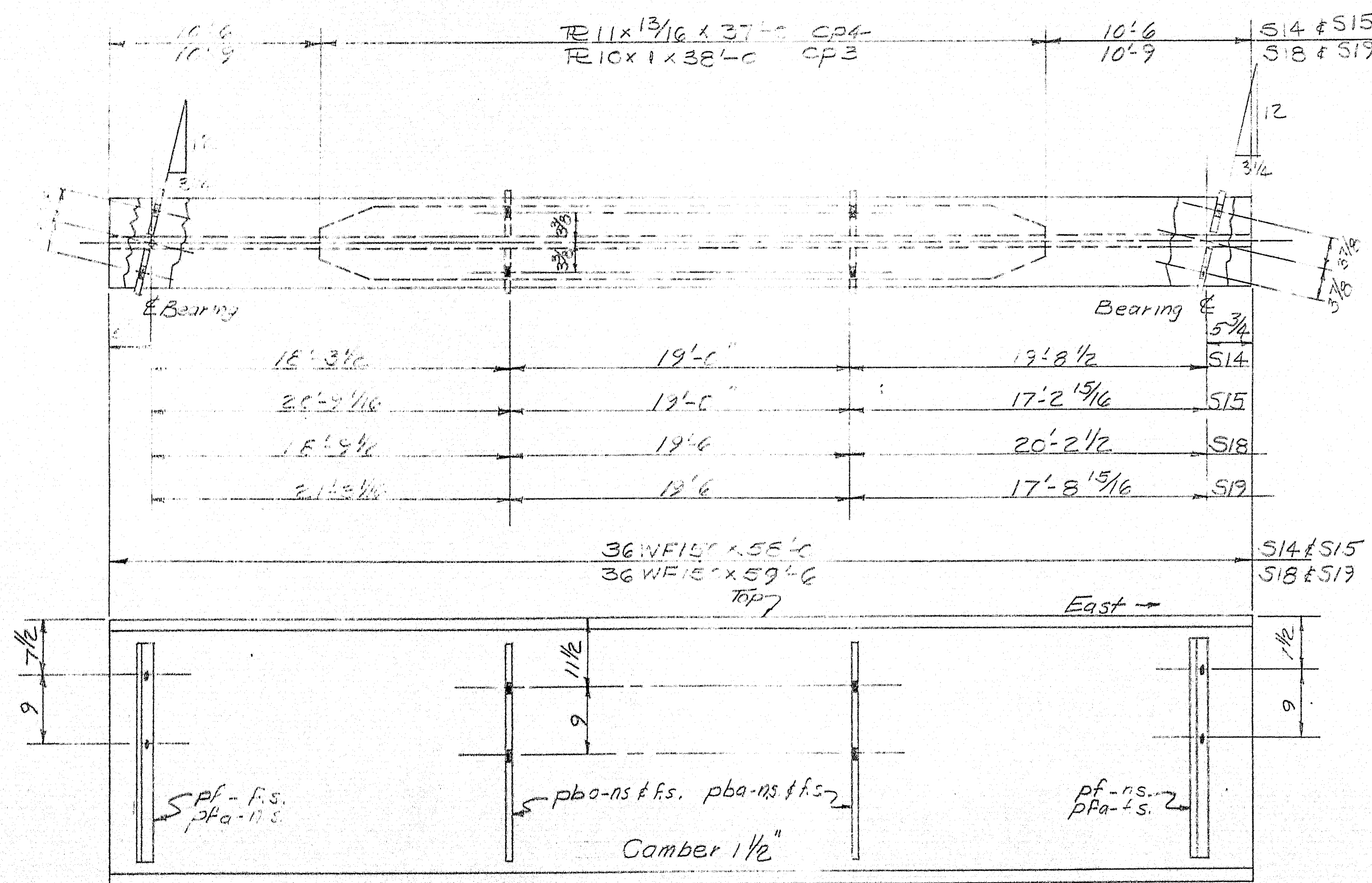
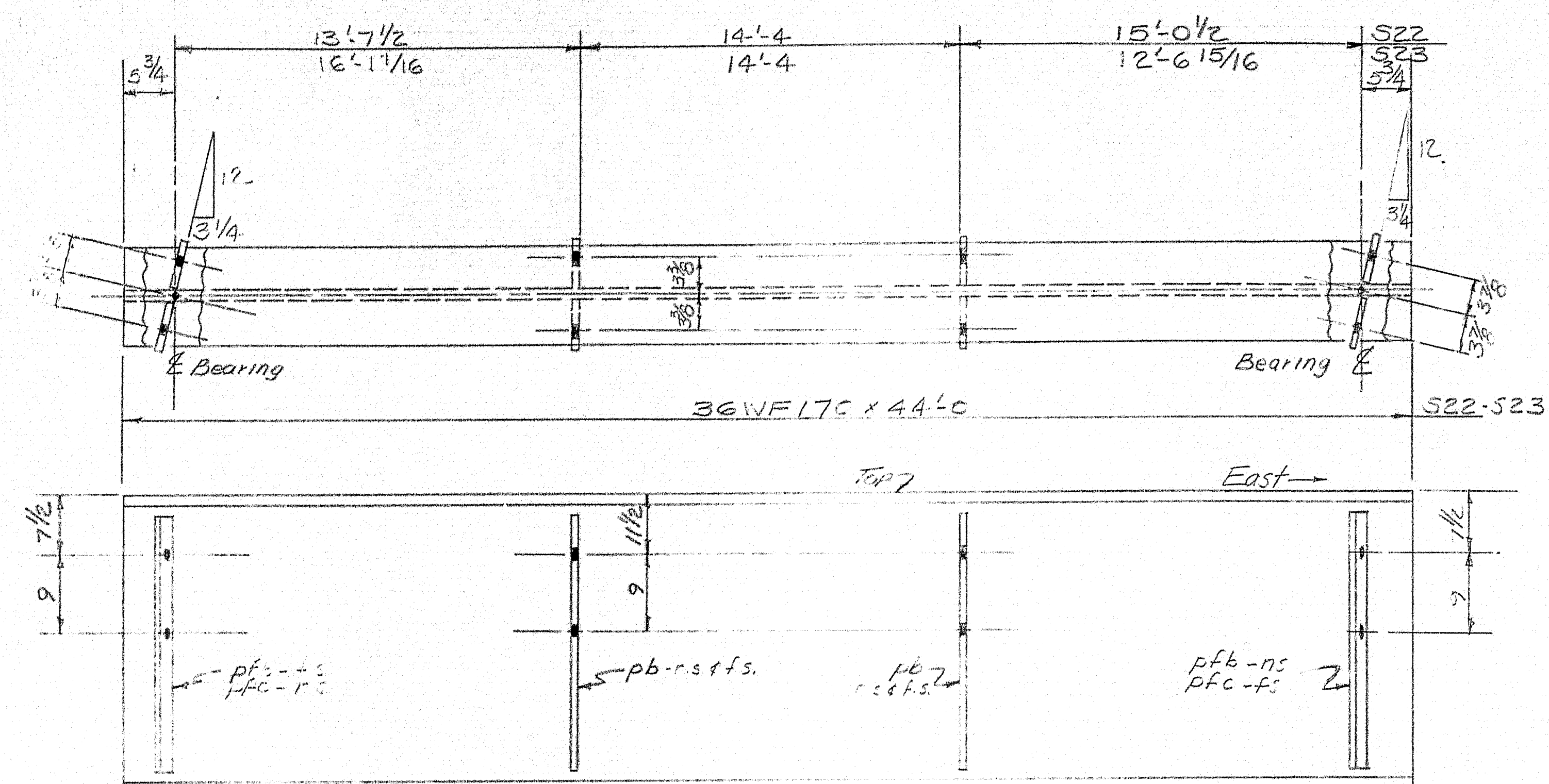
NOTES: See Dwg., 3-311-52 for typical details, Bill of materials, & general notes

STRINGER DETAILS	
Bancroft & Martin Rolling Mills Company	
South Portland, Maine	
LYONS ROAD BRIDGE	
SIDNEY, MAINE	
CUSTOMER CLANCHETTE BROTHERS	
DESIGNER MAINE S.H.C. BRIDGE DIV.	
ORDER NO. 3877	DWG. NO. 3-311-56

DRAWN	7-9-59	EBM
REVISION		
REVISION		
REVISION		

72-154

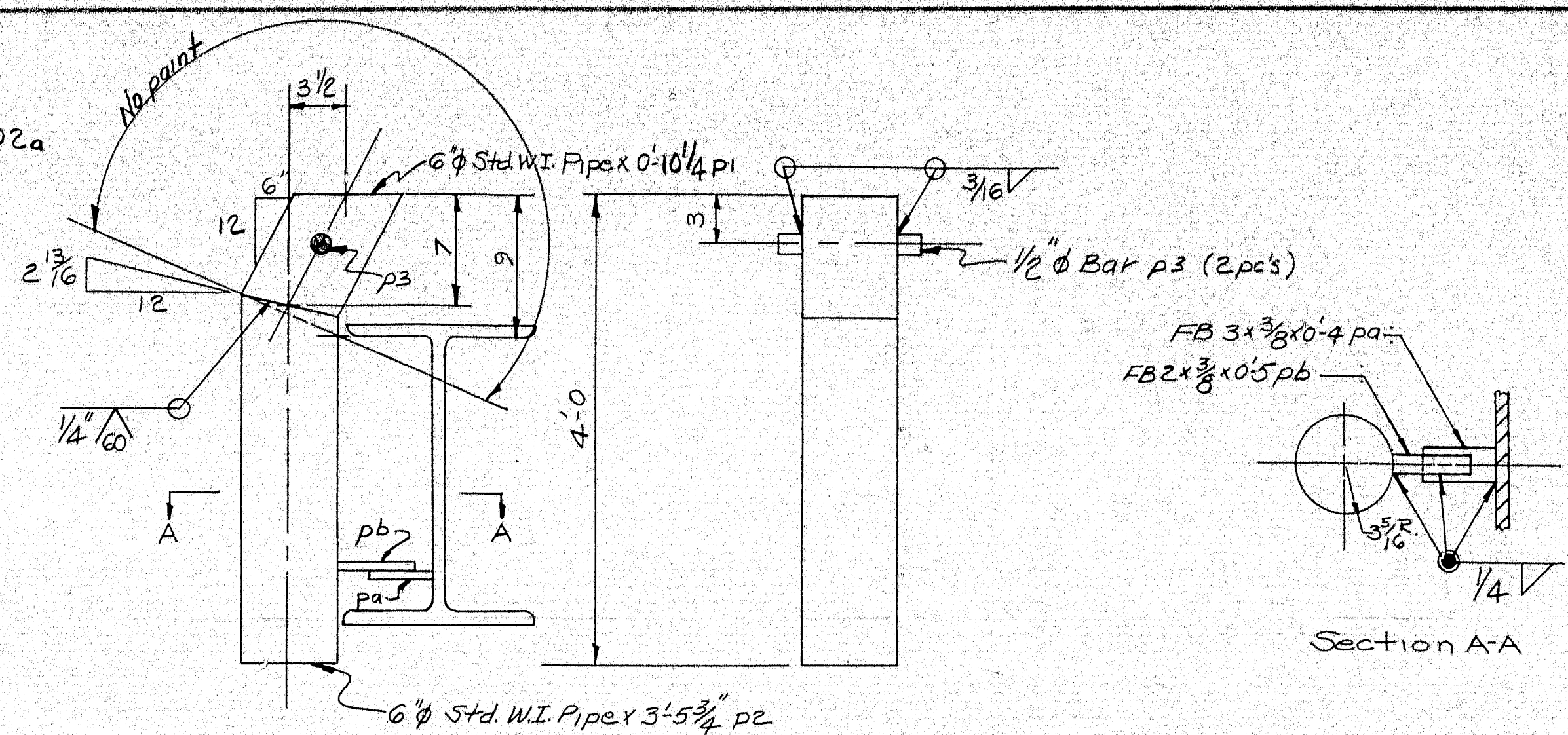
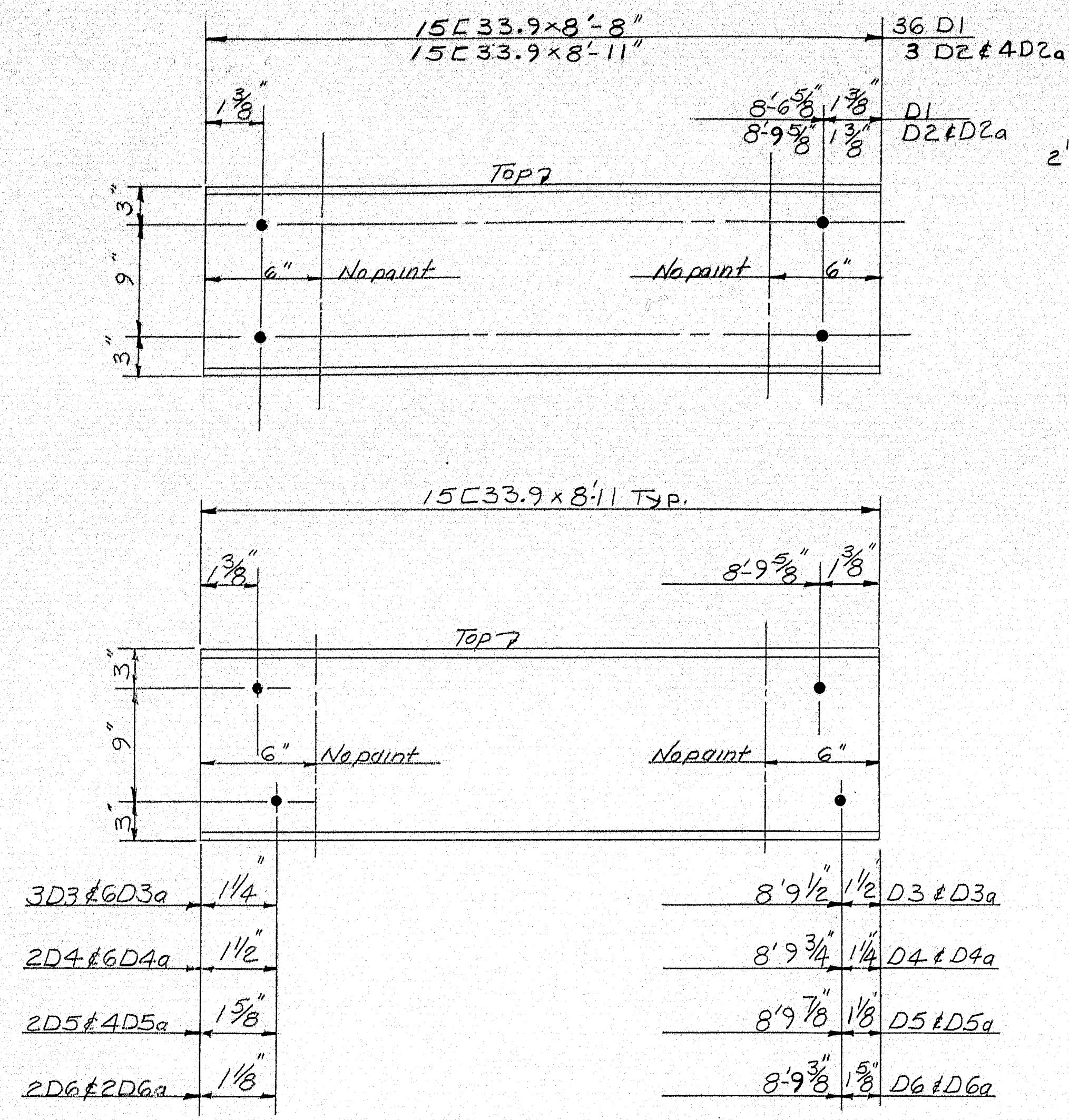




NOTES: See Lwg., 8311-52 for typical details, and math. & general notes

STRINGER DETAILS			
Bancroft & Martin Holdings, Mills Company			
South Portland, Maine			
LYONS ROAD BRIDGE			
SIDNEY, MAINE			
CUSTOMER CIANCHETTE BROTHERS			
DESIGNER MAINE S.H.C. BRIDGE DIV.			
ORDER NO.		DWG. NO. 8-311-57	

72-155



DRAIN DETAILS DRI (22 REQ'D)
 10 Req'd - Spans 1-2 & 3
 12 Req'd - Spans 4-5 & 6

NOTE:
 No paint on top flange of Diaphragms
 D2a, D3a, D4a, D5a, D6a

SHIP		BILL OF MATERIAL				DWG NO. 8-311-58	
MARK	NO.	MARK	SHAPE	LENGTH	WT.	WT. DET.	REMARKS
D1	36		15C33.9	8	8		
D2	3		do	8	11		
D3	3		do	8	11		
D4	2		do	8	11		
D5	2		do	8	11		
D6	2		do	8	11		
D2a	4		do	8	11		
D3a	6		do	8	11		
D4a	6		do	8	11		
D5a	4		do	8	11		
D6a	4		do	8	11		
Field	288		3/4" M. Bolt	0	1/4		
DRI	22		DEAINS	4	0		
pa	22		FB 3 x 3/8	0	4		Field weld
pb	22		FB 2 x 3/8	0	5		do do
	22	p1	6" Std. W.I. Pipe	0	10 1/4		84 #
	22	p2	6" Std. W.I. Pipe	3	5 3/4		27 #
	44	p3	1/2" Bar	0	1 1/2		

SHOP CONNECTIONS:
 FIELD CONNECTIONS: Bolted & Welded
 HOLES: 1 3/16" for 3/4" M. Bolts
 PAINT: Per State of Maine Specs. & as noted

DIAPHRAGMS & DRAIN DETAILS
Barnes & Martin Rolling Mills Company
 South Portland, Maine
 LYONS ROAD BRIDGE
 SIDNEY, MAINE
 CUSTOMER: CIANCHETTE BROTHERS
 DESIGNER: MAINE S.H.C. BRIDGE DIV.
 ORDER NO. 3377 DWG. NO. 8-311-58

DRAWN	9-12-58	BRM
REVISION		
REVISION		
REVISION		

