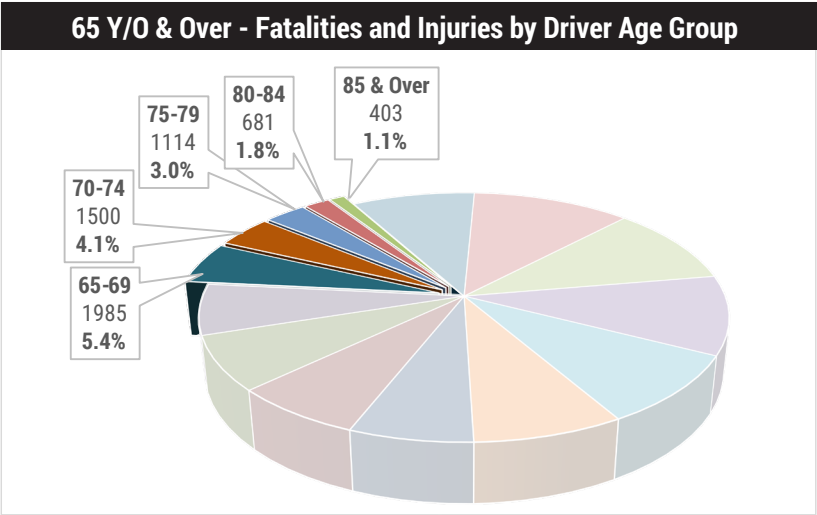
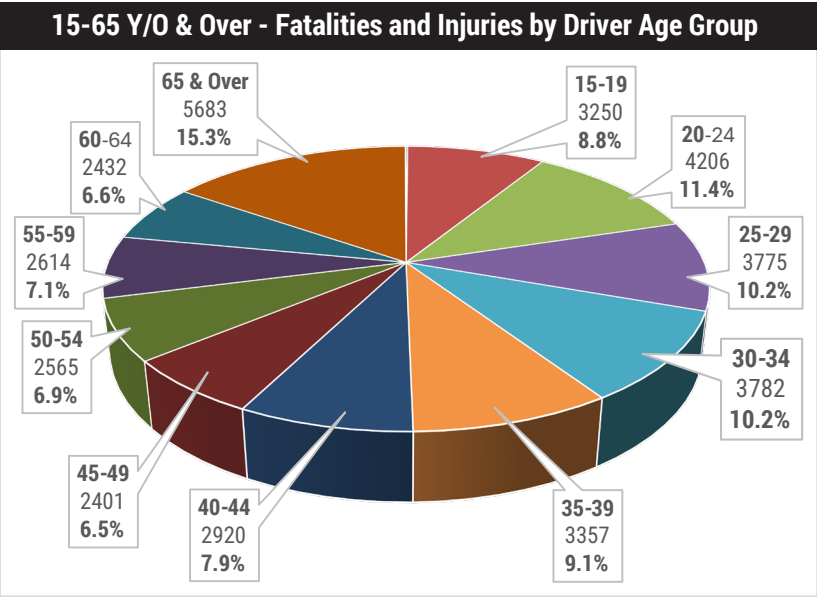
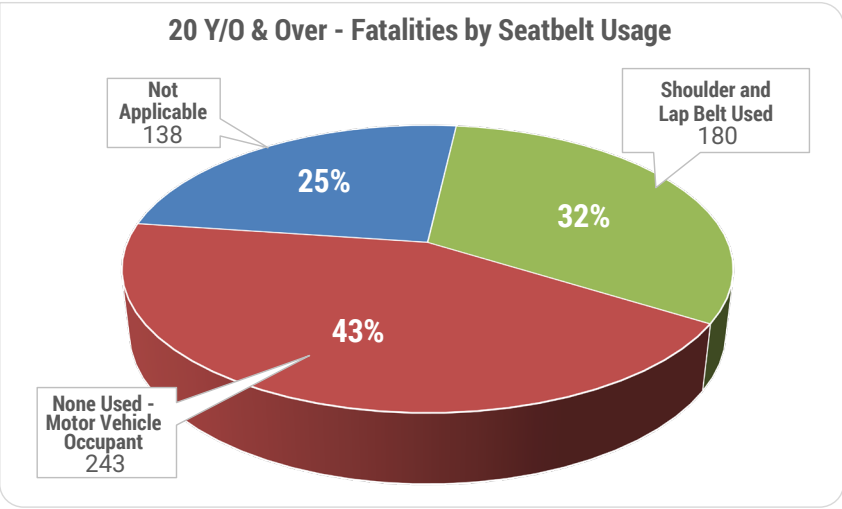
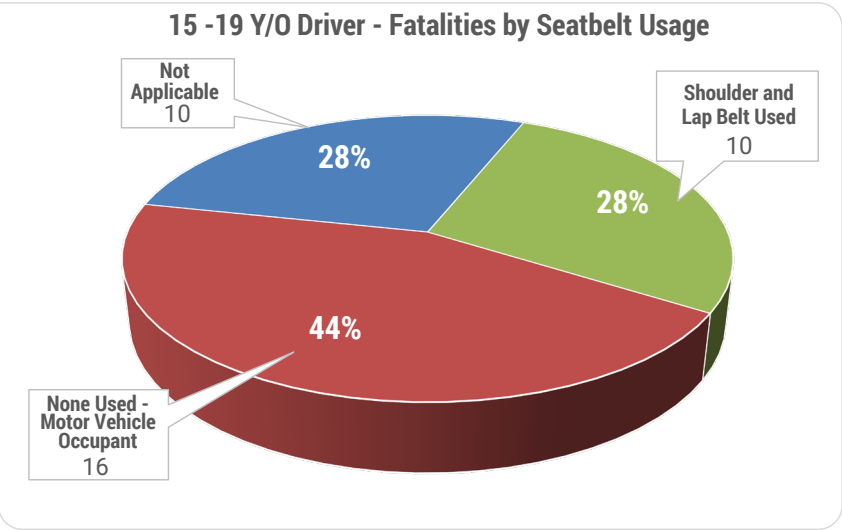


So far, there have been
3 teenage fatalities
through July of 2025



Teenage drivers account for nearly 9% of all fatalities and injuries in Maine. Of the fifteen age groups by five-year increments (except “85 & Over”), teen drivers have the 5th highest percentage of fatalities and injuries.

Teen drivers are only 1% more likely to not wear a seatbelt when killed in a fatal crash than driver 20 and over. That being said, they are 4% less likely to be wearing their shoulder and lap belt because the other 3% are in the Not Applicable category. Fatalities to driver in this category tend to be involved in crashes where submersion of the vehicle occurs, or the vehicle is destroyed by fire.



Distracted and Speeding and Impaired,



The data contained in this document relates to injuries to people and the crashes they are involved in based on **Reportable Crashes*** on Maine’s highways from 2020-2024.

*A reportable crash is a crash where an injury occurs or there is an estimated \$2,000 or more in property damage.

Injuries and Crashes

The data will be presented in those two formats, injuries and crashes. Both injuries and crashes are categorized by the level of injury. **Injuries are classified by (K) Fatal Injury, (A) Suspected Serious Injury, (B) Suspected Minor Injury, (C) Possible Injury, and (O) No Apparent Injury.** Crashes are categorized by K, A, B, C, and PD. These crash categories are based on the highest level of injury to any individual in that crash.

In a K crash, at least one person involved suffered a (K) Fatal Injury. There could be other (K) Fatal Injuries, or even any lower level of injury, but the entire crash is considered a single K crash. In an A crash at least one person involved suffered an (A) Suspected Serious Injury. There could be more (A) Suspected Serious Injuries or any lower level of injuries, but there will be no (K) Fatal Injuries. In a PD crash there were no injuries, only damage to property.

Drivers
15-19
years old
average
nearly 4,200
reportable
crashes
each year
in Maine.

4,200

It compares crashes and injuries between teenage drivers between the ages of 15-19, and all other drivers 20 and over. Drivers 15-19 years old average nearly 4,200 reportable crashes each year in Maine. Of those an average of 7 results in a fatal injury to a teenage driver. 10 teenage drivers were fatally injured in both 2022 and 2024. So far for 2025 there have been 3 teenage drivers killed in crashes.

Distracted

Teen drivers are approximately 1.5% more likely to be involved in a distracted driving crash where they are injured or killed than drivers 20 and older. If older drivers were involved in distracted crashes at the same rate it would account for approximately 400 more distracted driving crashes each year.

Speeding

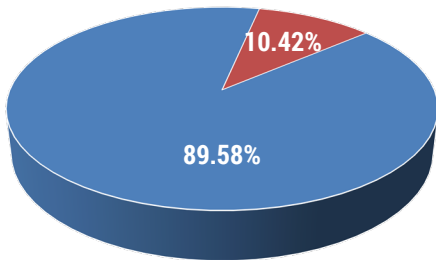
Speeding crashes are derived from two areas of a crash report, "Exceeded Posted Speed Limit" and "Drove Too Fast for Conditions". Teen drivers are about 5% more likely than drivers twenty and over to be involved in speed related crashes where they suffer a fatality or other injury.

Additionally, teens are almost 8% more likely for that crash to be related to exceeding the posted speed limit.

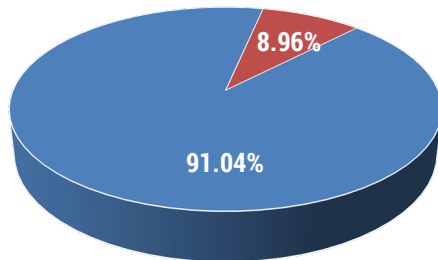
Impaired

While drivers 20 and over are more than 3% more likely to be involved in a fatal or injury crash than teen drivers, teen drivers, who are not of legal age for consuming alcohol or purchasing marijuana, still account for nearly 2% of fatal and injury crashes.

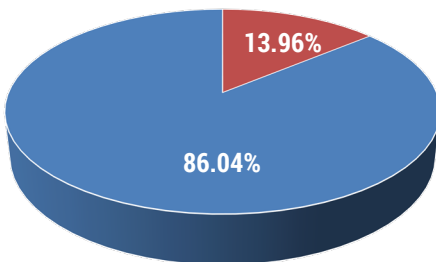
15 -19 Y/O Distracted Driver
Fatal & Injury Crashes



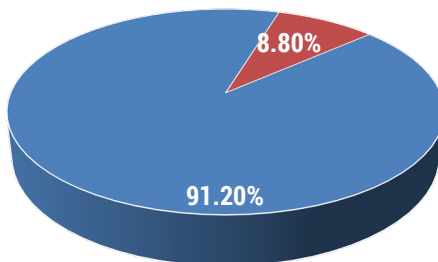
20 Y/O & Over Distracted Driver
Fatal & Injury Crashes



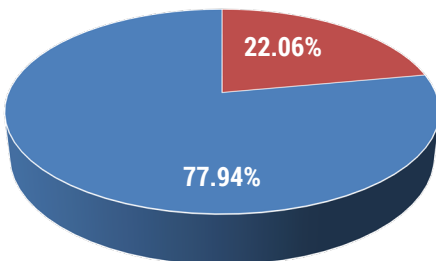
15 -19 Y/O Speeding Driver
Fatal & Injury Crashes



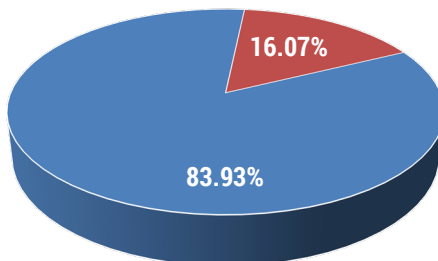
20 Y/O & Over Speeding Driver
Fatal & Injury Crashes



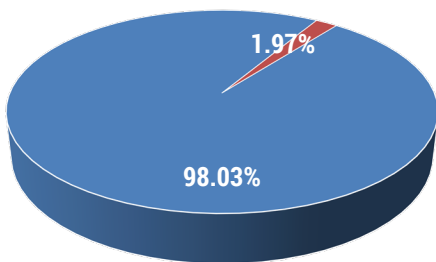
15 -19 Y/O Driver
Fatal & Injury Crashes by Type of Speeding



20 Y/O & Over Driver
Fatal & Injury Crashes by Type of Speeding



15 -19 Y/O Impaired Driver
Fatal & Injury Crashes Speeding



20 Y/O & Over Impaired Driver
Fatal & Injury Crashes

