

SPECIAL PROVISION
SECTION 607
FENCES
(Chain Link Snow Fence)

607.01 Description The following paragraph is added:

This work consists of furnishing all materials for, and the construction of a chain link snow fence. The chain link snow fence shall be 33 inches tall and made from chain link materials as shown in the Plans and as specified herein.

607.02 Materials The following paragraphs are added:

Posts, rails, and braces shall be manufactured by one of the following methods with the steel conforming to ASTM A1011 or ASTM A1008 and A1011/A1011M with minimum yield strength 50 ksi:

- Furnace butt welded, continuous welded
- Cold rolled and electric resistance welded
- Seamless

Hardware shall be hot dipped galvanized in accordance with AASHTO M 232 (ASTM A 153) or AASHTO M 298 Class 50 (ASTM B 695 Class 50).

The chain link fabric shall be 9-gauge steel, zinc coated conforming to AASHTO M 181 Type 1 Class D (ASTM A 392), aluminum-coated conforming to AASHTO M181 Type II (ASTM A 491), or 6-gauge aluminum alloy conforming to AASHTO M 181 Type III (ASTM F1183). Chain-link fabric shall be knuckled on top and bottom. The size of the wire mesh shall be 1 inch. Wire ties shall be standard round 9-gauge zinc or aluminum coated steel or 6-gauge aluminum alloy conforming to ASTM F 626. All ties shall be wrapped around chain-link fabric twice (double-pigtailed) at both ends. Space ties at 6" on center to bottom rail and at 12" on center at all posts and other rails. Mechanical or power fastened ties are acceptable.

607.06 Method of Measurement The following paragraph is added:

Chain link snow fence will be measured for payment as one unit, accepted in place and in conformity with the details shown on the Plans or as directed by the Resident.

607.07 Basis of Payment The following paragraph is added:

Chain Link Snow Fence will be paid for at the Contract unit price, complete and accepted in place. Such price will be compensation for furnishing all materials, labor, equipment, coatings, and incidentals to complete the work.

Payment will be made under:

<u>Pay Item</u>	<u>Pay Unit</u>
607.183 Chain Link Snow Fence 33"	Lump Sum

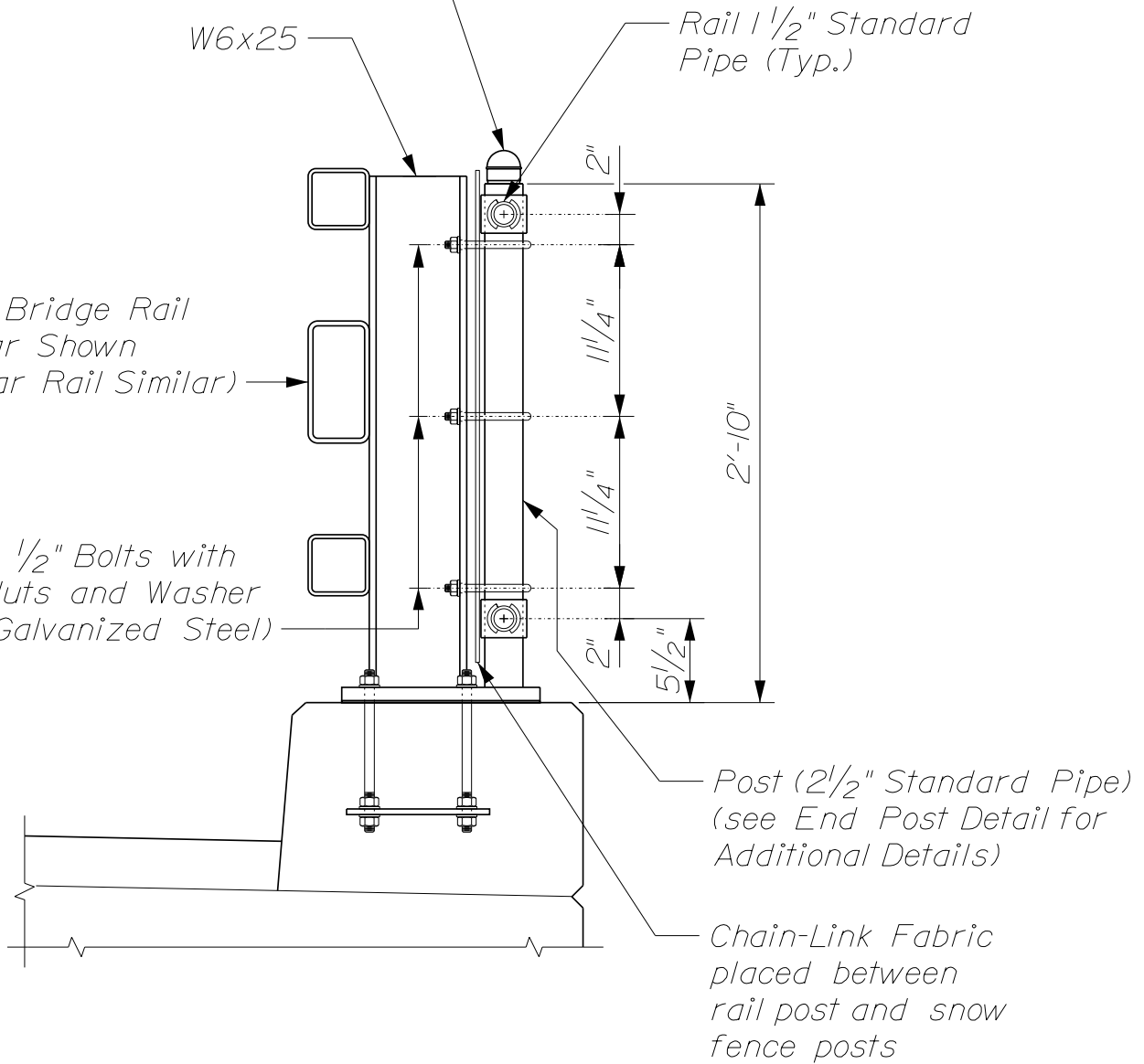
*End Caps Secure to Post
(Crimp or Screw Set) (Typ.)*

W6x25

*Rail 1 1/2" Standard
Pipe (Typ.)*

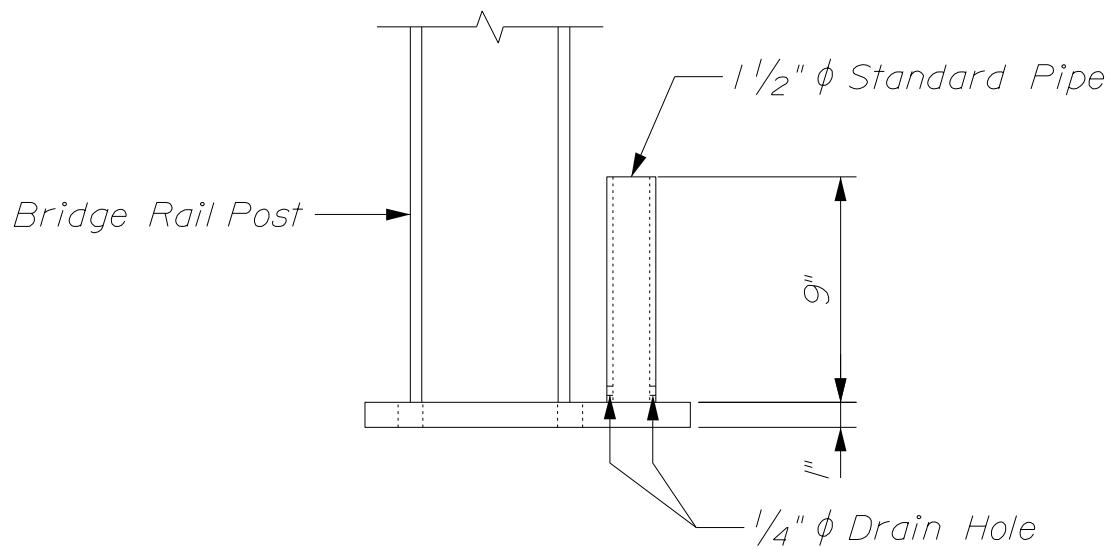
*Steel Bridge Rail
3 Bar Shown
(4 Bar Rail Similar)*

*1/2" Bolts with
Nuts and Washer
(Galvanized Steel)*

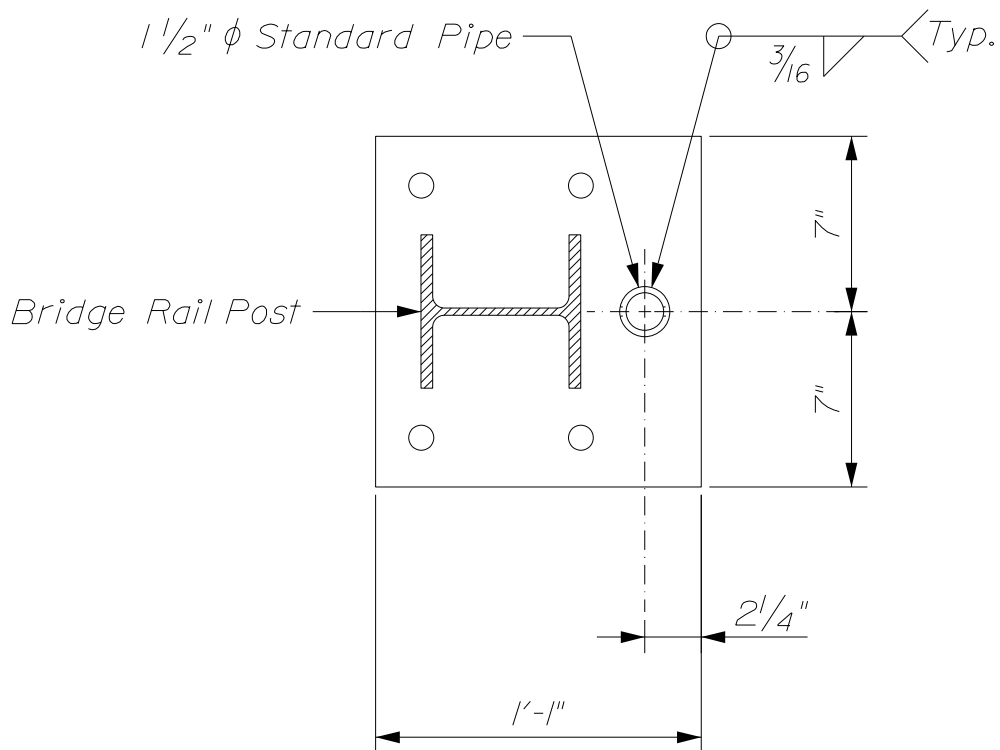


~ SNOW FENCE CONNECTION DETAILS ~

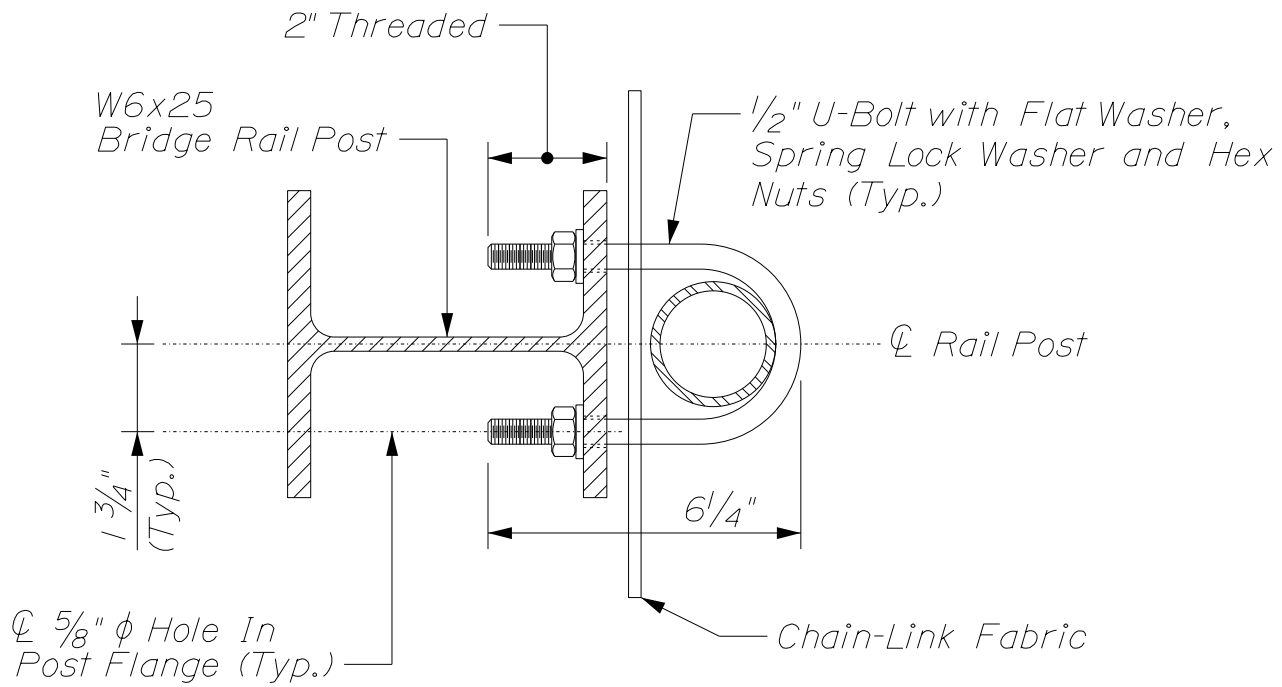
*SNOW FENCE DETAILS
607(10)*



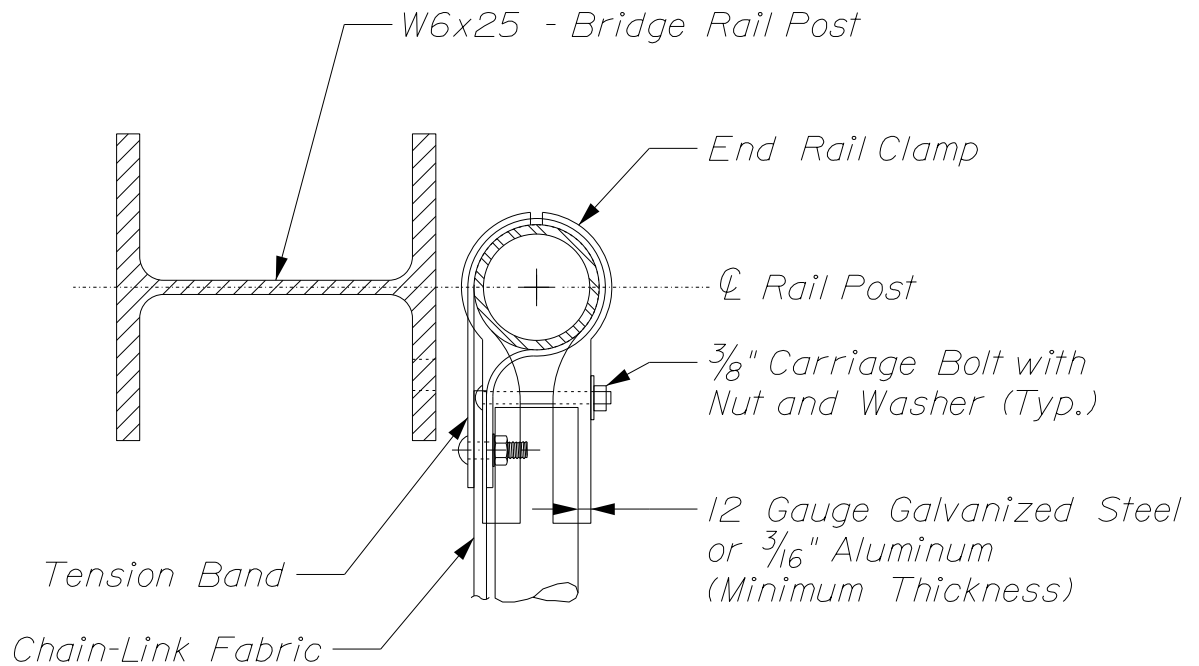
~ MODIFIED BASE PLATE ELEVATION ~



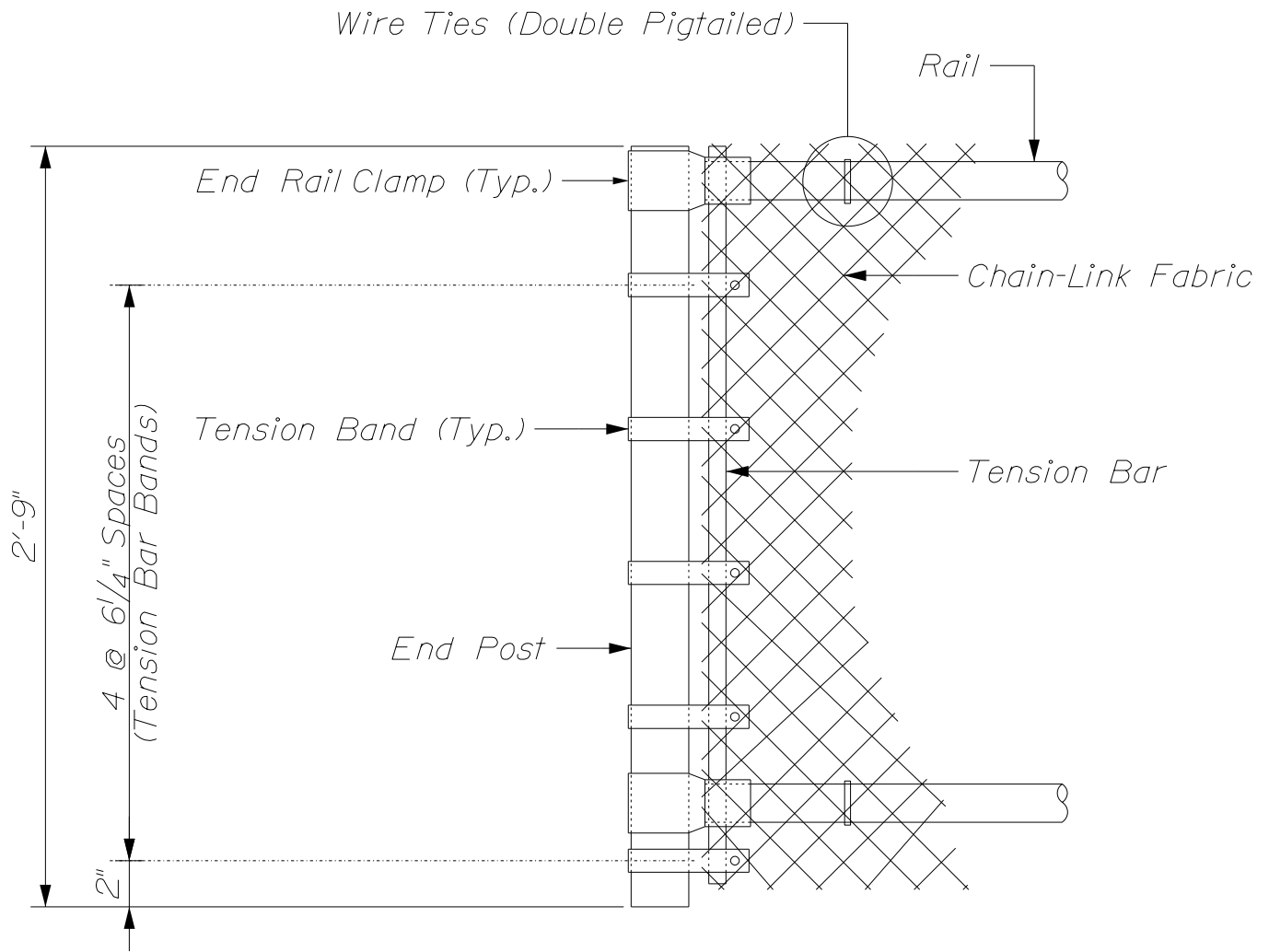
~ MODIFIED BASE PLATE DETAIL ~



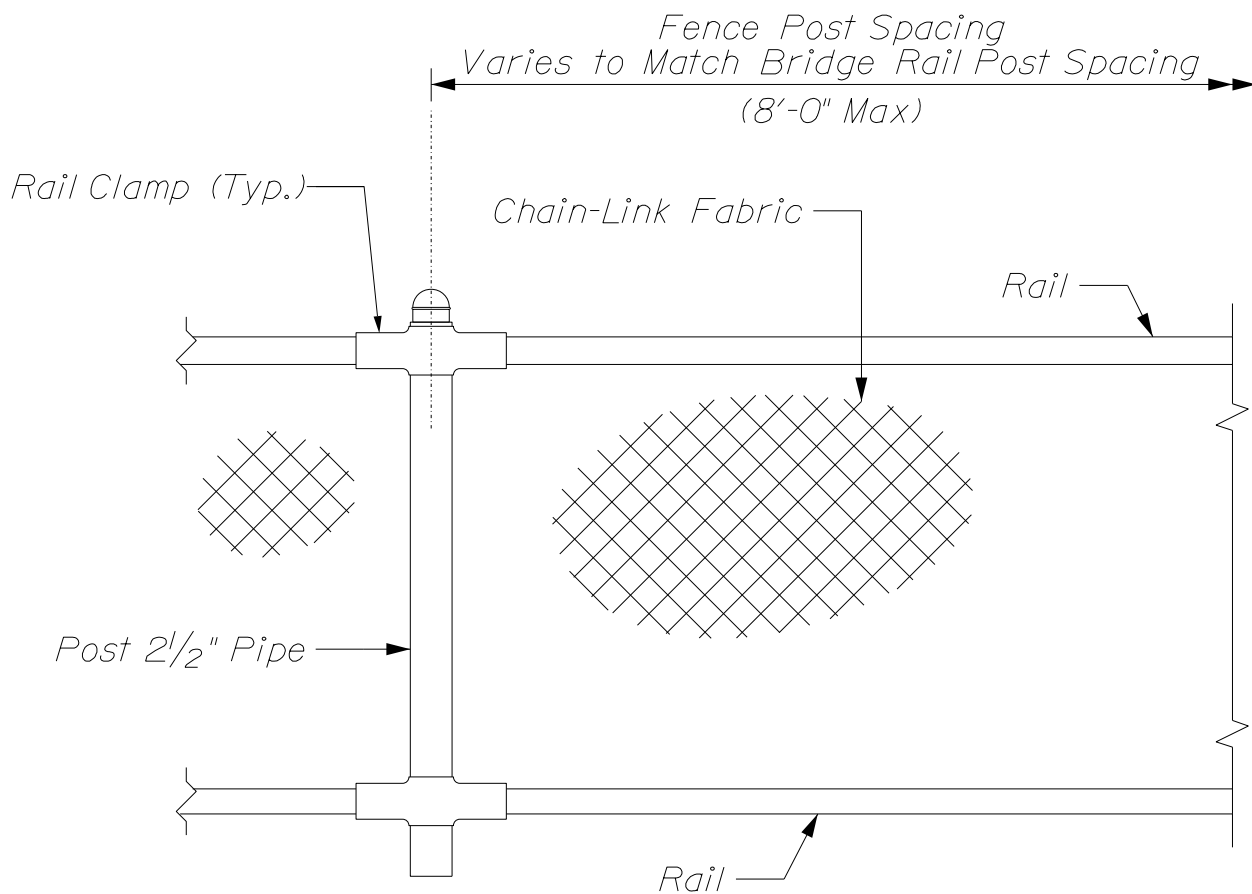
~ U-BOLT CONNECTION DETAIL ~
(At Interior Post)



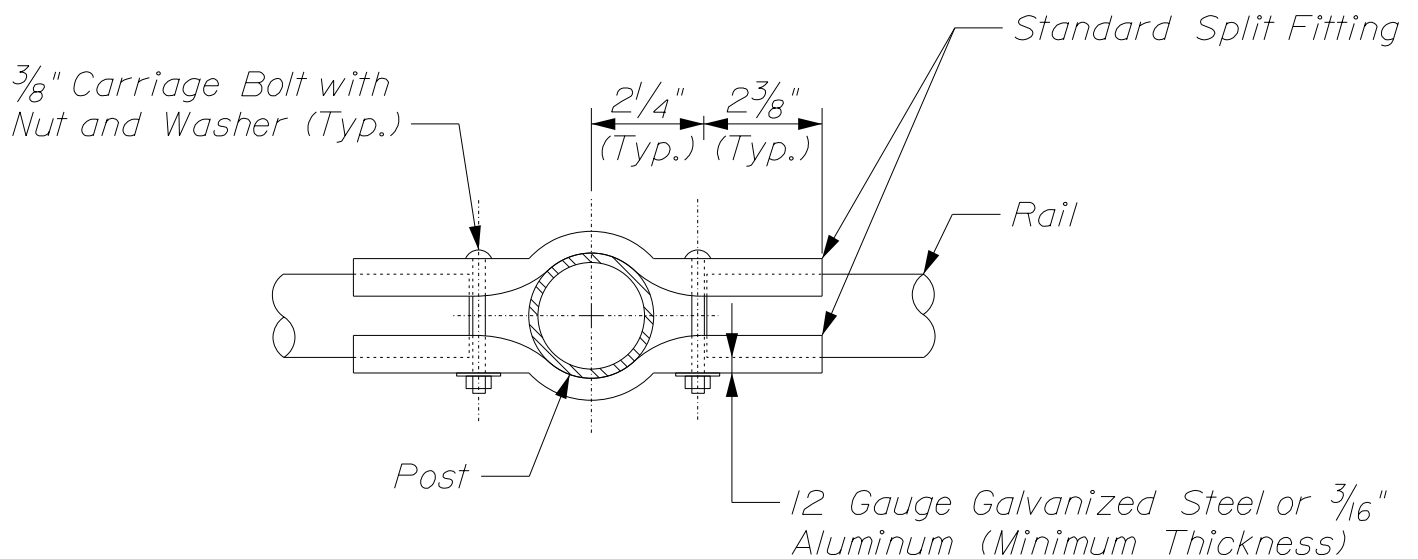
~ END POST DETAIL ~
(U-Bolt Not Shown)



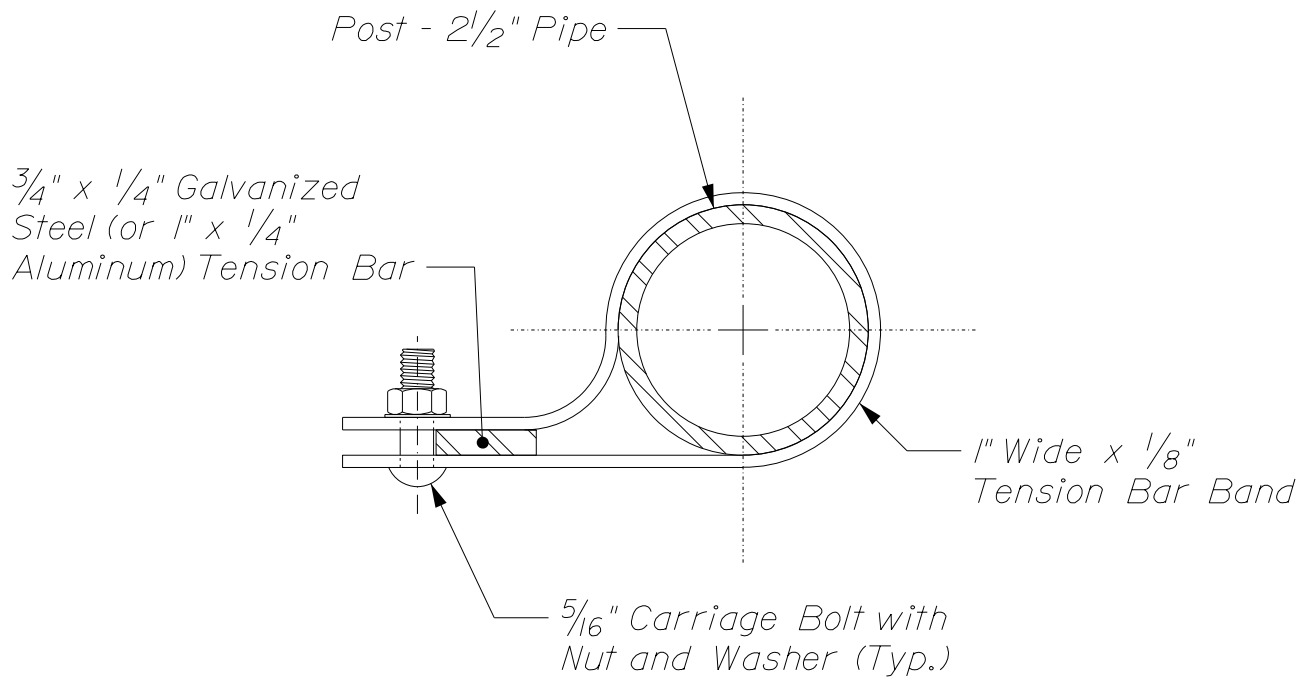
~ END POST ELEVATION ~



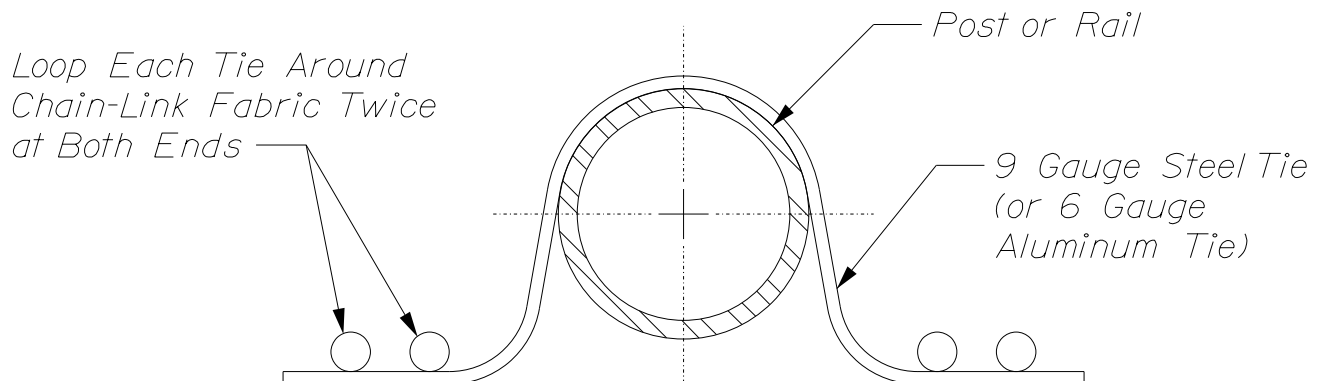
~ ELEVATION - SNOW FENCE ~



~ RAIL CLAMP DETAIL ~



~ TENSION BAND DETAIL ~



~ DOUBLE PIGTAILED TIE ~

SNOW FENCE NOTES

- 1. Chain-Link fence shall conform to Section 710.03 and*
- 2. Post and rail pipe shall be hot-dip galvanized steel. All pipe shall be schedule 40, standard weight. Nominal pipe sizes are shown.*
- 3. Rail may be field cut (sawn) to fit post spacing. Repair galvanizing on cut edges in accordance with ASTM A780. The thickness of the repair coating must be equal to or greater than the original coating thickness.*
- 4. Payment for modified base plate will be incidental to related Contract items.*