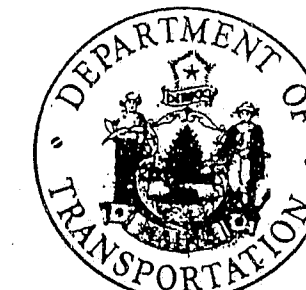


STATE OF MAINE
DEPARTMENT OF TRANSPORTATION



PLANS

BRIDGE WEARING SURFACE
REPLACEMENTS

TRAFTON ROAD OVER I-95
WATERVILLE

PROJECT NO. IR-IM-95-6(74)117

I-95 OVER ROUTE 201
I-95 OVER MAINE CENTRAL RAILROAD
CLINTON A. CLAUSON MEMORIAL BRIDGES
FAIRFIELD-BENTON

PROJECT NO. IR-IM-95-7(121)

I-95 OVER RIVER ROAD
BENTON

PROJECT NO. IR-IM-95-7(118)127

I-95 OVER HINCKLEY ROAD
CLINTON

PROJECT NO. IR-IM-95-7(120)131

HILL ROAD OVER I-95
CLINTON

PROJECT NO. IR-IM-95-7(122)132

KENNEBEC AND SOMERSET COUNTIES

SPECIFICATIONS

DESIGN: AASHTO Standard Specifications for
Highway Bridges, 1989 with 1990 and 1991 Interims.

CONTRACT: State of Maine, Department
of Transportation Standard Specifications
for Highways and Bridges, Revisions
of October, 1990.

DESIGN LOADING

EXISTING LOADING H20

MATERIALS

CONCRETE (Unless otherwise specified) CLASS A
REINFORCING STEEL ASTM A615, GRADE 60

BASIC DESIGN STRESSES

CONCRETE $f_c=3,000$ psi
REINFORCING STEEL $F_y=60,000$ psi

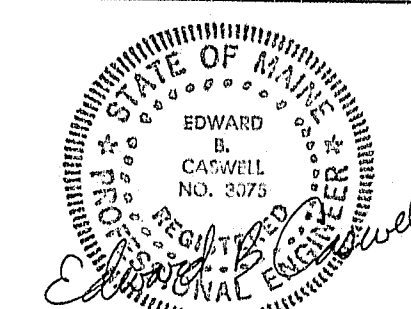
Plans of the existing bridge are available for the
Contractor's reference at the Bridge Design Office
in Augusta. The plans are reproductions of original
drawings as prepared for the construction of the
bridge and it is very unlikely that the plans will
show any construction field changes or any altera-
tions which may have been made to the bridge during
its life span.

All work contemplated under this contract to be governed
by and in conformity with the STANDARD SPECIFICATIONS
(revision of October, 1990) and supplementals thereto, except as
modified on the plans and in the special provisions.

F.H.W.A. REV. NO.	STATE	PROJECT NUMBER	SHEET NO.	TOTAL SHEETS
1	MAINE	IR-IM-95-6(74)117	1	28
		IR-IM-95-7(122)		
		IR-IM-95-7(118)127		
		IR-IM-95-7(120)131		
		IR-IM-95-7(122)132		

INDEX OF SHEETS

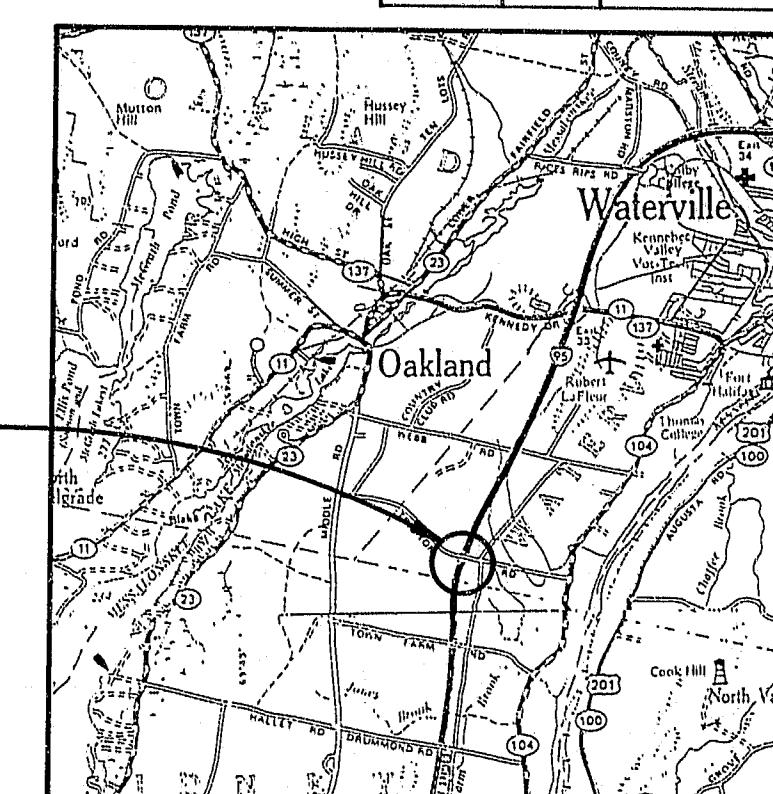
TITLE SHEET	1
GENERAL PLAN, TRAFTON ROAD	2
ESTIMATED QUANTITIES	3
SEQUENCE OF CONSTRUCTION	4
JOINT DETAILS	5
GENERAL PLAN I-95 OVER RTE 201 & MCHRR	6
GENERAL PLAN CLINTON A. CLAUSON	7
ESTIMATED QUANTITIES & GENERAL NOTES	8
GENERAL PLAN I-95 OVER RIVER ROAD	9
ESTIMATED QUANTITIES & GENERAL NOTES	10
JOINT DETAILS	11
END POST DETAILS	12
GENERAL PLAN I-95 OVER HINCKLEY ROAD	13
ESTIMATED QUANTITIES & GENERAL NOTES	14
JOINT DETAILS	15
END POST DETAILS	16
GENERAL PLAN HILL ROAD OVER I-95	17
ESTIMATED QUANTITIES AND GENERAL NOTES	18
JOINT DETAILS	19
END POST & RAIL DETAILS	20
BD 201-89 CONCRETE END POSTS	21
BD 301-89 EXPANSION DEVICE: COMPRESSION SEAL	22
BD 302-89 EXPANSION DEVICE: GLAND SEAL	23
BD 401-89 ALUMINUM BRIDGE RAIL: 2-BAR	24
HD-6 REV. JUNE 1990 TYPE 3 GUARD RAIL	25
HD-10 FEB. 1989 MAINTENANCE OF TRAFFIC	26
HD-11 REV. MAY 1990 MAINTENANCE OF TRAFFIC	27
HD-12 REV. APRIL 1980 MAINTENANCE OF TRAFFIC	28



APPROVED:
STATE OF MAINE
DEPARTMENT OF TRANSPORTATION
DATE
5/14/92
COMMISSIONER
5/14/92
CHIEF ENGINEER

UNITED STATES
DEPARTMENT OF TRANSPORTATION
FEDERAL HIGHWAY ADMINISTRATION
REGION 1
APPROVED: 107-312
DIVISION ADMINISTRATOR DATE

PIN 004980.00	F.S. No.	STATE	PROJECT NUMBER	SHEET NO.	TOTAL SHEETS
	1	MAINE	2R-14-95-6(74)117	2	28



LOCATION MAP

SCOPE OF WORK

Remove existing bituminous wearing surface and existing membrane.
Replace with 3" bituminous wearing surface and 1/4" membrane waterproofing. Slab rehabilitation is required. Remove, modify and reset the approach rail. Provide approach rail to endpost connections. Retrofit and seal the deck joints at the piers.

MAINTENANCE OF TRAFFIC

Maintain one 9'-6" lane of traffic with signals.

TRAFFIC DATA

Current (1992) AADT	145
Future (2002) AADT	175
DHV - % of AADT	11
Design Hour Volume	20
% Heavy Trucks (AADT)	8
% Heavy Trucks (DHV)	6
Directional Distribution (DHV)	60

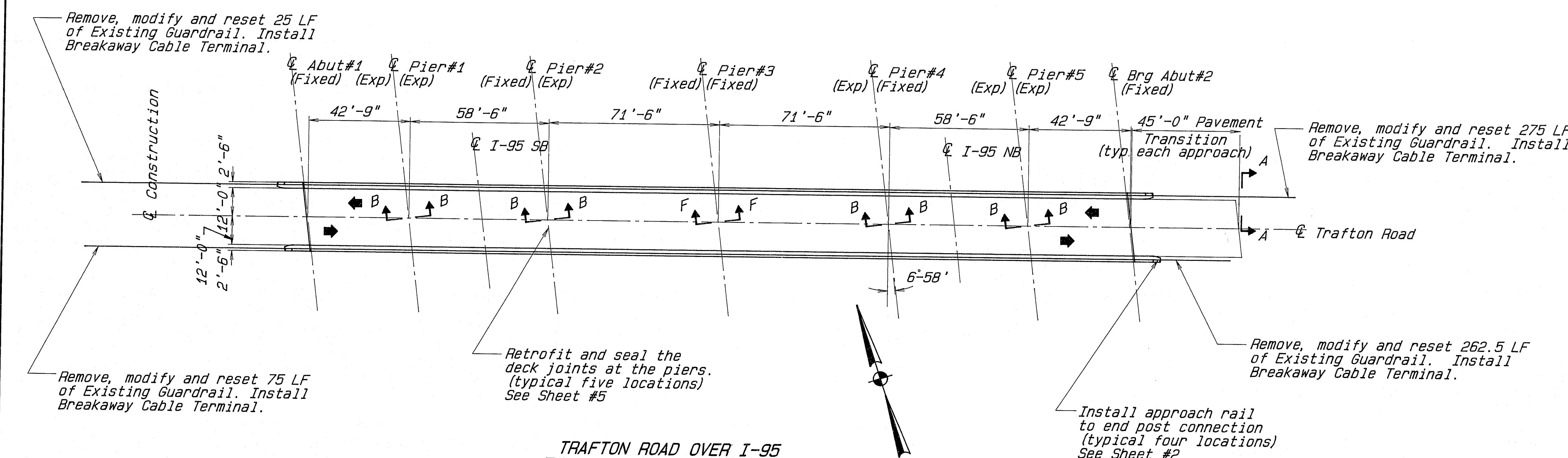
Refer to Sheet 4 for Section B-B and Section F-F

Refer to BD 201-89 for Guardrail Post Spacing and Double Layer Modified Guardrail Panel Location.
Refer to Sheet 4 for Approach pavement transition detail.

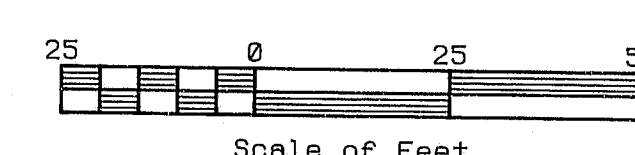
STATE OF MAINE
DEPARTMENT OF TRANSPORTATION

WEARING SURFACE REPLACEMENT
AT
TRAFTON ROAD
OVER I-95
IN THE CITY OF
WATERVILLE
KENNEBEC COUNTY
GENERAL PLAN

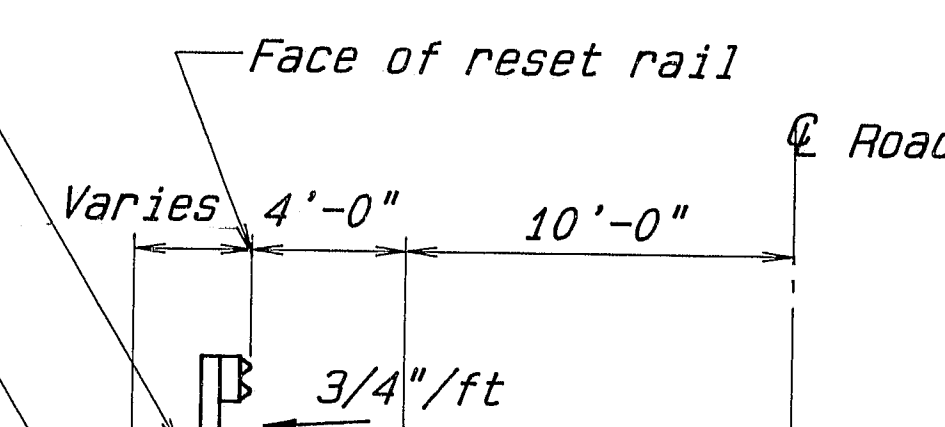
SHEET 1 OF 4 AUGUSTA, MAINE MAY 1992



TRAFTON ROAD OVER I-95

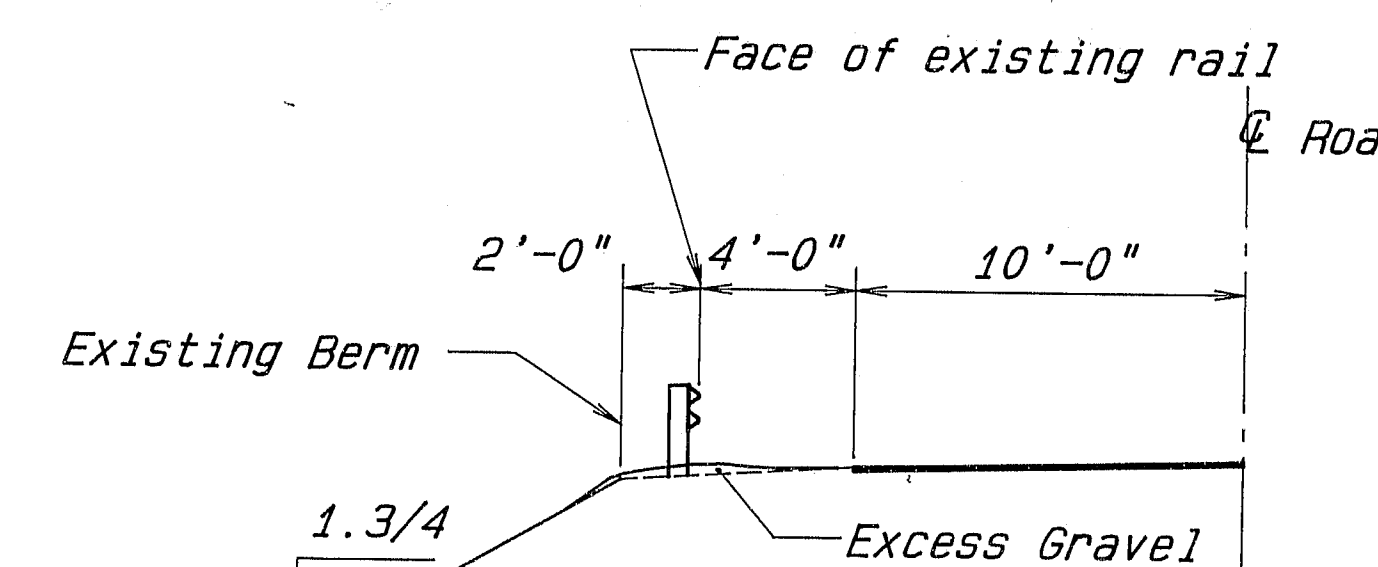


Spread evenly onto fore slopes.
Apply 2" of loam, seed method #2 and mulch.
Grade excess gravel from shoulders.



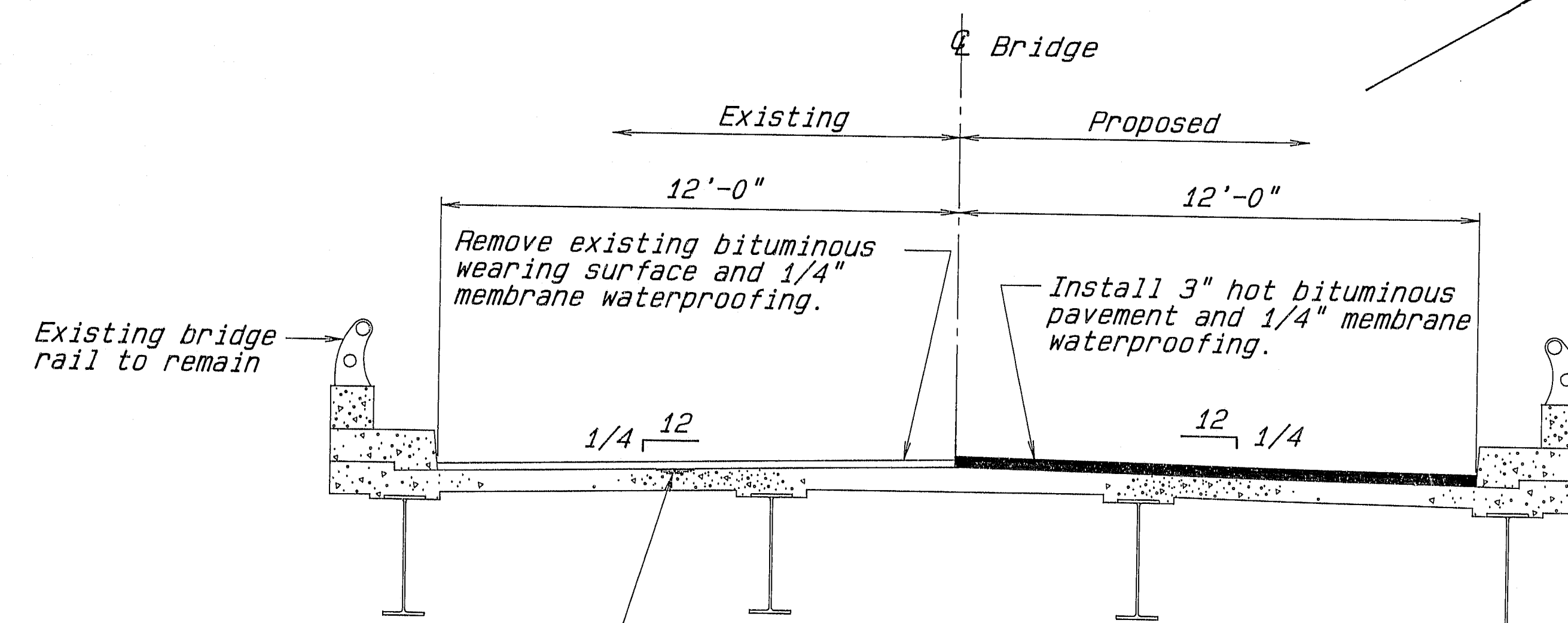
SECTION A-A

(Proposed)
(Typical all guardrail slopes)

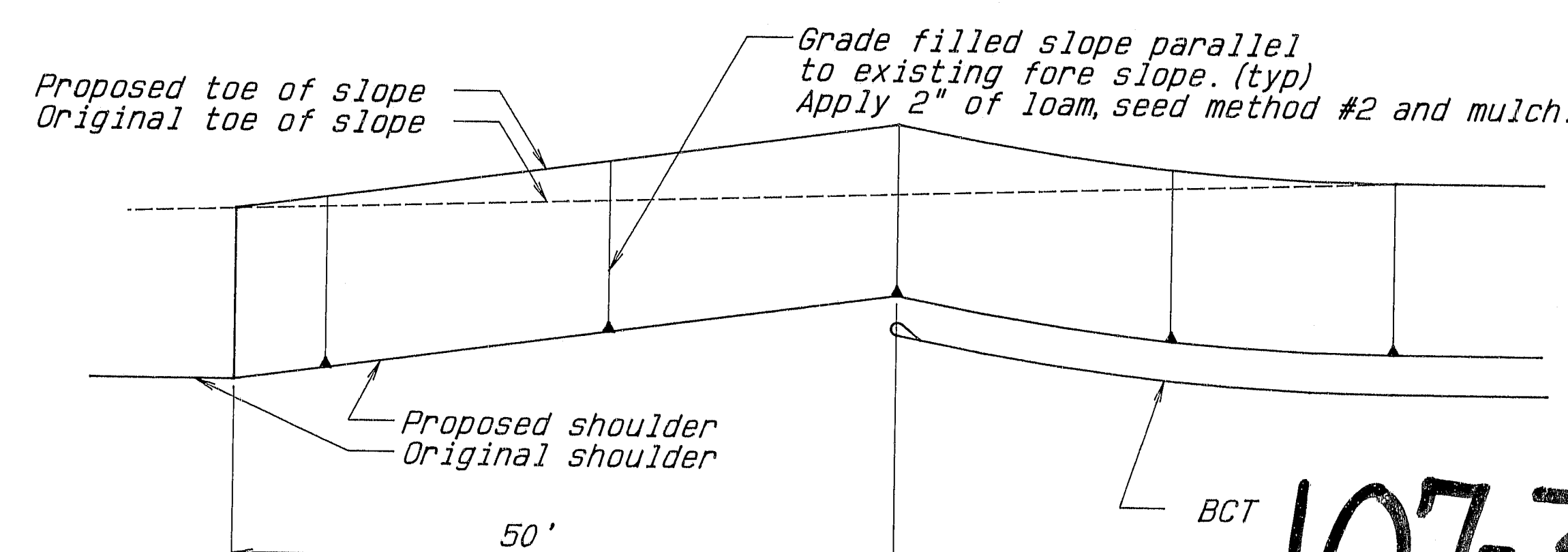


SECTION A-A

(Existing)



TRANSVERSE SECTION

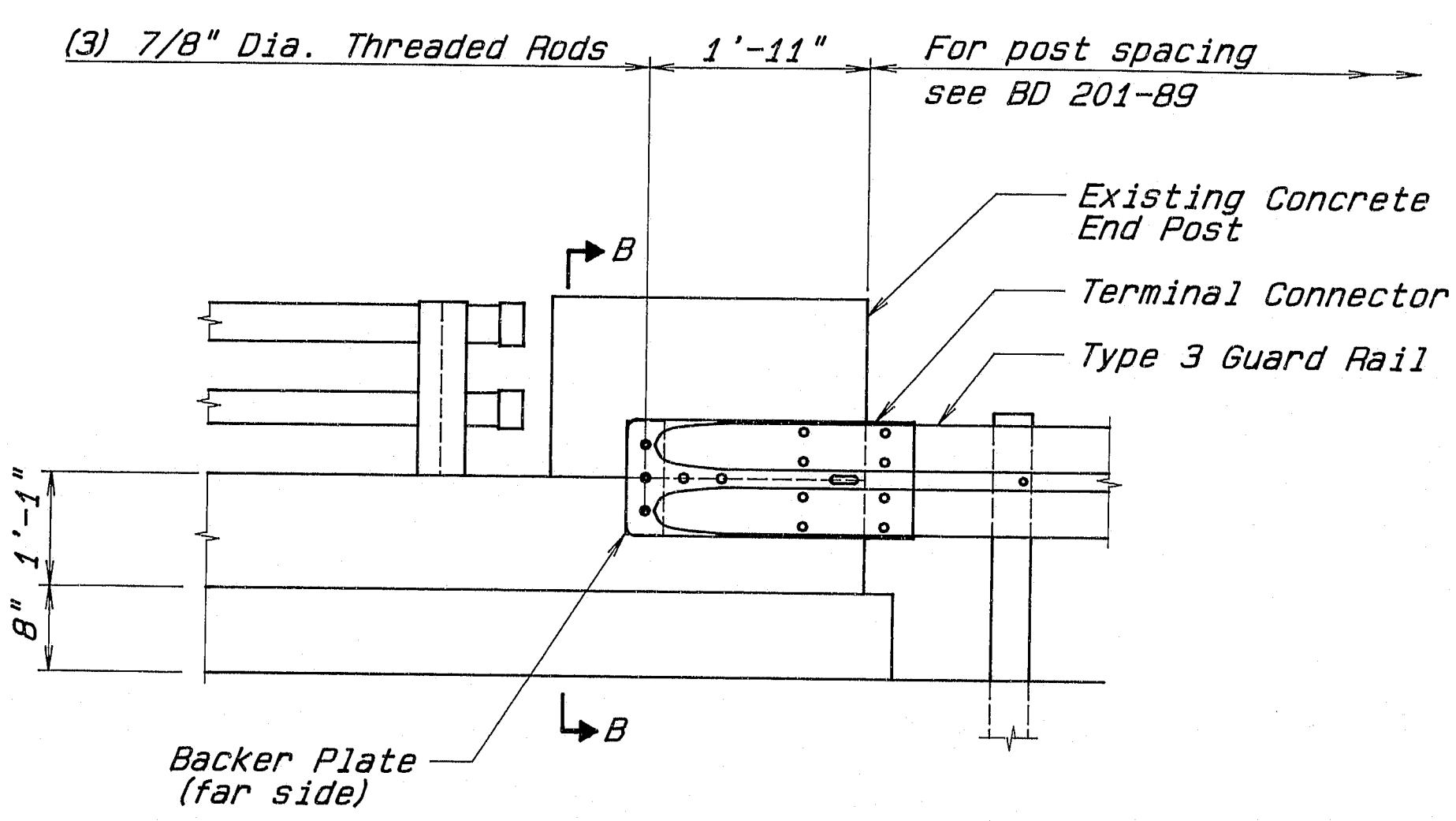


SHOULDER WIDENING FOR
BREAKAWAY CABLE TERMINAL

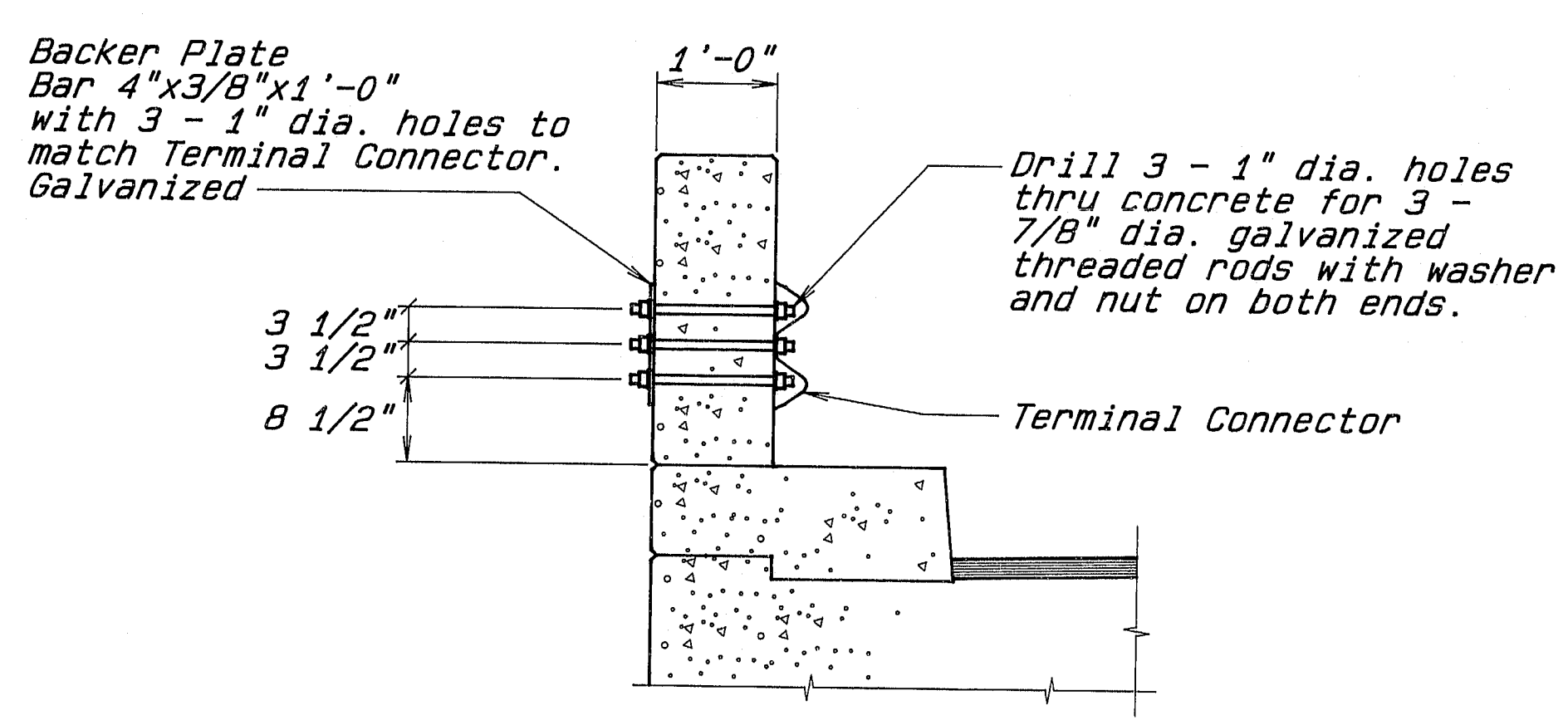
107-313

ESTIMATED QUANTITIES			
ITEM NO.	DESCRIPTION	QUANTITY	UNIT
202.127	Removing of Existing Bituminous Pavement	0.07	LS
202.203	Pavement Butt Joints	240	SY
403.10	Hot Bituminous Pavement, Grading D	173	TON
409.15	Bituminous Tack Coat, Applied	12	GAL
508.13	Membrane Waterproofing	0.07	LS
514.06	Curing Box for Concrete Cylinders	0.25	EA
518.30	Rehab of Structural Concrete Slab-to Reinf. Steel	170	SF
518.31	Rehab of Structural Concrete Slab-to below Reinf. Steel	85	SF
520.241	Bridge Joint Modification - Type I	4	EA
520.242	Bridge Joint Modification - Type II	1	EA
526.301	Temporary Concrete Barrier-Type I	0.06	LS
527.32	Portable Crash Barrels	8	EA
606.178	Guard Rail Beam	63	LF
606.25	Terminal Connector	4	EA
606.35	Guard Rail Delineator Post	4	EA
606.364	Guard Rail, Remove, Modify and Reset, Type 3b	638	LF
606.367	Replace Unusable Existing Guard Rail Posts	2	EA
606.751	Widen Shoulder for Breakaway Cable Terminal	4	EA
606.77	Breakaway Cable Terminal	4	EA
627.61	4 Inch Solid White Pavement Marking Line	900	LF
627.63	4 Inch Solid Yellow Pavement Marking Line	1400	LF
627.65	White or Yellow Pavement and Curb Marking	30	SF
627.67	Removing Pavement Markings	200	SF
629.05	Hand Labor, Straight Time	10	MH
631.14	Grader (including operator)	10	HR
631.15	Roller, Earth and Base Course (including operator)	10	HR
631.171	Truck-Small (including operator)	10	HR
631.18	Chain Saw Rental (including operator)	10	HR
631.22	Front End Loader (including operator)	10	HR
639.18	Field Office Type "A"	0.20	EA
639.22	Testing Facilities Bituminous Mixes	0.07	LS
639.23	Testing Facilities Concrete	0.25	LS
643.72	Temporary Traffic Signal	0.50	LS
652.31	Type I Barricade	20	EA
652.33	Drum	2	EA
652.34	Cone	10	EA
652.35	Construction Signs	200	SF
652.361	Maintenance of Traffic Control Devices	0.14	LS
652.38	Flagger	200	MH
659.10	Mobilization	0.20	LS

ESTIMATE OF LUMP SUM QUANTITIES			
202.127	Removing of Existing Bituminous Pavement	930	SY
508.13	Membrane Waterproofing	930	SY



GUARD RAIL CONNECTION



SECTION B-B

Temporary Traffic Signal Sequence of Timing						
	1	2	3	4	5	6
East	Green	Yellow	Red	Red	Red	Red
West	Red	Red	Red	Green	Yellow	Red
Timing (seconds)	8	3	19	8	3	19

General Construction Notes:

1. Reinforcing Steel shall have a 2 inch cover unless otherwise noted.
2. Protective coating for concrete surfaces shall be applied to all exposed surfaces of new concrete. Payment shall be considered incidental to related contract items.
3. Existing reinforcing steel to remain shall be cleaned as directed prior to placing new concrete.
4. The existing concrete shall be removed so as not to damage existing longitudinal and transverse reinforcing steel in the superstructure. Any damaged reinforcing steel shall be replaced at the Contractor's expense.
5. The Contractor's operations shall be conducted such that traffic will not travel on an unsurfaced concrete deck at any time. Existing bituminous pavement shall be removed and new bituminous pavement shall be placed to facilitate this requirement.
6. All utility facilities shall be adjusted by the respective utilities unless noted. Utilities: Central Maine Power, New England Telephone, Better Cable TV.
7. The top of the concrete slab where concrete has been removed or rehabilitated shall be prepared to a suitable surface to receive the membrane waterproofing by a method approved by the Engineer. Payment for all labor, materials, and equipment will be incidental to related contract items.
8. Payment for the terminal connectors, related hardware and installation will be made under Item 606.25 Terminal Connector.
9. Grading, furnishing and placing loam, seed and mulch on shoulder fore slopes shall be considered incidental to related contract items.
10. Unused portions of beam-type railing and posts will be delivered to the nearest MDOT maintenance yard. Payment will be considered incidental to Item 606.364 Guardrail, Remove, Modify and Reset.
11. Install one delineator post at the end of each section of approach rail. Payment for the delineator posts will be made under Item 606.35 Guardrail Delineator Post.
12. Removal and replacement of curb concrete shall be as approved by the Engineer. Payment will be considered incidental to the appropriate Bridge Joint Modification Pay Items.
13. Dimensions shown are from existing plans and may differ from actual field dimensions. Field verify all dimensions prior to construction.

LEGEND

- Existing Concrete (to remain)
- New Concrete
- Existing Concrete (to be removed)
- Existing Granite (to remain)

107-314 3

STATE OF MAINE
DEPARTMENT OF TRANSPORTATION

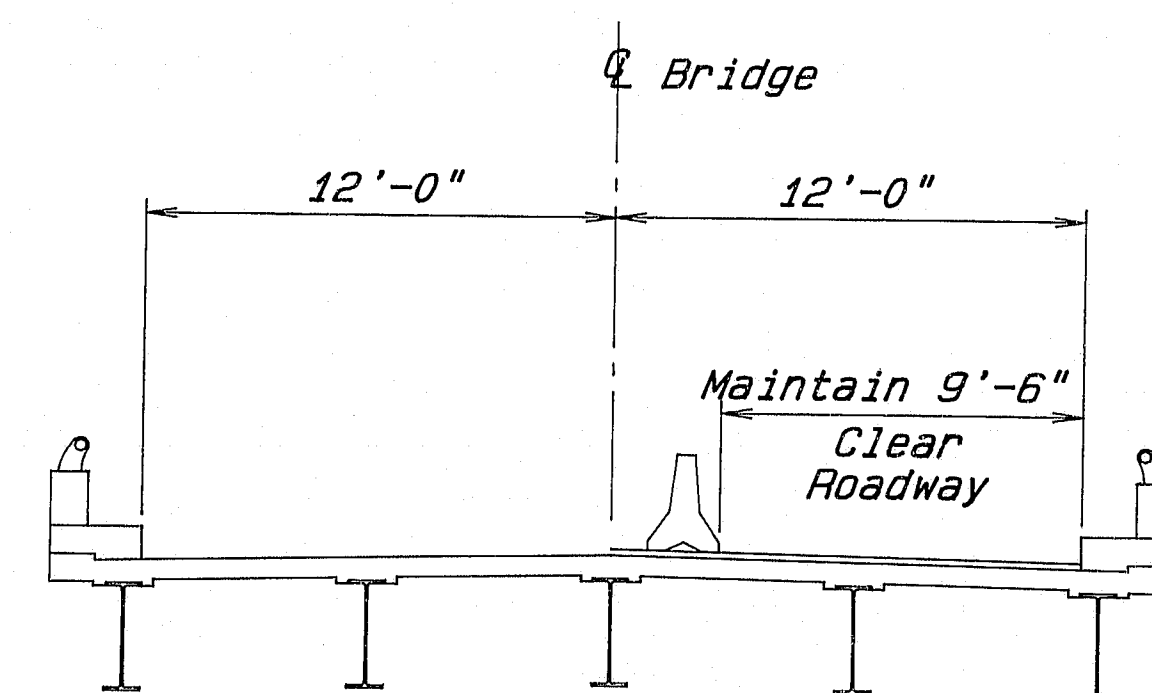
WEARING SURFACE REPLACEMENT
AT
TRAFON ROAD
OVER I-95
IN THE CITY OF
WATERVILLE
KENNEBEC COUNTY

ESTIMATED QUANTITIES & GENERAL NOTES

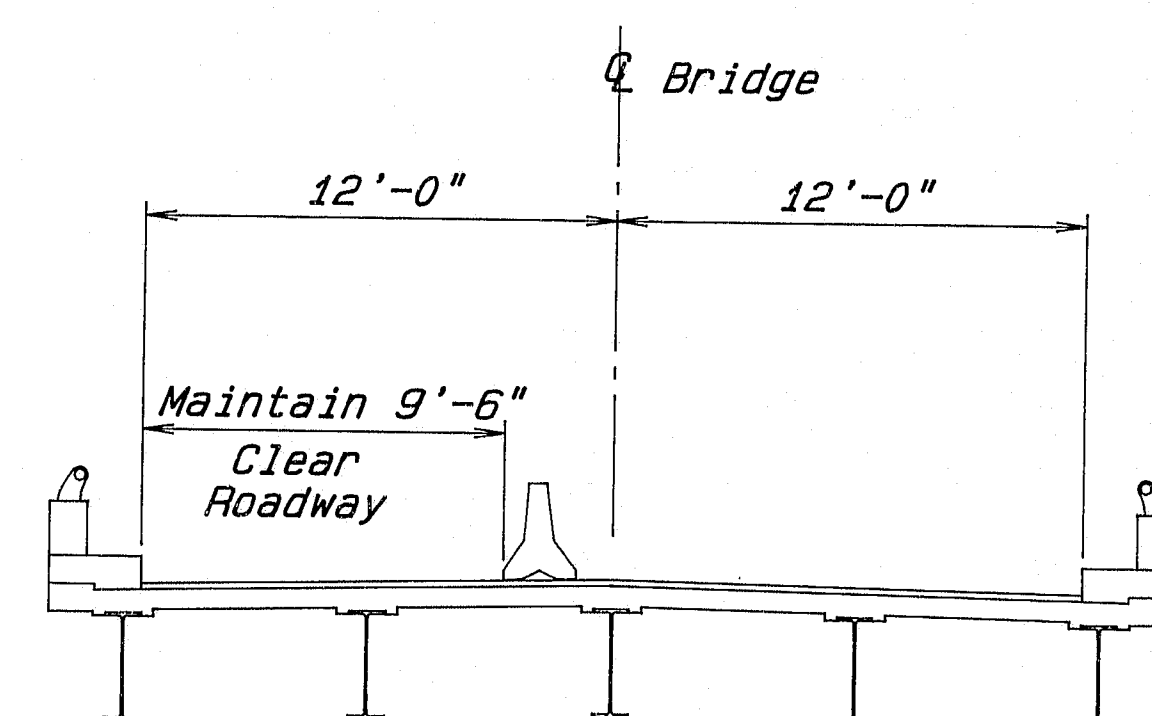
SHEET 2 OF 4 AUGUSTA, MAINE MAY 1992

PIN 804988.00

F.H.K.A. REV. NO.	STATE	PROJECT NUMBER	SHEET NO.	TOTAL SHEETS
1	MAINE	IR-IN-95-6(74)117	4	28



STAGE I



STAGE II

SEQUENCE OF CONSTRUCTION

STAGE I

Install traffic control devices to maintain one lane of traffic with signals on right side.

Remove existing bituminous pavement surface and membrane waterproofing on left side.

Rehabilitate superstructure slab.

Place membrane waterproofing and hot bituminous pavement base course.

Remove, modify and reset approach rail.

Add end post connections on left side.

Retrofit and seal joints at piers.

STAGE II

Install traffic control devices to maintain one lane of traffic with signals on left side.

Remove existing bituminous pavement surface and membrane waterproofing on right side.

Rehabilitate superstructure slab.

Place membrane waterproofing and hot bituminous pavement base course.

Place surface pavement in one continuous operation.

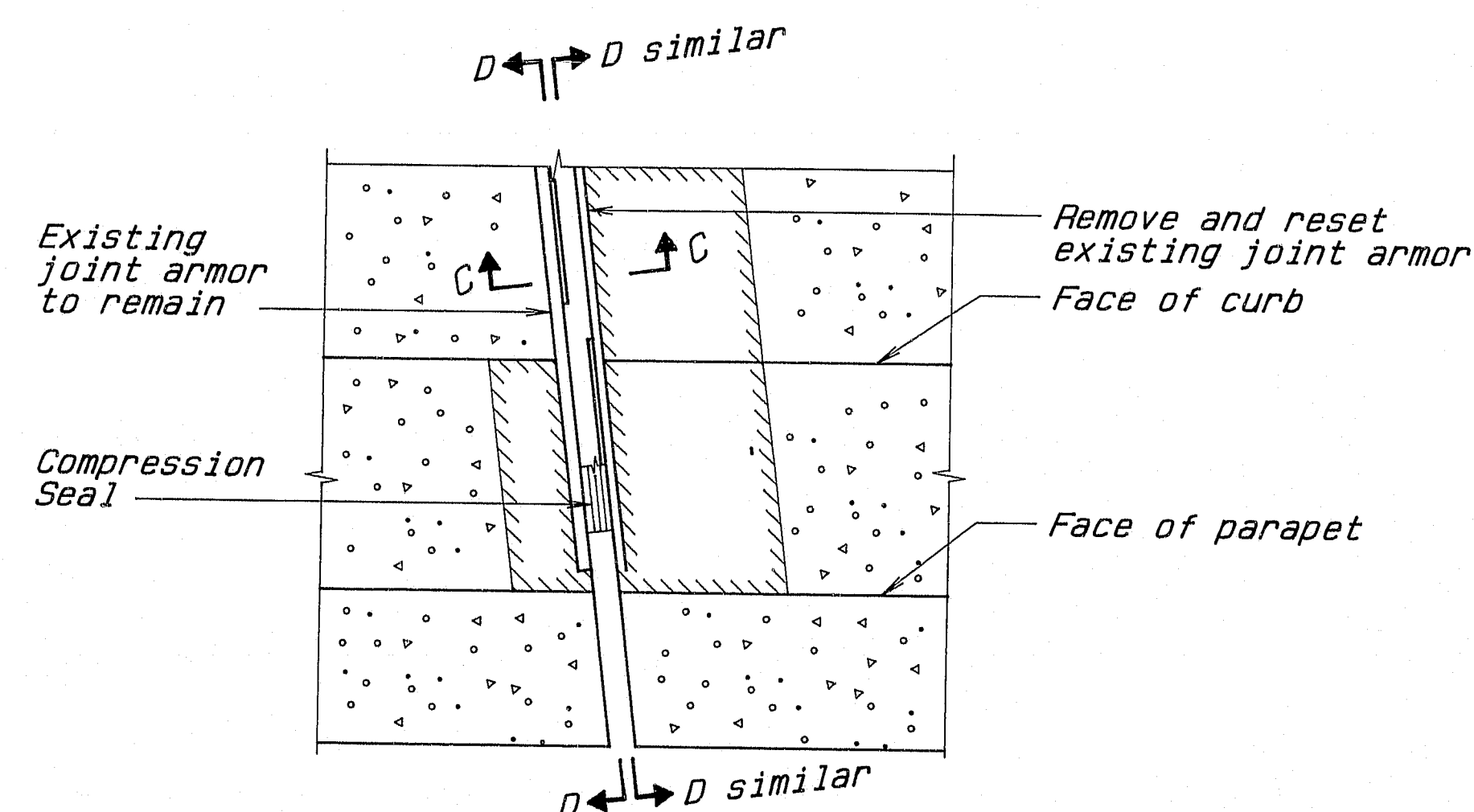
Remove, modify and reset approach rail.

Add end post connections on right side.

Retrofit and seal joints at piers.

As Built
1993
107-315 4

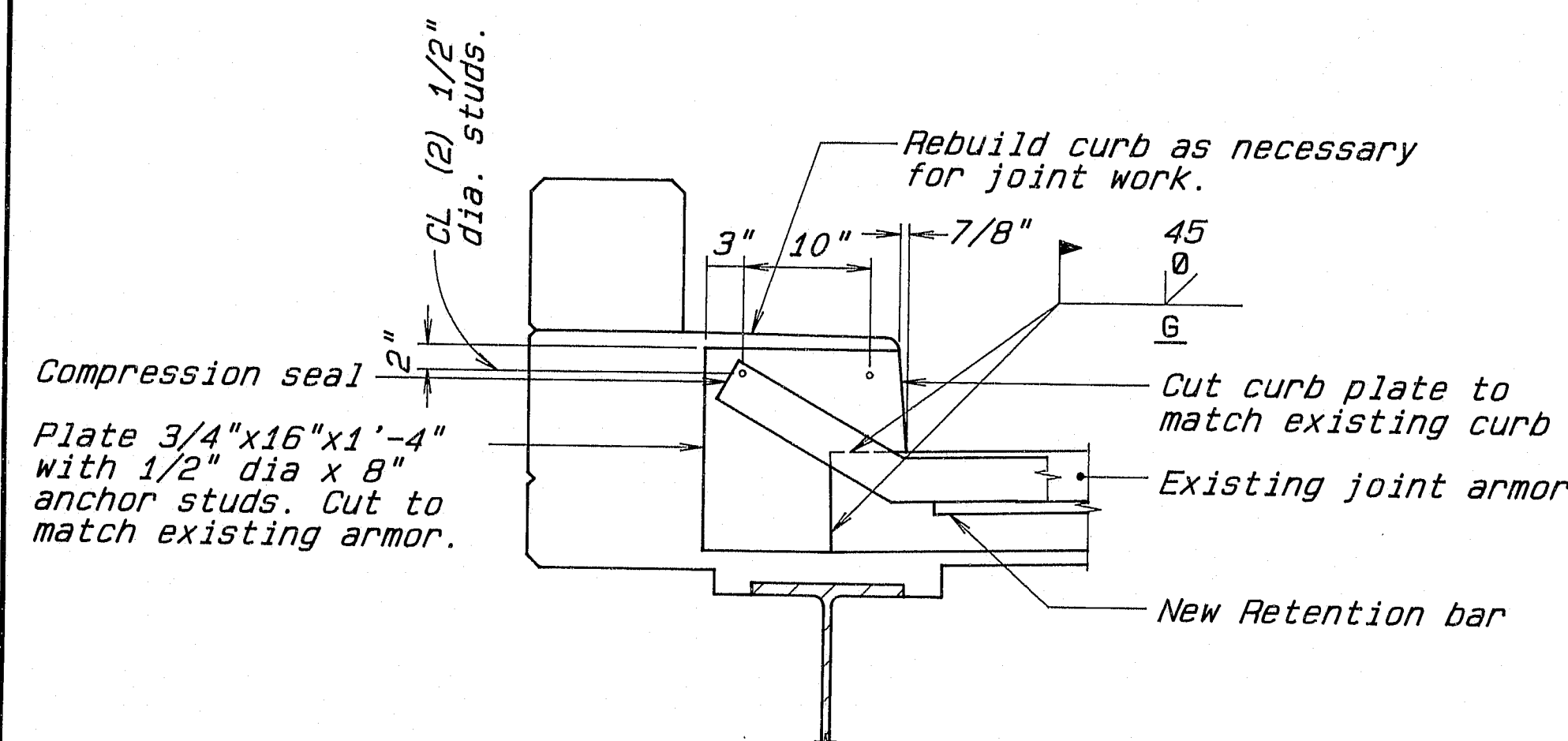
STATE OF MAINE DEPARTMENT OF TRANSPORTATION
WEARING SURFACE REPLACEMENT AT TRAFTON ROAD OVER I-95 IN THE CITY OF WATERVILLE KENNEBEC COUNTY
SEQUENCE OF CONSTRUCTION
SHEET 3 OF 4 AUGUSTA, MAINE MAY 1992



BRIDGE JOINT MODIFICATION

TYPE I

Piers 1, 2, 4 & 5

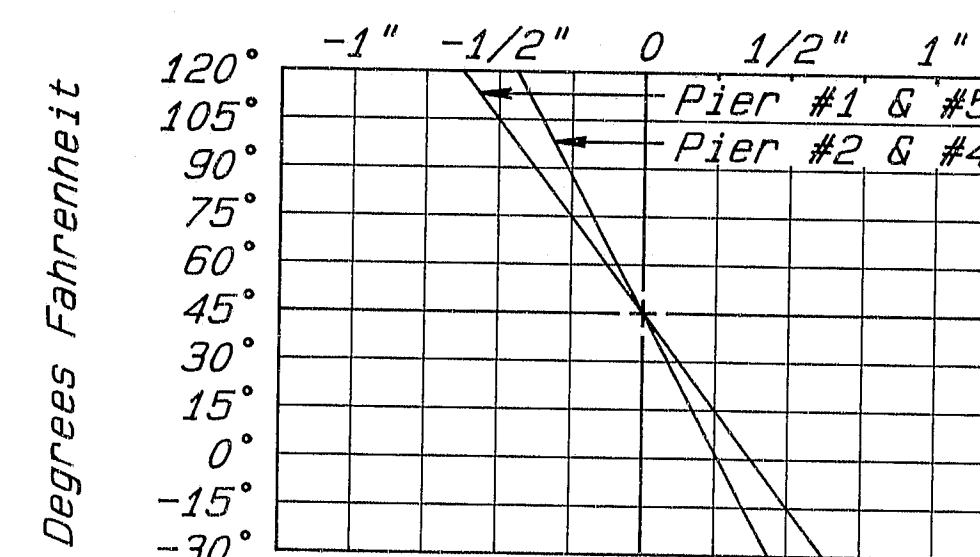


SECTION D-D

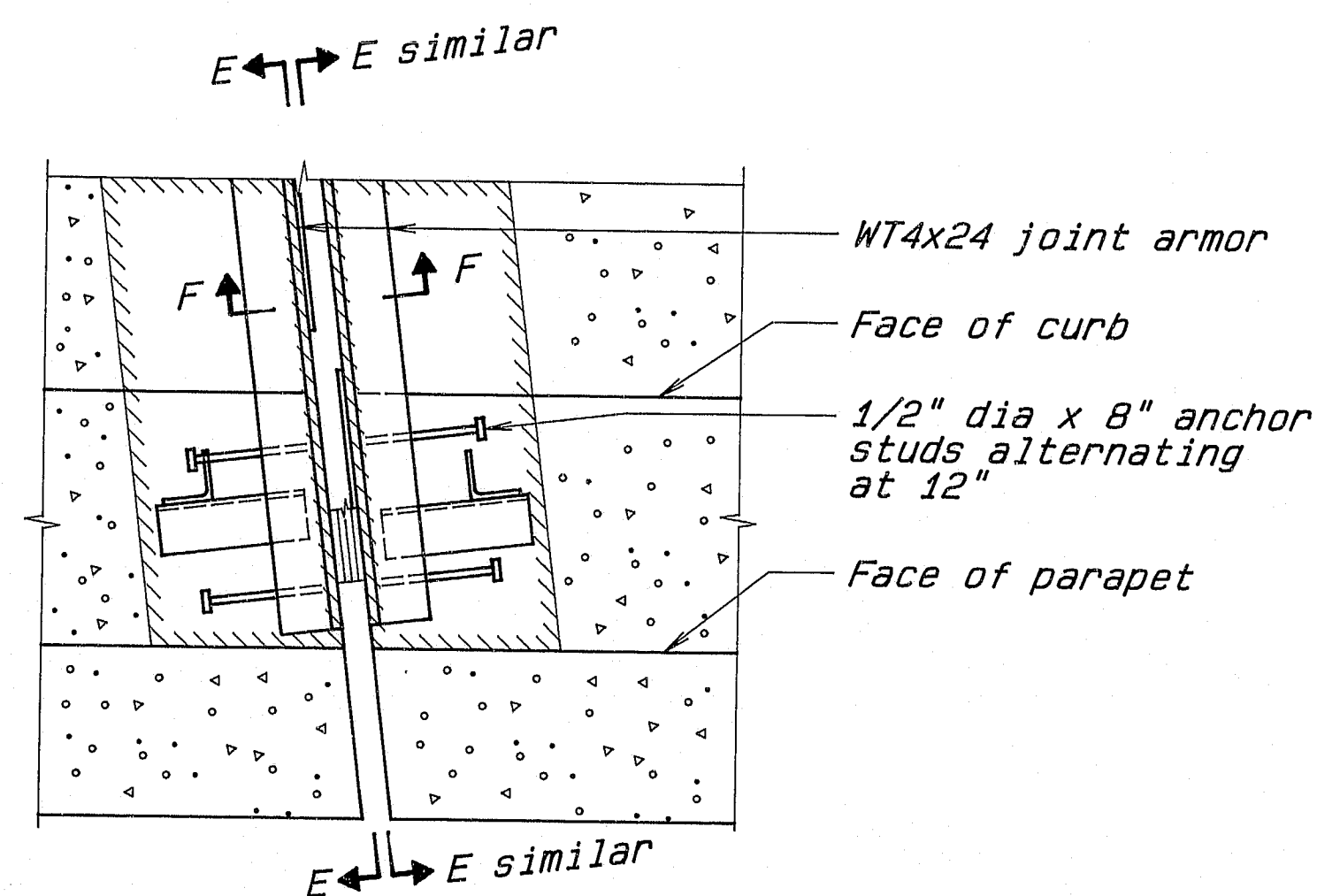
(Similar opposite hand)

Compression Seal Notes

- The seals to be furnished shall have a Movement Rating of:
Pier No. 1 = 1/4", Pier No. 2 = 7/8", Pier No. 3 = 1/2",
Pier No. 4 = 7/8", Pier No. 5 = 1 1/4"
- The seal shall be approved by the Engineer prior to fabrication of the joint armor.
- The joint opening "X" will vary depending on the dimensions of the seal selected by the Contractor. The joint opening shall be set according to the opening shown on the approved shop detail drawings.
- Final adjustment for temperature shall be made in the field according to the "Compression Seal Adjustment Chart". Adjustment shall be measured parallel to the center line of construction.
- The upturned ends of the compression seals shall be sealed in a manner approved by the Engineer.



COMPRESSION SEAL ADJUSTMENT CHARTS

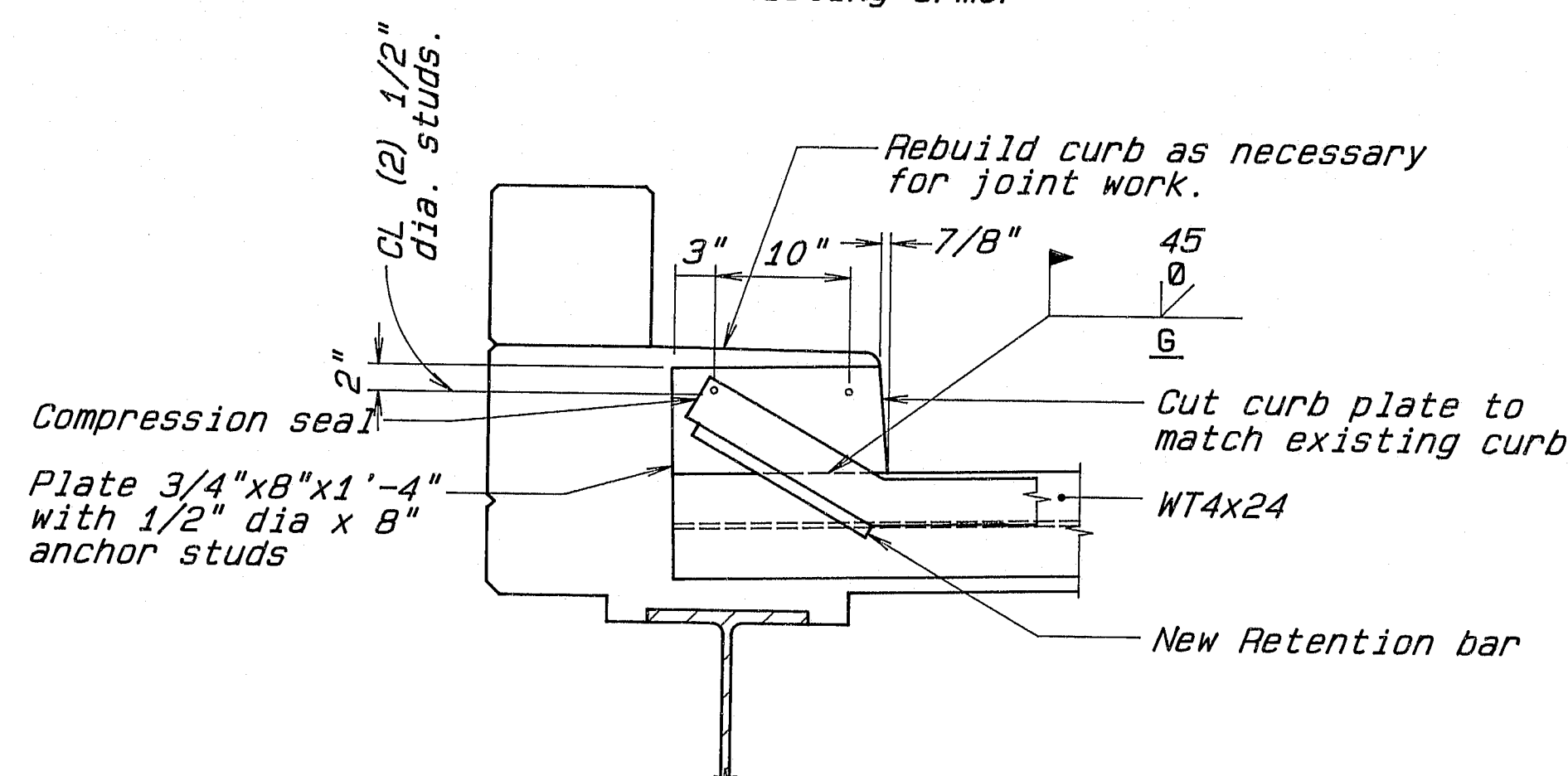


BRIDGE JOINT MODIFICATION

TYPE II

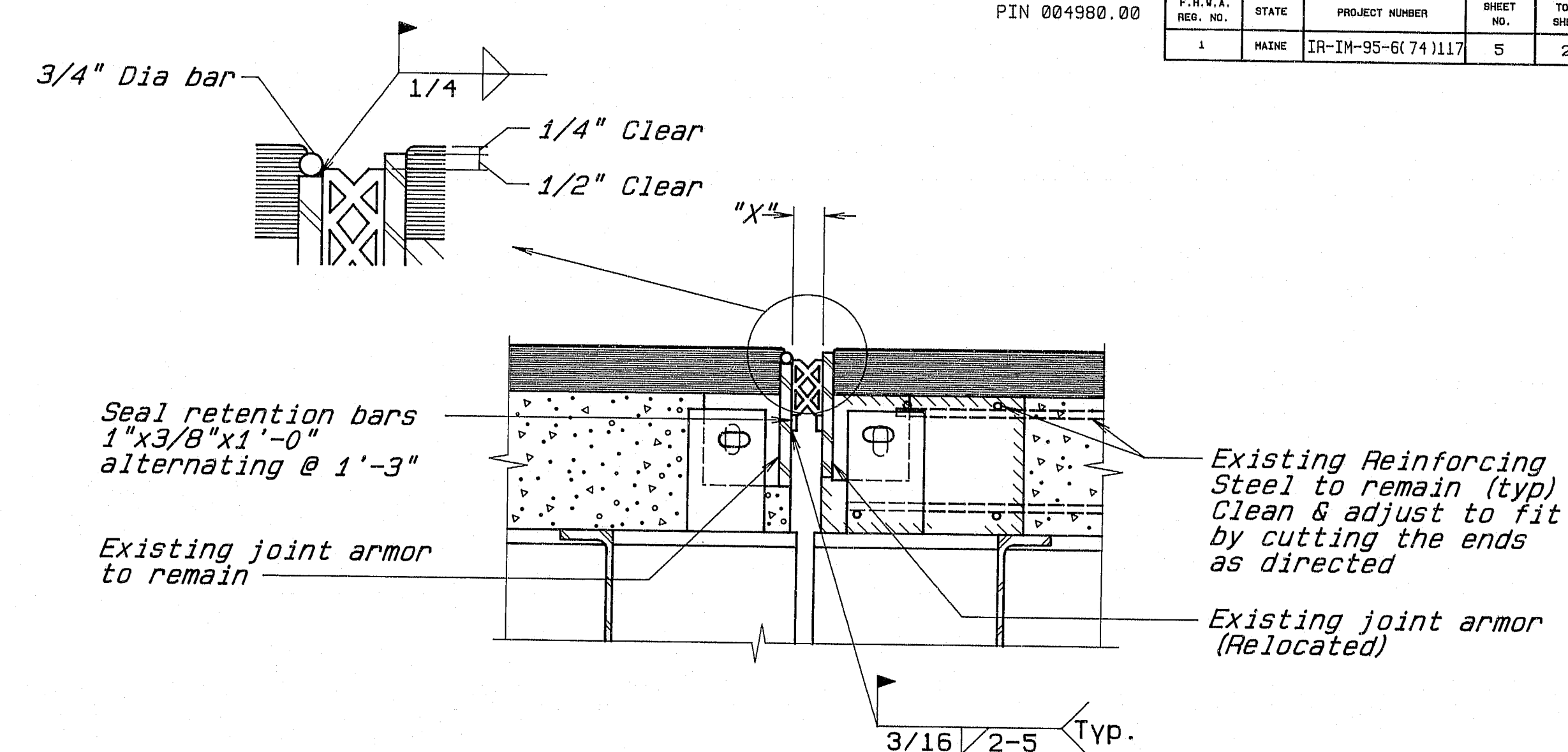
Pier 3

Note: No existing armor



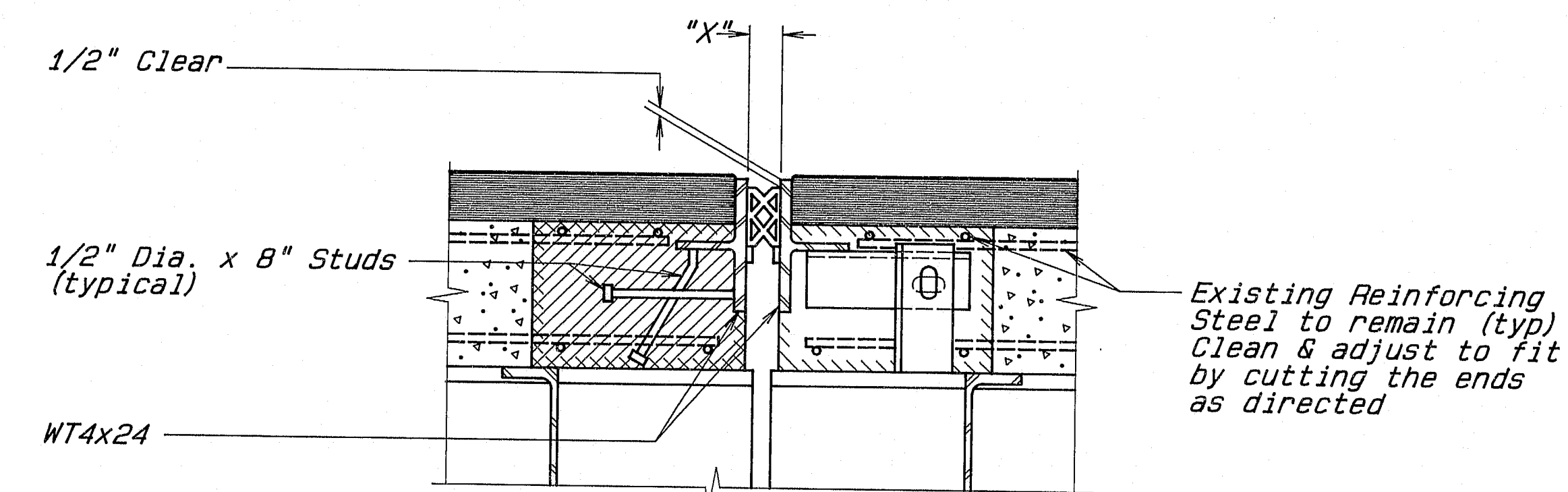
SECTION E-E

(Similar opposite hand)



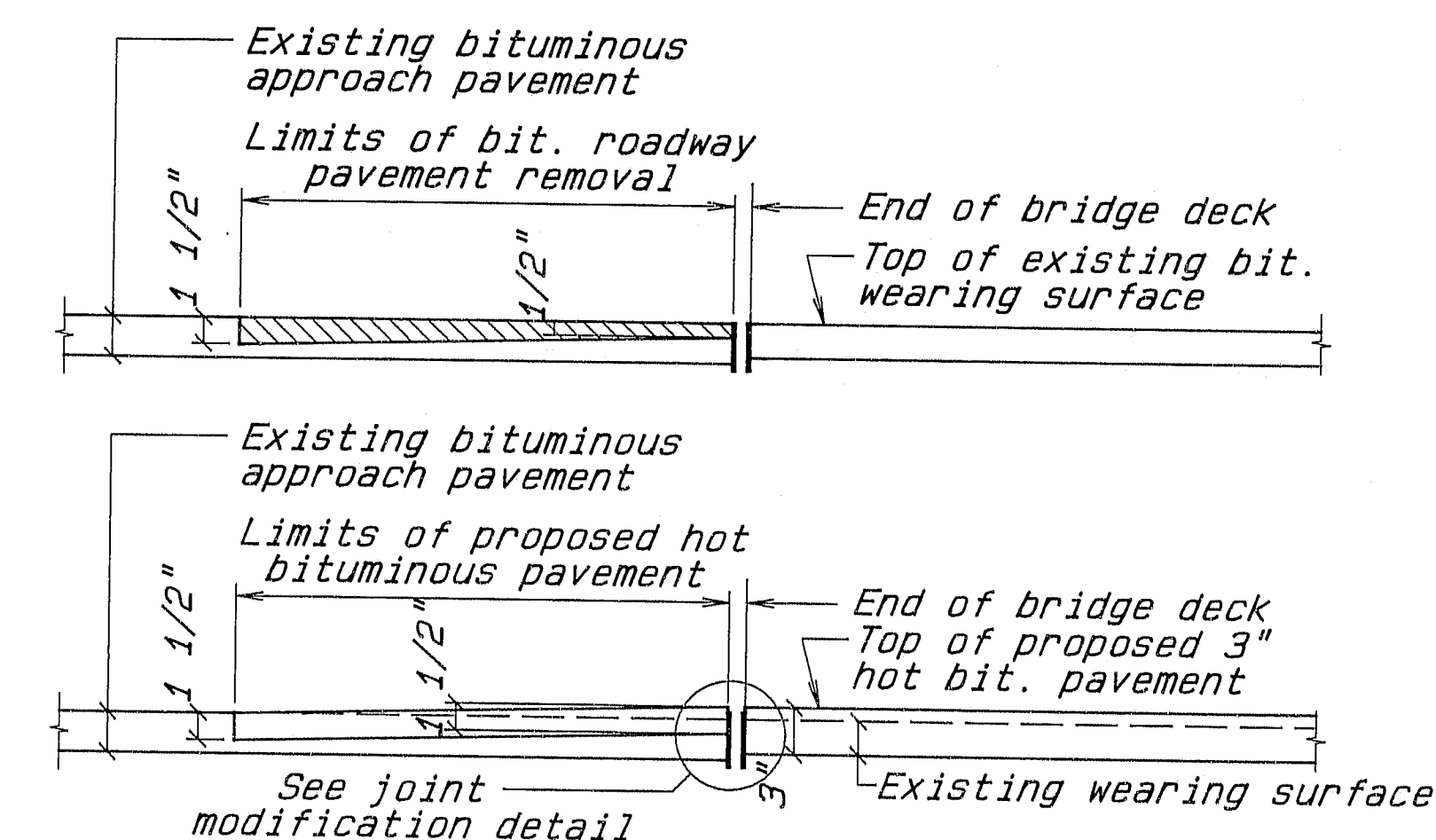
SECTION C-C

Piers 1, 2, 4 & 5
(Refer to BD 301-89 for details not shown)



SECTION F-F

Pier 3
(Refer to BD 301-89 for details not shown)



APPROACH PAVEMENT TRANSITION DETAIL

107-316 5

STATE OF MAINE
DEPARTMENT OF TRANSPORTATION
WEARING SURFACE REPLACEMENT
AT
TRAFTON ROAD
OVER I-95
IN THE CITY OF
WATERVILLE
KENNEBEC COUNTY
JOINT DETAILS

SHEET 4 OF 4 AUGUSTA, MAINE MAY 1992