

## 2023 Demographic Profile of Maine

MaineDOT has gathered a demographic profile of the State of Maine that includes identification of the locations of minority populations in the aggregate, and developed demographic maps that overlay the percent minority, non-minority and non-native-born populations as identified by the U.S. Census or American Community Survey data. We have compiled that data by county, below. MaineDOT's most recent data assessment was done in 2021. MaineDOT will update this information as it becomes available.

### **Demographic Profile of Minorities and Non-American National Origin by County.**

Based on the 2021 United States Bureau of the Census, American Community Survey 5-Year Estimates (most recent information available), Maine has a small but growing minority population that is geographically spread across the state. In fact, 14 of Maine's 16 counties have minority populations of greater than 5%, and the remaining two counties have seen increases in their minority populations, according to the most recent available data. The summary table below shows white and minority populations for each of the counties. White is defined as one race, White alone, not Hispanic or Latino. Minority is defined as Hispanic or Latino or Latino, Black or African American, Asian, Native Hawaiian or Pacific Islander, American Islander, American Indian or Alaska Native, Other race or Multi-racial. Maine as a whole has an estimated minority of 7.99%.

Approximately 66% of Maine's minority population lives in four counties:

- Androscoggin County: 11, 571 people of whom approximately 62% live in urban Auburn and Lewiston.
- Cumberland County: 34,026 people, of whom approximately 66% live in the Portland metropolitan area (Portland and Scarborough).
- Penobscot County: 11,142 people of whom approximately 78%, live in the Bangor metropolitan area (Bangor, Brewer, Old Town, Orono, Veazie and Hampden).
- York County: 15,858 people, of whom approximately 36% live in Biddeford, Saco and Old Orchard Beach.

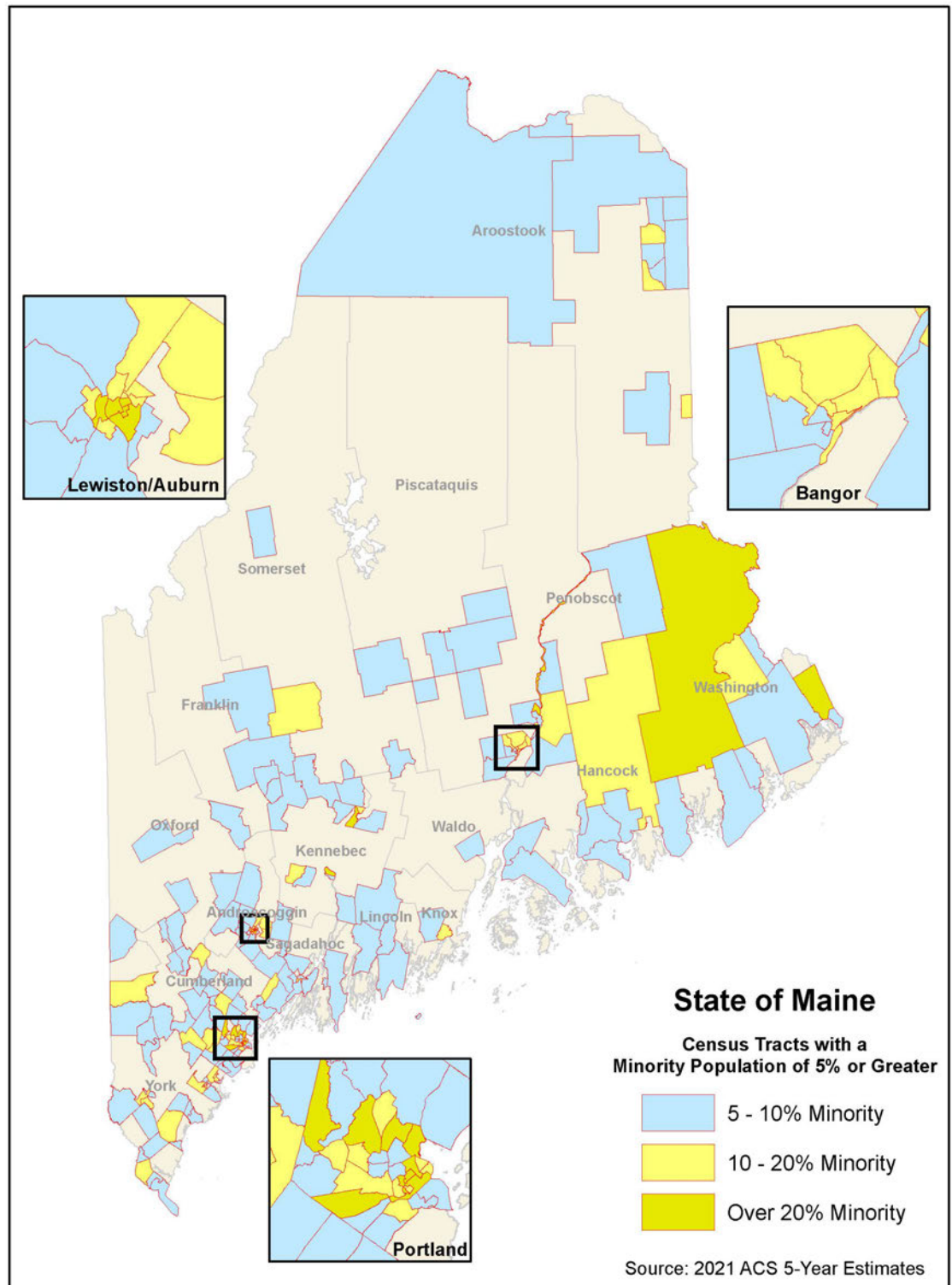
Cumberland and Washington Counties have the greatest percentages of minority populations with 11.31% and 11.26% respectively, while Androscoggin County follows with 10.48%. The Washington County minority population is comprised of the Native American Passamaquoddy Tribe, with some Penobscot and Maliseet presence. There is a Latin community in southern Washington County (and northern Hancock County) as well. The Androscoggin County minority population is comprised primarily of African immigrants. Otherwise, the metropolitan areas of Androscoggin and Cumberland Counties account for minority population concentrations.

The following identifies minority populations by county:

<b>State of Maine</b> <b>Race Demographics by</b> <b>State/County</b>				
<b>Count y</b>	<b>Total Population 2021</b>	<b>White #</b>	<b>Minority #</b>	<b>Minorit y %</b>
<b>Maine</b>	<b>1,357,046</b>	<b>1,248,581</b>	<b>108,465</b>	<b>7.99%</b>
Androscoggin	110,378	98,807	11,571	10.48%
Aroostook	67,272	62,809	4,463	6.36%
Cumberland	300,776	266,750	34,026	11.31%
Franklin	29,487	28,021	1,466	4.97%
Hancock	55,417	52,117	3,300	5.95%
Kennebec	123,293	115,799	7,494	6.08%
Knox	40,519	38,390	2,129	5.25%
Lincoln	35,065	33,053	2,012	5.74%
Oxford	57,807	54,379	3,428	5.93%
Penobscot	152,211	141,069	11,169	7.32%
Piscataquis	16,760	15,645	1,115	6.65%
Sagadahoc	36,530	34,210	2,320	6.35%
Somerset	50,424	48,011	2,413	4.79%
Waldo	39,618	37,382	2,236	5.64%
Washington	31,003	27,511	3,492	11.26%
York	210,486	194,628	15,858	7.53%

Source: 2021 United States Bureau of the Census American Community Survey 5-year Estimates

The map on the following page identifies minority populations by county:



## Non-American National Origin

The map representing data on the national origin of Maine residents is similar in many ways to the map of minorities. The core of Cumberland County again has the highest percentage of non-American born persons. The St. John Valley of northernmost Aroostook County has several towns with large numbers of non-native born residents. Towns in this area along the border with Canada show up more prominently on this map than the minorities map, reflecting a higher representation of French Canadians. The map of concentrations of non-American born residents shows many of these border towns with percentages higher than the state average though most of these towns are sparsely populated. Cumberland and Androscoggin Counties have concentrations of non-native born people due to the Maine Refugee Resettlement Program centered in Portland (Cumberland County) and Lewiston (Androscoggin County). There are relatively few towns in the western and eastern areas of the state with concentrations of non-natives, other than clusters around Augusta and Bangor.

County	Total Population 2021	Native Born #	Native Born %	Foreign Born %
<b>Maine</b>	<b>1,357,046</b>	<b>1,307,743</b>	<b>96.4%</b>	<b>3.6%</b>
Androscoggin	110,378	106,373	96.4%	3.6%
Aroostook	67,272	64,503	95.9%	4.1%
Cumberland	300,776	282,508	93.9%	6.1%
Franklin	29,487	28,925	98.1%	1.9%
Hancock	55,417	53,865	97.2%	2.8%
Kennebec	123,293	120,552	97.8%	2.2%
Knox	40,519	39,338	97.1%	2.9%
Lincoln	35,065	34,300	97.8%	2.2%
Oxford	57,807	56,966	98.5%	1.5%
Penobscot	152,211	147,648	97.0%	3.0%
Piscataquis	16,760	16,330	97.4%	2.6%
Sagadahoc	36,530	35,334	96.7%	3.3%
Somerset	50,524	49,611	98.4%	1.6%
Waldo	39,618	38,766	97.8%	2.2%
Washington	31,003	29,951	96.6%	3.4%
York	210,486	202,773	96.3%	3.7%

Source: 2021 United States Bureau of the Census, American Community Survey 5-year Estimates

The map on the following page identifies Non-American National Origin populations by county.

