

Houlton #7750

88 0.42 B&A.R.R.Co. Dead River Co. Warranty Deed October '76 Vol. 1270, Page 69 Dec. 3, '76 604-F-X-8
 89 0.20 B&A.R.R.Co. Maurice Callan G.C. Sept. '76 Vol. 1262, Page 41 Oct. 15, '76 602-Y-4
 90 0.37 B.I. Co. Houlton Truck Garage Warranty Deed B & A R R Co. 603-E-1-1, 604-E-2-Y-1
 91 0.57 B.I. Co. G.W. & C.B. Hogan April '82 603-B-7-2
 92 0.47 B & A R R Co. G.W. & C.B. Hogan NARRANTY NOV. 29, 1984 VOL. 1730, PAGE 341 MAR. 6, 1985 603-B-X-3
 93 0.11 J.P. McCLUSKEY B.I.A.R.R.Co. L.L.S. HORTEN MAR. 1986 604-F-X-9, 604-G-X-1
 94 1.30 B & A R R Co. L.L.S. HORTEN MAR. 1986 604-F-X-9, 604-G-X-1
 Doc. #1170 VRMP Cert THOMPSON 01.171E Dec. 19 1901 Vol. 341, Page 93 Jan. 12, 2002 DOCUMENT FILE #1270

NO. ACRES	GRANTOR	GRANTEE	INSTRUMENT	DATE	RECORD	CUST. NO.
13	A. W. Ingalls	B & A R R Co.	Q. C. Deed	Jan. 2, 1893	Vol. 135 Page 4 Feb. 17, 1893	599
14	"	"	Warranty	Jan. 6, 1894	Vol. 133 Jan. 8, 1894	600
15	A. A. Burleigh	"	"	Nov. 27, 1900	Vol. 144 Jan. 31, Dec. 24, 1900	602
16	H. R. Burleigh	"	"	Jan. 7, 1909	Vol. 236 Jan. 3, 1909	603-B
17	R. T. Prentiss Co.	"	Cond'l	Oct. 11, 1902	Vol. 217 449 Oct. 13, 1906	603-A
18	A. A. Burleigh	"	Admin.	June 1, 1895	Vol. 149 289 Oct. 16, 1895	604
19	Swift & Co.	"	Cond'l	Mar. 20, 1906	Vol. 217 111 Oct. 23, 1906	604A-1 REVERTED
20	F. W. Titcomb	"	O.C.	May 12, 1893	Vol. 135 10 May 13, 1893	601
21	H. R. Burleigh	"	Warranty	May 21, 1902	Vol. 130 541 May 24, 1902	603
22	T. J. Brown	"	"	Oct. 17, 1896	Vol. 134 76 Feb. 6, 1897	605
23	R. E. Sanford	"	"	July 2, 1894	Vol. 134 14 Feb. 21, 1895	606
24	S. J. Parrish	"	"	July 10, 1894	Vol. 134 143 Feb. 21, 1895	607
25	B. H. Putnam	"	C. C. Award	July 5, 1892	Vol. 8 291 C. C. Record	608
26	Houlton Water Co.	"	Warranty Deed	July 27, 1899	Vol. 180 217 Oct. 30, 1900	609
27	"	"	Cond'l	Dec. 20, 1900	Vol. 180 359 Dec. 21, 1909	610 PARTIAL REVERSION
40	H. R. Burleigh et al.	"	O.C.	Jan. 3, 1916	Vol. 285 292 Jan. 5, 1916	599-A REVERTED
41	Houlton Grange	"	Cond'l	Oct. 8, 1917	Vol. 329 99 May 10, 1921	600-A REVERTED
43	"	"	"	Apr. 23, 1921	Vol. 369 306 May 26, 1921	604-B REVERTED
44	William Watts	"	Warranty	May 11, 1921	Vol. 369 425 July 2, 1921	604-C
45	Herrut A. Merrill et al.	"	"	May 19, 1921	Vol. 369 425 July 2, 1921	604-C
46	R. M. Hamilton et al.	"	"	June 21, 1921	Vol. 373 163 June 22, 1921	604-D Conveys 3/4 interest
46	"	"	Guardians	July 19, 1921	Vol. 373 235 Aug. 9, 1921	604-D-1 " 1/4 "
46	"	"	"	Oct. 7, 1921	Vol. 372 103 June 29, 1921	604-D-2
47	Bangor Investment Co.	"	O.C.	Oct. 7, 1921	Vol. 373 355 Oct. 11, 1921	604-E-1
48	"	"	"	"	"	"
49	"	"	"	"	"	"
50	"	"	"	"	"	"
51	Houlton Water	"	Cond'l	Dec. 26, 1927	Vol. 372 448 Apr. 13, 1928	610-A REVERTED
52	B. I. Co.	"	O.C.	Aug. 30, 1928	Vol. 379 25 Sept. 19, 1928	604-E-2
55 3.04	B & A R R Co.	B. I. Co.	"	Nov. 6, 1929	Vol. 396 217 Nov. 23, 1929	603-B-X-1
56 .22	"	"	"	Nov. 6, 1929	Vol. 396 217 Nov. 23, 1929	604-F-X-1 Filed with 603-B-X-1 Land sold to Dead River in 1976
55 .02	B. I. Co.	B & A R R Co.	"	Dec. 30, 1939	Vol. 470 26 Jan. 14, 1939	604-F-2
60 .03	Swift & Co.	"	O.C.	Mar. 21, 1936	Vol. 441 491 June 22, 1936	604-A-2
61 .09	B. I. Co.	"	"	Apr. 26, 1937	Vol. 451 469 Sept. 21, 1937	604-F-3
62	Houlton Water Co.	"	Warranty	June 22, 1938	Vol. 463 549 June 30, 1938	609-A
63 .059	B & A R R Co.	L. O. Ludwig	Annexation	June 18, 1949	Vol. 606 269 Feb. 4, 1949	604-F-X-2
65 .052	"	"	"	June 14, 1949	Vol. 614 143 Aug. 15, 1949	603-C
67 1.38	L. E. Burleigh	B & A R R Co.	Warranty	July 2, 1963	Vol. 886 263 July 2, 1963	602-A
68 0.75	B & A R R Co.	"	"	Oct. 20, 1964	Vol. 927 378 Oct. 26, 1964	604-F-X-3
69 0.07	"	"	"	"	Vol. 927 381 Oct. 26, 1964	604-F-X-4
70 0.29	"	"	"	"	Vol. 909 325 Mar. 30, 1966	604-F-X-5
71 0.12	"	"	"	July 20, 1964	Vol. 921 144 Aug. 19, 1964	602-X-1
72 0.052	"	"	"	Aug. 24, 1964	Vol. 924 224 Oct. 19, 1964	602-X-2
73 0.11	"	"	"	Dec. 15, 1968	Vol. 1037 524 Dec. 17, 1968	604-F-X-6
75 0.11	"	"	"	Nov. 23, 1969	Vol. 1238 637 Feb. 6, 1969	603-B-X
76 2.8	"	"	"	Nov. 14, 1968	Vol. 1046 489 May 8, 1969	604-F-X-7
84 0.055	"	"	"	Sept. 19, 1968	Vol. 1085 191 July 2, 1969	604-F-X-1
85 0.57	"	"	"	Oct. 1, 1968	Vol. 1044 381 May 26, 1969	602-X-1
86 0.23	"	"	"	June 14, 1979	Vol. 1158 679 July 22, 1979	605-X-1
87 0.11	"	"	"	July 1, 1974	Vol. 1158 679 July 22, 1974	602-X-3

STATION MAP BANGOR & AROOSTOOK R.R. CO.

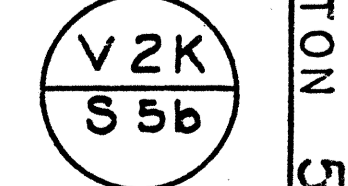
OAKFIELD TO CARIBOU

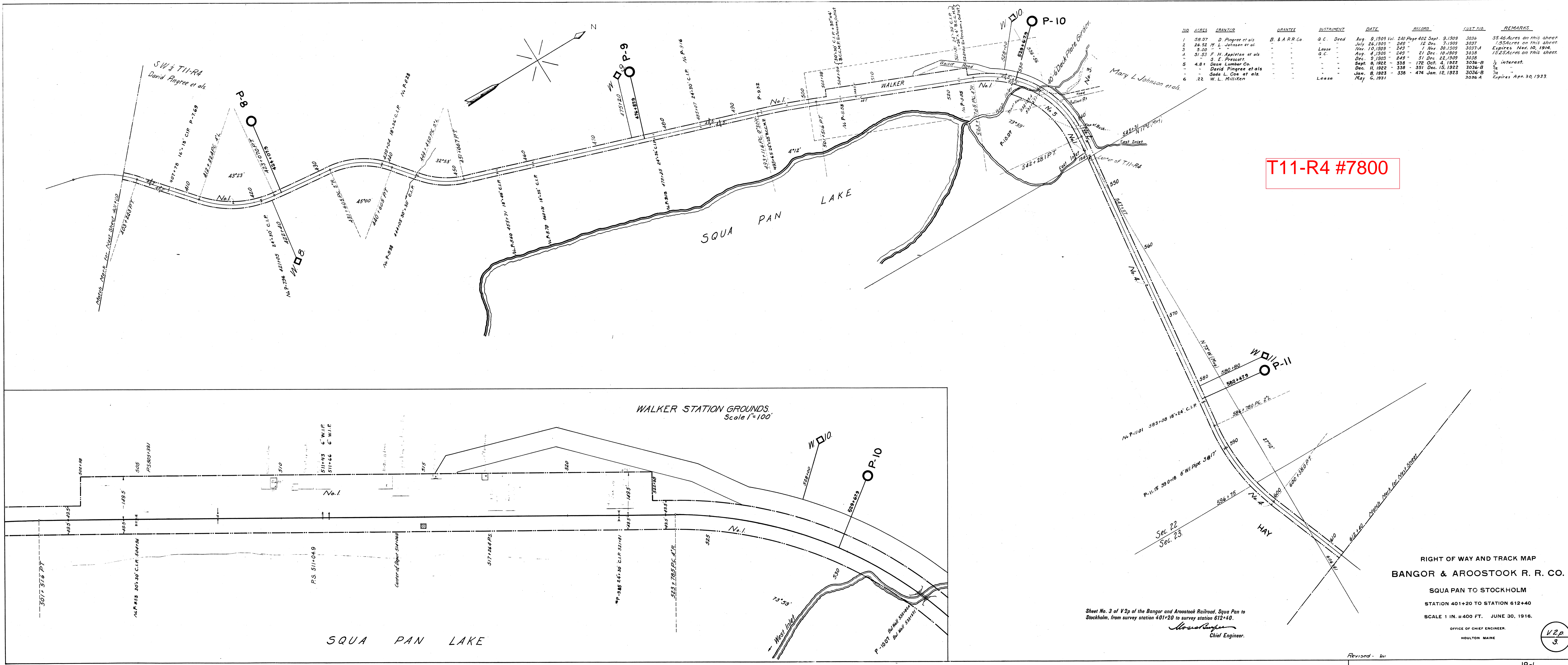
STATION 4959+00 TO STATION 5+50

SCALE 1 IN. = 100 FT. JANUARY 24, 1950

OFFICE OF CHIEF ENGINEER HOULTON ME.

REVISED 2-28 1-19 12-24 3-26 5-86





NO.	ACRES	GRANTOR	GRANTEE	INSTRUMENT	DATE	RECORD	CUST. NO.	REMARKS
1	58.97	D. Pingree et als	B. & A. R. R. Co.	Q.C. Deed	Aug. 9, 1909	Vol. 240 Page 402	3036	35.46 Acres on this sheet
2	26.52	M. L. Johnson et al.	"	"	July 26, 1909	" 249 "	3037	1.53 Acres on this sheet
3	5.00	"	"	Lease	Nov. 10, 1909	" 249 "	3037-A	Expires Nov. 10, 1914.
4	51.53	F. H. Appleton et als	"	Q.C.	Aug. 4, 1909	" 249 "	3038	15.25 Acres on this sheet
		S. E. Prescott	"	"	Dec. 9, 1909	" 249 "	3038	
5	4.8	Dean Lumber Co.	"	"	Sept. 8, 1922	" 338 "	3036-B	1/2 interest.
		David Pingree et als	"	"	Dec. 11, 1922	" 338 "	3036-B	1/2 "
		Sada C. Cox et als.	"	"	Jan. 8, 1923	" 338 "	3036-B	1/2 "
6	22	W. L. Milliken	"	Lease	May 6, 1931	" 338 "	3036-A	Expires Apr. 30, 1933.

T11-R4 #7800

WALKER STATION GROUNDS.
Scale 1"=100'

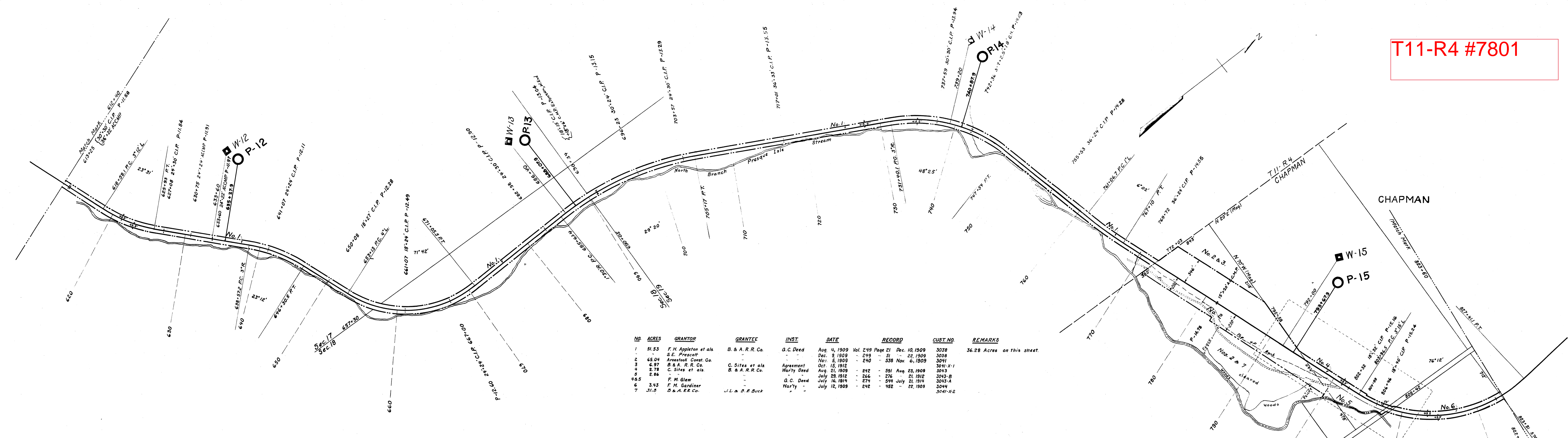
RIGHT OF WAY AND TRACK MAP
BANGOR & AROOSTOOK R. R. CO.
SQUA PAN TO STOCKHOLM
STATION 401+20 TO STATION 612+40
SCALE 1 IN. = 400 FT. JUNE 30, 1916.
OFFICE OF CHIEF ENGINEER.
HOULTON MAINE

Sheet No. 3 of V2p of the Bangor and Aroostook Railroad, Squa Pan to Stockholm, from survey station 401+20 to survey station 612+40.
W. S. Houlton
Chief Engineer.

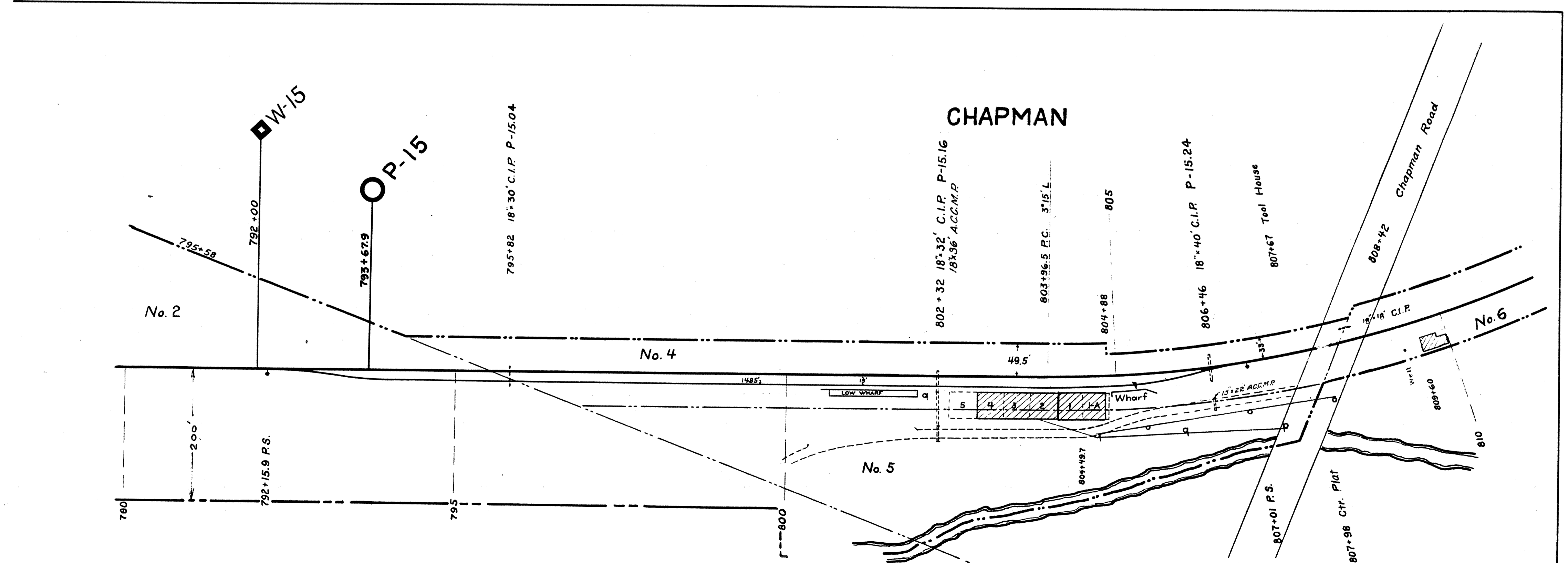
WALKER 100

V2p
3

T11-R4 #7801

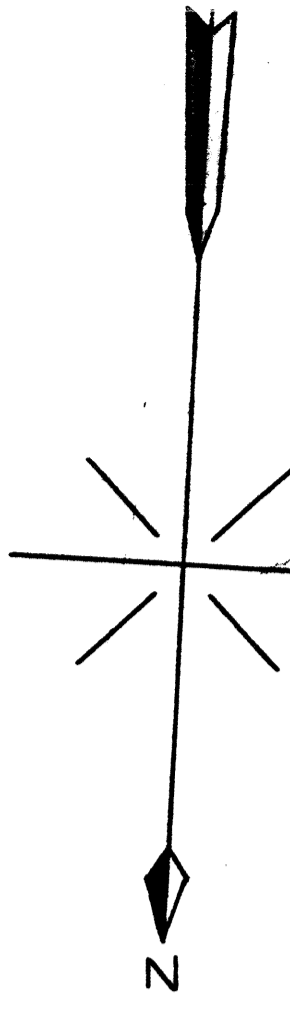


NO.	ACRES	GRANTOR	GRANTEE	INST.	DATE	RECORD	CUST. NO.	REMARKS
1	51.53	F. H. Appleton et als S. E. Prescott	B. & A. R. R. Co.	G. C. Deed	Aug. 4, 1909	Vol. 249 Page 21	Dec. 10, 1909 3038	36.28 Acres on this street.
2	65.04	Aroostook Const. Co.	B. & A. R. R. Co.	Agreement	Dec. 9, 1909	- 249 - 31	22, 1909 3038	
3	6.97	B. & A. R. R. Co.	C. Sites et als	Agreement	Nov. 5, 1909	- 240 - 338	Nov. 6, 1909 3041	
4	2.78	C. Sites et als	B. & A. R. R. Co.	Warranty Deed	Oct. 15, 1912	- 242 - 291	Aug. 23, 1909 3043	3041-X-1
5	2.86	C. Sites et als	B. & A. R. R. Co.	Warranty Deed	Aug. 21, 1909	- 242 - 276	Aug. 23, 1909 3043	3043-B
6	46.5	F. M. Glew	B. & A. R. R. Co.	G. C. Deed	July 23, 1912	- 244 - 544	July 21, 1914 3044	3043-A
7	3.43	F. M. Gardiner	B. & A. R. R. Co.	Warranty Deed	July 16, 1914	- 242 - 492	July 22, 1909 3044	3044-X-2
8	31.2	B. & A. R. R. Co.	J. L. & D. R. Buck	Warranty Deed	July 12, 1909	- 242 - 492	July 22, 1909 3044	3044-X-2



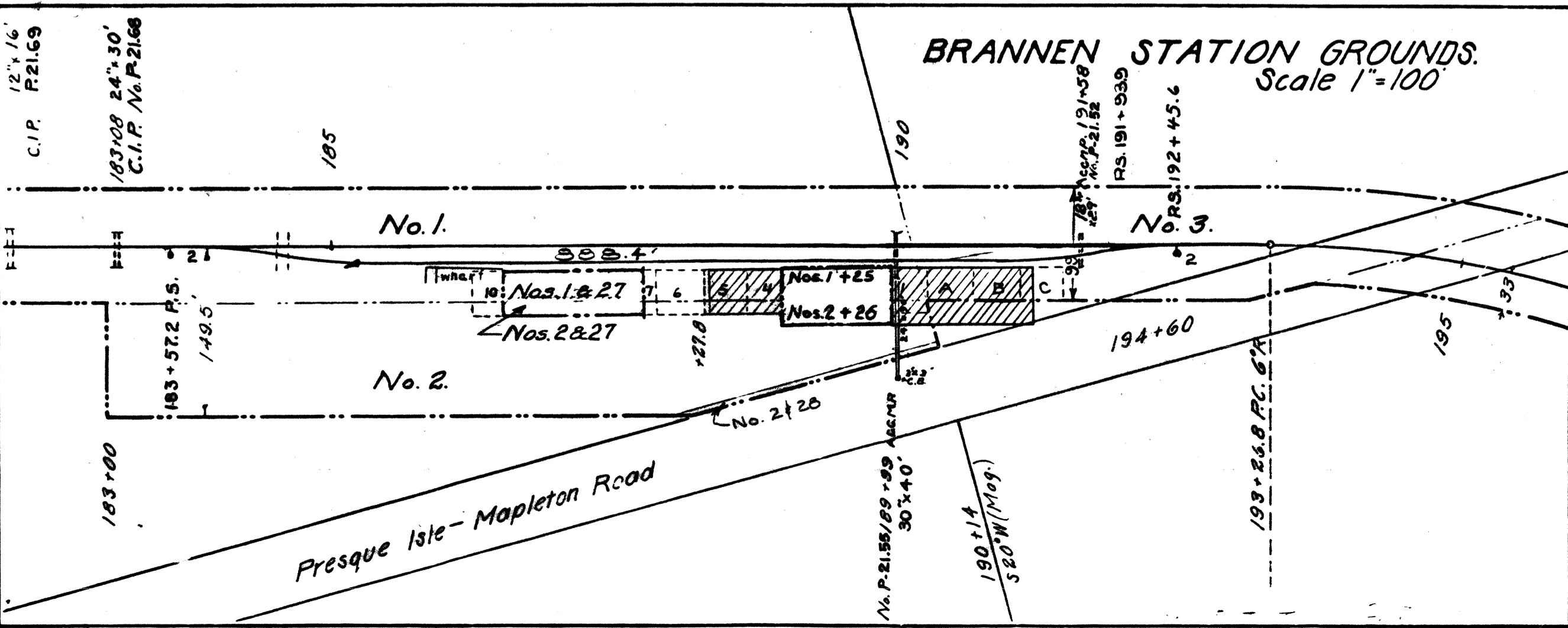
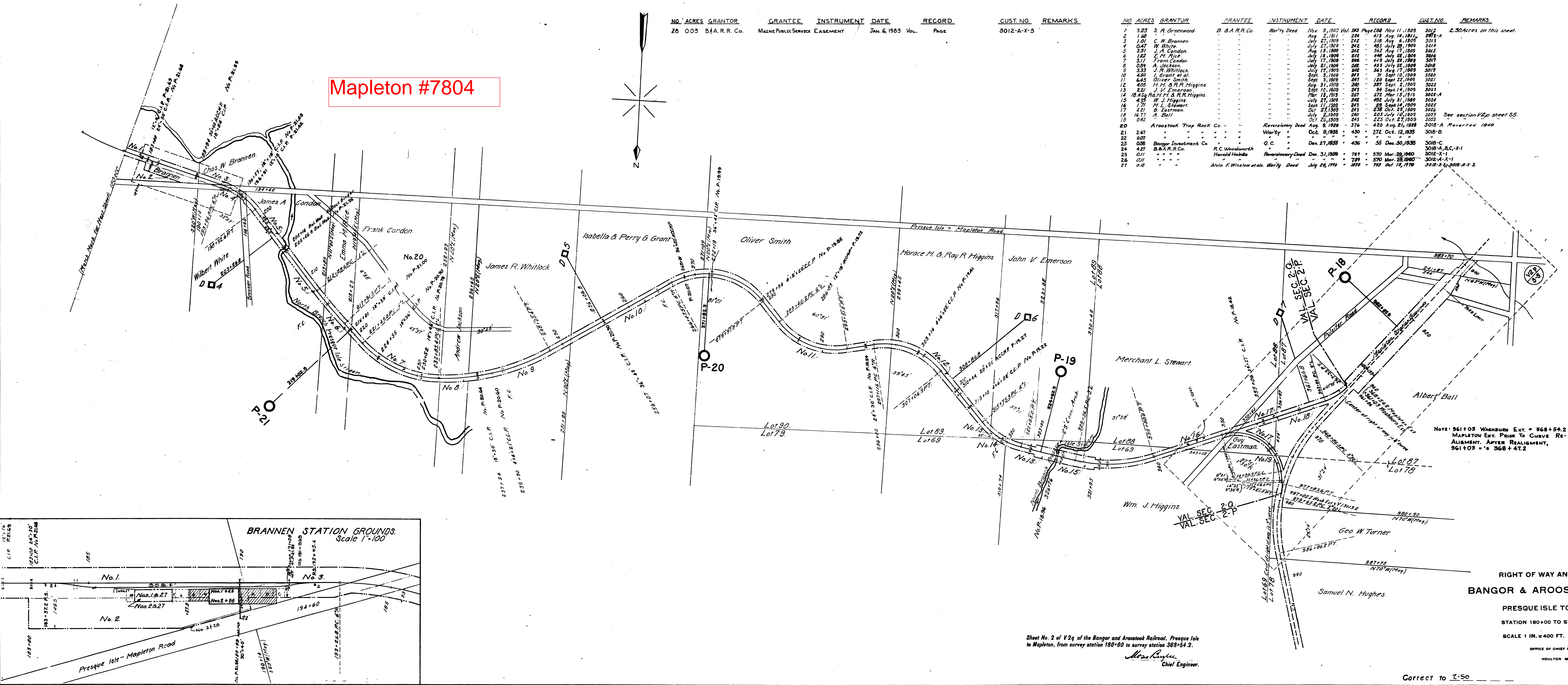
RIGHT OF WAY AND TRACK MAP
 BANGOR & AROOSTOOK R. R. CO.
 SQUAPAN TO STOCKHOLM
 STATION 612+40 TO STATION 823+60
 SCALE 1 IN. = 400 FT. JUNE 30, 1916.
 OFFICE OF CHIEF ENGINEER
 HOULTON, MAINE

Mapleton #7804



NO.	ACRES	GRANTOR	GRANTEE	INSTRUMENT	DATE	RECORD	CUST. NO.	REMARKS
28	0.03	B. & A. R. Co.	MAINE PUBLIC SERVICE EASEMENT		JAN. 6, 1933	Vol. Page	3012-A-X-3	

NO.	ACRES	GRANTOR	GRANTEE	INSTRUMENT	DATE	RECORD	CUST. NO.	REMARKS	
1	3.23	S. P. Greenwood	B. & A. R. Co.	Warranty Deed	Nov. 9, 1903	Vol. 283 Page 288	Nov. 11, 1909	3012	2.30 Acres on this sheet.
2	1.60	Aug. 27, 1911	234	413	Aug. 14, 1911			3012-A	
3	1.01	C. W. Brannen			July 27, 1909	242	318	Aug. 6, 1909	3013
4	0.47	W. White			July 27, 1909	242	405	July 28, 1909	3014
5	3.91	J. A. Condon			Aug. 13, 1909	242	352	Aug. 17, 1909	3015
6	1.22	F. M. Rice			July 12, 1909	242	448	July 22, 1909	3016
7	3.11	Frank Condon			July 17, 1909	246	419	July 22, 1909	3017
8	0.98	A. Jackson			July 21, 1909	242	433	July 22, 1909	3018
9	3.33	J. R. Whitlock			July 17, 1909	242	343	Aug. 17, 1909	3019
10	4.50	I. Grant et al.			Sept. 3, 1909	243	71	Sept. 10, 1909	3020
11	6.45	Oliver Smith			Sept. 3, 1909	243	120	Sept. 22, 1909	3021
12	4.05	H. & T. R. Higgins			Aug. 31, 1909	240	387	Sept. 2, 1909	3022
13	2.21	J. V. Emerson			Sept. 10, 1909	243	34	Sept. 14, 1909	3023
14	18.43g	Ed. H. H. & R. R. Higgins			Mar. 13, 1913	251	272	Mar. 15, 1913	3023-A
15	4.35	W. J. Higgins			July 27, 1909	242	492	July 31, 1909	3024
16	1.71	M. L. Stewart			Sept. 11, 1909	243	89	Sept. 14, 1909	3025
17	2.21	G. Eastman			Oct. 27, 1909	243	238	Oct. 28, 1909	3026
18	16.73	A. Ball			July 21, 1909	240	203	July 10, 1909	3025
19	0.42				Oct. 26, 1909	243	225	Oct. 27, 1909	3025
20		Aroostook Trap Rock Co.		Reversionary Deed	Aug. 9, 1928	376	420	Aug. 21, 1928	3018-A Reverted 1949
21	2.61			Warranty	Oct. 9, 1935	430	272	Oct. 12, 1935	3018-B
22	0.07				"	"	"	"	"
23	0.36	Bangor Investment Co.		Q. C.	Dec. 27, 1935	436	55	Dec. 30, 1935	3018-C
24	4.27	B. & A. R. Co.	R. C. Woodworth		"	"	"	"	3018-A, B, C, X-1
25	0.11		Harold Haines	Reversionary Deed	Dec. 31, 1959	781	570	Mar. 29, 1960	3018-X-1
26	0.11				"	"	"	"	3018-X-1
27	0.12		Alvin F. Winslow et al.	Warranty Deed	July 28, 1970	1070	713	Oct. 15, 1970	3012-A-X-2



NOTE: 961+05 WASHBURN EXT. = 368+54.2
 MAPLETON EXT. PRIOR TO CURVE RE-ALIGNMENT. AFTER REALIGNMENT, 961+03 = 368+47.2

RIGHT OF WAY AND TRACK MAP
 BANGOR & AROOSTOOK R. R. CO.
 PRESQUE ISLE TO MAPLETON
 STATION 180+00 TO STATION 368+54.2
 SCALE 1 IN. = 400 FT. JUNE 30, 1916.

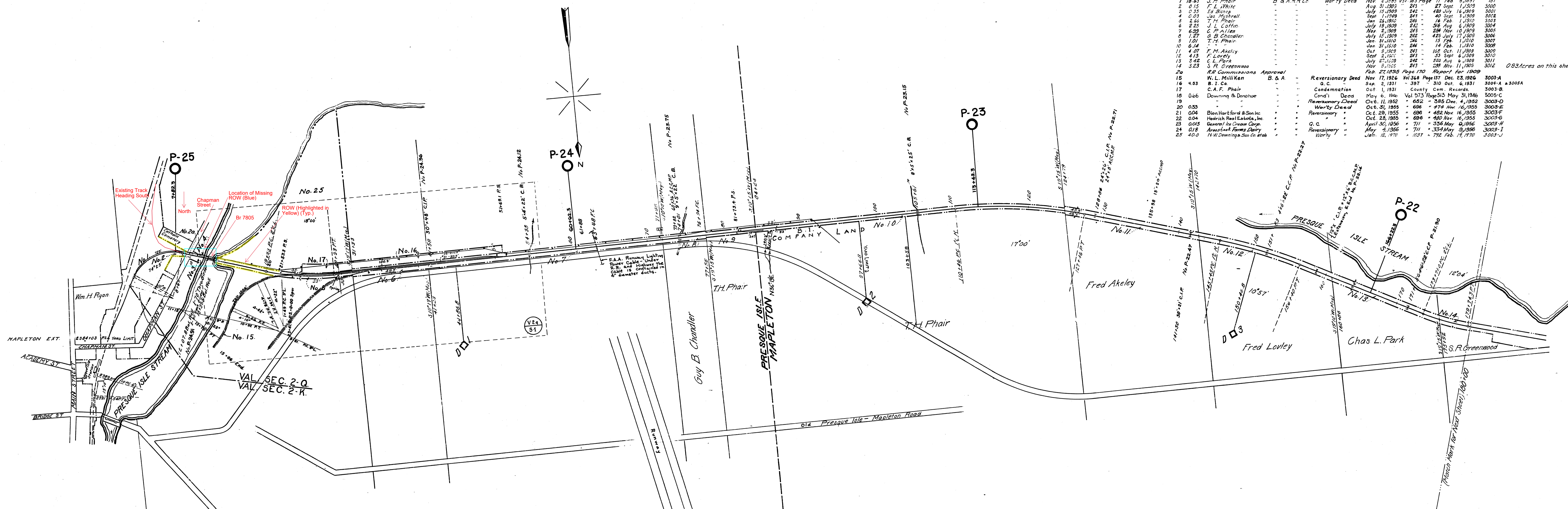
Sheet No. 2 of V 2q of the Bangor and Aroostook Railroad, Presque Isle to Mapleton, from survey station 180+00 to survey station 368+54.2.
 Chief Engineer.

OFFICE OF CHIEF ENGINEER.
 HOULTON MAINE

V2q
 2

Correct to 2-50

BRANNEN 97



NO.	ACRES	GRANTOR	GRANTEE	INSTRUMENT	DATE	RECORD	COST N.	REMARKS
1	18.63	J. H. Phair	B & A.R.R. Co.	Warranty Deed	Nov. 6, 1895	Vol. 43 Page 11	Feb. 9, 1897	787
2	0.15	F. L. White			Aug. 31, 1909	243	27 Sept. 1, 1909	3000
3	0.35	Ed. Bishop			July 15, 1909	242	420 July 16, 1909	3001
4	0.03	Jas. Mitchell			Sept. 1, 1909	241	40 Sept. 3, 1909	3002
5	2.66	T. H. Phair			Jan. 24, 1910	246	16 Feb. 1, 1910	3003
6	2.25	J. D. Coffin			July 19, 1909	242	316 Aug. 6, 1909	3004
7	6.59	G. L. Allen			Nov. 2, 1909	245	286 Nov. 10, 1909	3005
8	1.27	G. B. Chandler			July 15, 1909	242	425 July 17, 1909	3006
9	1.01	T. H. Phair			Jan. 31, 1910	246	15 Feb. 1, 1910	3007
10	6.14				Jan. 31, 1910	246	14 Feb. 1, 1910	3008
11	4.07	F. M. Akeley			Oct. 9, 1909	243	168 Oct. 11, 1909	3009
12	4.13	F. Lowley			Sept. 2, 1905	243	53 Sept. 6, 1909	3010
13	3.12	C. L. Park			July 27, 1909	245	230 Aug. 6, 1909	3011
14	3.23	S. R. Greenwood			Nov. 9, 1905	243	238 Nov. 11, 1909	3012
15		W. L. Milliken	B. & A.	Reversionary Deed	Nov. 17, 1926	Vol. 368 Page 131	Dec. 23, 1926	3003-A
16	4.93	B. I. Co.		Condemnation	Sep. 2, 1931	387	310 Oct. 6, 1931	3003-A & 3003-A
17		C. A. F. Phair		Condemnation	Oct. 1, 1931	County Com. Records		3003-B
18	0.66	Downing & Denahue		Condem. Deed	May 6, 1946	Vol. 573 Page 515	May 31, 1946	3003-C
19				Reversionary Deed	Oct. 11, 1952	652	385 Dec. 4, 1952	3003-D
20	0.35			Warranty Deed	Oct. 31, 1955	696	474 Nov. 16, 1955	3003-E
21	0.04	Bien Hartford & Son Inc.		Reversionary	Oct. 28, 1955	696	482 Nov. 16, 1955	3003-F
22	0.04	Hedrich Real Estate, Inc.		Reversionary	Oct. 28, 1955	696	480 Nov. 16, 1955	3003-G
23	0.03	General Ice Cream Corp.		Q.C.	April 30, 1956	711	336 May 9, 1956	3003-H
24	0.18	Aroostook Farms Dairy		Reversionary	May 4, 1956	711	334 May 9, 1956	3003-I
25	40.0	N. W. Downings & Co. et al.		Warranty	Jan. 16, 1972	1057	776 Feb. 19, 1972	3003-J

State of Maine,
County of Piscataquis

I, the undersigned, officer of the Bangor and Aroostook Railroad Company, do hereby certify that this is a correct map, in a series of two sheets, of said railroad

State of Maine, prepared from the records of said company.

Correct: *Walter R. Rice*
Chief Engineer.

Subscribed and sworn to before me, this 15th day of December, 1916.

Franklin A. Fields
Notary Public in and for the County of Piscataquis, State of Maine.

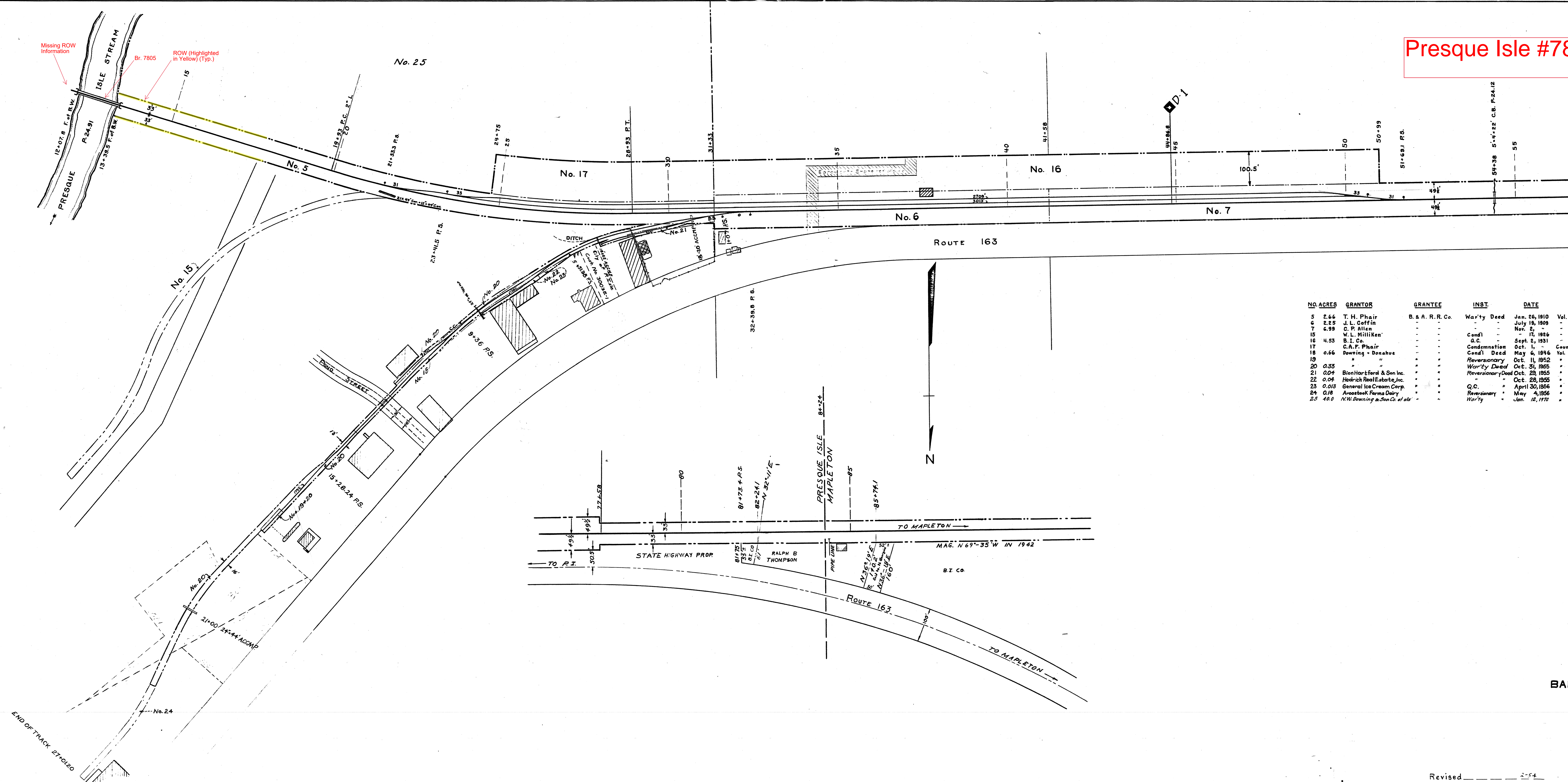
My commission expires November 4, 1920.

RIGHT OF WAY AND TRACK MAP
BANGOR & AROOSTOOK R. R. CO.
PRESQUE ISLE TO MAPLETON
STATION 2384+03 TO STATION 180+00
SCALE 1 IN. = 400 FT. JUNE 30, 1916.

OFFICE OF CHIEF ENGINEER.
HOULTON MAINE

V29
1

Presque Isle #7805



NO. ACRES	GRANTOR	GRANTEE	INST.	DATE	RECORD	CUST. NO.	REMARKS
5	2.66 T. H. Phair	B. & A. R. R. Co.	Warranty Deed	Jan. 26, 1910	Vol. 246 Page 16	Feb. 1, 1910 3003	
6	2.25 J. L. Coffin	-	-	July 18, 1909	- 242 -	516 Aug. 6, 1909 3004	
7	6.99 C. P. Allen	-	-	Nov. 5, -	- 243 -	284 Nov. 10, - 3005	
15	W. L. Milliken	-	Condl.	- 15, 1924	- 368 -	137 Dec. 23, 1924 3003A	
16	4.53 B. I. Co.	-	Q.C.	Sept. 5, 1931	- 387 -	310 Oct. 6, 1931 3004A - 3005A	Reserves cattle pass.
17	C. A. F. Phair	-	Condemnation	Oct. 1, -	-	County Com. Records 3003 B	
18	0.66 Downing - Donahue	-	Condl. Deed	May 6, 1896	Vol. 573 Page 313	May 31, 1896 3003 C	
19	"	-	Reversionary	Oct. 11, 1952	" 652 "	385 Dec. 4, 1952 3003 D	
20	0.35 "	-	Warranty Deed	Oct. 31, 1925	" 696 "	474 Nov. 16, 1925 3003 E	
21	0.04 BenHartford & Son Inc.	-	Reversionary Deed	Oct. 28, 1955	" 696 "	482 Nov. 16, 1955 3003 F	
22	0.04 Hedrich Real Estate, Inc.	-	"	Oct. 28, 1955	" 696 "	480 Nov. 16, 1955 3003 G	
23	0.018 General Ice Cream Corp.	-	Q.C.	April 30, 1956	" 711 "	336 Nov. 8, 1956 3003 H	
24	0.18 Aroostook Farms Dairy	-	Reversionary	May 4, 1956	" 711 "	354 May 8, 1956 3003 I	
25	46.6 N.W. Downing & Son Co. of etc.	-	Warranty	Jan. 12, 1910	" 1957 "	772 Feb. 19, 1910 3003 J	

STATION MAP
 BANGOR & AROOSTOOK R. R. CO.
 PRESQUE ISLE TO MAPLETON
 STATION 12+50 TO STATION 56+00
 SCALE 1 IN. = 100 FT. AUG. 21, 1946.

OFFICE OF CHIEF ENGINEER
 HOULTON, MAINE

Revised _____ 2-54

V 2 q
 S 1

SUR "O" PRESQUE ISLE 96