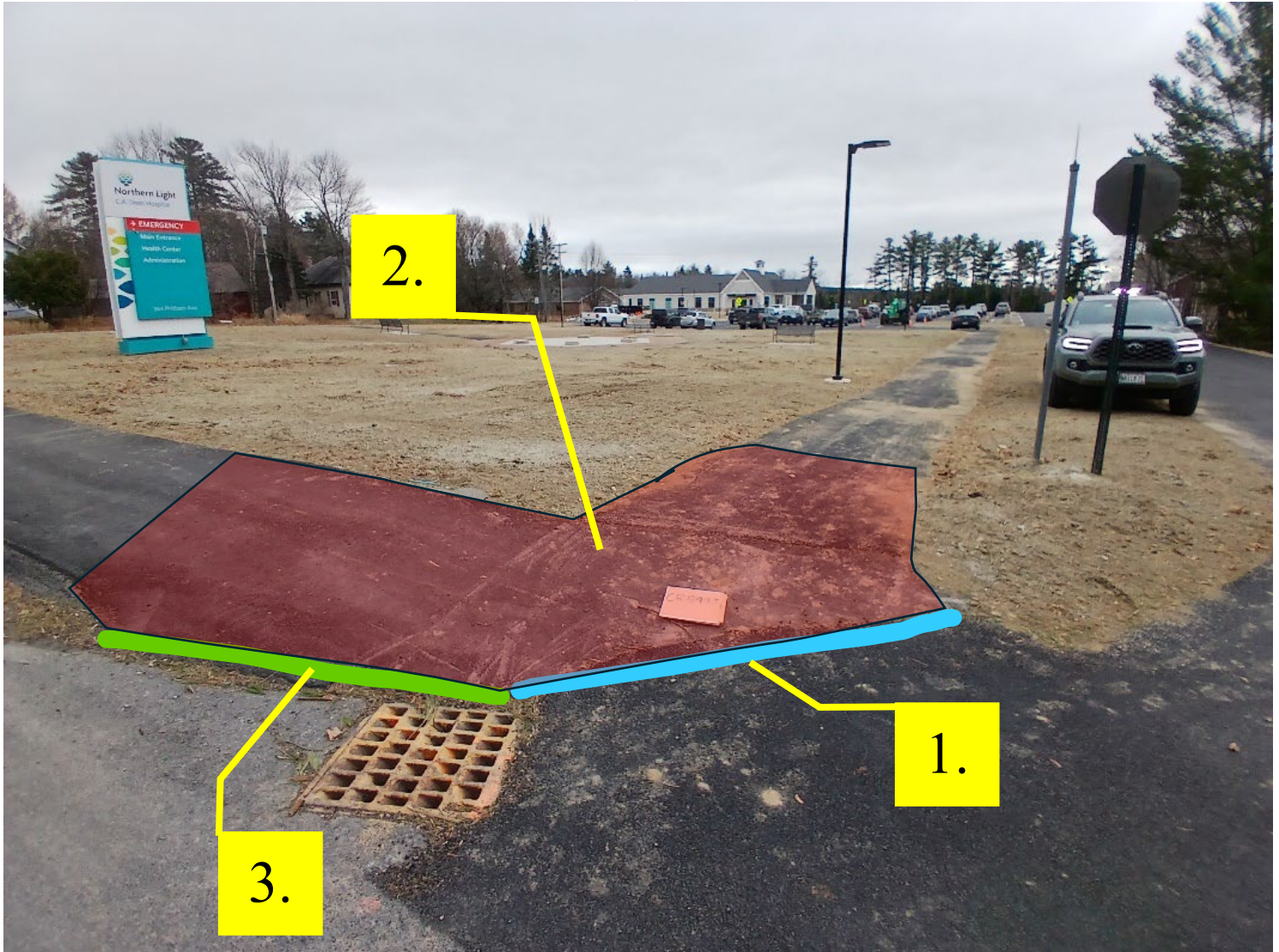


Pedestrian Ramp UTILITIES Report

Drawings Not to Scale

CR14870

45.459932°, -69.61151°



1. Add detectable warning field (6' x 2' = 12 sf)
2. Regrade Sidewalk ((16' x 6') + (7.42' x 3')) (13.14 SY)
3. Add bituminous curb terminal (8' LT)
4. Add pedestrian crossing signs (2 x W11-2 LT/RT & 2 x W16-7P LT/RT)

Aerial: CMP, CCI, Premium Choice Broadband

Buried: Moosehead Sanitary, Maine Water Co., CCI

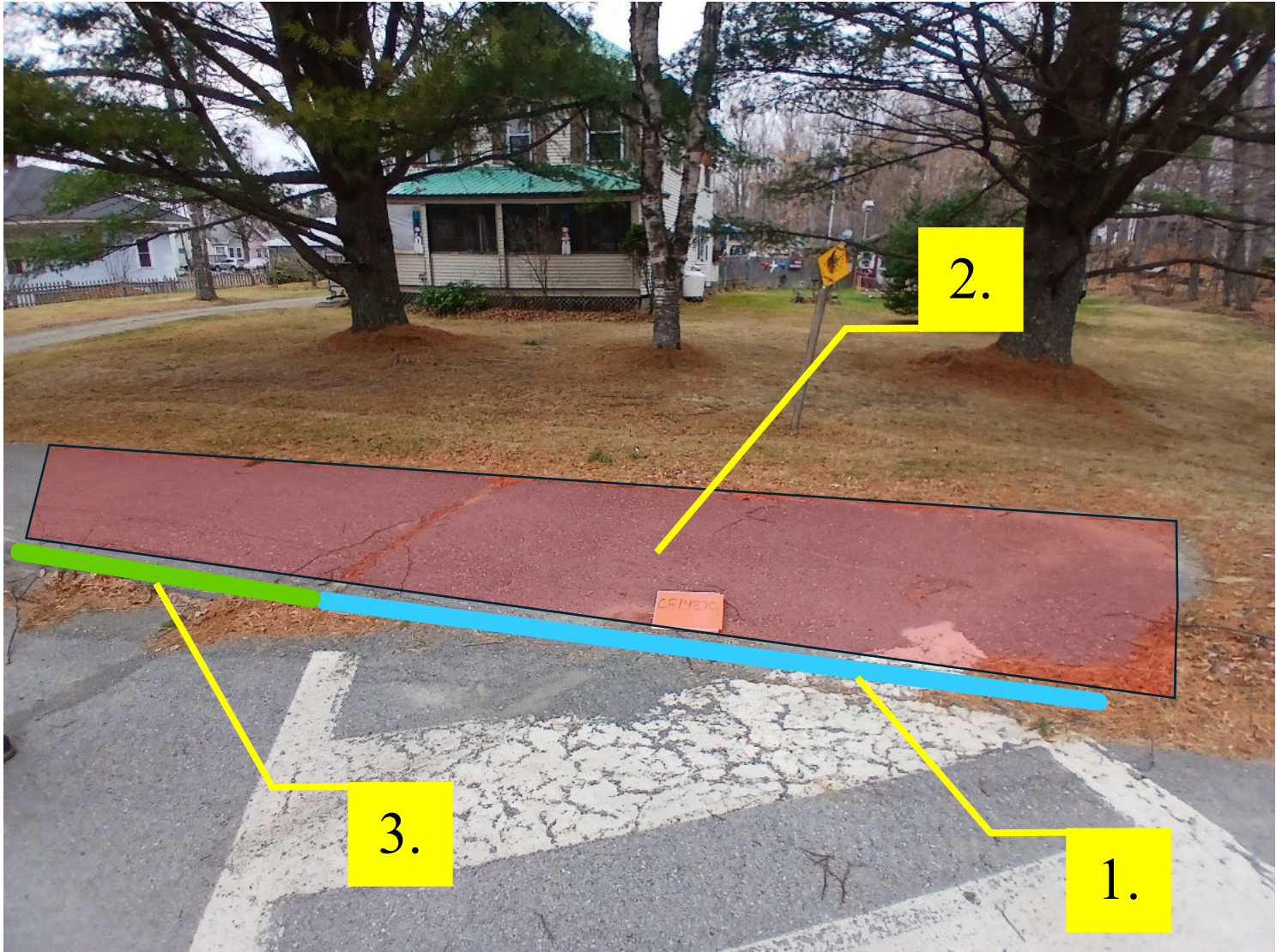
NO Utility adjustments necessary.

Pedestrian Ramp UTILITIES Report

Drawings Not to Scale

CR13995

45.460075°, -69.611547°



1. Add detectable warning field (6' x 2' = 12 sf)
2. Regrade Sidewalk (15' x 5') (8.33 SY)
3. Add bituminous curb terminal (9' LT)
4. Add pedestrian crossing signs (2 x W11-2 LT/RT & 2 x W16-7P LT/RT)

Aerial: CMP, CCI, Premium Choice Broadband

Buried: Moosehead Sanitary, Maine Water Co., CCI

NOTE: Sewer manhole in crosswalk/shoulder / NO impacts. / Will be adjusted for **029424.00**

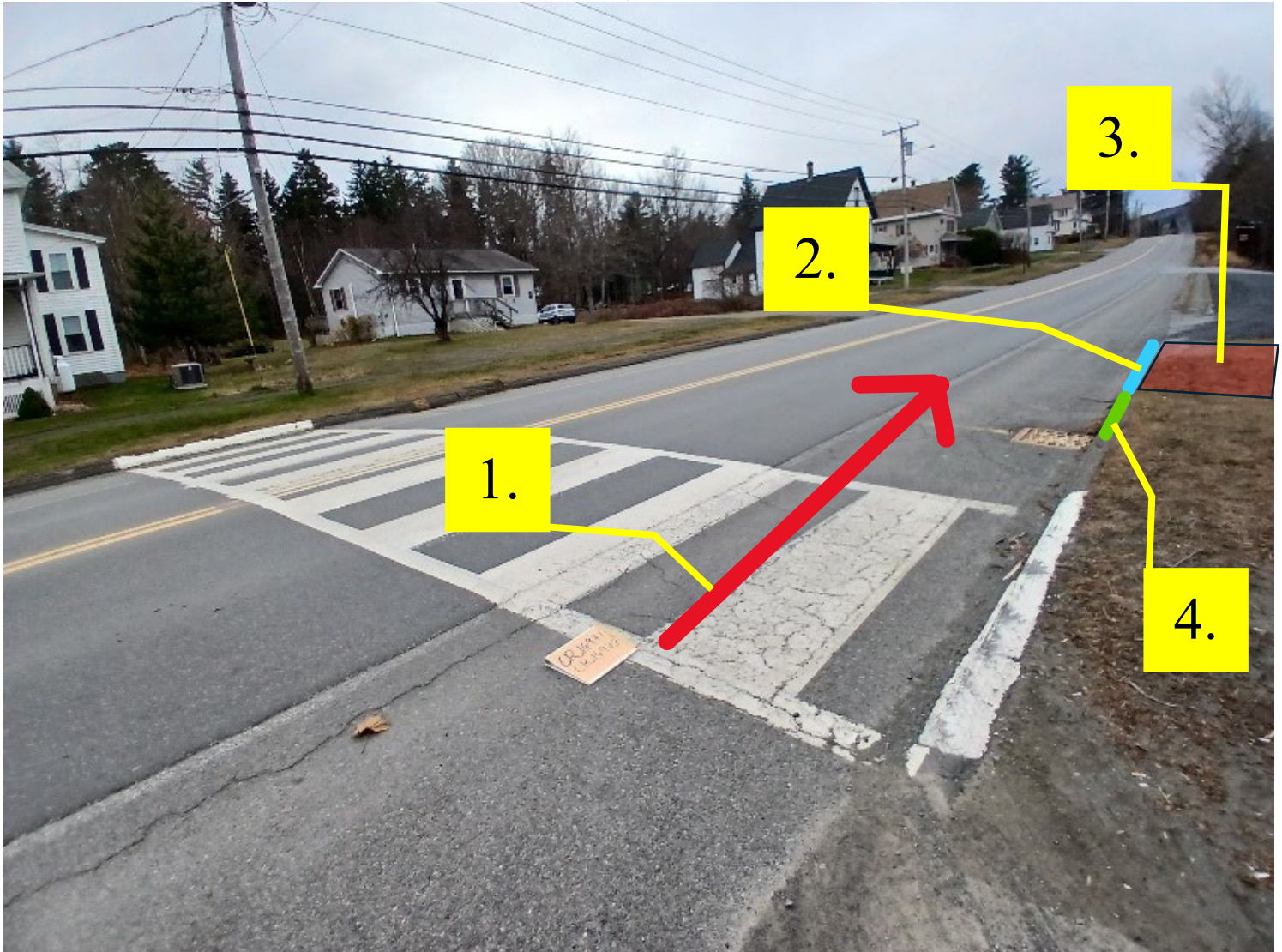
NO Utility adjustments necessary.

Pedestrian Ramp UTILITIES Report

Drawings Not to Scale

CR14971

45.459617°, -69.605831°



1. Shift crosswalk to other side of basin, between curb and pull off
2. Add detectable warning field (6' x 2' = 12 sf)
3. Construct Sidewalk (6' x 5') (3.33 SY)
4. Add bituminous curb terminal (8' RT)
5. Add pedestrian crossing signs (2 x W11-2 LT/RT & 2 x W16-7P LT/RT)

Aerial: CMP, CCI, Premium Choice Broadband

Buried: Moosehead Sanitary, Maine Water Co., CCI

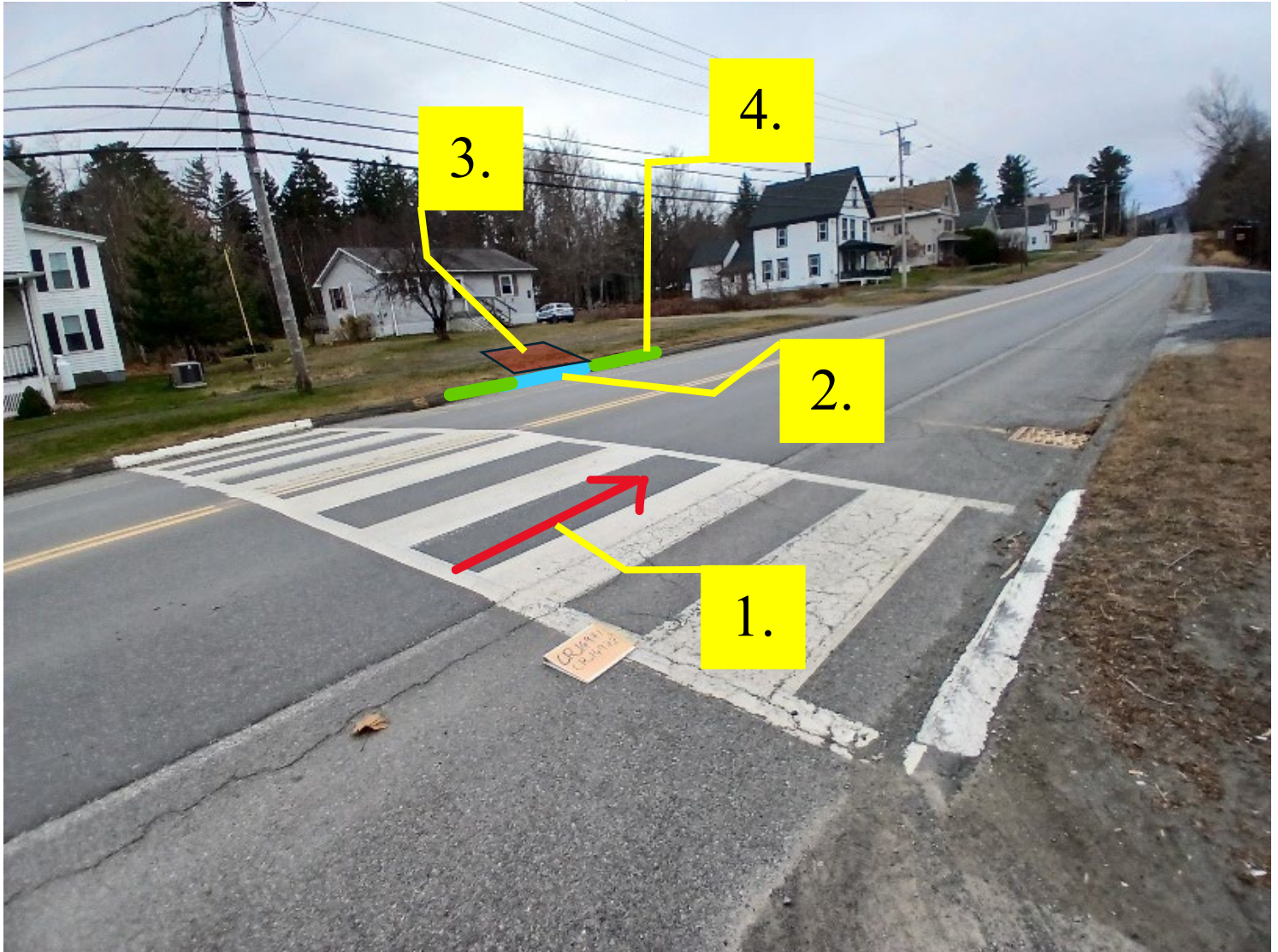
NO Utility Adjustments necessary

Pedestrian Ramp UTILITIES Report

Drawings Not to Scale

CR14972

45.459617°, -69.605831°



1. Shift crosswalk to other side of basin
2. Add detectable warning field (6' x 2' = 12 sf)
3. Construct sidewalk through esplanade (6' x 21') (14 SY)
4. Add bituminous curb terminals (8' LT & 8' RT)
5. Add pedestrian crossing signs (2 x W11-2 LT/RT & 2 x W16-7P LT/RT)

Aerial: CMP, CCI, Premium Choice Broadband

Buried: Moosehead Sanitary, Maine Water Co., CCI

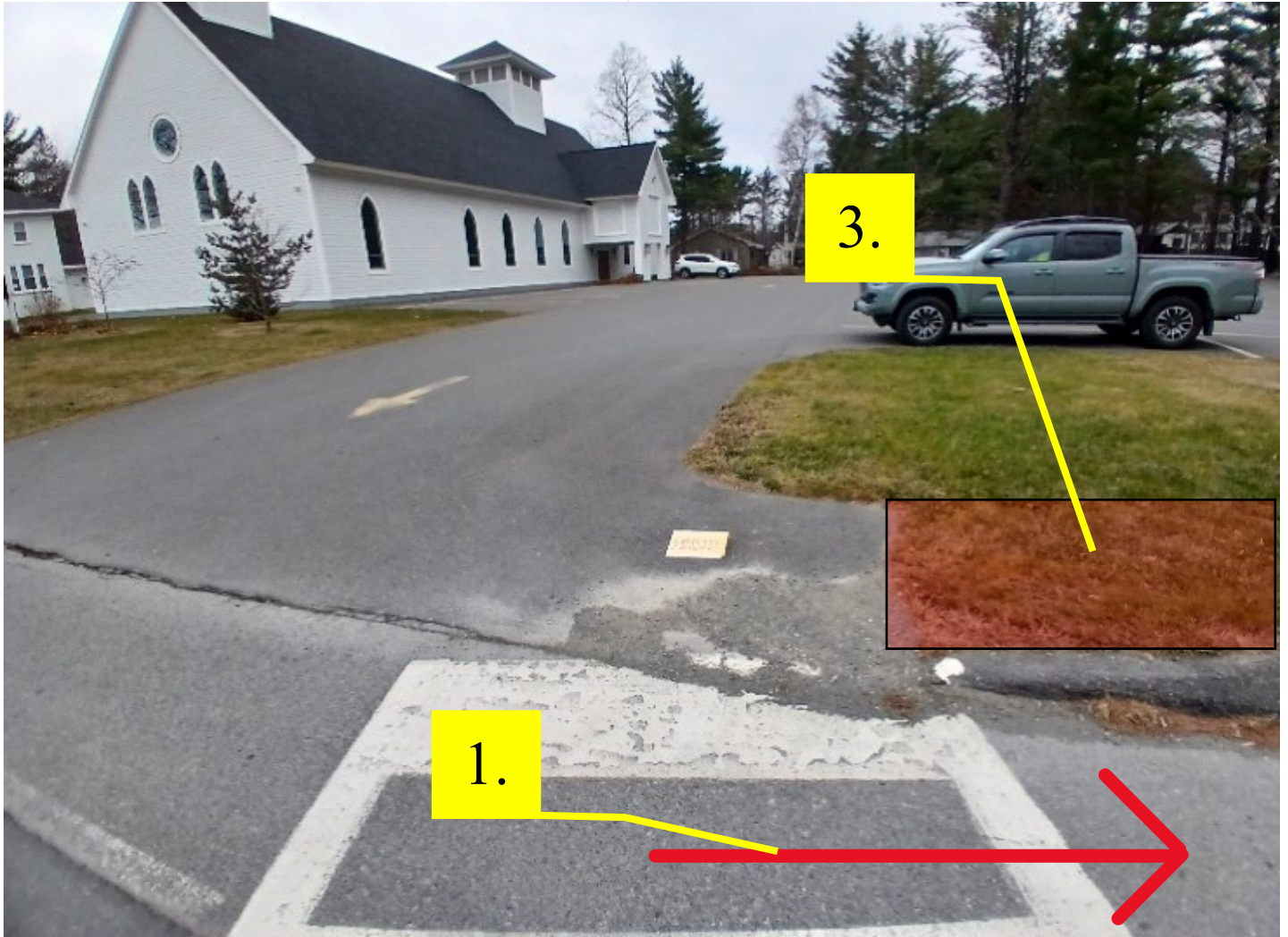
NO Utility adjustments necessary.

Pedestrian Ramp UTILITIES Report

Drawings Not to Scale

CR14974

45.459161°, -69.598553°



1. Shift crosswalk right (straight across road between pole and school entrance (~20'))
2. Add detectable warning field (6' x 2' = 12 sf)
3. Construct sidewalk (20' x 5') (11.11 SY)
4. Add bituminous curb terminals (11' LT & 6' RT)
5. Add pedestrian crossing signs (2 x S1-1 LT/RT & 2 x W16-7P LT/RT)

Aerial: CMP, CCI, Premium Choice Broadband

Buried: Moosehead Sanitary, Maine Water Co., CCI

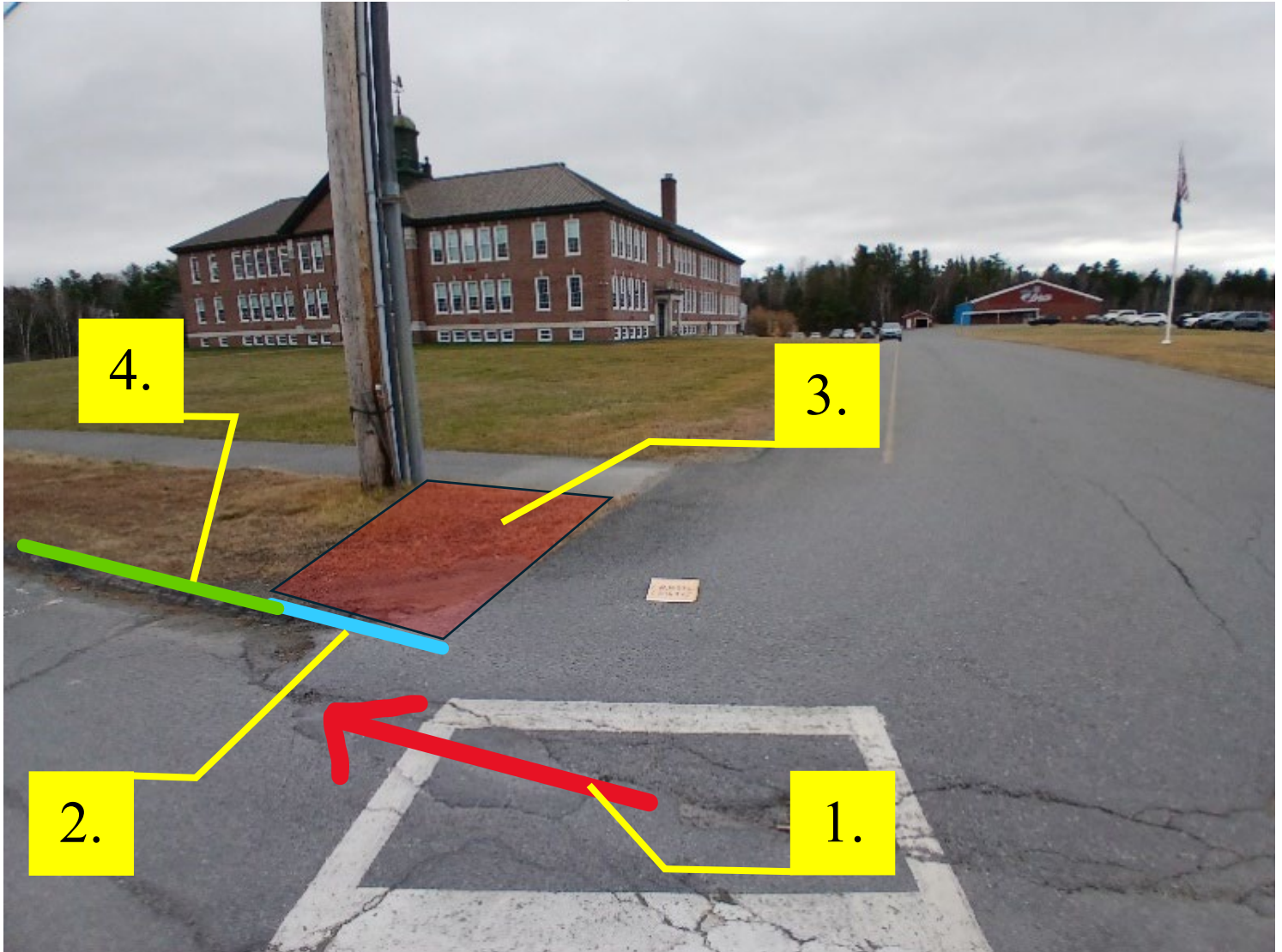
NO Utility adjustments necessary.

Pedestrian Ramp UTILITIES Report

Drawings Not to Scale

CR14975

45.459039°, -69.598516°



1. Shift crosswalk left (in line with ramp across road)
2. Add detectable warning field (6' x 2' = 12 sf)
3. Construct Sidewalk (6' x 15') (10 SY)
4. Add bituminous curb terminal (8' LT)
5. Add pedestrian crossing signs (2 x S1-1 LT/RT & 2 x W16-7P LT/RT)

Aerial: CMP, CCI, Premium Choice Broadband

Buried: Moosehead Sanitary, Maine Water Co., CCI

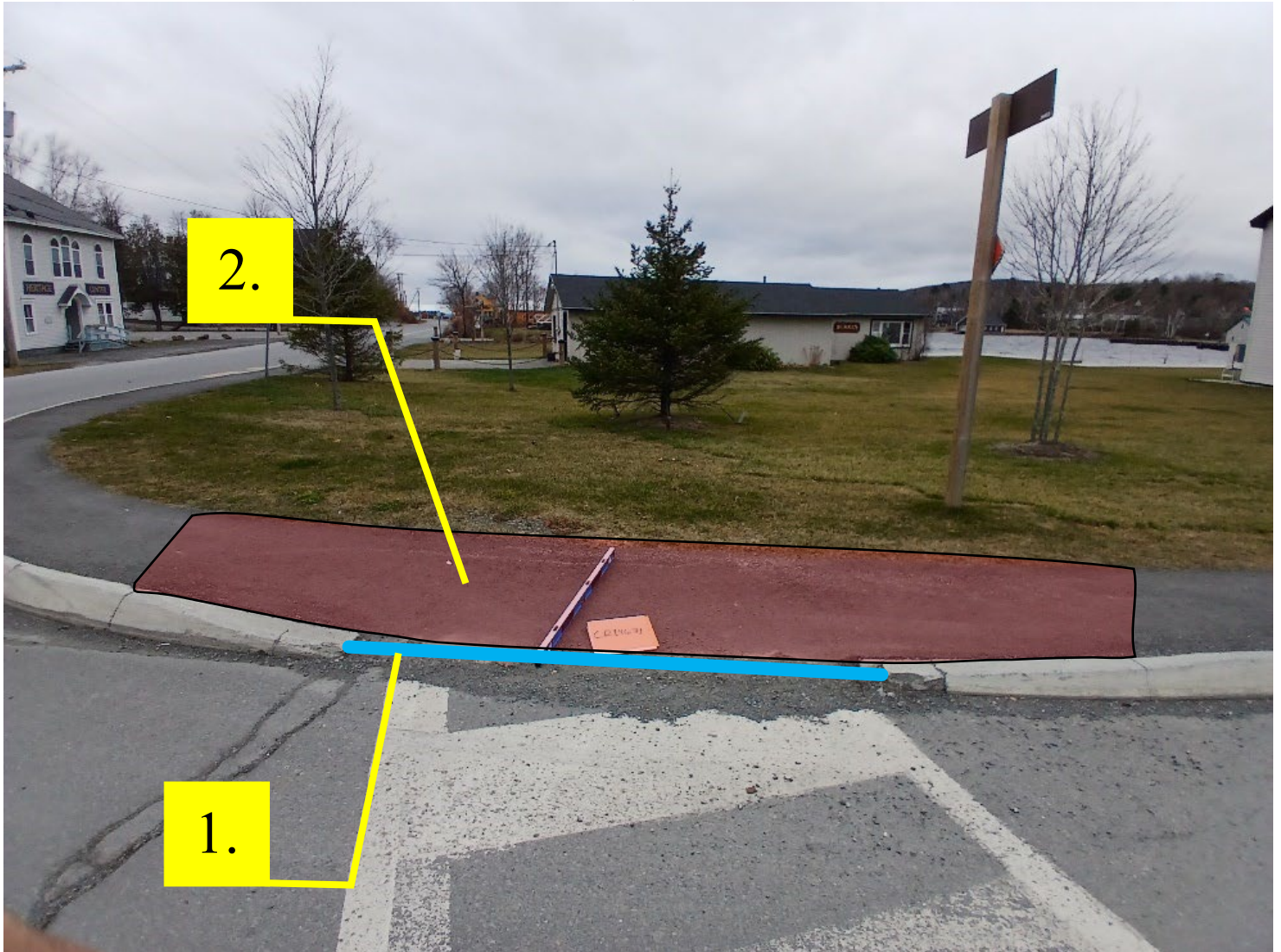
NO Utility adjustments necessary.

Pedestrian Ramp UTILITIES Report

Drawings Not to Scale

CR14671

45.458833°, -69.593974°



1. Add detectable warning field (7' x 2' = 14 sf)
 2. Regrade Sidewalk (15' x 4') (6.67 SY)
 3. Add pedestrian crossing signs (2 x W11-2 LT/RT & 2 x W16-7P LT/RT)
- *NOTE*: Do not disturb existing curb

Aerial: CMP, CCI, Premium Choice Broadband

Buried: Moosehead Sanitary, Maine Water Co., CCI

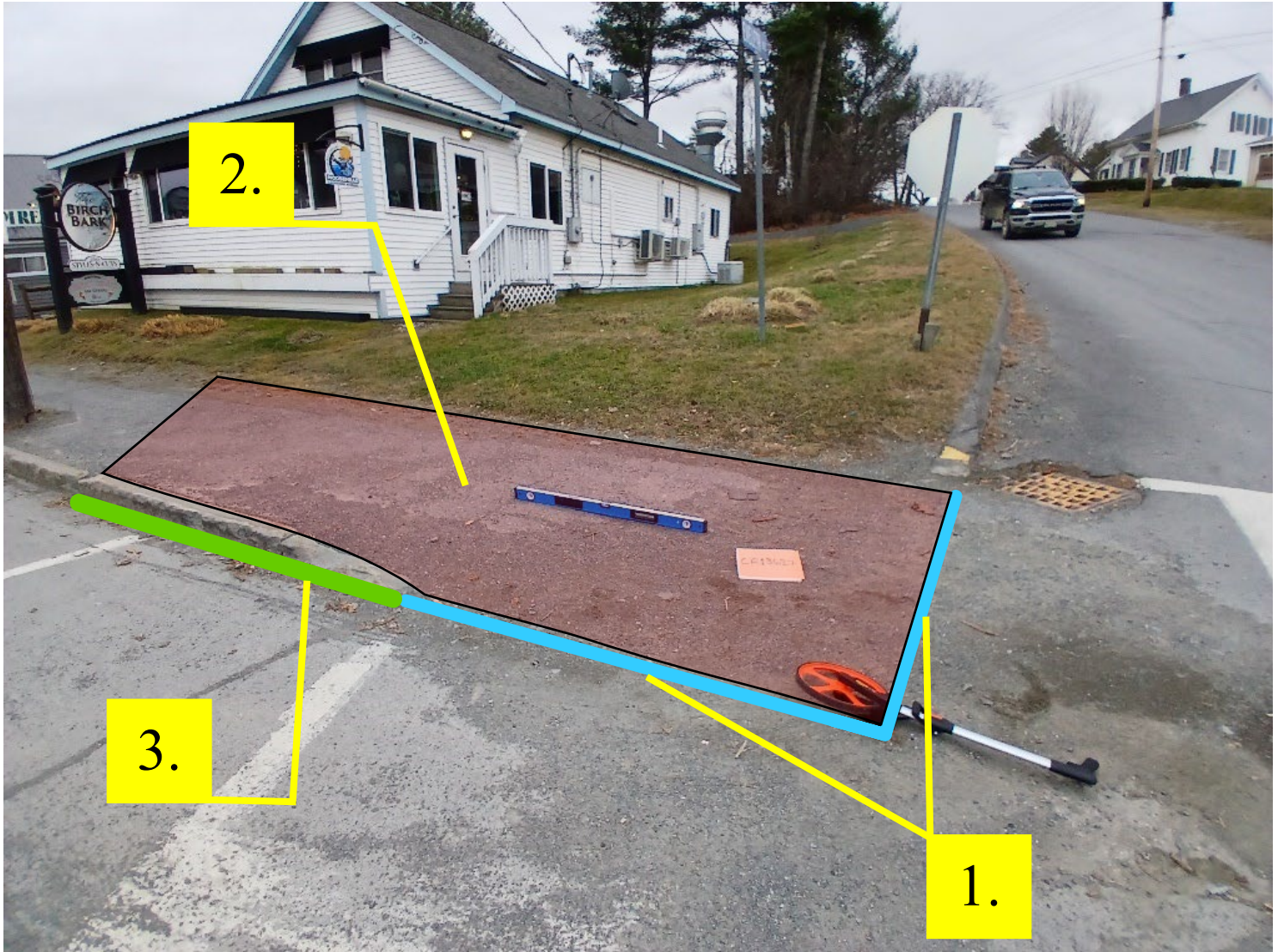
NO Utility adjustments necessary.

Pedestrian Ramp UTILITIES Report

Drawings Not to Scale

CR13627

45.458841°, -69.594049°



1. Add detectable warning field (6' x 2' + 6 x 2' = 24 sf)
2. Regrade landing (15' x 5') (8.33 SY)
3. Add granite curb terminal or remove and reset (8' LT)
4. Add pedestrian crossing signs (2 x W11-2 LT/RT & 2 x W16-7P LT/RT)

Aerial: CMP, CCI, Premium Choice Broadband

Buried: Moosehead Sanitary, Maine Water Co., CCI

NO Utility adjustments necessary.

Pedestrian Ramp UTILITIES Report

Drawings Not to Scale

DAIRY BAR

45.458919°, -69.592205°



1. Add detectable warning field (8' x 2' = 16 sf)
2. Regrade sidewalk (10' LT + 8' Center + 6' RT x 10') (26.67 SY)
3. Add granite curb terminal (10' LT)
4. Replace catch basin grate with pedestrian approved grate
5. Add pedestrian crossing signs (2 x W11-2 LT/RT & 2 x W16-7P LT/RT)

Aerial: CMP, CCI, Premium Choice Broadband

Buried: Moosehead Sanitary, Maine Water Co., CCI

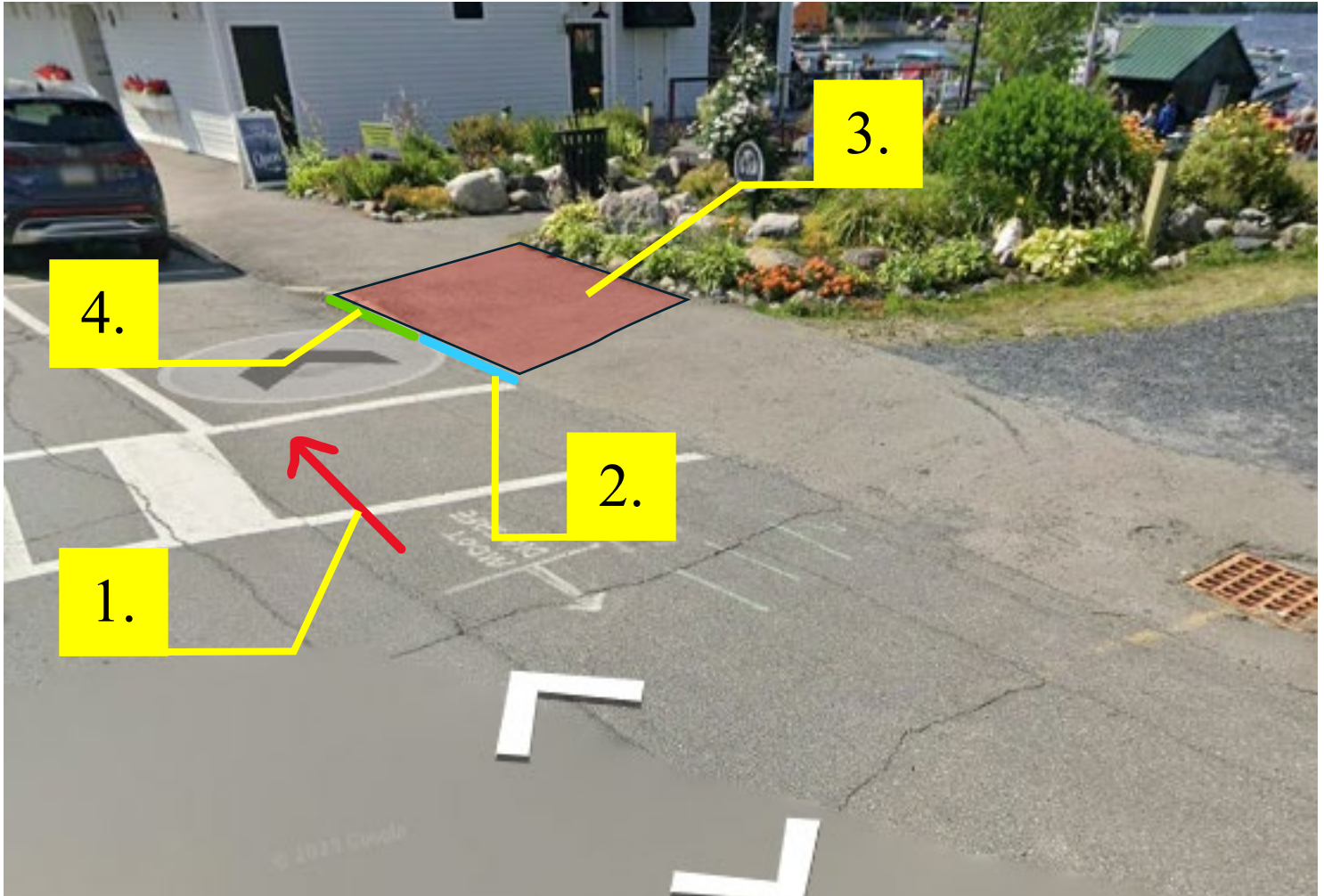
NO Utility adjustments necessary.

Pedestrian Ramp UTILITIES Report

Drawings Not to Scale

PARK

45.458919°, -69.592205°



1. Shift crosswalk left (in line with ramp across road)
2. Add detectable warning field (6' x 2' = 12 sf)
3. Regrade sidewalk (12' x 10') (13.33 SY)
4. Add granite curb terminal (6' LT)
5. Add pedestrian crossing signs (2 x W11-2 LT/RT & 2 x W16-7P LT/RT)

Aerial: CMP, CCI, Premium Choice Broadband

Buried: Moosehead Sanitary, Maine Water Co., CCI

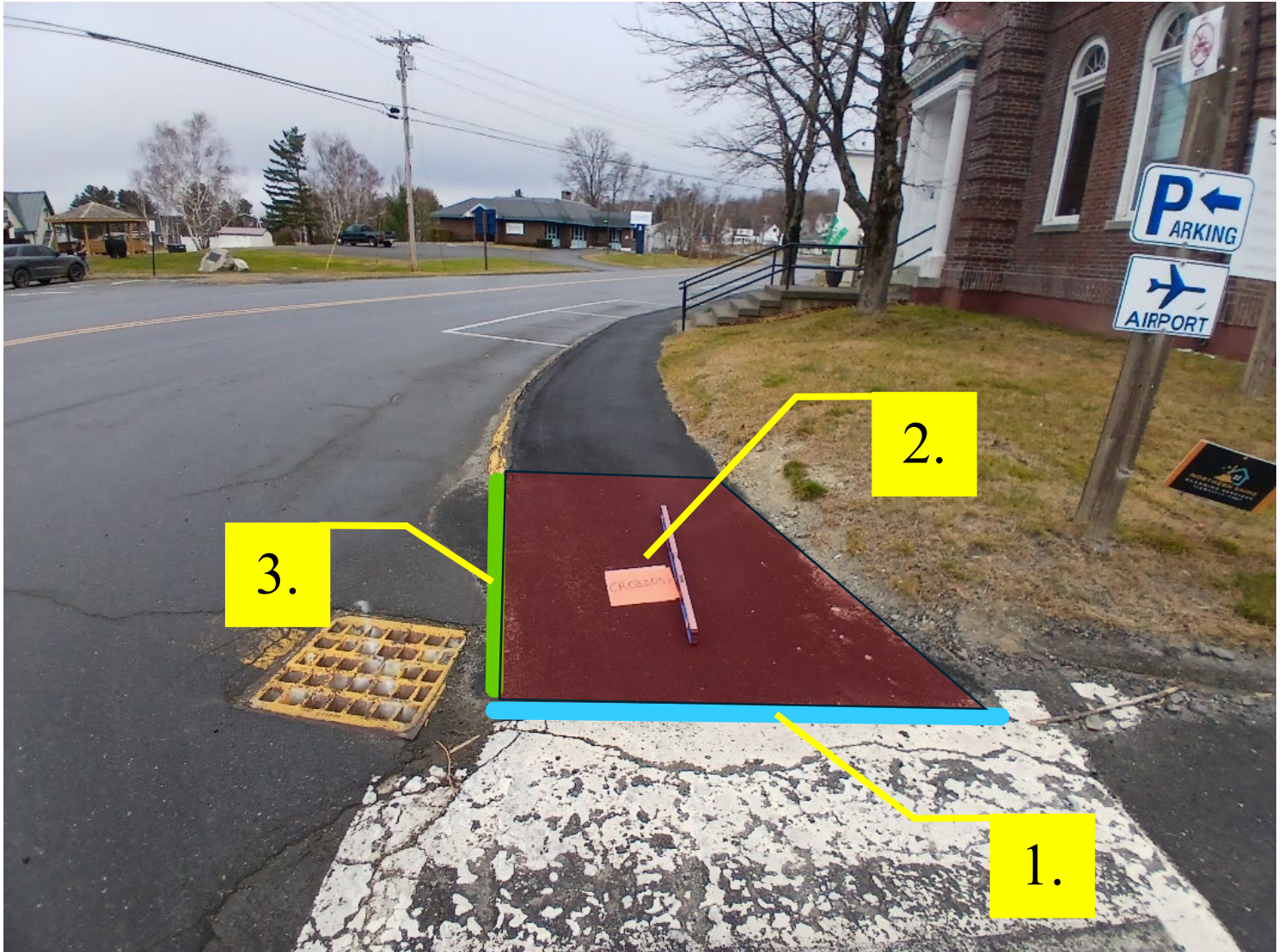
NO Utility adjustments necessary.

Pedestrian Ramp UTILITIES Report

Drawings Not to Scale

CR03205

45.459547°, -69.591231°



1. Add detectable warning field (6' x 2' = 12 sf)
2. Regrade landing (8' x 5') (4.44 SY)
3. Add bituminous curb terminal (8' LT)
4. Add pedestrian crossing signs (2 x W11-2 LT/RT & 2 x W16-7P LT/RT)

Aerial: CMP, CCI, Premium Choice Broadband

Buried: Moosehead Sanitary, Maine Water Co., CCI

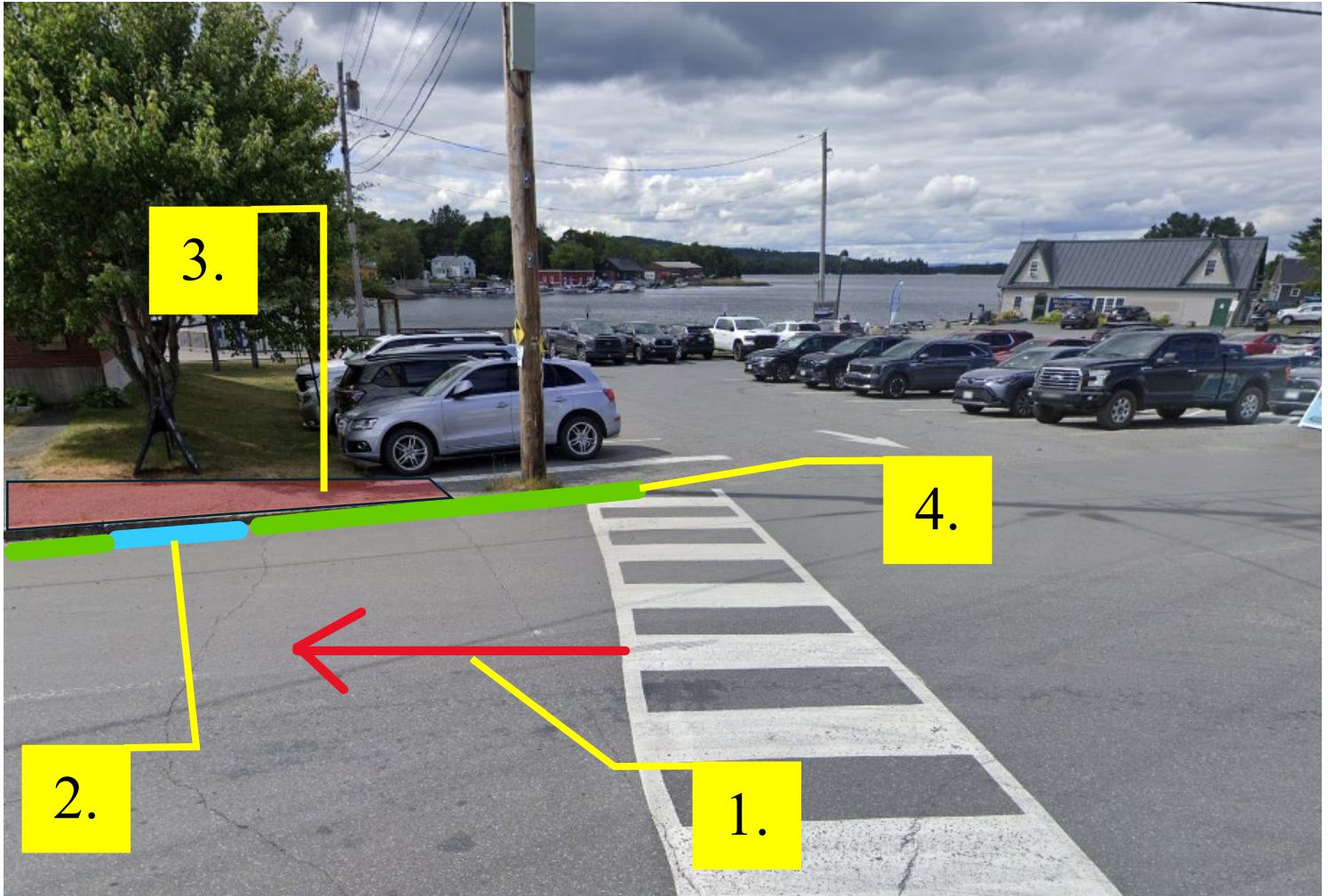
NO Utility adjustments necessary.

Pedestrian Ramp UTILITIES Report

Drawings Not to Scale

CR03207

45.459469°, -69.591572°



1. Shift crosswalk left (in line with ramp across road)
2. Add detectable warning field (6' x 2' = 12 sf)
3. Regrade Sidewalk (23' x 5') (12.78 SY)
4. Add granite curb terminals or reset curb removed from another location (8' LT & 15' RT)
*Place 2 terminals on RT sloping toward both the entrance and the constructed ramp
*Terminal on RT will extend approximately 4' beyond pole
5. Add pedestrian crossing signs (2 x W11-2 LT/RT & 2 x W16-7P LT/RT)

Aerial: CMP, CCI, Premium Choice Broadband

Buried: Moosehead Sanitary, Maine Water Co., CCI

NO Utility adjustments necessary.