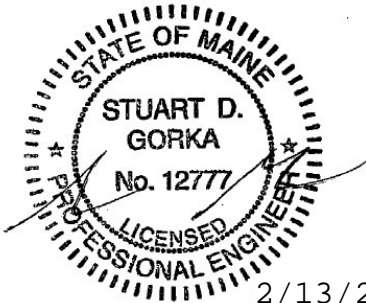

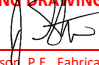


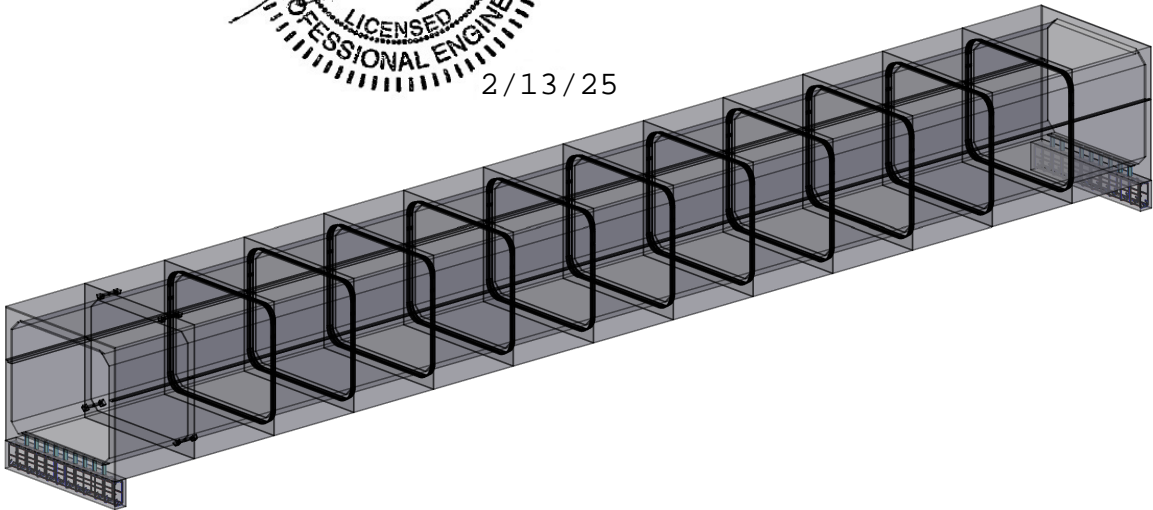
END VIEW
SCALE: 3/8" = 1'-0"

SECTION A-A

CONCRETE ENGINEERING SOLUTIONS, LLC
101 PINE VIEW ESTATES
MOUNTAIN TOP, PA 18707
PHONE: 570-868-2081
FAX: 570-868-2082
concreteengsolutions.com



**MaineDOT**
REVIEWED
Mar 24, 2025
**THIS DOCUMENT HAS BEEN REVIEWED IN ACCORDANCE
WITH STATE OF MAINE STANDARD SPECIFICATIONS
SECTION 105.7 – WORKING DRAWINGS**
Reviewed By: 
Jason Stetsky, P.E., Fabrication Engineer



CONCEPTUAL VIEW
NTS



Superior Concrete, LLC
982 MINOT AVE. AUBURN, ME. 04210
TEL: 207-784-1388
FAX: 207-783-4039
WWW.AMERICANCONCRETE.COM

ITEM	QTY	BILL OF MATERIALS
A	(1)	7'-2 1/4" UPSTREAM END TOP W/ FLAT JOINT
		Wt: (15,040 #)
B	(1)	7'-2 1/4" UPSTREAM END BOT. W/ FLAT JOINT (17,740 #)
C	(1)	7'-2 1/4" MID SECTION TOP W/ FLAT JOINT (15,440 #)
D	(1)	7'-2 1/4" MID SECTION BOT. W/ FLAT JOINT (18,170 #)
E	(10)	7'-2 1/4" MID SECTIONS TOP (15,090 # EA.)
F	(10)	7'-2 1/4" MID SECTION BOT. (17,745 # EA.)
G	(1)	7'-2 1/4" DOWNSTREAM END TOP (14,695 #)
H	(1)	7'-2 1/4" DOWNSTREAM END BOT. (17,320 #)
I	(2)	1' x 2' x 11'-4" TOEWALL Wt: (3,405 #)EA.
J	(18)	MP-316 GROUT CONNECTION TUBE (9 PER TOEWALL)
K	(18)	#8 x 30" TOEWALL PIN (9 EA. END)

- DESIGN NOTES:
- Concrete
 - 1.1. COMP. STRENGTH MIN. 5,000PSI @ 28 DAYS
 - 1.2. AIR-ENTRAINMENT CONTENT OF: 5% - 8%
 - Structural Reinforcement:
 - 2.1. BAR PER ASTM A615, GRADE 60
 - 2.2. WWF PER ASTM A1064, GRADE 75
 - 2.3. INTEGRATE REBAR WITH LIFTING INSERT(S)
 - 2.4. INTERRUPTED BAR AREAS WILL BE REPLACED EACH SIDE WITH HALF THE AFFECTED AREA
 - 2.5. DESIGNED FOR 125% HL-93 WHEEL LOAD RATING
 - 2.6. 2" CLR EXTERIOR, 1 1/2" CLR INTERIOR
 - Manufacturing / Installation:
 - 3.1. JOINTS SEALED WITH BUTYL RUBBER SEALANT
 - 3.2. *93'-11 1/4" PROJECTED LENGTH WHEN FACTORING 1/2" MAX. GROWTH PER JOINT
 - Soil / Fill Requirements:
 - 4.1. 4' ± 6.5' EARTH COVER (FINAL CONDITION)
 - 4.2. 18" MIN. COVER FOR CONSTRUCTION (HL-93) LOADING

Note: Some details not shown for clarity
SCALE: 1/4" = 1'-0" Unless otherwise noted

STRUCTURE NAME: 6'-0" x 10'-0" x 94' CLAMSHELL BOX CULVERT		
JOB NAME: DIXFIELD ROUTE 142		
LOCATION: DIXFIELD, ME.		
CONTRACTOR: MDOT		
DRAWN BY: JWP	DATE: 11/26/2024	PROJECT MGR: J.B.
REV.#: 0.02	DATE: 02/11/2025	SHEET: 1 OF 4



Superior Concrete, LLC
982 MINOT AVE. AUBURN, ME. 04210
TEL: 207-784-1388
FAX: 207-783-4039
WWW.AMERICANCONCRETE.COM

ITEM	QTY	BILL OF MATERIALS
	(26)	B2 TOP
	(26)	B2 BOT.
	(52)	BI
	(13)	AI00
	(13)	A200



MaineDOT

REVIEWED

Mar 24, 2025

THIS DOCUMENT HAS BEEN REVIEWED IN ACCORDANCE
WITH STATE OF MAINE STANDARD SPECIFICATIONS
SECTION 105.7 – WORKING DRAWINGS

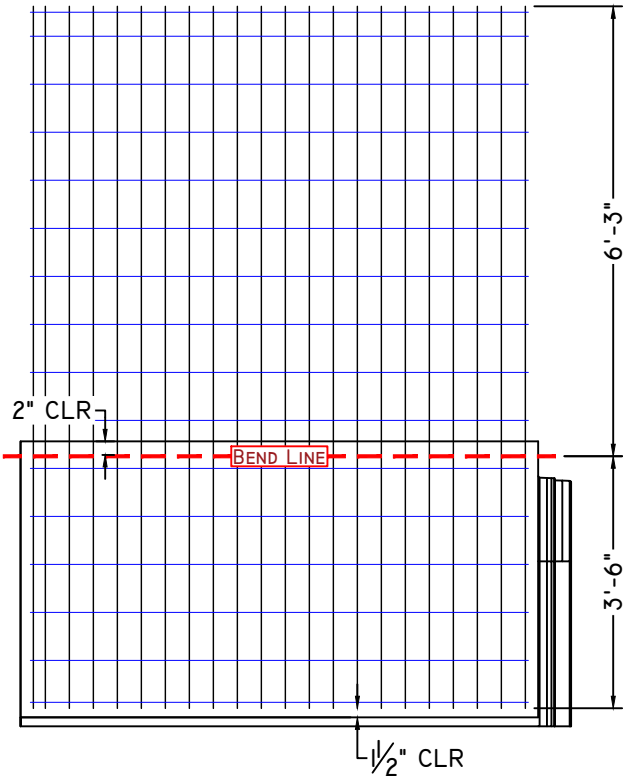
Reviewed By:

Jason Stetson, P.E., Fabrication Engineer

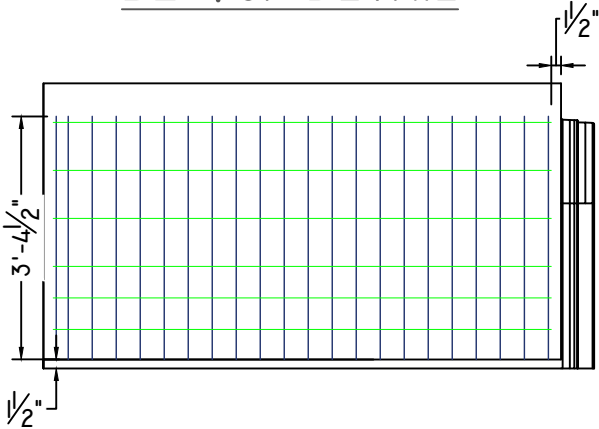
- DESIGN NOTES:
- Concrete
 - 1.1. COMP. STRENGTH MIN. 5,000PSI @ 28 DAYS
 - 1.2. AIR-ENTRAINMENT CONTENT OF: 5% - 8%
 - Structural Reinforcement:
 - 2.1. BAR PER ASTM A615, GRADE 60
 - 2.2. WWF PER ASTM A1064, GRADE 75
 - 2.3. INTEGRATE REBAR WITH LIFTING INSERT(S)
 - 2.4. INTERRUPTED BAR AREAS WILL BE REPLACED EACH SIDE WITH HALF THE AFFECTED AREA
 - 2.5. DESIGNED FOR 125% HL-93 WHEEL LOAD RATING
 - 2.6. 2" CLR EXTERIOR, 1 1/2" CLR INTERIOR
 - Manufacturing / Installation:
 - 3.1. JOINTS SEALED WITH BUTYL RUBBER SEALANT
 - 3.2. *93'-11 1/4" PROJECTED LENGTH WHEN FACTORING 1/2" MAX. GROWTH PER JOINT
 - Soil / Fill Requirements:
 - 4.1. 4' ± 6.5' EARTH COVER (FINAL CONDITION)
 - 4.2. 18" MIN. COVER FOR CONSTRUCTION (HL-93) LOADING

Note: Some details not shown for clarity
SCALE: 3/8" = 1'-0" Unless otherwise noted

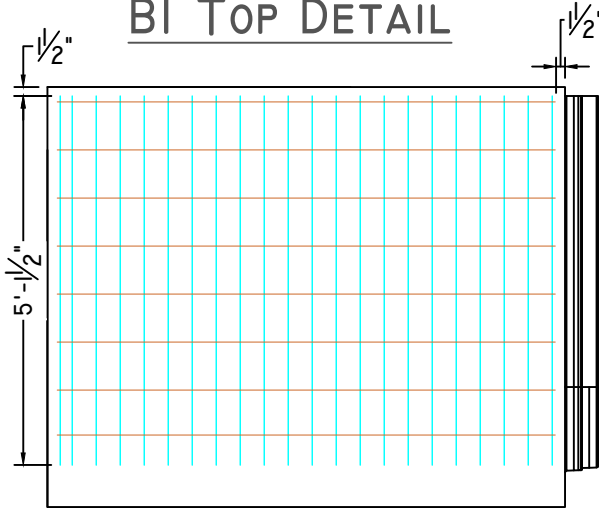
STRUCTURE NAME: 6'-0" x 10'-0" x 94' CLAMSHELL BOX CULVERT		
JOB NAME: DIXFIELD ROUTE 142		
LOCATION: DIXFIELD, ME.		
CONTRACTOR: MDOT		
DRAWN BY: JWP	DATE: 11/26/2024	PROJECT MGR: J.B.
REV.#: 0.02	DATE: 02/11/2025	SHEET: 2 OF 4



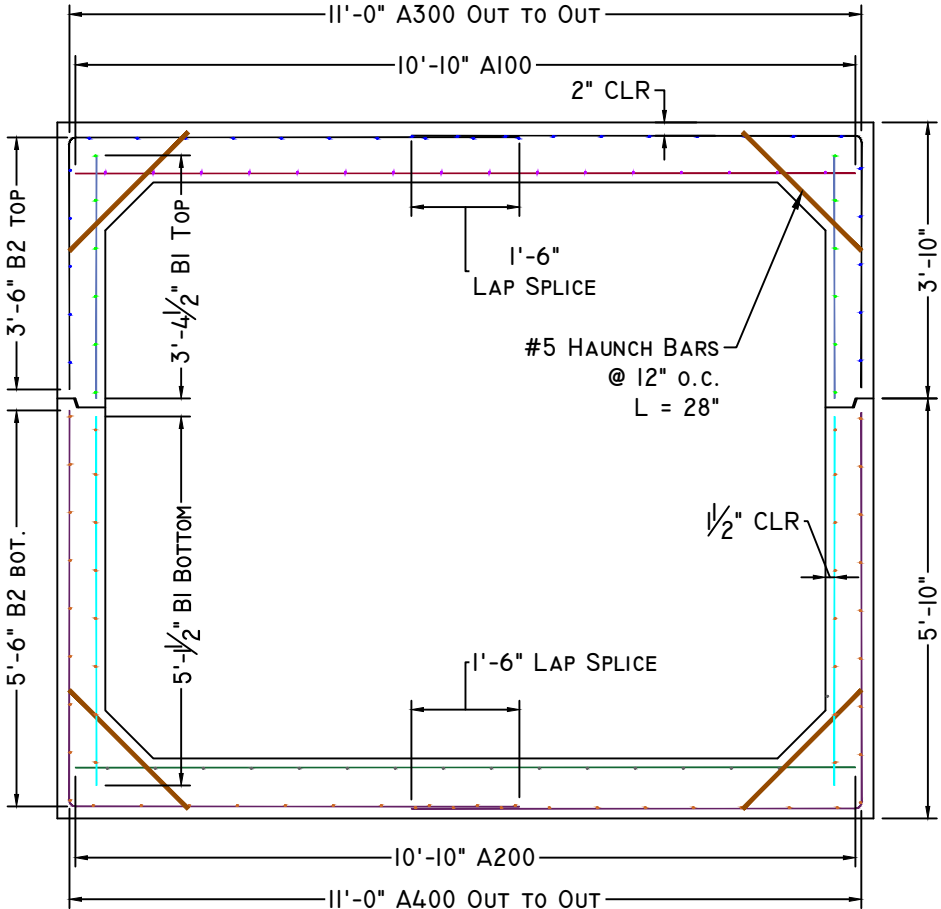
B2 TOP DETAIL



BI TOP DETAIL



BI BOTTOM DETAIL

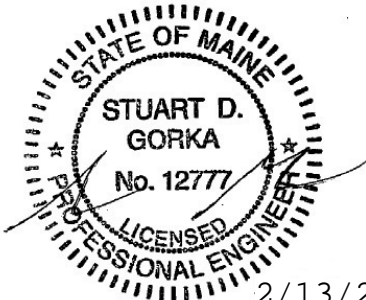


WWR DIMENSION DETAIL

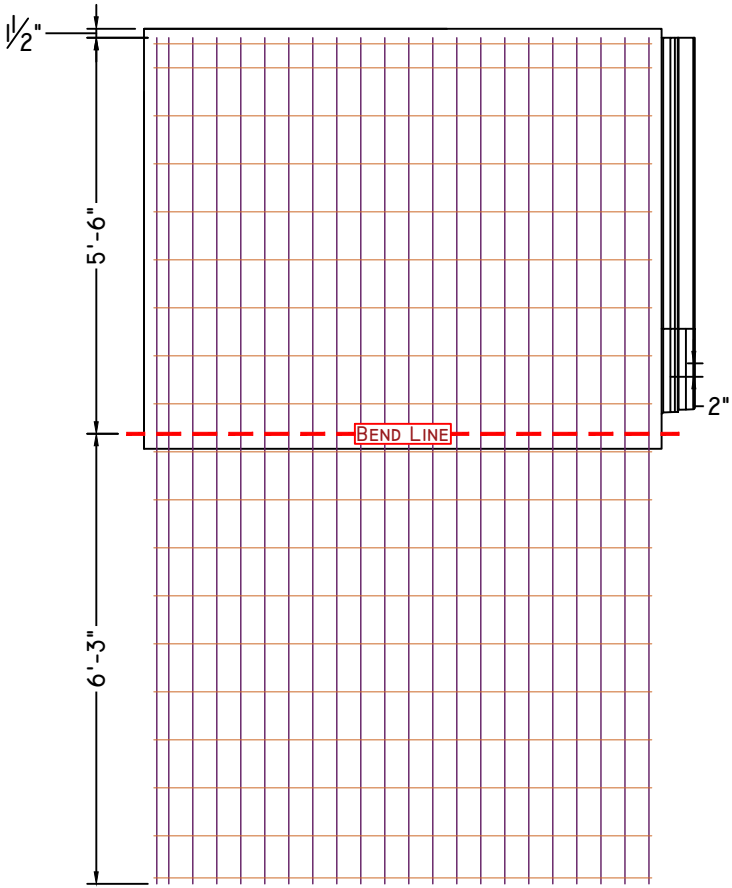
SCALE: 1/8" = 1'-0"

CONCRETE ENGINEERING SOLUTIONS, LLC

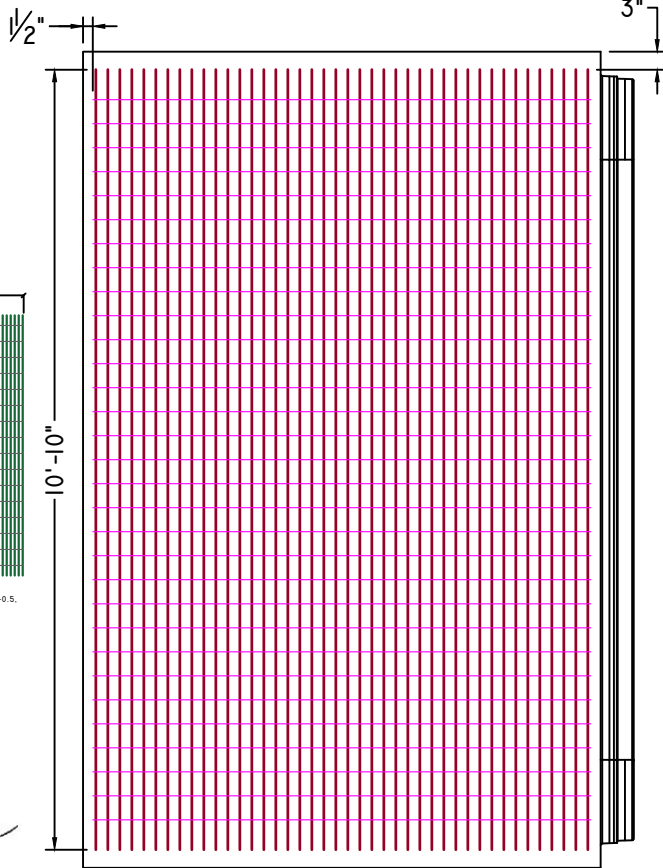
301 PINE VIEW ESTATES
MOUNTAIN TOP, PA 18707
PHONE: 570-868-2081
FAX: 570-868-2082
concreteengsolutions.com



2/13/25



B2 BOT. DETAIL



AI00/A200 DETAIL



Superior Concrete, LLC
982 MINOT AVE. AUBURN, ME. 04210
TEL: 207-784-1388
FAX: 207-783-4039
WWW.AMERICANCONCRETE.COM

ITEM	QTY	BILL OF MATERIALS



MaineDOT

REVIEWED

Mar 24, 2025

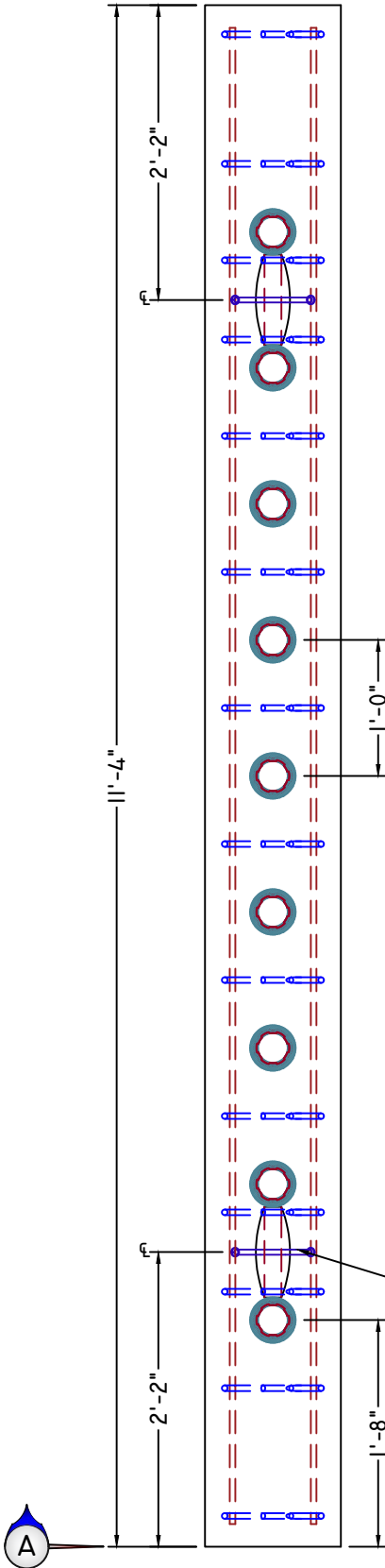
THIS DOCUMENT HAS BEEN REVIEWED IN ACCORDANCE
WITH STATE OF MAINE STANDARD SPECIFICATIONS
SECTION 105.7 – WORKING DRAWINGS

Reviewed By: 
Jason Stetsky, P.E., Fabrication Engineer

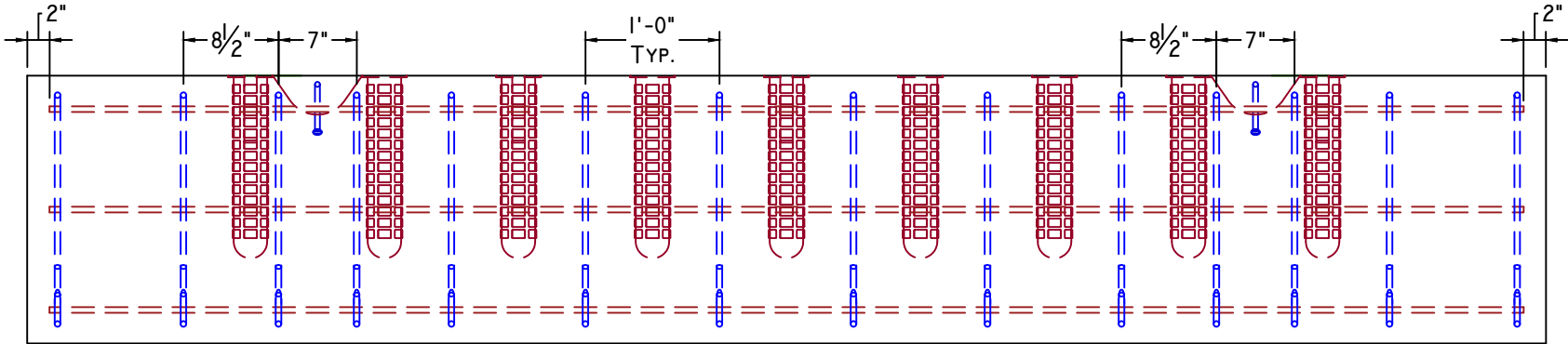
- DESIGN NOTES:
- Concrete
 - 1.1. COMP. STRENGTH MIN. 5,000PSI @ 28 DAYS
 - 1.2. AIR-ENTRAINMENT CONTENT OF: 5% - 8%
 - Structural Reinforcement:
 - 2.1. BAR PER ASTM A615, GRADE 60
 - 2.2. WWF PER ASTM A1064, GRADE 75
 - 2.3. INTEGRATE REBAR WITH LIFTING INSERT(S)
 - 2.4. INTERRUPTED BAR AREAS WILL BE REPLACED EACH SIDE WITH HALF THE AFFECTED AREA
 - 2.5. DESIGNED FOR 125% HL-93 WHEEL LOAD RATING
 - 2.6. 2" CLR EXTERIOR, 1 1/2" CLR INTERIOR
 - Manufacturing / Installation:
 - 3.1. JOINTS SEALED WITH BUTYL RUBBER SEALANT
 - 3.2. *93'-11 1/4" PROJECTED LENGTH WHEN FACTORING 1/2" MAX. GROWTH PER JOINT
 - Soil / Fill Requirements:
 - 4.1. 4' ± 6.5' EARTH COVER (FINAL CONDITION)
 - 4.2. 18" MIN. COVER FOR CONSTRUCTION (HL-93) LOADING

Note: Some details not shown for clarity
SCALE: 3/4" = 1'-0" Unless otherwise noted

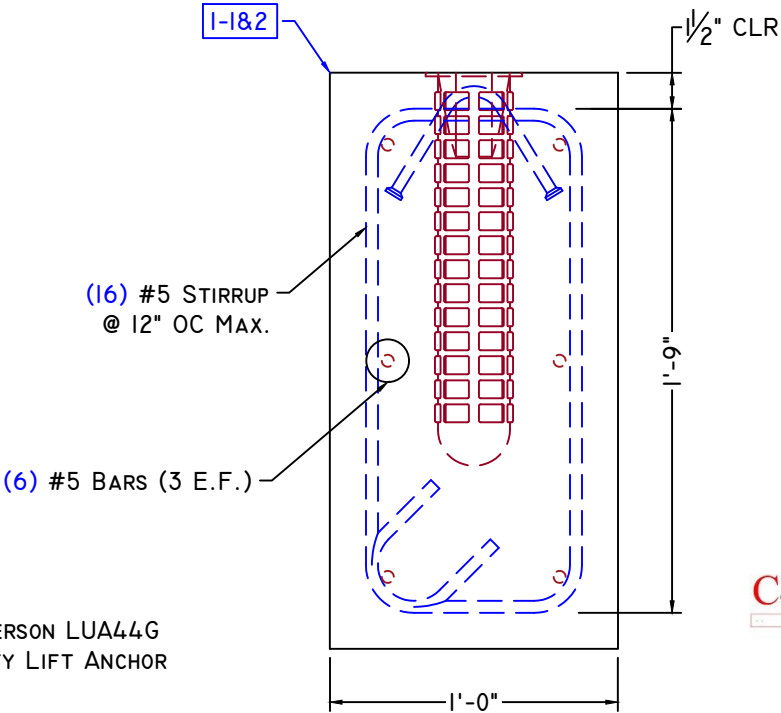
STRUCTURE NAME: 6'-0" x 10'-0" x 94' CLAMSHELL BOX CULVERT		
JOB NAME: DIXFIELD ROUTE 142		
LOCATION: DIXFIELD, ME.		
CONTRACTOR: MDOT		
DRAWN BY: JWP	DATE: 11/26/2024	PROJECT MGR: J.B.
REV.#: 0.02	DATE: 02/11/2025	SHEET: 3 OF 4



PLAN VIEW

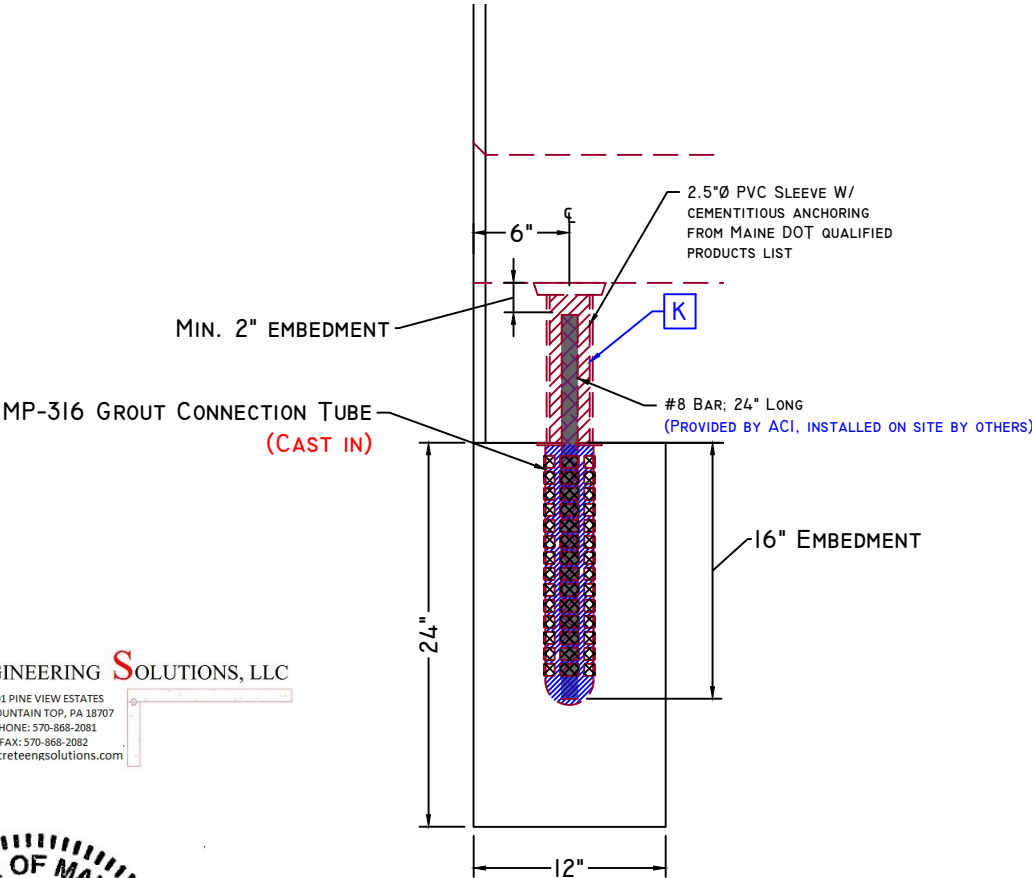
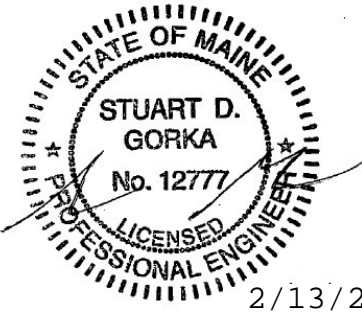


ELEVATION VIEW



SECTION AA REBAR VIEW
SCALE: 1-1/2" = 1'-0"

CONCRETE ENGINEERING SOLUTIONS, LLC
101 PINE VIEW ESTATES
MOUNTAIN TOP, PA 18707
PHONE: 570-868-2081
FAX: 570-868-2082
concreteengsolutions.com



TOEWALL SECTION AA VIEW
SCALE: 1" = 1'-0"



Superior Concrete, LLC
982 MINOT AVE. AUBURN, ME. 04210
TEL: 207-784-1388
FAX: 207-783-4039
WWW.AMERICANCONCRETE.COM

ITEM	QTY	BILL OF MATERIALS



REVIEWED

Mar 24, 2025

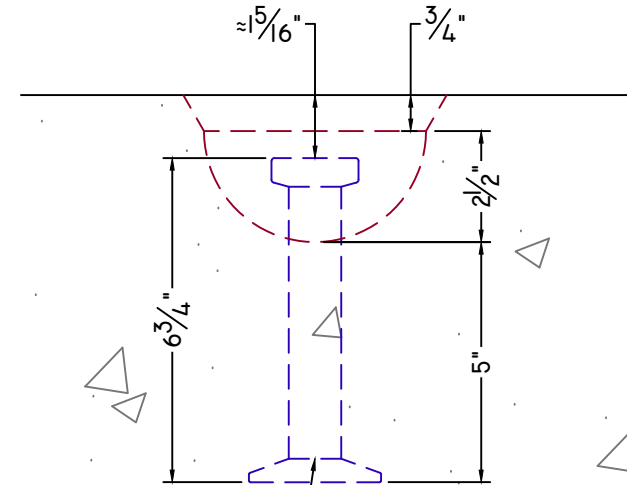
THIS DOCUMENT HAS BEEN REVIEWED IN ACCORDANCE
WITH STATE OF MAINE STANDARD SPECIFICATIONS
SECTION 105.7 – WORKING DRAWINGS

Reviewed By: 
Jason Stetson, P.E., Fabrication Engineer

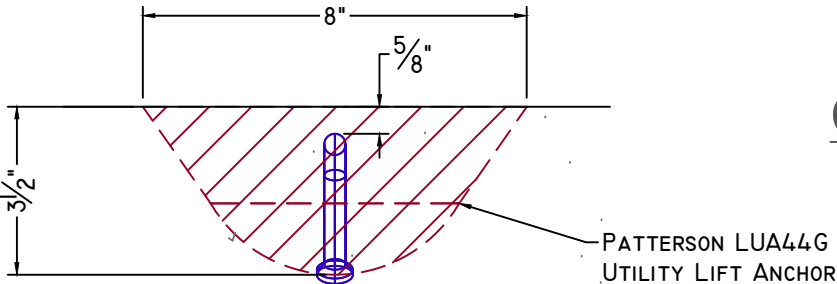
- DESIGN NOTES:
- Concrete
 - COMP. STRENGTH MIN. 5,000PSI @ 28 DAYS
 - AIR-ENTRAINMENT CONTENT OF: 5% - 8%
 - Structural Reinforcement:
 - BAR PER ASTM A615, GRADE 60
 - WWF PER ASTM A1064, GRADE 75
 - INTEGRATE REBAR WITH LIFTING INSERT(S)
 - INTERRUPTED BAR AREAS WILL BE REPLACED EACH SIDE WITH HALF THE AFFECTED AREA
 - DESIGNED FOR 125% HL-93 WHEEL LOAD RATING
 - 2" CLR EXTERIOR, 1 1/2" CLR INTERIOR
 - Manufacturing / Installation:
 - JOINTS SEALED WITH BUTYL RUBBER SEALANT
 - *93'-11 1/4" PROJECTED LENGTH WHEN FACTORING 1/2" MAX. GROWTH PER JOINT
 - Soil / Fill Requirements:
 - 4' ± 6.5' EARTH COVER (FINAL CONDITION)
 - 18" MIN. COVER FOR CONSTRUCTION (HL-93) LOADING

Note: Some details not shown for clarity
SCALE: 3" = 1'-0" Unless otherwise noted

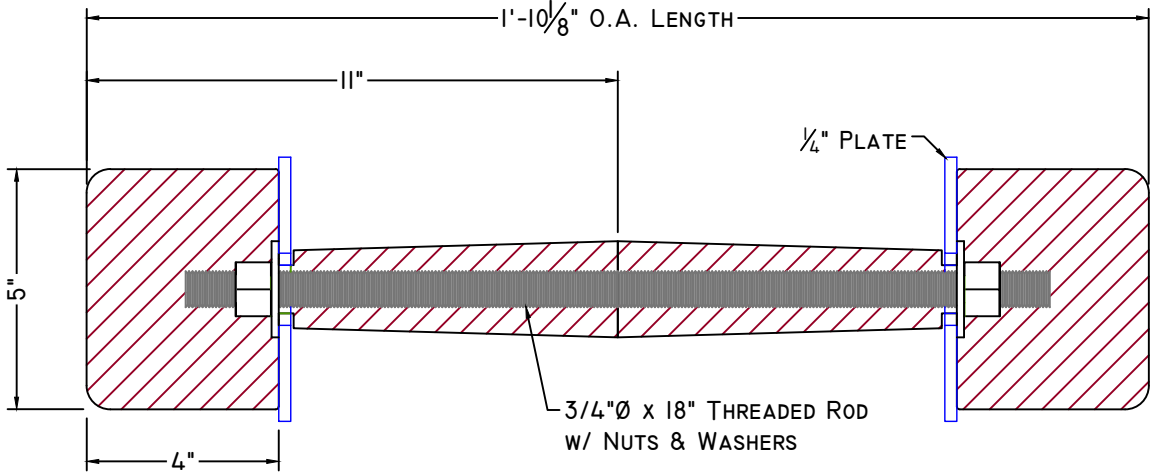
STRUCTURE NAME: 6'-0" x 10'-0" x 94' CLAMSHELL BOX CULVERT		
JOB NAME: DIXFIELD ROUTE 142		
LOCATION: DIXFIELD, ME.		
CONTRACTOR: MDOT		
DRAWN BY: JWP	DATE: 11/26/2024	PROJECT MGR: J.B.
REV.#: 0.02	DATE: 02/11/2025	SHEET: 4 OF 4



LIFTING PIN DETAIL

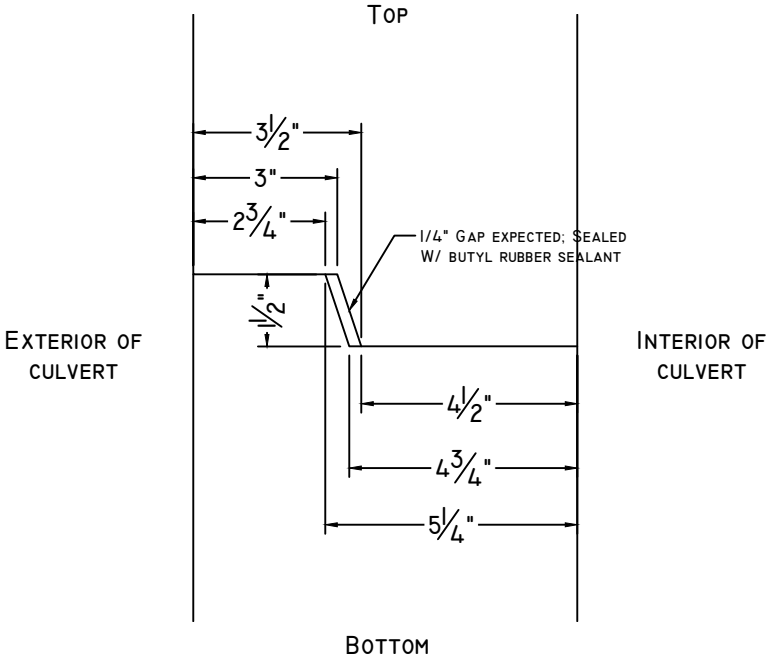
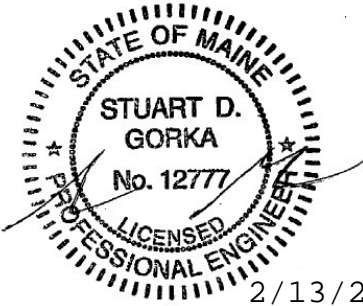


UTILITY LIFT ANCHOR
DETAIL

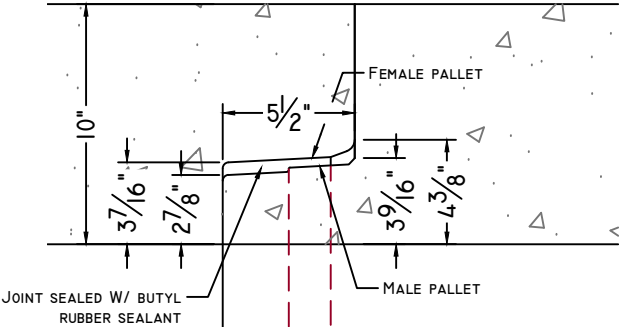


BOLT POCKET DETAIL

CONCRETE ENGINEERING SOLUTIONS, LLC
101 PINE VIEW ESTATES
MOUNTAIN TOP, PA 18707
PHONE: 570-868-2081
FAX: 570-868-2082
concreteengsolutions.com



CLAMSHELL JOINT DETAIL



CULVERT JOINT DETAIL

SCALE: 1 1/2" = 1'-0"