

REVISIONS

NO.	DATE	DESCRIPTION	BY
1	5-17-61	ADDED PARCEL BY AND DEED BY W. W. BROWN, B. B. BROWN, EARL C. BROWN	J.L.
2	1-5-62	ADDED DISCONTINUANCE OF TOWN LINE	J.L.
3	1-5-62	ADDED DISCONTINUANCE OF TOWN LINE	J.L.
4			
5			

ITEM	FIGURED	PLOTTED	CHECKED
BASE LINE			
TOPOGRAPHY			
R/W LINES			
AREAS			
R/W MON.			
CO. RECORD			

ALL REMAINING AREAS SHOWN ON R/W PLANS FOR F.A.S. PROJ. No. S-0131(2) WERE OBTAINED FROM STRIP MAP

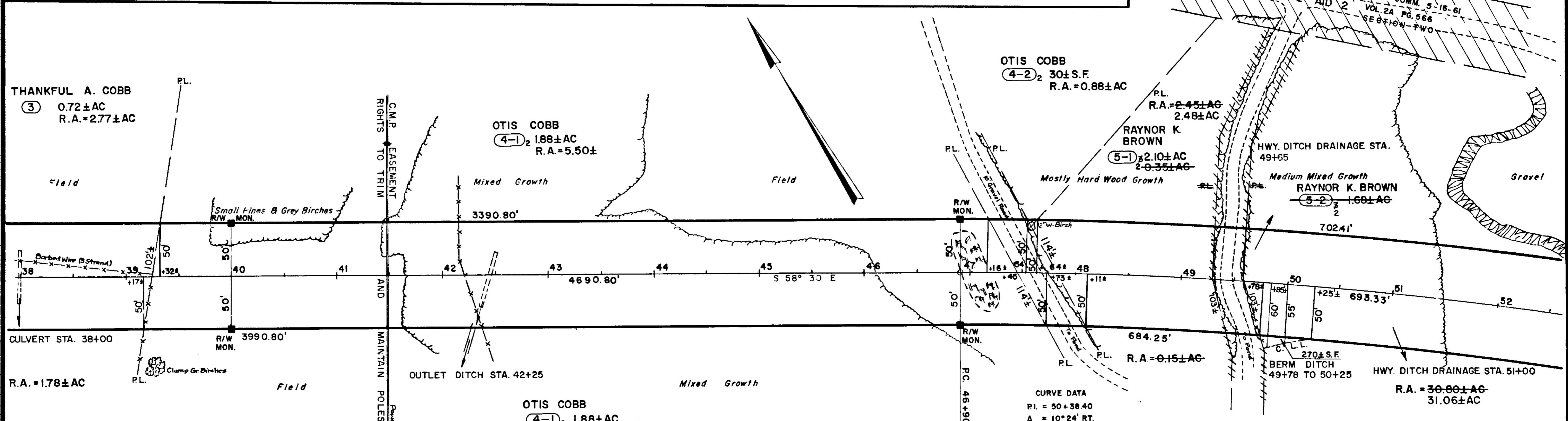
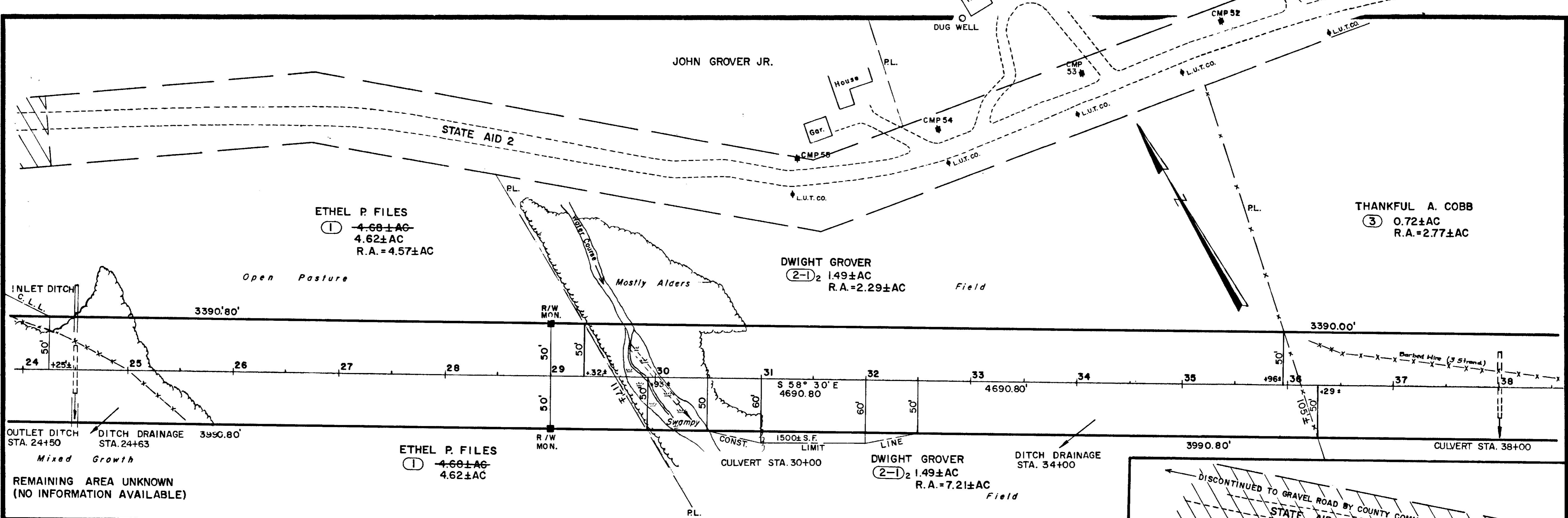
EASTERN DIV. PLAN FILED IN PLAN BOOK: H PAGE: 43
WESTERN DIV. PLAN FILED IN PLAN BOOK: 3 PAGE: 24

NO.	GRANTOR	INSTRUMENT	DATE	BOOK	PAGE
1	ETHEL P. FILES	CONDEMNATION	8/4/60	175	398
5A	RAYNOR K. BROWN	RECEIPT	12/14/61	177	586
1	ETHEL P. FILES	CONDEMNATION	8/4/60	581	480

MAINE STATE HIGHWAY COMMISSION
RIGHT OF WAY MAP
STATE AID HIGHWAY No. "1 & 2"
STONEHAM - ALBANY OXFORD COUNTY
F.A.S. PROJECT S-0131(2)

APPROVED: DAVID H. STEVENS CHAIRMAN
PERRY S. FURBUSH
R. LEON WILLIAMS CHIEF ENGINEER

DATE: AUGUST 1960
SCALE: 1 INCH = 50 FEET
SHEET NO. 1 OF 4 SHEETS
S.H.C. FILE NO. 9-117



CURVE DATA

RI =	50 + 38.40
A =	10° 24' RT.
D =	1° 30'
T =	347.60'
L =	693.33'
R =	3819.83'

PLAN FILED IN PLAN BOOK: H PAGE: 44

NO.	GRANTOR	COUNTY RECORD		
		INSTRUMENT	DATE	BOOK PAGE
1	ETHEL P. FILES	CONDEMNATION	8/4/60	581 480
2	DWIGHT GROVER	RECEIPT	9/2/60	581 536/7
3	THANKFUL A. COBB	RECEIPT	9/2/60	581 537
4	OTIS COBB	RECEIPT	9/2/60	581 536
5	RAYNOR K. BROWN	RECEIPT	9/7/60	581 549/50
2	JOHN D. GROVER	EASEMENT	8/14/84	1273 55

**MAINE STATE HIGHWAY COMMISSION
RIGHT OF WAY MAP**

STATE AID HIGHWAY No. "2"

ALBANY OXFORD COUNTY

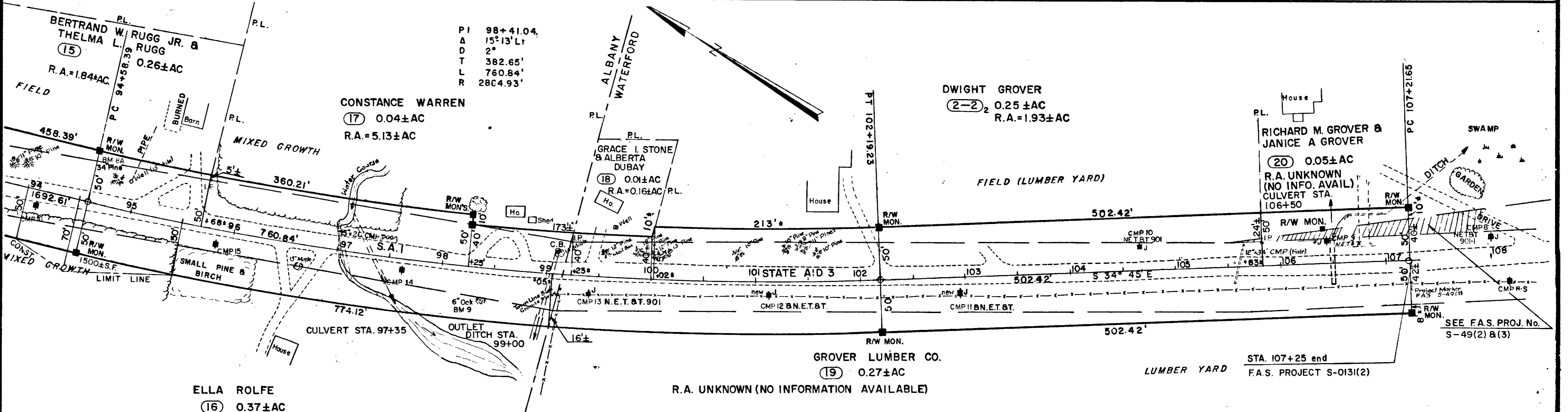
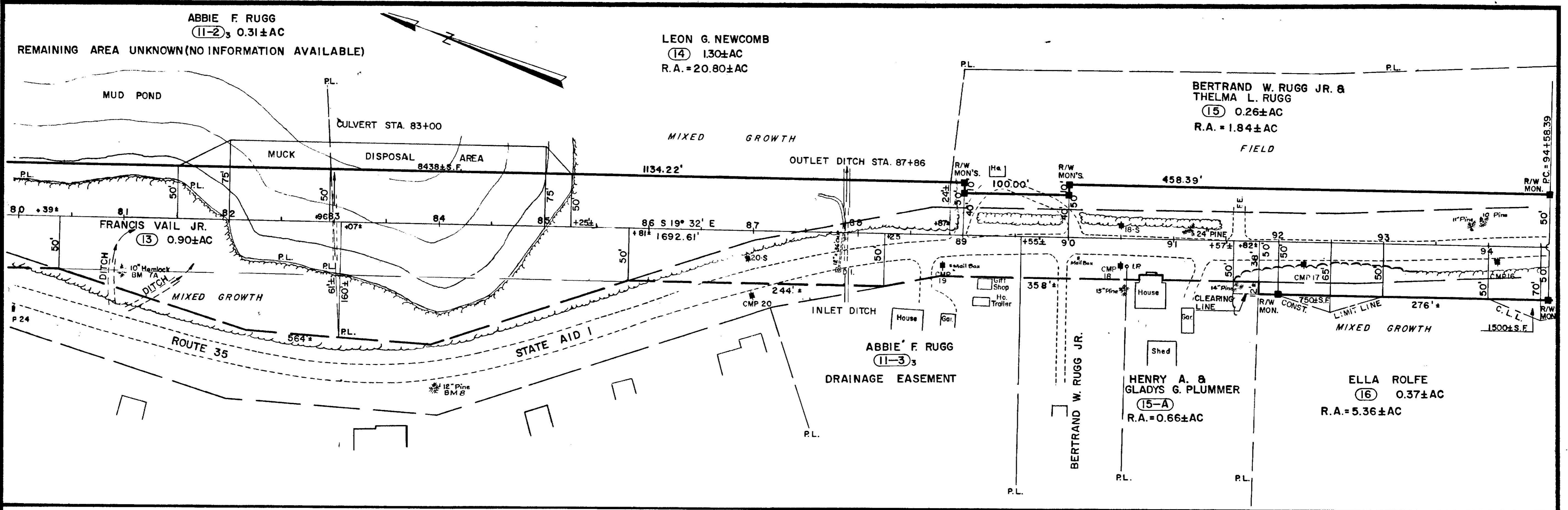
F.A.S. PROJECT S-0131(2)

APPROVED: DAVID H. STEVENS CHAIRMAN
PERRY S. FURBUSH
R. LEON WILLIAMS CHIEF ENGINEER

DATE: AUGUST 1960
SCALE: 1 INCH = 50 FEET
SHEET NO. 2 OF 4 SHEETS

S.H.C. FILE NO. 9-117

ITEM REQUIRED PLOTTED CHECKED
L.L. W.K. G.E.H. W.K. G.E.H.
L.L. W.K. W.K. W.K. W.K.
L.L. W.K. W.K. W.K. W.K.
L.L. W.K. W.K. W.K. W.K.



NO.	DATE	DESCRIPTION	BY
1	1/13/61	REVISION	ALL
2			
3			
4			

NO.	DATE	DESCRIPTION	BY
1	1/13/61	REVISION	ALL
2			
3			
4			

PLAN FILED IN PLAN BOOK: H PAGE: 46

NO.	GRANTOR	INSTRUMENT	DATE	BOOK	PAGE
2	DWIGHT GROVER	RECEIPT	9/2/60	581	536/7
11	ABBIE F. RUGG	RECEIPT	9/14/60	581	557
13	FRANCIS VAIL JR.	RECEIPT	1/13/61	598	402
14	LEON G. NEWCOMB	RECEIPT	9/2/60	581	539
15	BERTRAND W. & THELMA L. RUGG	CONDEMNATION	8/4/60	581	480
15A	HENRY A. & GLADYS G. PLUMMER	RELEASE	9/27/60	581	584
16	ELLA ROLFE	RECEIPT	9/2/60	581	538/9
17	CONSTANCE WARREN	RECEIPT	9/7/60	581	550
18	GRACE I. STONE & ALBERTA DUBAY	RECEIPT	9/4/62	610	245
19	GROVER LUMBER CO.	RECEIPT	9/7/60	581	549
20	RICHARD M. & JANICE A. GROVER	RECEIPT	9/2/60	581	537/8
20	RICHARD M. & JANICE A. GROVER	EASEMENT	6/9/61	599	175

MAINE STATE HIGHWAY COMMISSION
RIGHT OF WAY MAP

STATE AID HIGHWAY No. "1 & 3"
 ALBANY-WATERFORD OXFORD COUNTY
 F.A.S. PROJECT S-013(2)

APPROVED: _____
 DATE: AUGUST 1960 DAVID H. STEVENS CHAIRMAN
 SCALE: 1 INCH = 50 FEET PERRY S. FURBUSH
 SHEET NO. 4 OF 4 SHEETS R. LEON WILLIAMS
 S.H.C. FILE NO. 9-117

[Signature]
 CHIEF ENGINEER