

## 27704.00 Region 1 ADA – 2025

### Auburn, Intersection of Turner Street and Dennison Street



#### ABN\_ADA#13

#### **CR14743**

Reconstruct Pedestrian Ramp on LT side of Dennison Street (West)

- Reconstruct similar to Standard Detail 801(22)
- Remove and repave approximately 50 SF of HMA sidewalk
- Regrade approximately 50 SF of sidewalk
- Remove 3 LF section of granite curb
- Move remaining 9 LF of granite curb (including terminal section) to end of removed 3 LF of granite curb area
- Install 16 SF (4~4 SF) detectable warning field (DWF) in an "L" shaped pattern (3 plates across width of opening, 1 plate parallel to sidewalk leading up to terminal curb)

Latitude 44.105654

Longitude -70.230007

Reference 801(22)

## **ABN ADA#14**

### **CR14747**

Reconstruct Pedestrian Ramp on RT side of Dennison Street (West)

- Reconstruct similar to Standard Detail 801(16)
- Remove and repave approximately 150 SF of HMA sidewalk
- Regrade approximately 150 SF of sidewalk
- Remove 3.5 LF section of granite curb at SW portion of ramp and move terminal curb section to end of removed section
- Install 10 LF of radius curb tipping up 5 LF to center of radius and tipping down 5 LF to end of radius
- Maintain portion of sidewalk and curb leading to start of the NW drainage grate
- Construct 6 LF opening with 8 SF (2~4 SF plates) detectible warning field (DWF) starting at the edge of the NW drainage grate
- Construct 5 LF opening with 8 SF (2~4 SF plates) detectible warning field (DWF) starting at end of 10 LF radius curb

Latitude 44.105747

Longitude -70.230098

Reference 801(16)

## **ABN ADA#16**

### **CR14746**

Reconstruct Pedestrian Ramp on LT side of Dennison Street (East)

- Construct similar to Standard Detail 801(20)
- Remove and replace approximately 50 SF of HMA sidewalk
- Regrade approximately 50 SF of HMA sidewalk
- Install 10 LF curb ramp opening
- Maintain both left and right parallel ramps
- Install 20 SF (5~4 SF) of radial detectable warning field (DWF) plates across entire width of ramp opening

Latitude 44.105864

Longitude -70.229932

Reference 801(20)

## **ABN ADA#17**

### **CR00693**

Reconstruct Pedestrian Ramp on RT side of Dennison Street (East)

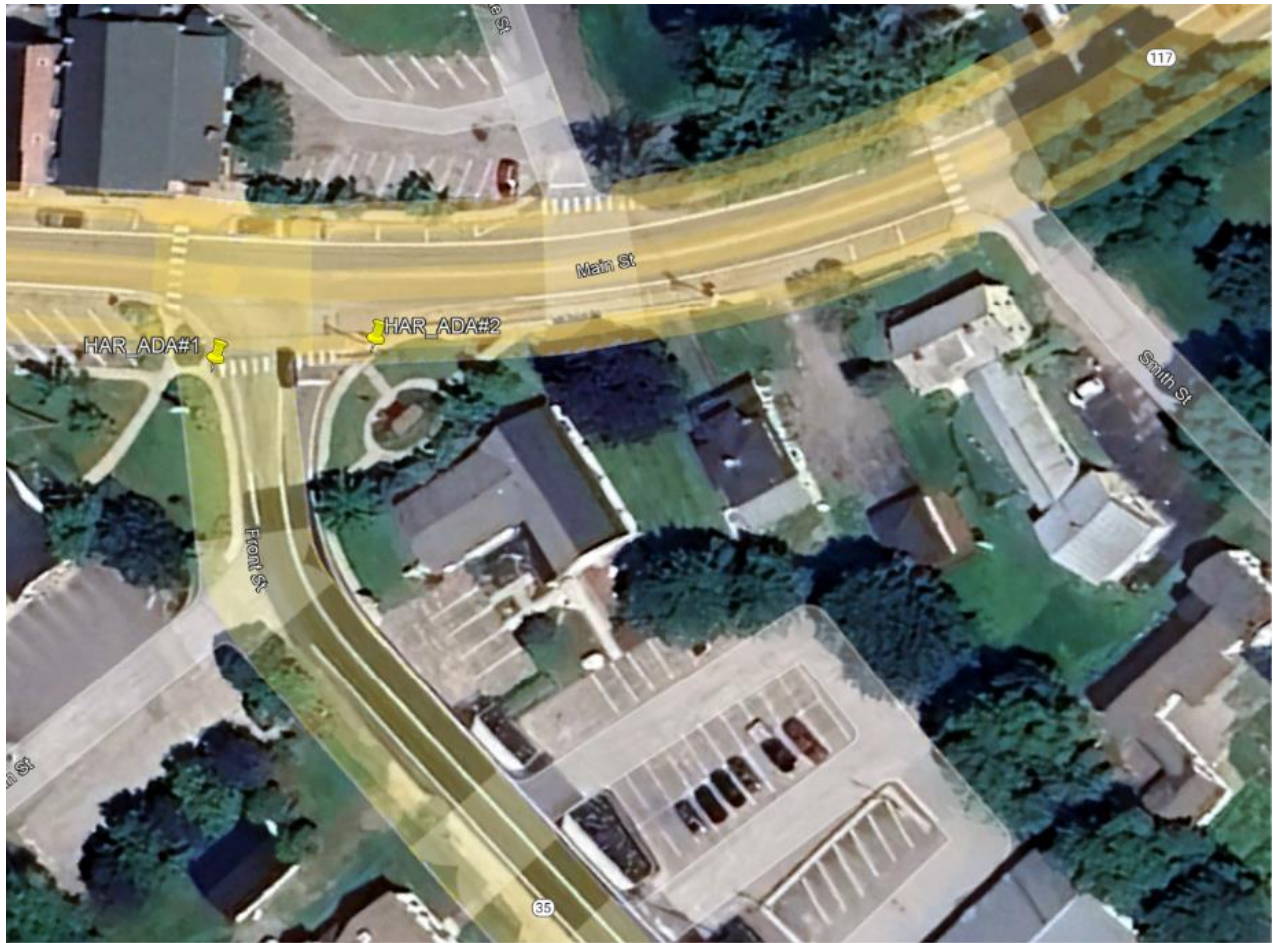
- Construct similar to Standard Detail 801(20)
- Remove and repave 18 SF (2' x 9') section of pavement surrounding the bottom of the opening
- Regrade 18 SF (2' x 9') section of pavement surrounding the bottom of the opening
- Remove existing detectable warning field (DWF) plates and replace with an 18 SF (4.5~4 SF) radial detectible warning field (DWF) plates across entire width of ramp opening

Latitude 44.105747

Longitude -70.229835

Reference 801(20)

## Harrison, ME-35 (Front Street) at ME-117 (Main Street)



### HAR\_ADA#1

### **CR08790**

Reconstruct Pedestrian Ramp on LT side of Front Street (ME-35) at Main Street (ME-117)

- Construct similar to Standard Detail 801(14)
- Remove and replace approximately 35 SF of concrete sidewalk
- Regrade approximately 35 SF of sidewalk
- Install 14 SF (2.5~4 SF) detectible warning field (DWF) plates, set directly in concrete across the entire width of ramp opening

Latitude 44.11018

Longitude -70.67975

Reference 801(14)

## HAR ADA#2

### CR12564

Reconstruct Pedestrian Ramp on RT side of Front Street (ME-35) at Main Street (ME-117)

- Reconstruct similar to Standard Detail 801(20)
- Remove and replace approximately 180 SF of concrete sidewalk
- Remove and replace approximately 72 SF of HMA at bottom of ramp
- Regrade approximately 180 SF of sidewalk
- Remove 30 LF of existing granite curb
- Install 14 LF of new type 1 circular granite curb
- Install 16 LF of transition curb (two 8 LF tipdown sections)
- Install 12 SF (2~4 SF) detectible warning field (DWF) plates, set directly in concrete across the entire width of ramp opening
- Adjust existing catch basin top

Latitude 44.11001

Longitude -70.67953

Reference 801(20)



## Oxford, ME-121 (Pleasant Street) at School Entrance



### OXF ADA#1

### **CR16678**

Reconstruct Pedestrian Ramp on LT side of Pleasant Street Crossing at School Entrance

- Reconstruct similar to Standard Detail 801(14)
- Shift ramp 22 LF North
- Remove and replace approximately 420 SF of HMA sidewalk leading up to school entrance
- Regrade approximately 420 SF of sidewalk
- Remove and reset 16 LF of granite curb
- Install 50 LF of new HMA curb
- Construct one 6 LF ramp opening
- Install 12 SF (3~4 SF) detectible warning field (DWF) plates across the entire width of ramp opening

Latitude 44.13439

Longitude -70.49448

Reference 801(14)

## **OXF ADA#2**

### **CR16679**

#### Reconstruct Pedestrian Ramp on RT side of Pleasant Street Crossing at School Entrance

- Reconstruct similar to Standard Detail 801(14)
- Shift ramp 22 LF North
- Remove and replace approximately 300 SF of HMA sidewalk leading up to existing pedestrian pole
- Regrade approximately 300 SF of sidewalk
- Remove and Reset 16 LF of granite curb
- Install 25 LF of new HMA curb
- Construct one 6 LF ramp opening
- Install 12 SF (3~4 SF) detectible warning field (DWF) plates across the entire width of ramp opening

Latitude 44.13437

Longitude -70.49435

Reference 801(14)

## Westbrook, Spring Street at Main Street (Route 25B)



### WES\_ADA#1

### **CR09159**

Reconstruct Pedestrian Ramp on RT side of Spring Street Crossing at Main Street (Rte. 25B)

- Construct similar to Standard Detail 801(16)
- Remove and replace approximately 120 SF of concrete sidewalk
- Regrade approximately 120 SF of sidewalk
- Remove and repave 64 SF (2' X 32') of roadway shoulder
- Remove and reset approximately 20 LF of granite curb
- Construct two 6 LF openings
- Install 24 SF (3~4 SF) detectible warning field (DWF) plates across the entire width of each opening

Latitude 43.67636

Longitude -70.36328

Reference 801(16)

## **WES ADA#2**

### **CR09157**

Reconstruct Pedestrian Ramp on LT side of Spring Street Crossing at Main Street (Rte. 25B)

- Reconstruct similar to Standard Detail 801(16)
- Remove and replace approximately 180 SF of concrete sidewalk
- Regrade approximately 180 SF of sidewalk
- Remove and repave 64 SF (2' X 32') of roadway shoulder
- Remove and reset 22 LF of granite curb at front of ramp
- Remove and reset 24 LF of granite curb at back of ramp
- Construct ramp to include a 6 LF opening on the Spring Street side and a 4 LF opening on the Main Street side
- Ramp on Main Street to match into existing joint at the edge of existing crosswalk
- Install 20 SF (5~4 SF) detectible warning field (DWF) plates across entire width of openings

Latitude 43.676408

Longitude -70.363048

Reference 801(16)



## Westbrook, Spring Street at William Clark Drive



### WES ADA#2A

#### **CR09299**

Retain existing Pedestrian Ramp. Adjust curblane drainage between curb ramp and drainage grate on RT side of Spring Street at SW corner of William Clark Drive

- Construct 160 SF (80 LF by 2 LF) 1 ½" mill and overlay between curb ramp and catch basin

Latitude 43.675403

Longitude -70.362866

Reference N/A

### WES ADA#2B

#### **CR09300**

Retain existing Pedestrian Ramp. Adjust curblane drainage between curb ramp and drainage grate on LT side of Spring Street at SE corner of William Clark Drive.

- Construct 160 SF (80 LF by 2 LF) 1 ½" mill and overlay between curb ramp and catch basin

Latitude 43.675481

Longitude -70.362590

Reference N/A

## Westbrook, Spring Street at East Valentine Street



### WES\_ADA#2C

**TBD**

Reconstruct Pedestrian Ramp near RT side of Spring Street just South of East Valentine Street

- Reconstruct similar to Standard Detail 801(20)
- Remove and reset 20 LF existing bituminous curb
- Remove and replace approximately 110 SF of HMA sidewalk
- Regrade approximately 110 SF of sidewalk
- Remove and repave 44 SF (2' X 22') of roadway shoulder
- Install two 8 LF terminal sections of asphalt curb on both sides of 6 LF opening
- Construct a 6 LF ramp opening
- Install 12 SF (3~4 SF) detectible warning field (DWF) plates across entire width of opening

Latitude 43.672272

Longitude -70.361513

## **WES ADA#2D**

### **TBD**

Reconstruct Pedestrian Ramp on LT side of Spring Street just South of East Valentine Street

- Reconstruct similar to Standard Detail 801(20)
- Remove and replace approximately 100 SF of HMA sidewalk
- Regrade approximately 100 SF of sidewalk
- Construct 8 LF width ramp opening that tapers to existing 5 LF width at top of ramp
- Remove triangular patch of grass on right side of ramp (facing the ramp) and align with the existing edge of walkway just above the ramp
- Install 16 SF (4~4 SF) detectible warning field (DWF) plates across entire width of ramp opening

Latitude 43.672266

Longitude -70.361336

Reference 801(20)

## Westbrook, Spring Street at Glenwood Avenue



### WES\_ADA#3

### **CR02465**

Reconstruct Pedestrian Ramp on LT side of Spring Street Crossing at Glenwood Avenue

- Reconstruct similar to Standard Detail 801(22)
- Remove and replace approximately 75 SF of HMA sidewalk
- Regrade approximately 75 SF sidewalk
- Remove and repave 40 SF (2' X 20') of roadway shoulder
- Install 15 LF of HMA curb type 3 mold 3 along Glenwood Avenue
- Construct a 5 LF ramp opening directly at edge of roadway
- Install 8 SF (2~4 SF) detectible warning field (DWF) plates across entire width of ramp opening
- Technically infeasible as the ramp slope will exceed the maximum of 8.33%. Therefore, the maximum ramp length of 15 LF is utilized.

Latitude 43.671372

Longitude -70.360978

Reference 801(22)

**WES ADA#3A**

**CR02466**

Reconstruct Pedestrian Ramp on RT side of Spring Street Crossing at Glenwood Avenue

- Reconstruct similar to Standard Detail 801(27)
- Remove and replace approximately 32 SF of HMA sidewalk
- Regrade approximately 32 SF of sidewalk
- Remove and repave 24 SF (2' X 12') of roadway shoulder
- Remove and reconstruct 8 LF of bituminous curb
- Construct a 5 LF ramp opening
- Install 8 SF (2~4 SF plates) detectible warning field (DWF) plates across entire width of ramp opening

Latitude 43.671357

Longitude -70.361112

Reference 801(27)



## Westbrook, Spring Street Crossing



### WES\_ADA#4

**TBD**

Reconstruct Pedestrian Ramp on LT side of Spring Street Crossing

- Reconstruct similar to Standard Detail 801(22)
- Remove and Replace 100 SF of HMA sidewalk
- Install 10 SF (2.5~4 SF) detectable warning field (DWF) plates across entire width of ramp opening
- Grade, Loam and Seed 12' x 2' disturbed area

Latitude 43.6670167

Longitude -70.359133

Reference 801(22)

## **WES ADA#5**

**TBD**

Modify Pedestrian Ramp on RT side of Spring Street Crossing

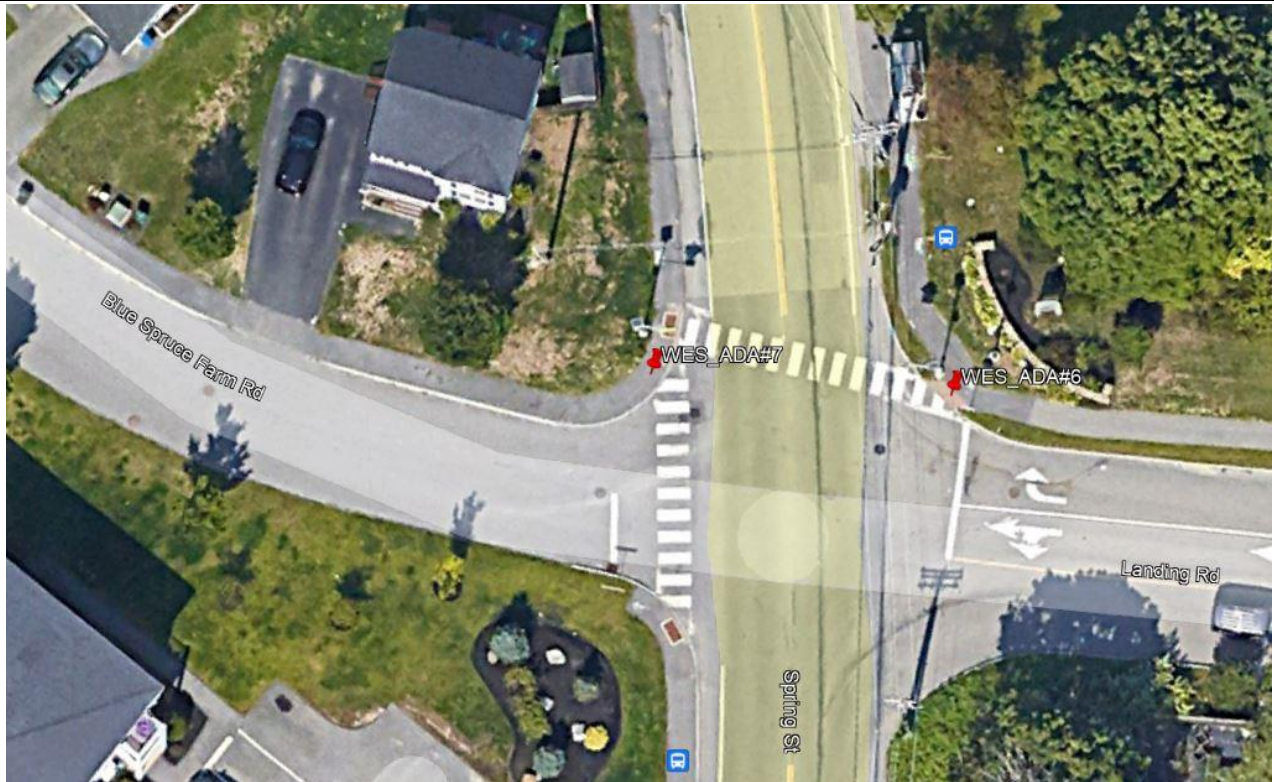
- Reconstruct similar to Standard Detail 801(22)
- Remove and Replace 140 SF of HMA sidewalk
- Install 10 SF (2.5~4 SF) detectable warning field (DWF) plates across entire width of ramp opening
- Grade, Loam and Seed 12' x 2' disturbed area

Latitude 43.666927

Longitude -70.359269

Reference 801(22)

## Westbrook, Spring Street Crossing at Landing Road & Blue Spruce Farm Road



### WES\_ADA#6

### **CR15671**

Reconstruct Pedestrian Ramp on LT side of Spring Street Crossing at Landing Road

- Reconstruct similar to Standard Detail 801(20)
- Remove and regrade 20 SF of sidewalk
- Repave approximately 10 SF of HMA sidewalk
- Install 10 SF (2.5~4 SF) detectable warning field (DWF) plates across entire width of ramp opening
- Remove and repaint 118 SF of crosswalk markings

Latitude 43.665925

Longitude -70.358789

Reference 801(23)

**WES ADA#7**

**CR15669**

Reconstruct Pedestrian Ramp on RT side of Spring Street Crossing at Blue Spruce Farm Road

- Reconstruct similar to Standard Detail 801(20)
- Remove and replace approximately 150 SF of HMA sidewalk
- Regrade approximately 150 SF of sidewalk
- Remove and repave 56 SF (2' X 28') of roadway shoulder
- Remove 28 LF of granite curb
- Reset 16 LF of granite curb (two 8 LF transition sections)
- Install 16 SF (4~4 SF) detectable warning field (DWF) plates across entire width of ramp opening

Latitude 43.665942

Longitude -70.358977

Reference 801(20)



## Ogunquit, Shore Road between Eastview Lane and Jacobs Lot



### OGQ\_ADA#1

**TBD**

Reconstruct pedestrian ramp on RT side of Shore Road crossing at Jacob's Lot

- Reconstruct similar to Standard Detail 801(14)
- Regrade 72 SF of HMA sidewalk
- Install 12 SF (3~4 SF) detectible warning field (DWF) plates across entire width of ramp opening

Latitude 43.248394

Longitude -70.599306

Reference 801(14)

### OGQ\_ADA#2

**TBD**

Reconstruct pedestrian ramp on LT side of Shore Road crossing at Jacob's Lot

- Reconstruct similar to Standard Detail 801(14)
- Regrade 108 SF of HMA sidewalk
- Remove and repave 36 SF (2' X 18') of roadway shoulder
- Remove and reset 12 LF Type 1 Terminal Curb
- Construct a 6 LF ramp opening
- Install 12 SF (3~4 SF) detectible warning field (DWF) plates across entire width of ramp opening

Latitude 43.248458

Longitude -70.599208

Reference 801(14)



### **OGQ ADA#3**

#### **CR02697**

Eliminate crosswalk on Shore Road crossing at Wharf Street

- Remove 80 SF of crosswalk paint across Shore Road
- Extend double yellow pavement markings 8 LF
- Repaint 16 LF of white (8 LF per side of crosswalk)

Latitude 43.248008  
Longitude -70.598461  
Reference N/A

### **OGQ ADA#4**

#### **CR02695**

Eliminate crosswalk on Shore Road crossing at School Street

- Remove 80 SF of crosswalk paint across Shore Road
- Extend double yellow pavement markings 8 LF
- Repaint 16 LF of white (8 LF per side of crosswalk)

Latitude 43.247600  
Longitude -70.598028  
Reference N/A

### **OGQ ADA#5**

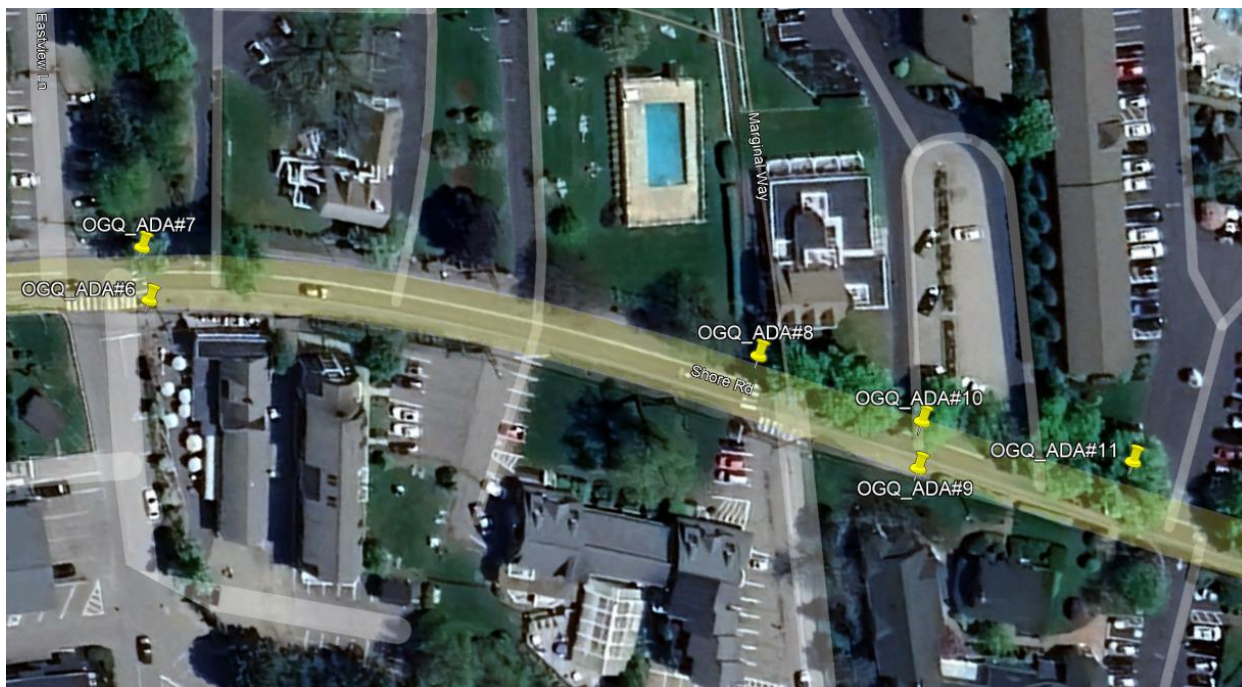
#### **TBD**

Eliminate crosswalk on Shore Road crossing at Sea Chambers

- Remove 80 SF of crosswalk paint across Shore Road
- Extend double yellow pavement markings 8 LF
- Repaint 16 LF of white (8 LF per side of crosswalk)

Latitude 43.247289  
Longitude -70.597728  
Reference N/A

## Ogunquit, Shore Road between Beachmere Place and Cottage Street



### OGQ\_ADA#6

**CR02693**

Reconstruct pedestrian ramp on LT side of Shore Road crossing at Cottage Street

- Reconstruct similar to Standard Detail 801(27)
- Install 12 SF (3~4 SF) detectible warning field (DWF) plates across entire width of ramp opening

Latitude 43.246939

Longitude -70.597628

Reference 801(27)

### **OGQ ADA#7**

#### **TBD**

Reconstruct pedestrian ramp on RT side of Shore Road crossing at Cottage Street

- Reconstruct similar to Standard Detail 801(14)
- Construct 6 LF ramp opening
- Move ramp opening 7 LF South and square up with crosswalk
- Regrade 180 SF of HMA sidewalk
- Remove and repave 60 SF (2' X 30") of roadway shoulder
- Curb at back of sidewalk to remain
- Install 12 SF (3~4 SF) detectible warning field (DWF) plates across entire width of ramp opening

Latitude 43.246994  
Longitude -70.597539  
Reference 801(14)

### **OGQ ADA#8**

#### **TBD**

Eliminate crosswalk on Shore Road crossing at Obeds Lane

- Remove and repave 40 SF (20' X 2') of roadway shoulder
- Regrade 120 SF of HMA sidewalk
- Remove and reset 20 LF of type 1 curb
- Remove 38 SF of crosswalk paint across Shore Road

Latitude 43.246039  
Longitude -70.597139  
Reference N/A

### **OGQ ADA#9**

#### **TBD**

Construct pedestrian ramp on RT side of Shore Road crossing at Trolley Stop South of Obeds Lane

- Construct similar to Standard Detail 801(14)
- Install 12 SF (3~4 SF) detectible warning field (DWF) plates across entire width of ramp opening

Latitude 43.245789  
Longitude -70.597175  
Reference 801(14)

## **OGQ\_ADA#10**

**TBD**

Construct pedestrian ramp on RT side of Shore Road crossing at Trolley Stop South of Obeds Lane

- Construct similar to Standard Detail 801(14)
- Remove and regrade 84 SF HMA sidewalk
- Remove and repave 28 SF (2' X 14') of roadway shoulder
- Paint 50 SF of crosswalk markings leading to OGQ\_ADA#21
- Construct 6 LF ramp opening
- Remove and reset 8 LF of Type 1 curb
- Install 12 SF (3~4 SF) detectible warning field (DWF) plates across entire width of ramp opening

Latitude 43.245802

Longitude -70.597113

Reference 801(14)

## **OGQ\_ADA#11**

**TBD**

Reconstruct pedestrian ramp on RT side of Shore Road crossing at 125 Shore Road

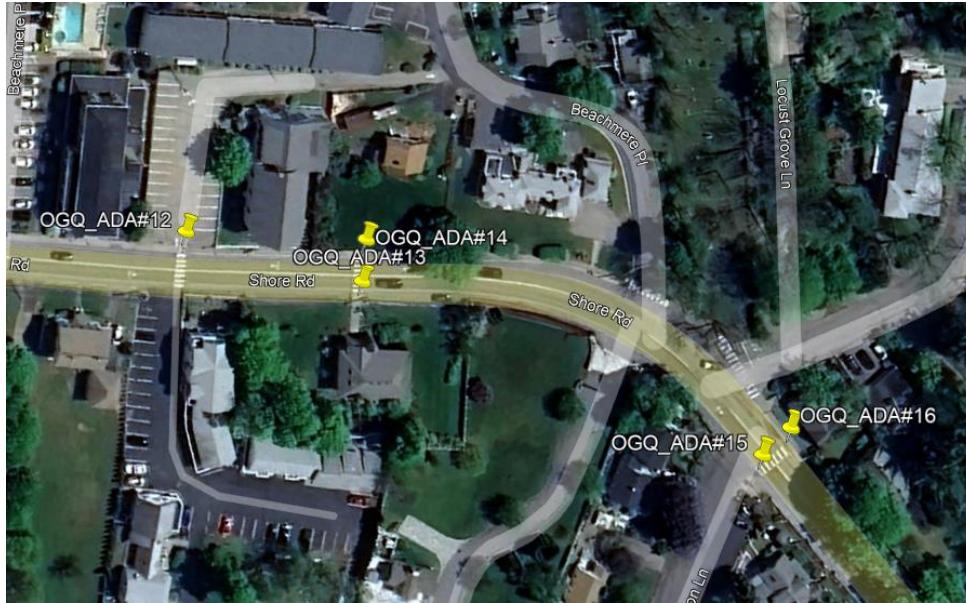
- Reconstruct similar to Standard Detail 801(22)
- Regrade 100 SF of HMA sidewalk
- Remove and repave 38 SF (19' X 2') of roadway shoulder
- Remove and reset 13 LF of Type 1 Curb
- Install 12 SF (3~4 SF) of detectible warning field (DWF) plates across entire width of ramp opening
- Raise grade of landing area

Latitude 43.245233

Longitude -70.596894

Reference 801(22)

## Ogunquit, Shore Road between 157 Shore Road and Morrison Lane



### OGQ\_ADA#12

**TBD**

Eliminate crosswalk at Church driveway entrance at 157 Shore Road

- Remove 68 SF of crosswalk pavement markings across Shore Road

Latitude 43.244456

Longitude -70.596586

Reference N/A

### OGQ\_ADA#13

**TBD**

Reconstruct Pedestrian ramp on LT side of Shore Road crossing at the Library

- Reconstruct similar to Standard Detail 801(22)
- Remove and reset 12 SF of brick walkway
- Regrade 18 SF of shoulder leading up to walkway
- Install 12 SF (3~4 SF) detectible warning field (DWF) plates across entire width of ramp opening

Latitude 43.244056

Longitude -70.596511

Reference 801(22)



#### **OGQ ADA#14**

#### **TBD**

Install detectible warning field plates on RT side of Shore Road crossing at the library

- Install 12 SF (3~4 SF) detectible warning field (DWF) plates across entire width of ramp opening

Latitude 43.244103

Longitude -70.596356

Reference 801(14)

#### **OGQ ADA#15**

#### **TBD**

Reconstruct Pedestrian ramp on LT side of Shore Road crossing at Morrison Lane

- Reconstruct similar to Standard Detail 801(27)
- Regrade 60 SF of HMA sidewalk
- Install 12 SF (3~4 SF) detectible warning field (DWF) plates across entire width of ramp opening

Latitude 43.243119

Longitude -70.596486

Reference 801(27)

#### **OGQ ADA#16**

#### **TBD**

Reconstruct Pedestrian ramp on RT side of Shore Road crossing at Morrison Lane

- Reconstruct similar to Standard Detail 801(14)
- Regrade 50 SF of HMA sidewalk (raise grade of landing approximately 0.5")
- Remove and repave 100 SF (2' x 50') roadway shoulder
- Install 16 LF of HMA curb
- Install 12 SF (3~4-SF) detectible warning field (DWF) plates across entire width of ramp opening

Latitude 43.243061

Longitude -70.596344

Reference 801(14)

## Ogunquit, Shore Road between Stearns Road and Morrison Lane



### OGQ\_ADA#17

**TBD**

Reconstruct Pedestrian ramp on LT side of Shore Road crossing at 221 Shore Road.

- Install 8 SF (2~4-SF plates) detectible warning field (DWF) plates

Latitude 43.242183

Longitude -70.597033

Reference 801(27)

### OGQ\_ADA#18

**CR12438**

Reconstruct Pedestrian ramp on RT side of Shore Road crossing at 221 Shore Road

- Reconstruct similar to Standard Detail 801(14)
- Remove and repave 48 SF (2' x 24') of roadway shoulder
- Regrade 120 SF of HMA Sidewalk
- Install 16 LF of HMA curb
- Reconstruct 20 LF of HMA curb located at back of sidewalk
- Install 12 SF (3~4 SF) detectible warning field (DWF) plates across entire width of ramp opening
- Grade, loam and seed 3' X 20' of disturbed area

Latitude 43.242164

Longitude -70.596878

Reference 801(14)

## **OGQ ADA#19**

### **TBD**

Reconstruct Pedestrian ramp on LT side of Shore Road crossing at Bourne Lane

- Reconstruct similar to Standard Detail 801 (22)
- Regrade 84 SF of HMA Sidewalk
- Shift crosswalk 6 LF North of existing crosswalk
- Install 15 LF of HMA curb
- Remove and repave 30 SF (2' x 15') section of pavement at curb line
- Install 8 SF (2~4 SF) of detectible warning field (DWF) plates across entire width of ramp opening

Latitude 43.241631

Longitude -70.596917

Reference 801(22)

## **OGQ ADA#20**

### **TBD**

Reconstruct Pedestrian ramp on RT side of Shore Road crossing at Bourne Lane

- Reconstruct similar to Standard Detail 801 (22)
- Remove and repave 30 SF (2' x 15') of roadway shoulder
- Remove and repaint 68 SF of crosswalk markings
- Shift bottom of ramp 6 LF North of existing crosswalk
- Regrade 75 SF of HMA Sidewalk
- Install 15 LF of HMA curb
- Reconstruct 15 LF of HMA curb located at back of sidewalk
- Install 8 SF (2~4 SF) of detectible warning field (DWF) plates across entire width of ramp opening

Latitude 43.241658

Longitude -70.596794

Reference 801(22)

## **OGQ ADA#21**

### **CR02690**

Eliminate crosswalk across Shore Road at corner of Shore Road and Ledge Road

- Remove 85 SF of crosswalk pavement markings

Latitude 43.241036

Longitude -70.596503

Reference N/A

## **OGQ ADA#22**

### **CR12439**

Reconstruct Pedestrian ramp on LT side of Shore Road crossing at Stearns Road

- Install 8 SF (2 4-SF plates) of detectible warning field (DWF)

Latitude 43.240544

Longitude -70.596367

Reference 801(27)

## **OGQ ADA#23**

### **CR02689**

Reconstruct Pedestrian ramp on RT side of Shore Road crossing at Stearns Road

- Reconstruct similar to Standard Detail 801 (22)
- Regrade 110 SF of HMA Sidewalk
- Remove and repave 44 SF (2' x 22') of roadway shoulder
- Extend ramp 6.5 LF south to crosswalk
- Install 16 LF of HMA curb
- Install 12 SF (3~4 SF) of detectible warning field (DWF) plates across entire width of ramp opening

Latitude 43.240611

Longitude -70.596239

Reference 801(20)

## **OGQ ADA#24**

### **CR02688**

Reconstruct Pedestrian ramp on RT side of Shore Road crossing at Stearns Road

- Reconstruct similar to Standard Detail 801 (22)
- Regrade 70 SF of HMA Sidewalk
- Remove and repave 28 SF (2' x 14') of roadway shoulder
- Shift ramp 5 LF North
- Install 14 LF of HMA curb
- Reconstruct 8 LF of back HMA curb
- Install 8 SF (2~4 SF) of detectible warning field (DWF) plates across entire width of ramp opening

Latitude 43.240494

Longitude -70.596161

Reference 801(22)

## Ogunquit, Shore Road between Oarweed Road and Thompson Road



### OGQ\_ADA#25

#### **TBD**

Eliminate crosswalk on Shore Road crossing at 303 Shore Road

- Remove 55 SF of crosswalk pavement markings across Shore Road

Latitude 43.239583

Longitude -70.595047

Reference N/A

### OGQ\_ADA#26

#### **TBD**

Eliminate crosswalk on Shore Road crossing at Frazier Pasture Road

- Remove 55 SF of crosswalk pavement markings across Shore Road

Latitude 43.239361

Longitude -70.594411

Reference N/A



## **OGQ ADA#27**

### **TBD**

Reconstruct pedestrian ramp on LT side of Shore Road crossing at 339 Shore Road

- Reconstruct similar to Standard Detail 801(22)
- Install 8 SF (2~4 SF) detectible warning field (DWF) plates across entire width of ramp opening

Latitude 43.238628

Longitude -70.594106

Reference 801(22)

## **OGQ ADA#28**

### **TBD**

Reconstruct pedestrian ramp on RT side of Shore Road crossing at 339 Shore Road

- Reconstruct similar to Standard Detail 801 (22)
- Regrade 105 SF of HMA sidewalk
- Remove and repave 42 SF pavement at curb line
- Remove 88 SF of crosswalk marking
- Install 15 LF of HMA curb
- Extend ramp slightly to the North
- Existing granite curb at back of sidewalk to remain
- Install 12 SF (3~4 SF) detectible warning field (DWF) plates across entire width of ramp opening
- Technically infeasible as the ramp slope will exceed the maximum of 8.33%. Therefore, the maximum ramp length of 15' is utilized

Latitude 43.238686

Longitude -70.593989

Reference 801(22)

## Eliot, Route 103 between Post Office Drive and Dixon Road (North)



### ELT ADA#1

**CR147177**

Reconstruct pedestrian ramp on RT side of Route 103 crossing at Post Office Drive

- Reconstruct similar to Standard Detail 801(27)
- Regrade 75 SF of HMA sidewalk
- Remove and repave 30 SF (15' X 2') of roadway shoulder
- Construct 5 LF ramp opening
- Install 10 LF of HMA curb
- Install 8 SF (2~4 SF) detectible warning field (DWF) plates across entire width of ramp opening

Latitude 43.122669

Longitude -70.787686

Reference 801(27)

## **ELT ADA#2**

**TBD**

Construct pedestrian opening in existing curbed and paved esplanade on LT side of Route 103 crossing at Post Office Drive

- Regrade 15 SF of HMA sidewalk
- Construct 5 LF ramp opening
- Install 6 LF of HMA curb
- Install 8 SF (2~4 SF) detectible warning field (DWF) plates across entire width of ramp opening

Latitude 43.122600

Longitude -70.787794

## **ELT ADA#3**

**TBD**

Construct pedestrian ramp on RT side of Route 103 crossing at Baseball Dugout

- Construct similar to Standard Detail 801(14)
- Regrade 110 SF of HMA sidewalk
- Install 16 LF of HMA curb
- Remove and repave 44 SF (22' X 2') of roadway shoulder
- Remove 22 LF of HMA curb
- Construct 6 LF ramp opening
- Install 12 SF (3~4 SF) detectible warning field (DWF) plates across entire width of ramp opening

Latitude 43.123978

Longitude -70.789389

Reference 801(14)

## **ELT ADA#4**

**TBD**

Construct pedestrian ramp on LT side of Route 103 crossing at Baseball Dugout

- Construct similar to Standard Detail 801(14)
- Construct 25 SF (5' X 5') paved landing in grassed area
- Remove and repave 30 SF (15' X 2') shoulder pavement
- Construct 6 LF ramp opening
- Install 8 LF of HMA curb (2 4-LF tipdowns)
- Install 12 SF (3~4 SF) of detectible warning field (DWF) plates across entire width of ramp opening
- Grade, loam and seed 2' X 13' of disturbed area
- Grade, loam and seed 4' X 5' area at each tipdown

Latitude 43.123917

Longitude -70.789489

Reference 801(14)

## Eliot, Corner of Route 103 and Old Road



### ELT\_ADA#5

**CR09568**

Reconstruct pedestrian ramp on LT side of Route 103 crossing at Old Road

- Reconstruct similar to Standard Detail 801(14)
- Regrade 110 SF HMA sidewalk
- Remove and repave 44 SF (22' X 2') shoulder pavement
- Construct 5 LF ramp opening
- Install 17 LF of HMA curb
- Install 8 SF (2~4 SF) detectible warning field (DWF) plates across entire width of ramp opening
- Repaint 70 SF of crosswalk pavement markings

Latitude 43.127439

Longitude -70.796178

Reference 801(14)

### ELT\_ADA#6

**CR029569**

Reconstruct pedestrian ramp on RT side of Route 103 crossing at Old Road

- Reconstruct similar to Standard Detail 801(27)
- Remove and repave 30 SF (15' X 2') shoulder pavement
- Regrade 75 SF HMA sidewalk
- Install 15 LF of HMA curb
- Construct 5 LF ramp opening
- Install 8 SF (2~4 SF) detectible warning field (DWF) plates across entire width of ramp opening

Latitude 43.127469

Longitude -70.796036

Reference 801(27)