

ADA Ramp Report



Washington Street CR 05653

(44.53096, -67.884327)

Reconstruct Pedestrian Ramp

- Construct per Standard Detail 801(22),
- Regrade and pave approximately 20' by 4.5' existing sidewalk.
- Remove approximately 15' of existing bituminous curb.
- Place approximately 15' bituminous curb.
- Install 2' by 4' detectable warning field

Washington Street CR 05652

(44.530989, -67.884175)

- Construct per Standard Detail 801(22),
- Regrade and pave approximately 15' by 4.5' existing sidewalk.
- Remove approximately 15' of existing bituminous curb.
- Place approximately 10' bituminous curb.
- Install 2' by 4' detectable warning field

ADA Ramp Report



Crossing at Milbridge Commons Curb Ramp 3

(44.533185, -67.881882)

- Construct per Standard Detail 801(27).
- Remove approximately 13' and Reset 8' of existing granite curb, approximately 5' of existing curb will be removed.
- Construct Level Landing Area (Equipment Rental).
- Pave 5' by 5' Level Landing Area.
- Install 2' by 4.5' Detectable Warning Field.

Crossing at Milbridge Commons Curb Ramp 4

(44.533215, -67.882006)

- Construct per Standard Detail 801(27).
- Remove and Reset approximately 12' of existing granite curb.
- Regrade and Pave approximately 22' by 5' of existing sidewalk.
- Install 2' by 4.5' Detectable Warning Field.

ADA Ramp Report



Curb Ramp 41916

(44.534865, -67.880894)

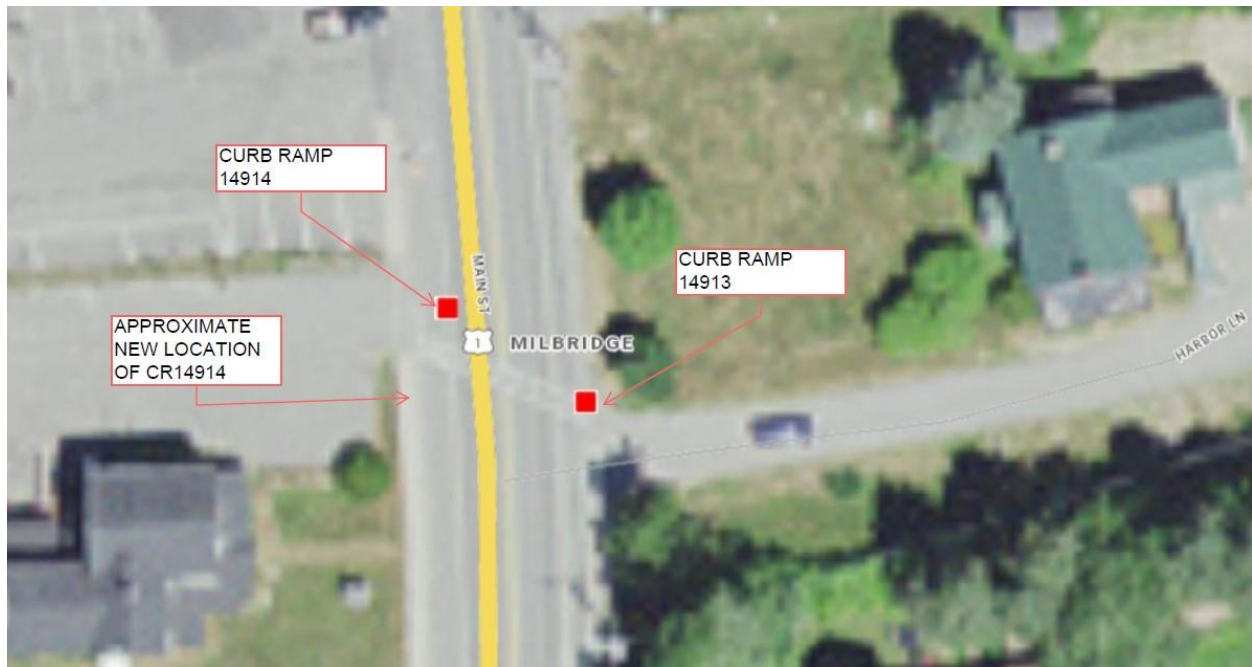
- Construct per Standard Detail 801(27).
- Remove approximately 11' and Reset 8' of existing granite curb, approximately 3' of existing curb will be removed.
- Construct Level Landing Area (Equipment Rental).
- Pave 5' by 5' Level Landing Area.
- Install 2' by 4.5' Detectable Warning Field.

Curb Ramp 41915

(44.534892, -67.88102)

- Construct per Standard Detail 801(27).
- Remove approximately 20' and Reset 18' of existing granite curb, approximately 2' of granite curb will be removed.
- Regrade and Pave approximately 25' by 5' of existing sidewalk.
- Install 2' by 4.5' Detectable Warning Field.

ADA Ramp Report



Curb Ramp 14913 (Harbor Lane)

(44.53597, -67.880666)

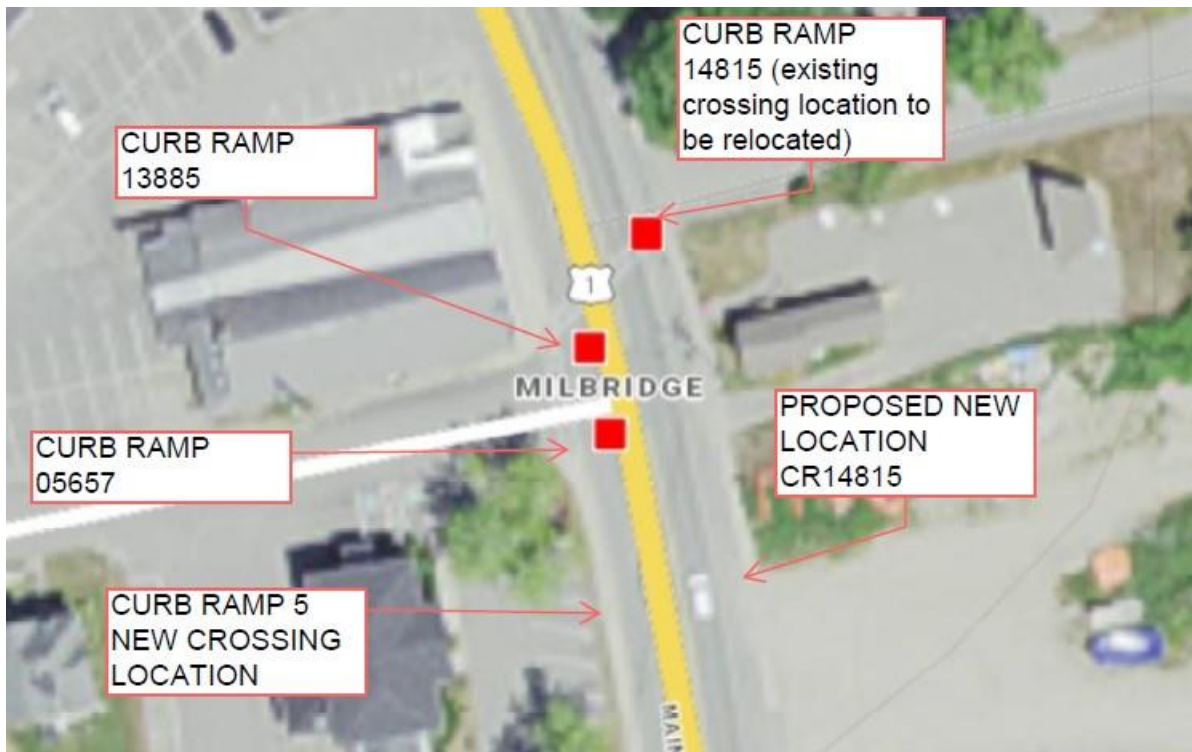
- Construct per Standard Detail 801(27).
- Remove approximately 12' and Reset 8' of granite curb, approximately 4' of existing curb will be removed.
- Construct Level Landing Area (Equipment Rental).
- Pave 5' by 5' Level Landing Area.
- Install 2' by 4.5' Detectable Warning Field.

Curb Ramp 14911

(44.535968, -67.880837)

- Construct per Standard Detail 801(27), parallel curb ramp, mid-block crossing
- Remove approximately 23' and Reset 16' of granite curb, approximately 7' of curb will be removed.
- Remove approximately 23' by 5' of Reinforced Concrete Sidewalk.
- Construct approximately 15' by 5' of Reinforced Concrete Sidewalk.
- Install 2' by 4.5' Detectable Warning Field.

ADA Ramp Report



Curb Ramp 14915 (new location)

(44.537036, -67.880856)

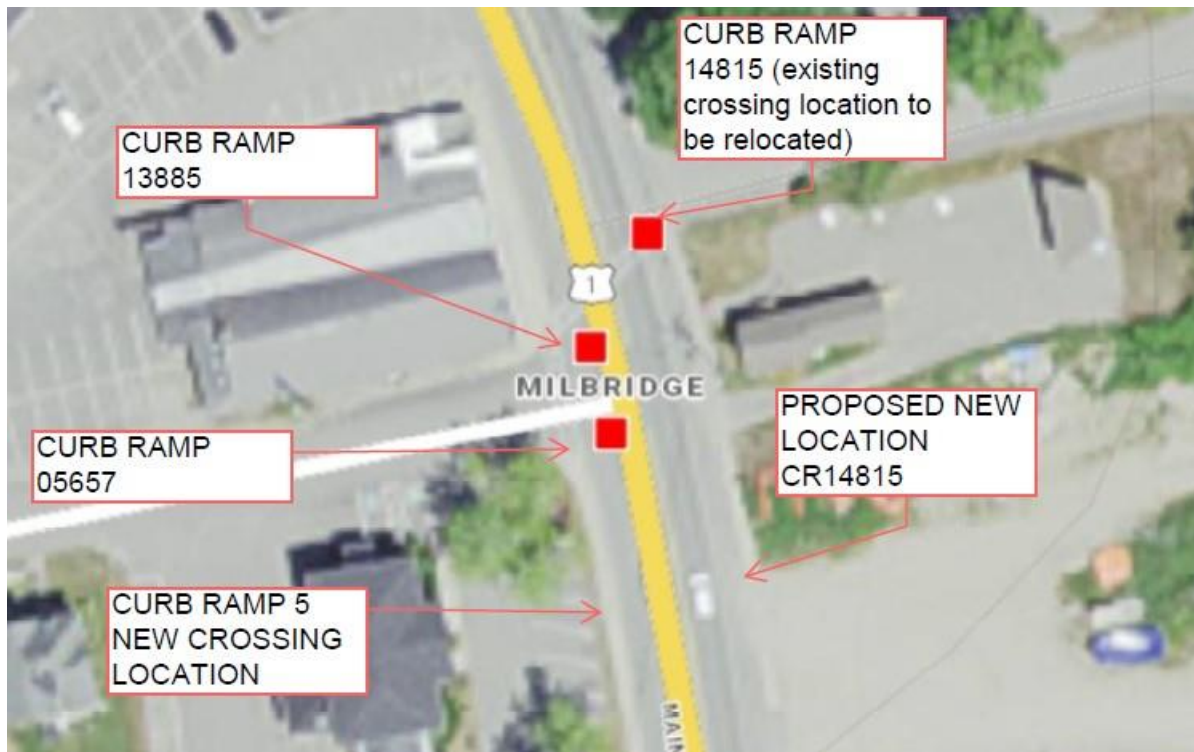
- Construct per Standard Detail 801(27)
- Remove approximately 22' and reset 17' of granite curb, approximately 5' of existing curb will be removed.
- Remove approximately 22' by 5' of existing Reinforced Concrete Sidewalk.
- Construct approximately 20' of Reinforced Concrete Sidewalk.
- Install 2' by 4.5' Detectable Warning Field.

Curb Ramp 5 (new location)

(44.537028, -67.881023)

- Construct per Standard Detail 801(20), parallel curb ramp, mid-block crossing.
- Remove approximately 30' and reset 25' of granite curb, approximately 5' of existing curb will be removed at proposed level landing.
- Remove approximately 30' by 5' of existing Reinforced Concrete Sidewalk.
- Construct approximately 30' by 5' of Reinforced Concrete Sidewalk.
- Install approximately 16' of Vertical Curb, Type 1 as back curb behind the proposed level landing area.
- Install 2' by 4.5' Detectable Warning Field.

ADA Ramp Report



Curb Ramp 13885

(44.537251, -67.881090)

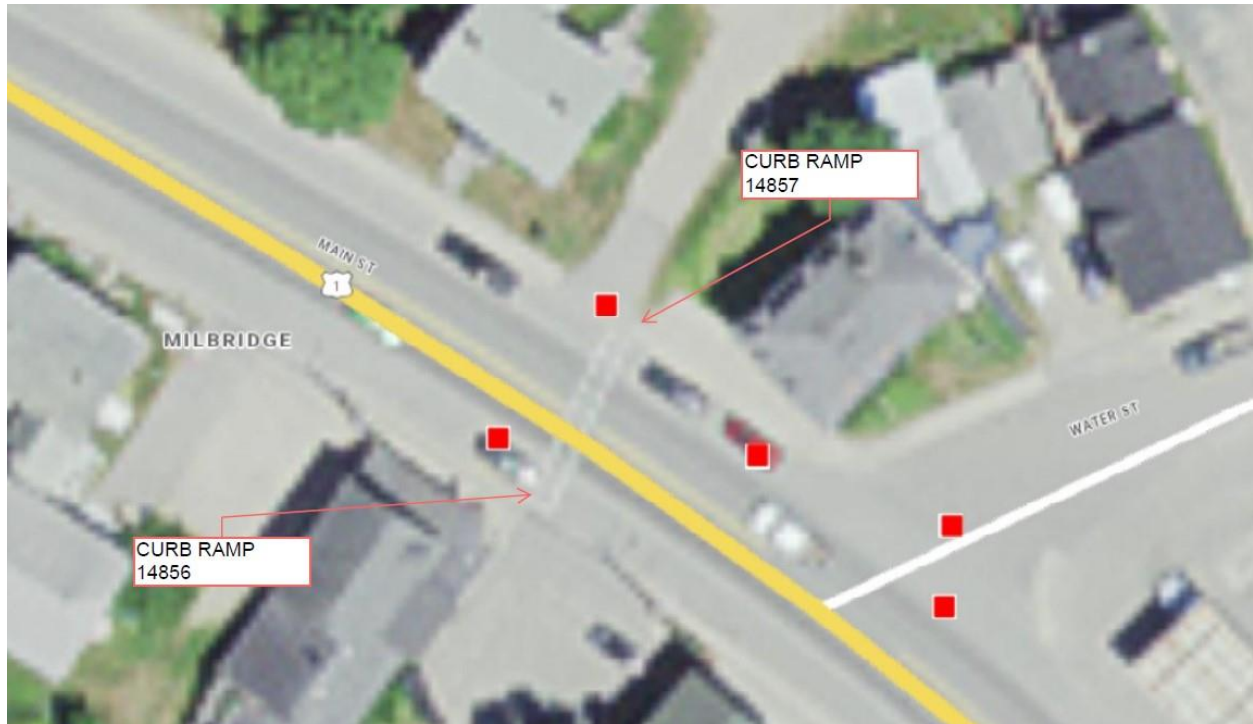
- Construct per Standard Detail 801(20)
- Remove approximately 26' and Reset 20' of existing granite curb, approximately 5' of curb will be removed at the level landing area.
- Remove approximately 26' by 5' of Reinforced Concrete Sidewalk.
- Construct approximately 26' by 5' of Reinforced Concrete Sidewalk.
- Install 2' by 2.4' Detectable Warning Field.

Curb Ramp 05657

(44.537136, -67.881053)

- Construct per Standard Detail 801(20)
- Remove approximately 26' and Reset 16' of existing granite curb, approximately 5' of curb will be removed at the level landing area.
- Remove approximately 26' by 5' of Reinforced Concrete Sidewalk.
- Construct approximately 26' by 5' of Reinforced Concrete Sidewalk.
- Install 2' by 2.4' Detectable Warning Field.

ADA Ramp Report



Curb Ramp 14857

(44.538157, -67.881841)

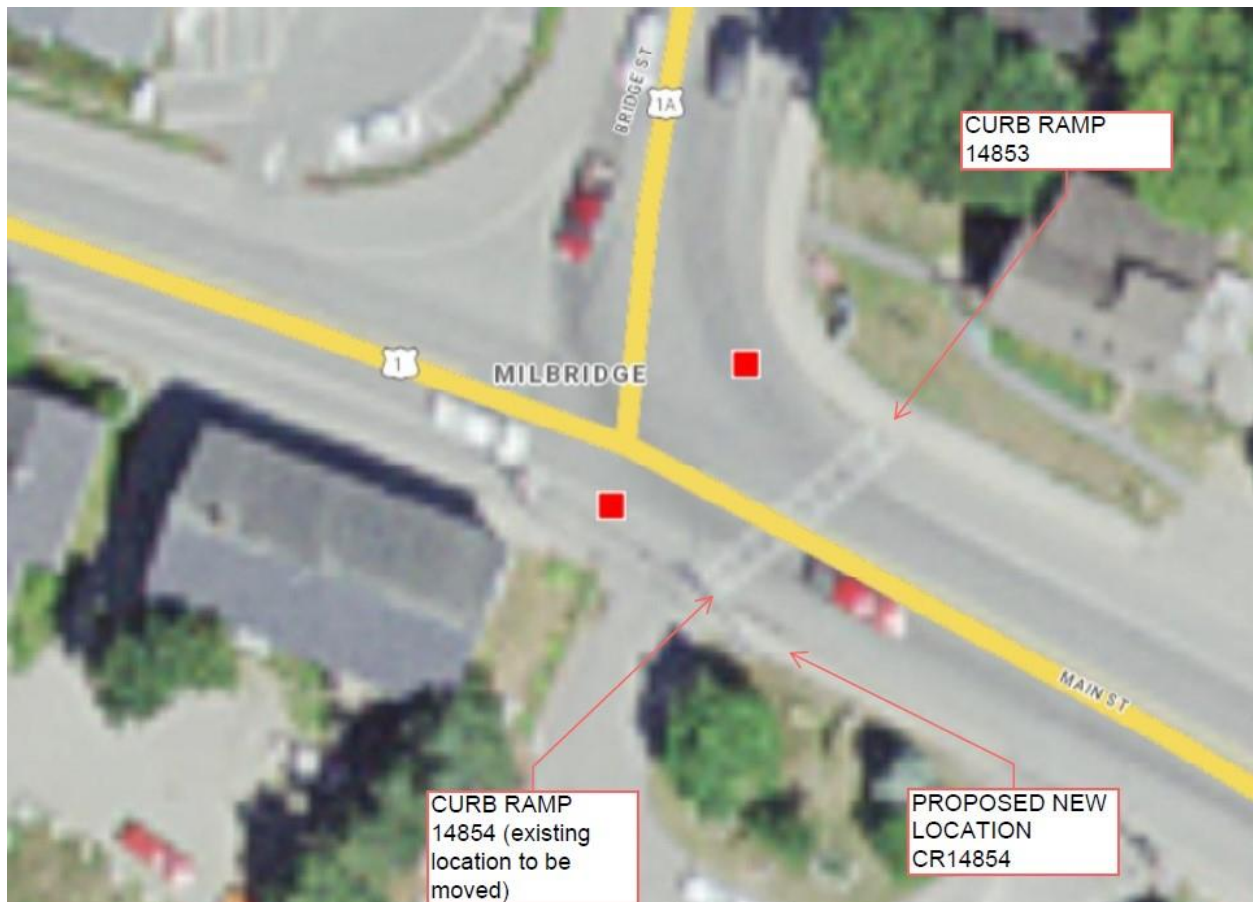
- Construct as per Standard Detail 801(27)
- Remove approximately 15' and Reset 10' of granite curb, approximately 5' of existing curb will be removed.
- Remove approximately 17' by 10' of existing Reinforced Concrete Sidewalk.
- Construct approximately 15' by 10' of Reinforced Concrete Sidewalk.
- Install 2' by 4.5' Detectable Warning Field.

Curb Ramp 14856

(44.538057, -67.881937)

- Construct as per Standard Detail 801(27)
- Remove approximately 15' and Reset 10' of granite curb, approximately 5' of existing curb will be removed.
- Remove approximately 15' by 10' of existing Reinforced Concrete Sidewalk.
- Construct approximately 15' by 10' of Reinforced Concrete Sidewalk.
- Install 2' by 4.5' Detectable Warning Field.

ADA Ramp Report



Curb Ramp 14853

(44.538471, -67.882579)

- Construct per Standard Detail 801(20), parallel curb ramp.
- Remove and reset approximately 14' existing granite curb.
- Remove approximately 20' by 5' of existing Reinforced Concrete Sidewalk.
- Construct approximately 20' by 5' of Reinforced Concrete Sidewalk.
- Install 2' by 4.5' Detectable Warning Field.

Curb Ramp 14854 (new location)

(44.538365, -67.882658)

- Construct per Standard Detail 801(20), parallel curb ramp, mid-block crossing.
- Remove approximately 29' and Reset 24' existing granite curb, approximately 5' of existing curb will be removed at new landing area.
- Remove approximately 30' of existing Reinforced Concrete Sidewalk.
- Construct approximately 30' of Reinforced Concrete Sidewalk.
- Install 2' by 4.5' Detectable Warning Field.