

TOWN OF
AGUGUSTA
BOND BROOK BRIDGE
OVER
BOND BROOK

SPECIFICATIONS

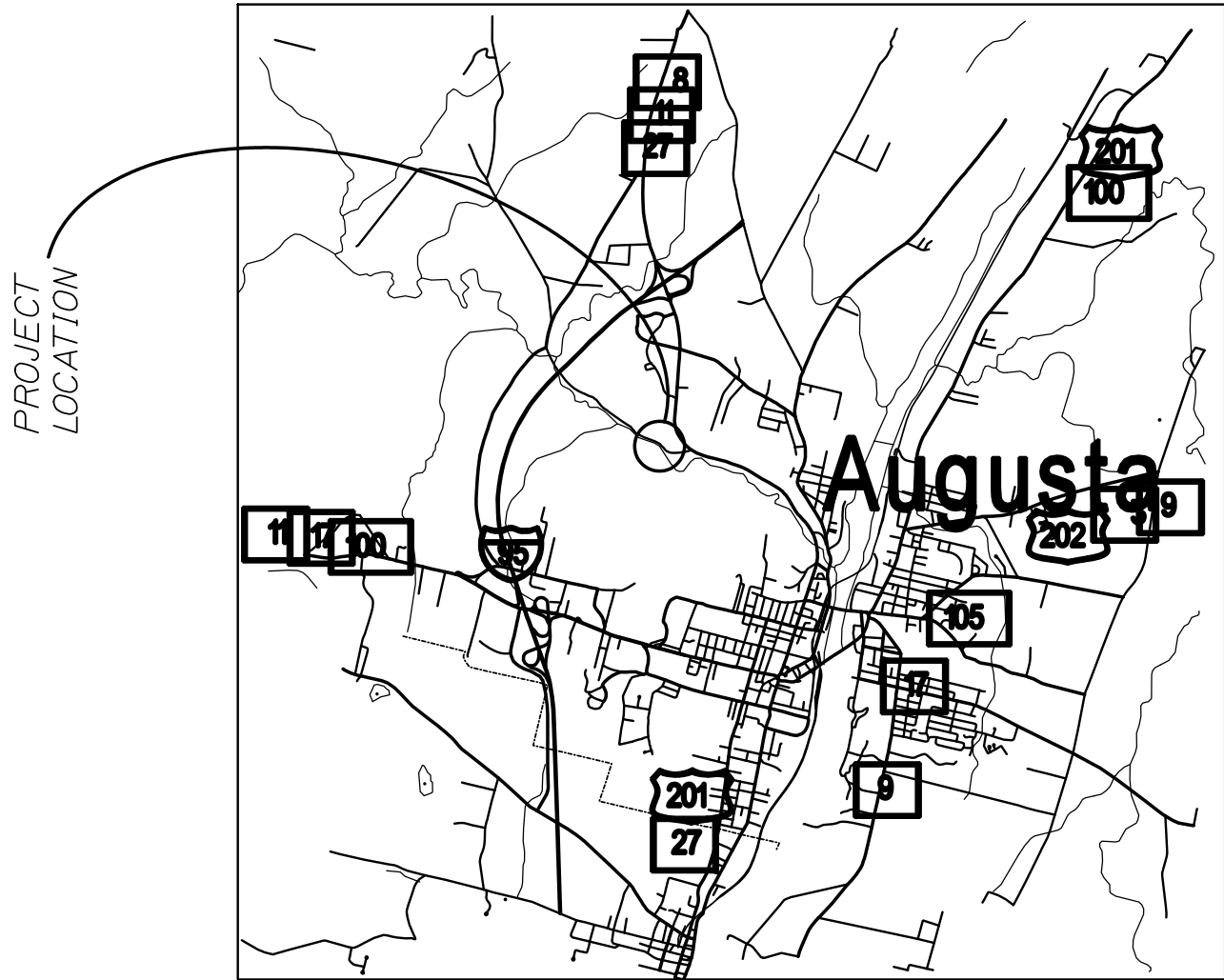
DESIGN: AASHTO LRFD Bridge Design Specifications, Second Edition 1998 and Interim Specifications through 2002.

RATING: AASHTO Manual for Condition Evaluation of Bridges, Second Edition 1994 and Interim Specifications through 2000.

LOAD RATING

Inventory 18 TON

Operating 27.5 TON



LIST OF DRAWINGS

Title Sheet	1
Framing Plan	2
Profile/Section View	3

1

OF 3

SHEET NUMBER

BOND BROOK BRIDGE

TITLE SHEET

DATE

AUG 09

BY

OKK
ETC

DESIGN/DETAIL/

CHECKED/REVIEWED

REVISIONS 1

REVISIONS 2

REVISIONS 3

REVISIONS 4

FIELD CHANGES

DATE

AUG 2009

P.E. NUMBER

PREPARED FOR:

TOWN OF AUGUSTA

222 RIVER RD, RICHMOND, ME 04357 PH/FX (207)737-2009/(207) 737-2007

STRUCTURAL ENGINEERING • DETAILING SERVICES

CALDERWOOD ENGINEERING, ETC.

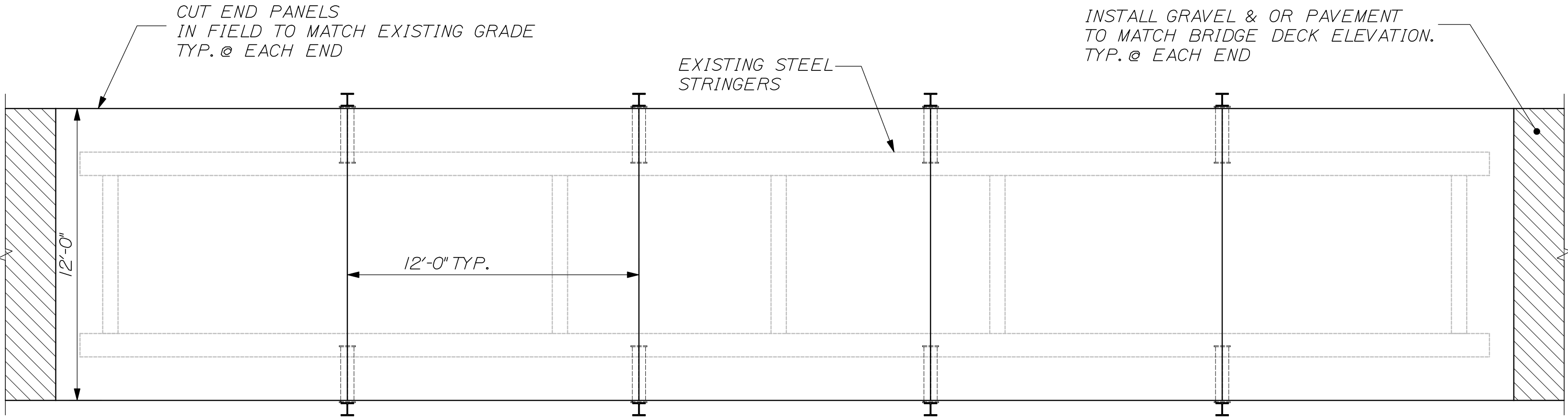
Professional Engineer

ERIC J. CALDERWOOD

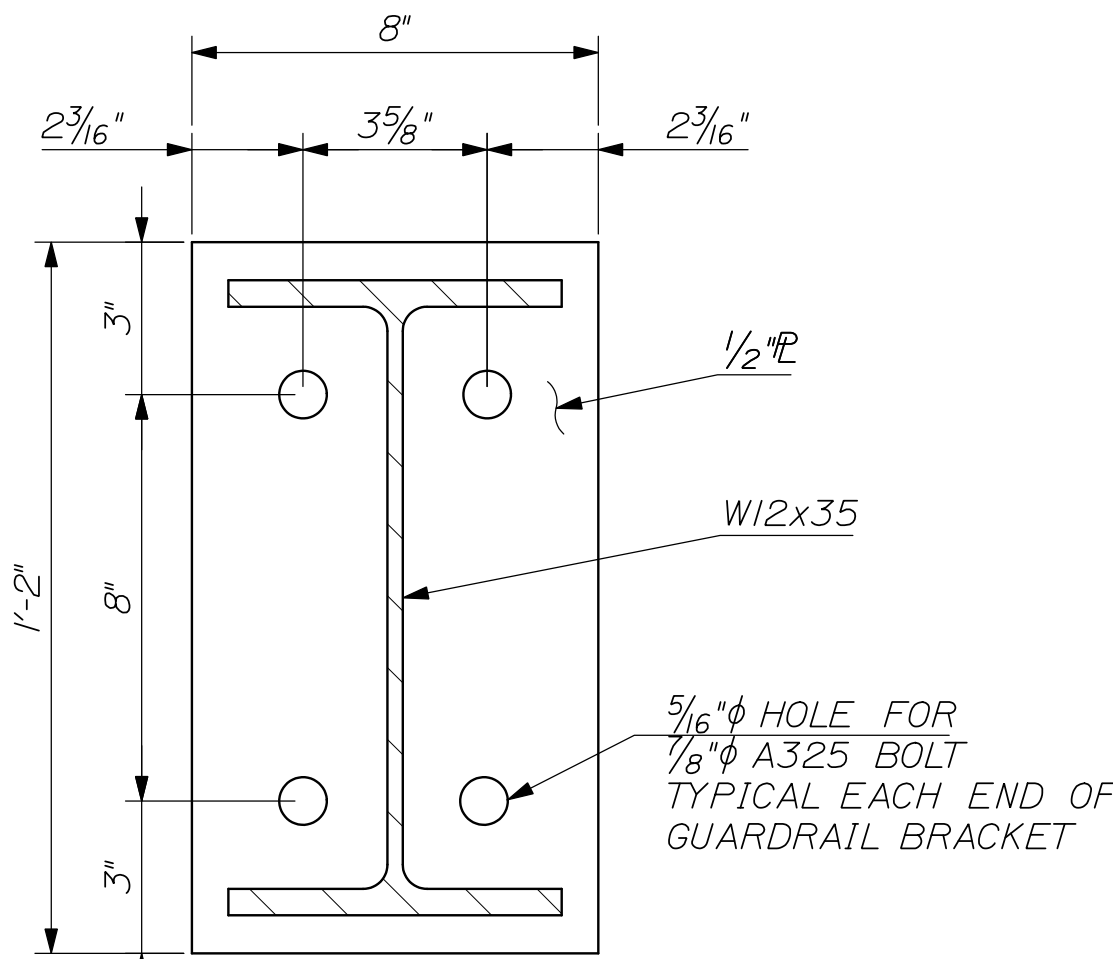
No. 9099

STA 10+00

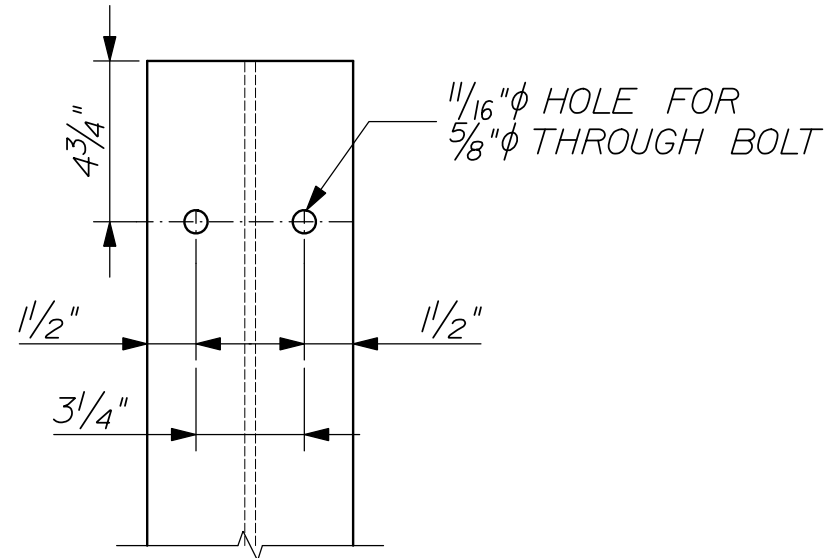
STA 10+00



B
2
FRAMING PLAN
1"=4'-0"

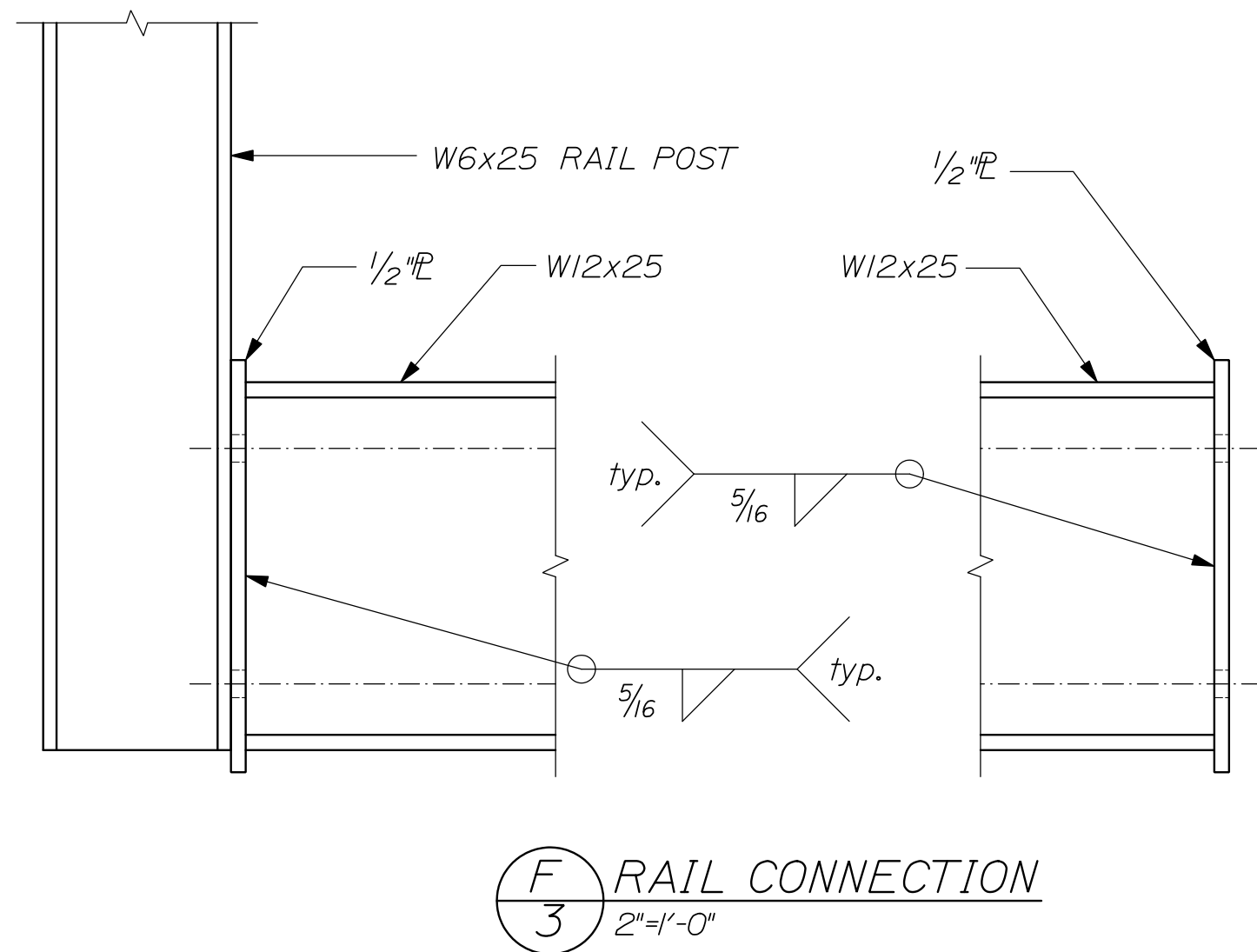
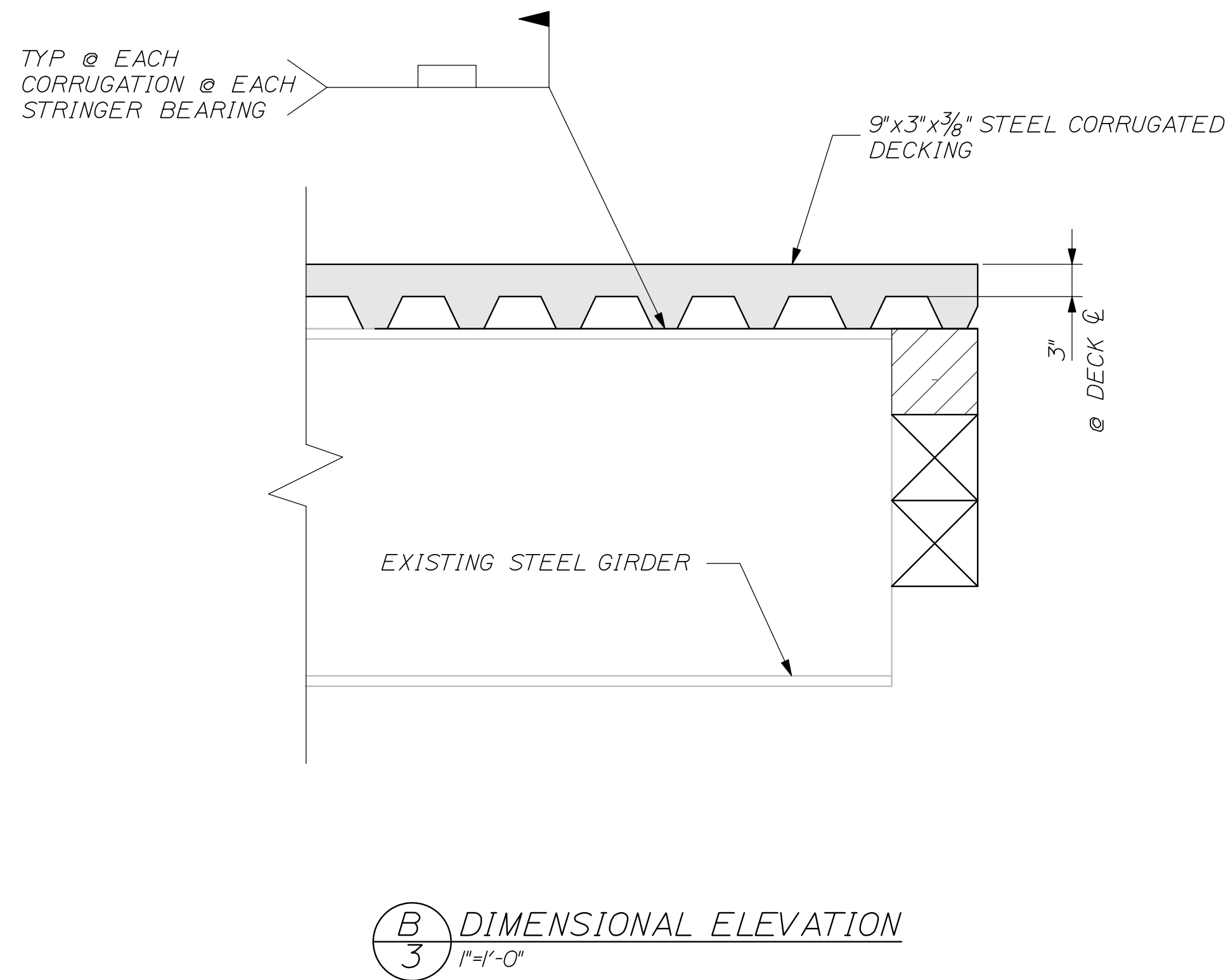
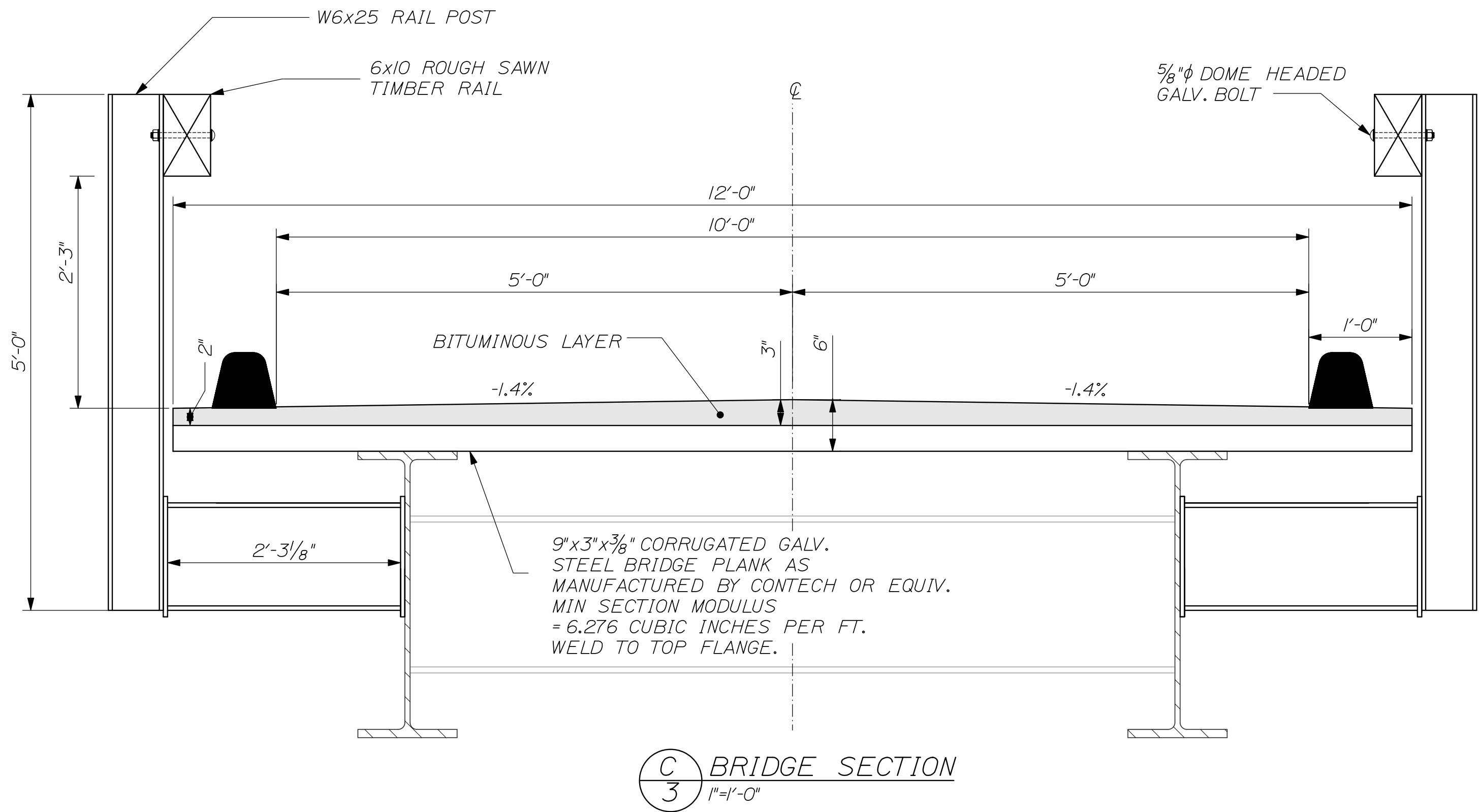
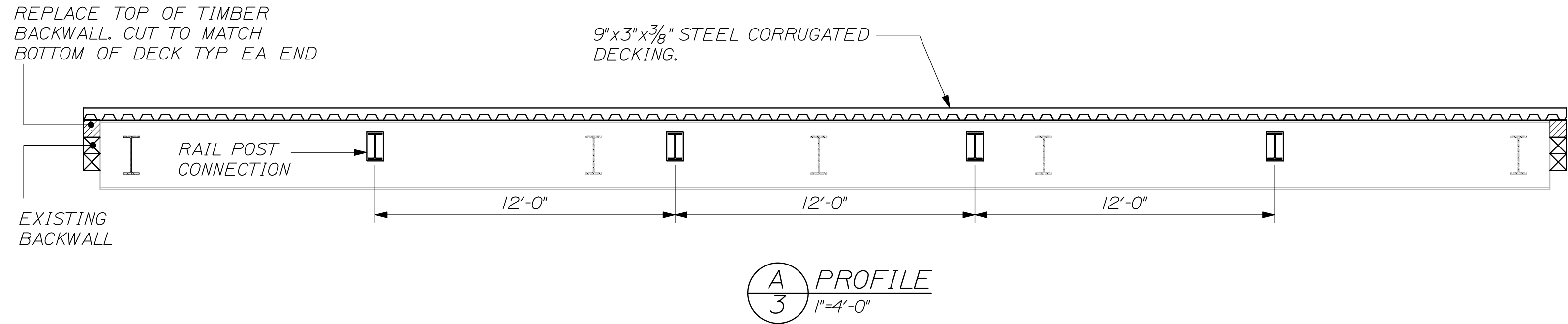


C
2
RAIL DETAIL
3"=1'-0"



D
2
W6x25 RAIL POST
2"=1'-0"

CALDERWOOD ENGINEERING, ETC. STRUCTURAL ENGINEERING • DETAILING SERVICES 222 RIVER RD, RICHMOND, ME 04357 PH/FX (207)737-2009/(207) 737-2007 PREPARED FOR: CITY OF AUGUSTA BOND BROOK BRIDGE	 P.E. NUMBER DATE AUG 2009	DESIGN/DETAIL	BY	DATE
		CHECKED/REVIEWED	OK ETC	AUG 09 AUG 09
BOND BROOK BRIDGE PLAN SHEET	REVISIONS 1			
	REVISIONS 2			
SHEET NUMBER 2 OF 3	REVISIONS 3			
	REVISIONS 4			
FIELD CHANGES				



CALDERWOOD ENGINEERING, ETC. STRUCTURAL ENGINEERING • DETAILING SERVICES 222 RIVER RD, RICHMOND, ME 04357 PH/FX (207)737-2009/(207) 737-2007 PREPARED FOR: CITY OF AUGUSTA		BOND BROOK BRIDGE	
P.E. NUMBER AUG 2009		DATE AUG 2009	
DESIGN/DETAIL CHECKED/REVIEWED	BY OK ETC	DATE AUG 09 AUG 09	
REVISIONS 1 REVISIONS 2 REVISIONS 3 REVISIONS 4 FIELD CHANGES			
BOND BROOK BRIDGE		BRIDGE SECTION/PROFILE	
SHEET NUMBER 3 OF 3			