

Maine Statewide Traffic Signals ATCMTD Project 025321.00

TS-1 M-Type Control Cabinet Replacement Plan



PREPARED BY



16 State House Station
Augusta, ME 04333
207.624.3612

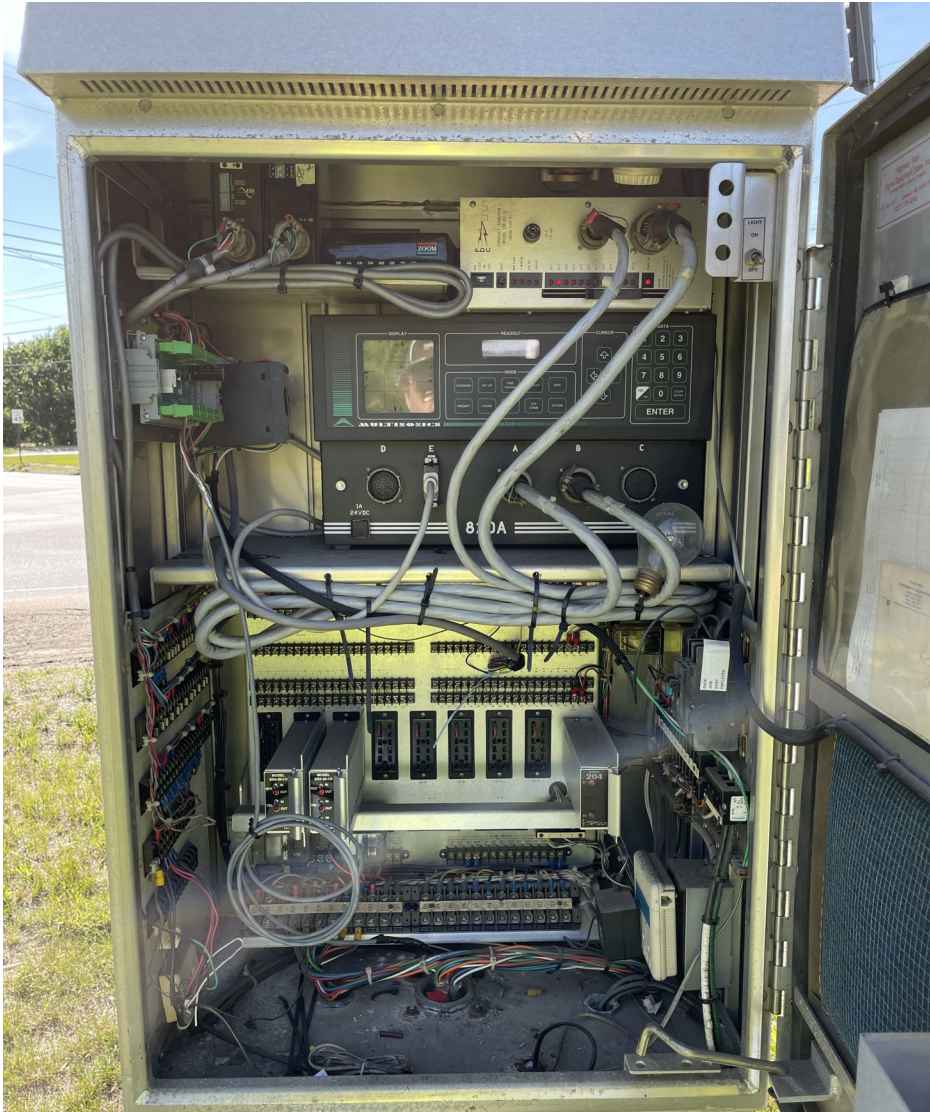


157 Capitol Street
Augusta, ME 04330
207.889.3150

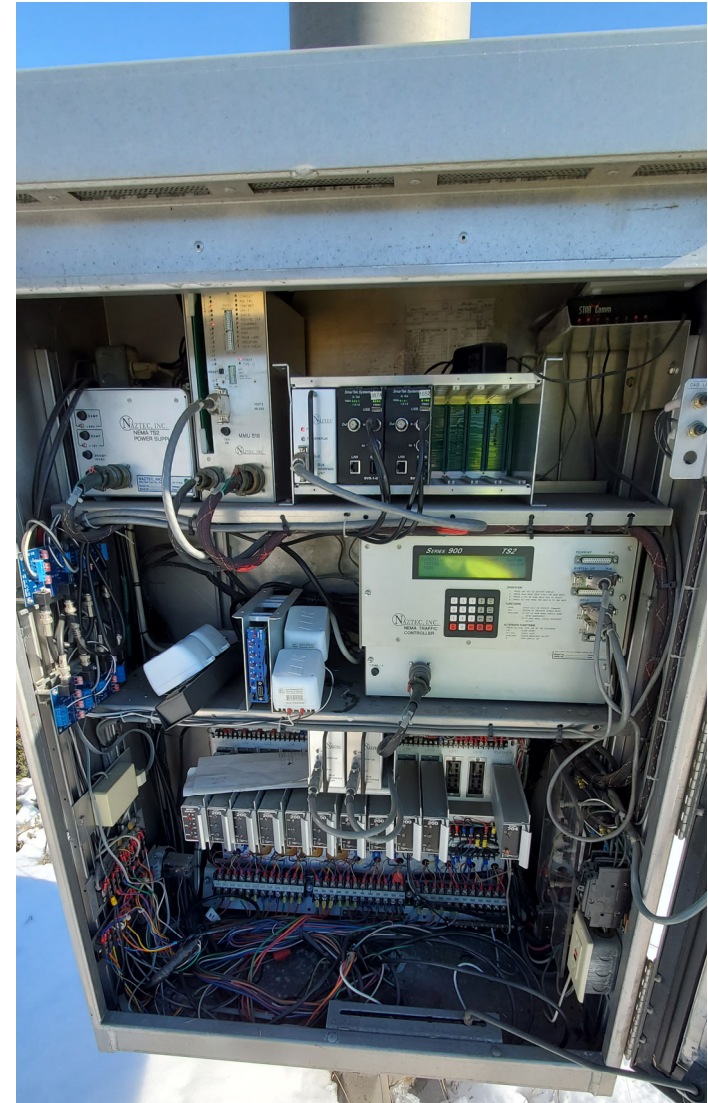
MAY 2023

(Revised Version 3.0)

Buxton
Long Plains Road at Narragansett Trail

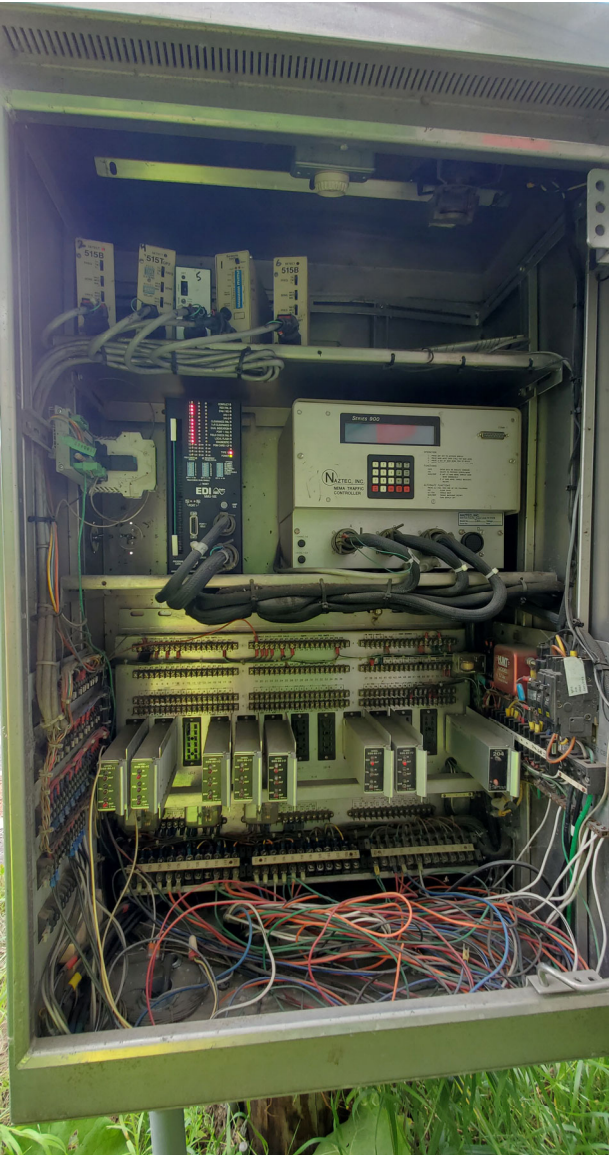


**Existing 025321.00 Pole Mounted "M"-Type TS-1
Intersection Control Cabinet**

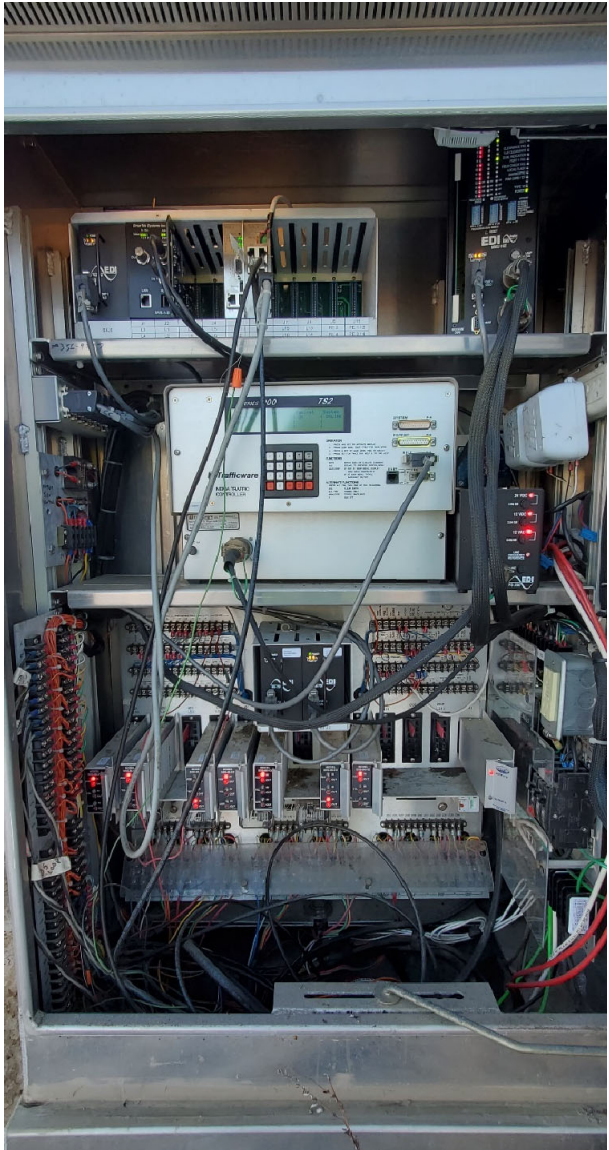


**Proposed 024301.00 Salvaged Pole Mount "M"-Type TS-2
Intersection Control Cabinet ("54" Bridge/Maine Gardiner)**
Anticipated Available in mid-2024

Caribou
Presque Isle Road and Van Buren Road at Fort Street



**Existing 025321.00 Pole Mounted "M"-Type TS-1
Intersection Control Cabinet**

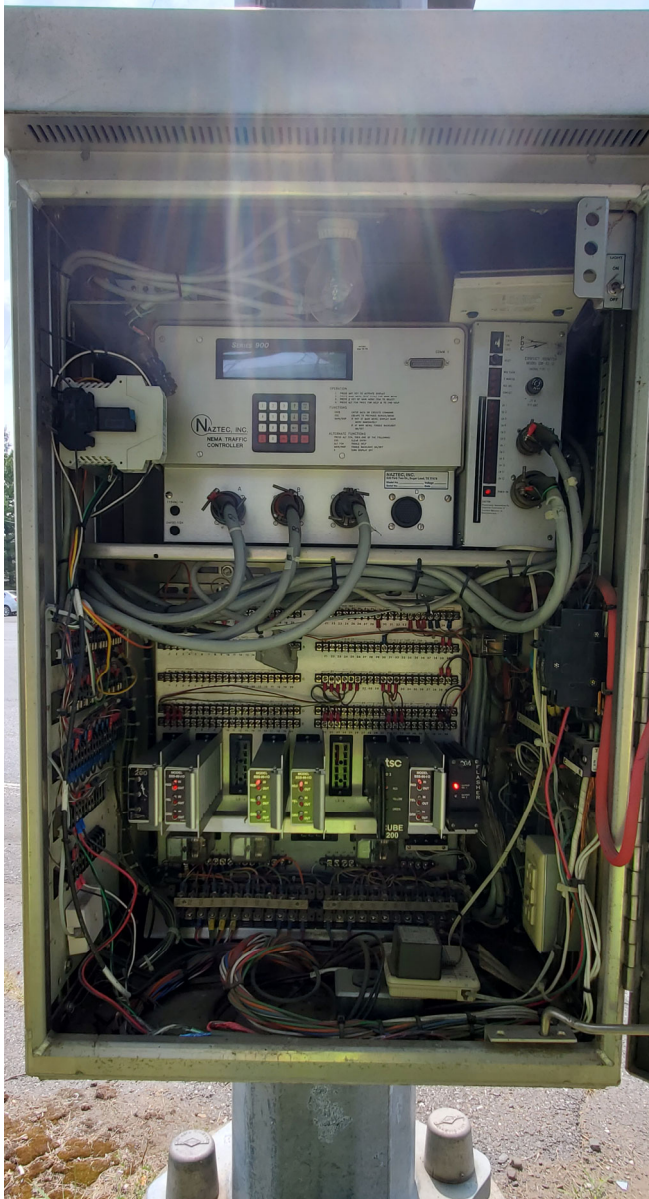


**Proposed 024301.00 Salvaged Base Mount "M"-Type TS-2
Intersection Control Cabinet ("44" US1 at SR52 Belfast)**

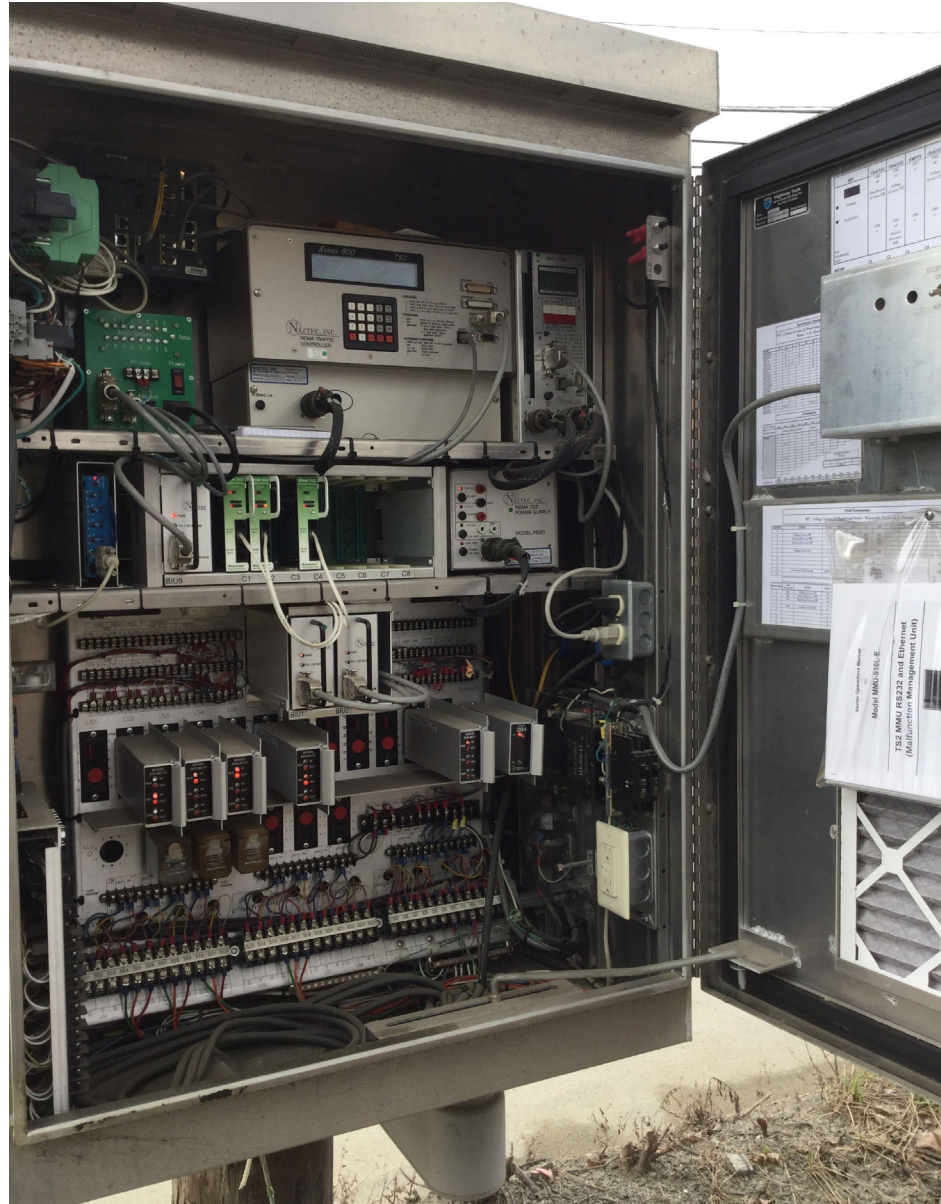
Note: Needs New Bottom and Welded

Anticipated Available in mid-2024

Fort Fairfield
Presque Isle Road and Limestone Road at High Street and Main Street

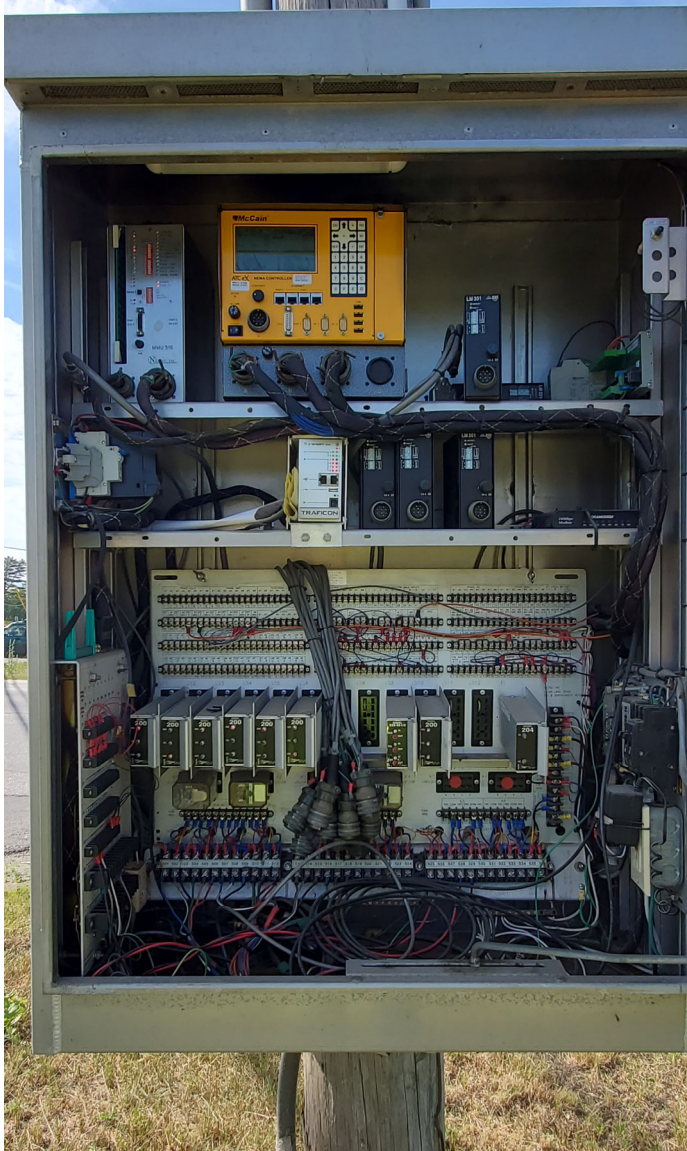


**Existing 025321.00 Pole Mounted "M"-Type TS-1
Intersection Control Cabinet**

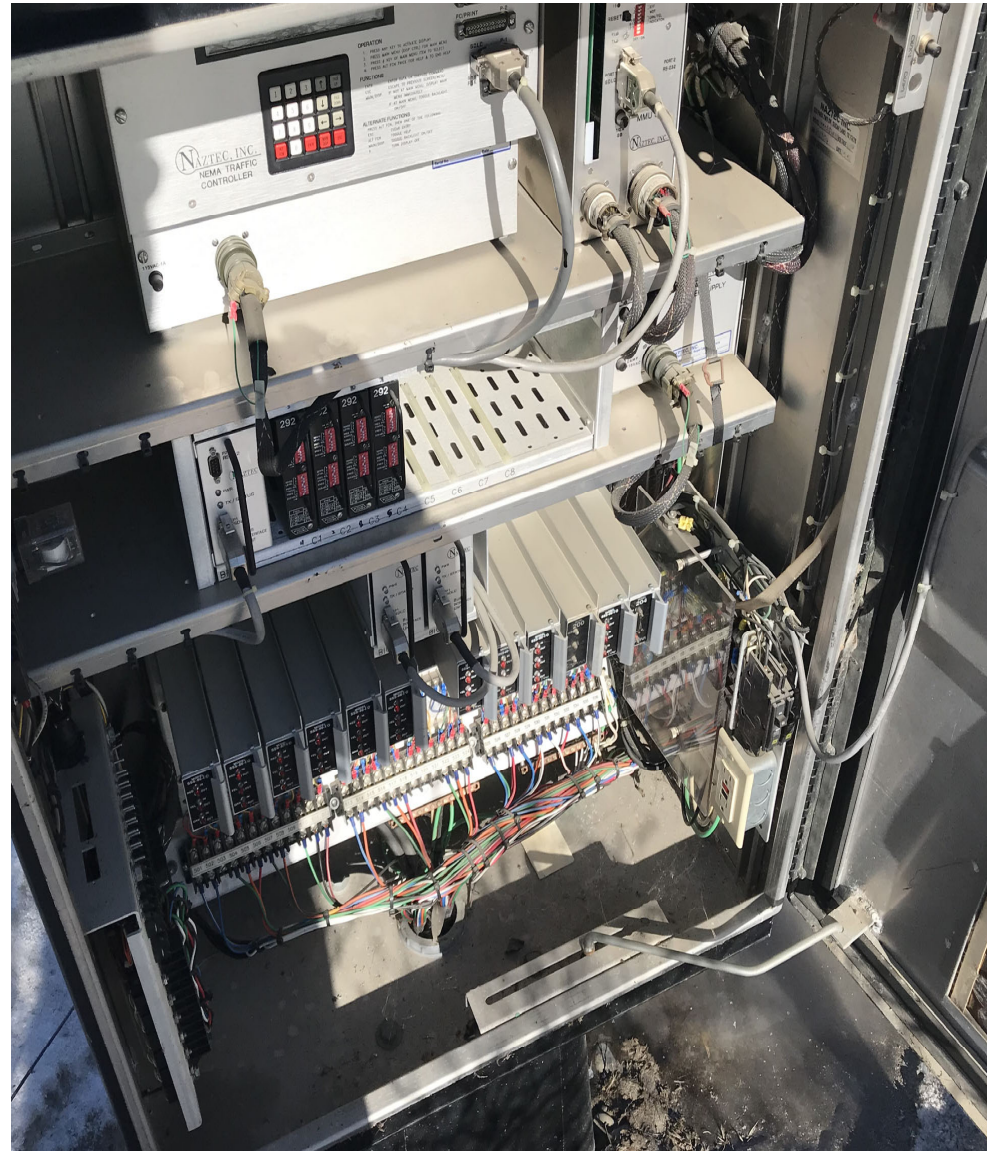


**Proposed 024301.00 Salvaged Pole Mount "M"-Type TS-2
Intersection Control Cabinet ("97" College/Hazelwood Waterville)**
Anticipated Available in mid-2023

**Hampden
Route 202 at Colebrook Road**

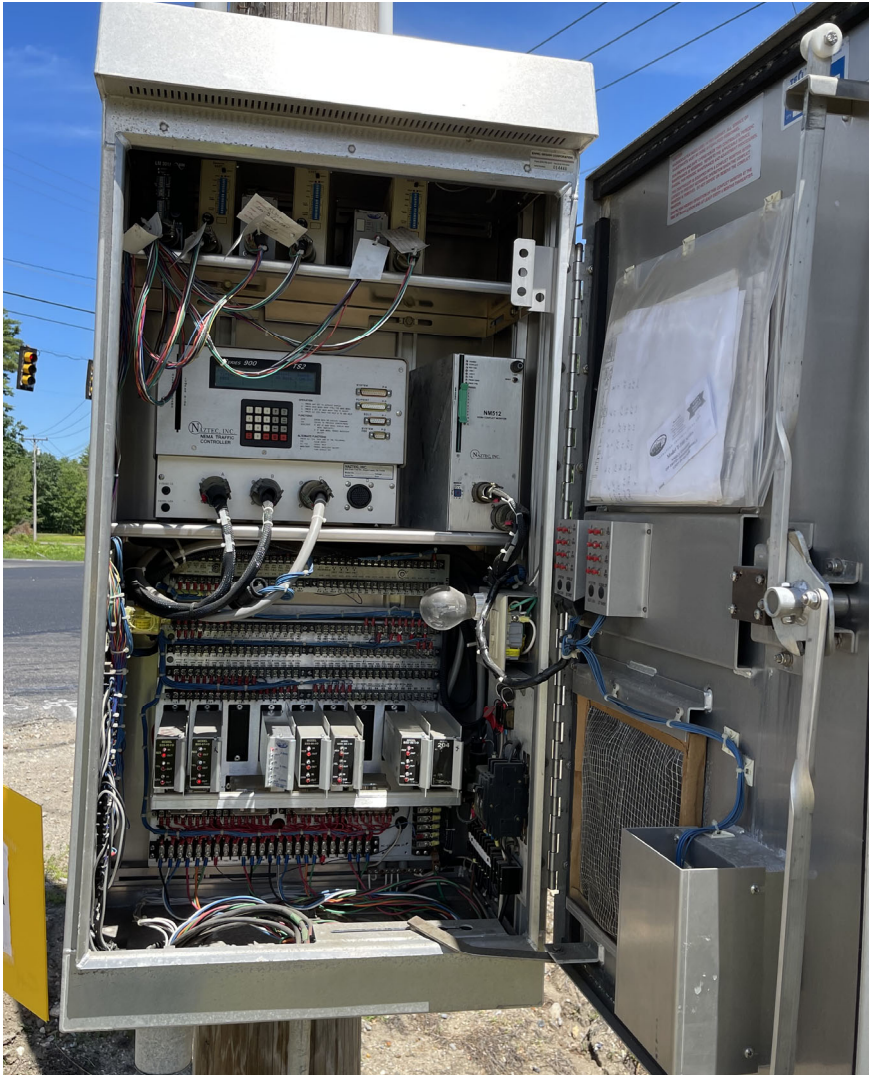


**Existing 025321.00 Pole Mounted "M"-Type TS-1
Intersection Control Cabinet**

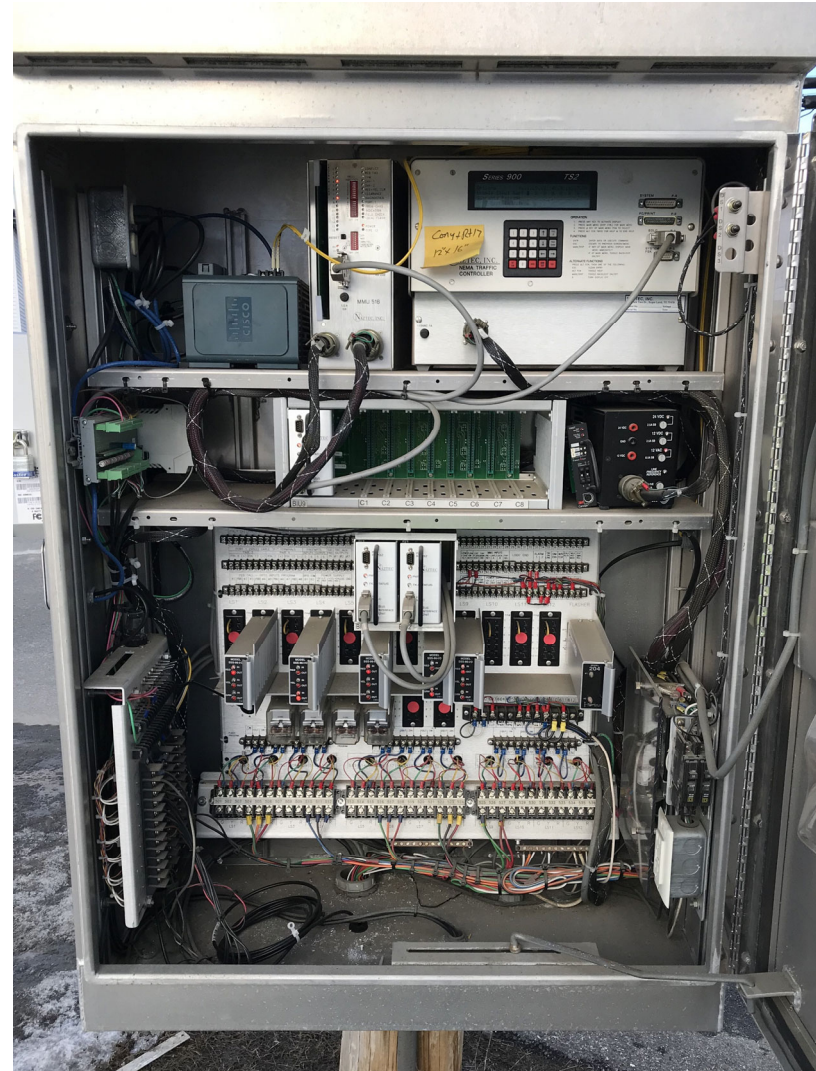


**Proposed 024301.00 Salvaged T-Base (Black) "M"-Type TS-2
Intersection Control Cabinet ("46" Main/Bridge Fairfield)
Anticipated Available in mid-2024**

Lebanon
Carl Broggi Highway at West Lebanon Road and Hubbard Road



**Existing 025321.00 Pole Mounted "Stretch M"-Type TS-1
Intersection Control Cabinet**

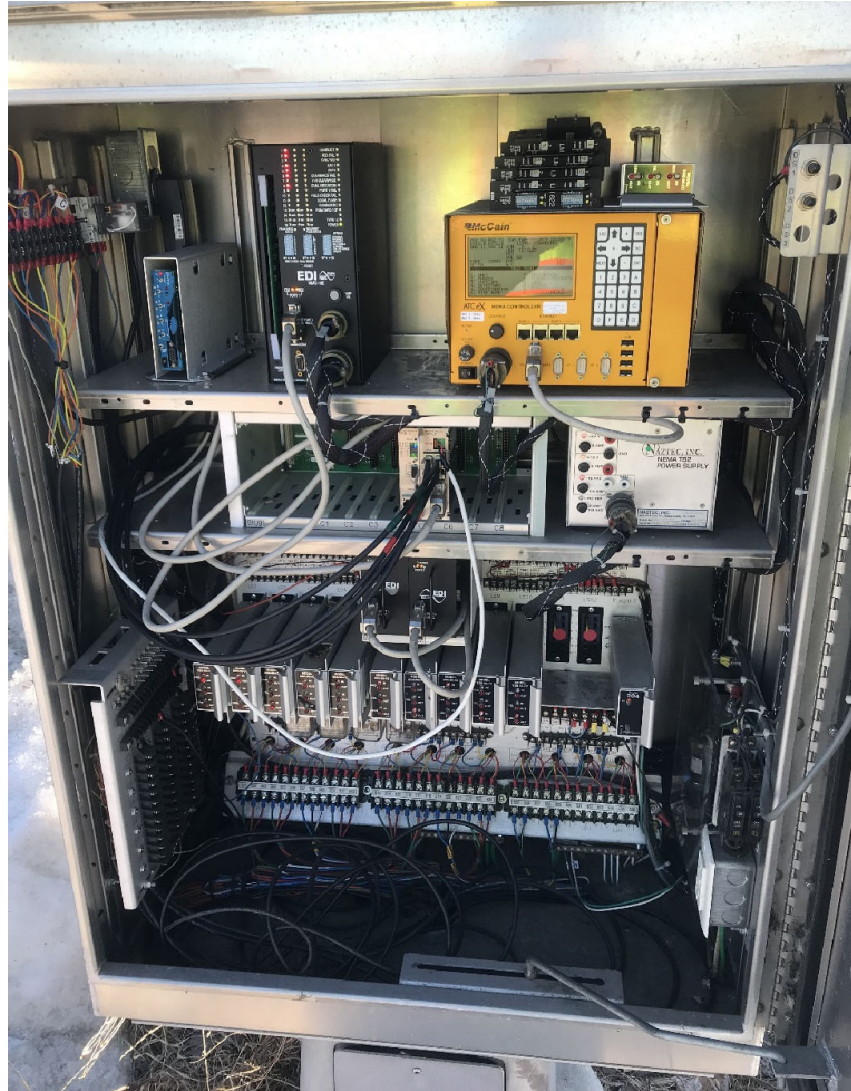


**Proposed 024301.00 Salvaged T-Base "M"-Type TS-2
Intersection Control Cabinet ("9" Eastern/Cony Augusta)
Presently Available in MaineDOT Conex Box**

Lyman
Alfred Road at Goodwins Mills Road and Alewife Road

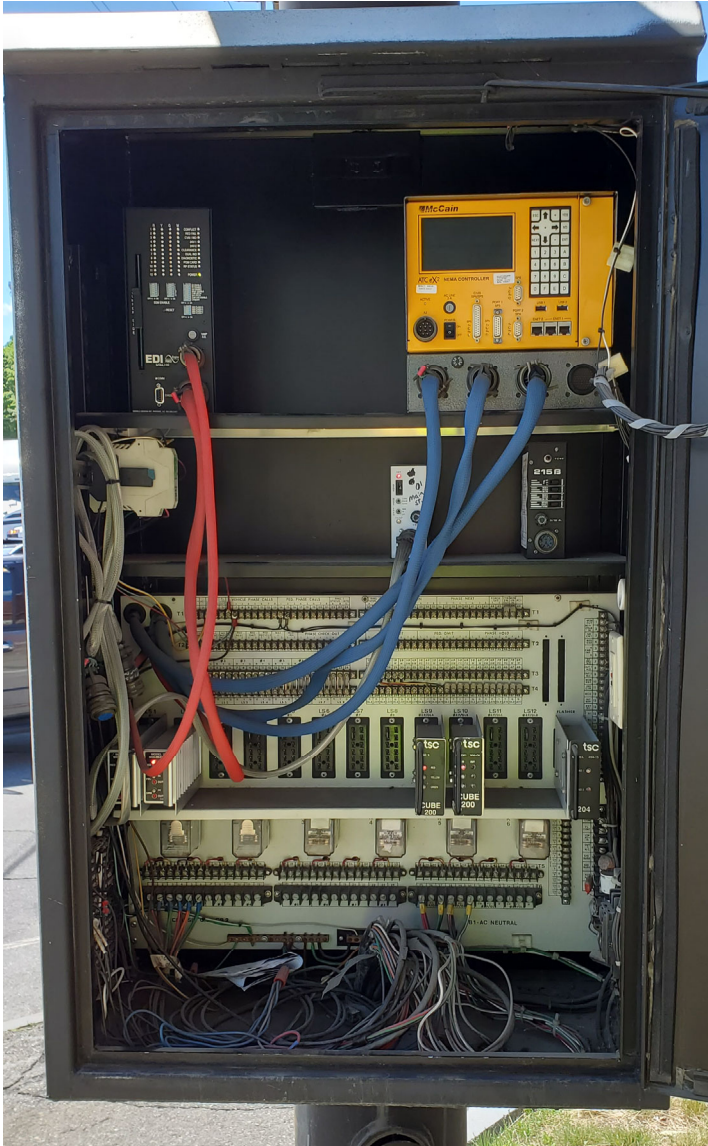


**Existing 025321.00 Pole Mounted "Stretch M"-Type TS-1
Intersection Control Cabinet**

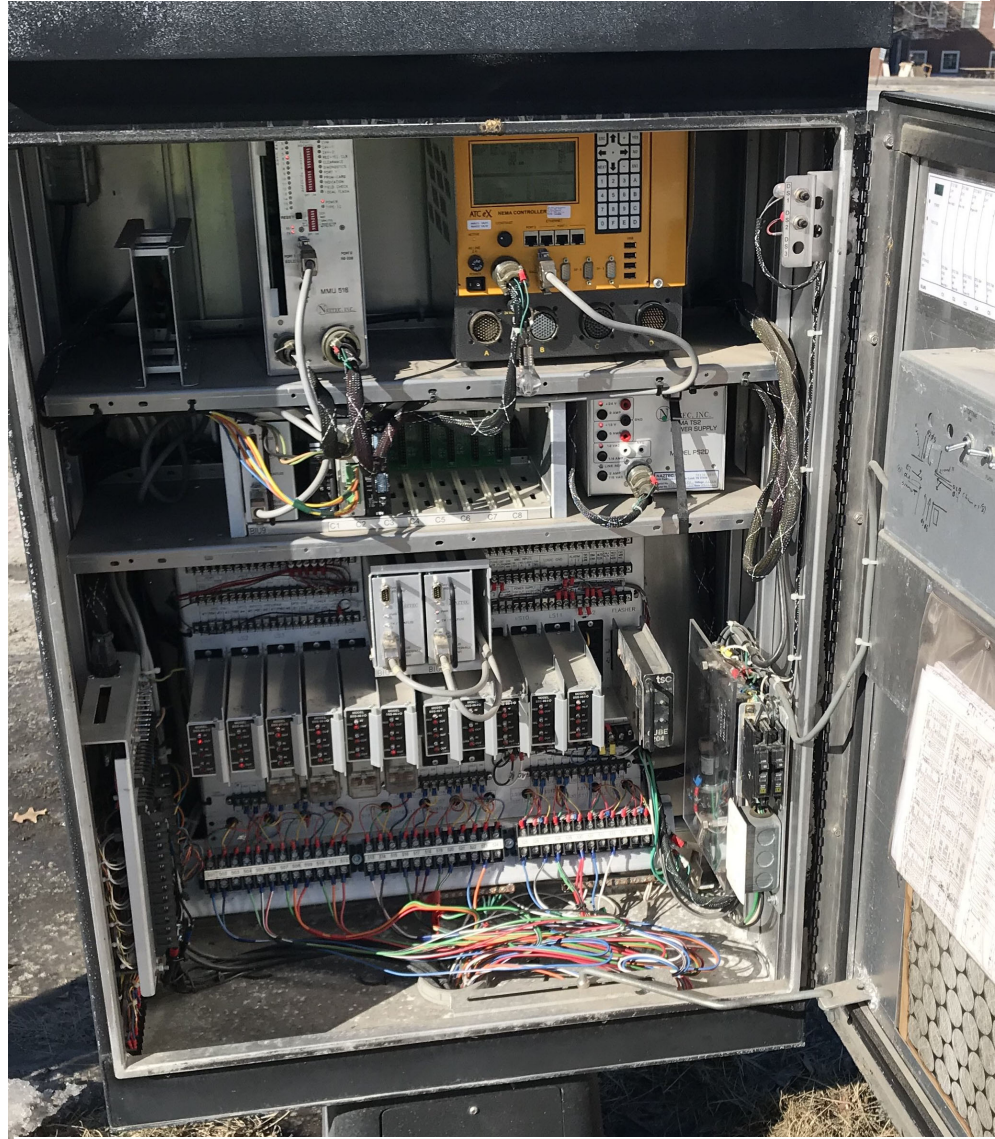


**Proposed 024301.00 Salvaged T-Base "M"-Type TS-2
Intersection Control Cabinet ("15" Route 3/Riverside Augusta)
Presently Available in MaineDOT Conex Box**

Madison
Main Street at Weston Avenue and Old Point Avenue



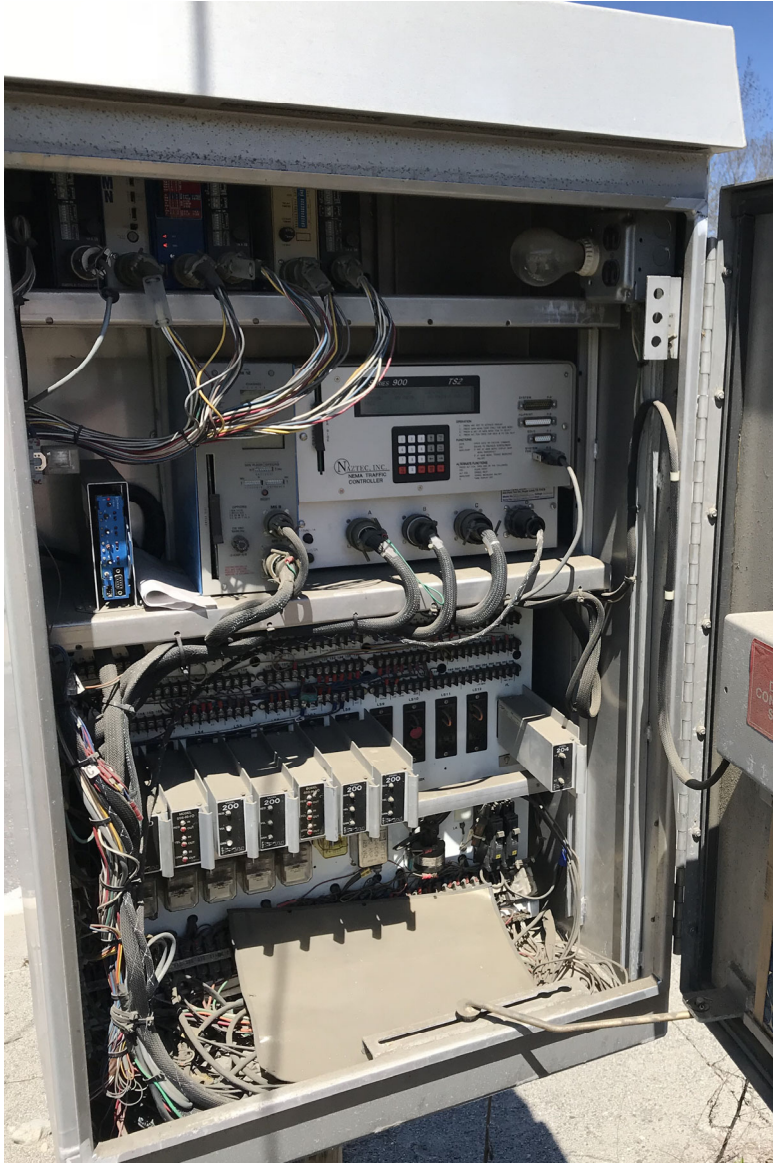
**Existing 025321.00 Pole Mounted Black "M"-Type TS-1
Intersection Control Cabinet**



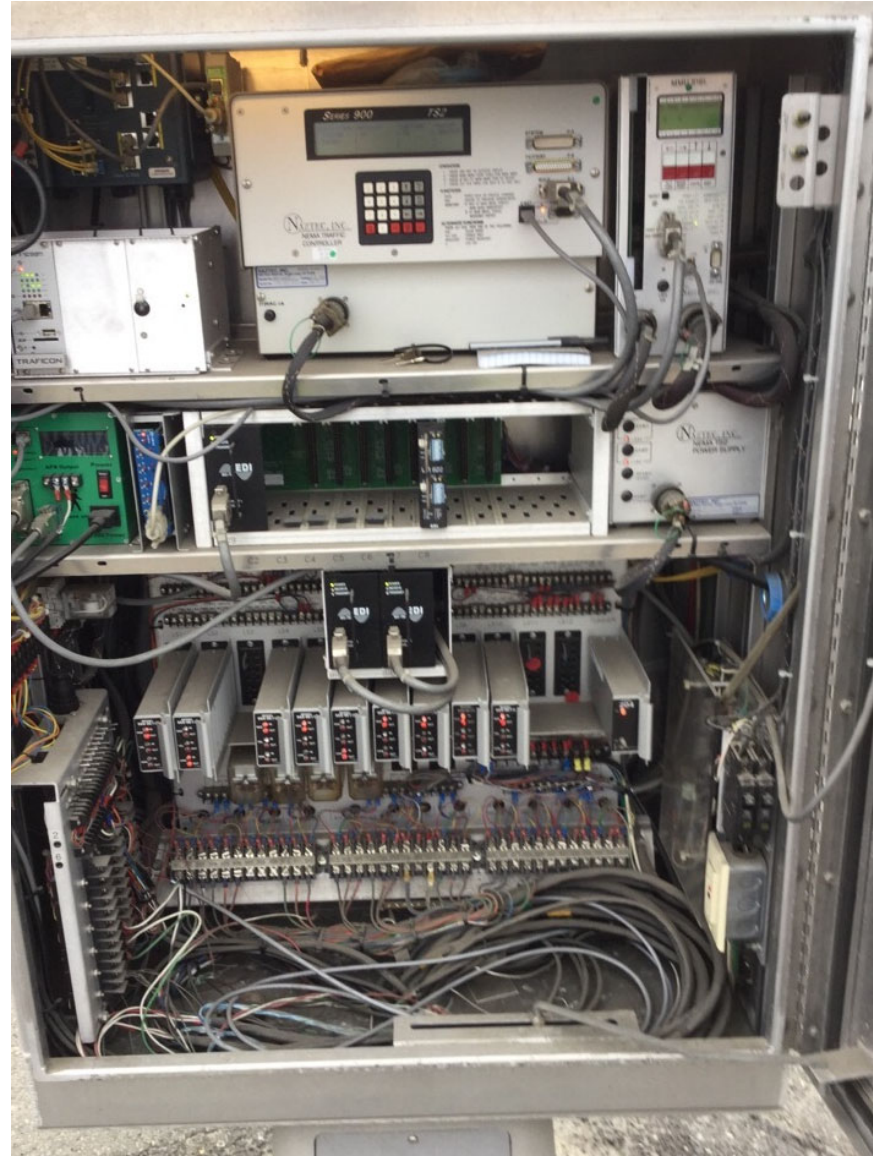
**Proposed 024301.00 Salvaged T-Base Black "M"-Type TS-2
Intersection Control Cabinet ("12" Hospital/Piggery)**

***Note: Will Need To Be Repainted Black
Presently Available in MaineDOT Conex Box***

Manchester
Western Avenue at Pond Road and Readfield Road

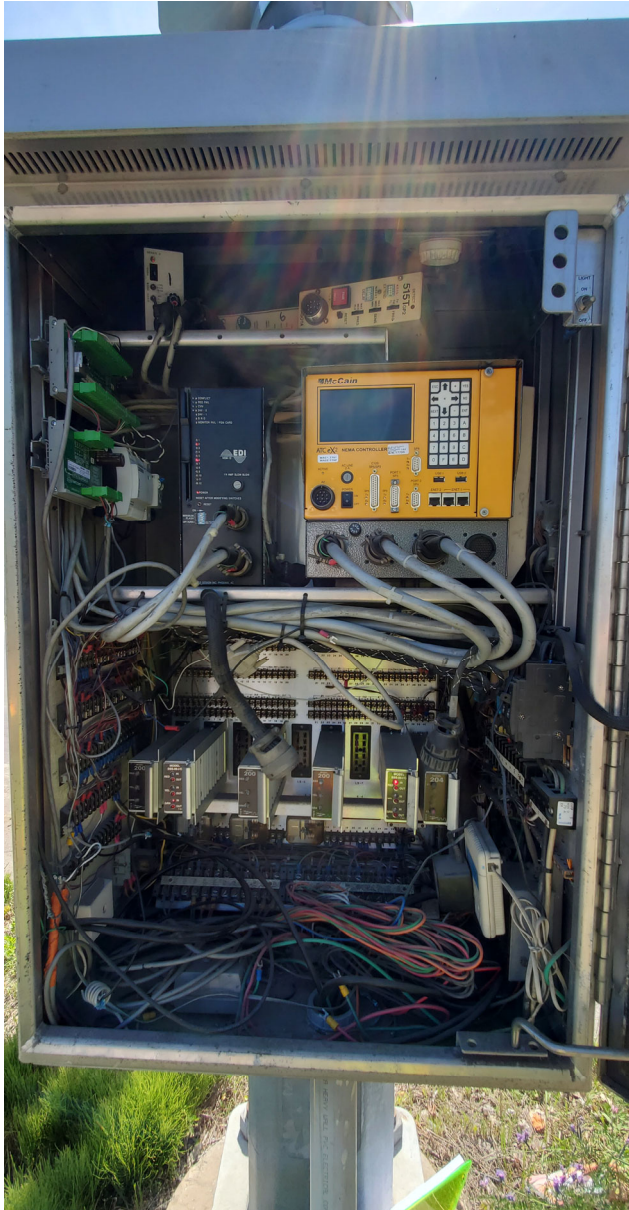


**Existing 025321.00 Pole Mounted "M"-Type TS-1
Intersection Control Cabinet**

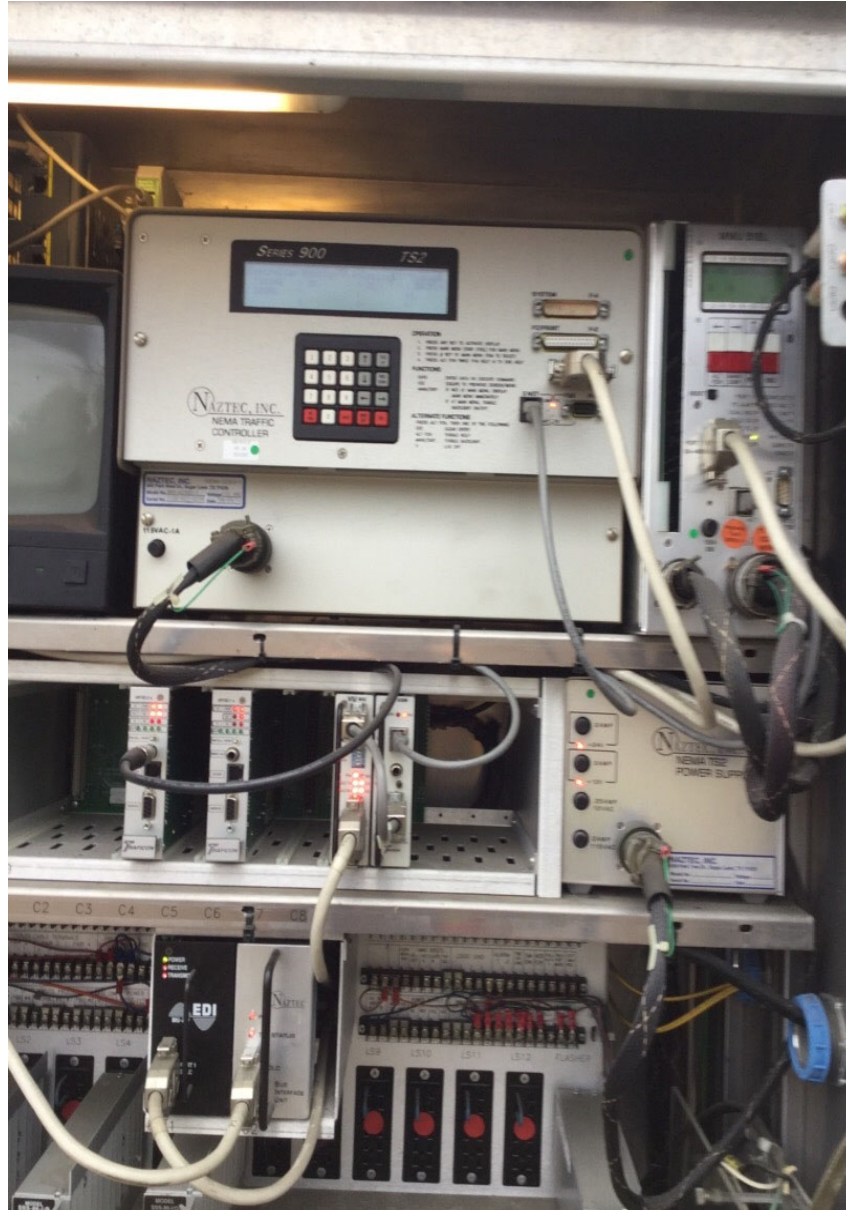


**Proposed 024301.00 Salvaged T-Base "M"-Type TS-2
Intersection Control Cabinet ("93" Main/Armory Waterville)**
Anticipated Available in mid-2023

Milford
Main Road at Bradley Road



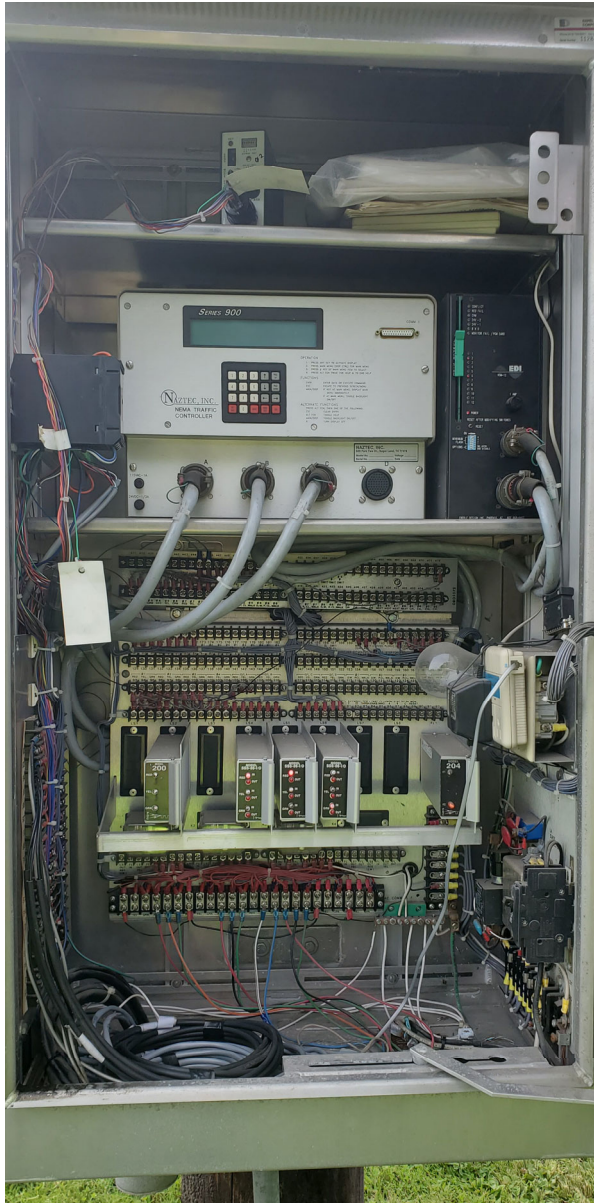
**Existing 025321.00 Pole Mounted "M"-Type TS-1
Intersection Control Cabinet**



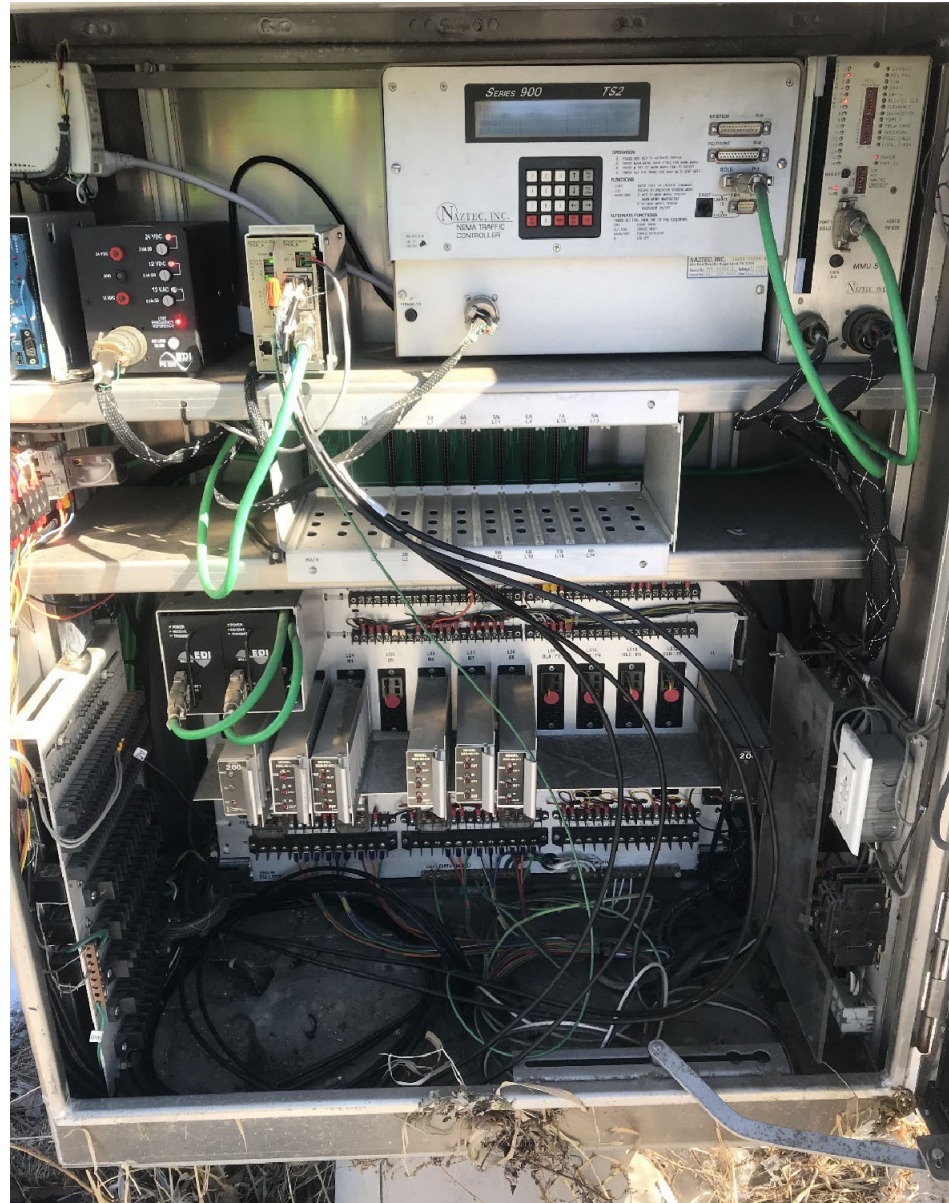
**Proposed 024301.00 Salvaged T-Base "M"-Type TS-2
Intersection Control Cabinet ("95" Main/NB Ramps Waterville)**
Anticipated Available in mid-2023

Thomaston

Main Street at New County Road and High Street



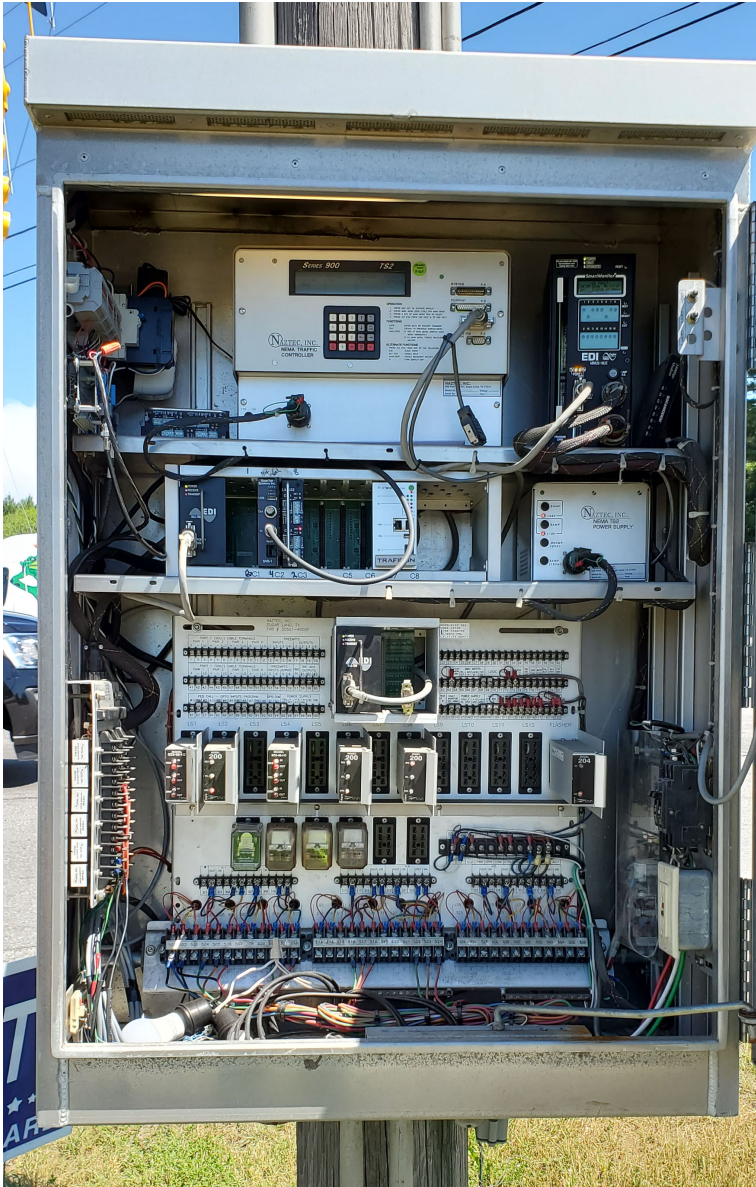
Existing 025321.00 Pole Mounted "M"-Type TS-1
Intersection Control Cabinet



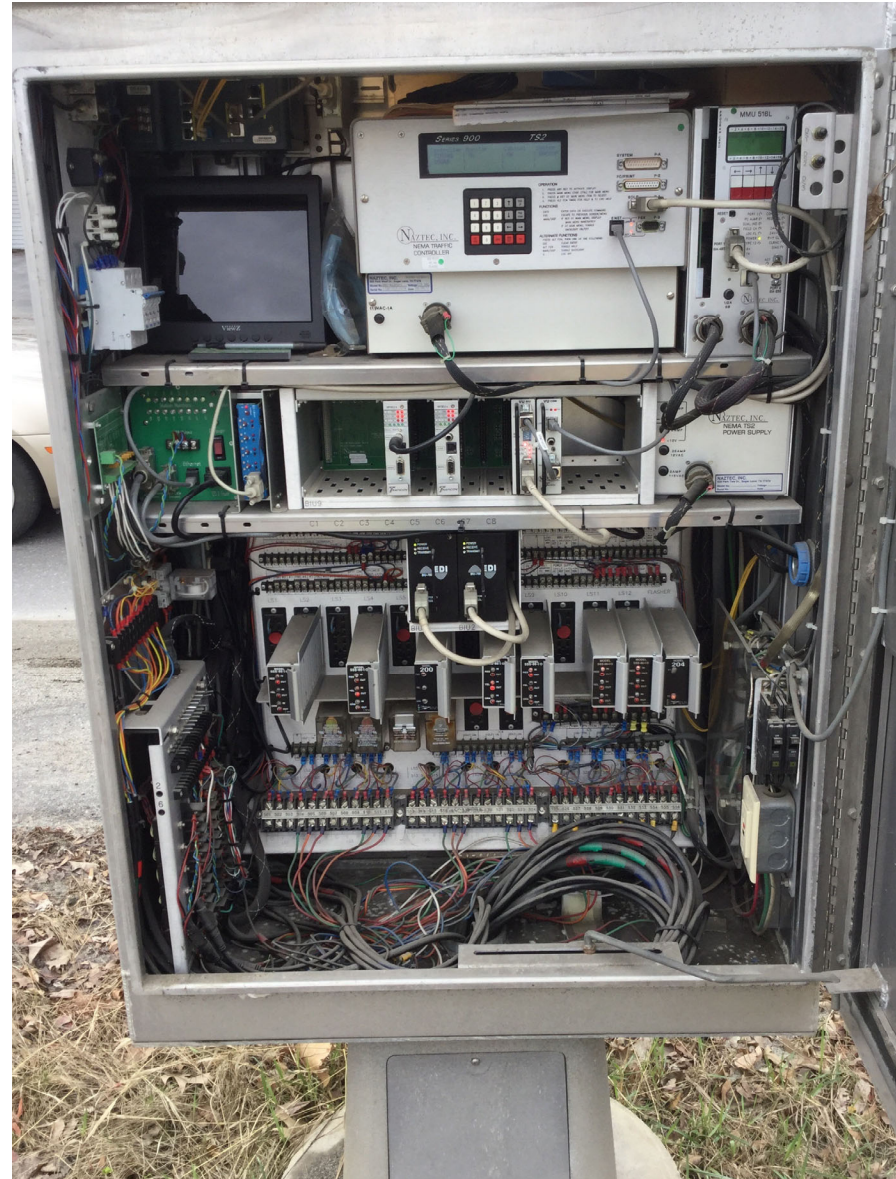
Proposed 024301.00 Salvaged T-Base "M"-Type TS-2
Intersection Control Cabinet ("16" Route 3/Route 104 Augusta)
Presently Available in MaineDOT Conex Box

Waterboro

Sokokis Trail at Ossipee Hill Road and Town House Road

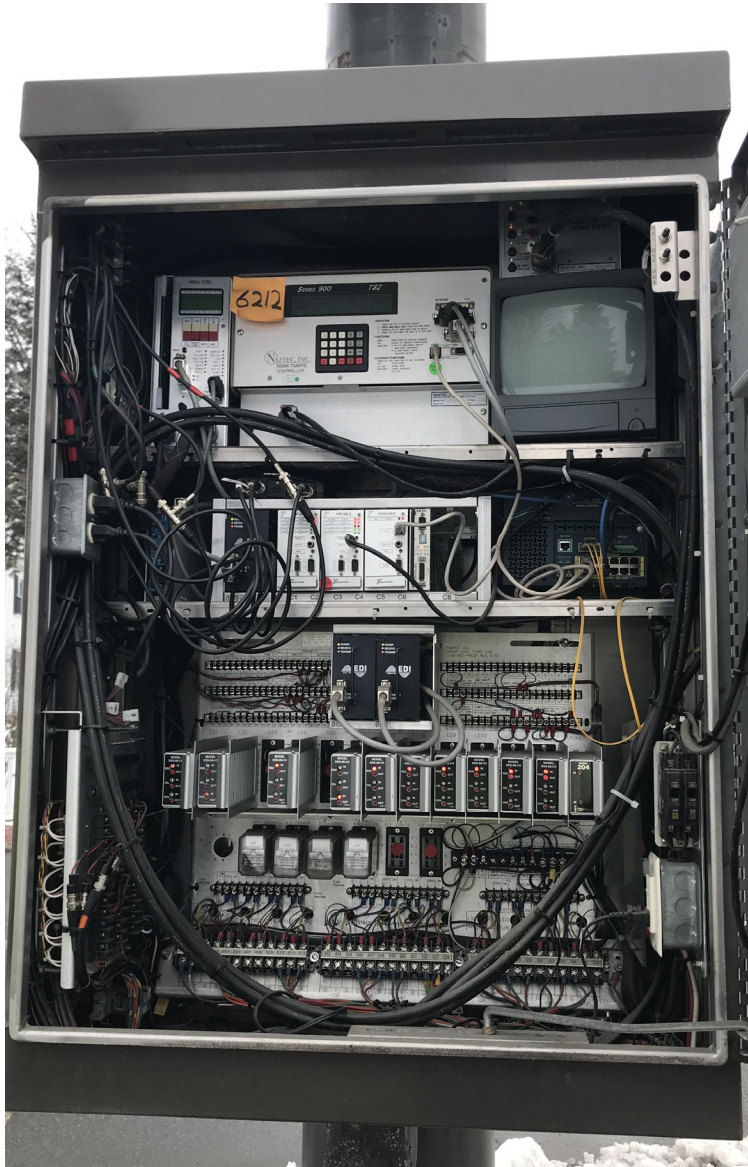


Existing 025321.00 Pole Mounted "M"-Type TS-1
Intersection Control Cabinet

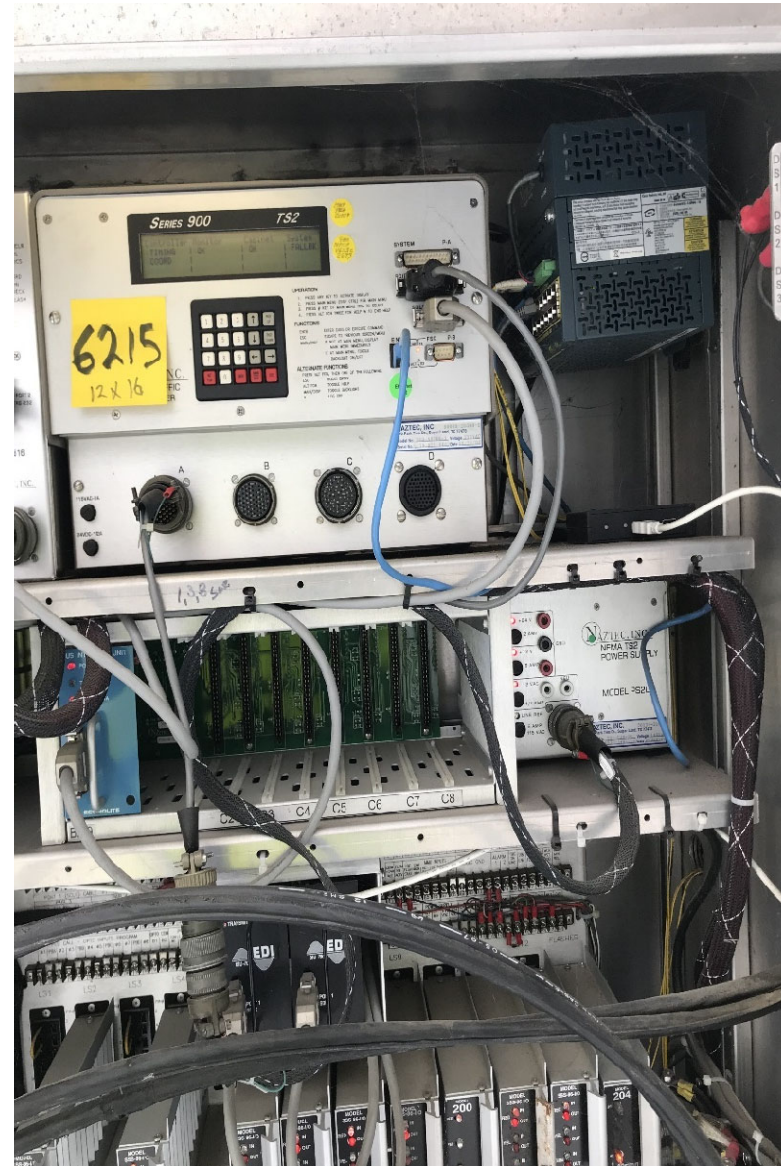


Proposed 024301.00 Salvaged T-Base "M"-Type TS-2
Intersection Control Cabinet ("92" Main/Eustis/Oak Waterville)
Anticipated Available in mid-2023

Other Unassigned *MaineDOT* M-Type TS-2 Available in 2022

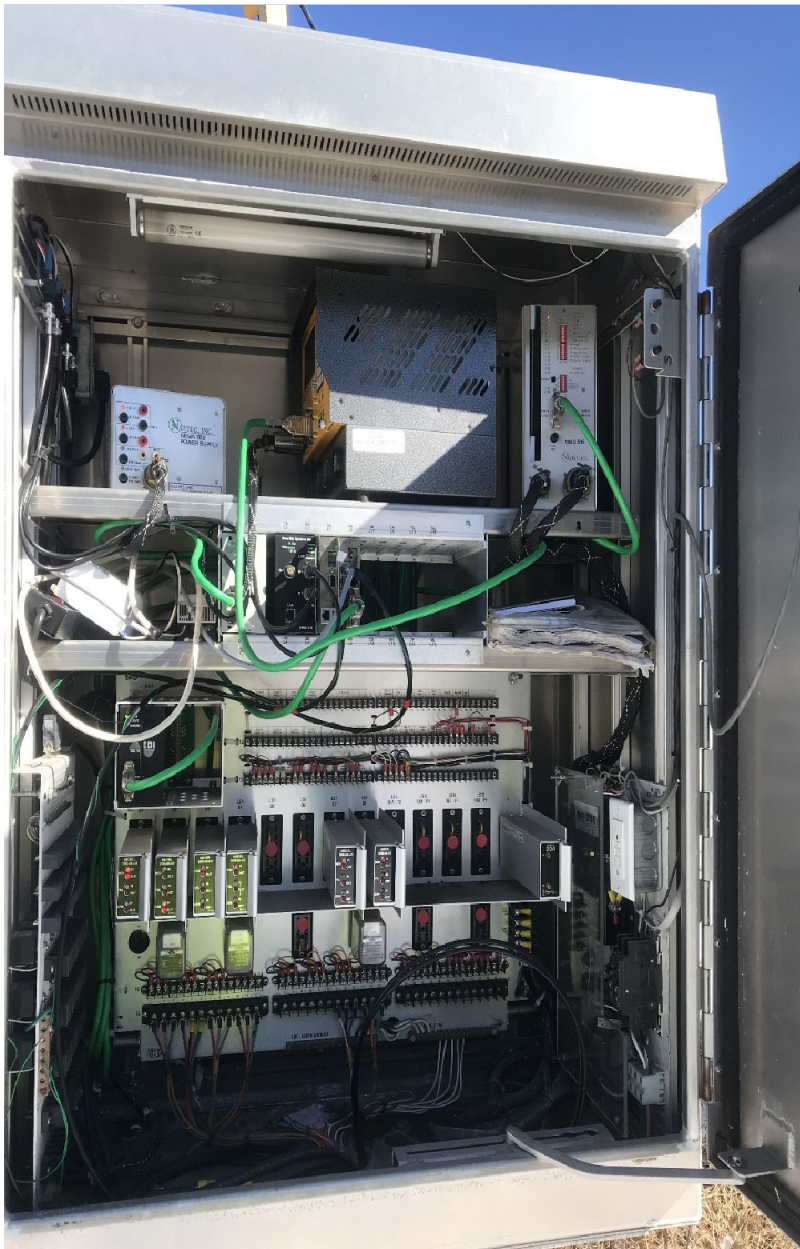


024301.00 Salvaged Pole Mount Copper "M"-Type TS-2 Intersection Control Cabinet ("19" State/Capitol Augusta)
Presently Available in MaineDOT Conex Box

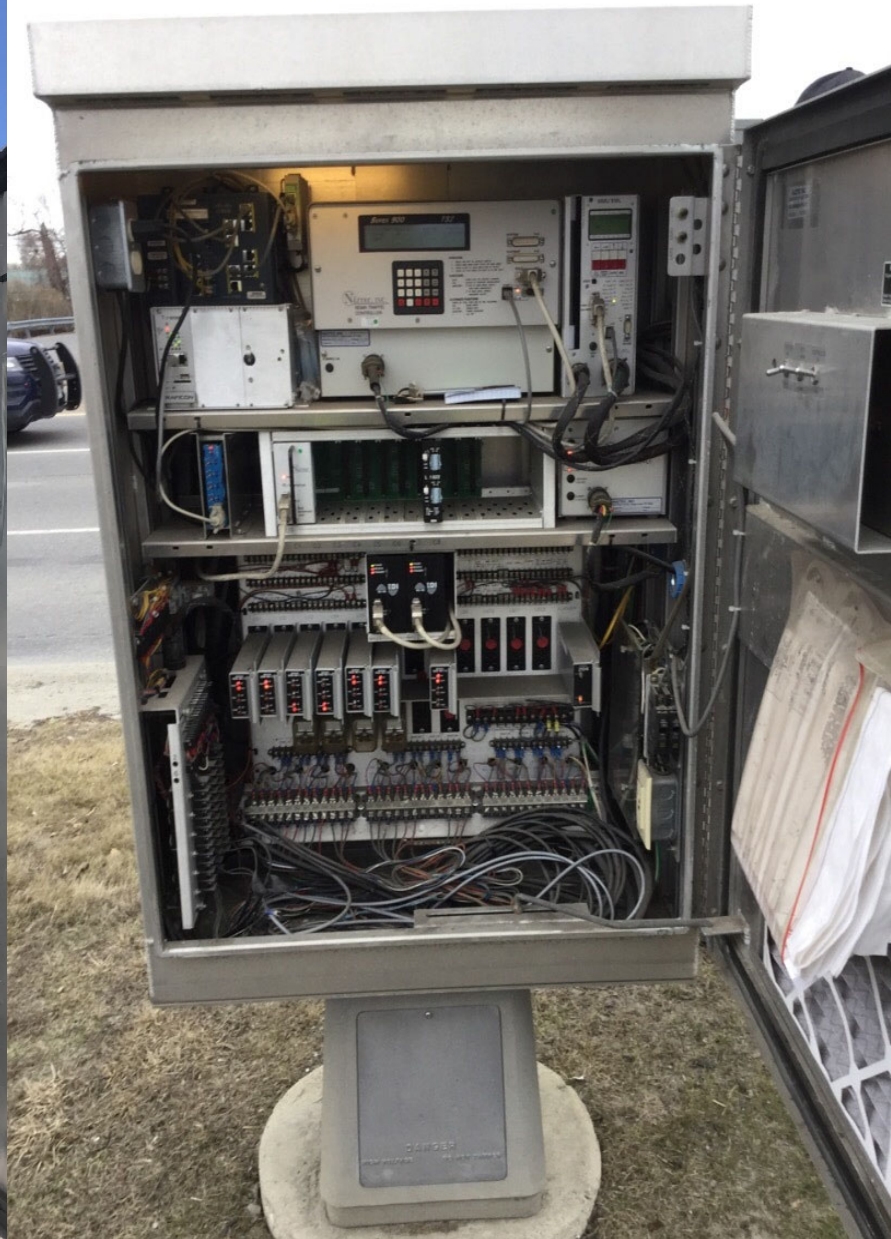


Proposed 024301.00 Salvaged T-Base "M"-Type TS-2 Intersection Control Cabinet ("35" State/Bridge Augusta)
Presently Available (Potential Water Damaged)

Other Unassigned *MaineDOT* M-Type TS-2 Available in 2022 mid-2023

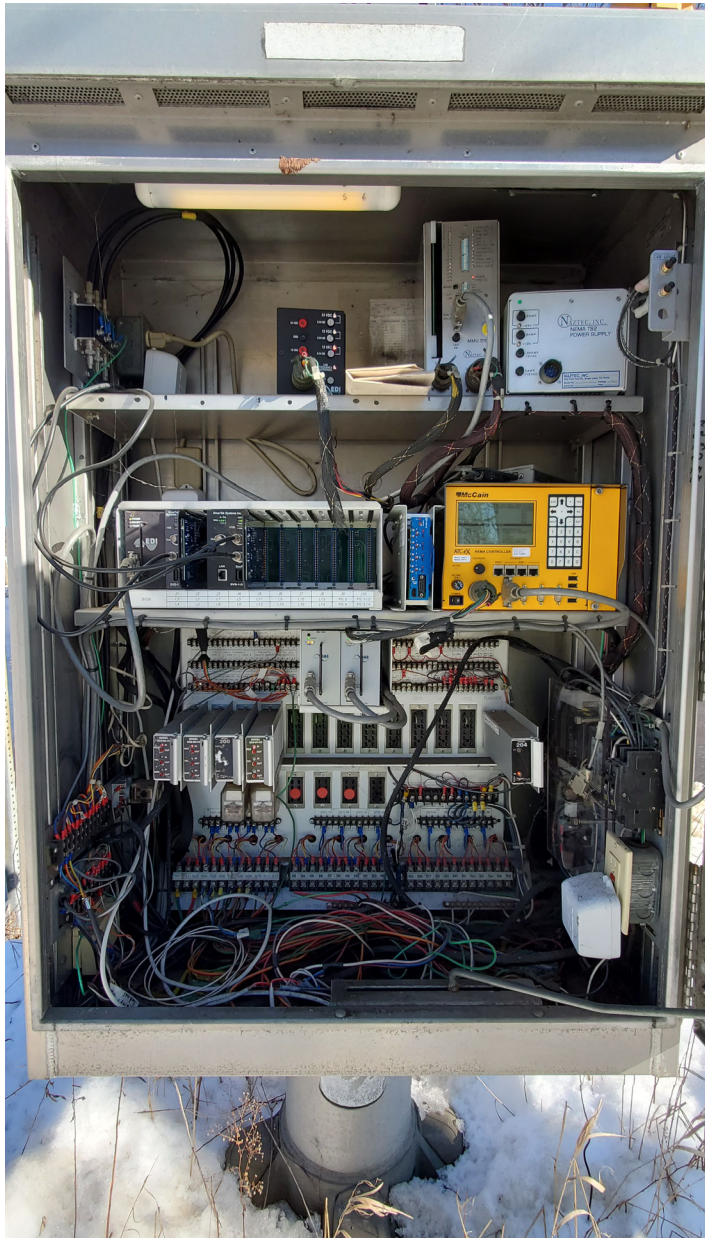


Proposed 024301.00 Salvaged T-Base "M"-Type TS-2
Intersection Control Cabinet ("14" Route 3/North Belfast Augusta)
Presently Available (*Backpanel Upper Left Corner Appears Damaged*)

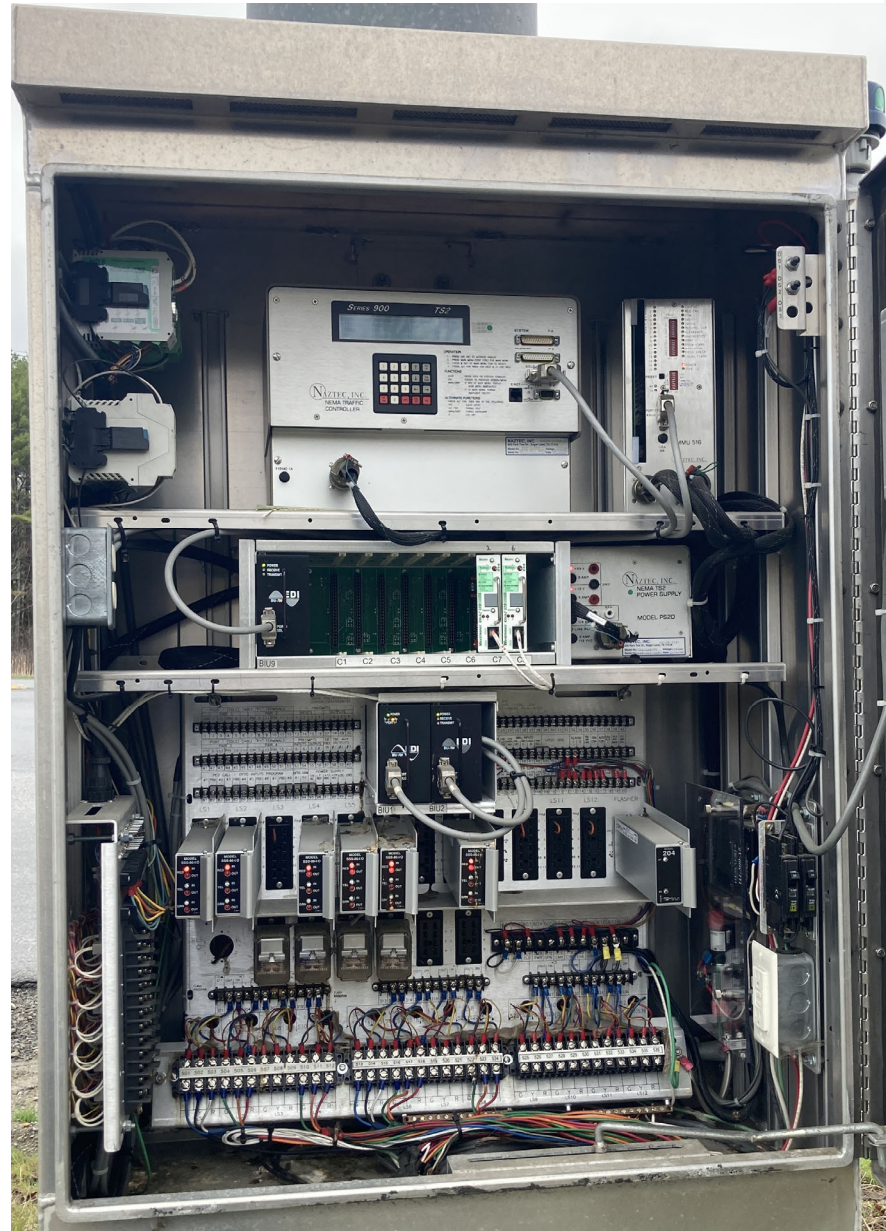


Proposed 024301.00 Salvaged T-Base "M"-Type TS-2
Intersection Control Cabinet ("94" Main/Commons Waterville)
Anticipated Available in mid-2023

Other Unassigned *MaineDOT* M-Type TS-2 Available in 2024



Proposed 024301.00 Salvaged Pole Mount "M"-Type TS-2 Intersection Control Cabinet ("59" Bridge/Water Randolph)
Anticipated Available in mid-2024



Proposed 024301.00 Salvaged T-Base "M"-Type TS-2 Intersection Control Cabinet ("73" Routes 202 and 32 China)
Anticipated Available in mid-2024