

Search

Smyrna, Maine, ME Search

ex: NYC

Get Directions History

📍 Smyrna

📌

📌

📌

+

Places

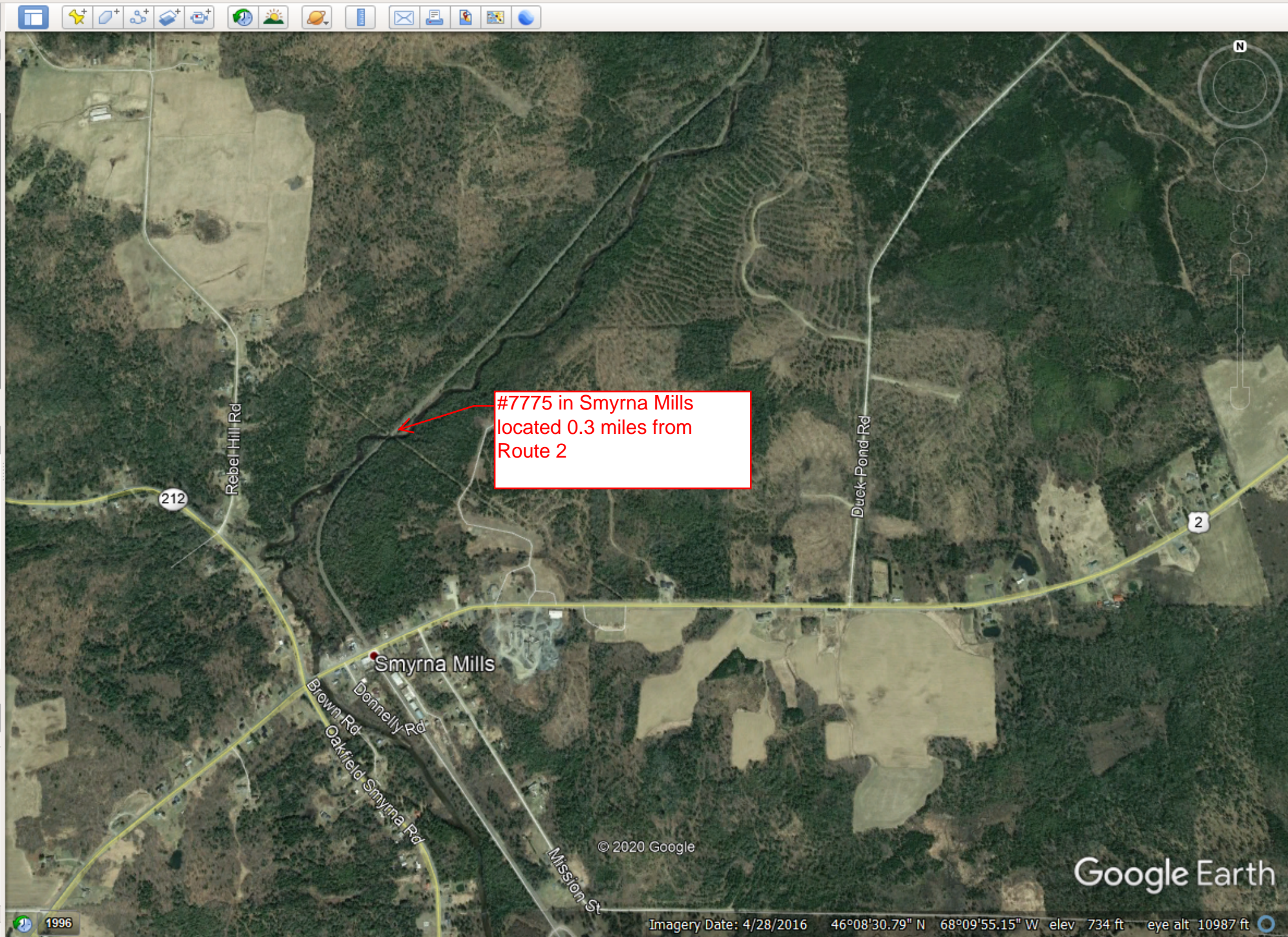
- My Places
- Sightseeing Tour
 - Make sure 3D Buildings layer is checked
- Temporary Places

🔍

↑ ↓

Layers

- Primary Database
- Announcements
- Borders and Labels
- Places
- Photos
- Roads
- 3D Buildings
- Weather
- Gallery
- More
- Terrain



© 2020 Google

Google Earth

1996

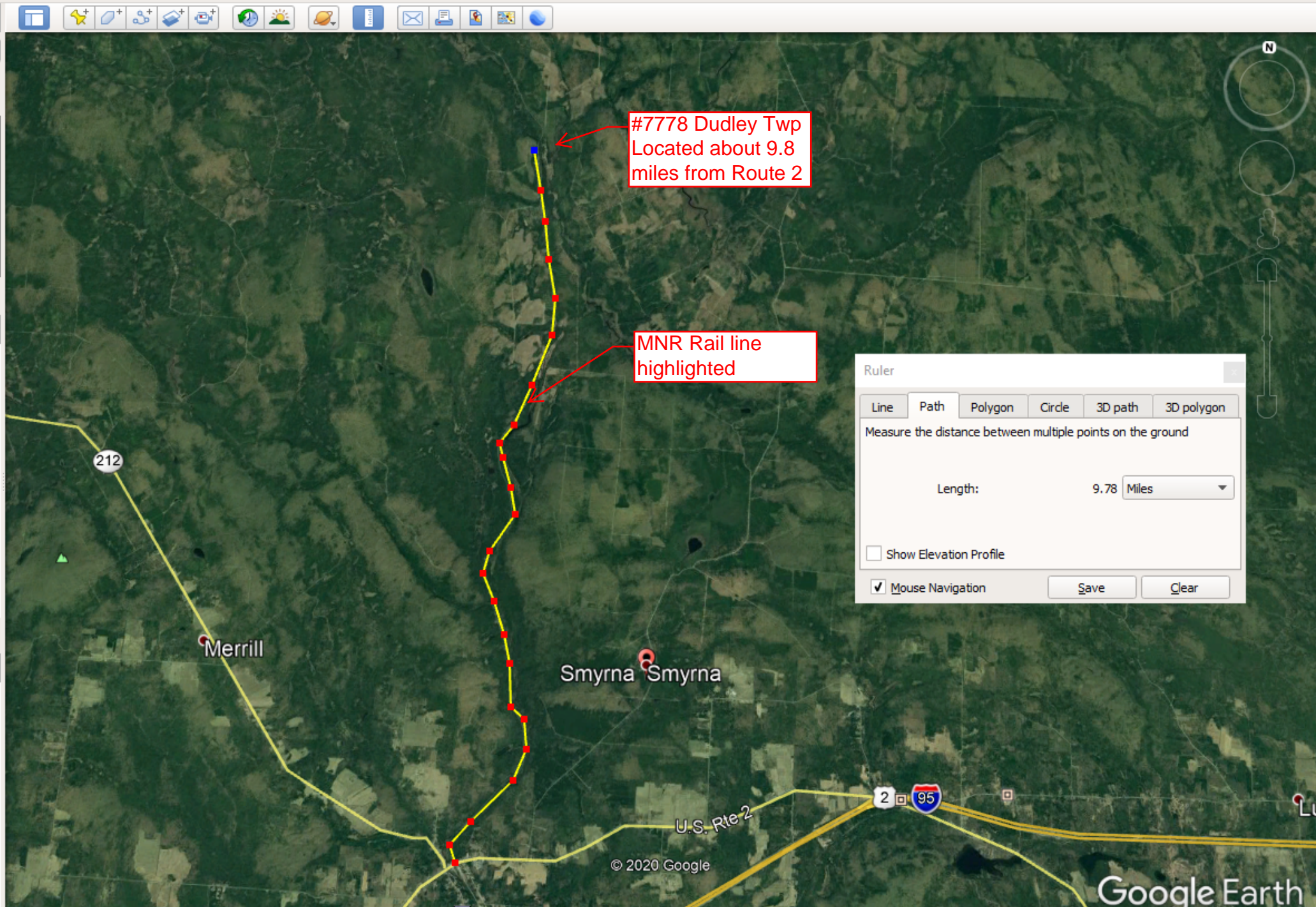
Imagery Date: 4/28/2016 46°08'30.79" N 68°09'55.15" W elev 734 ft eye alt 10987 ft

Smyrna

My Places

- Sightseeing Tour
- Temporary Places

- Primary Database
- Announcements
- Borders and Labels
- Places
- Photos
- Roads
- 3D Buildings
- Weather
- Gallery
- More
- Terrain



#7778 Dudley Twp
 Located about 9.8
 miles from Route 2

MNR Rail line
 highlighted

Ruler

Line Path Polygon Circle 3D path 3D polygon

Measure the distance between multiple points on the ground

Length: 9.78 Miles

Show Elevation Profile

Mouse Navigation Save Clear


Search

Smyrna, ME Search

ex: NYC

Get Directions History

Smyrna

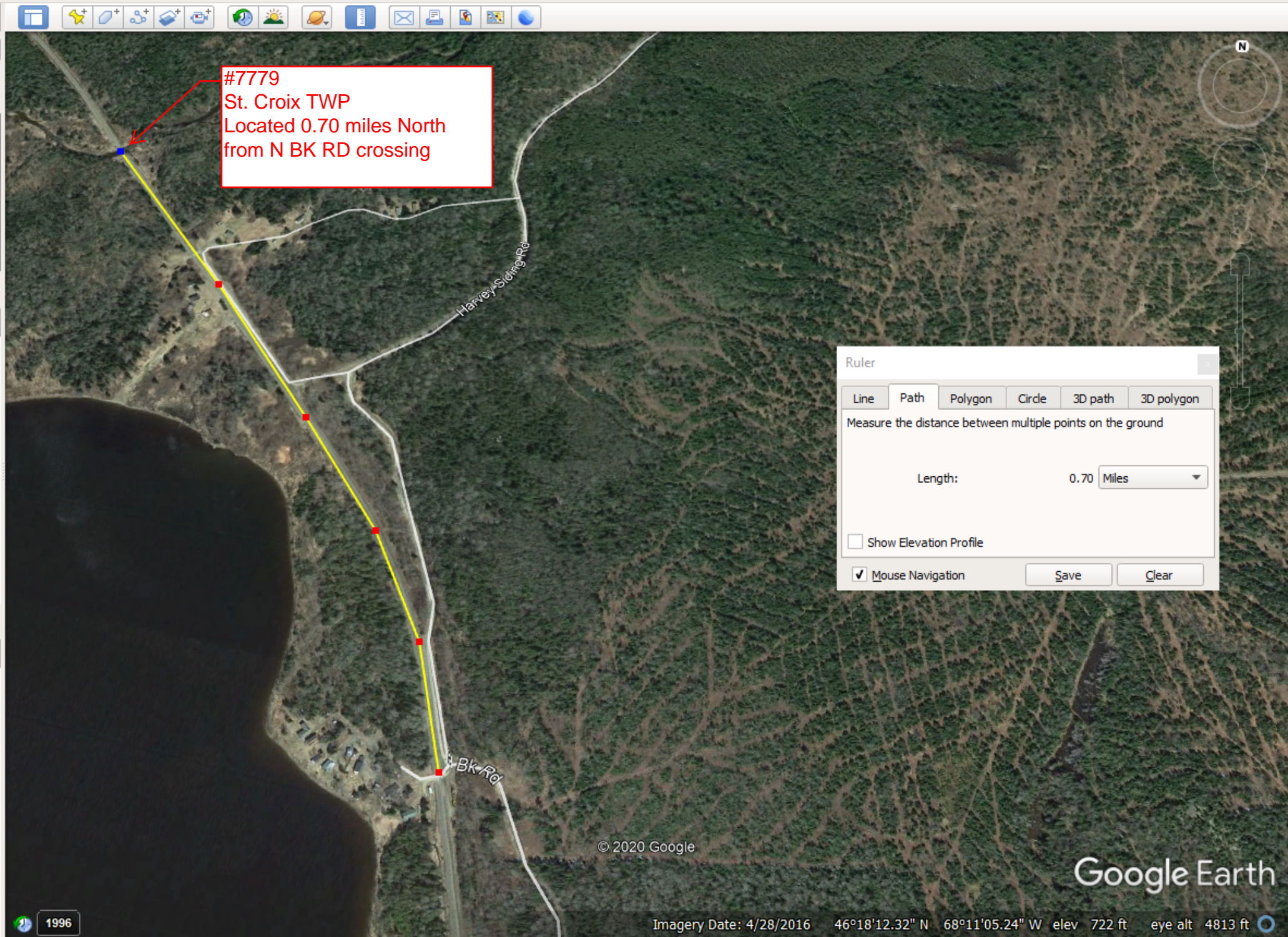


My Places

- Sightseeing Tour
- Temporary Places

Layers

- Primary Database
- Announcements
- Borders and Labels
- Places
- Photos
- Roads
- 3D Buildings
- Weather
- Gallery
- More
- Terrain



#7779
 St. Croix TWP
 Located 0.70 miles North
 from N BK RD crossing

Ruler

Line Path Polygon Circle 3D path 3D polygon

Measure the distance between multiple points on the ground

Length: 0.70 Miles

Show Elevation Profile

Mouse Navigation Save Clear

© 2020 Google

Google Earth

1996

Imagery Date: 4/28/2016 46°18'12.32" N 68°11'05.24" W elev 722 ft eye alt 4813 ft



Search

N BK RD, ME Search

ex: NYC

Get Directions History

N Bk Rd

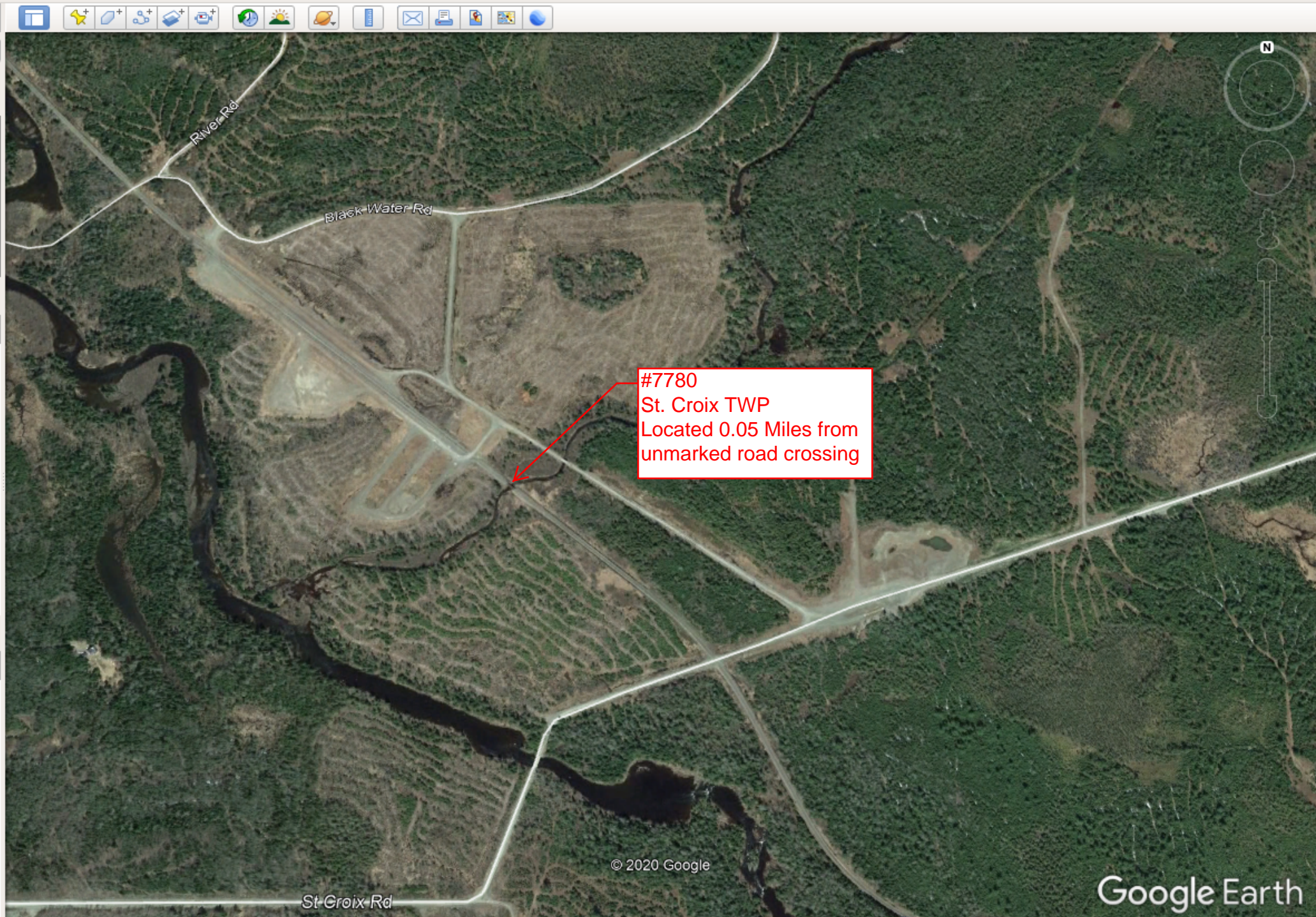
Places

- My Places
- Sightseeing Tour
 - Make sure 3D Buildings layer is checked
- Temporary Places



Layers

- Primary Database
- Announcements
- Borders and Labels
- Places
- Photos
- Roads
- 3D Buildings
- Weather
- Gallery
- More
- Terrain



© 2020 Google

Google Earth

1996

Imagery Date: 4/28/2016 46°20'10.04" N 68°14'16.91" W elev 721 ft eye alt 6644 ft

Masardis

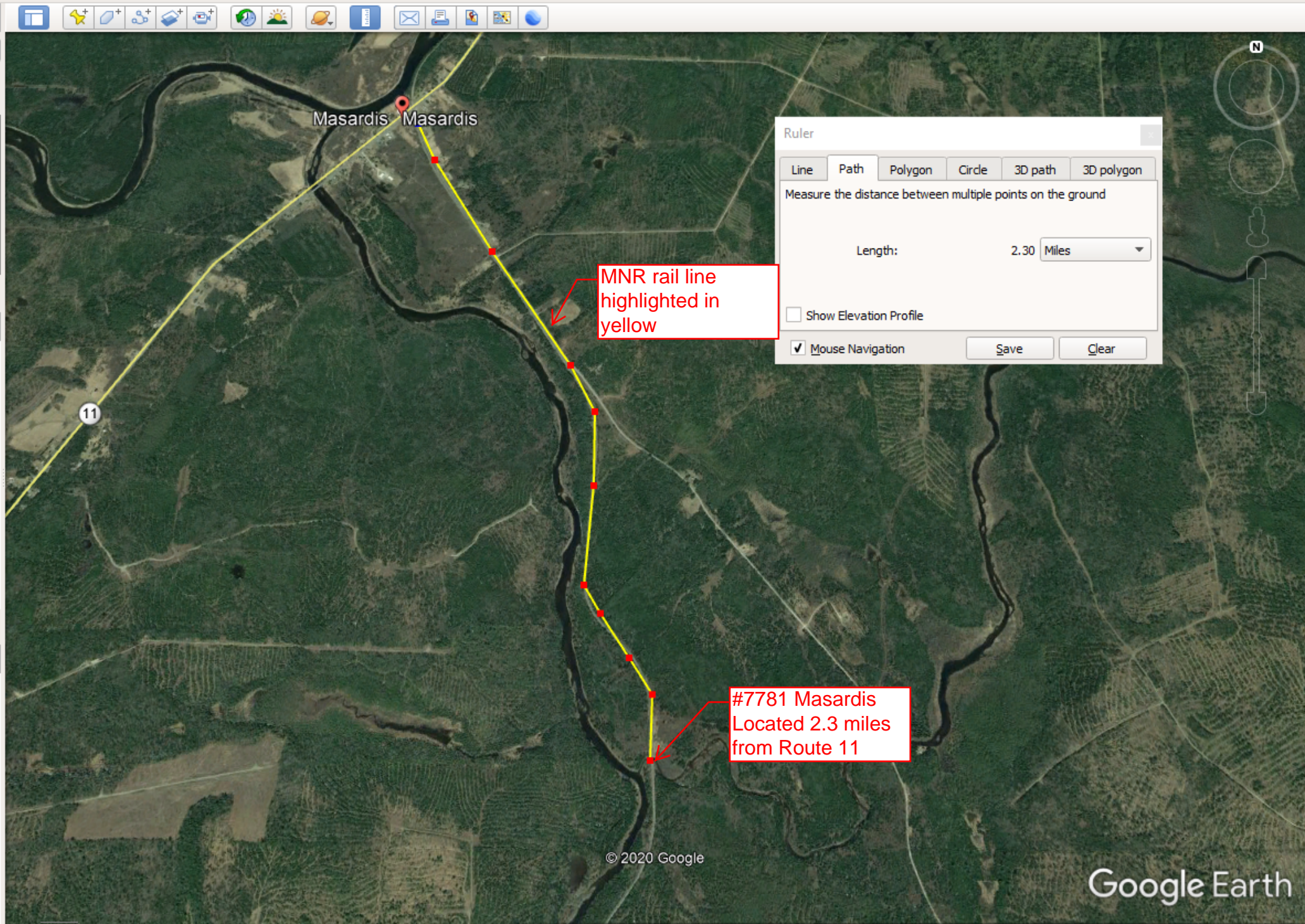
Masardis

My Places

- Sightseeing Tour
- Temporary Places

Layers

- Primary Database
- Announcements
- Borders and Labels
- Places
- Photos
- Roads
- 3D Buildings
- Weather
- Gallery
- More
- Terrain



#7775 North Abutment



#7775 South Abutment



#7777 North Abutment

