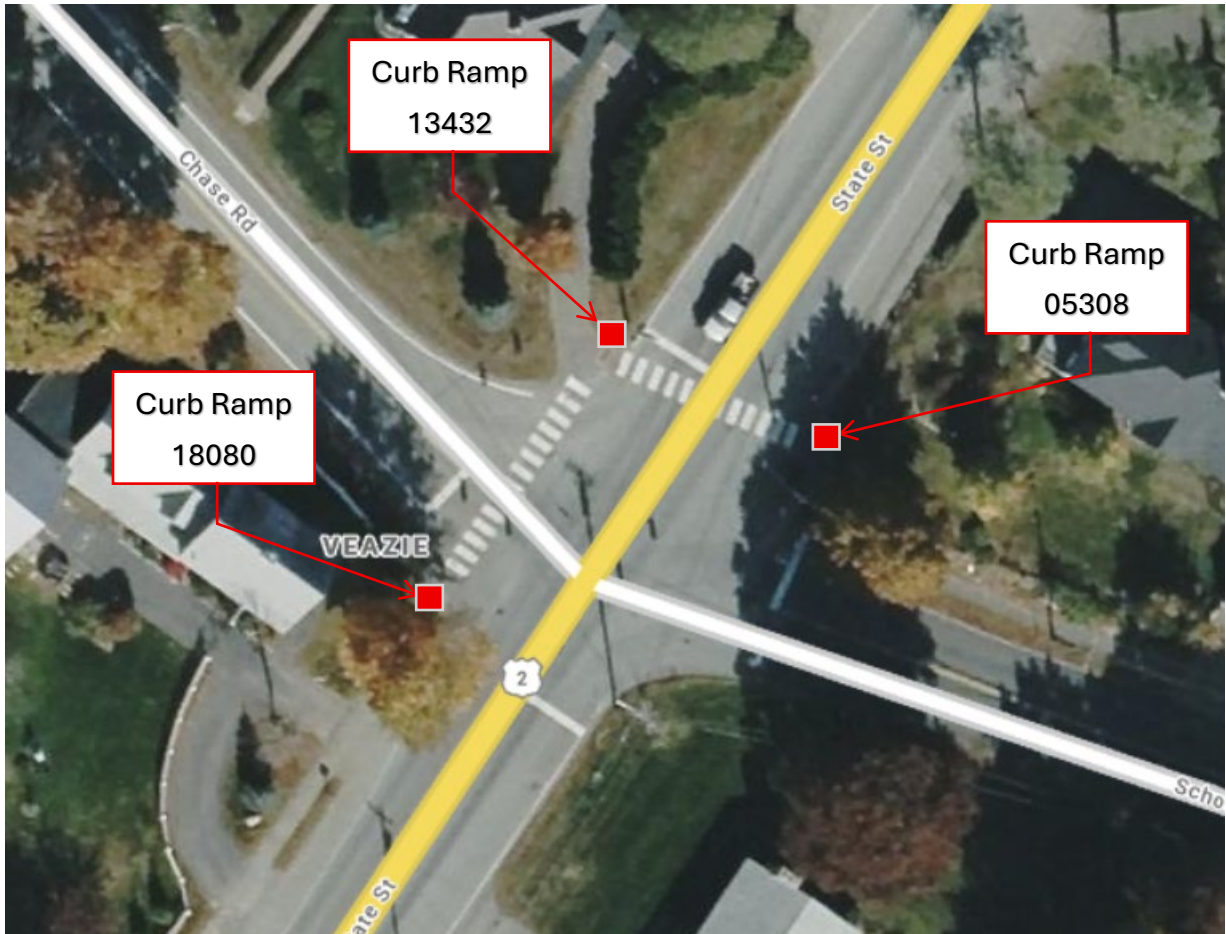


ADA Pedestrian Ramp Report



US Route 2 (State Street) / School Street (CR05308)

(44.833594, -68.710849)

Reconstruct Pedestrian Ramp

- Remove existing pavement on the landing and sidewalk, approximately 20' x 5'
- Regrade existing landing and sidewalk, approximately. 20' x 5'
- Repave existing landing and sidewalk, approximately. 20' x 5'
- Remove existing curb approximately 14'
- Install 14' of new Type 3 Curb
- Install 5' x 2' Detectable Warning Field
- Remove the existing crosswalk paint
- Paint crosswalk across US Route 2 between Asset ID's CR05308 and CR13432 new location

US Route 2 (State Street) / Chase Road. (CR13432)

(44.833661, -68.711026)

Reconstruct Pedestrian Ramp

- Reconstruct similar to Standard Detail 801(27). To avoid the catch basin, move the landing towards the pole
- Remove existing pavement landing, approximately 15' x 10'
- Regrade existing landing, approximately 15' x 10'
- Repave the newly adjusted landing 15' x 10'
- Install 5' x 2' Detectable Warning Field
- Remove existing curb, approximately 8'
- Install 8' of new Type 3 Curb
- Repaint crosswalk across Chase Road between Asset ID's CR13432 and CR18080.

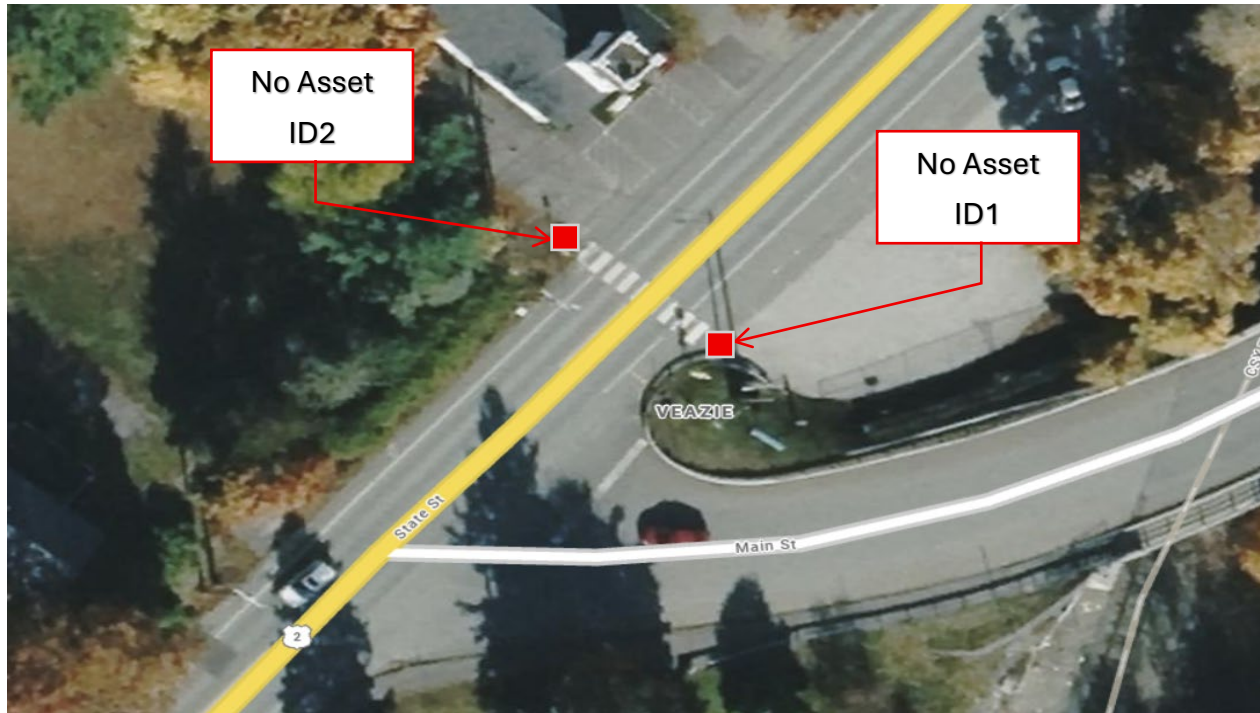
Chase Road Southwest (CR18080)

(44.833487, -68.711187)

Reconstruct Pedestrian Ramp

- Reconstruct similar to Standard Detail 801 (22)
- Remove existing pavement on sidewalk 5' x 10'
- Regrade existing sidewalk approximately 5' x 10'
- Repave existing sidewalk approximately 5' x 10'
- Remove existing curb, approximately 8'
- Install 8' of new Type 3 Curb
- Install 5' x 2' Detectable Warning Field

ADA Pedestrian Ramp Report



US Route 2 (State Street) (No Asset ID1)

(44.835966, -68.708448)

Reconstruct Pedestrian Ramp

- Remove existing pavement on sidewalk, approximately 5' x 5'
- Regrade existing sidewalk, approximately 5' x 5'
- Repave existing sidewalk, approximately 5' x 5'
- Install 5' x 2' Detectable Warning Field
- Repaint crosswalk across US Route 2 between Asset ID1 and ID2.
- Install new Regulatory Pedestrian sign and also reattach the directional sign to the existing post and reset

US Route 2 (State Street) (No Asset ID2)

(44.836038, -68.708568)

Reconstruct Pedestrian Ramp

- Remove existing pavement on sidewalk, approximately 5' x 5'
- Regrade existing sidewalk, approximately 5' x 5'
- Repave existing sidewalk, approximately 5' x 5'
- Install 5' x 2' Detectable Warning Field
- Install new Regulatory Pedestrian sign