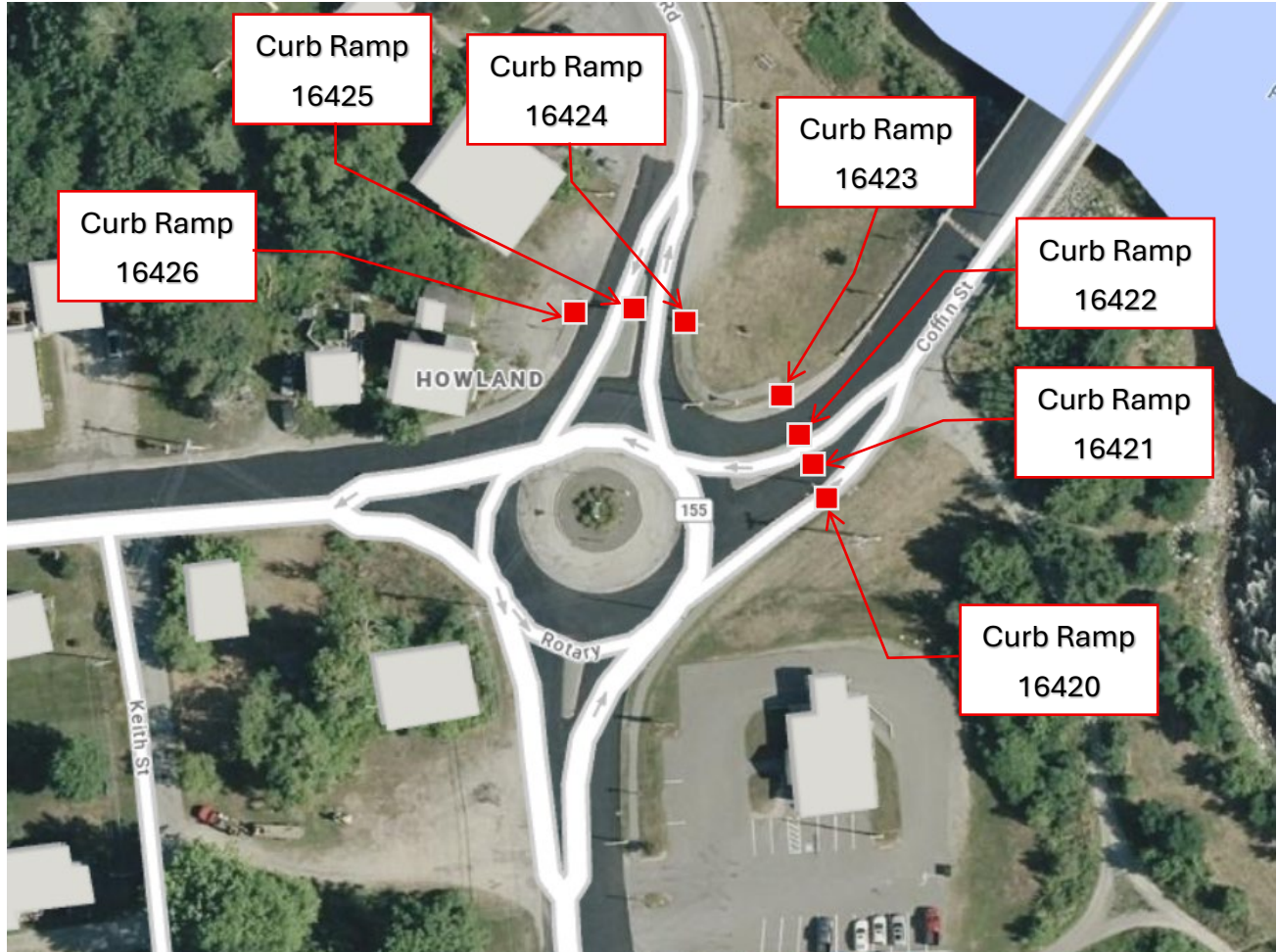


ADA Pedestrian Ramp Report



Coffin Street South (CR16420)

(45.238580, -68.659744)

Reconstruct Pedestrian Ramp

- Reconstruct similar to Standard Detail 801(23)
- Remove existing pavement landing and sidewalk, approximately 25' x 6'
- Regrade existing landing and sidewalk, approximately 25' x 6'
- Repave existing landing and sidewalk, approximately 25' x 6'
- Install 5' x 2' Detectable Warning Field
- Install new Regulatory Pedestrian Sign
- Repaint crosswalk across Coffin Street between Asset ID's CR16420 and CR16421

Coffin Street Island Median (CR16421 & CR16422)

(45.238629, -68.659795)

Reconstruct Pedestrian Ramp

- Reconstruct similar to Standard Detail 801(25)
- Remove existing landing pavement, approximately 6' x 6'
- Regrade existing landing pavement, approximately 6' x 6'
- Repave the existing landing, approximately 6' x 6'
- Install (2) 5' x 2' Detectable Warning Field

Coffin Street North (CR16423)

(45.238690, -68.659858)

Reconstruct Pedestrian Ramp

- Remove existing landing and sidewalk pavement, approximately 5' x 5'
- Regrade existing landing and sidewalk, approximately 5' x 15'
- Repave existing landing and sidewalk, approximately 5' x 15'
- Install 5' x 2' Detectable Warning Field
- Install new Regulatory Pedestrian Sign
- Repaint crosswalk across Coffin Street between Asset ID's CR16423 and CR16422

River Road West-Northwest (CR16424)

(45.238790, -68.660070)

Reconstruct Pedestrian Ramp

- Remove existing landing pavement, approximately 5' x 15'
- Regrade existing landing, approximately 5' x 15'
- Repave existing landing, approximately 5' x 15'
- Install 5' x 2' Detectable Warning Field
- Install new Regulatory Pedestrian Sign
- Repaint crosswalk across Coffin Street between Asset ID's CR16424 and CR16425

River Road Island Median (CR16425)

(45.238800, -68.660154)

Reconstruct Pedestrian Ramp

- Reconstruct similar to Standard Detail 801(25)
- Remove existing landing pavement, approximately 6' x 6'
- Regrade existing landing pavement, approximately 6' x 6'
- Repave the existing landing, approximately 6' x 6'
- Install (2) 5' x 2' Detectable Warning Field

River Road Northwest (CR16426)

(45.238831, -68.660254)

Reconstruct Pedestrian Ramp

- Remove existing landing and sidewalk pavement, approximately 5' x 15'
- Regrade existing landing and sidewalk, approximately 5' x 15'
- Repave existing landing and sidewalk, approximately 5' x 15'
- Maintain positive drainage into the catch basin with finished location
- Install 5' x 2' Detectable Warning Field
- Install new Regulatory Pedestrian Sign
- Repaint crosswalk across Coffin Street between Asset ID's CR16426 and CR16425