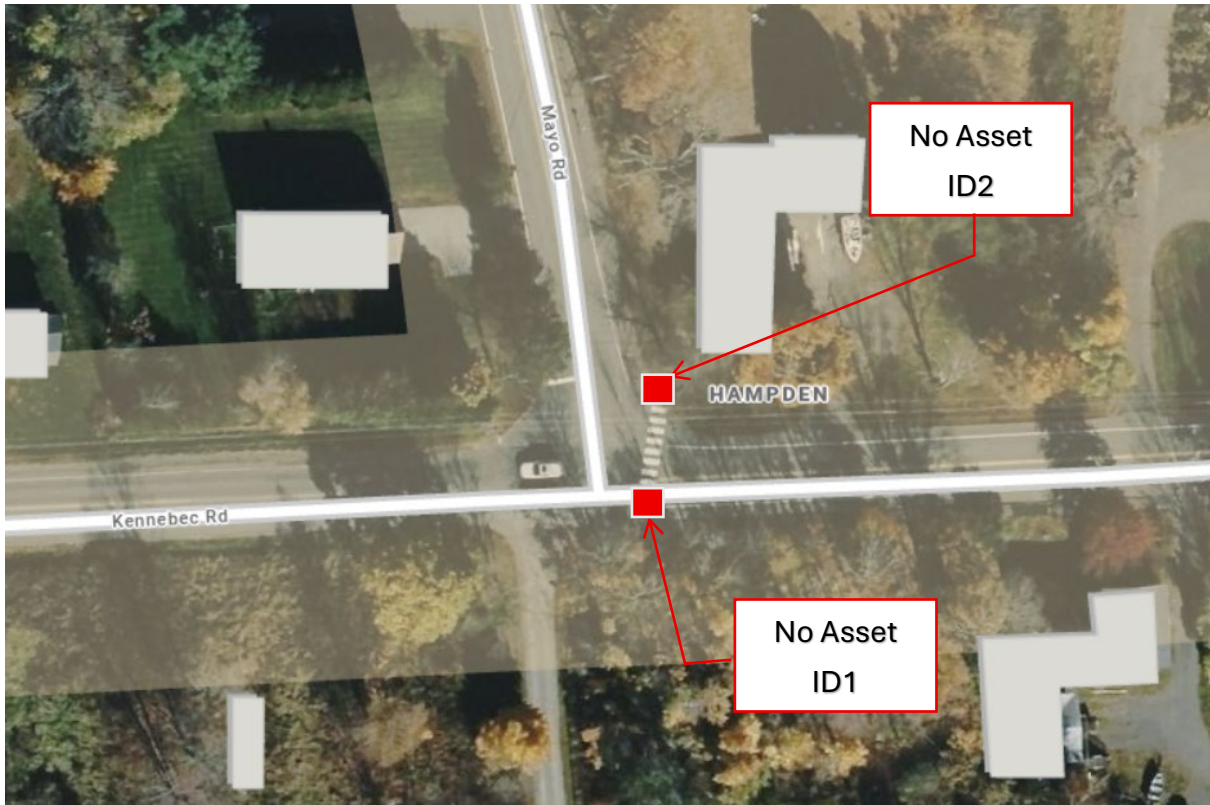


ADA Pedestrian Ramp Report



Kennebec Road (No Asset ID1)

(44.731807, -68.858619)

Construct New Pedestrian Ramp

- Construct similar to Standard Detail 801 (27). Shift the landing location so it will sit perpendicular to Asset ID2
- Remove existing pavement on sidewalk, approximately 20' x 5'
- Regrade existing sidewalk, approximately 20' x 5'
- Repave existing sidewalk, approximately 14' x 5'
- Place 14' of new Type 3 Curb
- Install 5' x 2' Detectable Warning Field
- Remove existing crosswalk
- Paint a new crosswalk across Kennebec Road between Asset ID1 and ID2
- Install Regulatory Pedestrian sign

Kennebec Road/Mayo Road (No Asset ID2).

(44.731934, -68.858588)

Construct New Pedestrian Ramp

- Construct similar to Standard Detail 801(22). Extend the sidewalk and relocate the landing towards Kennebec Road
- Remove existing pavement on sidewalk, approximately 16' x 5'
- Regrade existing sidewalk, approximately 16' x 5'
- Repave existing sidewalk, approximately 16' x 5'
- Remove and reset 8' Terminal Curb Type 1
- Install 6' of new Vertical Curb Type 1
- Install 5' x 2' Detectable Warning Field
- Install Regulatory Pedestrian sign