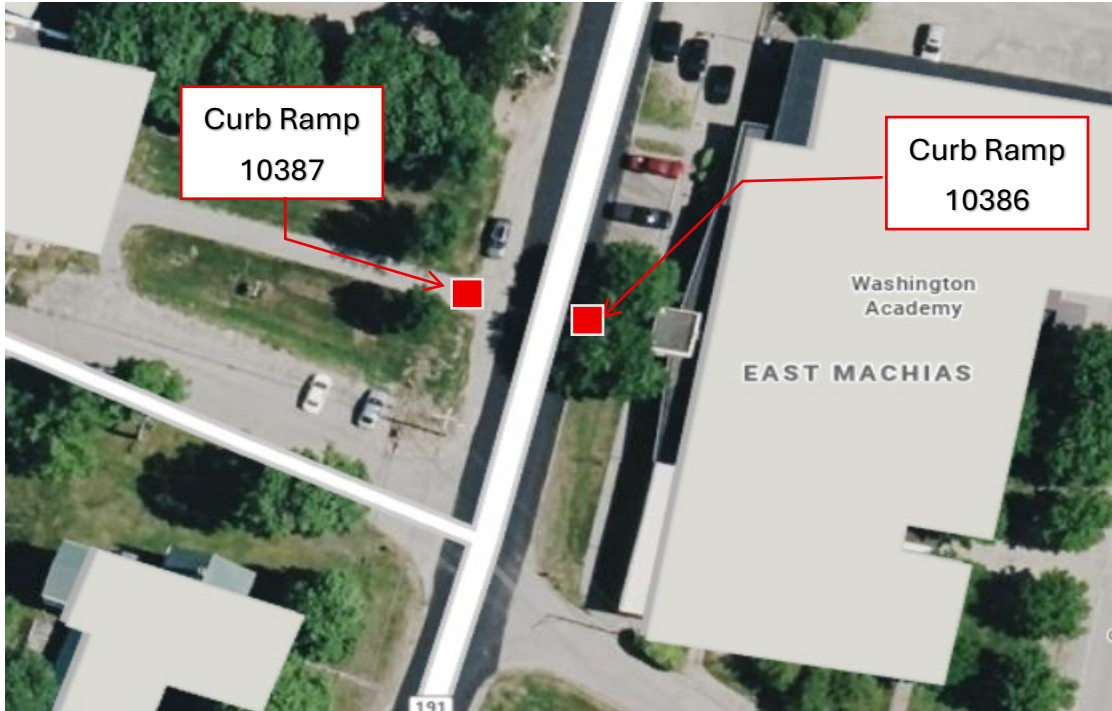


ADA Pedestrian Ramp Report



Route 191 (Cutler Road) Northwest (CR10386)

(44.734201, -67.389121)

Reconstruct Pedestrian Ramp

- Remove the first 3 existing concrete landings, approximately 12' x 5'
- Regrade the landing, approximately 12' x 5'
- Replace the concrete landing, approximately. 12' x 5'
- Install 12' x 2' Detectable Warning Fields
- Paint crosswalk across Route 191 between Asset ID's CR10386 and CR10387
- Install new Regulatory Pedestrian sign

Route 191 (Cutler Road) Southeast (CR10387)

(44.734264, -67.389211)

Construct New Pedestrian Ramp

- Detectable will be located behind where the grass meets the shoulder area
- Remove existing pavement on walkway, approximately 6.5' x 10'
- Regrade existing walkway, approximately 11' x 10', abutting the grass area
- Repave existing walkway, approximately 11' x 10'
- Install 8' x 2' Detectable Warning Field
- Install new Regulatory Pedestrian sign