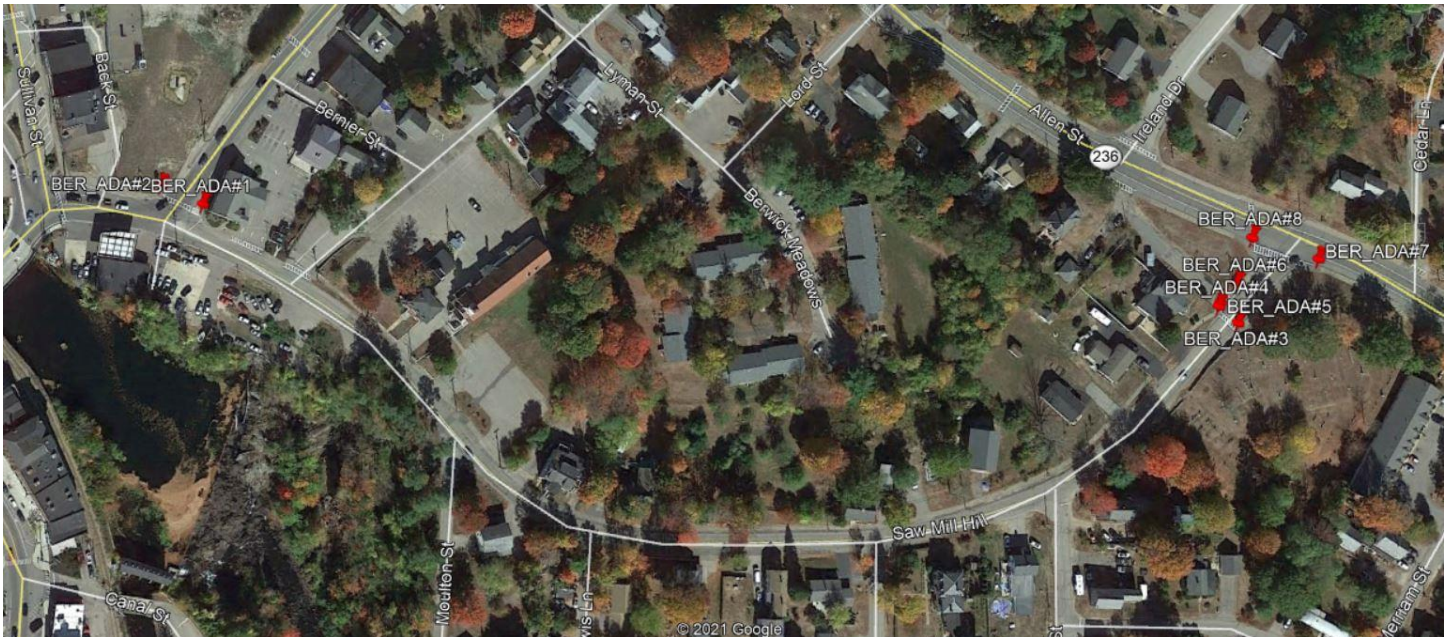


WIN 24813.00 Region 1 Pedestrian Ramp Report – 2022

Berwick, Sawmill Hill – School Street (Route 9) to Allen Street (Route 236)



BER_ADA#1

CR07436

Pedestrian Ramp on RT side of **School Street (Route 9) Crossing**.

- **Will be completed under WIN 24647.00**

Latitude 43.265927°

Longitude -70.863451°

BER_ADA#2

CR07435

- **Do Not Touch**

Latitude 43.265978°

Longitude -70.863672°

BER_ADA#3

TBD

Reconstruct Pedestrian Ramp on RT side of **Sawmill Hill Crossing at Bus Stop.**

- Remove and Replace 20 SF of bituminous sidewalk to widen turning area
- Grade, Loam and Seed 10' x 2' disturbed area
- Install crosswalk post and signs
- Install 10 SF of Detectable Warning Field (DWF)

Latitude 43.265924°
Longitude -70.858193°
Reference 801(27)

BER ADA#4

TBD

Reconstruct Pedestrian Ramp on LT side of **Sawmill Hill Crossing at Bus Stop.**

- Remove and Replace 10 LF of granite curb
- Remove and Replace 80 SF of bituminous sidewalk
- Move opening away from drive
- Grade, Loam and Seed 14' x 2' disturbed area
- Install 10 SF of Detectable Warning Field (DWF)

Latitude 43.265976°
Longitude -70.858342°
Reference 801(27)

BER ADA#5

TBD

Add DWF only to LT side of **Bus Stop Drive.**

- 10 SF of Detectable Warning Field (DWF)

Latitude 43.265992°
Longitude -70.858331°
Reference 801(22&27)

BER ADA#6

TBD

Reconstruct Pedestrian Ramp on RT side of **Bus Stop Drive.**

- Remove and Replace 18 LF of granite curb
- Remove and Replace 60 SF of bituminous sidewalk
- Grade, Loam and Seed 8' x 2' disturbed area

- Install 10 SF of Detectable Warning Field (DWF)

Latitude 43.266064°
Longitude -70.858268°
Reference 801(22)

BER ADA#7

TBD

Reconstruct Pedestrian Ramp on RT side of **Sawmill Hill Crossing at Allen Street (Route 236)**.

- Remove and Replace 180 SF of bituminous sidewalk to correct cross-slope
- Grade, Loam and Seed 80' x 2' disturbed area
- Install 12 SF of Detectable Warning Field (DWF)

Latitude 43.266185°
Longitude -70.857883°
Reference 801(20)

BER ADA#8

CR03518

Reconstruct Pedestrian Ramp on LT side of **Sawmill Hill Crossing at Allen Street (Route 236)**.

- Remove and Replace 120 SF of bituminous sidewalk to correct cross-slope
- Grade, Loam and Seed 20' x 2' disturbed area
- Install 16 SF of Detectable Warning Field (DWF)

Latitude 43.266234°
Longitude -70.858213°
Reference 801(20)

Berwick, Rochester Street @ Sweetser Street



BER_ADA#9

CR03517

Add DWF only to RT side of **Sweetser Street**.

- 10 SF of Detectable Warning Field (DWF)

Latitude 43.269432°
Longitude -70.868852°
Reference 801(22)

BER_ADA#10

CR03516

Add DWF only to LT side of **Sweetser Street**.

- 10 SF of Detectable Warning Field (DWF)

Latitude 43.269508°
Longitude -70.868985°
Reference 801(22)

Falmouth, Middle Road/Lunt Road



FAL ADA#1

CR07075

Reconstruct Pedestrian Ramp on LT side of **Middle Road**.

- Remove and Replace 20 LF of Bituminous Curb
- Repave 110 SF bituminous Sidewalk
- Grade, Loam and Seed 20' x 2' disturbed area
- Install 12 SF of Detectable Warning Field (DWF)

Latitude 43.724628°
Longitude -70.244209°
Reference 801(27)

FAL ADA#2

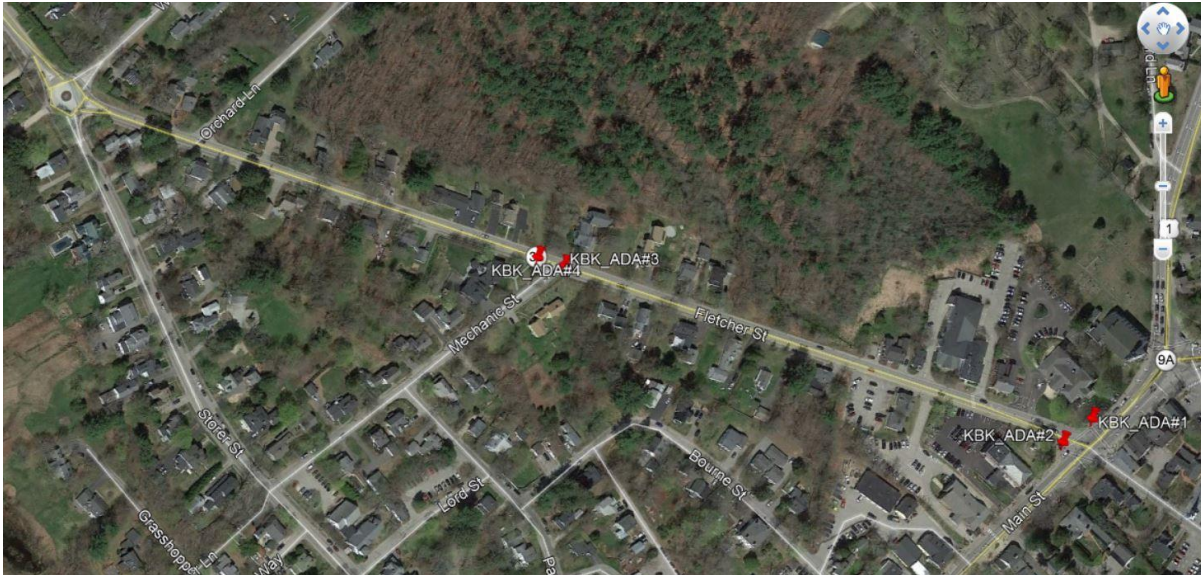
CR07076

Reconstruct Pedestrian Ramp on RT side of **Middle Road**.

- Remove and Replace 16 LF of Bituminous Curb
- Repave 100 SF bituminous Sidewalk
- Grade, Loam and Seed 20' x 2' disturbed area
- Install 12 SF of Detectable Warning Field (DWF)

Latitude 43.724628°
Longitude -70.244209°
Reference 801(22)

Kennebunk, Route 35 – Main Street to Roundabout



KBK_ADA#1

CR14269

Reconstruct Pedestrian Ramp on RT side of Fletcher Street at intersection of **Route 1 (Main Street)**.

- Remove and Replace 100 SF of bituminous sidewalk
- Grade, Loam and Seed 12' x 2' disturbed area
- Install 12 SF of Detectable Warning Field (DWF)

Latitude 43.387517°
Longitude -70.537776°
Reference 801(26)

KBK_ADA#2

CR16637

Add DWF only to LT side of Fletcher Street at intersection of **Route 1 (Main Street)**.

- Install 10 SF of Detectable Warning Field (DWF)
 - Cut extra width and replace 25 SF of bituminous sidewalk to create level landing

Latitude 43.387413°
Longitude -70.538054°
Reference 801(26)

KBK ADA#3

CR08766

Reconstruct Pedestrian Ramp on LT side of **Mechanic Street**.

- Remove and Replace 60 SF of bituminous sidewalk
- Grade, Loam and Seed 12' x 2' disturbed area
- Install 10 SF of Detectable Warning Field (DWF)

Latitude 43.389000°
Longitude -70.541810°
Reference 801(22)

KBK ADA#4

CR08767

RT side of **Mechanic Street** recently upgraded by the town.

- Ok As-is

Latitude 43.389081°
Longitude -70.542011°

Limerick, Route 11 – Main Street (Route 5) to Maple Street



LIM ADA#1

TBD

Add DWF only to LT side of **Washington Street (Route 11) at Main Street (Route 5)**.

- Install 10 SF of Detectable Warning Field (DWF)

Latitude 43.688526°
Longitude -70.794825°
Reference 801(22)

LIM ADA#2

TBD

Reconstruct Pedestrian Ramp on RT side of **Washington Street (Route 11) at Main Street (Route 5)**.

- Remove and Replace 80 SF of PCC sidewalk to correct cross slope
- Grade, Loam and Seed 14' x 2' disturbed area
- Install 10 SF of Detectable Warning Field (DWF)

Latitude 43.688346°
Longitude -70.794686°
Reference 801(20)

LIM ADA#3

CR07736

Reconstruct Pedestrian Ramp on RT side of **John and Marie Drive**.

- Remove and Replace 30 SF of PCC sidewalk to correct cross slope
- Grade, Loam and Seed 6' x 2' disturbed area
- Install 10 SF of Detectable Warning Field (DWF)

Latitude 43.694759°
Longitude -70.790414°
Reference 801(22)

LIM ADA#4

CR07735

Reconstruct Pedestrian Ramp on LT side of **John and Marie Drive**

- Remove and Replace 30 SF of PCC sidewalk to correct cross slope
- Grade, Loam and Seed 6' x 2' disturbed area
- Install 10 SF of Detectable Warning Field (DWF)

Latitude 43.694884°
 Longitude -70.790237°
 Reference 801(22)

LIM ADA#5

CR07738

Reconstruct Pedestrian Ramp on RT side of **Wescott Street**.

- Remove and Reset 16 LF of granite curb
- Remove and Replace 100 SF of concrete sidewalk
- Grade, Loam and Seed 20' x 2' disturbed area
- Install 10 SF of Detectable Warning Field (DWF)

Latitude 43.696226°
 Longitude -70.788057°
 Reference 801(22)

LIM ADA#6

CR07739

Reconstruct Pedestrian Ramp on LT side of **Wescott Street**.

- Remove and Reset 16 LF of granite curb
 - Remove radius terminal end and replace with straight
- Remove and Replace 100 SF of concrete sidewalk
- Grade, Loam and Seed 20' x 2' disturbed area
- Install 10 SF of Detectable Warning Field (DWF)

Latitude 43.696319°
 Longitude -70.787955°
 Reference 801(22)

LIM ADA#7

TBD

Reconstruct Pedestrian Ramp on RT side of **Maple Street**.

- Remove and Reset 16 LF of granite curb
- Remove and Replace 100 SF of concrete sidewalk
- Grade, Loam and Seed 20' x 2' disturbed area

- Install 10 SF of Detectable Warning Field (DWF)

Latitude 43.696856°
 Longitude -70.787303°
 Reference 801(22)

LIM ADA#8

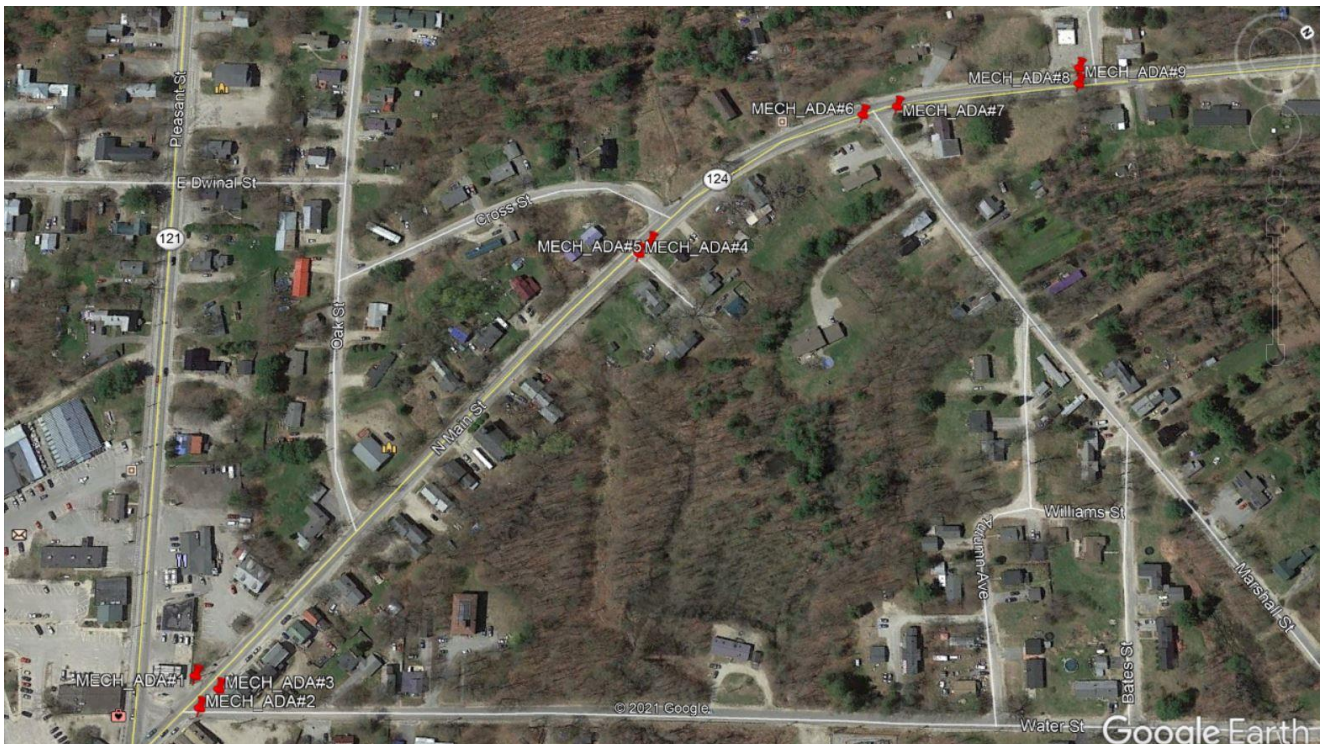
TBD

Reconstruct Pedestrian Ramp on LT side of **Maple Street**.

- Remove and Reset 16 LF of granite curb
- Remove and Replace 120 SF of concrete sidewalk, including walkway to match
- Grade, Loam and Seed 26' x 2' disturbed area
- Install 10 SF of Detectable Warning Field (DWF)

Latitude 43.696948°
 Longitude -70.787219°
 Reference 801(22)

Mechanic Falls, Route 124 – Water Street to Clifford Street



MECH ADA#1

CR10043

Construct New Pedestrian Ramp on LT side of **N. Main Street (Route 124) Crossing at Water Street**

- Remove and Replace 16 LF of bituminous curb on RT side of Cumberland Farms entrance
 - Shorten curb to widen entrance
- Construct 16' x 5' bituminous sidewalk/landing area
- Grade, Loam and Seed 16' x 2' disturbed area
- Install crosswalk post and signs
- Install 10 SF of Detectable Warning Field (DWF)

Latitude 44.111756°
Longitude -70.392242°
Reference 801(27)

MECH ADA#2

CR10044

Reconstruct Pedestrian Ramp on RT side of **Water Street**

- Remove and Replace 300 SF of bituminous sidewalk
- Add 4 LF granite terminal end on other side of pole
- 12 SF of Detectable Warning Field (DWF)
- Adjacent building may make this Technically Infeasible to get to 100% compliance

Latitude 44.111696°
Longitude -70.392050°
Reference 801(22)

MECH ADA#3

CR10045

Reconstruct Pedestrian Ramp on LT side of **Water Street** and RT side of **N. Main Street (Route 124) Crossing**

- Remove and Reset 20 LF of bituminous curb
- Add 10 LF of bituminous curb on Water Street for slope retention
- Remove and Replace 100 SF of bituminous sidewalk
- Grade, Loam and Seed 12' x 2' disturbed area
- Install crosswalk post and signs
- 20 SF of Detectable Warning Field (DWF)

Latitude 44.111825
Longitude -70.392084
Reference 801(27)

MECH ADA#4

CR15898

Add DWF only to RT side of **Benson Court**

- 10 SF of Detectable Warning Field (DWF)

Latitude 44.114639°
Longitude -70.392974°
Reference 801(22)

MECH ADA#5

CR15900

Add DWF only to LT side of **Benson Court**

- 10 SF of Detectable Warning Field (DWF)

Latitude 44.114719°
Longitude -70.392994°
Reference 801(22)

MECH ADA#6

CR10048

Reconstruct Pedestrian Ramp on RT side of **Marshall Street**

- Remove and Reset 10 LF of bituminous curb, extend terminal end
- Remove and Replace 60 SF of bituminous sidewalk to correct cross slope
- Grade, Loam and Seed 12' x 2' disturbed area
- 10 SF of Detectable Warning Field (DWF)

Latitude 44.115981°
Longitude -70.392921°
Reference 801(22)

MECH ADA#7

CR10049

Reconstruct Pedestrian Ramp on LT side of **Marshall Street**

- Remove and Replace 10 LF of bituminous curb, extend terminal end
- Remove and Replace 60 SF of bituminous sidewalk
- Grade, Loam and Seed 12' x 2' disturbed area
- 10 SF of Detectable Warning Field (DWF)

Latitude 44.116151°
Longitude -70.392836°
Reference 801(22)

MECH ADA#8

CR15897

Reconstruct Pedestrian Ramp on RT side of **N. Main Street (Route 124) Crossing at Clifford Street**

- Remove and Replace 50 SF of bituminous sidewalk
- Install crosswalk post and signs
- Grade, Loam and Seed 12' x 2' disturbed area
- 12 SF of Detectable Warning Field (DWF)

Latitude 44.116994°
Longitude -70.392252°
Reference 801(27)

MECH ADA#9

CR14175

Construct New Pedestrian Ramp on LT side of **N. Main Street (Route 124) Crossing at Clifford Street**

- Add 25 LF of new bituminous curb
- Construct 130 SF of new bituminous sidewalk
- Grade, Loam and Seed 25' x 2' disturbed area
- Install crosswalk post and signs
- 12 SF of Detectable Warning Field (DWF)

Latitude 44.117047°
Longitude -70.392346°
Reference 801(13)

North Yarmouth, Route 115 – Cumberland Road to Memorial Highway



NYAR_ADA#1

CR07105

To be done by Town

Latitude 43.823962°
Longitude -70.246661°

NYAR_ADA#2

CR07104

To be done by Town

Latitude 43.824238°
Longitude -70.246776°

NYAR ADA#3

TBD

Ok As-is

Latitude 43.827102°
Longitude -70.247811°

NYAR ADA#4

TBD

Ok As-is

Latitude 43.827169°
Longitude -70.247646°

NYAR ADA#5

CR13546

Reconstruct Pedestrian Ramp on LT side of **Walnut Hill Road (Rte. 115) Crossing near Memorial Highway (Rte. 9)**.

- Remove and Replace 110 SF of bituminous sidewalk to create level landing area and correct cross-slope
- 10 SF of Detectable Warning Field (DWF)
- Grade, Loam and Seed 20' x 2' disturbed area
- RRFB wires?

Latitude 43.827887°
Longitude -70.248535°
Reference 801(13)

NYAR ADA#6

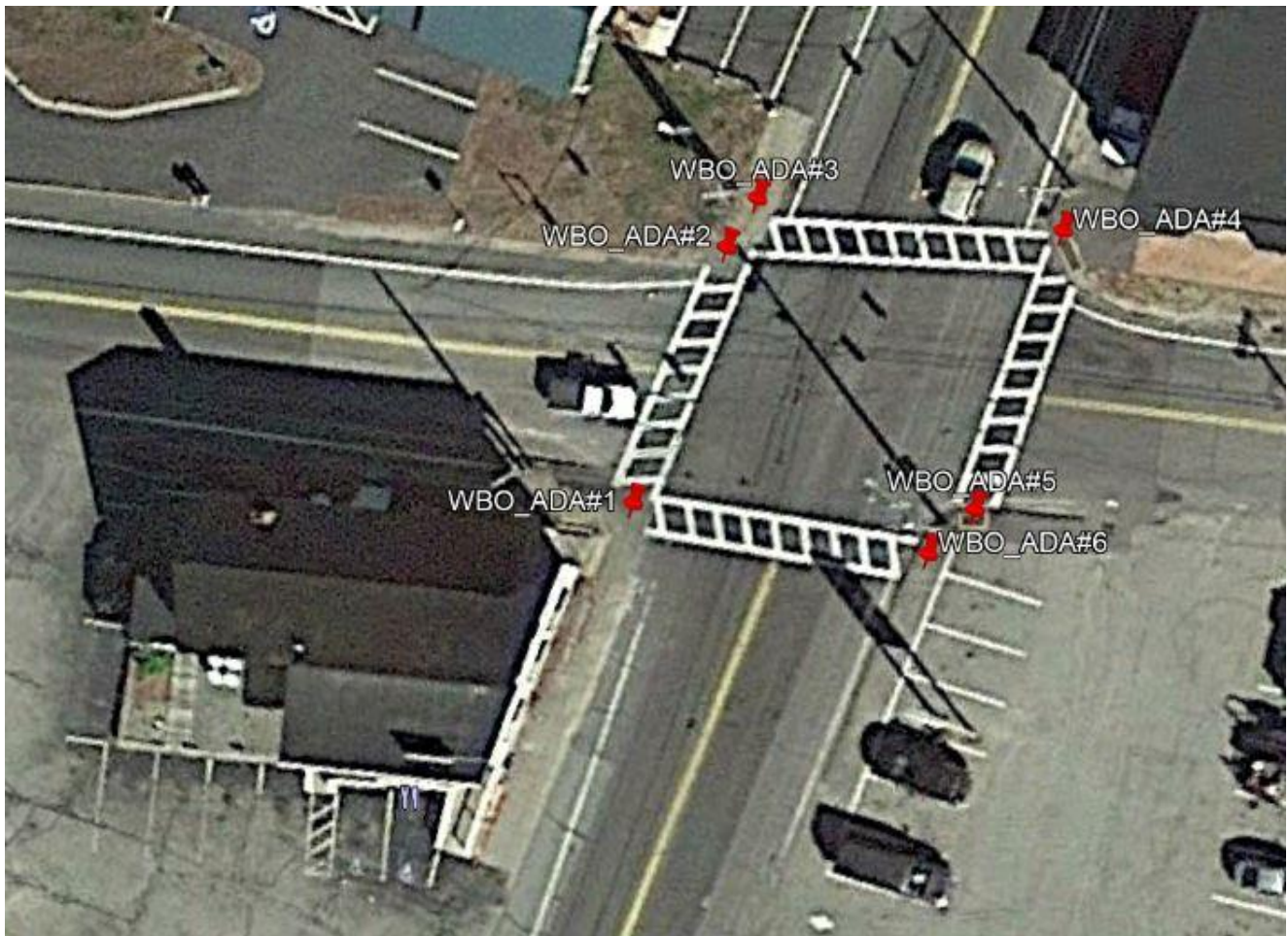
CR13547

Add DWF only to RT side of **Walnut Hill Road (Route 115) Crossing near Memorial Highway (Route 9).**

- 10 SF of Detectable Warning Field (DWF)
- RRFB Wires?

Latitude 43.827949°
Longitude -70.248425°
Reference 801(13)

Waterboro, Route 202 – Main St. (Route 202)/West Rd./Goodwins Mill Rd.



WBO_ADA#1

CR11269

Reconstruct Pedestrian Ramp on LT side of **West Road.**

- Saw cut and remove bottom step
 - DO NOT REMOVE TOP STEP/FOUNDATION
- Remove and Replace 65 LF of bituminous curb

- Remove and Replace 320 SF of bituminous sidewalk
- Install 60 LF of new bituminous curb along Main Street
- Construct 450 SF of new bituminous sidewalk along Main Street (currently HMA)
- Possible 2 separate openings depending upon subsurface findings
- 36 SF of Detectable Warning Field (DWF)

Latitude 43.535906°
 Longitude -70.714731°
 Reference 801(16)

WBO ADA#2

CR11268

Reconstruct Pedestrian Ramp on RT side of **West Road**.

- Install 16 LF of new bituminous curb
- Remove and Replace 100 SF of bituminous sidewalk
- 12 SF of Detectable Warning Field (DWF)

Latitude 43.536008°
 Longitude -70.714656°
 Reference 801(14)

WBO ADA#3

N/A

Construct Pedestrian Ramp on LT side of **Main Street (Route 202) Crossing at West Road to Goodwins Mills Road**

- Install 10 LF of new bituminous curb
- Remove and Replace 50 SF of bituminous sidewalk
- Grade, Loam and Seed 12' x 2' disturbed area
- 10 SF of Detectable Warning Field (DWF)

Possibly combine #2 & #3 into one opening

Latitude 43.536029°
 Longitude -70.714632°
 Reference 801(14)

WBO ADA#4

CR11267

Reconstruct Pedestrian Ramp on LT side of **Goodwins Mill Road**.

- Install 45 LF of new bituminous curb along Goodwins Mill Road
- Remove and Replace 500 SF of bituminous sidewalk
 - Includes some brick pavers to remove only

- Add 450 SF of HMA esplanade/walking area behind new curb
- 16 SF of Detectable Warning Field (DWF)
- Grade sidewalk area to create a level (2.0%) landing area between 8% slopes.

Latitude 43.535995°
 Longitude -70.714441°
 Reference 801(22)

WBO ADA#5

CR11266

Reconstruct Pedestrian Ramp on RT side of **Goodwins Mill Road**.

- Remove and Replace 16 LF of new bituminous curb
- Remove and Replace 100 SF of bituminous sidewalk
- 12 SF of Detectable Warning Field (DWF)

Latitude 43.535873°
 Longitude -70.714519°
 Reference 801(15)

WBO ADA#6

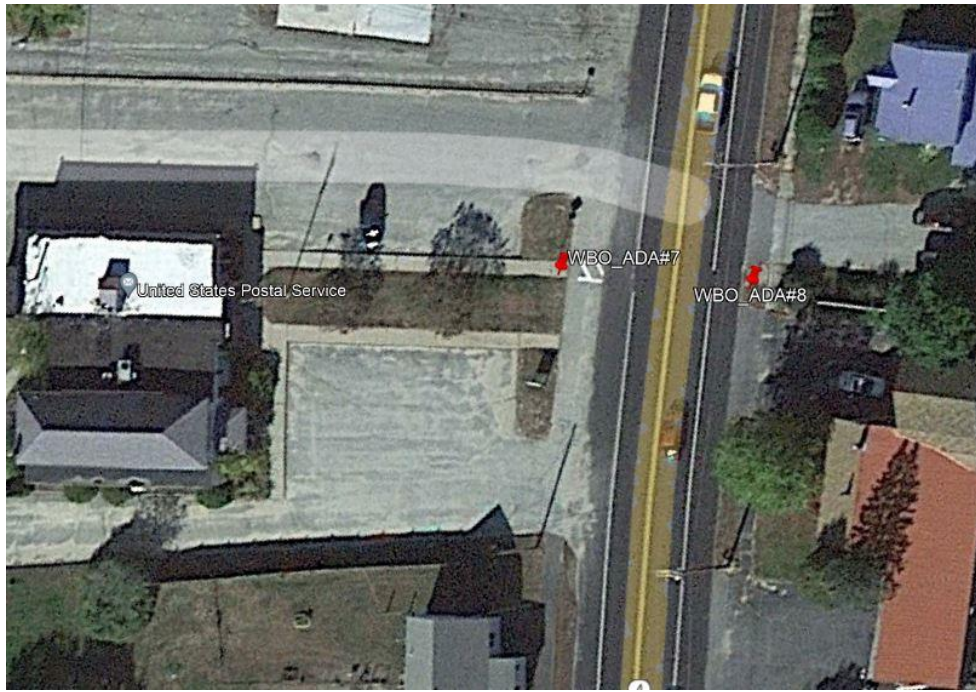
CR12425

Reconstruct Pedestrian Ramp on RT side of **Main Street (Route 202) Crossing at Goodwins Mill to West Road**

- Remove and Replace 18 LF of new bituminous curb to create new opening
- Remove and Replace 100 SF of bituminous sidewalk
- 12 SF of Detectable Warning Field (DWF)

Latitude 43.535856°
 Longitude -70.714552°
 Reference 801(15)

Waterboro, Route 202 – Main St. (Route 202) Crossing @ Post Office



WBO ADA#7

TBD

Add DWF only to LT side of **Main Street (Routes 4/202) Crossing at Post Office**

- 10 SF of Detectable Warning Field (DWF)

Latitude 43.532071°
Longitude -70.718315°
Reference 801(22)

WBO ADA#8

TBD

Construct Pedestrian Ramp on RT side of **Main Street (Routes 4/202) Crossing at Post Office**

- Remove 6 LF of bituminous curb
- Construct 30 SF of bituminous sidewalk
- 12 SF of Detectable Warning Field (DWF)

Latitude 43.531999°
Longitude -70.718114°
Reference 801(15)

Waterboro, West Road – Massabesic High School to Ricker Lane



WAT ADA#1

TBD

Reconstruct Pedestrian Ramp on LT side **Massabesic High School Entrance**.

- Remove and Replace 8 LF of Bituminous Curb
- Remove and Replace 40 SF of bituminous sidewalk
- Grade, Loam and Seed 10 x 2' disturbed area
- 10 SF of Detectable Warning Field (DWF)

Latitude 43.537287°
Longitude -70.722487°
Reference 801(20)

WAT ADA#2

TBD

Construct Pedestrian Ramp on RT side of **Ricker Lane**

- Remove and Replace 8 LF of bituminous curb
- Remove and Replace 48 SF bituminous sidewalk
- 10 SF of Detectable Warning Field (DWF)

Latitude 43.536485°
Longitude -70.717871°
Reference 801(20)

WAT ADA#3

CR14163

Reconstruct Pedestrian Ramp on LT side of **Ricker Lane**.

- Remove and Replace 8 LF of Bituminous Curb
- Remove and Replace 40 SF of bituminous sidewalk
- Grade, Loam and Seed 10' x 2' disturbed area
- 10 SF of Detectable Warning Field (DWF)

Latitude 43.536465°
Longitude -70.717775°
Reference 801(13)