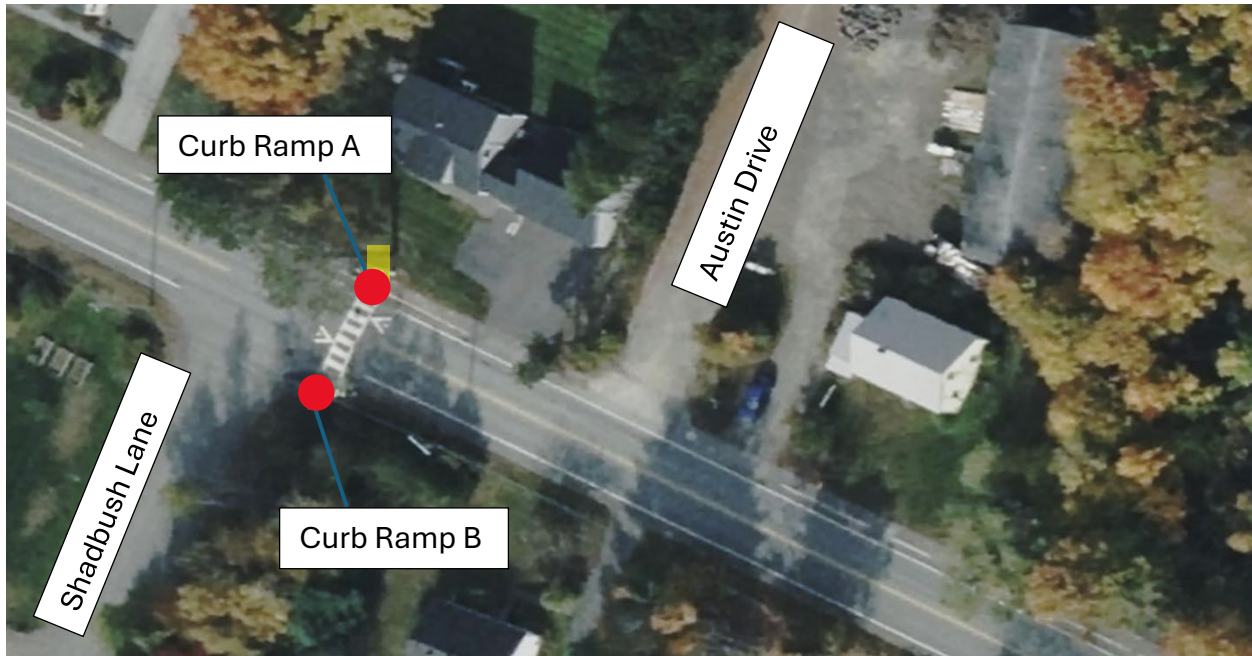


ADA Pedestrian Ramp Report



**Forest Avenue and Shadbush Lane**

**CURB RAMP A**

- Reference Standard Details 801 (14), Midblock Crossing, Parallel Ramp.
- Existing curb will remain.
- Remove existing pavement and Re-grade approximately 25' by 5' of sidewalk.
- Install 7' by 2' Detectable Warning Field.

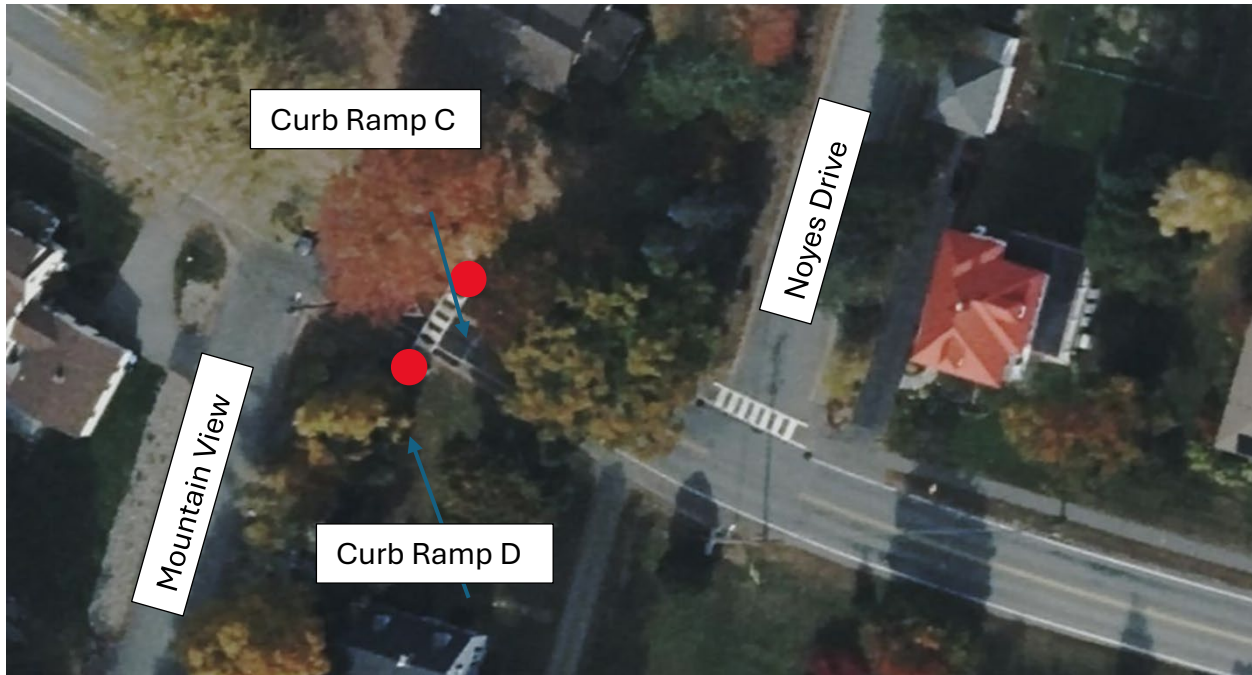
Latitude: 44.887642  
Longitude: -68.685743

**CURB RAMP B**

- Reference Standard Details 801 (20), Parallel Curb Ramp, Option 3
- Remove existing pavement and Re-grade approximately 30' by 5' of sidewalk.
- Place approximately 25' of new bituminous curb.
- Install 5' by 2' Detectable Warning Field.

Latitude: 44.887552  
Longitude: -68.685781

## ADA Pedestrian Ramp Report



### Forest Avenue and Mountain View Drive

#### CURB RAMP C

- Reference Standard Details 801 (14).
- Remove approximately 20' of existing concrete and granite curb.
- Remove existing pavement and Re-grade approximately 30' by 5' of sidewalk.
- Place approximately 25' of Slipform Concrete Curb.
- Install 5' by 2' Detectable Warning Field.

Latitude: 44.884996  
Longitude: -68.679011

#### CURB RAMP D

- Reconstruct paved walkway and level landing area.
- Remove existing pavement and Re-grade approximately 15' by 5' of walkway.
- Install 6' x 2' Detectable Warning Field.
- Install Slipform Curb type 3.

Latitude: 44.884944  
Longitude: -68.679069