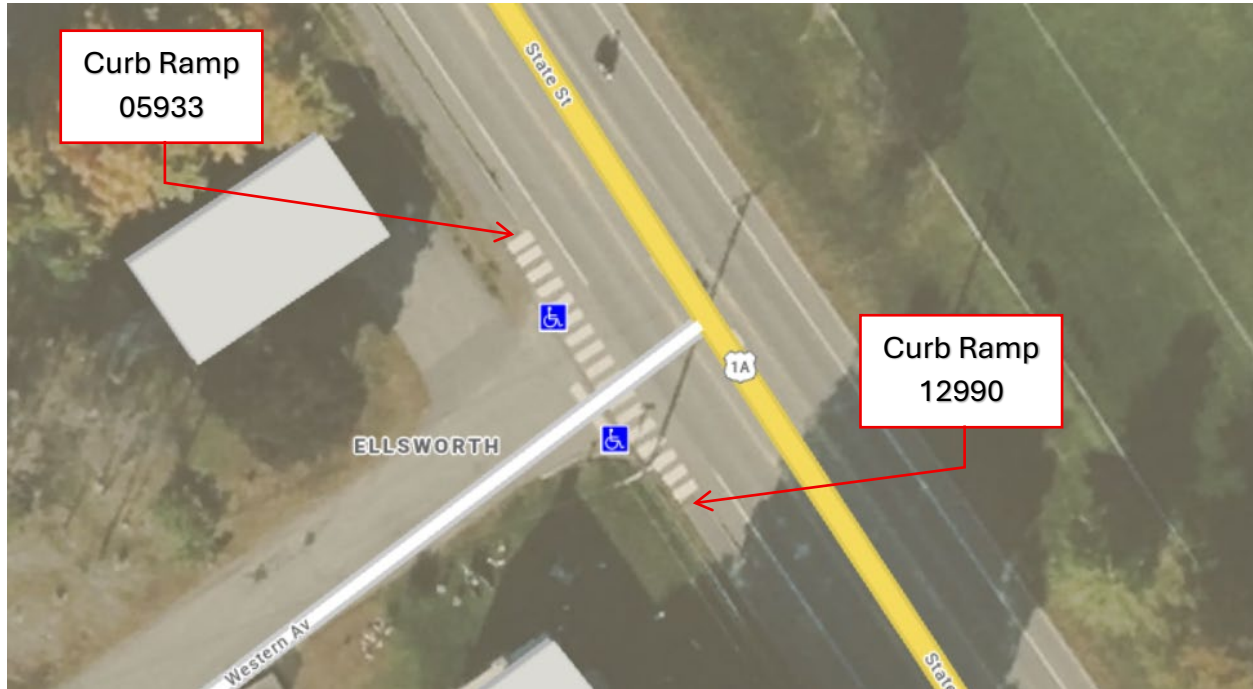


ADA Pedestrian Ramp Report



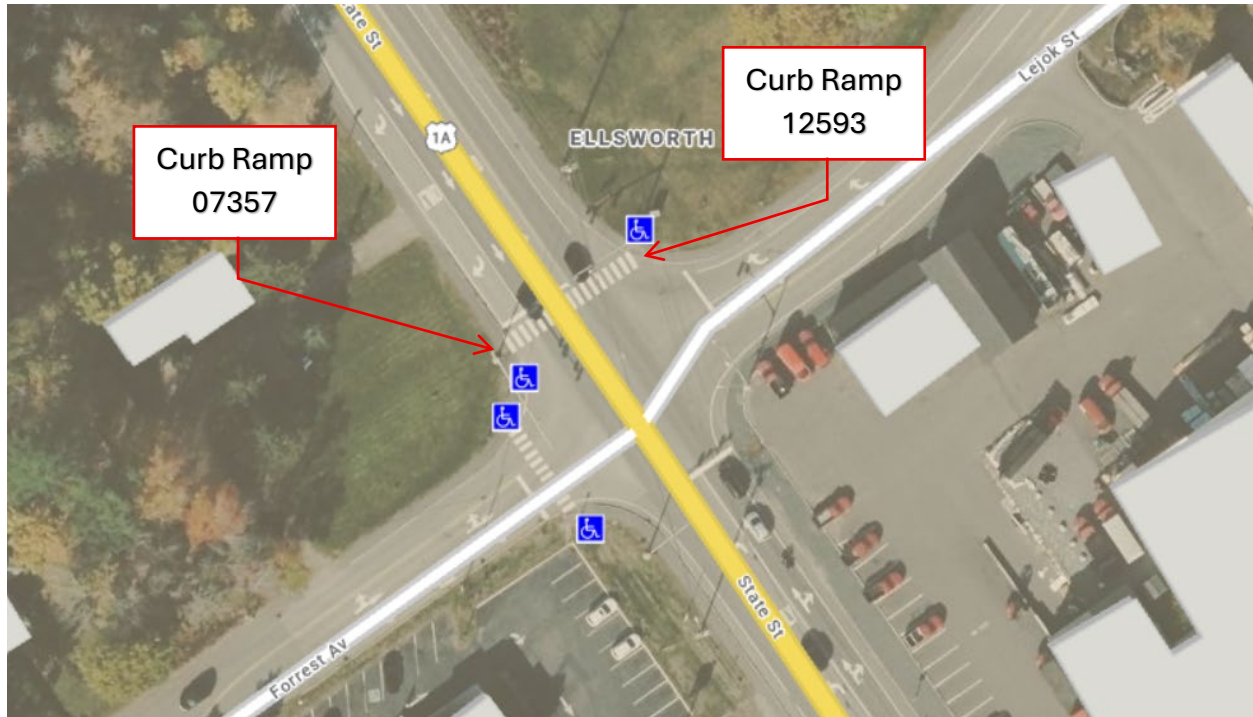
US Route 1A (State Street) & Western Ave. (CR05933) – Sta. 1340+86 Rt. (44.555371, -8.43212)

- Reconstruct similar to Standard Detail 801 (22).
- Regrade existing sidewalk approx. 15' x 5'.
- Repave existing sidewalk approx. 15' x 5'.
- Install 5' x 2' Detectable Warning Field.
- Install new 8' Vertical Curb type 1.
- Reset Terminal Curb Type 1.
- Paint crosswalk across Western Avenue between Asset ID's CR05933 and CR12990.

US Route 1A (State Street) & Western Ave. (CR12990) – Sta. 1341+25 Rt. (44.555301, -68.432073)

- Reconstruct similar to Standard Detail 801(22).
- Regrade existing sidewalk approx. 15' x 5'.
- Repave existing sidewalk approx. 15' x 5'.
- Install 5' x 2' Detectable Warning Field.
- Install new 8' Vertical Curb type 1.
- Reset Terminal Curb Type 1.

ADA Pedestrian Ramp Report



US Route 1A (State Street) & Forrest Ave. (CR07357) – Sta. 1351+04 Rt. (44.553036, -68.429873)

- Reconstruct similar to Standard Detail 801 (14).
- Regrade existing sidewalk approx. 21' x 5'.
- Repave existing sidewalk approx. 21' x 5'.
- Install 5' x 2' Detectable Warning Field.
- Reset Terminal Curb Type 1.
- Paint crosswalk across Western Avenue between Asset ID's CR07357 and CR12593.

US Route 1A (State Street) & Lejok Street (CR12593) – Sta. 1351+04 Lt. (44.553211, -68.429675)

- Reconstruct similar to Standard Detail 801 (20).
- Regrade existing sidewalk approx. 21' x 5'.
- Repave existing sidewalk approx. 21' x 5'.
- Install 5' x 2' Detectable Warning Field.
- Reset Terminal Curb Type 1.