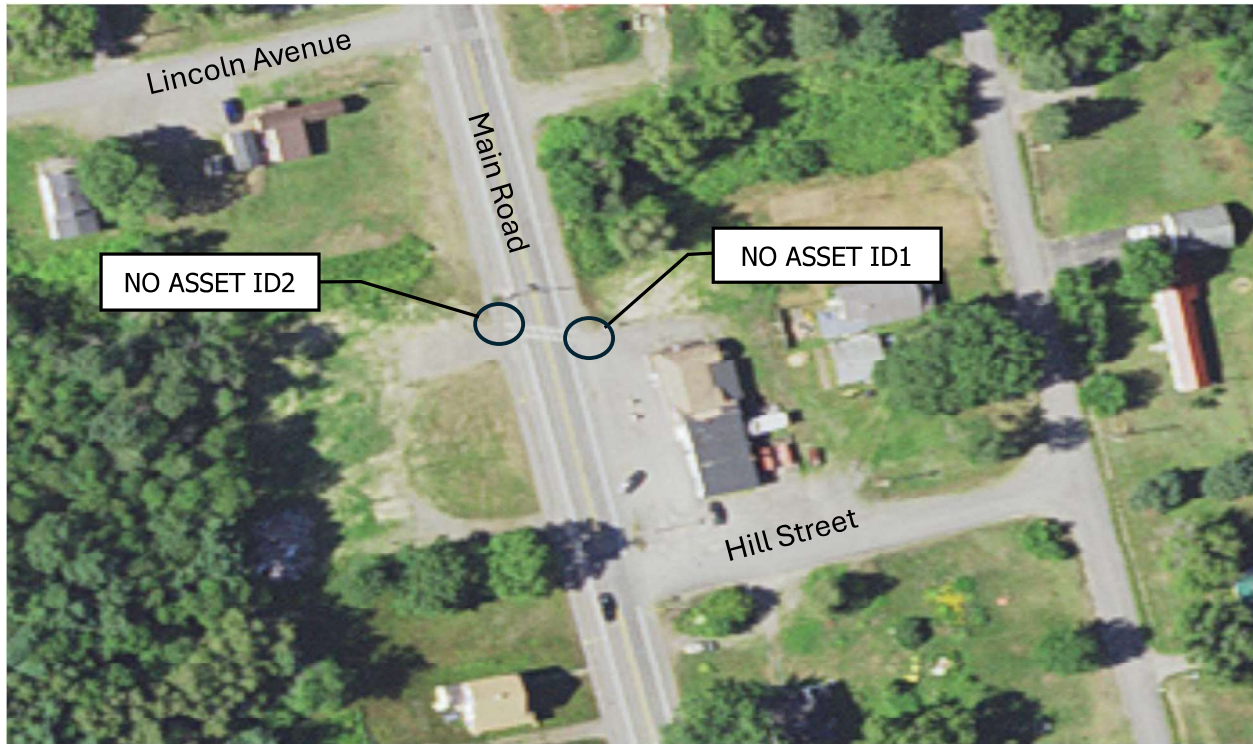


WIN 28846.00 Brownville ADA Pedestrian Ramp Report



Main Road / Triple Goddess Shop (NO ASSET ID1)

Reconstruct Pedestrian Ramp

- Remove Existing pavement on sidewalk approx. 5' x 5'.
- Regrade existing sidewalk approx. 5' x 5'.
- Repave existing sidewalk approx. 5' x 5'.
- Install 5' x 2' Detectable warning Fields.

Latitude: 45.345839,

Longitude: -69.051947

West Side of Main Road

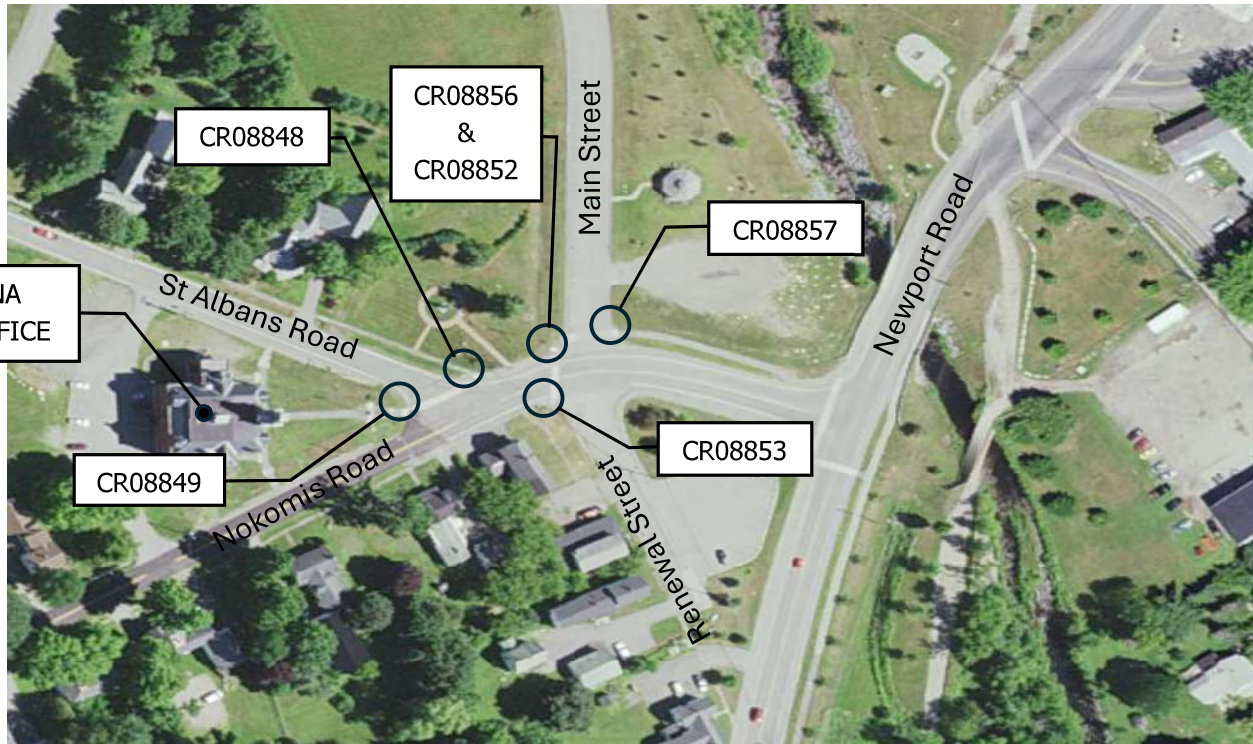
Reconstruct Pedestrian Ramp

- Reconstruct similar to Standard Details 801 (27).
- Remove Existing pavement on sidewalk approx. 10' x 5'.
- Regrade existing sidewalk approx. 10' x 5'.
- Repave existing sidewalk approx. 10' x 5'.
- Install 5' x 2' Detectable warning Fields.
- Install new curb Type 3 approx. 10'.
- Repaint crosswalk across Main Road between No Asset ID's 1 and 2.

Latitude: 45.345868

Longitude: -69.052137

WIN 28846.00 Corinna ADA Pedestrian Ramp Report



Main Street/St. Albans Road East (CR08857)

Reconstruct Pedestrian Ramp

- Reconstruct similar to Standard Details 801 (27).
- Remove Existing pavement on sidewalk approx. 15' x 5'.
- Regrade existing sidewalk approx. 15' x 5'.
- Repave existing sidewalk approx. 15' x 5'.
- Install 5' x 2' Detectable warning Fields.
- Repaint crosswalk across Main Street Between Asset ID's CR08857 and CR08856.

Latitude: 44.921135
Longitude: -69.261174

Main Street/St. Albans Road North (CR08856) & St. Albans Road/Renewal Street North (CR08852)

Reconstruct Pedestrian Ramp

- Reconstruct similar to Standard Details 801 (16). Do make 2 different landings with an in-between apex.
- Remove Existing pavement on sidewalk approx. 30' x 5'.
- Regrade existing sidewalk approx. 30' x 5' and shoulder approx. 16' x 2'.
- Repave existing sidewalk approx. 30' x 5' and existing shoulder 16' x 2'.
- Install 5' x 2' Detectable warning Fields each landing.
- Install Terminal 8' Curb type 1.

Latitude: 44.921136, 44.921084
Longitude: -69.261362, -69.261398

St. Albans Road / Renewal Street South
(CR08853)

Reconstruct Pedestrian Ramp

- Reconstruct similar to Standard Details 801 (20).
- Remove Existing pavement on sidewalk approx. 25' x 5'.
- Regrade existing sidewalk approx. 25' x 5' and shoulder approx. 16' x 2'.
- Repave existing sidewalk approx. 25' x 5' and existing shoulder 16' x 2'.
- Install 5' x 2' Detectable warning Fields.
- Repaint crosswalk across St Albans Road between Asset ID's CR08852 and CR08853.

Latitude: 44.920948
Longitude: -69.261390

Nokomis Road / St. Albans Road North
(CR08848)

Reconstruct Pedestrian Ramp

- Remove Existing pavement on sidewalk approx. 5' x 5'.
- Regrade existing sidewalk approx. 5' x 5'
- Repave existing sidewalk approx. 5' x 5'.
- Install 5' x 2' Detectable warning Fields each landing.
- Repaint crosswalk across St Albans Road between Asset ID's CR08848 and CR08849.
- Install new Regulatory Pedestrian Sign

Latitude: 44.921012
Longitude: -69.261652

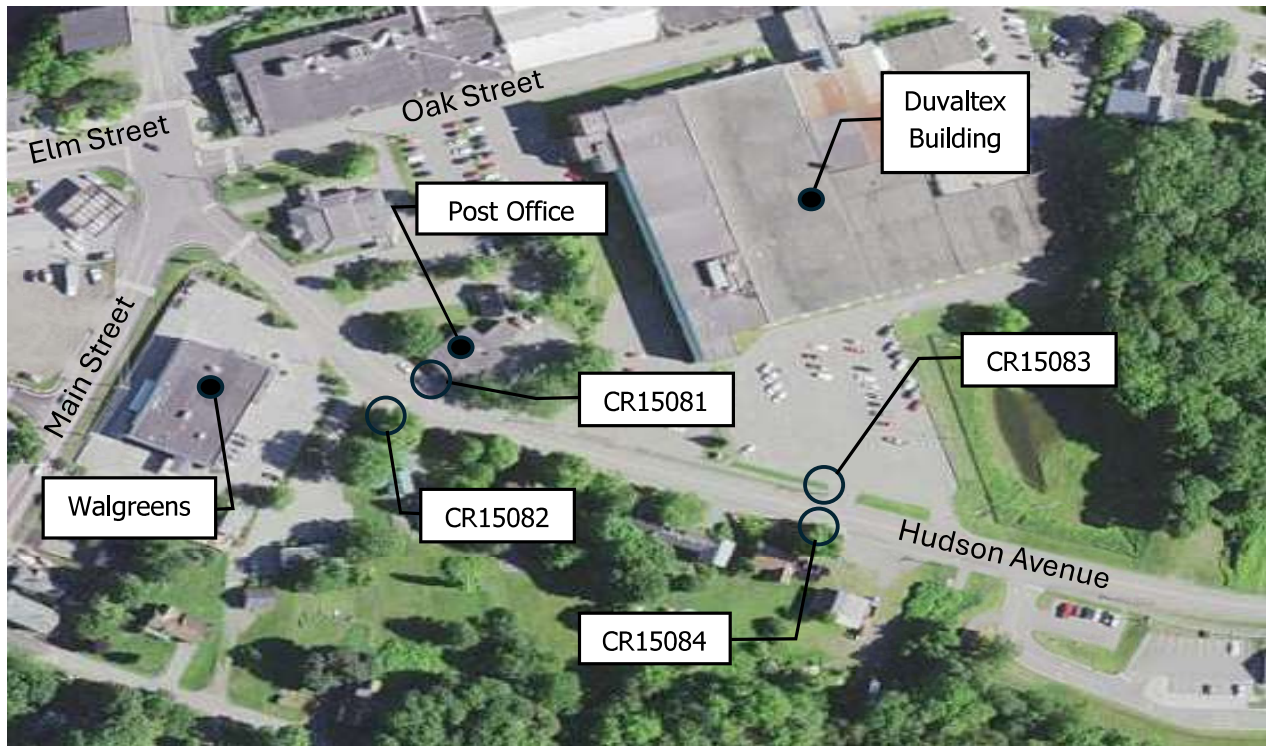
Nokomis Road / St. Albans Road South
(CR08849)

Reconstruct Pedestrian Ramp

- Remove Existing pavement on sidewalk approx. 5' x 5'.
- Regrade existing sidewalk approx. 5' x 5'
- Repave existing sidewalk approx. 5' x 5'.
- Install 5' x 2' Detectable warning Fields each landing.
- Install new Regulatory Pedestrian Sign

Latitude: 44.920919
Longitude: -69.261868

WIN 28846.00 Guilford ADA Pedestrian Ramp Report



Hudson Avenue at Post Office (CR15081)

Reconstruct Pedestrian Ramp

- Remove Existing pavement on sidewalk approx. 25' x 5'.
- Regrade existing sidewalk approx. 25' x 5' and shoulder approx. 16' x 2'.
- Repave existing sidewalk approx. 25' x 5' and existing shoulder 16' x 2'.
- Install 5' x 2' Detectable warning Fields.
- Reset 16' curb type 1.
- Paint crosswalk across Hudson Avenue Between Asset ID's CR15081 and CR15082.
- Install new Regulatory Pedestrian Sign.

Latitude: 45.166682
Longitude: -69.384753

Hudson Avenue Across Post Office (CR15082)

Reconstruct Pedestrian Ramp

- Reconstruct similar to Standard Details 801 (27).
- Remove Existing pavement on sidewalk approx. 20' x 5'.
- Regrade existing sidewalk approx. 20' x 5' and shoulder approx. 16' x 2'.
- Repave existing sidewalk approx. 20' x 5' and existing shoulder 16' x 2'.
- Install 5' x 2' Detectable warning Fields.
- Reset 16' curb type 1.
- Install new Regulatory Pedestrian Sign.

Latitude: 45.166581
Longitude: -69.384901

Hudson Avenue North (CR15083)

Relocate/Reconstruct Pedestrian Ramp

- Relocate the Pedestrian ramp further up the existing sidewalk, avoiding the existing pole.
- Reconstruct similar to Standard Details 801 (23).
- Remove Existing Pavement on sidewalk approx. 25' x 5'.
- Regrade existing sidewalk approx. 25' x 5' and shoulder approx. 21' x 2'.
- Repave existing sidewalk approx. 25' x 5' and existing shoulder 21' x 2'.
- Install 5' x 2' Detectable warning Fields.
- Reset 21' curb type 1.
- Remove and abandon existing crosswalk paint.
- Paint a new crosswalk across the new ramp at Hudson Avenue between Asset ID's CR15083 and CR15084.
- Install new Regulatory Pedestrian Sign.

Latitude: 45.166192
Longitude: -69.383298

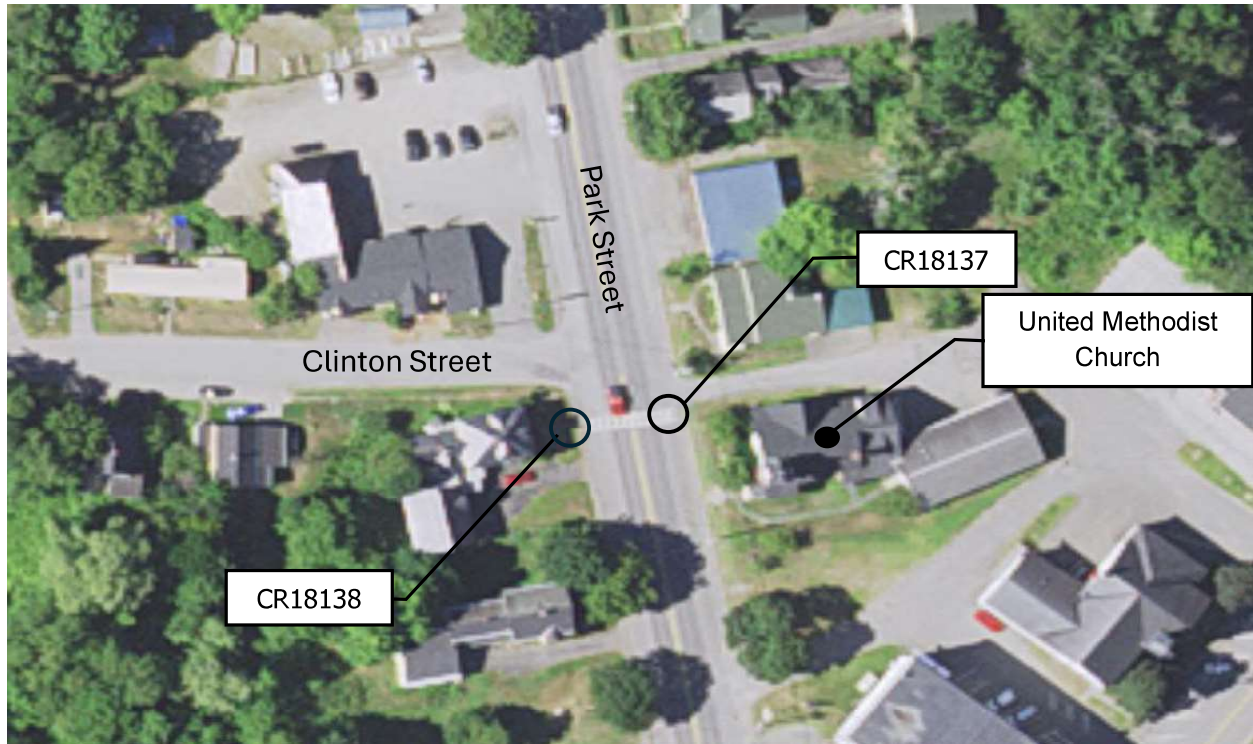
Hudson Avenue South (CR15084)

Relocate/Reconstruct Pedestrian Ramp

- Relocate the Pedestrian ramp just across CR15083
- Reconstruct similar to Standard Details 801 (14).
- Remove Existing Pavement on sidewalk approx. 25' x 5'.
- Regrade existing sidewalk approx. 25' x 5' and shoulder approx. 16' x 2'.
- Repave existing sidewalk approx. 25' x 5' and existing shoulder 16' x 2'.
- Install 5' x 2' Detectable warning Fields.
- Install new Regulatory Pedestrian Sign.

Latitude: 45.16633
Longitude: -69.383296

WIN 28846.00 Milo ADA Pedestrian Ramp Report



Park Street Across from Clinton Street (CR18137)

Reconstruct Pedestrian Ramp

- Reconstruct similar to Standard Details 801 (27).
- Remove Existing pavement and DWF on sidewalk approx. 10' x 5'.
- Regrade existing sidewalk approx. 10' x 5'.
- Repave existing sidewalk approx. 10' x 5'.
- Install 5' x 2' Detectable warning Fields.
- Install new curb type 3 approx. 10'.
- Paint crosswalk across Park Street Between Asset ID's CR18137 and CR18138.
- Install new Pedestrian Sign

Latitude: 45.254395
Longitude: -68.986462

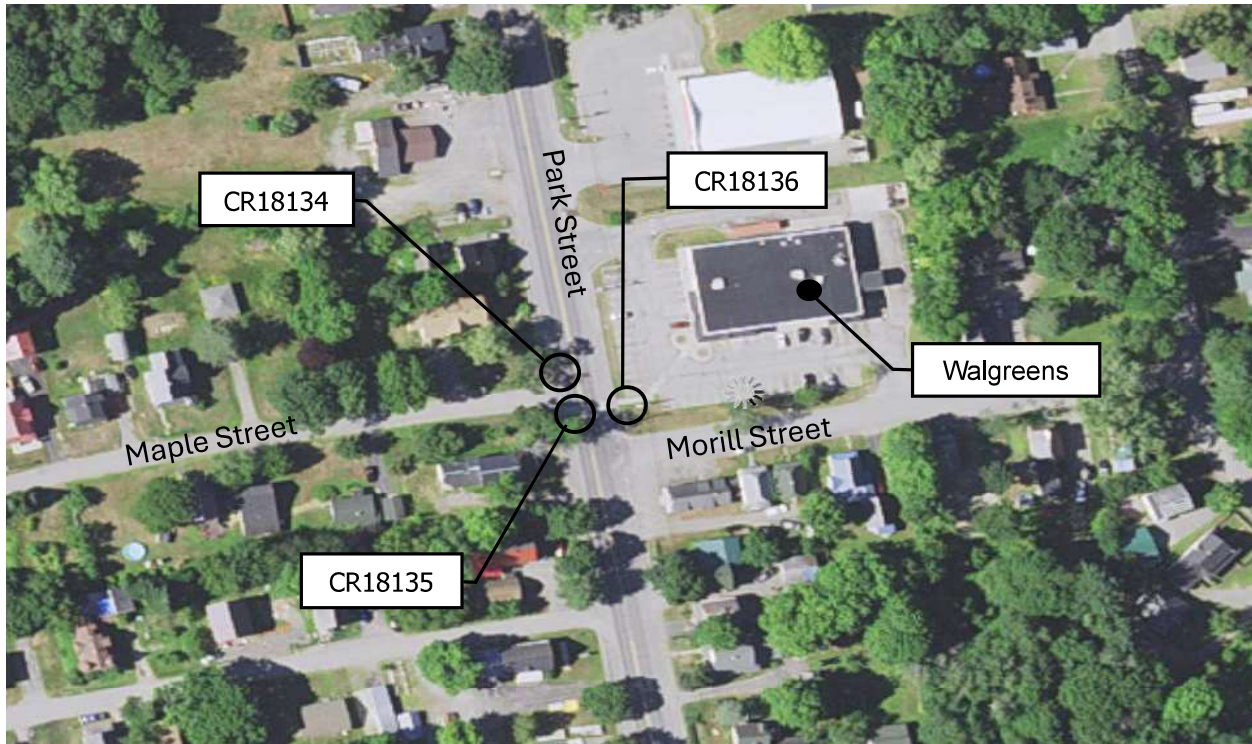
Park Street Side of Clinton Street (CR18138)

Reconstruct Pedestrian Ramp

- Reconstruct similar to Standard Details 801 (14).
- Remove Existing pavement and DWF on sidewalk approx. 25' x 5'.
- Regrade existing sidewalk approx. 25' x 5'.
- Repave existing sidewalk approx. 25' x 5'.
- Install 5' x 2' Detectable warning Fields.
- Install new curb type 3 approx. 16'.
- Install new Pedestrian Sign

Latitude: 45.254356
Longitude: -68.986631

WIN 28846.00 Milo ADA Pedestrian Ramp Report



Mid-block from Maple Street on East side of Park Street (CR18136)

Reconstruct Pedestrian Ramp

- Reconstruct similar to Standard Details 801 (14).
- Remove Existing pavement and DWF on sidewalk approx. 25' x 5'.
- Regrade existing sidewalk approx. 25' x 5'.
- Repave existing sidewalk approx. 25' x 5'.
- Install 5' x 2' Detectable warning Fields.
- Install new curb type 3 approx. 16'.
- Paint crosswalk across Park Street Between Asset ID's CR18136 and CR18135.
- Install new Pedestrian Sign

Latitude: 45.255925
Longitude: -68.988682

Park Street Side of Clinton Street (CR18135)

Reconstruct Pedestrian Ramp

- Reconstruct similar to Standard Details 801 (22).
- Remove Existing pavement and DWF on sidewalk approx. 10' x 5'.
- Regrade existing sidewalk approx. 10' x 5'.
- Repave existing sidewalk approx. 10' x 5'.
- Install 5' x 2' Detectable warning Fields.
- Install new curb type 3 approx. 10'.
- Install new Pedestrian Sign

Latitude: 45.255878
Longitude: -68.986951

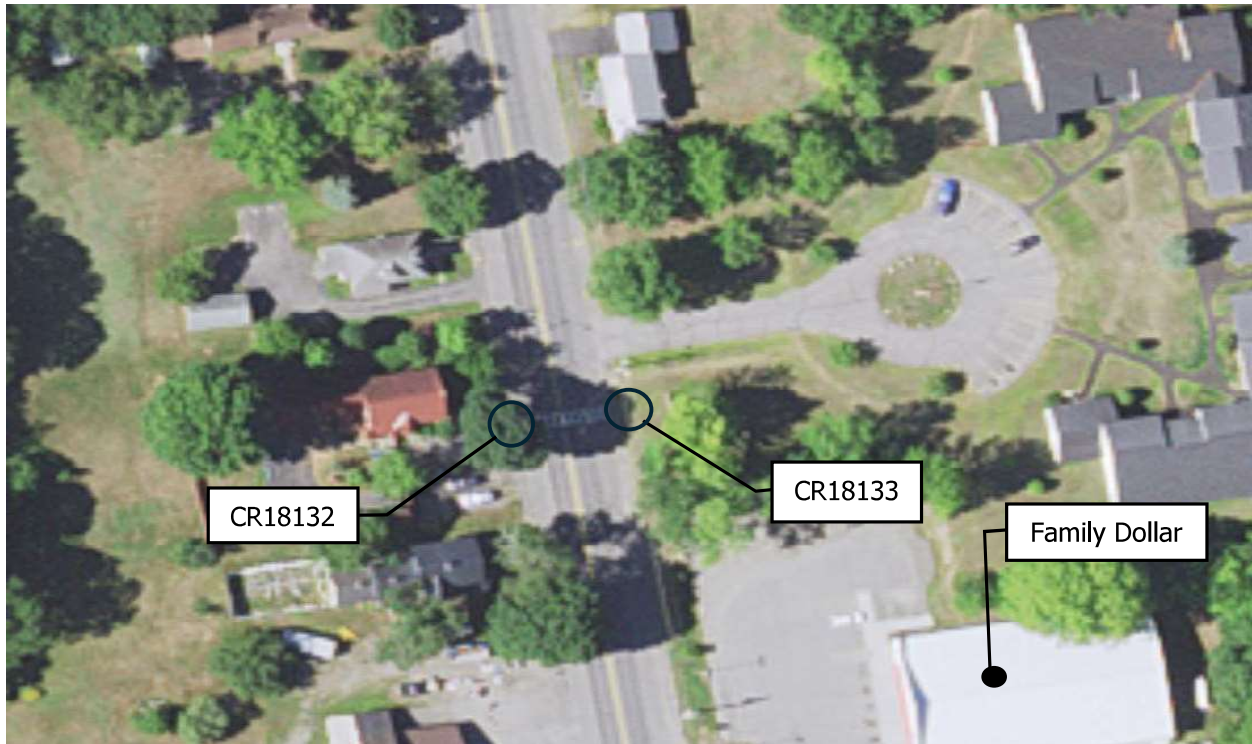
Park Street Side of Clinton Street
(CR18134)

Reconstruct Pedestrian Ramp

- Reconstruct similar to Standard Details 801 (22).
- Remove Existing pavement and DWF on sidewalk approx. 10' x 5'.
- Regrade existing sidewalk approx. 10' x 5'.
- Repave existing sidewalk approx. 10' x 5'.
- Install 5' x 2' Detectable warning Fields.
- Install new curb type 3 approx. 10'.
- Paint crosswalk across Maple Street Between Asset ID's CR18135 and CR18134.

Latitude: 45.255968
Longitude: -68.986983

WIN 28846.00 Milo ADA Pedestrian Ramp Report



Park Street (CR18133)

Reconstruct Pedestrian Ramp

- Reconstruct similar to Standard Details 801 (14).
- Remove Existing pavement and DWF on sidewalk approx. 25' x 5'.
- Regrade existing sidewalk approx. 25' x 5'.
- Repave existing sidewalk approx. 25' x 5'.
- Install 5' x 2' Detectable warning Fields.
- Install new curb type 3 approx. 16'.
- Paint crosswalk across Park Street Between Asset ID's CR18133 and CR18132.
- Install new Pedestrian Sign

Latitude: 45.257124
Longitude: -68.987071

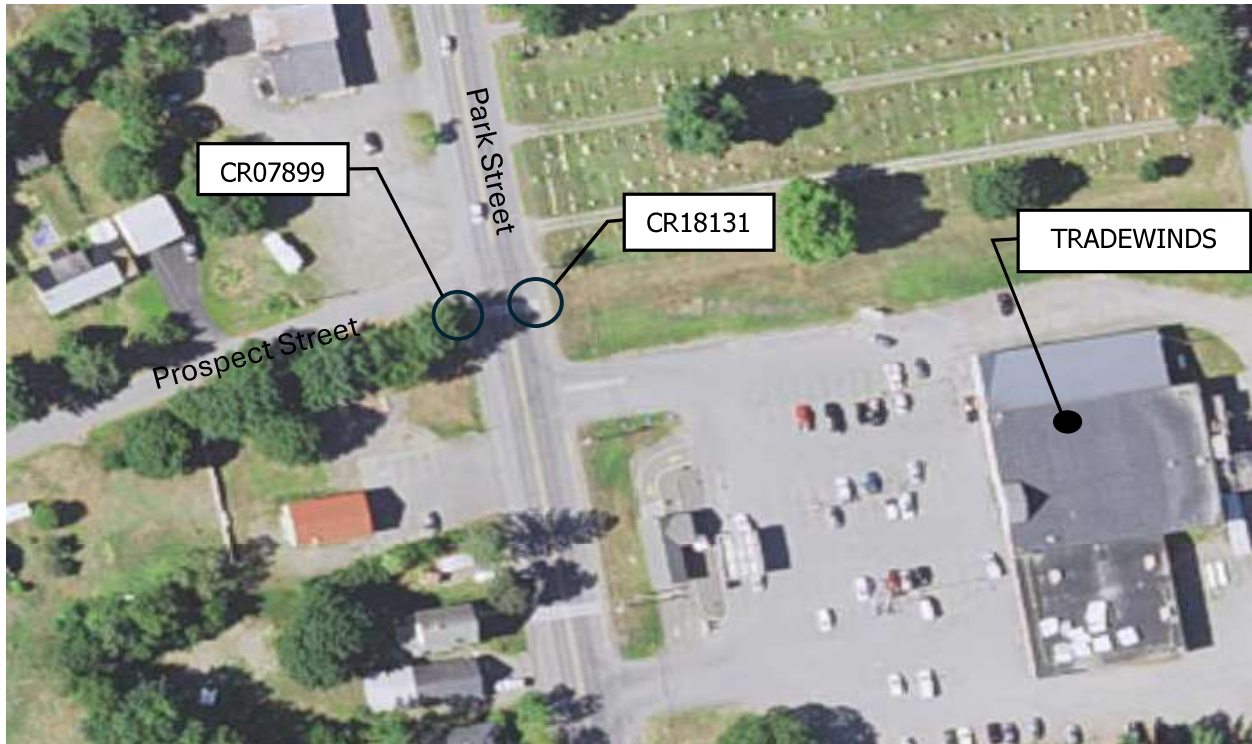
Park Street (CR18132)

Reconstruct Pedestrian Ramp

- Relocate ramp back towards house.
- Reconstruct similar to Standard Details 801 (14).
- Remove Existing pavement on sidewalk approx. 25' x 5'.
- Regrade existing sidewalk approx. 25' x 5'.
- Repave existing sidewalk approx. 25' x 5'.
- Install 5' x 2' Detectable warning Fields.
- Install new curb Type 3 approx. 16'.
- Install new Regulatory Pedestrian Sign.

Latitude: 45.257075
Longitude: -68.9874

WIN 28846.00 Milo ADA Pedestrian Ramp Report



Park Across Prospect Street East side of Park Street (CR18131)

Reconstruct Pedestrian Ramp

- Reconstruct similar to Standard Details 801 (14).
- Remove Existing pavement on sidewalk approx. 25' x 5'.
- Regrade existing sidewalk approx. 25' x 5'
- Repave existing sidewalk approx. 25' x 5'
- Install 5' x 2' Detectable warning Fields.
- Install new curb Type 3 approx. 16'.
- Paint crosswalk across Main Street Between Asset ID's CR18131 and CR08799.
- Install new Regulatory Pedestrian Sign

Latitude: 45.258692
Longitude: -68.987518

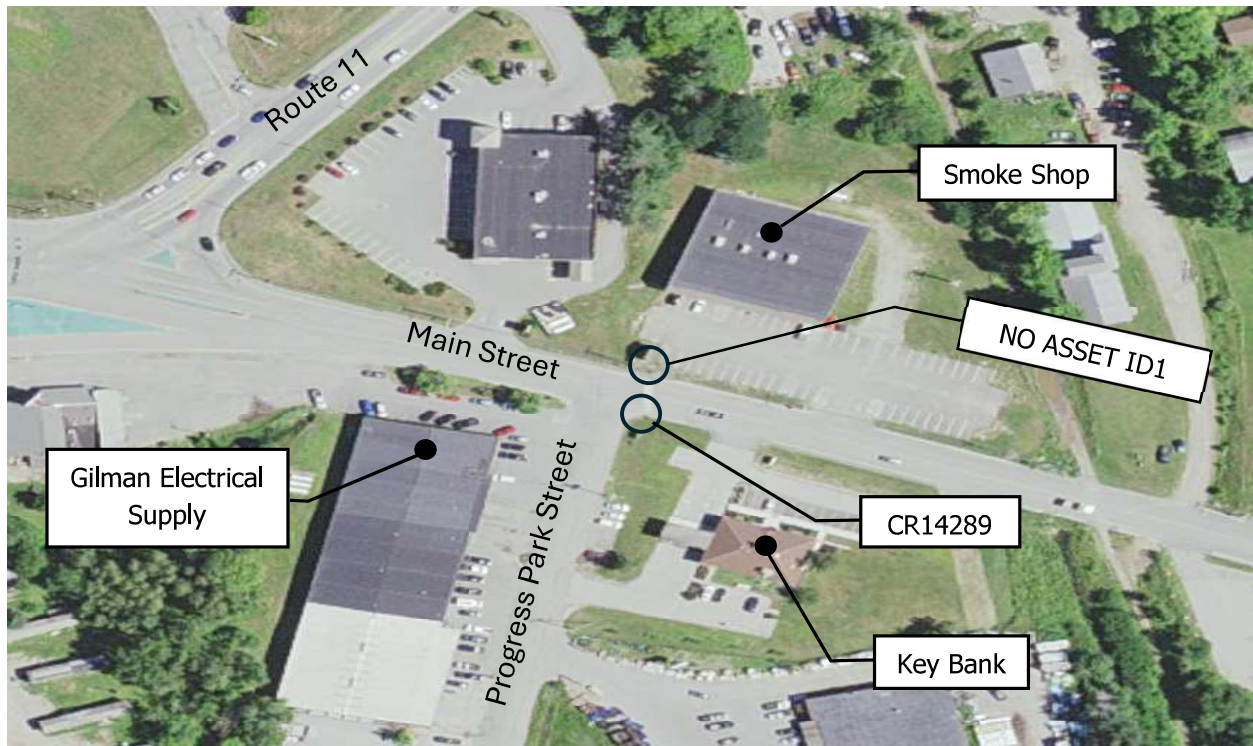
Park Street / Prospect Street (CR07899)

Reconstruct Pedestrian Ramp

- Reconstruct similar to Standard Details 801 (22).
- Remove Existing pavement on sidewalk approx. 10' x 5'.
- Regrade existing sidewalk approx. 10' x 5'
- Repave existing sidewalk approx. 10' x 5'
- Install 5' x 2' Detectable warning Fields.
- Install new curb Type 3 approx. 10'.
- Install new Regulatory Pedestrian Sign.

Latitude: 45.258746
Longitude: -68.987625

WIN 28846.00 Newport ADA Pedestrian Ramp Report



Main Street / Progress Park Street (CR14289)

Reconstruct Pedestrian Ramp

- Reconstruct similar to Standard Details 801 (22).
- Remove Existing pavement on sidewalk approx. 5' x 5'.
- Regrade existing sidewalk approx. 5' x 5'
- Repave existing sidewalk approx. 5' x 5'
- Install 5' x 2' Detectable warning Fields at Skew.
- Repaint crosswalk across Main Street Between Asset ID's CR14289 and No Asset ID1.

Latitude: 44.836622
Longitude: -69.283648

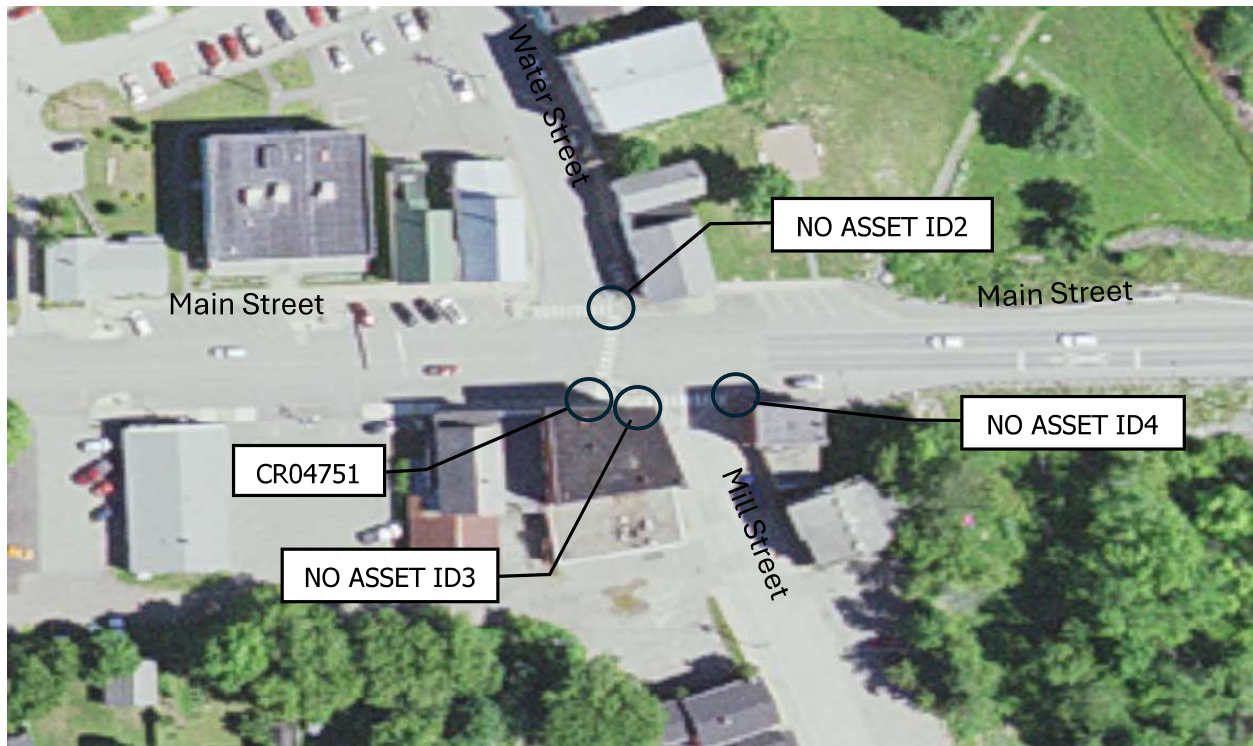
Adjacent Landing to (CR14289) (No Asset ID1)

Reconstruct Pedestrian Ramp

- Reconstruct a one-side ramp similar to Standard Details 801 (14).
- Remove Existing pavement on sidewalk approx. 25' x 5'.
- Regrade existing sidewalk approx. 25' x 5'.
- Repave existing sidewalk approx. 25' x 5'.
- Install 5' x 2' Detectable warning Fields.
- Reset 16' curb type 1.

Latitude: 44.836726
Longitude: -69.283646

WIN 28846.00 Newport ADA Pedestrian Ramp Report



Main Street / Water Street Midblock (CR04751)

Reconstruct Pedestrian Ramp

- Remove existing concrete landing approx. 10' x 10' and detectable warning fields.
- Adjust the affected Water gate.
- Regrade the sidewalk approx. 10' x 10'.
- Replace the concrete landing approx. 10' x 10'.
- Install 5' x 2' Detectable warning Fields.
- Repaint crosswalk across Main Street Between Asset ID's CR14289 and No Asset ID1.

Latitude: 44.835203
Longitude: -69.273580

Main Street / Water Street Northeast Corner (No Asset 1D2)

Reconstruct Pedestrian Ramp

- Remove existing pavement on sidewalk approx. 5' x 5' and 16' x 2' shoulder.
- Regrade existing sidewalk approx. 5' x 5' and approx. 16' x 2' shoulder.
- Repave existing sidewalk approx. 5' x 5' and approx. 16' x 2' shoulder.
- Install 5' x 2' Detectable warning Fields.

Latitude: 44.835326
Longitude: -69.273546

Main Street / Mill Street Northwest (No Asset 1D3)

Reconstruct Pedestrian Ramp

- Remove existing concrete landing approx. 16' x 8' and detectable warning fields.
- Regrade the sidewalk approx. 16' x 8'.
- Replace the concrete landing approx. 16' x 8'.
- Install 5' x 2' Detectable warning Fields.
- Repaint crosswalk across Mill Street between Asset ID's No asset ID3 and No Asset ID4.

Latitude: 44.835184
Longitude: -69.273496

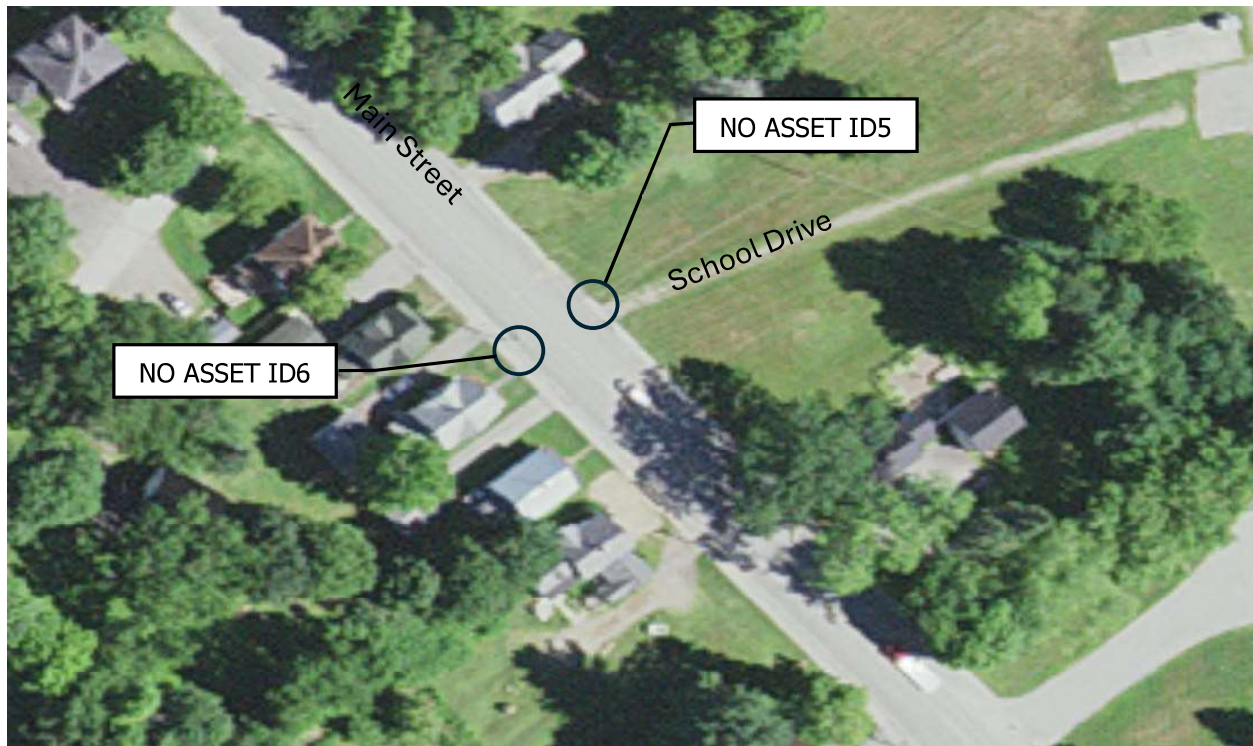
Main Street / Mill Street Northeast (No Asset 1D4)

Reconstruct Pedestrian Ramp

- Remove existing pavement on sidewalk approx. 25' x 5'.
- Regrade existing sidewalk approx. 25' x 5'.
- Repave existing sidewalk approx. 25' x 5'.
- Install 6' x 2' Detectable warning Fields.
- Install new Regulatory Pedestrian Sign

Latitude: 44.835190
Longitude: -69.273322

WIN 28846.00 Newport ADA Pedestrian Ramp Report



Main Street / School Drive (No Asset 1D5)

Reconstruct Pedestrian Ramp

- Reconstruct similar to Standard Details 801 (14).
- Remove Existing pavement on sidewalk approx. 25' x 5'.
- Regrade existing sidewalk approx. 25' x 5'
- Repave existing sidewalk approx. 25' x 5'
- Install 5' x 2' Detectable warning Fields.
- Install 20' curb type 3.
- Repaint crosswalk across Main Street Between Asset ID's No Asset ID5 and No Asset ID6.
- Install new Regulatory Pedestrian Sign.

Latitude: 44.832426
Longitude: -69.267442

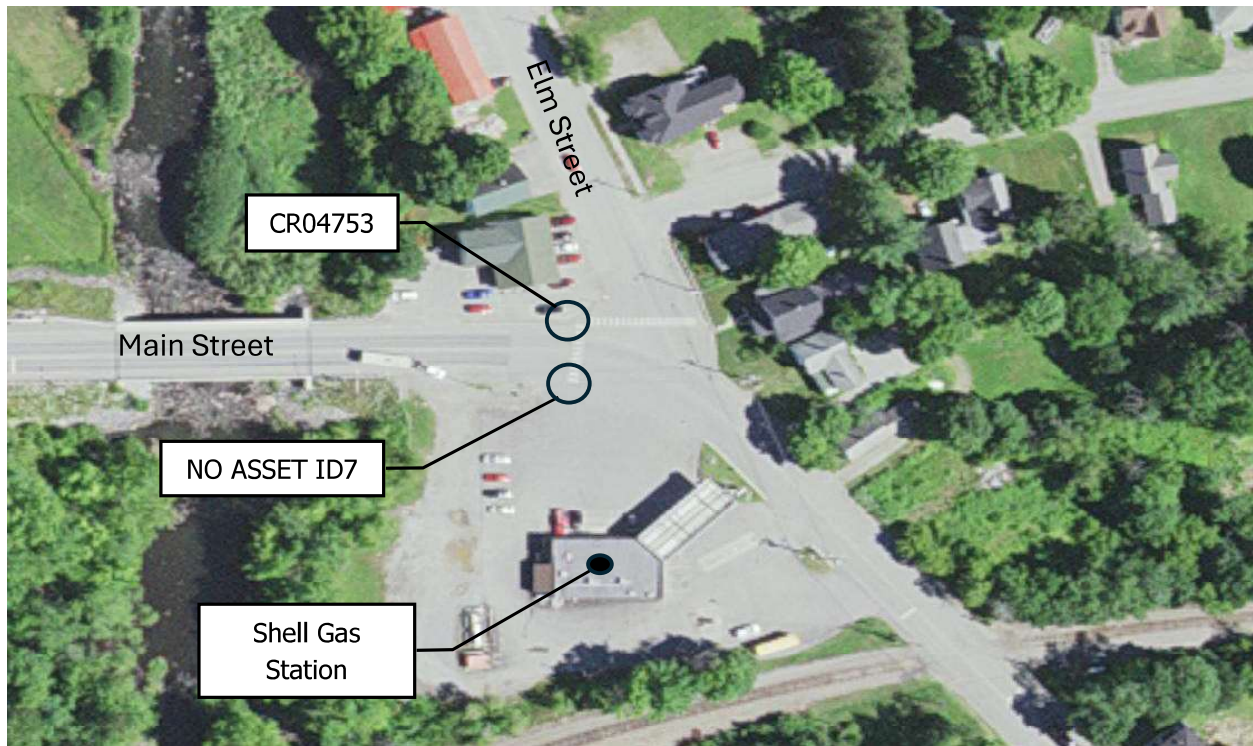
Main Street / School Drive Adjacent Landing (No Asset 1D6)

Reconstruct Pedestrian Ramp

- Reconstruct similar to Standard Details 801 (27).
- Remove Existing pavement on sidewalk approx. 10' x 5'.
- Regrade existing sidewalk approx. 10' x 5'
- Repave existing sidewalk approx. 10' x 5'
- Install 5' x 2' Detectable warning Fields.
- Install 10' curb type 3.
- Install new Regulatory Pedestrian Sign.

Latitude: 44.832353
Longitude: -69.267585

WIN 28846.00 Newport ADA Pedestrian Ramp Report



Main Street / Elm Street North Corner (CR04753)

Relocate / Reconstruct Pedestrian Ramp

- Relocate the ramp further down Main street (approx. 44.835316, -69.271325) and remove the existing Crosswalk.
- Reconstruct similar to Standard Details 801 (14).
- Remove Existing pavement on sidewalk approx. 25' x 5' and 16' x 2' shoulder.
- Regrade existing sidewalk approx. 25' x 5' and 16' x 2' shoulder.
- Repave existing sidewalk approx. 25' x 5' and 16' x 2' shoulder.
- Install 5' x 2' Detectable warning Fields.
- Reset 21' curb type 1.
- Paint a new crosswalk across Main Street Between Asset ID CR04753 and No Asset ID7.
- Install new Regulatory Pedestrian Sign.

Latitude: 44.835336
Longitude: -69.271164

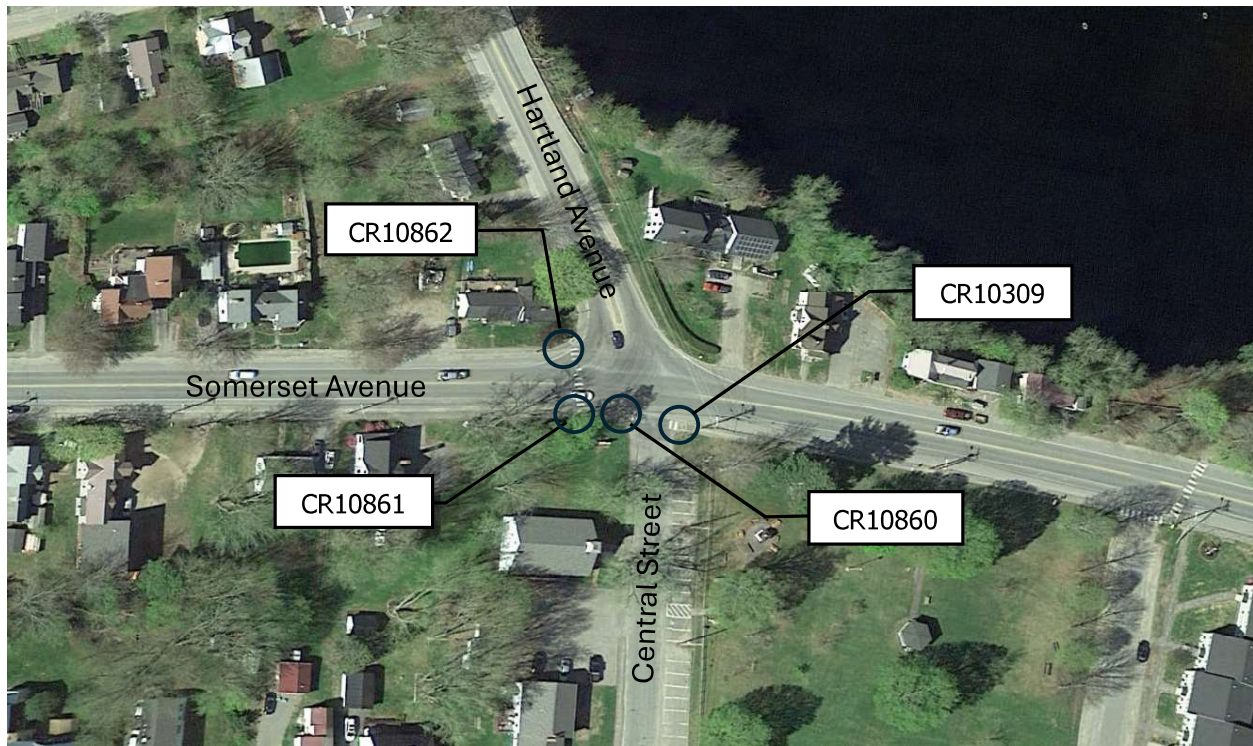
Main Street / Shell

Relocate / Reconstruct Pedestrian Ramp

- Relocate ramp perpendicular to CR04753
- Remove existing pavement on sidewalk approx. 25' x 5'.
- Regrade existing sidewalk approx. 25' x 5'.
- Repave existing sidewalk approx. 25' x 5'.
- Install 5' x 2' Detectable warning Fields.

Latitude: 44.835182
Longitude: -69.271182

WIN 28846.00 Pittsfield ADA Pedestrian Ramp Report



Central Street / Somerset Avenue Southeast (CR10309)

Reconstruct Pedestrian Ramp

- Reconstruct similar to Standard Details 801 (22).
- Remove Existing pavement and DWF on sidewalk approx. 10' x 5'.
- Regrade existing sidewalk approx. 10' x 5' and shoulder approx. 16' x 2'.
- Repave existing sidewalk approx. 10' x 5' and shoulder approx. 16' x 2'.
- Install 5' x 2' Detectable warning Fields.
- Repaint crosswalk across Central Street Between Asset ID's CR10309 and CR10860.

Latitude: 44.784889
Longitude: -69.385159

Central Street / Somerset Avenue South (CR10860)

Reconstruct Pedestrian Ramp

- Reconstruct similar to Standard Details 801 (22).
- Remove Existing pavement and DWF on sidewalk approx. 10' x 5'.
- Regrade existing sidewalk approx. 10' x 5' and shoulder approx. 16' x 2'.
- Repave existing sidewalk approx. 10' x 5' and shoulder approx. 16' x 2'.
- Install 5' x 2' Detectable warning Fields.

Latitude: 44.784915
Longitude: -69.385346

Somerset Avenue Southwest / Hartland Avenue / Central Street (CR10861)

Reconstruct Pedestrian Ramp

- Reconstruct similar to Standard Details 801 (14).
- Remove Existing pavement and DWF on sidewalk approx. 25' x 5'.
- Regrade existing sidewalk approx. 25' x 5' and shoulder approx. 21' x 2'
- Repave existing sidewalk approx. 25' x 5' and shoulder approx. 21' x 2'.
- Reset curb type 3 approx. 21'.
- Install 5' x 2' Detectable warning Fields.
- Repaint crosswalk across Central Street Between Asset ID's CR10861 and CR10862.

Latitude: 44.784927
Longitude: -69.385452

Somerset Avenue West / Hartland Avenue / Central Street (CR10862)

Reconstruct Pedestrian Ramp

- Reconstruct similar to Standard Details 801 (14).
- Remove Existing pavement and DWF on sidewalk approx. 25' x 5'.
- Regrade existing sidewalk approx. 25' x 5' and shoulder approx. 21' x 2'
- Repave existing sidewalk approx. 25' x 5' and shoulder approx. 21' x 2'.
- Install 5' x 2' Detectable warning Fields.

Latitude: 44.785098
Longitude: -69.385462

WIN 28846.00 Pittsfield ADA Pedestrian Ramp Report



Hartland Avenue / Union Street Southwest (No Asset 1D1)

Relocate/Reconstruct Pedestrian Ramp

- Move away from catch basin. Relocate ramp back towards house.
- Reconstruct similar to Standard Details 801 (14).
- Remove Existing pavement on sidewalk approx. 25' x 5'.
- Regrade existing sidewalk approx. 25' x 5'
- Repave existing sidewalk approx. 25' x 5'
- Install 5' x 2' Detectable warning Fields.
- Install new curb Type 3 approx. 16'.
- Install new Regulatory Pedestrian Sign
- Remove and paint new crosswalk across Hartland Avenue Between Asset ID's No Asset ID1 and CR10867.

Latitude: 44.787850
Longitude: -69.386724

Hartland Avenue / Union Street Northeast (CR10867)

Relocate/Reconstruct Pedestrian Ramp

- Move away from catch basin. Relocate ramp back towards house.
- Relocate ramp back towards house.
- Reconstruct similar to Standard Details 801 (14).
- Remove Existing pavement on sidewalk approx. 25' x 5'.
- Regrade existing sidewalk approx. 25' x 5'
- Repave existing sidewalk approx. 25' x 5'
- Install 5' x 2' Detectable warning Fields.
- Install new curb Type 3 approx. 16'.
- Install new Regulatory Pedestrian Sign.

Latitude: 44.787833
Longitude: -69.386639

WIN 28846.00 Pittsfield ADA Pedestrian Ramp Report



Hartland Avenue /Waverly Street East Ramp (No Asset 1D2)

Relocate/Reconstruct Pedestrian Ramp

- Move the ramp back to make it perpendicular to the adjacent landing.
- Reconstruct similar to Standard Details 801 (14).
- Remove Existing pavement on sidewalk approx. 25' x 5'.
- Regrade existing sidewalk approx. 25' x 5'
- Repave existing sidewalk approx. 25' x 5'
- Install 5' x 2' Detectable warning Fields.
- Install 16' curb Type 3.
- Install new Regulatory Pedestrian Sign
- Remove and paint a new crosswalk across Hartland Avenue between Asset ID's No Asset ID2 and No Asset ID3.

Latitude: 44.793883
Longitude: -69.389534

Hartland Avenue West Ramp (No Asset ID3)

Reconstruct Pedestrian Ramp

- Reconstruct similar to Standard Details 801 (27).
- Remove Existing pavement on sidewalk approx. 10' x 5'.
- Regrade existing sidewalk approx. 10' x 5'
- Repave existing sidewalk approx. 10' x 5'
- Install 5' x 2' Detectable warning Fields.
- Install 10' curb Type 3.
- Install new Regulatory Pedestrian Sign.

Latitude: 44.793858
Longitude: -69.389721