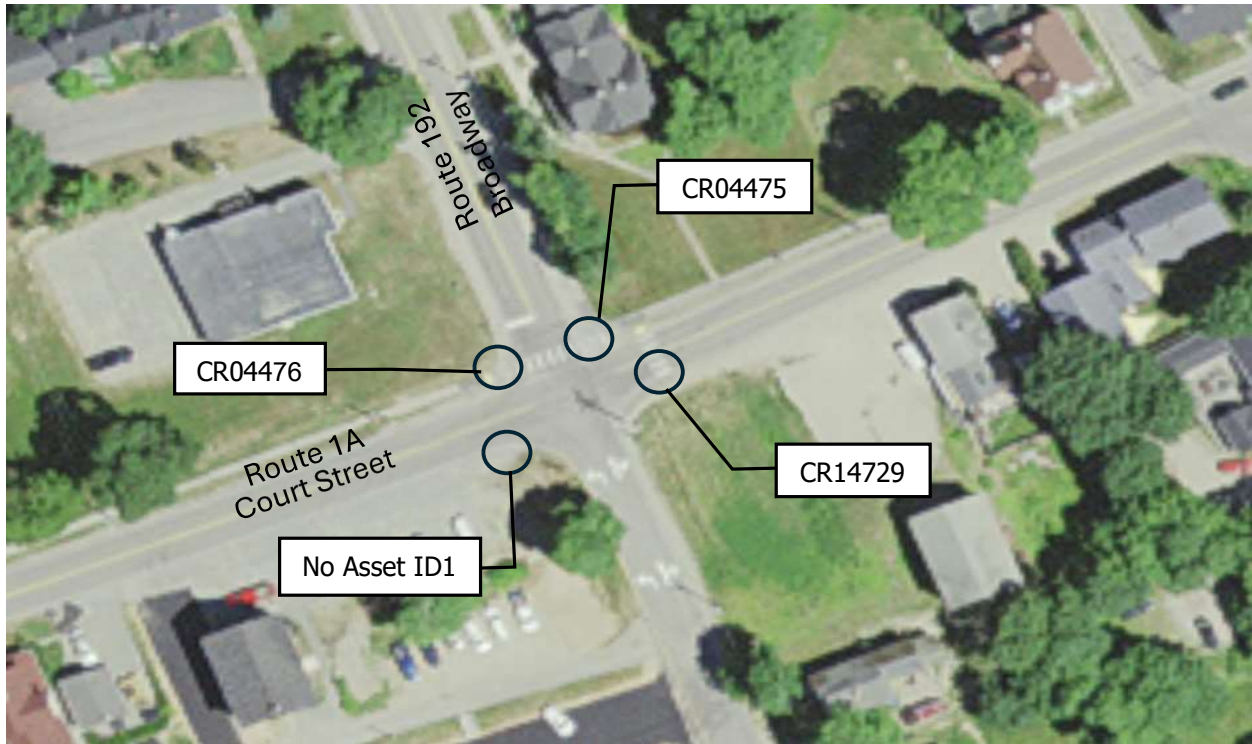


WIN 28844.00 Machias ADA Pedestrian Ramp Report



Route 1A (Court Street) and Northeast Route 192 (Broadway) (CR04475)

Reconstruct Pedestrian Ramp

- Reconstruct similar to Standard Detail 801 (20).
- Remove Existing pavement on sidewalk approx. 40' x 5'.
- Regrade existing sidewalk approx. 40' x 5' and shoulder approx. 34' x 2'.
- Repave existing sidewalk approx. 40' x 5' and shoulder approx. 34' x 2'.
- Install 6' x 2' Detectable warning Fields.
- Install new 18' Vertical curb type 1 (radial curb).
- Install new 8' Terminal curb type 1.
- Paint crosswalk across route 192 between Asset ID's CR04775 and CR04776.

Latitude: 44.715057
Longitude: -67.461441

Route 1A (Court Street) and Northwest Route 192 (Broadway) (CR04476)

Reconstruct Pedestrian Ramp

- Reconstruct similar to Standard Detail 801(22).
- Remove Existing pavement on sidewalk approx. 15' x 5'.
- Regrade existing sidewalk approx. 15' x 5'.
- Repave existing sidewalk approx. 15' x 5'.
- Install 6' x 2' Detectable warning Fields at skew.
- Paint crosswalk across route 1A between Asset ID's CR0476 and No Asset ID1.

Latitude: 44.714981
Longitude: -67.461680

**Route 1A (Court Street) and Northwest
Route 192 (Broadway) (No Asset ID1)**

Reconstruct Pedestrian Walkway

- Remove Existing pavement on sidewalk approx. 5'x 4'.
- Regrade and level the landing area approx. 5' x 4'.
- Repave the leveled landing area approx. 5' x 4'.
- Install 5' x 2' Detectable warning Fields.

Latitude: 44.71489
Longitude: -67.461636

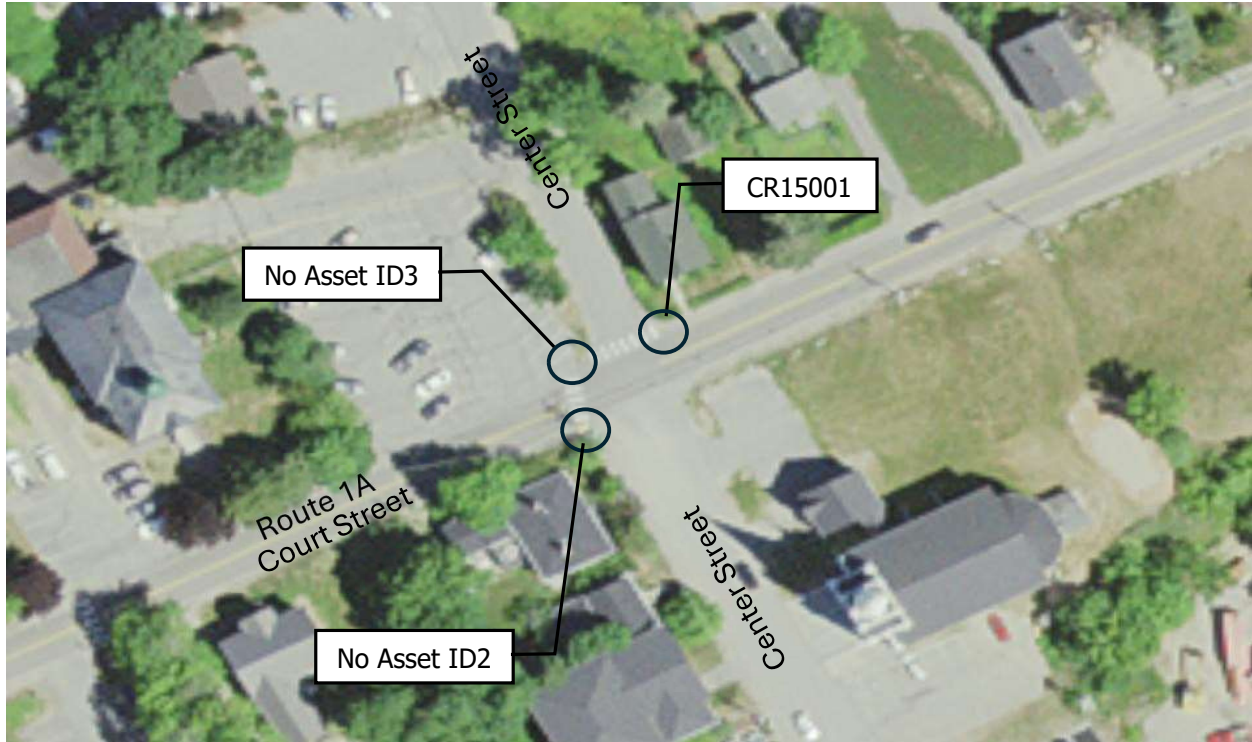
**Route 1A (Court Street) and Southeast
Route 192 (Broadway) (CR14729)**

Reconstruct Pedestrian Walkway

- Remove Existing pavement on sidewalk approx. 5'x 5'.
- Regrade and level the landing area approx. 5' x 5'.
- Repave the leveled landing area approx. 5' x 5'.
- Install 5' x 2' Detectable warning Fields.

Latitude: 44.714990
Longitude: -67.461367

WIN 28844.00 Machias ADA Pedestrian Ramp Report



Route 1A (Court Street) and Southwest Center Street (No Asset ID2)

Construct Pedestrian Walkway

- Remove existing pavement 5' x 4' and affected granite bullnose.
- Regrade and level the landing area approx. 5' x 4'.
- Repave the leveled landing area approx. 5' x 4'.
- Install 6' Vertical curb Type 1 (Radial curb).
- Install 5' x 2' Detectable warning Fields.
- Install Regulatory Pedestrian Sign.
- Paint crosswalk across route 1A Between No Asset ID's 2 and 3.

Latitude: 44.716125
Longitude: -67.458387

Route 1A (Court Street) and Northwest Center Street (No Asset ID3)

Construct Pedestrian Walkway

- Remove existing pavement 6' x 5'.
- Regrade and level the landing area approx. 6' x 5' and shoulder approx. 6' x 2'.
- Repave the leveled landing area approx. 6' x 5' and shoulder approx. 6' x 2'.
- Install 6' x 2' Detectable warning Fields.
- Repaint crosswalk across route Center Street Between No Asset ID's 3 and CR15001.

Latitude: 44.716321
Longitude: -67.458381

**Route 1A (Court Street) and Northeast Side
Of Center Street (CR15001)**

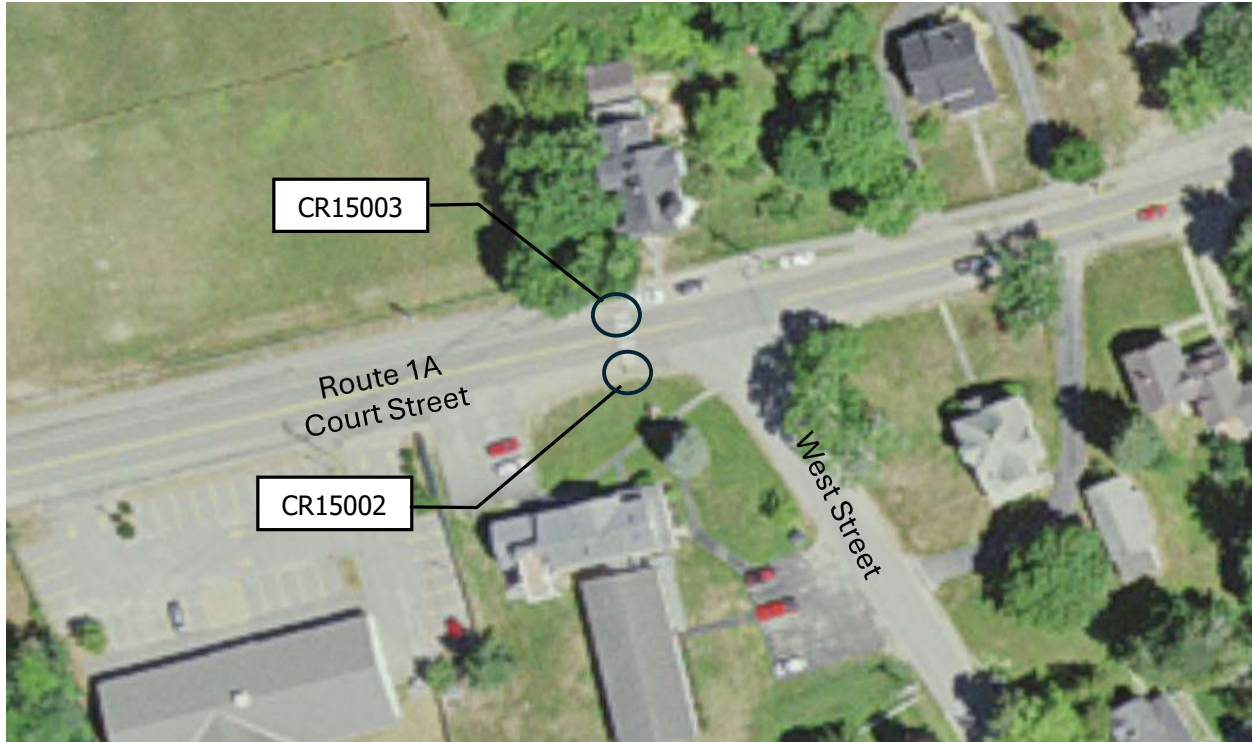
Construct Pedestrian Walkway

- Reconstruct Similar to Standard Detail 801 (22).
- Remove existing pavement 10' x 4'.
- Regrade existing sidewalk approx. 10' x 4'.
- Repave existing sidewalk approx. 10' x 4'.
- Install 5' x 2' Detectable warning Fields.

Latitude: 44.716256

Longitude: -67.45826

WIN 28844.00 Machias ADA Pedestrian Ramp Report



Route 1A (Court Street) South (CR15002)

Reconstruct Pedestrian Walkway

- Regrade and level the landing area approx. 5' x 5'.
- Repave the leveled landing area approx. 5' x 5'.
- Install 5' x 2' Detectable warning Fields.
- Repaint crosswalk across route 1A Between Asset ID's CR15002 and CR15003.

Latitude: 44.713481
Longitude: -67.467116

Route 1A (Court Street) North (CR15003)

Reconstruct Pedestrian Walkway

- Remove Existing pavement on sidewalk approx. 5' x 5'.
- Regrade and level the landing area approx. 5' x 5'.
- Repave the leveled landing area approx. 5' x 5'.
- Install 5' x 2' Detectable warning Fields.
- Install Regulatory Pedestrian Sign.

Latitude: 44.713549
Longitude: -67.467151

WIN 28844.00 Machias ADA Pedestrian Ramp Report



Route 1A (Court Street) South (CR15184)

Reconstruct Pedestrian Walkway

- Remove Existing pavement on sidewalk approx. 5' x 5'.
- Regrade and level the landing area approx. 5' x 5'.
- Repave the leveled landing area approx. 5' x 5'.
- Install 5' x 2' Detectable warning Fields.
- Repaint crosswalk across route 1A Between Asset ID's CR15184 and CR15185.

Latitude: 44.715836
Longitude: -67.459216

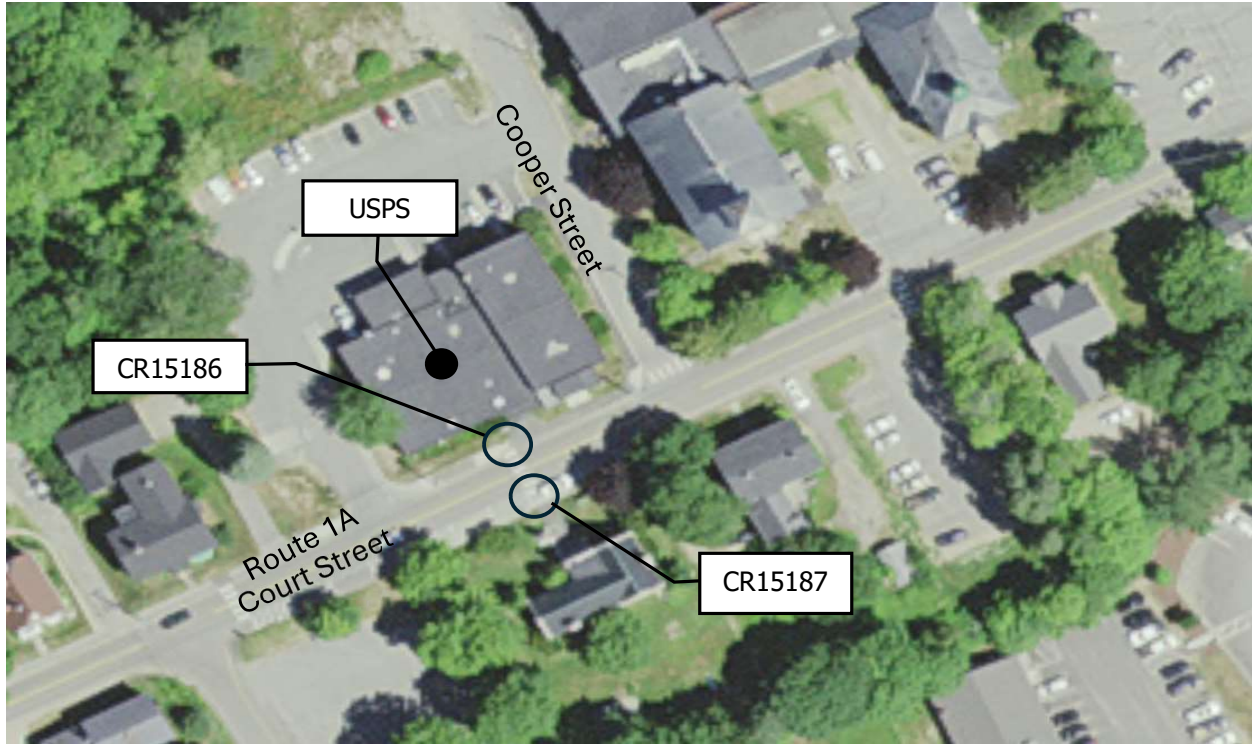
Route 1A (Court Street) North (CR15185)

Reconstruct Pedestrian Ramp

- Reconstruct similar to Standard Detail 801(27).
- Remove existing pavement on sidewalk approx. 30' x 5'.
- Remove existing pavement on sidewalk approx. 30' x 5' and shoulder approx. 25' x 2'.
- Regrade existing sidewalk approx. 30' x 5' and shoulder approx. 25' x 2'.
- Install 5' x 2' Detectable warning Fields.

Latitude: 44.715899
Longitude: -67.459306

WIN 28844.00 Machias ADA Pedestrian Ramp Report



Route 1A (Court Street) North (CR15186)

Reconstruct Pedestrian Walkway

- Remove existing Detectable Warning field.
- Install new 6' x 2' Detectable warning Fields.
- Repaint crosswalk across route 1A Between Asset ID's CR15186 and CR15187.

Latitude: 44.715669
Longitude: -67.459863

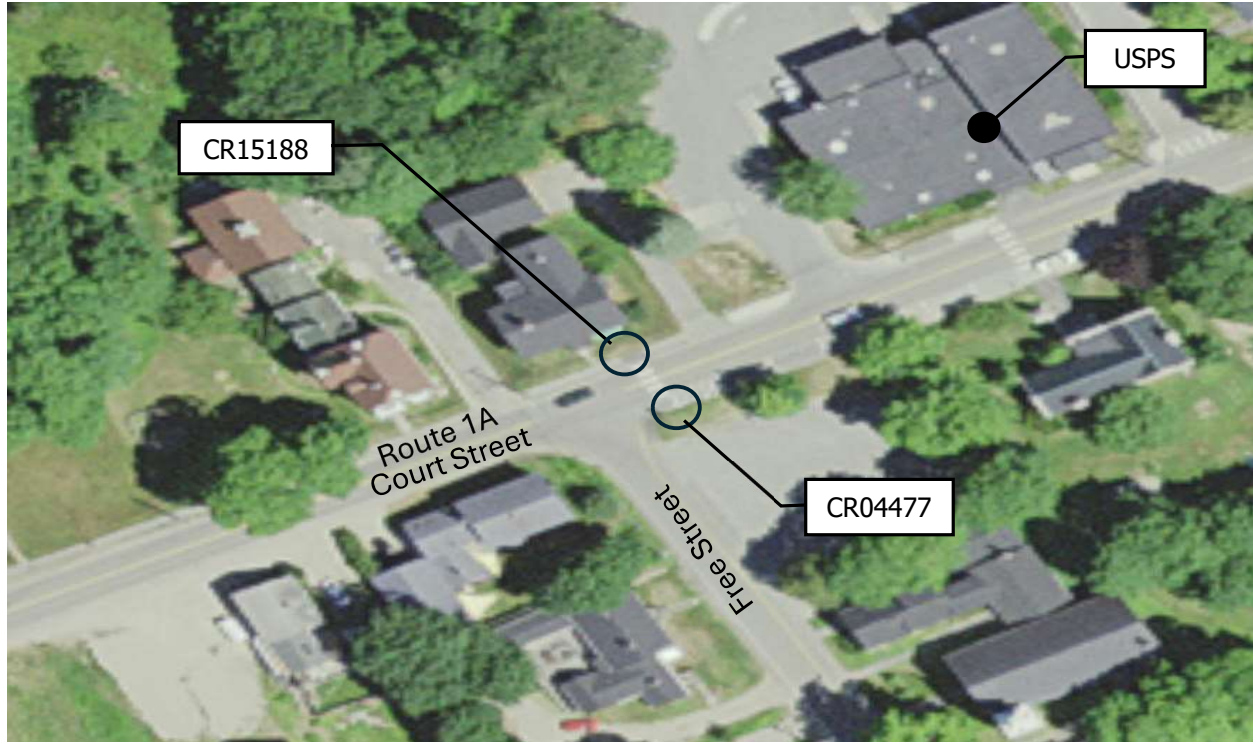
Route 1A (Court Street) South (CR15187)

Reconstruct Pedestrian Walkway

- Remove existing Pavement approx. 5' x 5'.
- Regrade and level the landing area approx. 5' x 5'.
- Repave the leveled landing area approx. 5' x 5'.
- Install 5' x 2' Detectable warning Fields.

Latitude: 44.715585
Longitude: -67.459795

WIN 28844.00 Machias ADA Pedestrian Ramp Report



Route 1A (Court Street) South (CR04477)

Reconstruct Pedestrian Ramp

- Reconstruct Similar to Standard Detail 801 (16).
- Remove Existing pavement on sidewalk approx. 25' x 5'.
- Regrade existing sidewalk approx. 25' x 5'.
- Repave existing sidewalk approx. 25' x 5'.
- Install 5' x 2' Detectable warning Fields.
- Install new 4' Terminal curb type 1.
- Install new 8' Vertical curb (radial curb).
- Repaint crosswalk across route 1A Between Asset ID's CR04477 and CR15188.

Latitude: 44.715351
Longitude: -67.460387

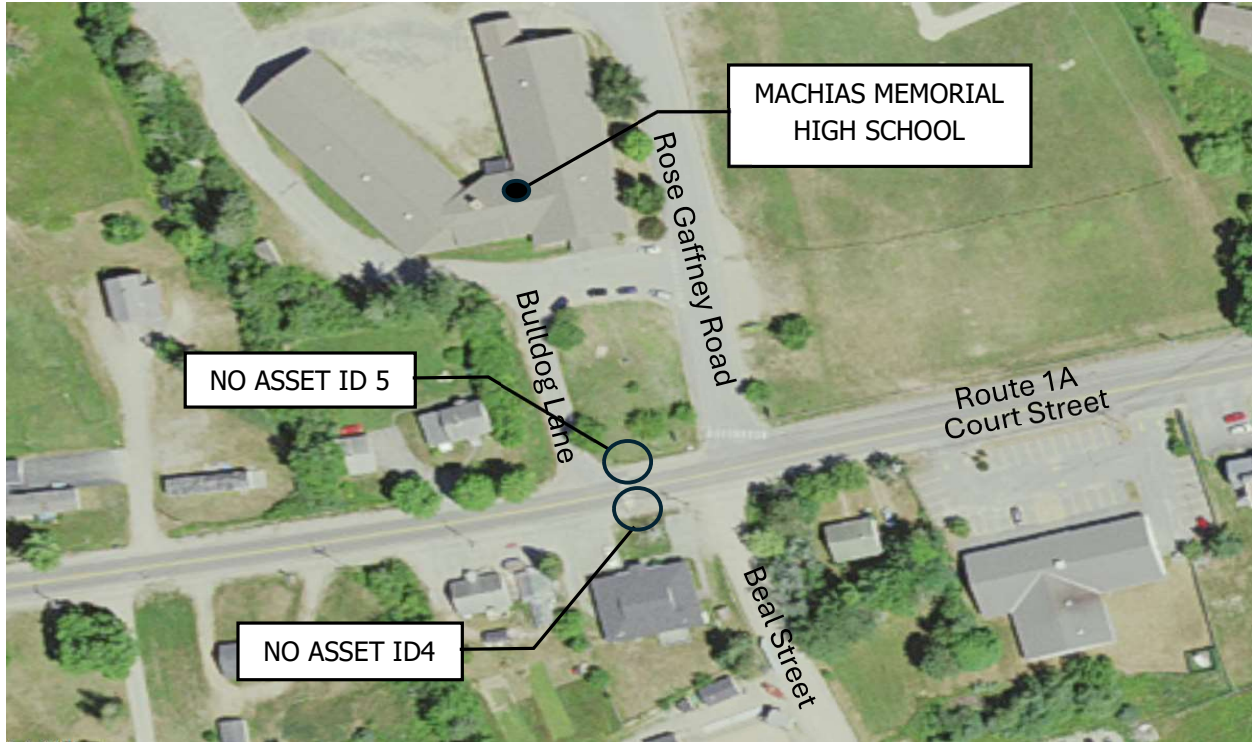
Route 1A (Court Street) South (CR15188)

Reconstruct Pedestrian Walkway

- Remove existing Pavement approx. 5' x 5'.
- Regrade and level the landing area approx. 5' x 5'.
- Repave the leveled landing area approx. 5' x 5'.
- Install 5' x 2' Detectable warning Fields.

Latitude: 44.715428
Longitude: -67.460451

WIN 28844.00 Machias ADA Pedestrian Ramp Report



Machias Highschool / Court Street South (No Asset ID4)

Relocate / Reconstruct Pedestrian Ramp

- Remove existing Pavement approx. 5' x 5'.
- Regrade and level the landing area approx. 5' x 5'.
- Repave the leveled landing area approx. 5' x 5'.
- Install 5' x 2' Detectable warning Fields.

Latitude: 44.713165
Longitude: -67.468881

Machias Highschool / Court Street South (No Asset ID5)

Relocate / Reconstruct Pedestrian Walkway

- Relocate the ramp at the corner of Rose Gaffney road and Court street and remove existing Crosswalk.
- Reconstruct Similar to Standard Detail 801 (27).
- Remove Existing pavement on sidewalk approx. 40' x 5'.
- Regrade existing sidewalk approx. 40' x 5'.
- Repave existing sidewalk approx. 25' x 5'.
- Install 5' x 2' Detectable warning Fields.
- Install Regulatory Pedestrian Sign.
- Repaint crosswalk across route 1A Between No Asset ID4 and No Asset ID5

Latitude: 44.713235
Longitude: -67.468899