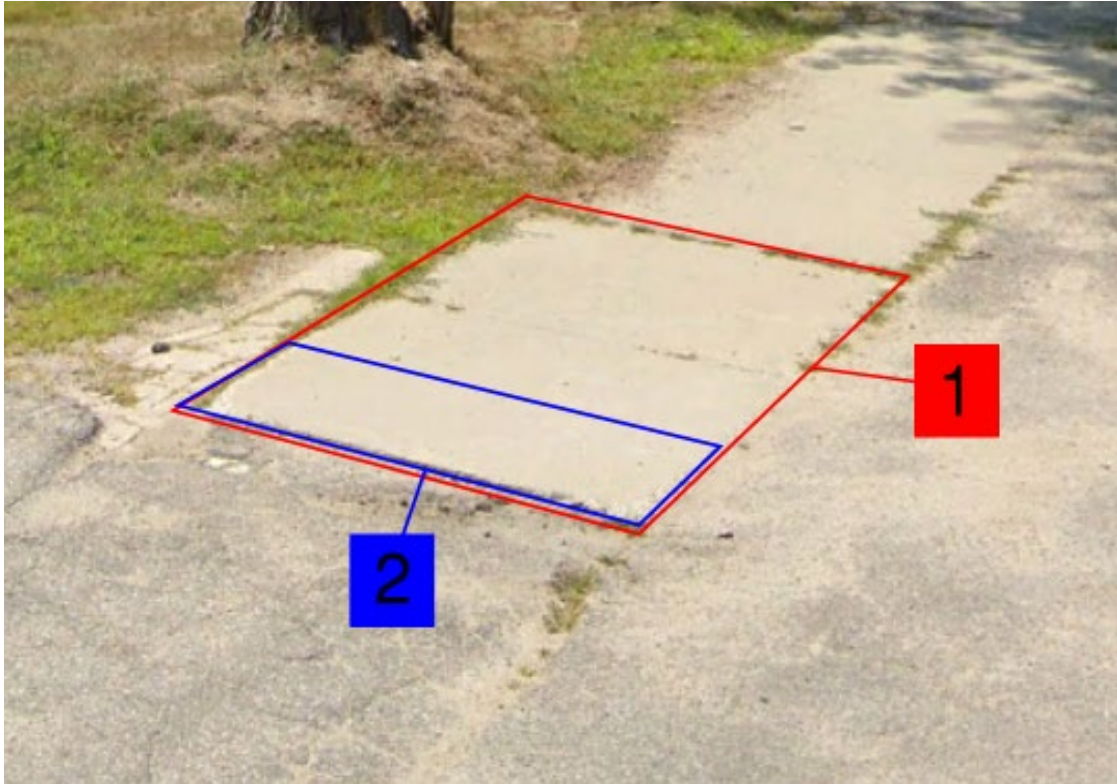


## Pedestrian Ramp Report

\*Drawings Not to Scale





**POR ADA#1/CR10918**

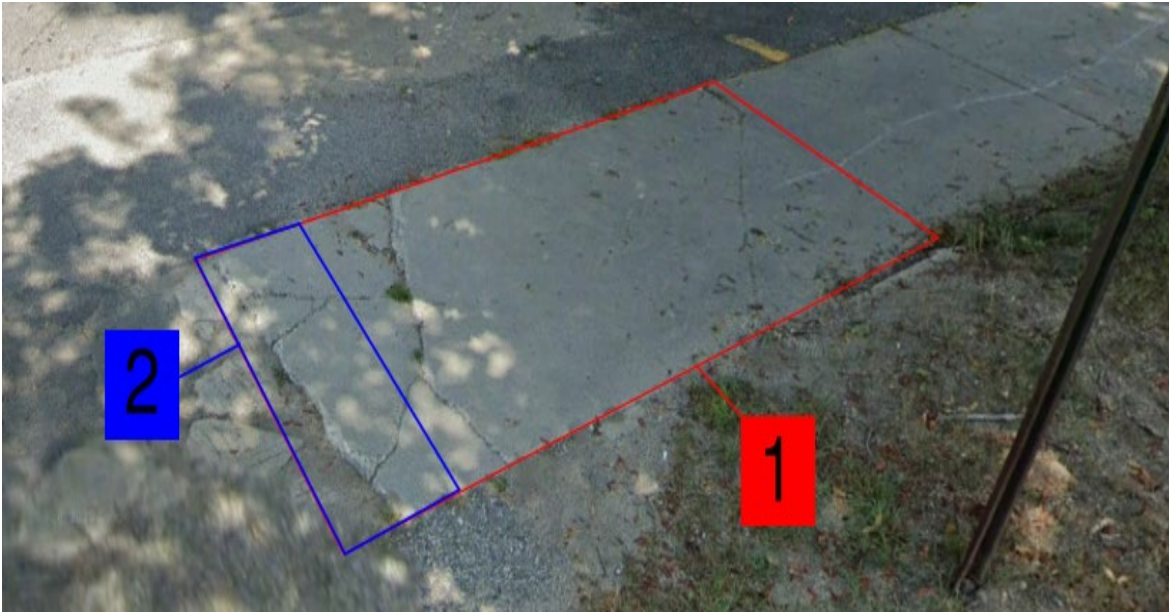
Pedestrian Ramp on Oak Street/Main St intersection:

1. Remove, Regrade & Install 9'x5' of Reinforced Concrete Sidewalk
2. Install 5'x2' Detectable Warning Field
3. Grade, Loam and Seed any disturbed areas

Latitude: 43.80968

Longitude: -70.887489

Reference: Standard Detail 801(22)



**POR ADA#2/CR10919**

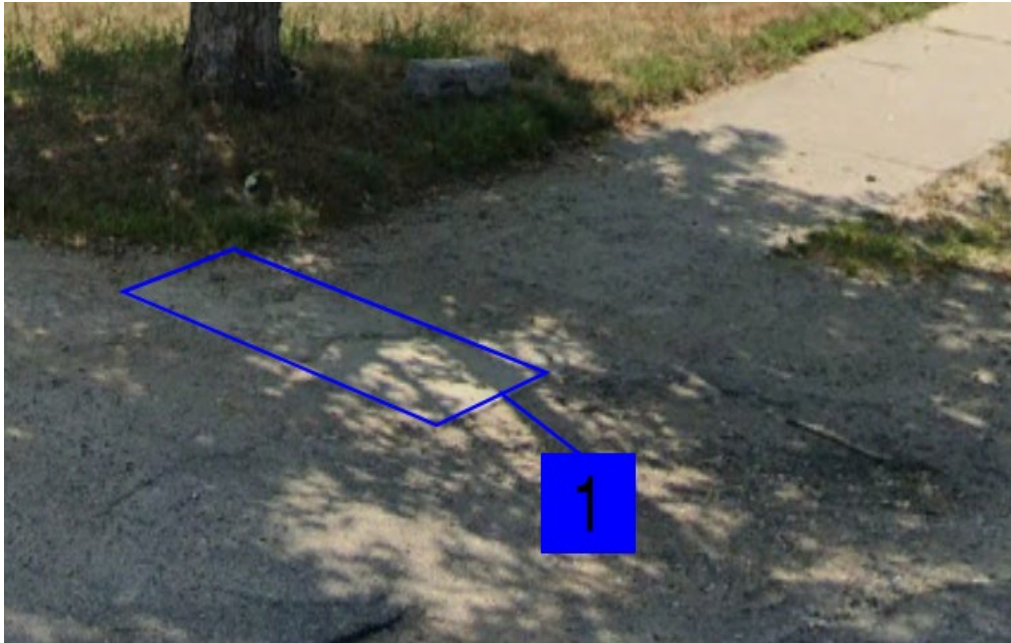
Pedestrian Ramp on Oak Street/Main St intersection:

1. Remove, Regrade & Install 5'x15' of Reinforced Concrete Sidewalk
2. Install 5'x2' Detectable Warning Field
3. Grade, Loam and Seed any disturbed areas

Latitude: 43.80968

Longitude: -70.887489

Reference: Standard Detail 801(22)



**POR ADA#3/CR10920**

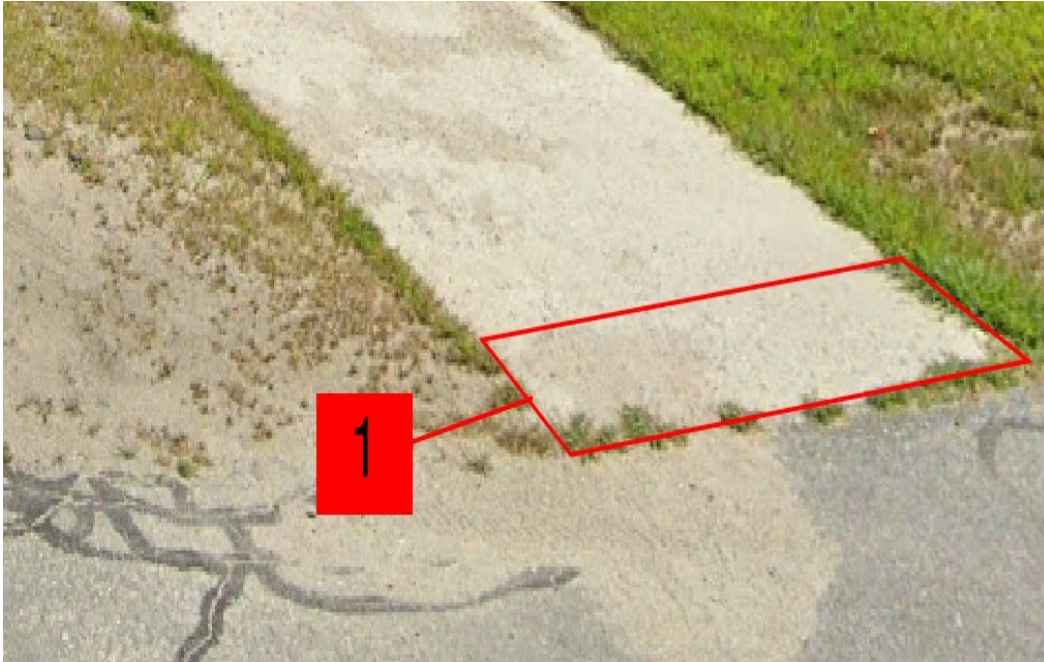
Pedestrian Ramp on River Street/Main Street intersection:

1. Install 4'x2' Detectable Warning Field
2. Grade, Loam and Seed any disturbed areas

Latitude: 43.810174

Longitude: -70.886238

Reference: Standard Detail 801(12)



**POR ADA#4/CR10921**

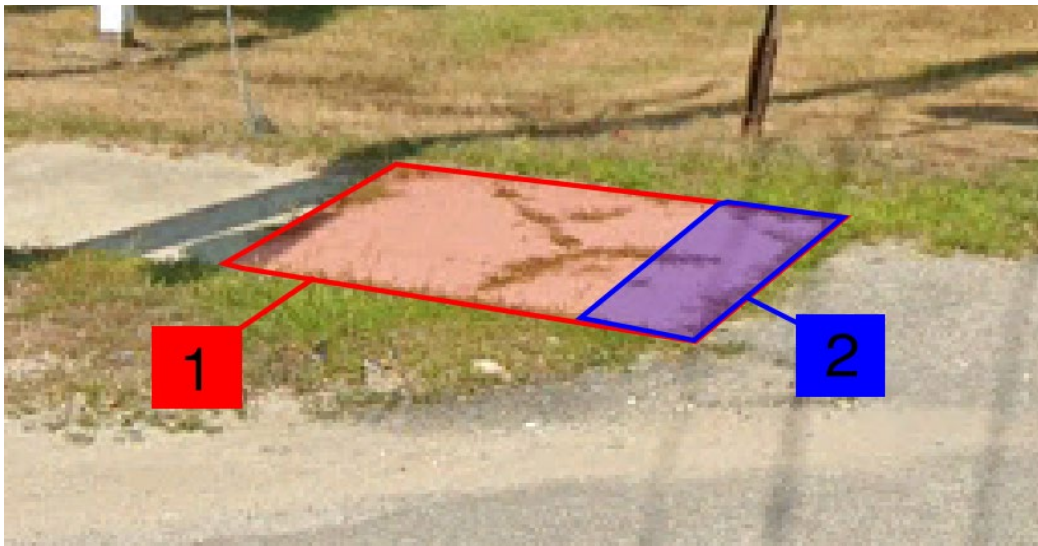
Pedestrian Ramp on River Street/Main Street intersection:

1. Install 4'x2' Detectable Warning Field
2. Grade, Loam and Seed any disturbed areas

Latitude: 43.810174

Longitude: -70.886238

Reference: Standard Detail 801(12)



**POR ADA#5/CR10922**

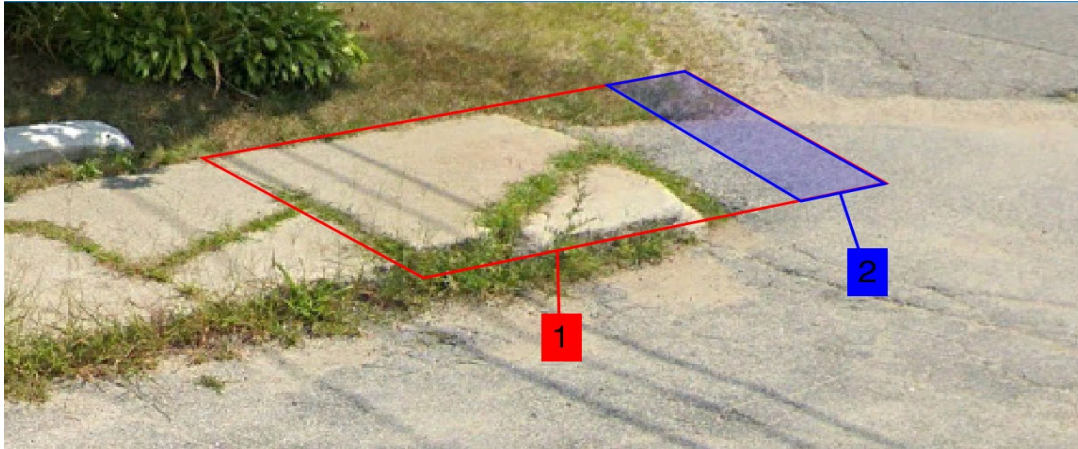
Pedestrian Ramp on Maple Street/Main Street Intersection:

1. Remove, Regrade & Install 5'x8' of Reinforced Concrete Sidewalk
2. Install 4'x2' Detectable Warning Field
3. Grade, Loam and Seed any disturbed areas

Latitude: 43.810444

Longitude: -70.885542

Reference: Standard Detail 801(22)



**POR ADA#6/CR10923**

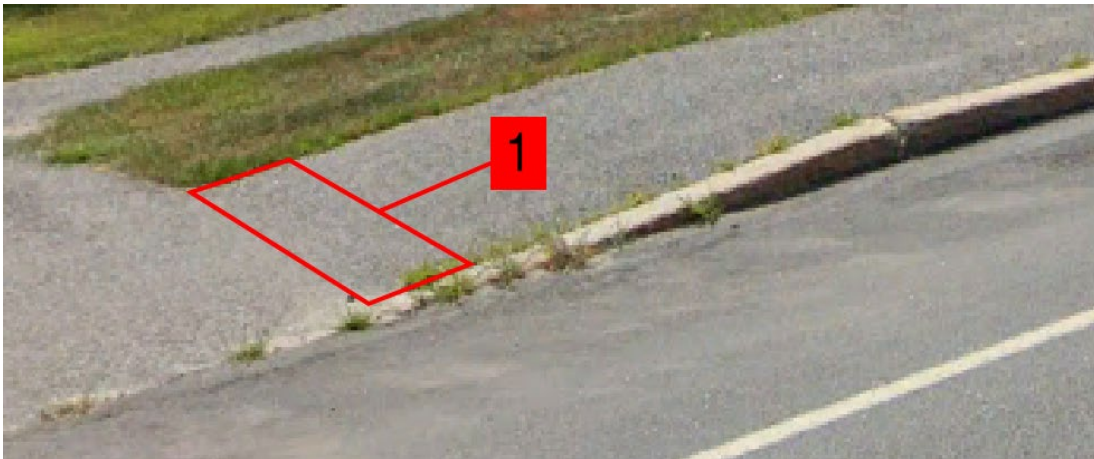
Pedestrian Ramp on Maple Street/Main Street intersection:

1. Remove, Regrade & Install 5'x8' of Reinforced Concrete Sidewalk
2. Install 4'x2' Detectable Warning Field
3. Grade, Loam and Seed any disturbed areas

Latitude: 43.810444

Longitude: -70.885542

Reference: Standard Detail 801(22)



**POR ADA#7/CR14387**

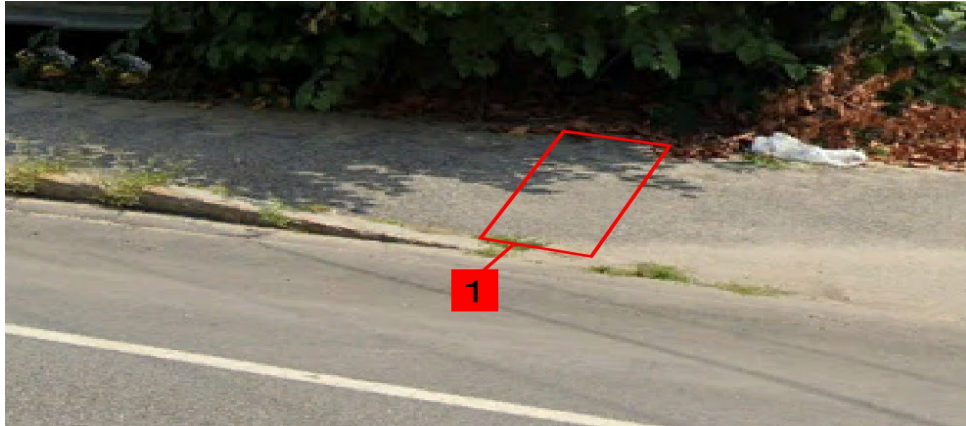
Pedestrian Ramp on Bobbin Mill Road/Main Street Intersection:

1. Install 4'x2' Detectable Warning Field

Latitude: 43.812544

Longitude: 70.880312

Reference: Standard Detail 801(12)



**POR ADA#8**

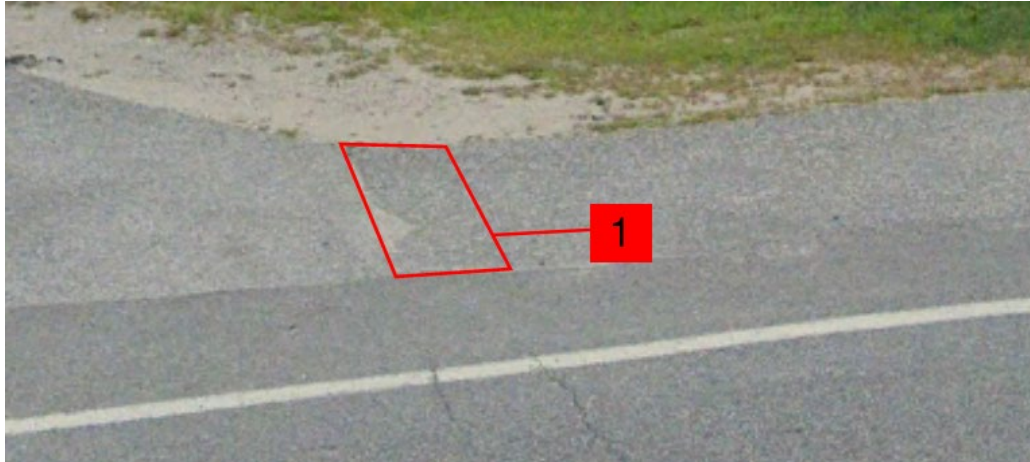
Pedestrian Ramp on Bobbin Mill Road/Main Street Intersection:

1. Install 4'x2' Detectable Warning Field

Latitude: 43.812513

Longitude: -70.880259

Reference: Standard Detail 801(12)



**POR ADA#9/CR10926**

Pedestrian Ramp on Allard Circle/Main Street Intersection:

1. Install 4'x2' Detectable Warning Field

Latitude: 43.812806

Longitude: -70.878098

Reference: Standard Detail 801(12)