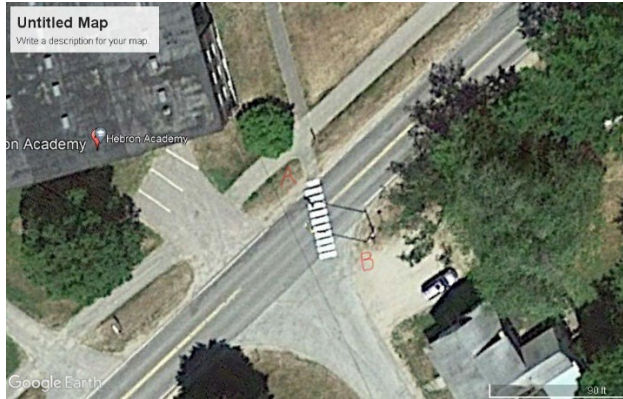


24809.00 Region 3 ADA Improvements



Hebron – Intersection of 119 & Old Country RD

A

- 8 - 10 SF Curb Ramp Detectable Warning
- 5 SY Regrading Sidewalk

B

- 8 - 10 SF Curb Ramp Detectable Warning
- 5 SY Regrading Sidewalk



Hebron – Intersection of 119 & Perkins Drive

A

- 16 SF Curb Ramp Detectable Warning
- 5 SY Regrading Sidewalk

B

- 16 SF Curb Ramp Detectable Warning
- 5 SY SF Curb Ramp Detectable Warning



Paris – INT High ST, Swallow & Hathaway RD

A

- 8 - 10 SF Curb Ramp Detectable Warning
- 5 SY Regrading Sidewalk
- 8 LF Bituminous Curb

B

- 8 - 10 SF Curb Ramp Detectable Warning.
- 5 SY Regrading Sidewalk
- 8 LF Bituminous Curb



Paris – Int. of Meadow Lane & High Street

A

- 8 - 10 SF Curb Ramp Detectable Warning
- 5 SY Regrading Sidewalk
- 8 LF Bituminous Curb

B

- 8 - 10 SF Curb Ramp Detectable Warning
- 5 SY Regrading Sidewalk
- 8 LF Bituminous Curb



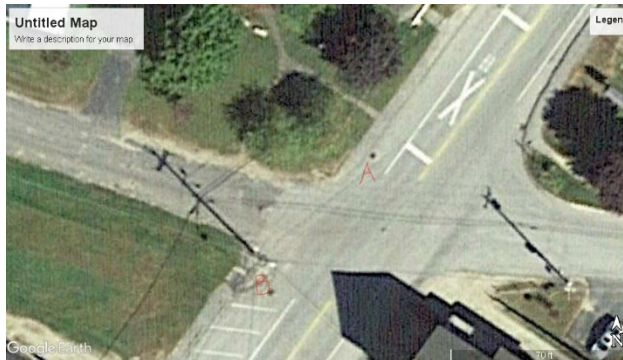
West Paris – Int. of Kingsbury Road & Main Street

A

- 8 - 10 SF Curb Ramp Detectable Warning
- 5 SY Regrading Sidewalk
- 8 LF Bituminous Curb

B

- 8 - 10 SF Curb Ramp Detectable Warning
- 5 SY Regrading Sidewalk
- 8 LF Bituminous Curb
- Turning Landing



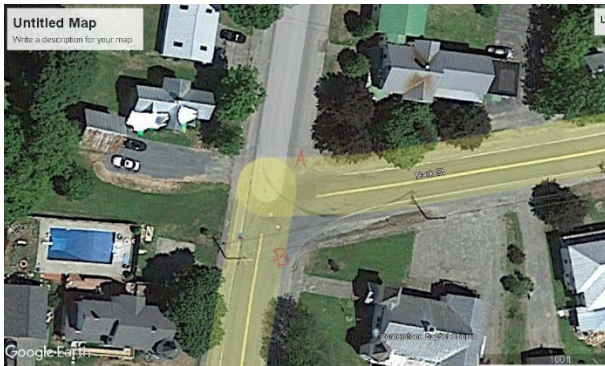
West Paris – Int. of Maple & Main Street

A

- 8 - 10 SF Curb Ramp Detectable Warning
- 5 SY Regrading Sidewalk
- 8 LF Bituminous Curb

B

- 8 - 10 SF Curb Ramp Detectable Warning
- 10 SY Regrading Sidewalk
- Smooth out turn in sidewalk approaching end of ramp.



Madison – Int. Weston Ave & Park Street

A

- 8 - 10 SF Curb Ramp Detectable Warning
- 5 SY Regrading Sidewalk
- Needs Turning Landing

B

- 8 - 10 SF Curb Ramp Detectable Warning
- 5 SY Regrading Sidewalk
- 8 LF Terminal Curb Type 1



Madison – Weston Ave Post Office Crossing

A

- Remove broken pavement from shoulder
- Compact existing material
- Repave shoulder area

B

- 8 - 10 SF Curb Ramp Detectable Warning
- 5 SY Regrading Sidewalk
- 8 LF Terminal Curb Type 1
- Needs Turning Landing