

# MAINEDOT PILOT SOLAR PROJECT RFP PRE-PROPOSAL MEETING

## AGENDA:

1. INTRODUCTION
2. SCHEDULE
3. SITE REVIEW
4. SPECIAL ITEMS TO NOTE

Welcome. The meeting will start momentarily.

June 3, 2020

# SCHEDULE

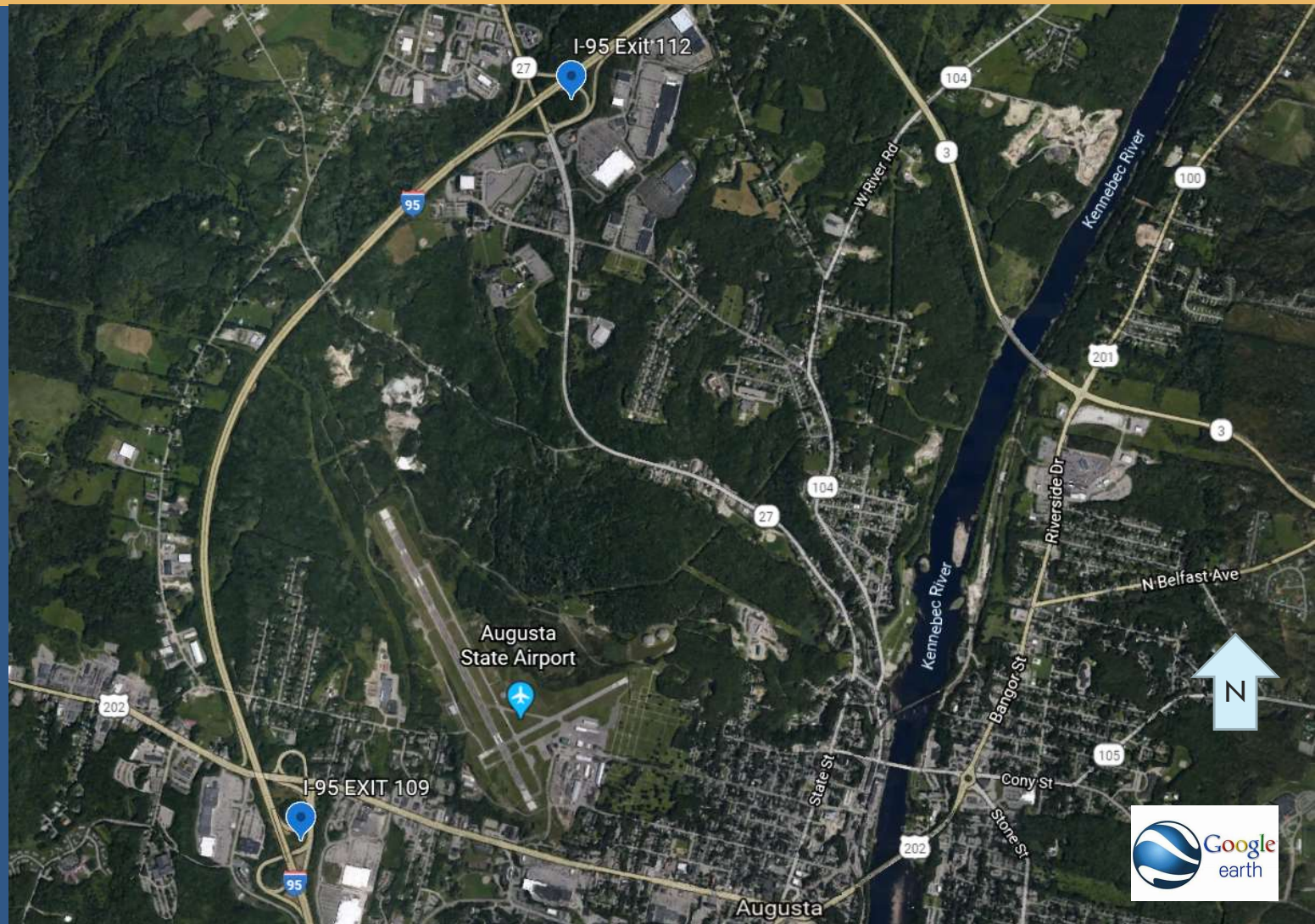
- June 10, 2020: Request for Information (RFI) due
- June 17, 2020: MaineDOT's response to RFIs posted at <https://www.maine.gov/mdot/contractors/>
- July 1, 2020: Proposal due by 1:00pm Eastern Standard Time. Email proposals to [david.gardner@maine.gov](mailto:david.gardner@maine.gov)

# SOLAR SITES

I-95 EXIT 109

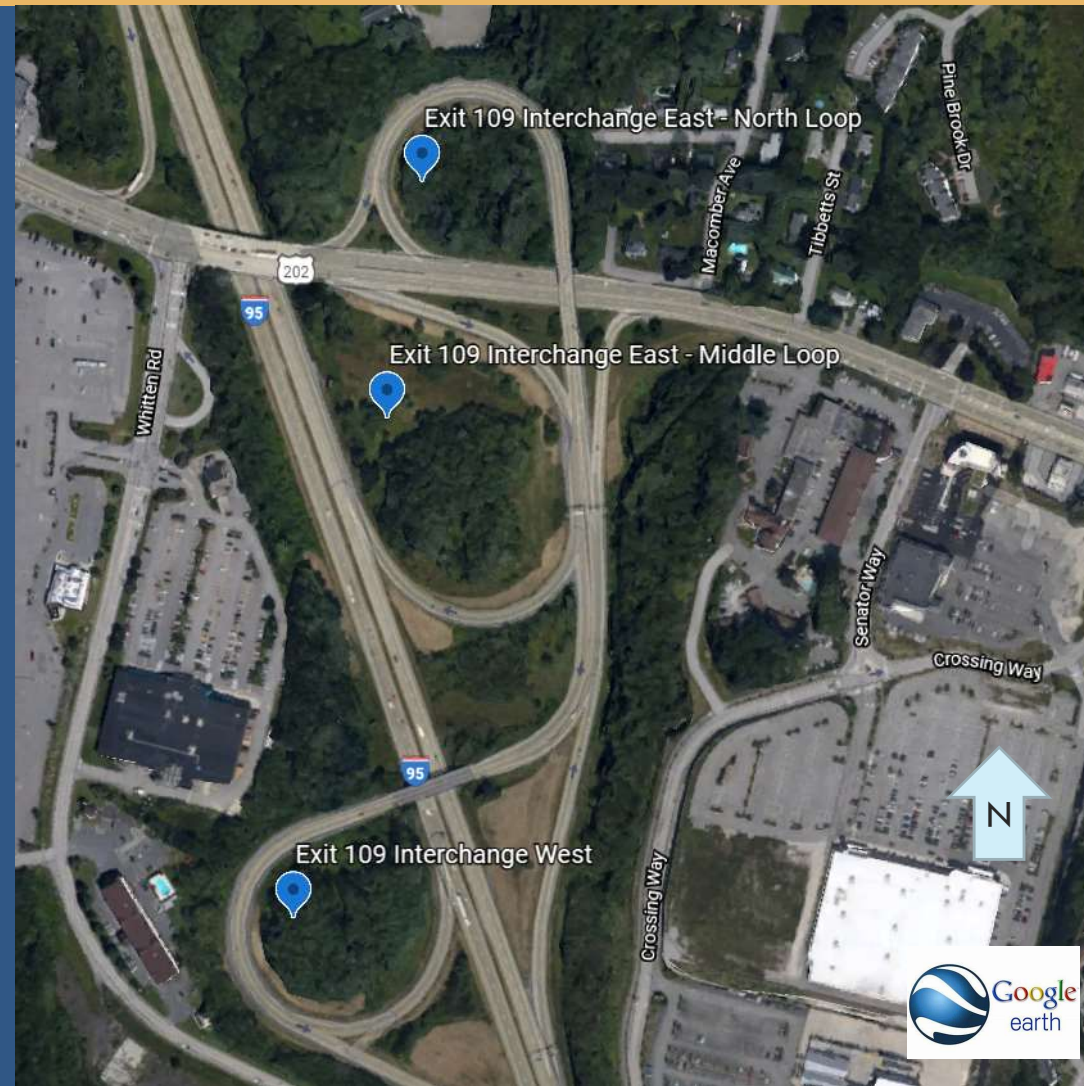
I-95 EXIT 112

# AUGUSTA STATE AIRPORT



# I-95 EXIT 109

- Exit 109 consists of:
  - West Interchange
  - East Interchange Middle and North.
- Interchange West and Interchange East have different CMP interconnection applications with separate interconnection points, but on the same substation.
- All three must be bid on as one site.
- Large vegetation has been cleared.



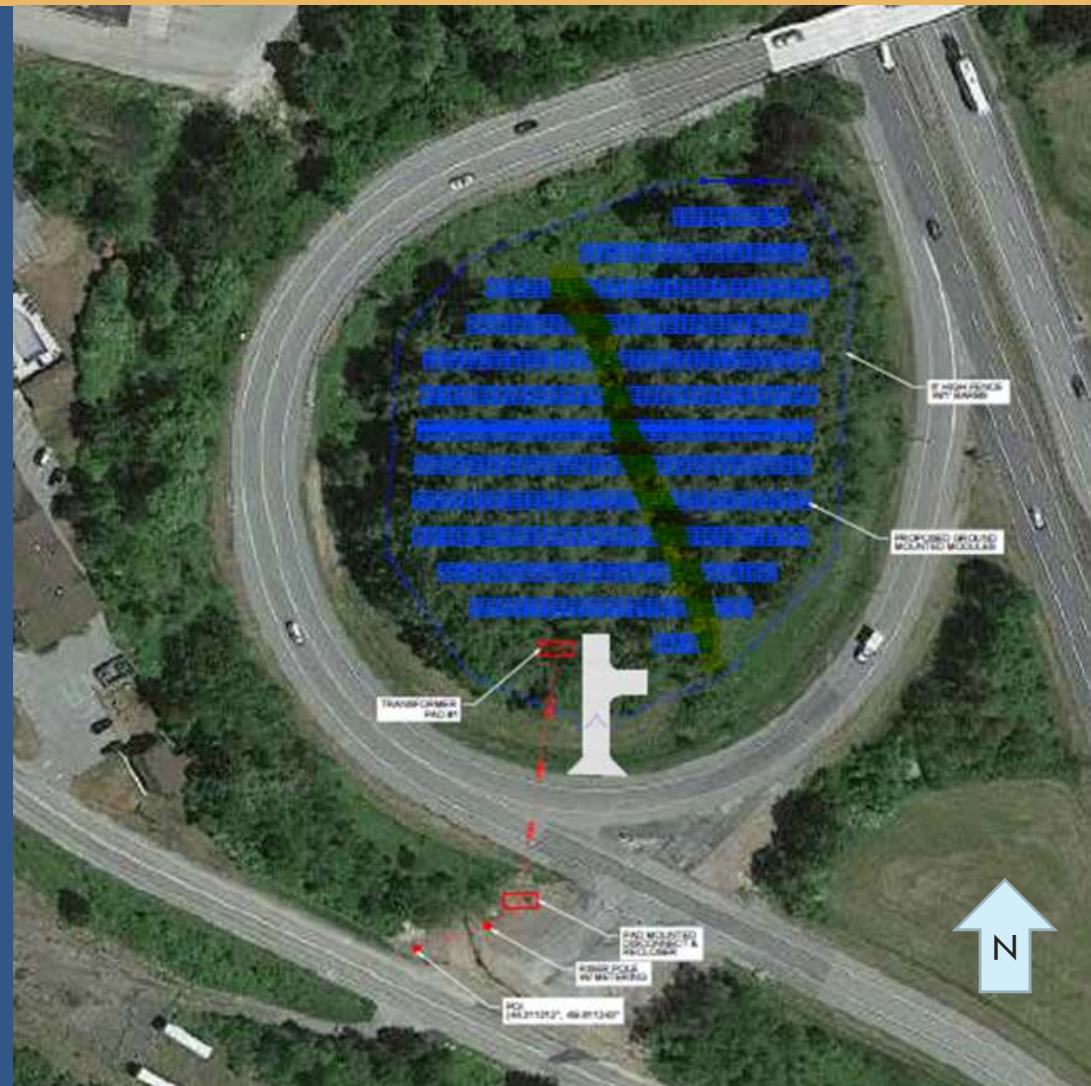
# I-95 EXIT 109- INTERCHANGE WEST

- Currently in the CMP interconnection feasibility and impact study phase.
- Anticipated study completion on June 16, 2020.
- Interconnection at Whitten Road in Augusta
- Capitol Street Substation
- Generation size: 500 kW AC
- Access is set.



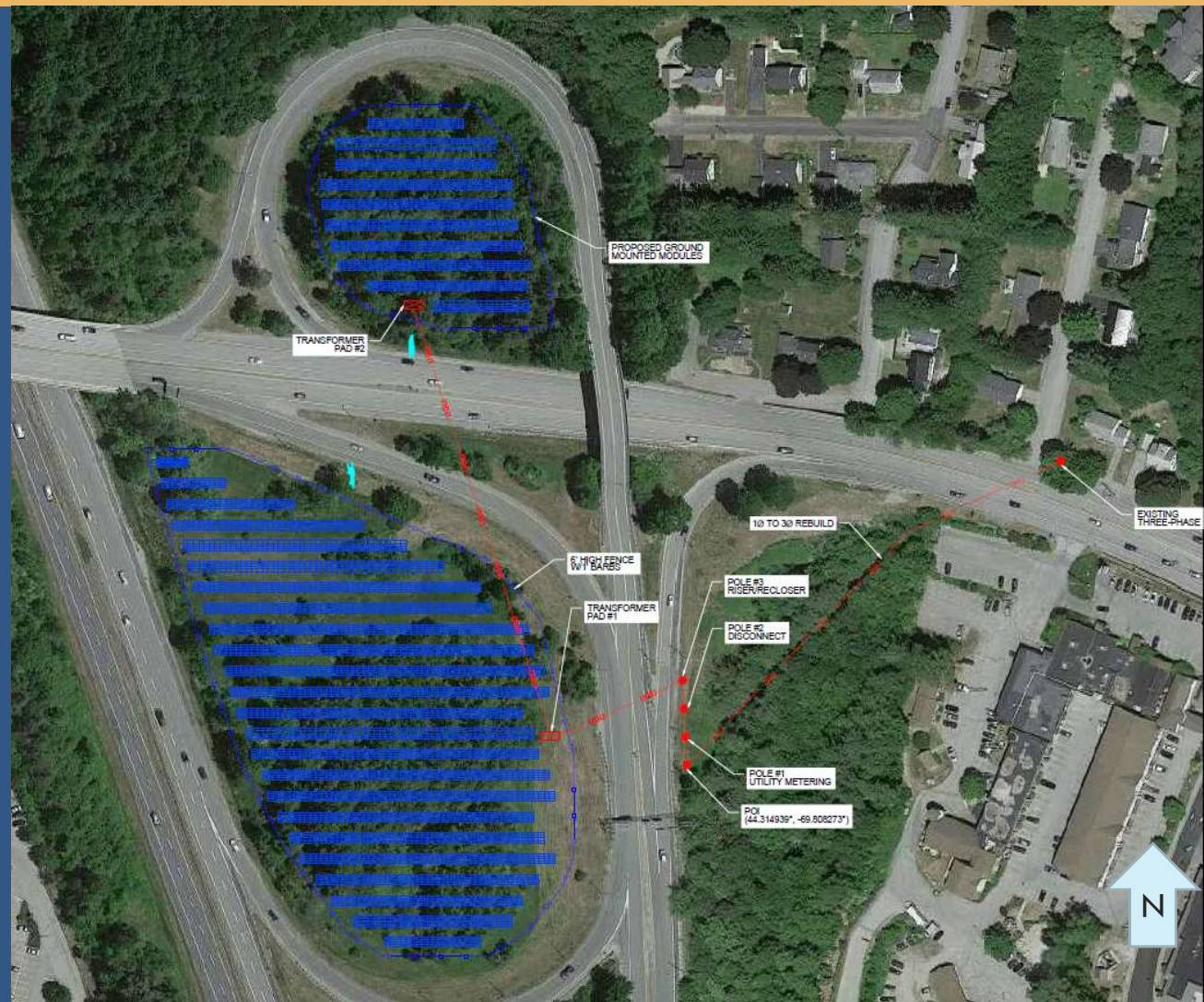
# I-95 EXIT 109- INTERCHANGE WEST-UPDATE

- Stream runs through the West Interchange
- Must avoid spanning the stream with panels.
- Panels can go to edge of stream. One-line diagram is being edited to capture this.
- Most likely will reduce generation.
- This drawing is just for discussion. The site is being redesigned to take the stream into account.



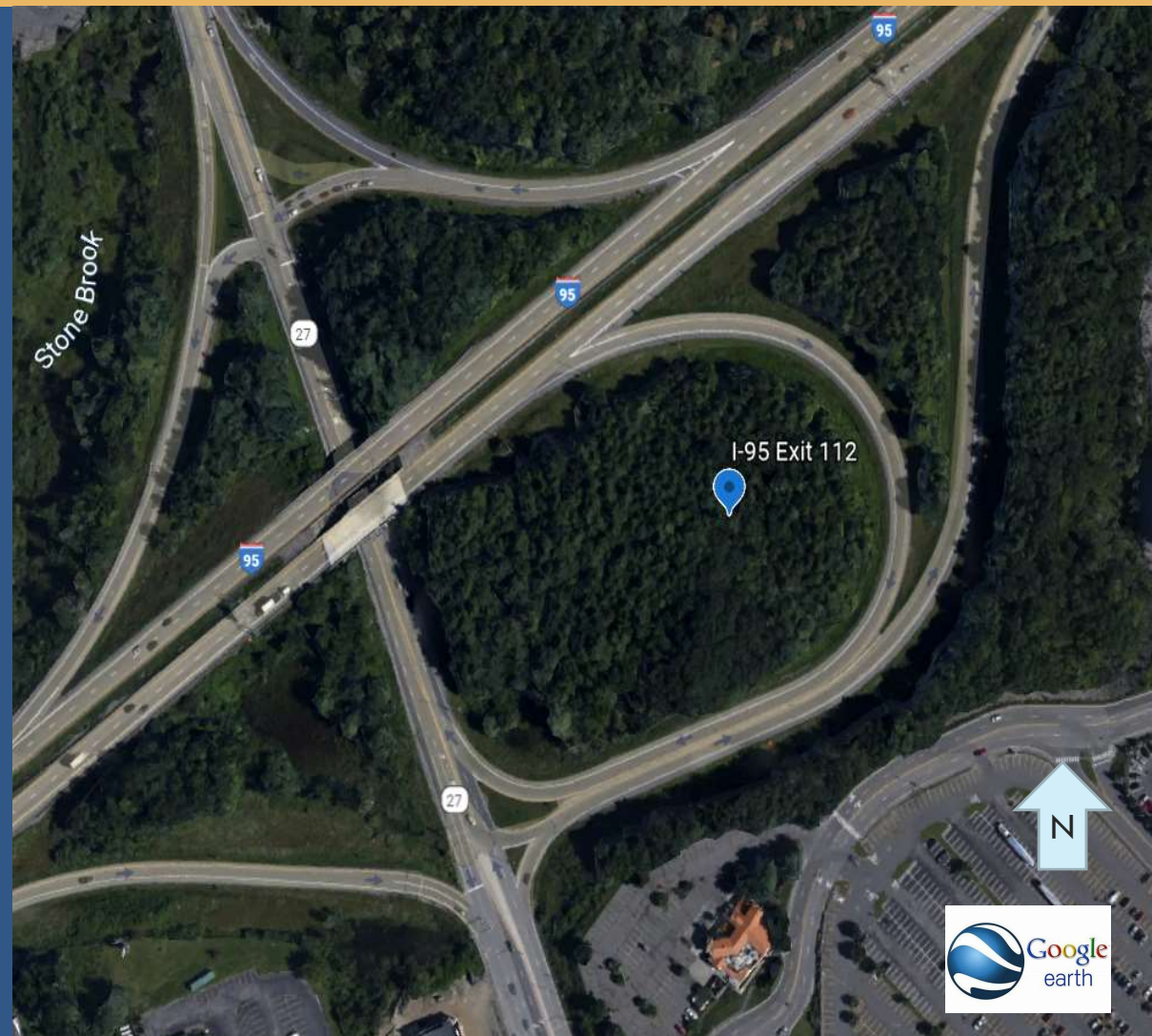
# I-95 EXIT 109 INTERCHANGE EAST

- Includes North and Middle Loops
- Currently in the CMP interconnection feasibility and impact study phase.
- Anticipated study completion on June 16, 2020.
- Interconnection at 109 North off ramp near Whiten Road in Augusta
- Capitol Street Substation
- Generation size: 1.703 MW AC
- Access is set.



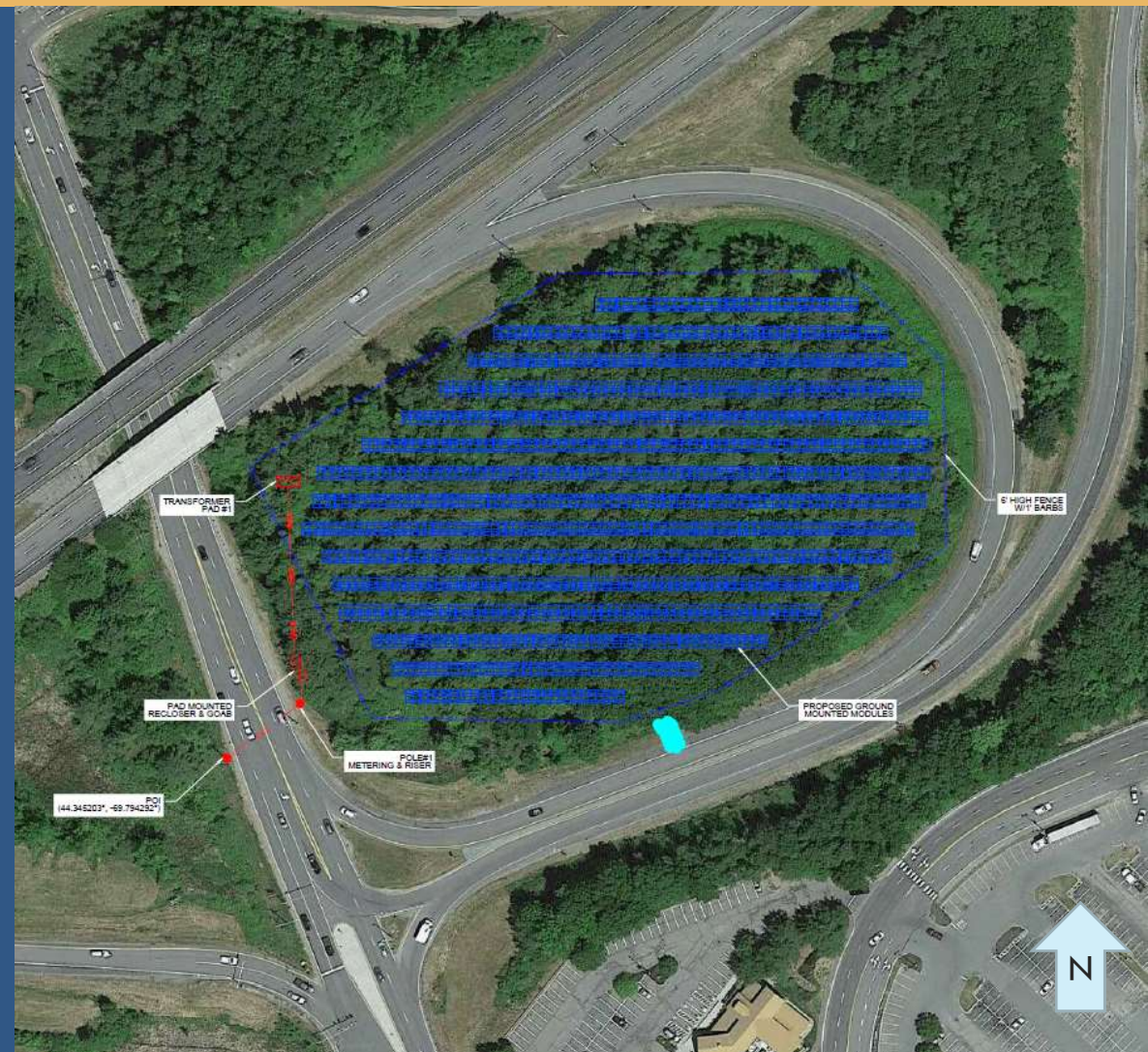
# I-95 EXIT 112

- Exit 112 consists of:
  - North on/off ramp loop
- Exit 112 must be bid on as one site.
- Large vegetation has been cleared.



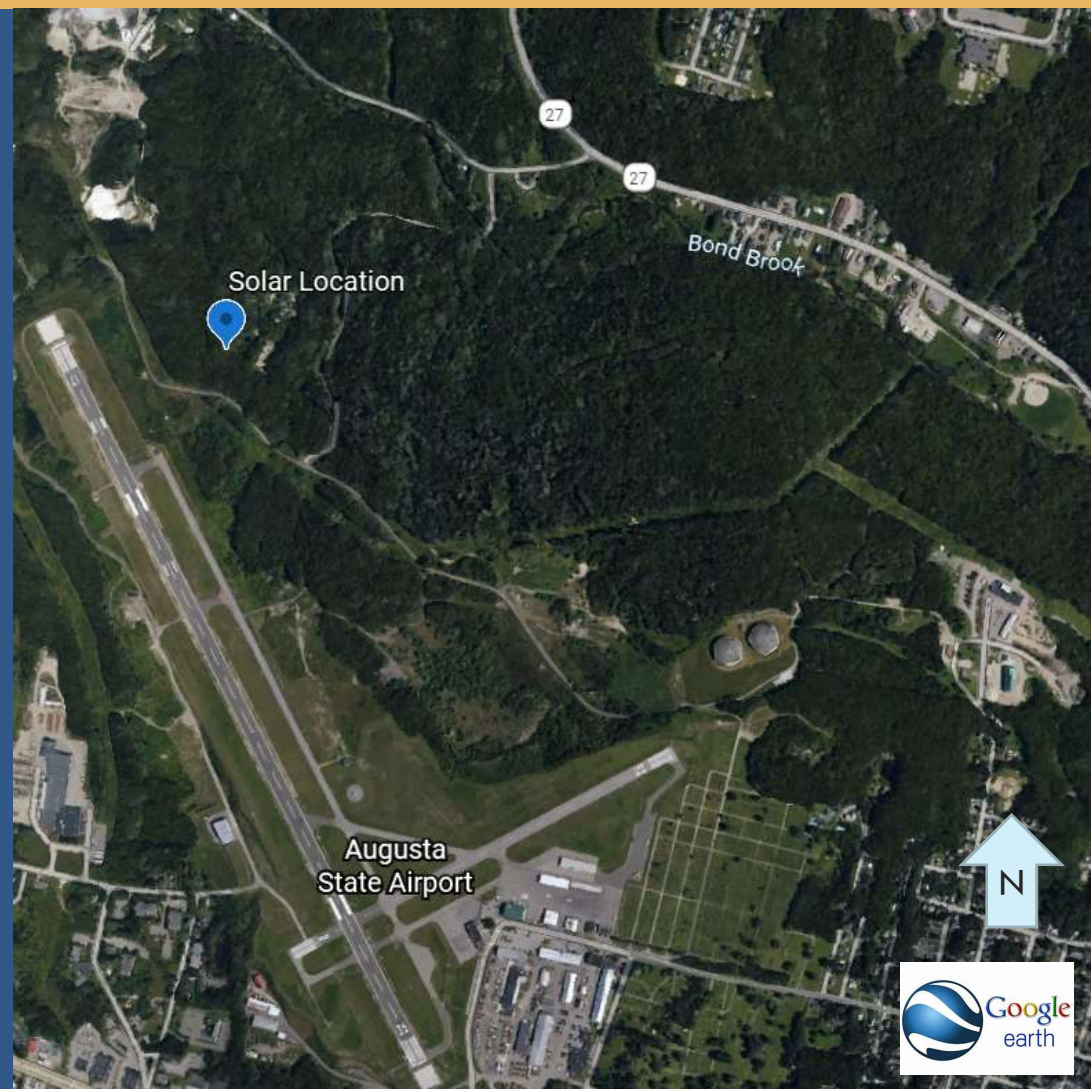
# I-95 EXIT 112

- Interconnection Application has been submitted to CMP. Currently in Queue position #4.
- Interconnection at Civic Center Drive in Augusta
- North Augusta Substation
- Generation size: 1.25 MW AC
- Access is set.



# AUGUSTA STATE AIRPORT

- The airport site consists of approximately 35 acres on the northeasterly side of the airport.
- Large vegetation has not been cleared.
- The airport access roads can not be blocked.



# AUGUSTA STATE AIRPORT

- Currently in the CMP interconnection feasibility and impact study phase.
- Anticipated study completion on June 16, 2020.
- Interconnection at Bond Brook Road in Augusta
- Bond Brook Substation
- Generation size: 4.875 MW AC



# AUGUSTA STATE AIRPORT

- Construction Access - Twin Pines Road has a 12' wide bridge over Bond Brook.



# SPECIAL ITEMS TO NOTE

- Repayment to MaineDOT for interconnection applications and CMP studies will be due upon executed agreement with selected Bidder(s).
  - Exit 109: \$38,000
  - Exit 112 \$29,375
  - Augusta State Airport: \$32,965
- MaineDOT expects the I-95 Exit 109 site to be constructed and operational by the end of 2021.
- Environmental Permits for Exit 109 and 112 will be completed by MaineDOT.
- Stream located on Exit 109 West Interchange.
- Footage of I-95 sites are available in Appendix G on the MaineDOT webpage.
- Form of Contract.

# REQUEST FOR INFORMATION

- MaineDOT will not be taking any questions during this meeting.
- All questions must be submitted on the Request for Information Form (RFI) in Appendix F of the RFP.
- RFIs are due on June 10, 2020.
- RFIs must be submitted to David Gardner at [david.gardner@maine.gov](mailto:david.gardner@maine.gov)
- All RFIs will be responded to in writing and posted on the MaineDOT website at <https://www.maine.gov/mdot/contractors/>. (Same place as RFP).
- Reponses to RFIs will be posted by June 17, 2020.