

WIN 24807.00 Region 4 Pedestrian Ramp Report



WIN 24807.00 Mount Desert – Route 102

Asset # CR12707

Remove Pedestrian Ramp and Regrade as Typical Sidewalk Section at 1091 Main Street, Mount Desert

- Eliminate existing midblock curb ramp opening
- Install 6' of granite curb
- Remove and reset 16' granite curb
- Regrade and pave 22' x 5' sidewalk

Latitude 44.365785°

Longitude -68.331453°

WIN 24807.00 Mount Desert – Route 102

Asset # CR12709

Remove Pedestrian Ramp and Regrade as Typical Sidewalk Section at 1099 Main Street, Mount Desert

- Eliminate existing crossing
- Grade and pave (2) areas 8' x 5' sidewalk

Latitude 44.364456°

Longitude -68.332195°

WIN 24807.00 Region 4 Pedestrian Ramp Report

WIN 24807.00 Mount Desert – Route 102

Asset # CR12716

Reconstruct Pedestrian Ramp at 1132 Main Street, Mount Desert

- Construct per SD 801(13)
- Remove and reset 24' granite curb
- Grade and pave 30' x 5' sidewalk
- Install 6' x 2' Detectable Warning Field

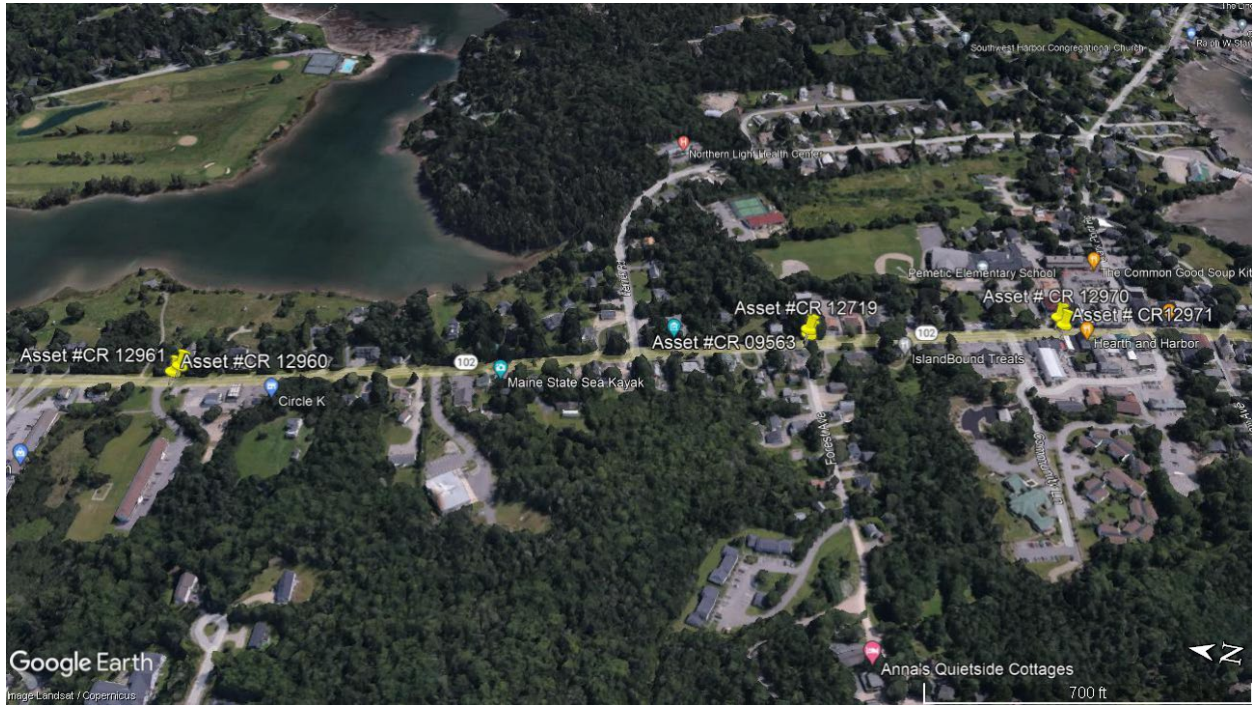
Latitude 44.360472°

Longitude -68.336099°



MDI ADA.kmz

WIN 24807.00 Region 4 Pedestrian Ramp Report



WIN 24807.00 Southwest Harbor – Route 102

Asset # CR12960

Reconstruct Pedestrian Ramp at 217 Main Street, Southwest Harbor

- Excavate and place new gravel for 6' x 6' sidewalk pad
- Pave 6' x 6' sidewalk pad
- Install 6' x 2' Detectable Warning Field
- Install Pedestrian Signage

Latitude 44.287559°

Longitude -68.328748°

WIN 24807.00 Southwest Harbor – Route 102

Asset # CR12961

Reconstruct Pedestrian Ramp at 217 Main Street, Southwest Harbor

- Construct per SD 801(27)
- Remove 5' of existing granite curb
- Remove and reset 8' existing granite curb
- Grade and pave 13' x 5' sidewalk
- Install 6' x 2' Detectable Warning Field

WIN 24807.00 Region 4 Pedestrian Ramp Report

WIN 24807.00 Southwest Harbor – Route 102

Asset # CR12961 (continued)

- Install Pedestrian Signage

Latitude 44.287572°

Longitude -68.3328594°

WIN 24807.00 Southwest Harbor – Route 102

Asset # CR09563

Reconstruct Pedestrian Ramp at 293 ME, Southwest Harbor

- Construct per SD 801(22)
- Grade and pave 12' x 4' sidewalk
- Install 6' x 2' Detectable Warning Field
- Install Pedestrian Signage

Latitude 44.282538°

Longitude -68.326933°

WIN 24807.00 Southwest Harbor – Route 102

Asset # CR12719

Reconstruct Pedestrian Ramp at 293 ME, Southwest Harbor

- Construct per SD 801(27)
- Remove 5' of existing granite curb
- Remove and reset 8' existing granite curb
- Grade and pave 13' x 5' sidewalk
- Install 6' x 2' Detectable Warning Field
- Install Pedestrian Signage

Latitude 44.282573°

Longitude -68.326803°

WIN 24807.00 Region 4 Pedestrian Ramp Report

WIN 24807.00 Southwest Harbor – Route 102

Asset # CR12971

Reconstruct Pedestrian Ramp at 332 Main Street, Southwest Harbor

- Construct per SD 801(14)
- Reduce curb ramp opening
- Install 4' of granite curb
- Remove and reset 4' granite curb
- Grade and pave 16' x 9' sidewalk
- Adjust existing RRFB button height to 42"
- Install 5' x 2' Detectable Warning Field

Latitude 44.280405°

Longitude -68.326206°

WIN 24807.00 Southwest Harbor – Route 102

Asset # CR12970

Reconstruct Pedestrian Ramp at 332 Main Street, Southwest Harbor

- Construct per SD 801(14)
- Extend level landing to existing RRFB
- Grade and pave 6' x 5' landing
- Remove and reset 8' granite curb
- Grade and pave 20' x 5' sidewalk
- Adjust existing RRFB button height to 42"
- Install 5' x 2' Detectable Warning Field

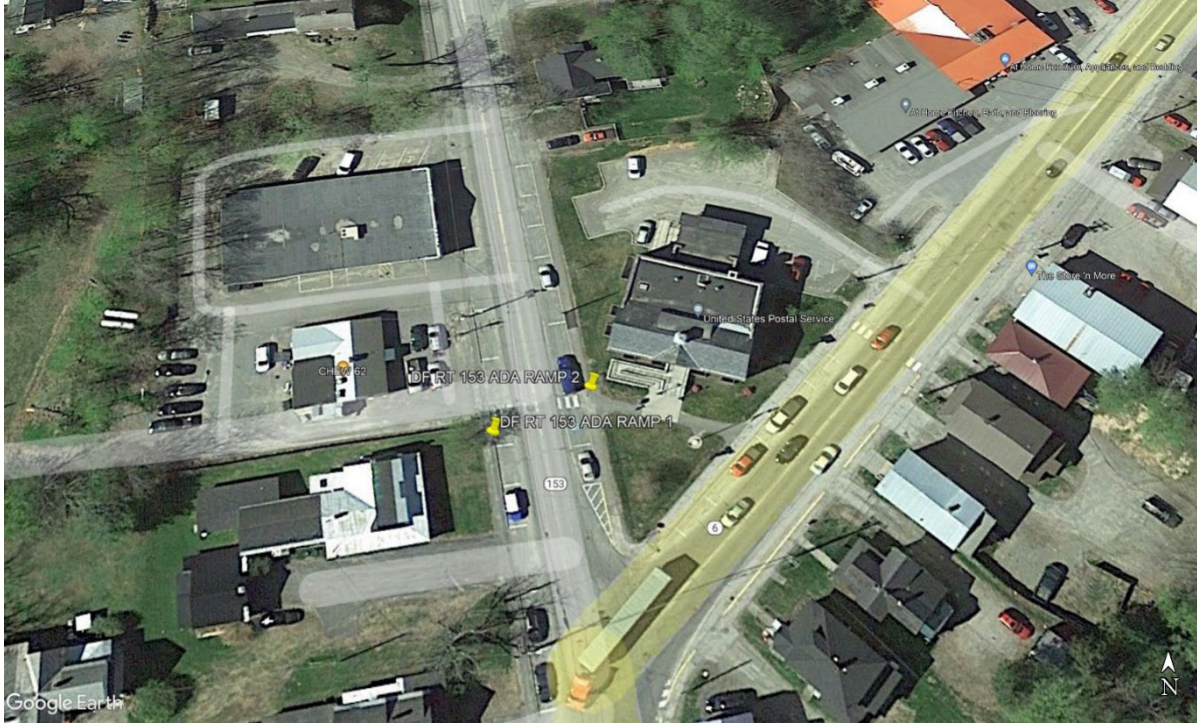
Latitude 44.28046°

Longitude -68.326002°



Southwest Harbor
ADA.kmz

WIN 24807.00 Region 4 Pedestrian Ramp Report



WIN 24807.00 Dover Foxcroft – Route 153

No Asset # - DF RT 153 ADA Ramp 1

Reconstruct Pedestrian Ramp at 42 North Street, Dover Foxcroft

- Construct per SD 801(27)
- Relocate crosswalk landing area approximately 12' to the South
- Remove and reset 8' granite curb
- Grade and pave 15' x 5' sidewalk
- Install 5' x 2' Detectable Warning Field
- Install Pedestrian Signage

Latitude 45.185959°

Longitude -69.231421°

WIN 24807.00 Region 4 Pedestrian Ramp Report

WIN 24807.00 Dover Foxcroft – Route 153

No Asset # - DF RT 153 ADA Ramp 2

Reconstruct Pedestrian Ramp at 42 North Street, Dover Foxcroft

- Construct per SD 801(14)
- Grade and pave 22' x 5' sidewalk
- Install 5' x 2' Detectable Warning Field
- Install Pedestrian Signage

Latitude 45.186029°

Longitude -69.231244°

WIN 24807.00 Region 4 Pedestrian Ramp Report



WIN 24807.00 Dover Foxcroft – Route 15

Asset #CR13707 - DF RT 15 ADA Ramp 1

Reconstruct Pedestrian Ramp at 199 ME, Dover Foxcroft

- Construct per SD 801(26)
- Remove and reset 19' granite curb
- Grade and pave 29' x 9' sidewalk
- Install 6' x 2' Detectable Warning Field

Latitude 45.182950°

Longitude -69.221099°

WIN 24807.00 Dover Foxcroft – Route 15

Asset #CR13707 - DF RT 15 ADA Ramp 2

Reconstruct Pedestrian Ramp at 199 ME, Dover Foxcroft

- Remove and reset 16' granite curb
- Grade and pave 20' x 6' sidewalk
- Install 6' x 2' Detectable Warning Field

Latitude 45.182795°

Longitude -69.221224°

WIN 24807.00 Region 4 Pedestrian Ramp Report

WIN 24807.00 Dover Foxcroft – Route 15

No Asset - DF RT 15 ADA Ramp 4

Reconstruct Pedestrian Ramp at 202 ME, Dover Foxcroft

- Remove 6' of existing granite curb
- Remove and reset 17' granite curb
- Grade and pave 21' x 5' sidewalk
- Install 6' x 2' Detectable Warning Field

Latitude 45.182950°

Longitude -69.221099°

WIN 24807.00 Dover Foxcroft – Route 15

No Asset - DF RT 15 ADA Ramp 3

Reconstruct Pedestrian Ramp at 202 ME, Dover Foxcroft

- Saw cut & remove existing HMA for DWF
- Install 6' x 2' Detectable Warning Field

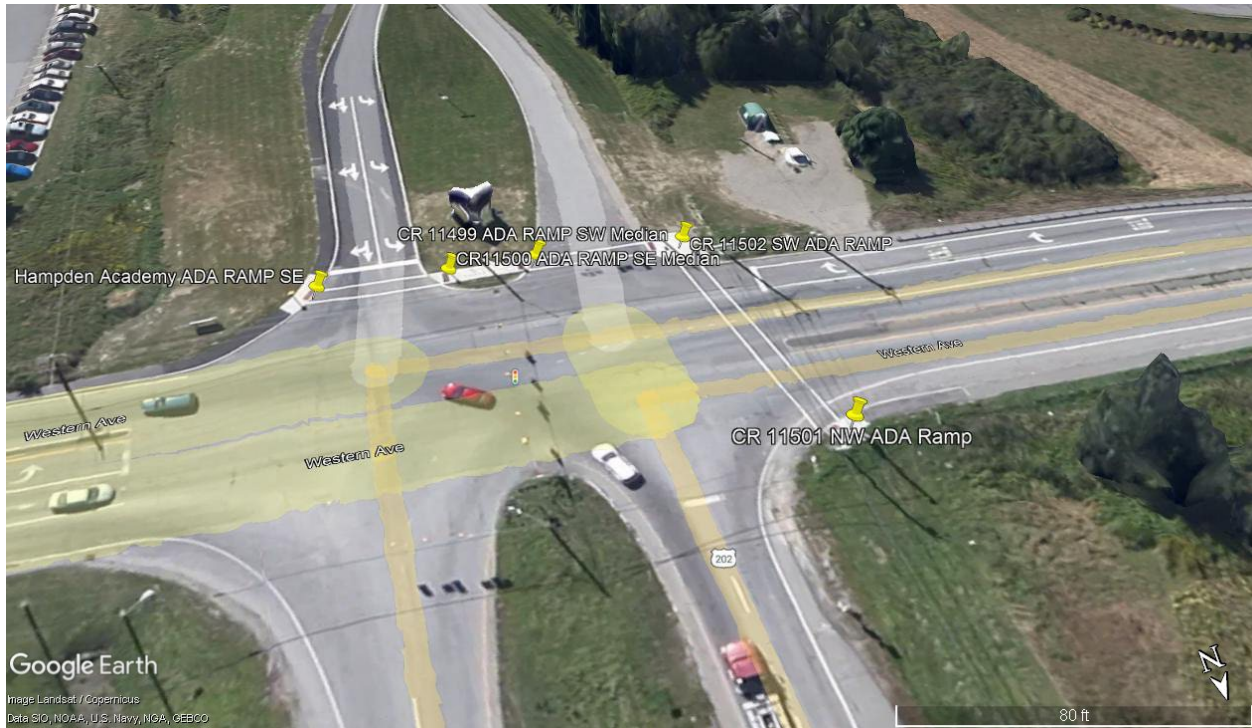
Latitude 45.182722°

Longitude -69.221048°



DF RT 15 & 153 ADA
RAMPS.kmz

WIN 24807.00 Region 4 Pedestrian Ramp Report



WIN 24807.00 Hampden – Route 9 & 202

Asset # CR11501

Reconstruct Pedestrian Ramp at 93 State Rt 9, Hampden

- Construct per SD 801(22)
- Remove existing Concrete ADA ramp
- Regrade and pave 13' x 6' sidewalk, new surface shall be HMA
- Install 5' x 2' Detectable Warning Field

Latitude 44.74496°

Longitude -68.846009°

WIN 24807.00 Hampden – Route 9 & 202

Asset # CR11502

Reconstruct Pedestrian Ramp at State Rt 9, Hampden

- Construct two ramps and landing area per SD 801(15)
- Remove existing concrete ADA ramp and landing area
- Grade and pave 16' x 15' sidewalk, new surface shall be HMA
- Install (2) 5' x 2' Detectable Warning Field
- Remove and reset 12' granite curb

WIN 24807.00 Region 4 Pedestrian Ramp Report

WIN 24807.00 Hampden – Route 9 & 202

Asset # CR11502 (continued)

- Install 5' of granite curb

Latitude 44.74496°

Longitude -68.846009°

WIN 24807.00 Hampden – Route 9 & 202

Asset # CR11500 & CR11499

Reconstruct Pedestrian Ramp at State Rt 9, Hampden

- Remove existing concrete island crossing
- Regrade and pave 34' x 6' sidewalk (island crossing), new surface shall be HMA
- Install (2) 5' x 2' Detectable Warning Field

Latitude 44.74496°

Longitude -68.846009°

WIN 24807.00 Hampden – Route 9 & 202

No Asset # - Hampden Academy ADA Ramp SE

Reconstruct Pedestrian Ramp at State Rt 9, Hampden

- Construct per SD 801(20)
- Remove existing concrete ADA ramp
- Grade and pave 31' x 6' sidewalk, new surface shall be HMA
- Install 5' x 2' Detectable Warning Field
- Remove and place (2) 13' runs of slipform curb

Latitude 44.74496°

Longitude -68.846009°



Hampden Rt. 202 &
Academy Drive ADA R