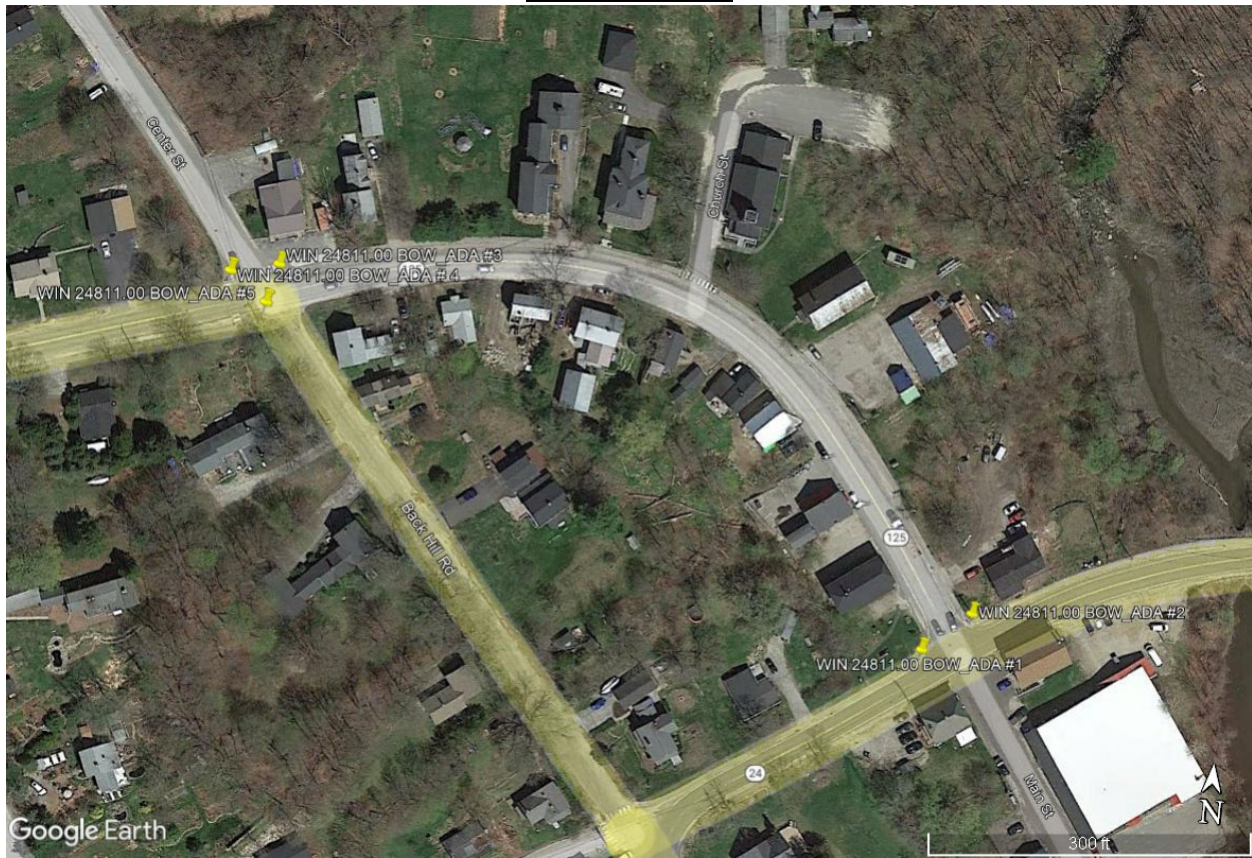


# WIN 24811.00 Region 2 Pedestrian Ramp Report

## Bowdoinham



### WIN 24811.00 BOW ADA#1

No Asset # - BOW #1

Reconstruct Pedestrian Ramp on South side of Route 125/Main St at Route 24, Bowdoinham.

- On Route 24: Cut existing sidewalk, curb and 2' into Route 24 23' back from front of Route 125 curb. From East point of current D.W.F. make a mark 3' into Route 24. Cut along Route 24 North from 2' cut in sidewalk through the 3' mark ending 2' beyond Route 125 curb. Cut West from Route 24 to break in curb 6' West of catch basin. Maintain 2' offset around catch basin to break in curb. Remove Granite curb and old HMA.
- Adjust Catch Basin to grade.
- On Route 125 install 12' radius Granite curb tip down (on 13' radius).
- On Route 24 reset 1- 7.8' section Granite curb. Install 1- 4.2' straight section Granite curb and 1- 8' Granite tip down both angled toward Route 24 center line enough to allow for a 6' x 2' diagonal Detectable Warning Field (DWF).
- Grade and repave 20' x 5' sidewalk, 8' x 5' area around catch basin and along both curb sections.
- Install 6' x 2' Diagonal Detectable Warning Field (DWF).
- Grade, Loam and seed 25' x 2' disturbed area.

Latitude 44.009067  
Longitude -69.896125  
Reference 801(22)

## WIN 24811.00 Region 2 Pedestrian Ramp Report

### WIN 24811.00 BOW ADA#2

No Asset # - BOW #2

Reconstruct Pedestrian Ramp on North side of Route 125/Main St at Route 24, Bowdoinham.

- Route 24: Cut existing sidewalk 5' wide to 20' North of current Route 125 curb. On Route 24 cut 2' out along curb from sidewalk cut South to 2' South of Route 125 curb.
- Route 125: Cut existing sidewalk 17' West of end of current tip down. On Route 125 cut 2' out along curb from sidewalk cut East to meet Route 24 cut. Remove Granite curb and old HMA.
- On Route 24 install 1 - 8' radius Granite tip down (13' radius) and 1 - 6.5' section straight Granite curb.
- On Route 125 install 18' Sloped Granite curb.
- Grade and repave 22' x 5' sidewalk and 22' x 2' shoulder on Route 24 and 17' x 4.5' sidewalk and 17' x 2' shoulder on Route 125 on Route 125.
- Install 6' x 2' Diagonal Detectable Warning Field (DWF).
- Grade, Loam and seed 21' x 2' disturbed area.

Latitude 44.009222

Longitude -69.895909

### WIN 24811.00 BOW ADA#3

No Asset # - BOW #5

Construct New Pedestrian Ramp at Northeast side of Route 125/Main St and Center St, Bowdoinham.

- At East end of existing "Tee Pee": cut Pavement 2' to East of tip down end by 10' wide. Cut 2' out along both sides of "Tee Pee" toward Center St 20' by 10' wide. Remove 4 sections of Granite curb and old HMA.
- Install 4 new 8' Granite tip downs for 5' sidewalk.
- Grade and repave 20' x 9'
- Install 4' x 2' Detectable Warning Field (DWF).

Latitude 44.009793

Longitude -69.898435

# WIN 24811.00 Region 2 Pedestrian Ramp Report

## WIN 24811.00 BOW ADA#4

No Asset # - BOW #6

Reconstruct Pedestrian Ramp at Northwest side of Route 125/Main St at Center St, Bowdoinham.

- Cut existing sidewalk at South end of tip down. Cut from end of tip down South to Route 125/Main St -12' x 4'. Remove existing Detectable Warning Field (DWF) and old HMA.
- No new curb.
- Grade and repave 12' x 4' (5 SY) sidewalk.
- Install 12' x 2' (Radius) Detectable Warning Field (DWF) from tip down to Main St.
- Grade, Loam and seed 12' x 2' disturbed area.
- Install crosswalk post and signs.

Latitude 44.009765

Longitude -69.898528

Reference 801(22)

## WIN 24811.00 BOW ADA #5

No Asset # - BOW #7

Reconstruct Pedestrian Ramp at Southwest side of Route 125/Main St at Backhill Road, Bowdoinham.

- Cut existing sidewalk from end of Granite tip down East 5' then cut a straight line to the utility pole. Remove existing Detectable Warning Field (DWF) and old HMA.
- Grade and repave 5' x 5' landing area. Excavate remaining triangle 4".
- Install 4' x 2' Detectable Warning Field (DWF).
- Grade, Loam and seed 20' x 3' triangle and disturbed area.
- Install crosswalk post and signs. Install a "Crosswalk Ahead" sign West of crosswalk.
- Curb up around pole

Latitude 44.009698

Longitude -69.898451



Bowdoinham  
ADA.kmz

# WIN 24811.00 Region 2 Pedestrian Ramp Report

## Camden



### WIN 24811.00 CAM\_ADA #1

No Asset # - CAM #1

Reconstruct Pedestrian Ramp at South East side of Route 52/Mountain Rd at Spring St, Camden.

- Cut existing sidewalk, curb and 2' into Route 52, 9' back from Spring St. Cut along curb to Spring St. Remove old HMA.
- Grade and pave 9' x 5' sidewalk and 9' x 2' shoulder.
- Install 8' Bituminous tip down.
- Install 4' x 2' Detectable Warning Field (DWF).
- Grade, Loam and seed 9' x 2' disturbed areas.

Latitude 44.215301  
Longitude -69.070023  
Reference 801(22)

## WIN 24811.00 Region 2 Pedestrian Ramp Report

### WIN 24811.00 CAM ADA #2

No Asset # - CAM # 2

Reconstruct Pedestrian Ramp on South West side of Route 52/Mountain Rd at Spring St, Camden.

- Cut existing sidewalk, curb and 5.5' into Mountain Rd 24.5' back from Spring St face of curb. Cut along Mountain Rd to 2' beyond Spring St face of curb (26.5').
- Cut existing sidewalk, curb and 2' into Spring St 14' back from Mountain Rd face of curb. Cut along curb to meet Mountain Rd cut (19.5'). Remove old HMA.
- Adjust water gate in Spring St sidewalk.
- Adjust Catch Basin to grade.
- Install 8' Bituminous tip down on Spring St and 13.5' curb on Mountain Rd.
- Grade and pave sidewalks, landing area and around Catch Basin.
- Install 6' x 2' (Diagonal or "L" shaped) Detectable Warning Field (DWF).
- Grade, Loam and seed 19' x 2' disturbed areas.

Latitude 44.215308  
Longitude -69.070038  
Reference 801(26)

### WIN 24811.00 CAM ADA #3

No Asset # - CAM #3

Reconstruct Pedestrian Ramp on South East side of Route 52/Mountain Rd at Grove St, Camden.

- Cut existing sidewalk, curb and 2' into Mountain Rd 8.5' back from Grove St. Cut along curb Southwest to Grove St. Remove old HMA.
- Install 8.5' Bituminous tip down.
- Grade and pave 8.5' x 5' sidewalk and 8.5' x 2' shoulder.
- Install 4' x 2' Detectable Warning Field (DWF).
- Grade, Loam and seed 8.5' x 2' disturbed area.

Latitude 44.215889  
Longitude -69.071085  
Reference 801(22)

# WIN 24811.00 Region 2 Pedestrian Ramp Report

## WIN 24811.00 CAM ADA #4

No Asset # - CAM #4

Reconstruct Pedestrian Ramp on Southwest side of Route 52/Mountain Rd at Grove St, Camden.

- Cut existing sidewalk, curb and 5' into Mountain Rd 21' back from Grove St. Cut along curb to Grove St. Remove old HMA.
- Adjust catch basin to grade.
- Grade sidewalk to be 5' wide at Grove St. Pave 21' x 4' to 5' sidewalk and 5' of shoulder.
- Install 16' Bituminous Curb.
- Install 4' x 2' Detectable Warning Field (DWF).
- Grade, Loam and seed 21' x 2' disturbed areas.

Latitude 44.215955

Longitude -69.071188

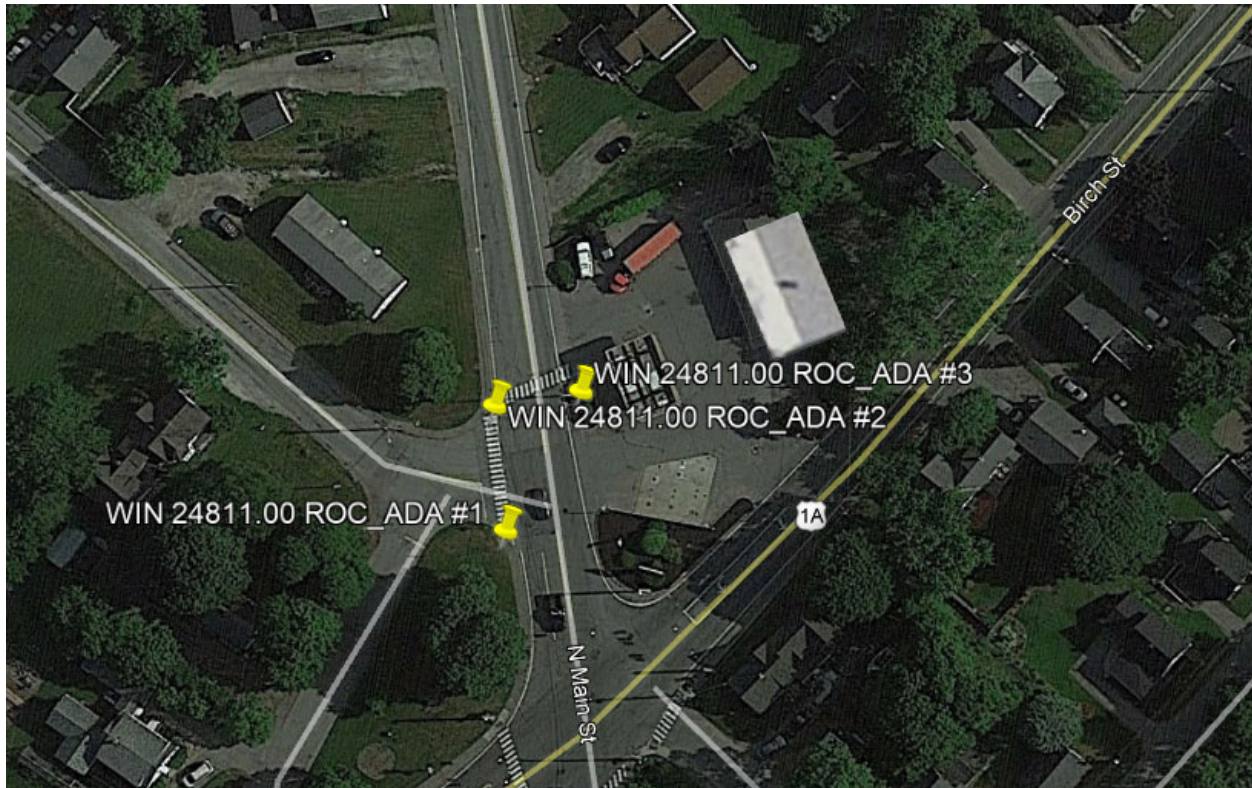
Reference 801(22)



Camden ADA.kmz

# WIN 24811.00 Region 2 Pedestrian Ramp Report

## Rockland



### WIN 24811.00 ROC ADA #1

No Asset # - ROC #1

Reconstruct Pedestrian Ramp on Southwest side of North Main St at Cedar St, Rockland.

- Cut existing sidewalk 14' back from Cedar St. Cut 2' away from and along existing Granite curb South 14.5' from Cedar St. Remove old HMA and pieces of Granite curb.
- Install 8' Granite tip down. Make sure there is a 7' opening for DWF.
- Grade and pave 14' x 5' sidewalk (Item 403.209) and 14.5' x 2' area in roadway (Item 403.210 & 403.213).
- Install 6' x 2' Detectable Warning Field (DWF).
- Grade, loam, and seed 19' x 2' disturbed area.

Reconstruct curb line at North West side of North Main St at Route 1A.

- Cut existing sidewalk 6" beyond end of both short Granite tip downs and remove 9' x 5' HMA sidewalk. In road cut 1' beyond each end of both short tip downs. Staying 2' away from curb cut from end of one tip down to the other and remove old tip downs.
- Install 8' straight granite section.
- Grade and pave 9' x 5' HMA sidewalk and 10' x 2' curb line.
- Grade, loam, and seed 9' x 2' disturbed area.

Latitude 44.116275  
Longitude -69.111364  
Reference N/A

# WIN 24811.00 Region 2 Pedestrian Ramp Report

## WIN 24811.00 ROC ADA #2

No Asset # - ROC #2

Mid-Block Crossing

Reconstruct Pedestrian Ramp at North West side of North Main St at Cedar St, Rockland.

- Cut existing Cedar St sidewalk, curb and 2' into gutter line 8.5' back from N. Main St. Cut existing N. Main St sidewalk, curb and 2' into gutter line 15' North of end of Cedar St tip down. Cut (stay 2' off curb) from Cedar St curb cut to N. Main St curb cut. Remove old HMA.
- Install 18' Bituminous curb (2 – 8' tip downs with 5' DWF opening).
- Grade and pave 23' x 5' sidewalk and 23' x 2' gutter line.
- Install 4' x 2' Detectable Warning Field (DWF).
- Grade, loam, and seed 23' x 2' disturbed area.
- Install crosswalk post and signs.

Latitude 44.116265  
Longitude -69.111364  
Reference 801(20)

## WIN 24811.00 ROC ADA #3

No Asset # - ROC #3

Mid-Block Crossing

Construct New Pedestrian Ramp on East side of North Main St across from Cedar St.

- Pull existing bark mulch away from project area to be reused upon project completion.
- On East side of Island cut existing Concrete curb to have 4' tapers from North face of utility pole South and from 7' North of utility pole North. Remove existing straight section of concrete curb on East side of Island just North of guy wire. Set aside for reuse.
- On West side of Island cut pavement 2' away from Bituminous curb from concrete curb at North end of Island South to Concrete curb by catch basin.
- On North side of utility pole make 2 cuts across Island from North Main St toward store 10.5' long and 7' apart. If needed cut out and pave 7' x 5' section of shoulder at West end of new walk for clear space. Remove all old HMA.
- Install 21' Bituminous curb with a 4' tip down on each end of new walk (4 tip downs).
- Install 23' Bituminous curb on West side of Island with 4' tip down on each side of new walk.
- Construct and pave new 10.5' x 5' (5.8 SY) sidewalk across existing island.
- Install 2 - 4' x 2' Detectable Warning Field (DWF).
- Grade and reapply stockpiled bark mulch.
- Install crosswalk post and signs.

Latitude 44.116258  
Longitude -69.111377  
Reference 801(25)



Rockland ADA.kmz

# WIN 24811.00 Region 2 Pedestrian Ramp Report

## Saint George



### WIN 24811.00 STG ADA #1

No Asset # - STG #1

Reconstruct Pedestrian Ramp at West side of St. George School Entrance on Route 131, St. George.

- Cut and remove 8' x 5' section of concrete sidewalk and curb.
- Install 40' x 5' section of reinforced concrete sidewalk
- Install 40' concrete slipform curb with 8' tip down.
- Install 5' x 6' concrete safe landing area with 6' x 2' Detectable Warning Field (DWF).
- Loam and seed disturbed areas.
- Install 8' (PIPE) pipe on existing inlet pipe.
- Adjust catch basin to grade.

Latitude 43.966281°  
Longitude -69.213543°

# WIN 24811.00 Region 2 Pedestrian Ramp Report

## WIN 24811.00 STG ADA #2

No Asset # - STG #2

Reconstruct Pedestrian Ramp at East side of St. George School Entrance on Route 131, St. George.

- Cut and remove 8' x 5' section of concrete sidewalk and curb.
- Install 8' concrete slipform tip down.
- Install 4' x 2' Detectable Warning Field (DWF).
- Loam and seed disturbed areas.
- Match into existing school sidewalk.

Latitude 43.966227°

Longitude -69.213340°

## WIN 24811.00 STG ADA #3

No Asset # - STG #3

Reconstruct Pedestrian Ramp on Route 131, St. George across from School St.

- Cut and remove 26' x 5' section of concrete sidewalk and curb.
- Install 26' x 5' section of reinforced concrete sidewalk
- Install two (2) - 10' concrete slipform tip downs.
- Install 6' x 2' Detectable Warning Field (DWF).
- Loam and seed disturbed areas.
- Match into existing walkway.

Latitude 43.966067°

Longitude -69.212484°

## WIN 24811.00 STG ADA #4

No Asset # - STG #4

Construct New Pedestrian Ramp at southeast corner of School St. on Route 131, St. George

- Install 10' of concrete slipform curb, including 2' to connect to existing curb and two (2) – 4' tip down areas to create safe landing area.
- Install 16' x 5' section of reinforced concrete sidewalk
- Install 6' x 2' Detectable Warning Field (DWF).
- Loam and seed disturbed areas.

Latitude 43.965963°

Longitude -69.212500°

# WIN 24811.00 Region 2 Pedestrian Ramp Report

## **WIN 24811.00 STG ADA #5**

No Asset # - STG #5

Reconstruct Pedestrian Ramp at southwest corner of Juniper St. on Route 131, St. George

- Cut and remove 8' x 5' section of concrete sidewalk and curb.
- Install 8'-10' of concrete slipform curb tip down.
- Install 8' x 5' section of reinforced concrete sidewalk.
- Install 4' x 2' Detectable Warning Field (DWF).
- Loam and seed disturbed areas.

Latitude 43.966071°

Longitude -69.211369°

## **WIN 24811.00 STG ADA #6**

No Asset # - STG #6

Reconstruct Pedestrian Ramp at northwest corner of Juniper St. on Route 131, St. George

- Cut and remove 15' x 5' section of concrete sidewalk.
- Install 15' x 5' section of reinforced concrete sidewalk.
- Install 4' x 2' Detectable Warning Field (DWF).
- Loam and seed disturbed areas.
- Connect to adjacent ramp (STG #7) crossing Route 131.

Latitude 43.966081°

Longitude -69.211223°

## **WIN 24811.00 STG ADA #7**

No Asset # - STG #9

Reconstruct Pedestrian Ramp across from Post Office on Route 131, St. George

- Cut and remove 22' x 5' section of concrete sidewalk and curb.
- Install 16' of concrete slipform curb, including two (2) – 8' tip down areas.
- Install 22' x 5' section of reinforced concrete sidewalk.
- Install 6' x 2' Detectable Warning Field (DWF).
- Loam and seed disturbed areas.

Latitude 43.967368°

Longitude -69.208402°

## **WIN 24811.00 STG ADA #8**

No Asset # - STG #10

Construct New Pedestrian Ramp at Post Office on Route 131, St. George

- Install 32' of concrete slipform curb, including two (2) – 8' tip down areas to create safe landing area.
- Install 22' x 5' section of reinforced concrete sidewalk
- Install 6' x 2' Detectable Warning Field (DWF).

## WIN 24811.00 Region 2 Pedestrian Ramp Report

- Loam and seed disturbed areas.

Latitude 43.967351°

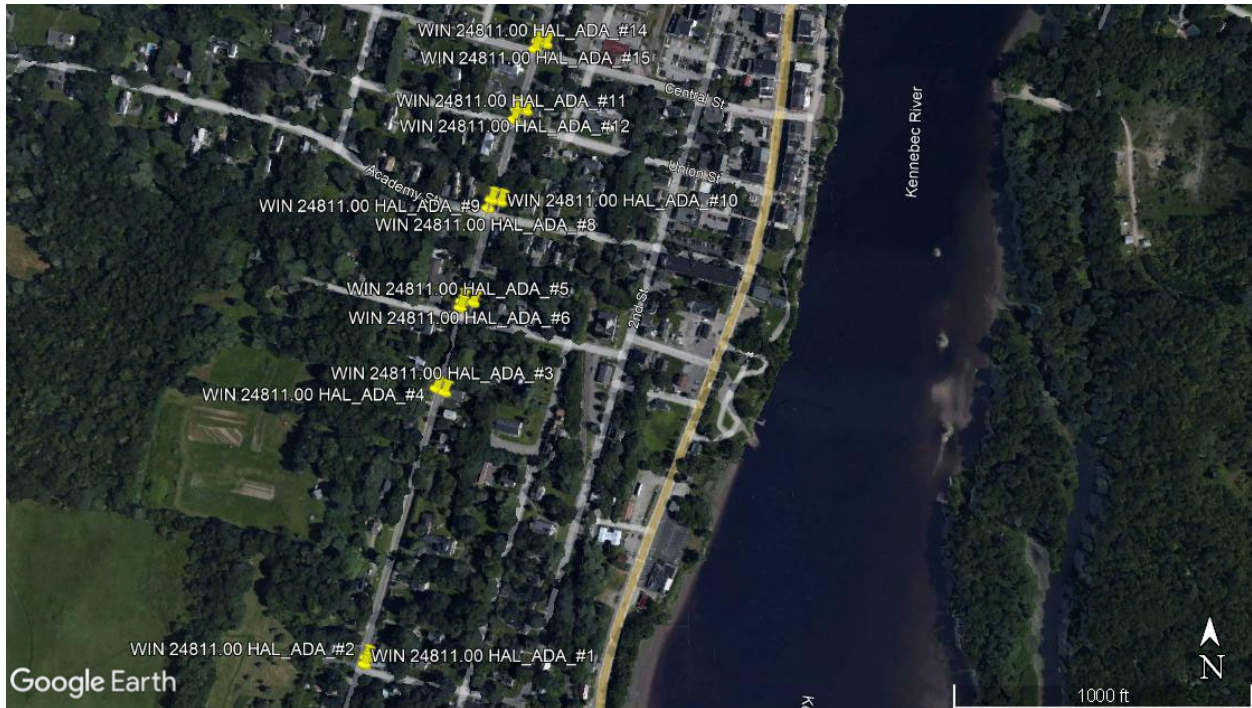
Longitude -69.208211°



St. George\_ada.kmz

# WIN 24811.00 Region 2 Pedestrian Ramp Report

## Hallowell



### WIN 24811.00 HAL\_ADA #1

Asset # CR02786

Reconstruct Pedestrian Ramp at Southeast corner of Middle St and Grove St, Hallowell.

- Avoid CB, Cut along edge of fog line
- Cut existing sidewalk, curb and 2' into Middle St 15' back from Grove St. Cut from sidewalk cut North to Catch Basin. Remove all old HMA.
- Adjust Catch Basin to grade.
- Install 18' of Bituminous Curb.
- Grade sidewalk and pave 15' x 5'.
- Install 4' x 2' Detectable Warning Field (DWF) 5' (to front of plate) South of Grove St.
- Grade, Loam and seed 15' x 2' disturbed area.

Latitude 44.280752

Longitude -69.795518

Reference 801(22)

## WIN 24811.00 Region 2 Pedestrian Ramp Report

### WIN 24811.00 HAL ADA #2

Asset # CR02785

Reconstruct Pedestrian Ramp at Northeast corner of Middle St and Grove St, Hallowell.

- Cut existing sidewalk, curb and 2' into Middle St 15' back from Grove St, remove old HMA.
- Install 13' of Bituminous Curb.
- Grade sidewalk and pave 15' x 5'.
- Install 4' x 2' Detectable Warning Field (DWF).
- Grade, Loam and seed 15.5' x 2' disturbed area.

Latitude 44.280776

Latitude -69.795545

Reference 801(22)

### WIN 24811.00 HAL ADA #3

No Asset # - HAL #4

Mid-Block Crossing

Reconstruct Pedestrian Ramp on North East side of Middle St at #54, Hallowell.

- Realign crosswalk from the South side of # 54 driveway to new landing on west side of Middle St. and have a 5' x 3' grassed Island placed between the south edge of the driveway and the new sidewalk landing area.
- Cut existing sidewalk/driveway at edge of driveway and 2' into Middle St. Cut sidewalk, curb and 2' into Middle St 23' South of edge of driveway. Cut Middle St between both ends. Remove old HMA.
- Excavate a 5' x 3' grass Island area at least 4" deep from edge of driveway South 3'.
- Install 15' Bituminous Curb.
- Grade and pave 20' x 5' sidewalk.
- Install 4' x 2' Detectable Warning Field (DWF).
- Grade, Loam and seed the 5' x 3' Island and 20' x 2' disturbed area.
- Relocate existing crosswalk post/signs to new landing location.

Latitude 44.283348

Longitude -69.794597

## WIN 24811.00 Region 2 Pedestrian Ramp Report

### WIN 24811.00 HAL ADA #4

No Asset # - HAL #5

Mid-Block Crossing

Reconstruct Pedestrian Ramp on North West side of Middle St across from #54, Hallowell.

This crosswalk needs to be realigned to new landing on East side of Middle St.

- Cut sidewalk 17' back (measure up center of current sidewalk) from Middle St. Remove old HMA.
- Grade sidewalk to be 5' wide from current 4' walk (allow 1' taper) to edge of Middle St.
- Pave sidewalk 17' x 5'.
- Install 4' x 2' Detectable Warning Field (DWF).
- No curb needed.
- Remove excess material from grass area between sidewalk and Middle St.
- Grade, loam and seed 13' x 2' and 21' x 2' disturbed areas.
- Install 4' x 2' Detectable Warning Field (DWF).  
Relocate existing crosswalk post/signs if necessary.

Latitude 44.283348

Longitude -69.794597

Reference 801(22)

### WIN 24811.00 HAL ADA #5

Asset # CR02784

Reconstruct Pedestrian Ramp at Southwest corner of Middle St and Chestnut St, Hallowell.

- Cut existing sidewalk 10' back from Chestnut St (behind telephone pole). Cut curb and 2' into Middle St 8' back from Central St ( front of utility pole) then cut along curb to Chestnut St. Remove old HMA.
- Install 8' Bituminous Curb from telephone pole to edge of Chestnut St.
- Grade and pave 10' x 5' sidewalk.
- Install 4' x 2' Detectable Warning Field (DWF).
- Grade, Loam and seed 11' x 2' disturbed area.

Latitude 44.283993

Longitude -69.794355

Reference 801(22)

## WIN 24811.00 Region 2 Pedestrian Ramp Report

### WIN 24811.00 HAL ADA #6

Asset # CR02782

Reconstruct Pedestrian Ramp at Northeast corner of Middle St and Chestnut St, Hallowell.

- Cut existing sidewalk, curb and 2' into Chestnut St 26' back from Middle St. Remove old HMA.
- Install 19' of Bituminous Curb with an 8' tip down.
- Grade and pave 26' x 5' sidewalk.
- Install 4' x 2' Detectable Warning Field (DWF).
- Grade, Loam and seed 25' x 2' disturbed area.
- Install crosswalk post and signs.

Latitude 44.284052  
Longitude -69.794184  
Reference 801(22)

### WIN 24811.00 HAL ADA #7

Asset # CR02783

Reconstruct Pedestrian Ramp at Northwest corner of Middle St and Chestnut St, Hallowell.

- Cut existing sidewalk, curb and 2' into Middle St 22' back from Chestnut St. Cut 2' along curb to 2' beyond Chestnut St.
- Cut existing sidewalk, curb and 2' into Chestnut St 6' back from Middle St. Cut 2' along curb to Middle St cut. Remove old HMA.
- Install 15' of Bituminous Curb on Middle St and 6' on Chestnut St.
- Grade and pave 22' x 5' on Middle St and 6' x 5' on Chestnut St.
- Install 10' x 2' (diagonal) Detectable Warning Field (DWF).
- Grade, Loam and seed 17' x 2' on Middle St and 5' x 2' on Chestnut St disturbed areas.
- Install crosswalk post and signs.

Latitude 44.284124  
Longitude -69.794374  
Reference 801(20)

### WIN 24811.00 HAL ADA #8

Asset # CR02778

Reconstruct Pedestrian Ramp at Southwest corner of Middle St and Academy St, Hallowell.

- Cut existing sidewalk 14' back from Academy St. Remove existing curb from end of sidewalk at Academy St 15' South to "solid curb". Remove old HMA.
- Grade sidewalk to 5' by widening toward Middle St and pave 14' x 5'.
- Install 15' of Bituminous Curb from end of sidewalk south to solid curb.
- Install 4' x 2' Detectable Warning Field (DWF).
- Grade, Loam and seed in area between sidewalk and curb and 14' x 2' disturbed area.

Latitude 44.284932  
Longitude -69.794019  
Reference 801(22)

## WIN 24811.00 Region 2 Pedestrian Ramp Report

### WIN 24811.00 HAL ADA #9

No Asset # - HAL # 10

Reconstruct Pedestrian Ramp at Northeast corner of Middle St and Academy St, Hallowell.

- Cut existing sidewalk, curb and 2' into Academy St 26.5' back from edge of Middle St. From the curb cut in sidewalk cut line West to Middle St, remove old HMA.
- Install 15' Bituminous curb.
- Grade and pave 26.5' x 5' sidewalk.
- Install 4' x 2' Detectable Warning Field (DWF) at Academy St radius apron.
- Grade, Loam and seed 26.5' x 2' disturbed area.
- Install crosswalk post and signs
- \*May need back run of curb here, depending what happens with the house that's currently being worked on.

Latitude 44.285013  
Longitude -69.793829  
Reference 801(22)

### WIN 24811.00 HAL ADA #10

No Asset # - HAL # 11

Reconstruct Pedestrian Ramp at Northwest corner of Middle St and Academy St, Hallowell.

- Cut Middle St sidewalk 12' back from end of actual sidewalk. Cut Middle St curb and 2' into Middle St 10' back from landing area. Cut along Middle St curb South to landing area. Then cut 9' (on Middle St) x 8' (on Academy St) for landing area. Cut Academy St sidewalk, curb and 2' into Academy St 15.5' back from end of actual sidewalk. Cut along Academy St from sidewalk cut East to match up with south end of Middle St landing cut. Remove old HMA.
- Install 10' Bituminous curb on Middle St. Install 15' of Bituminous curb on Academy St.
- Grade sidewalks and landing area.
- Pave Middle St sidewalk 12' x 4.5', Academy St 15.5' x 4', Middle St curb section 10' x 3' and landing area 9' x 8'.
- Install 8' x 2' (diagonal) Detectable Warning Field (DWF).
- Grade, Loam and seed 12' x 3' between sidewalk and Middle St, 12' x 2' behind Middle St sidewalk and 14.5' x 2' on Academy St disturbed areas.
- Install crosswalk post and signs.
- Alter Catch Basin

Latitude 44.285041  
Longitude -69.793968

## WIN 24811.00 Region 2 Pedestrian Ramp Report

### WIN 24811.00 HAL ADA #11

Asset # CR02792

Reconstruct Pedestrian Ramp at Southwest corner of Middle St and Union St, Hallowell.

- Cut sidewalk 15' back from Union St. (No curb). Remove old HMA.
- Grade and pave 15' x 5'.
- Install 4' x 2' Detectable Warning Field (DWF).
- Grade, Loam and seed 15' x 6' (4' between sidewalk and Middle St, 2' on Property owner's side) of disturbed areas.

Latitude 44.285776

Longitude -69.793652

Reference 801(22)

### WIN 24811.00 HAL ADA #12

Asset # CR02790

Reconstruct Pedestrian Ramp at Northeast corner of Middle St and Union St, Hallowell.

- Cut sidewalk 17' back from Middle St. From end of 3' grass area cut West along Union St 3' from and parallel to sidewalk to Middle St. Remove old HMA.
- Dig out 4" deep from end of current grass area westerly 6'L x 3'W (tapering west end to point that will be even with the front of the Detectable Warning Field). Grade and pave sidewalk 17' x 5' and small area from end of grass area to Middle St. No curb.
- Install 4' x 2' Detectable Warning Field (Front edge of D.W.F. should be 1' back from Middle St).
- Grade, Loam and seed 16' x 3' on South side of sidewalk and 17' x 2' on North side of sidewalk disturbed areas.
- Install post and signs.

Latitude 44.285866

Longitude -69.793512

Reference 801(22)

### WIN 24811.00 HAL ADA #13

Asset # CR02791

Reconstruct Pedestrian Ramp at Northwest corner of Middle St and Union St, Hallowell.

- Cut Middle St sidewalk 16' back from end of actual sidewalk by utility pole. Cut Union St sidewalk 9' back from western edge of Middle St sidewalk (if necessary, cut along sidewalk/swale joint).
- Landing: Cut along Middle St from end of existing curb 7' South. Cut along Union St from South end of Middle St cut 9.5' West. Remove old HMA. No curb.
- Grade and pave 16' x 5' on Middle St, 9' x 5' on Union St and 9.5' x 7' landing area.
- Install "L" Detectable Warning Field with 6' on Union St and 4' on Middle St.
- Grade, Loam and seed 16.5' x 6' (4' between sidewalk and Middle St, 2' on Property owner's side) and 7' x 2' on Union St.
- Install post and signs.

## WIN 24811.00 Region 2 Pedestrian Ramp Report

- Catch Basin Alter (Need cascade frame)

Latitude 44.285893

Longitude -69.793652

### **WIN 24811.00 HAL ADA #14**

Asset # CR02781

Reconstruct Pedestrian Ramp at Southwest corner of Middle St and Central St, Hallowell.

- Cut sidewalk 15' back from Union St. For "adjust catch basin area": Line up with existing Central St curb, then from East side of the end of the sidewalk cut along Central St 5' East. Cut along Middle St parallel to sidewalk 15' South (to edge of round catch basin) then cut to back of round catch basin.
- Remove old HMA, the grass area between the 2 catch basins back to old sidewalk and any broken curb on Central St.
- Adjust Catch Basin to Grade.
- Grade and pave 15' x 5' sidewalk (Item 403.209) and area between 2 catch basins 15' x 5' (Item 403.213).
- Install 15' of Bituminous curb on Central St and 8' on Middle St (from utility pole to West side of catch basin).
- Install 4' x 2' Detectable Warning Field.
- Grade, Loam and seed 15.5' x 2' on Middle St and 12' x 2' on Central St.
- 2 – catch basin Alters

Latitude 44.286447

Longitude -69.793385

### **WIN 24811.00 HAL ADA #15**

Asset # CR02779

Reconstruct Pedestrian Ramp at Northeast corner of Middle St and Central St, Hallowell.

- Cut sidewalk, curb and 2' into Central St 12' back from Middle St. Cut along Central St from curb cut West to Middle St allowing enough room to widen sidewalk to 5' at Middle St. Cut curb and 2' into Middle St 12' North from North front corner of the Detectable Warning Field. Cut along Middle St curb South to meet Central St cut. Remove old HMA.
- Grade and pave 12' x 5' sidewalk.
- Install 12' of Bituminous curb on Middle St and 7' on Central St.
- Install 4' x 2' (angled –front of South corner 5' back and front of North corner 4' back from Middle St) Detectable Warning Field (DWF).
- Grade, Loam and seed 19' x 2' disturbed area.
- Install post and signs.

Latitude 44.286501

Longitude -69.793195

Reference 801(22)

# WIN 24811.00 Region 2 Pedestrian Ramp Report

## WIN 24811.00 HAL ADA #16

Asset # CR02780

Reconstruct Pedestrian Ramp at Northwest corner of Middle St and Central St, Hallowell.

- Cut Middle St sidewalk 22' back from South end of actual sidewalk. Cut Central St sidewalk, curb and 2' into Central St 17.5' back from end of current curb. From curb cut, cut along Central St to catch basin. Cut in line with outside edge of existing curb 10.6' East measured from center of catch basin. Cut along Middle St 23' (+/-) North from end of Central St cut making sure to be 2' away from current Granite curb. Remove all old HMA.
- Remove first 3 sections of Granite curb on Middle St (from Union St). Reset 1- 6' section of straight curb. Install 1 new 6' section of straight Granite curb and 1 straight 10' Granite tip down.
- Install 17.5' Bituminous curb on Central St.
- Grade both sidewalks, the widening for the fire hydrant and the landing area. Using Item 403.209: pave Middle St sidewalk 22' x 4.5', Central St sidewalk 17.5' x 5' and the 8.5' x 7' landing area.
- Grade 23' x 2' "gutter" along Middle St from Central St North to end of adjusted Granite curb. Using Item 403.213 pave the "gutter" 23' x 2'.
- Install 10' x 2' (diagonal) Detectable Warning Field.
- Grade, Loam and seed 23' x 2' on Middle St and 16' x 2' on Central St.
- Install post and signs.
- Alter Catch Basin

Latitude 44.286547

Longitude -69.79336



Hallowell ADA.kmz

# WIN 24811.00 Region 2 Pedestrian Ramp Report

## Waldoboro



### WIN 24811.00 WAL ADA #1

Asset # CR11551

Reconstruct Pedestrian Ramp at Southeast corner of Pleasant St. and Route 220, Waldoboro

- Cut and remove 22' x 8' of bituminous sidewalk and curb.
- Grade and pave 22' x 8' sidewalk, tapering and matching into width of sidewalk going up Pleasant St.
- Install 15' of granite tip down on Pleasant St. and 4' of granite tip down on Route 220.
- Install 6' x 2' (Detectable Warning Field (DWF) diagonally in opening between granite tip down areas.
- Grade, Loam and seed 18' x 3' disturbed area.
- Alter catch basin to grade.

Latitude 44.094804°

Longitude -69.375049°

# WIN 24811.00 Region 2 Pedestrian Ramp Report

## WIN 24811.00 WAL ADA #2

Asset # CR11552

Reconstruct Pedestrian Ramp at Northeast corner of Pleasant St. and Route 220, Waldoboro

- Cut and remove 18' x 8' of bituminous sidewalk and curb.
- Grade and pave 18' x 8' sidewalk, matching into existing grade on back side of sidewalk
- Install 16' of granite curb, including 8' of tip down area, on Route 220 and 4' of granite tip down on Pleasant St.
- Install 6' x 2' (Detectable Warning Field (DWF) diagonally in opening between granite tip down areas.
- Alter catch basin to grade.

Latitude 44.094900°

Longitude -69.375119°

## WIN 24811.00 WAL ADA #3

Asset # CR12022

Reconstruct Pedestrian Ramp at Southwest corner of Main St. and Route 220, Waldoboro

- Cut and remove 28' x 10' of bituminous sidewalk and curb.
- Grade and pave 28' x 10' sidewalk, matching into existing grade on back side of sidewalk next to building.
- Install 19' of granite curb, including two 6' tip downs near Route 220 crossing and one 7' tip down near Main St. crossing
- Install two 6' x 2' Detectable Warning Fields (DWF), one for the Main St. crossing and one for the Route 220 crossing
- Carefully work around utility pole.

Latitude 44.095233°

Longitude -69.375616°

## WIN 24811.00 WAL ADA #4

Asset # CR12026

Reconstruct Pedestrian Ramp at Southeast corner of Main St. and Route 220, Waldoboro

- Cut and remove 25' x 6' of bituminous sidewalk and curb.
- Grade and pave 25' x 6' sidewalk, matching into existing grade on back side of sidewalk near building.
- Install 28' of granite curb, including two 6' tip downs near Route 220 crossing and two 8' tip downs near Main St. crossing
- Install two 6' x 2' Detectable Warning Fields (DWF), one for the Main St. crossing and one for the Route 220 crossing.
- Adjust catch basin to grade.
- Mulch disturbed areas going uphill.

Latitude 44.095292°

Longitude -69.375463°

## WIN 24811.00 Region 2 Pedestrian Ramp Report

### WIN 24811.00 WAL ADA #5

Asset # CR12024

Reconstruct Pedestrian Ramp at Northwest corner of Main St. and Route 220, Waldoboro

- Cut and remove 32' x 6' of bituminous sidewalk and curb.
- Grade and pave 32' x 6' sidewalk.
- Install 26' of granite curb, including two 8' tip downs adjacent to ramp opening.
- Install 23' of bituminous curb on back side of sidewalk.
- Install two 6' x 2' Detectable Warning Fields (DWF), one for the Main St. crossing and one for the Route 220 crossing.

Latitude 44.095363°

Longitude -69.375749°

### WIN 24811.00 WAL ADA #6

Asset # CR12023

Reconstruct Pedestrian Ramp at Northeast corner of Main St. and Route 220, Waldoboro

- Cut and remove 34' x 6' of bituminous sidewalk and curb.
- Grade and pave 34' x 6' sidewalk.
- Install 23' of granite curb, including one 8' tip down up Jefferson St. and one 15' tip down up Main St.
- Install 8' x 2' Detectable Warning Fields (DWF), four plates in L shape with long side parallel to Jefferson St.
- Adjust catch basin to grade.

Latitude 44.095410°

Longitude -69.375608°

### WIN 24811.00 WAL ADA #7

Asset # CR02780

Reconstruct and relocate Pedestrian Ramp across from Post Office on Main St., Waldoboro

- Grade and pave 12' x 5' sidewalk in existing grass esplanade.
- Install 4' x 2' Detectable Warning Fields.
- Loam and seed disturbed areas.

Latitude 44.096521°

Longitude -69.373760°

# WIN 24811.00 Region 2 Pedestrian Ramp Report

## WIN 24811.00 WAL ADA #8

Asset # CR02780

Reconstruct Pedestrian Ramp at Post Office on Main St., Waldoboro

- Cut and remove 16' x 5' of bituminous sidewalk and curb.
- Grade and pave 16' x 5' sidewalk.
- Install 8' granite tip down.
- Install 6' x 2' Detectable Warning Fields (DWF).
- Loam and seed disturbed areas.

Latitude 44.096426°

Longitude -69.373627°



Waldoboro  
ADA.kmz