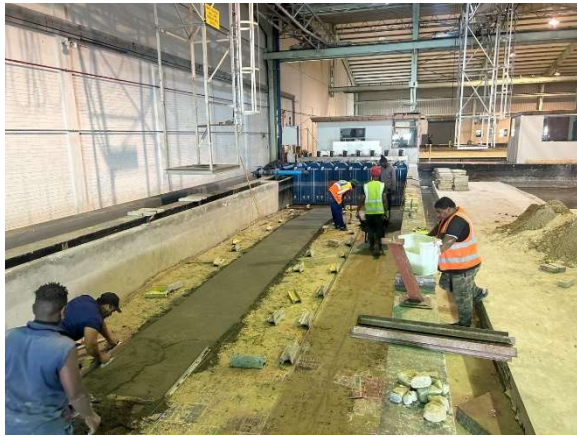


Appendix E - Model implementation



Construction of the model floor using a cement-sand mix which is placed over compacted sand and left to harden. This includes detail of the sea floor leading up to the test structure.



Placement of model core material. All model rock is shaped to the detail included on the templates. PVC pipes were fixed to the model floor to represent piles for the combi wall breakwater



Placement and shaping of model underlayer rock. The upper surface of the underlayer were spray painted green for easy identification if exposed.



Placement and shaping of model armour rock. The wooden capping was also completed and fitted to the rubble mound breakwater and vertical piles.



Finishing off the armour rock with different colours of spray paint. Zones were selected based on different areas of the structure.

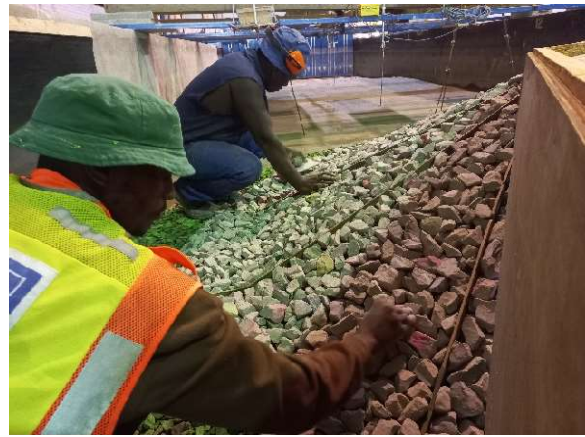


The completed test structure for Test Series A. Different colours were used for the trunk and roundhead areas.

Appendix E - Model implementation



Dismantling the test structure after completion of Test Series A, and reconstructing different rock for the underlayer and armour layer.



The same methods were used for underlayer and armour layer placement as described above. This includes a final check before the templates are removed.



The completed test structure for Test Series B. the same zones were sprayed with different colours to distinguish between the two different test structures.



Happy client after testing was finalized.