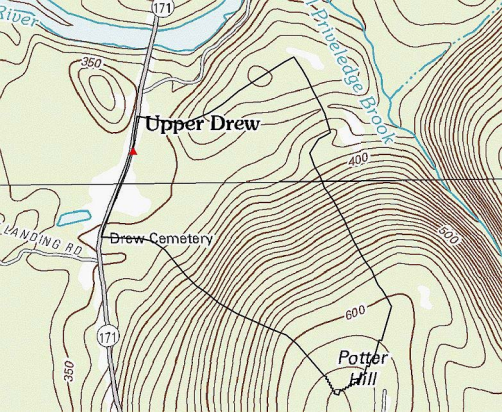


Designer csh

Date 6/21/2022

!!! DO NOT ENTER ANYTHING ON THIS PAGE !!!

Rational - use only for A <= 200 ac <small>(see instructions for 200 < A < 320 ac)</small>												Regression - use only for A >= 320 ac & IA <= 10% <small>(see instructions for 200 < A < 320 ac)</small>											
T = 10			T = 25			T = 50			T = 100			T = 10			T = 25			T = 50			T = 100		
Q	D _{1.5}	D ₁	Q	D _{1.5}	D ₁	Q	D _{1.5}	D ₁	Q	D _{1.5}	D ₁	Q	D _{1.5}	D ₁	Q	D _{1.5}	D ₁	Q	D _{1.5}	D ₁	Q	D _{1.5}	D ₁
21.76	26	32	27.02	29	34	30.92	30	36	35.15	32	38	38.64	33	40	51.63	37	44	62.27	40	48	73.32	43	51



River

171

350

Upper Drew

Priveledge Brook

400

LANDING RD

Drew Cemetery

500

171

600

350

Potter Hill



Drew Plantation
280479
(ARPA NOT INCLUDED)



45.626636, -68.071004



USGS, USDA, The National Map: Orthoimagery. March 12, 2025.

Powered by Esri

PIN



Approximate location based on user input and does not represent an authoritative property location



Selected FloodMap Boundary



Digital Data Available



No Digital Data Available



Unmapped

MAP PANELS

SPECIAL FLOOD HAZARD AREAS



Without Base Flood Elevation (BFE)
Zone A, V, A99



With BFE or Depth



Regulatory Floodway Zone AE, AO, AH, VE, AR



0.2% Annual Chance Flood Hazard, Areas of 1% annual chance flood with average depth less than one foot or with drainage areas of less than one square mile Zone X



Future Conditions 1% Annual Chance Flood Hazard Zone X



20.2 Cross Sections with 1% Annual Chance Water Surface Elevation



17.5 Coastal Transect



Base Flood Elevation Line (BFE)



Limit of Study



Jurisdiction Boundary



Coastal Transect Baseline



Profile Baseline

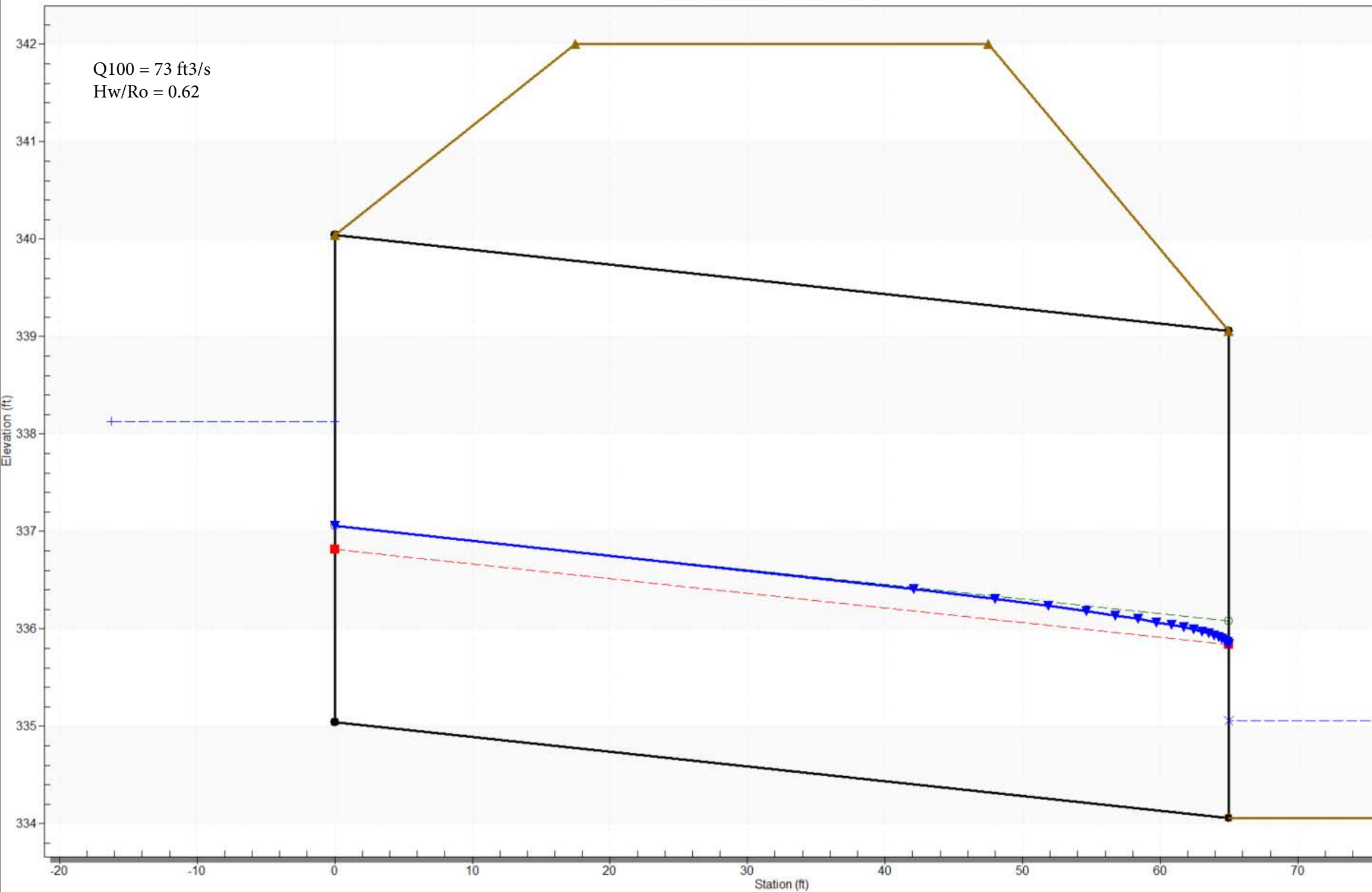


Hydrographic Feature

OTHER FEATURES

Crossing - 7D-V-chnl - des Q, Design Discharge - 73.0 cfs
Culvert - Culvert 1, Culvert Discharge - 73.0 cfs

Q100 = 73 ft³/s
Hw/Ro = 0.62



Crossing: 7D-V-chnl - des Q

Front View (Not to scale)

Roadway

Design Headwater

Culvert 1: Y-Top

Culvert 1: Y-Bottom

Q100 = 73 ft³/s
Hw/Ro = 0.62

