

STATE OF MAINE DEPARTMENT OF TRANSPORTATION



JEFFERSON LINCOLN COUNTY HOTEL BRIDGE OVER DAVIS STREAM

STATE ROUTE 32/WALDOBORO ROAD
FEDERAL AID PROJECT NO. 02839800
BRIDGE NO. 2378

LIST OF DRAWINGS

Title Sheet	1
Estimated Quantities and General Construction Notes	2
General Plan	3
Section Views	4
Staged Construction	5
Sidewalk Modification	6
Guardrail Layout	7

UTILITIES

Central Maine Power
Consolidated Communications
Lincolnville Telephone Company
Charter Communications

TRAFFIC DATA

Current (2025) AADT	3590
Future (2045) AADT	3950
DHV - % of AADT	11
Design Hour Volume	435
Heavy Trucks (% of AADT)	6
Heavy Trucks (% of DHV)	4
Directional Distribution (% of DHV)	51
18 kip Equivalent P 2.0	53
18 kip Equivalent P 2.5	50
Design Speed (mph)	30

MAINTENANCE OF TRAFFIC

Maintain one 11'-0" wide lane of alternating one - way traffic using traffic signals.

<u>PROJECT LOCATION</u>	Jefferson Hotel Bridge (#2378) over Davis Stream Waldoboro Road (Route 32) located 90 FT East of Route 126 Lat./Long. 44° 12' 3.10"N 69° 27' 31.67" W
<u>OUTLINE OF WORK</u>	Wearing Surface Replacement

STATE OF MAINE DEPARTMENT OF TRANSPORTATION	APPROVED	DATE
COMMISSIONER: <i>[Signature]</i>	5-1-26	4-30-2026
CHIEF ENGINEER: <i>[Signature]</i>		

SIGNATURE: <i>[Signature]</i> P.E. NUMBER: 14372 DATE: 13 APRIL 2026

PROJECT INFORMATION	
PROGRAM	BRIDGE
PROJECT MANAGER	CHARLIE GUY
DESIGNER	W. HODIOUS
CONSULTANT	
PROJECT RESIDENT	
CONTRACTOR	
PROJECT COMPLETION DATE	

WIN 02839800

HOTEL BRIDGE NO. 2378
DAVIS STREAM
JEFFERSON

TITLE SHEET

SHEET NUMBER

1

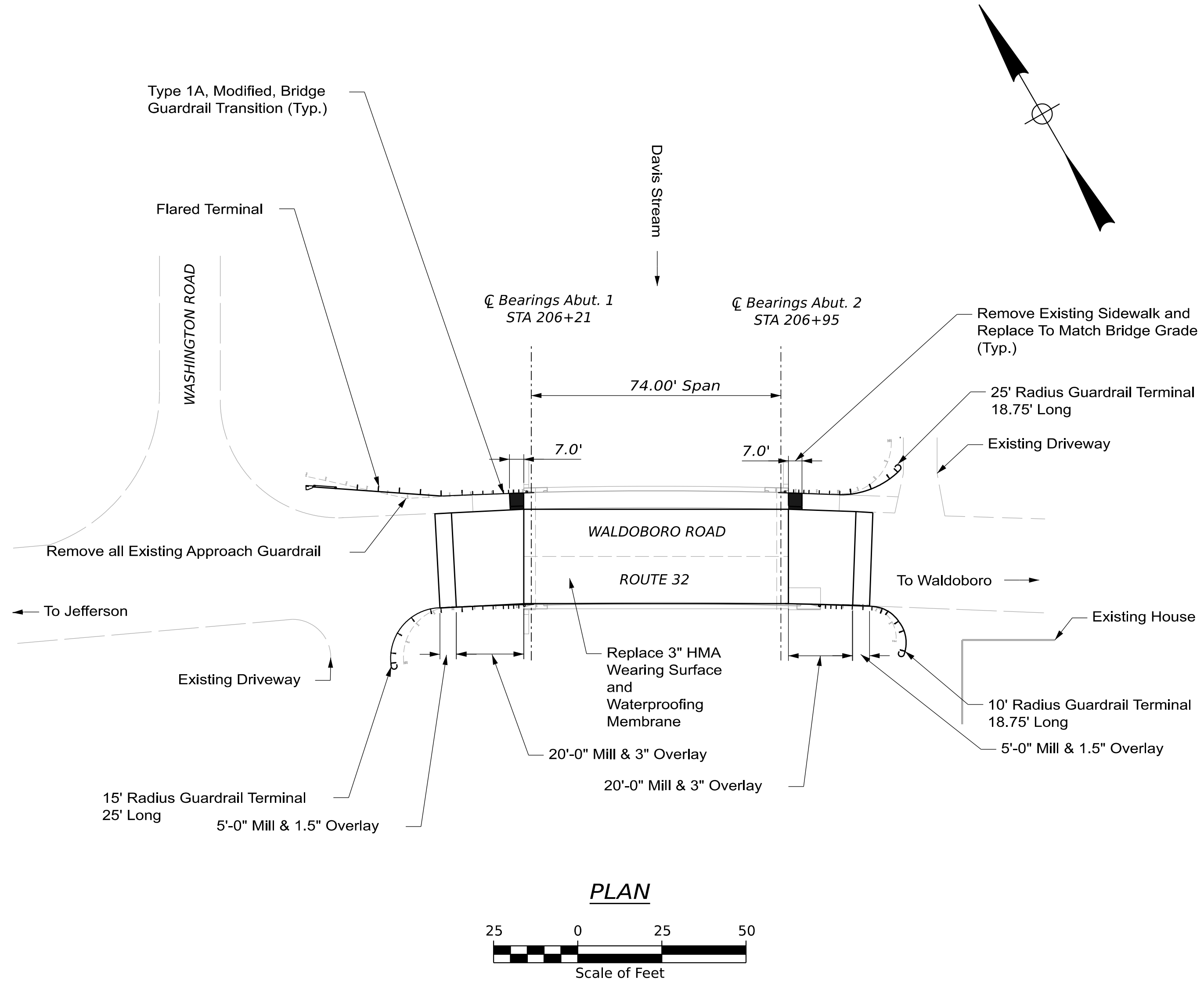
OF 7

ESTIMATED QUANTITIES			
ITEM NO.	DESCRIPTION	QUANTITY	UNIT
202.127	Removal of Existing Bituminous Pavement (240 SY)	1	LS
202.202	Removing Pavement Surface	156	SY
203.20	Common Excavation	10	CY
304.10	Aggregate Subbase Course - Gravel	10	CY
403.208	Hot Mix Asphalt, 12.5 mm HMA Surface	33	T
403.209	Hot Mix Asphalt, 9.5 mm, Incidentals (Sidewalk)	5	T
403.213	Hot Mix Asphalt, 12.5 mm HMA Base	30	T
409.15	Bituminous Tack Coat- Applied	23	G
508.14	High Performance Waterproofing Membrane (246 SY)	1	LS
515.21	Protective Coating, (sidewalk, transition barrier, bridge fascia) (140 SY)	1	LS
518.50	Repair of Upward Facing Surfaces - To Reinforcing Steel < 8 Inches	110	SF
518.51	Repair of Upward Facing Surfaces-Below Reinforcing Steel	650	SF
526.301	Portable Concrete Barrier Type I (120 LF)	1	LS
527.34	Work Zone Crash Cushions	2	UN
606.1301	31" W-Beam Guardrail - Mid-Way Splice - Single Faced	19	LF
606.1303	31" W-Beam Guardrail - Mid-Way Splice, 15' Radius and Less	44	LF
607.1304	31" W-Beam Guardrail - Mid-Way Splice, greater than 15' Radius	19	LF
606.1305	31" W-Beam Guardrail - Mid-Way Splice Flared Terminal	1	EA
606.1307	Bridge Transition (Asymmetrical) - Type IA (MODIFIED)	4	EA
606.265	Terminal End-Single Rail - Galvanized Steel	3	EA
606.353	Reflectorized Flexible Guardrail Marker [2 per guardrail end]	8	EA
609.19	Vertical Curb Type 2	14	LF
610.08	Plain Riprap	10	CY
613.319	Erosion Control Blanket	10	SY
615.07	Loam	1	CY
618.14	Seeding Method Number 2	1	UN
619.12	Mulch	1	UN
619.14	Erosion Control Mix	1	CY
620.58	Erosion Control Geotextile	14	SY
627.18	12 Inch Solid White Pavement Marking Line	56	LF
627.733	4" White or Yellow Painted Pavement Marking Line	450	LF
627.77	Removing Pavement Marking	70	SF
627.78	Temporary 4 Inch Painted Pavement Marking Line, White or Yellow	600	LF
629.05	Hand Labor, Straight Time	20	HR
631.12	All Purpose Excavator (Including Operator)	10	HR
631.172	Truck-Large (Including Operator)	10	HR
639.20	Field Office, Type C	1	EA
643.66	Residential Driveway Temporary Signal	2	EA
643.72	Temporary Traffic Signal	1	LS
652.312	Type III Barricade	4	EA
652.33	Drum	15	EA
652.34	Cone	15	EA
652.35	Construction Signs	300	SF
652.361	Maintenance of Traffic Control Devices	1	LS
652.38	Flaggers	480	HR
652.41	Portable Changeable Message Sign	3	EA
656.75	Temporary Soil Erosion and Water Pollution Control	1	LS
659.10	Mobilization	1	LS

GENERAL CONSTRUCTION NOTES

- The clearing limits as shown on the plans are approximate. The exact limits will be established in the field by the Resident. Payment for clearing will be considered incidental to Contract items.
- Existing signs within the Project limits shall be removed and reset as directed by the Resident. Payment for removal and reinstallation of existing signs will be considered incidental to the Contract. No separate payment will be made.
- Place loam 2 inches deep on all new or reconstructed sideslopes or as directed by the Resident.
- Erosion Control Mix may be substituted in those areas normally receiving loam and seed as directed by the Resident. Placement shall be in accordance with Standard Specifications Section 619, Mulch. Payment will be made under Pay Item 619.14, Erosion Control Mix.
- A MASH compliant guardrail end treatment shall be installed concurrently with the placement of each section of beam guardrail.
- Where it is apparent that runoff will cause continual erosion, Erosion Control Blanket, seeded gutters, riprap downspouts, and other gutters lined with riprap shall be constructed after paving and shoulder work is completed. Payment will be made under the appropriate Contract items.
- Protective Coating for Concrete Surfaces shall be applied to the following areas:
 All exposed surfaces of concrete curbs and sidewalks,
 Fascias down to the drip notch,
 All exposed surfaces of Concrete Transition Barriers,
- Project information referred to below may be accessed at the following MaineDOT web address: <http://www.maine.gov/mdot/contractors/>
- The existing bridge plans may be accessed at the MaineDOT web address. The plans are reproductions of the original drawings as prepared for the construction of the bridge. It is very unlikely that the plans will show any construction field changes or any alterations which may have been made to the bridge during its life span.
- Quantities included for pay items measured and paid for by Lump Sum are estimated quantities and are provided by MaineDOT for informational purposes only. Lump Sum pay items will be paid for at the Contract Bid amount, with no addition or reduction in payment to the Contractor if the actual final quantities are different from the MaineDOT provided estimated quantities, except as follows:
 - If a Lump Sum pay item is eliminated, the requirements of Standard Specifications Section 109.2, Elimination of Items, will take precedence.
 - If other Contract Documents specifically allow a change in payment for a Lump Sum pay item, those requirements will be followed.
 - If a design change results in changes to estimated quantities for Lump sum pay items, price adjustments will be made in accordance with Standard Specifications Section 109.7, Equitable Adjustments to Compensation and Time.

STATE OF MAINE DEPARTMENT OF TRANSPORTATION Federal Project No. 02839800 WIN 28398.00	HOTEL BRIDGE NO. 2378 DAVIS STREAM JEFFERSON	ESTIMATED QUANTITIES & GENERAL CONSTRUCTION NOTES	SHEET NUMBER <div style="font-size: 2em; text-align: center;">2</div> OF 7
DATE 04/14/2026	BY W. Hodous J. Hebrack	SIGNATURE P.E. NUMBER DATE	REVISIONS REVISIONS 1 REVISIONS 2 REVISIONS 3 REVISIONS 4 FIELD CHANGES



PLAN
Scale of Feet
25 0 25 50

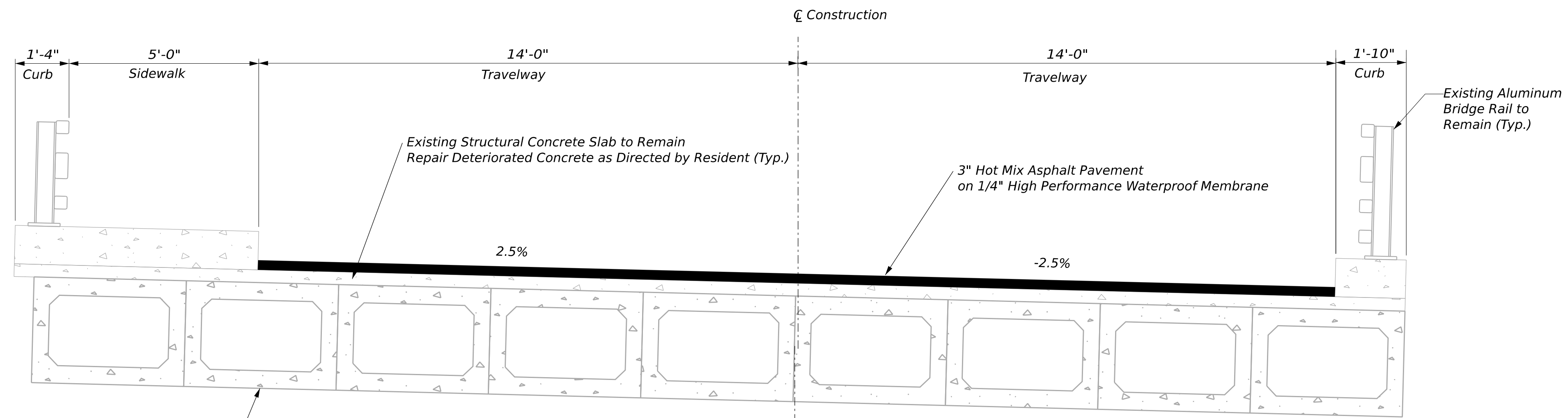
STATE OF MAINE
DEPARTMENT OF TRANSPORTATION
Federal Project No. 02839800
WIN 28398.00

SIGNATURE
P.E. NUMBER
DATE

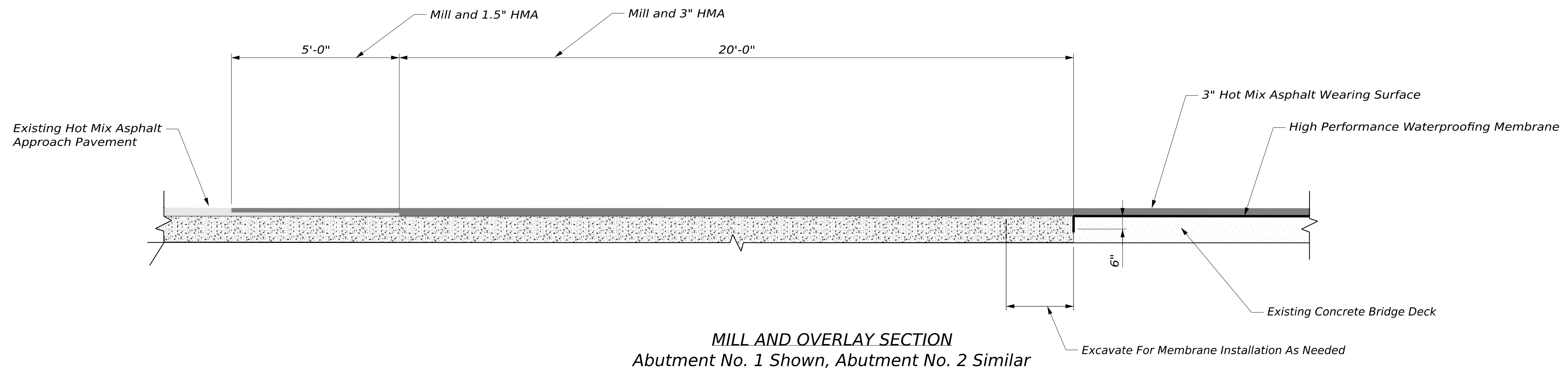
PROJ. MANAGER	CHARLE GUY	BY	DATE
DESIGN-DETAILED	J. JAMES	J. JAMES	02/07/2025
CHECKED-REVIEWED	J. HASBROCK	J. HASBROCK	04/14/2026
DESIGN-DETAILED	W. HODOUS	W. HODOUS	04/14/2026
DESIGN-DETAILED	W. HODOUS	W. HODOUS	04/14/2026
REVISIONS 1			
REVISIONS 2			
REVISIONS 3			
REVISIONS 4			
FIELD CHANGES			

HOTEL BRIDGE NO. 2378
DAVIS STREAM
JEFFERSON
GENERAL PLAN

SHEET NUMBER
3
OF 7



TYPICAL BRIDGE CROSS SECTION



MILL AND OVERLAY SECTION
Abutment No. 1 Shown, Abutment No. 2 Similar

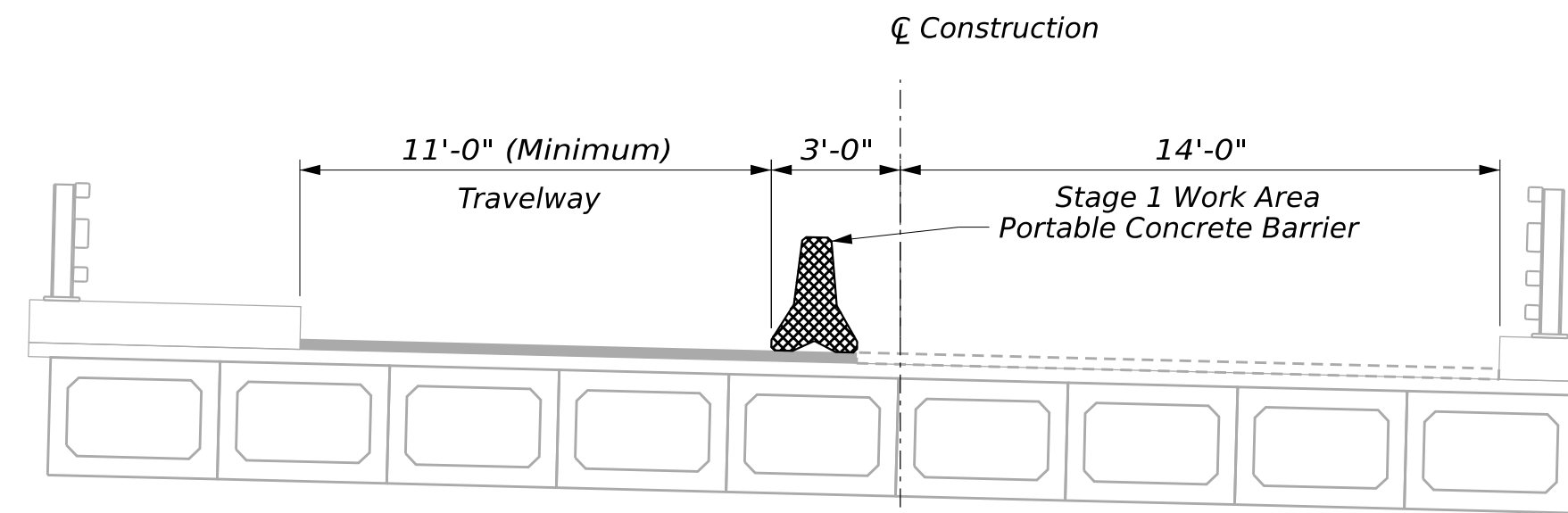
STATE OF MAINE
DEPARTMENT OF TRANSPORTATION
Federal Project No. 02839800
WIN 28398.00

SIGNATURE
P.E. NUMBER
DATE

PROJ. MANAGER	DATE	BY	DATE
DESIGN-DETAILED	02/07/2025	J. JAMES	
CHECKED-REVIEWED	04/14/2026	J. HASBROUCK	J. HASBROUCK
DESIGN-DETAILED		W. HODOUS	W. HODOUS
REVISIONS 1			
REVISIONS 2			
REVISIONS 3			
REVISIONS 4			
FIELD CHANGES			

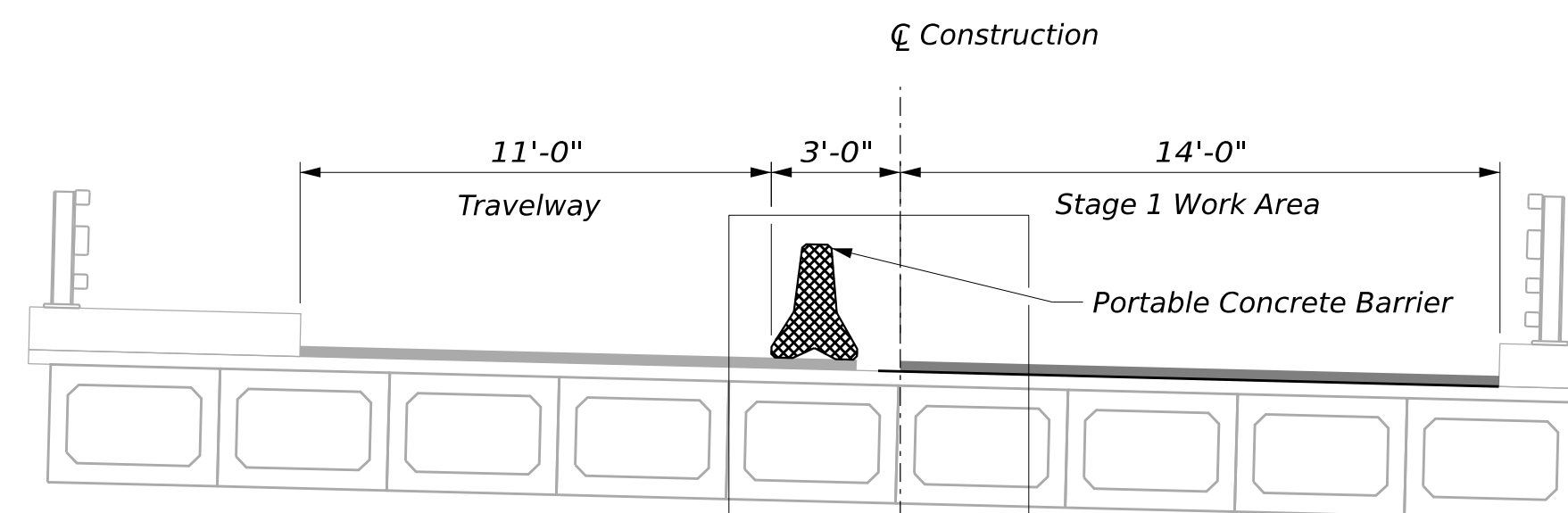
HOTEL BRIDGE NO. 2378
DAVIS STREAM
JEFFERSON
TYPICAL BRIDGE SECTIONS

SHEET NUMBER
4
OF 7



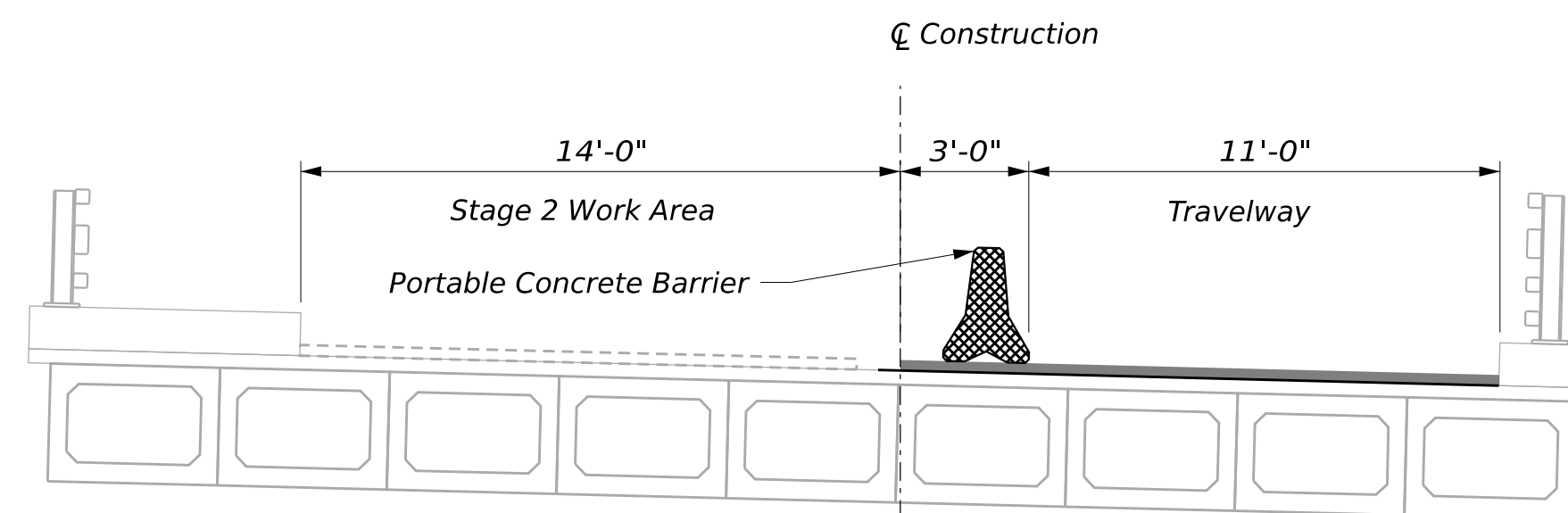
STAGE 1

Place temporary barrier to allow for alternating traffic on the left side.
Remove the existing wearing surface and waterproofing membrane on right.
Repair existing deteriorated deck concrete as directed by the Resident



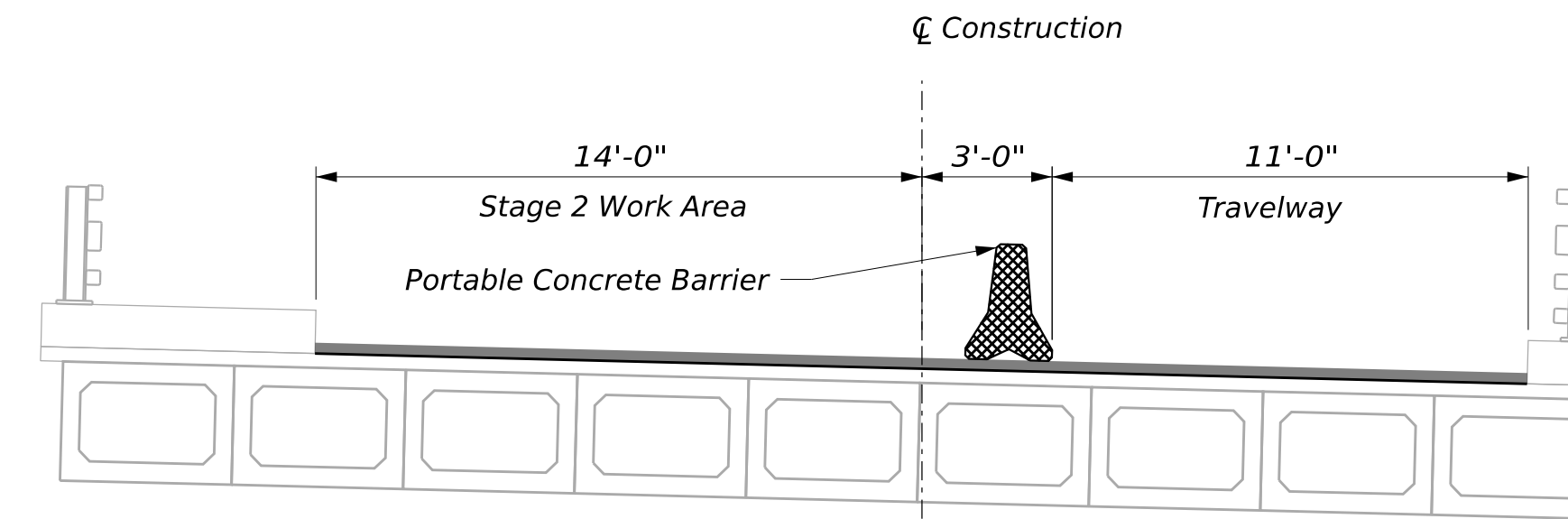
STAGE 2

Maintain the travelway for alternating traffic on left side.
Place new membrane and wearing surface on the right.



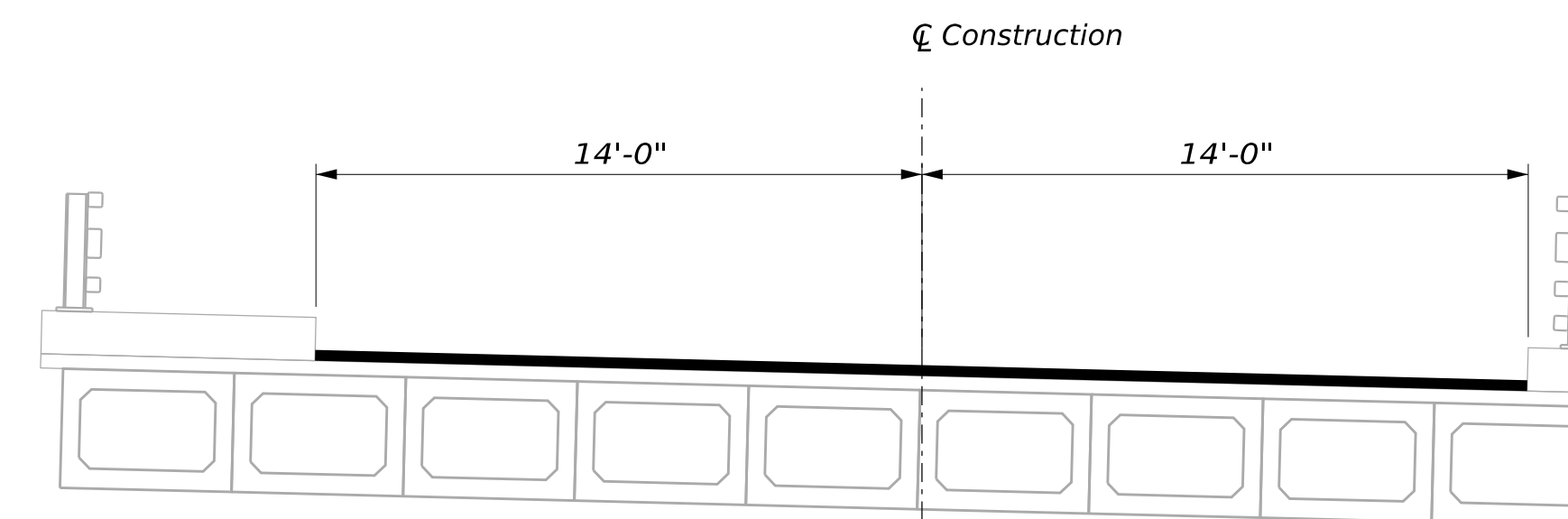
STAGE 3

Move temporary barriers to allow for alternating traffic on the right side.
Remove the existing wearing surface and waterproofing membrane on the left.
Repair existing deteriorated deck concrete as directed by the Resident



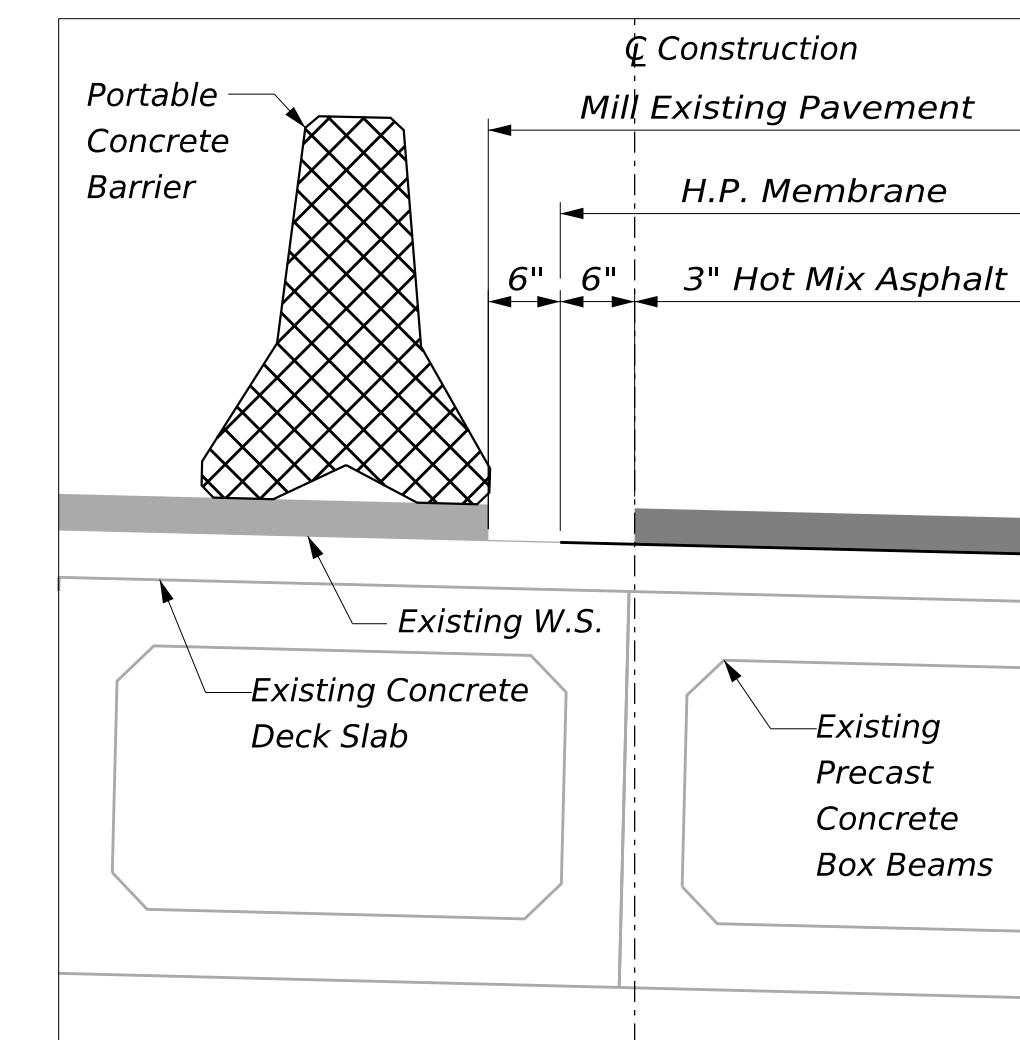
STAGE 4

Maintain the travelway for alternating traffic on the right side.
Place new membrane and wearing surface on the left.



STAGE 5

Remove temporary barriers and open bridge to two way traffic.



CENTERLINE DETAIL

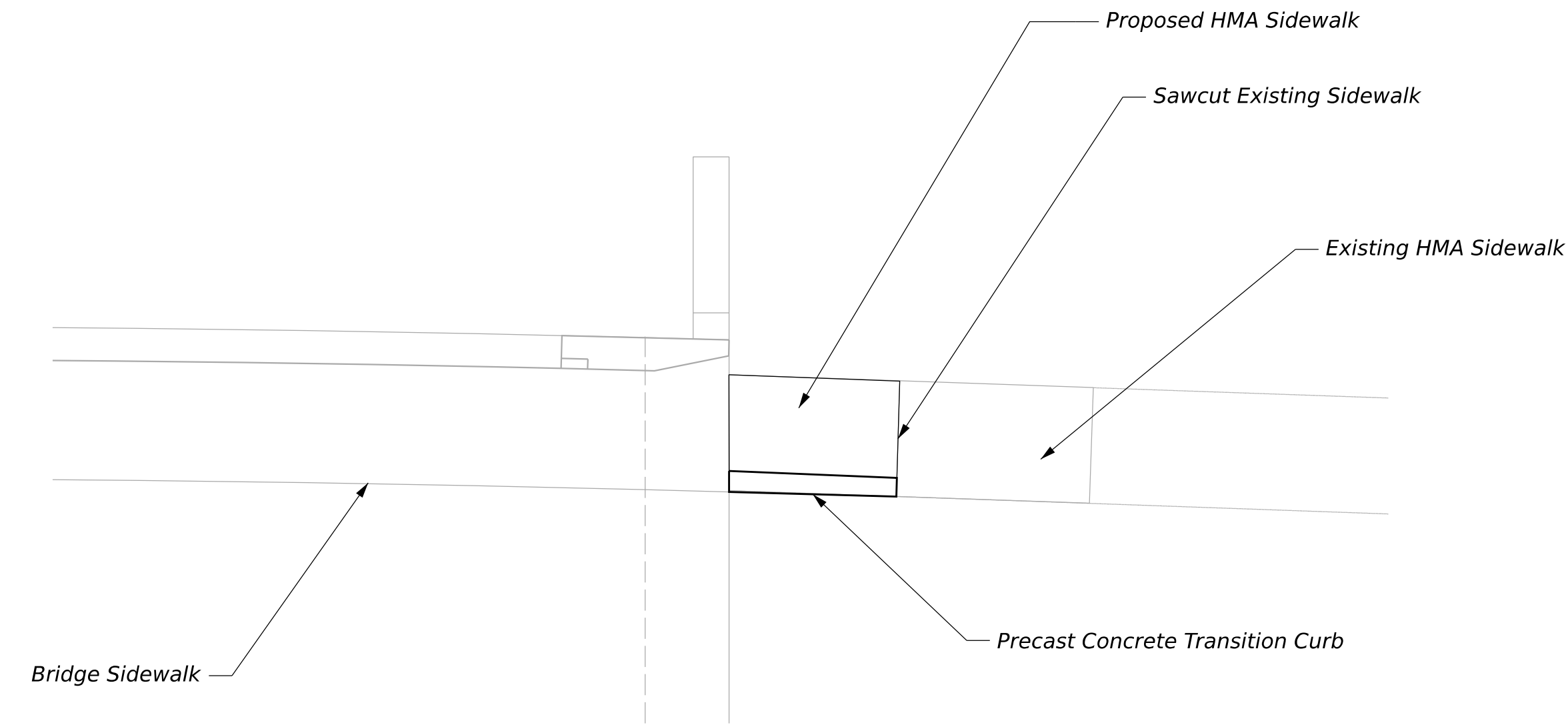
STATE OF MAINE
DEPARTMENT OF TRANSPORTATION
Federal Project No. 02839800
WIN 28398.00

SIGNATURE
P.E. NUMBER
DATE

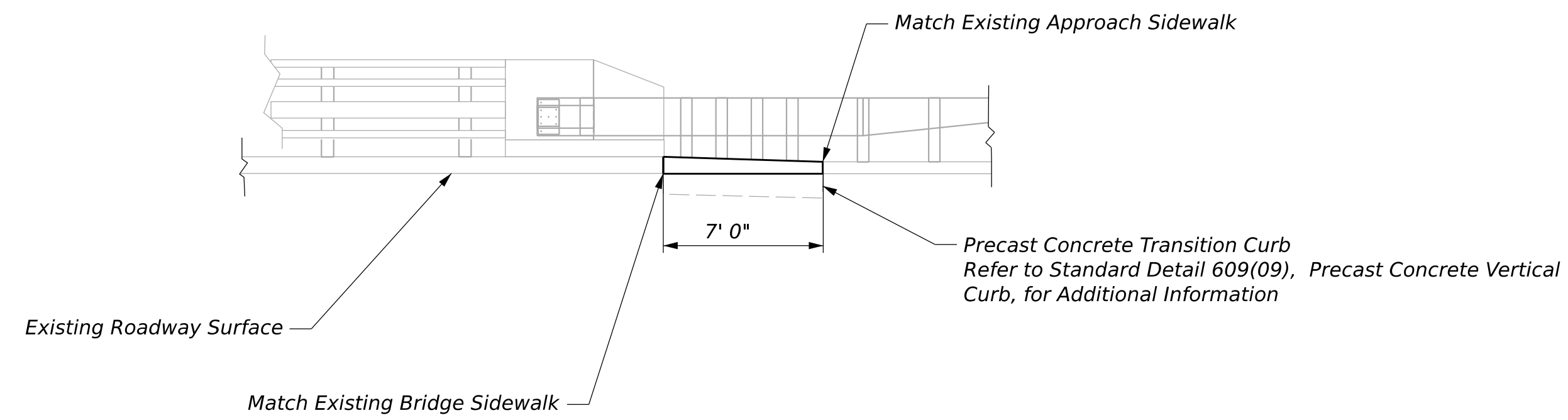
PROJ. MANAGER	CHARLE GUY	BY	DATE
DESIGN-DETAILED	J. JAMES	J. JAMES	02/07/2025
CHECKED-REVIEWED	J. HASBROUCK	J. HASBROUCK	04/14/2026
DESIGN-DETAILED	W. HODOUS	W. HODOUS	04/14/2026
DESIGN-DETAILED	W. HODOUS	W. HODOUS	04/14/2026
REVISIONS 1			
REVISIONS 2			
REVISIONS 3			
REVISIONS 4			
FIELD CHANGES			

HOTEL BRIDGE NO. 2378
DAVIS STREAM
JEFFERSON
STAGED CONSTRUCTION

SHEET NUMBER
5
OF 7



Sidewalk Repair Plan



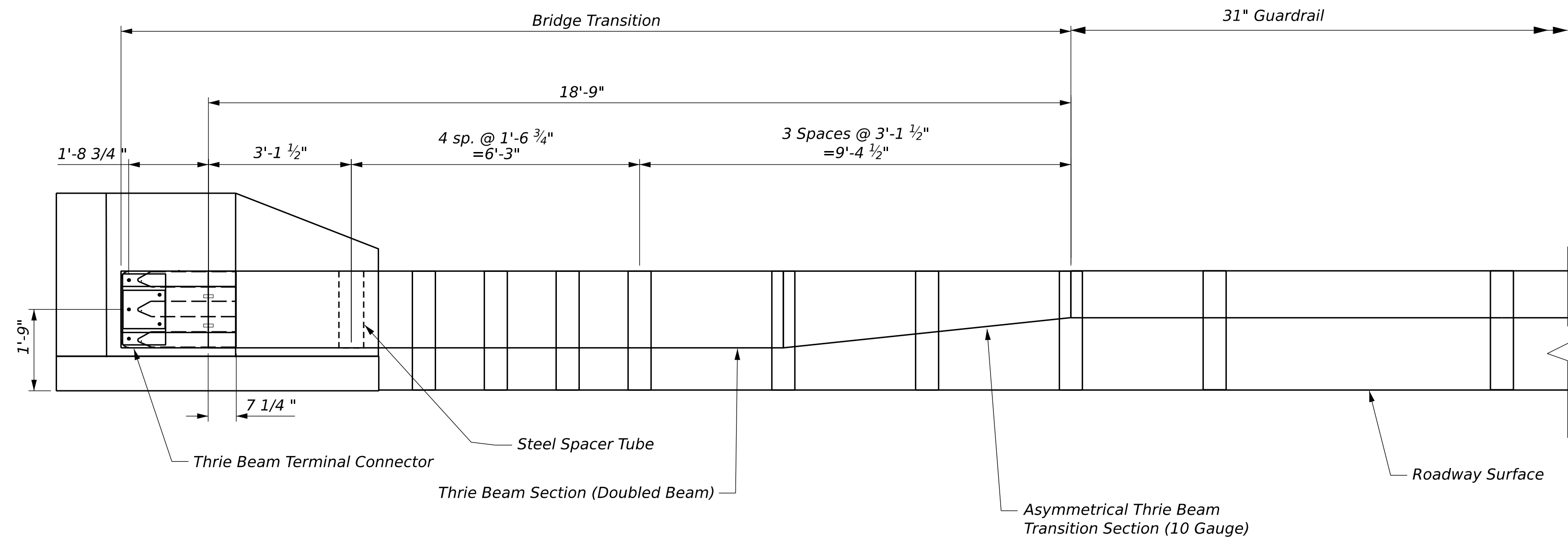
Sidewalk Repair Elevation

STATE OF MAINE
DEPARTMENT OF TRANSPORTATION
Federal Project No. 02839800
WIN 28398.00

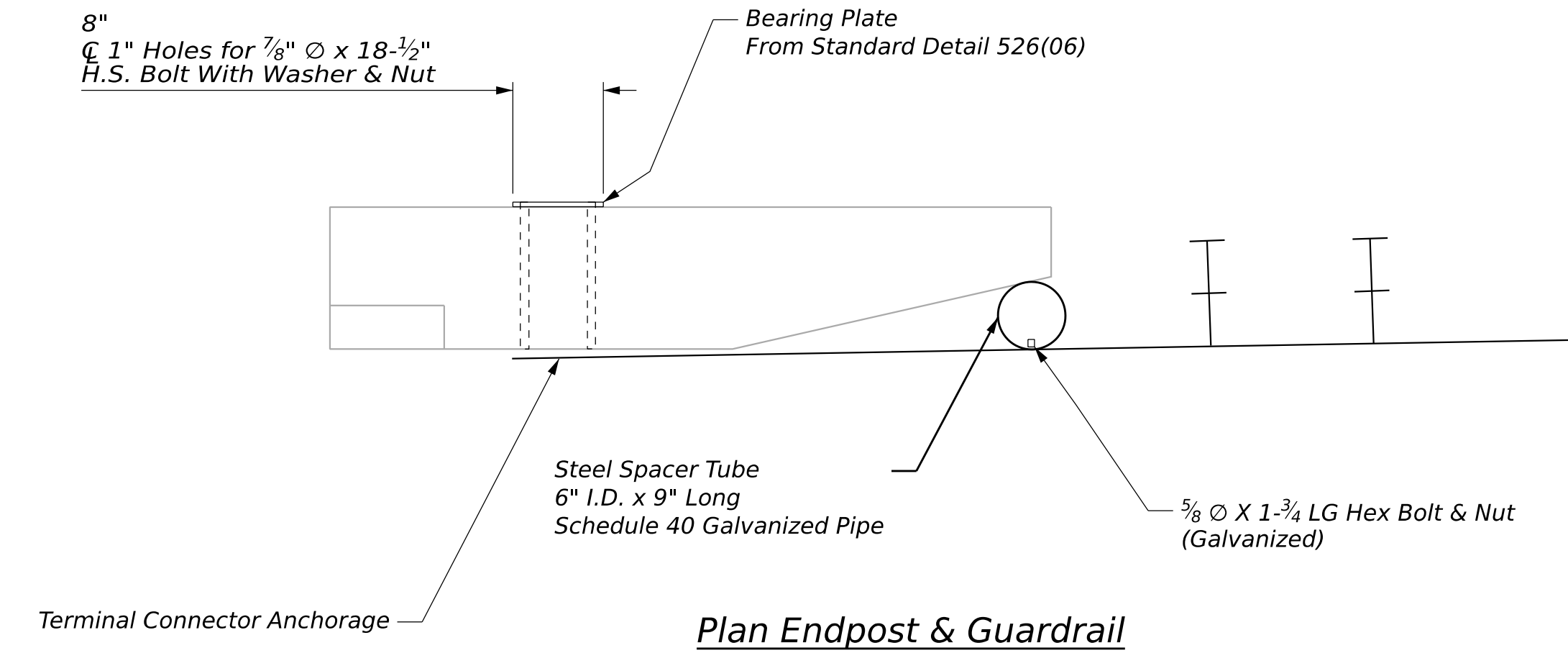
PROJ. MANAGER	CHARLIE GUY	BY	DATE
DESIGN-DETAILED	W. HODOUS	W. HODOUS	24/14/2026
CHECKED-REVIEWED	J. HASBROUCK	J. HASBROUCK	04/14/2026
DESIGN-DETAILED			SIGNATURE
REVISIONS 1			P.E. NUMBER
REVISIONS 2			DATE
REVISIONS 3			
REVISIONS 4			
FIELD CHANGES			

HOTEL BRIDGE NO. 2378
CROSSING DAVIS STREAM
JEFFERSON
SIDEWALK MODIFICATION

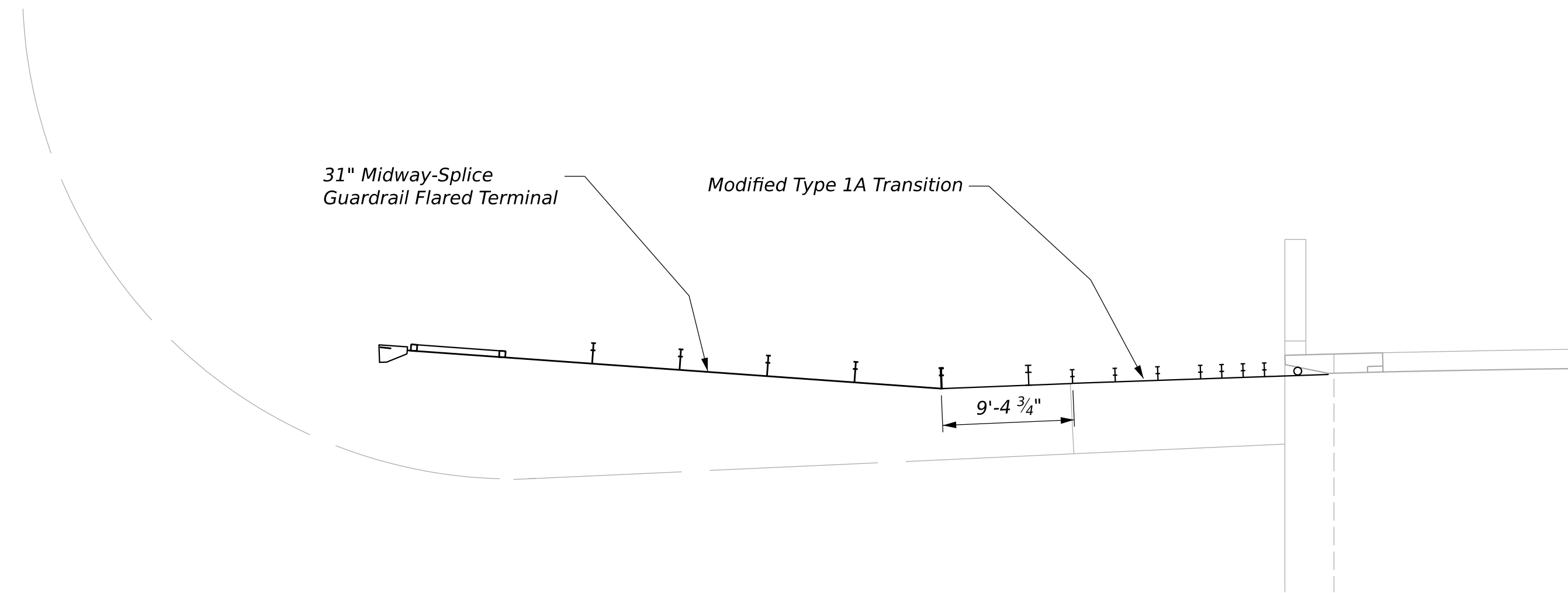
SHEET NUMBER
6
OF 7



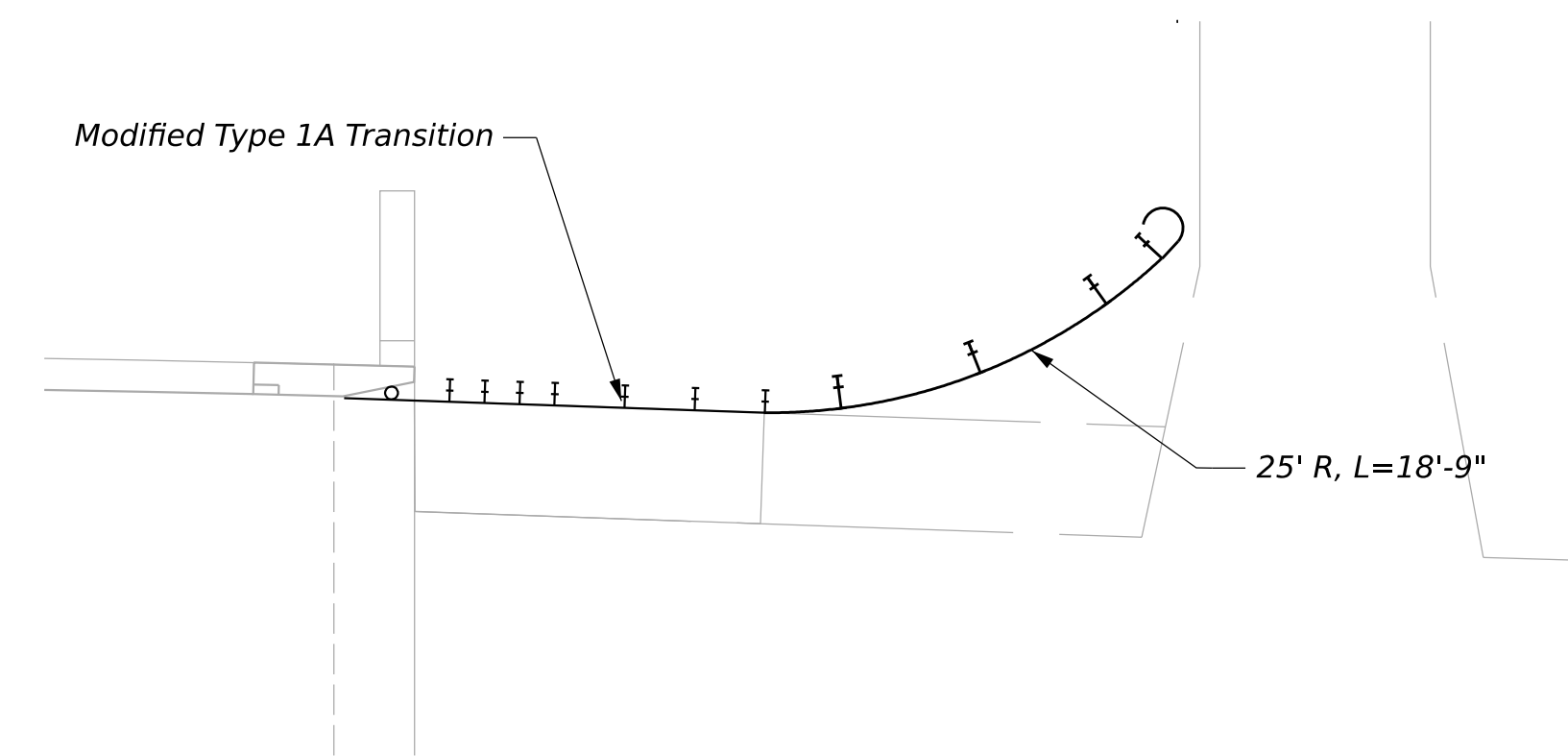
Modified Type 1A Transition Elevation



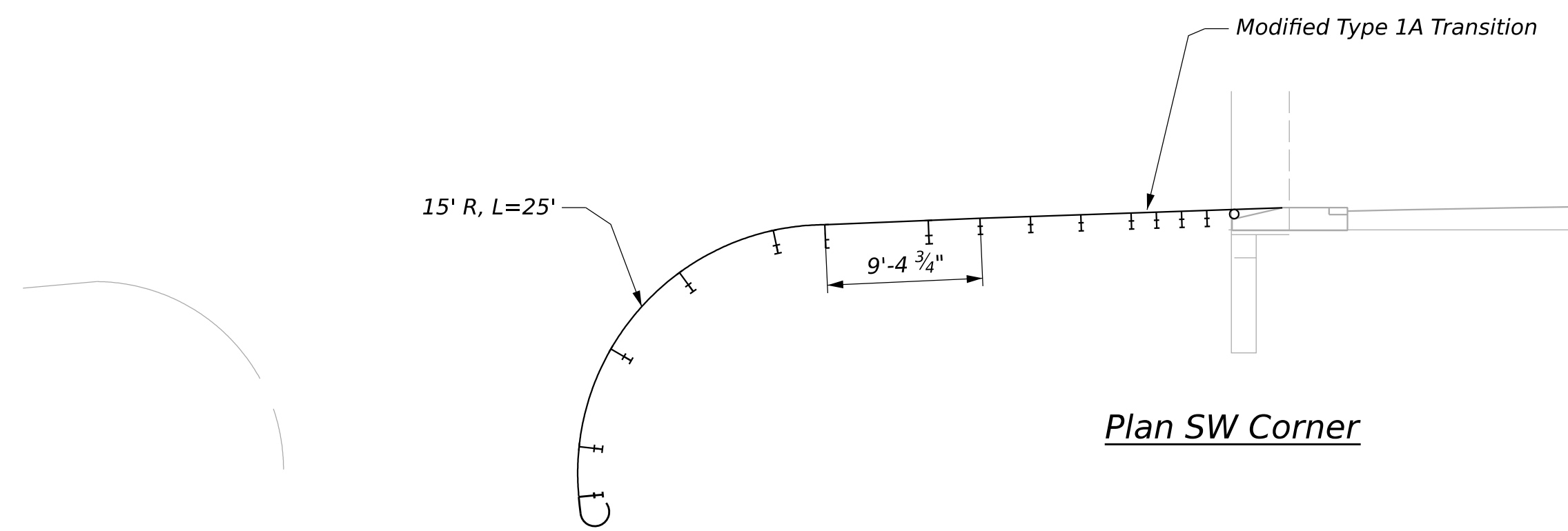
Plan Endpost & Guardrail



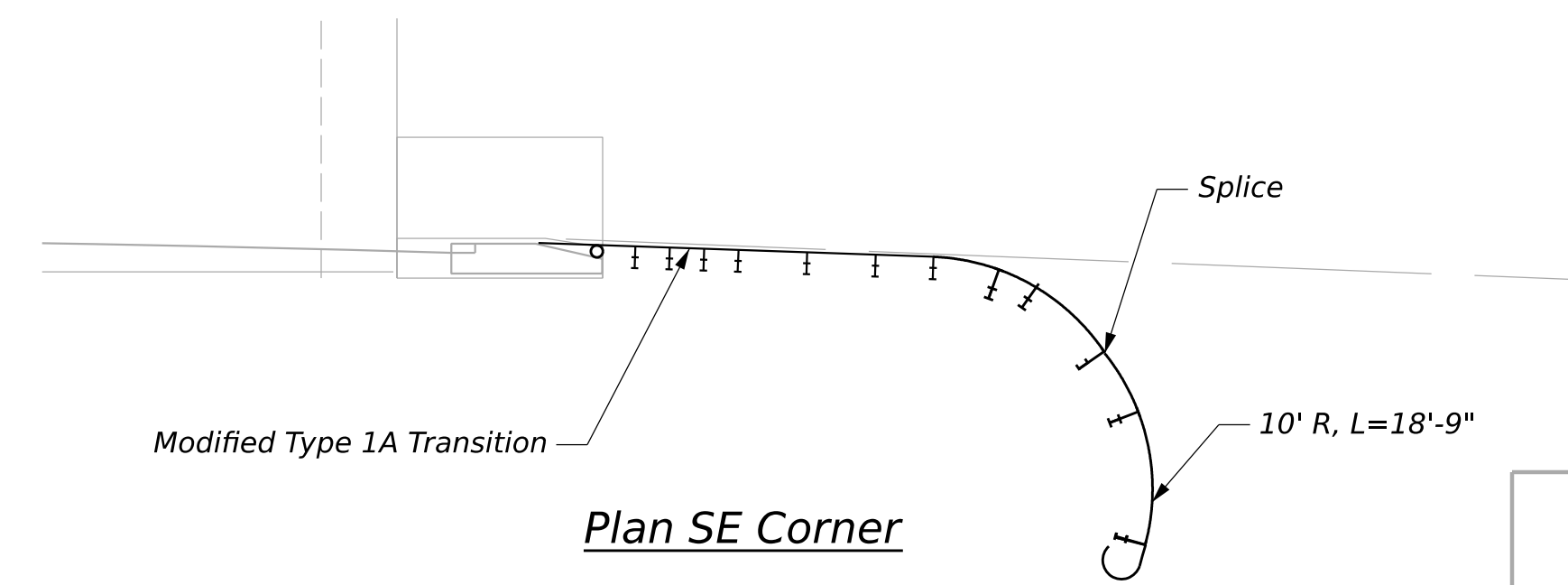
Plan NW Corner



Plan NE Corner



Plan SW Corner



Plan SE Corner

STATE OF MAINE
DEPARTMENT OF TRANSPORTATION
Federal Project No. 02839800
WIN 28398.00

PROJ. MANAGER	CHARLIE GUY	BY	DATE
DESIGN-DETAILED	W. HODOUS	W. HODOUS	24/14/2026
CHECKED/REVIEWED	J. HASBROUCK	J. HASBROUCK	04/14/2026
DESIGN-DETAILED			
REVISIONS 1			
REVISIONS 2			
REVISIONS 3			
REVISIONS 4			
FIELD CHANGES			

HOTEL BRIDGE NO. 2378
CROSSING DAVIS STREAM
JEFFERSON
GUARDRAIL LAYOUT

SHEET NUMBER
7
OF 7