

STATE OF MAINE
DEPARTMENT OF TRANSPORTATION



SPECIFICATIONS

Design: Load and Resistance Factor Design per AASHTO LRFD Bridge Design Specifications, Ninth Edition 2020.

HARPSWELL
CUMBERLAND COUNTY
EWING NARROWS BRIDGE
OVER
EWING NARROWS
MOUNTAIN ROAD
FEDERAL PROJECT NO. 2725800
STATE PROJECT NO. 027258.00
PROJECT LENGTH 0.13 mi.
BRIDGE NO. 6217

LIST OF DRAWINGS

Title Sheet	1
Estimated Quantities & General Construction Notes	2
General Plan	3
Sections and Details	4
Bridge Drain Grate Modification	5
Staged Construction Plans	6,7

UTILITIES

Central Maine Power
Consolidated Communications

TRAFFIC DATA

Current (2023) AADT	2240
Future (2043) AADT	2460
DHV - % of AADT	14
Design Hour Volume	344
Heavy Trucks (% of AADT)	6
Heavy Trucks (% of DHV)	3
Directional Distribution (% of DHV)	54
18 kip Equivalent P 2.0	39
18 kip Equivalent P 2.5	37
Design Speed (mph)	45

MAINTENANCE OF TRAFFIC

Maintain one lane of alternating one-way traffic using temporary traffic signals.

PROJECT LOCATION	Ewing Narrows Bridge #6217 over Ewing Narrows Located 0.16 of a mile west of Salty Lane Lat./Long. 43°48'59.02" N 69°57'11.2" W
PROGRAM AREA	Bridge Program
OUTLINE OF WORK	Bridge Wearing Surface Replacement

02725800 WIN 27258.00

STATE OF MAINE
DEPARTMENT OF TRANSPORTATION

APPROVED

DATE
8/16/24

COMMISSIONER:
DEPUTY CHIEF ENGINEER:

STATE OF MAINE
DEPARTMENT OF TRANSPORTATION
REGISTERED PROFESSIONAL ENGINEER
GARRETT GUSTAFSON
13853

SIGNATURE

P.E. NUMBER
13853
DATE
8-14-24

PROJECT INFORMATION

PROGRAM	BRIDGE
PROJECT MANAGER	GARY LIBBY
DESIGNER	GAG
CONSULTANT	
PROJECT RESIDENT	
CONTRACTOR	
PROJECT COMPLETION DATE	

HARPSWELL
EWING NARROWS BRIDGE

TITLE SHEET

SHEET NUMBER
1
OF 7

ESTIMATED QUANTITIES			
ITEM NO.	DESCRIPTION	QUANTITY	UNIT
202.127	REMOVING OF EXISTING BITUMINOUS PAVEMENT (2,100 SY)	1	LS
202.202	REMOVING PAVEMENT SURFACE	195	SY
403.2081	12.5 MM POLYMER MODIFIED HOT MIX ASPHALT SURFACE	250	T
403.2131	12.5 MM POLYMER MODIFIED HOT MIX ASPHALT BASE	15	T
409.15	BITUMINOUS TACK COAT - APPLIED	119	G
502.701	BRIDGE DRAIN GRATE MODIFICATION	16	EA
502.75	PLUGGING EXISTING BRIDGE DRAINS	16	EA
503.12	REINFORCING STEEL, FABRICATED AND DELIVERED	100	LB
503.13	REINFORCING STEEL, PLACING	100	LB
508.14	HIGH PERFORMANCE WATERPROOFING MEMBRANE (2,150 SY)	1	LS
515.21	PROTECTIVE COATING FOR CONCRETE SURFACES (830 SY)	1	LS
518.391	REPAIRING GRANITE CURB JOINT & BEDDING MORTAR	200	LF
518.50	REPAIR OF UPWARD FACING SURFACES - TO REINFSTEEL < 8 IN	200	SF
518.51	REPAIR OF UPWARD FACING SURFACES - BELOW REINFSTEEL < 8 IN	750	SF
518.52	REPAIR OF UPWARD FACING SURFACES - BELOW REINFSTEEL > = 8 IN	200	SF
520.241	BRIDGE JOINT MODIFICATION TYPE 1	1	EA
520.243	BRIDGE JOINT MODIFICATION TYPE 3	1	EA
526.301	PORTABLE CONCRETE BARRIER TYPE 1 (540 LF)	1	EA
527.34	WORK ZONE CRASH CUSHIONS	2	UN
627.733	4" WHITE OR YELLOW PAINTED PAVEMENT MARKING LINE	2,200	LF
627.77	REMOVING PAVEMENT MARKINGS	500	SF
627.78	TEMPORARY 4 INCH PAINTED PAVEMENT MARKING LINE, WHITE OR YELLOW	500	LF
629.05	HAND LABOR, STRAIGHT TIME	20	HR
631.12	ALL PURPOSE EXCAVATOR (INCLUDING OPERATOR)	20	HR
631.172	TRUCK - LARGE (INCLUDING OPERATOR)	20	HR
639.19	FIELD OFFICE TYPE B	1	EA
643.72	TEMPORARY TRAFFIC SIGNAL	1	LS
652.312	TYPE III BARRICADE	6	EA
652.33	DRUM	25	EA
652.34	CONE	25	EA
652.35	CONSTRUCTION SIGNS	300	SF
652.361	MAINTENANCE OF TRAFFIC CONTROL DEVICES	1	LS
652.38	FLAGGER	360	HR
652.41	PORTABLE CHANGABLE MESSAGE SIGN	2	EA
656.75	TEMPORARY SOIL EROSION AND WATER POLLUTION CONTROL	1	LS
659.10	MOBILIZATION	1	LS

GENERAL CONSTRUCTION NOTES

1. Protective Coating for Concrete Surfaces shall be applied to the following areas:

*All exposed surfaces of concrete curb,
Fascias down to the drip notch,
All exposed surfaces of Concrete Transition Barriers.*

2. Project information referred to below may be accessed at the following MaineDOT web address: <http://www.maine.gov/mdot/contractors/>

3. The existing bridge plans may be accessed at the MaineDOT web address. The plans are reproductions of the original drawings as prepared for the construction of the bridge. It is very unlikely that the plans will show any construction field changes or any alterations which may have been made to the bridge during its life span.

4. Quantities included for pay items measured and paid for by Lump Sum are estimated quantities and are provided by MaineDOT for informational purposes only. Lump Sum pay items will be paid for at the Contract Bid amount, with no addition or reduction in payment to the Contractor if the actual final quantities are different from the MaineDOT provided estimated quantities, except as follows:

a. If a Lump Sum pay item is eliminated, the requirements of Standard Specifications Section 109.2, Elimination of Items, will take precedence.

b. If other Contract Documents specifically allow a change in payment for a Lump Sum pay item, those requirements will be followed.

c. If a design change results in changes to estimated quantities for Lump Sum pay items, price adjustments will be made in accordance with Standard Specifications Section 109.7, Equitable Adjustments to Compensation and Time.

DECK REPAIR NOTES

Contractor shall repair areas of concrete deck as directed by the Resident. Locations of deck repairs are undetermined for this contract. The Resident will identify and mark areas for deck repair after removing the wearing surface. Payment for the deck repair work shall be under the appropriate 518 pay item.

2. If the depth of deteriorated concrete extends to the reinforcing steel, remove concrete to a minimum of 1" below the reinforcing steel.

JOINT MODIFICATION NOTES

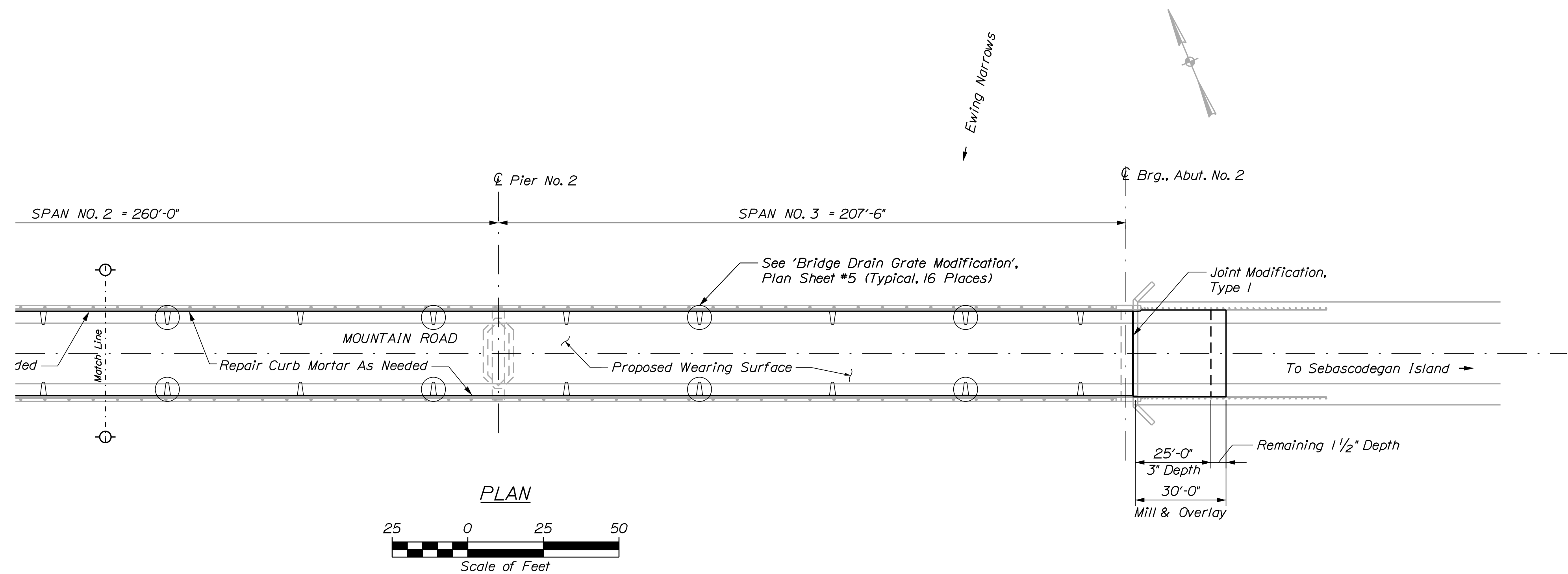
1. The Contractor shall modify existing joints in accordance with the applicable Special Provisions and Details.

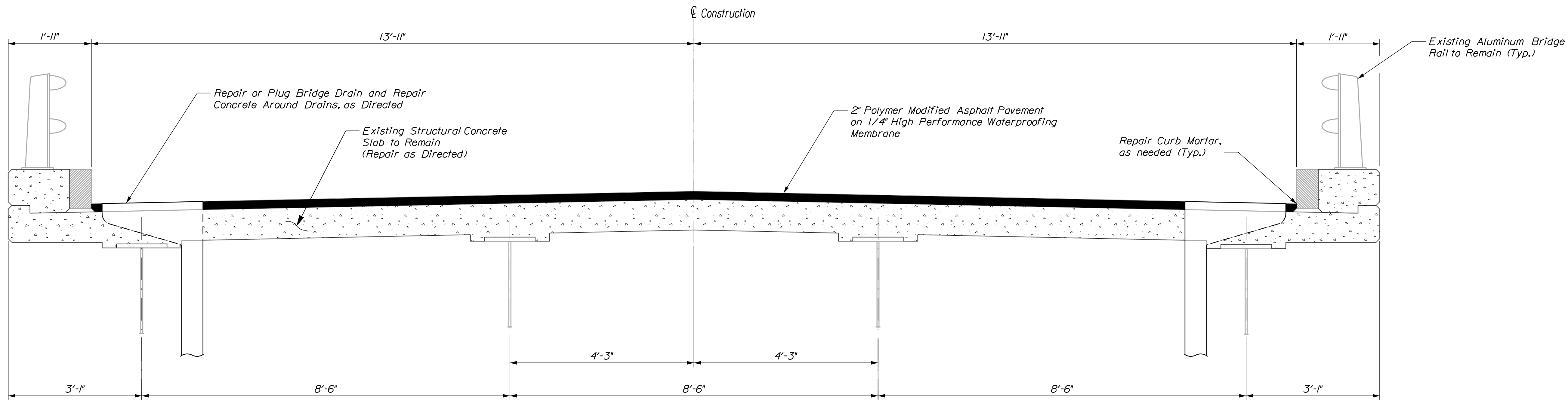
2. Compression seals provided shall have a movement rating of 0.5 inches.

3. New Reinforcing Steel furnished by the Contractor will be paid for under Pay Item No. 503.12, Reinforcing Steel, Fabricated and Delivered, and Pay Item No. 503.13, Reinforcing Steel, Placing, Drilling and anchoring will not be paid for directly but will be considered incidental to the reinforcing items.

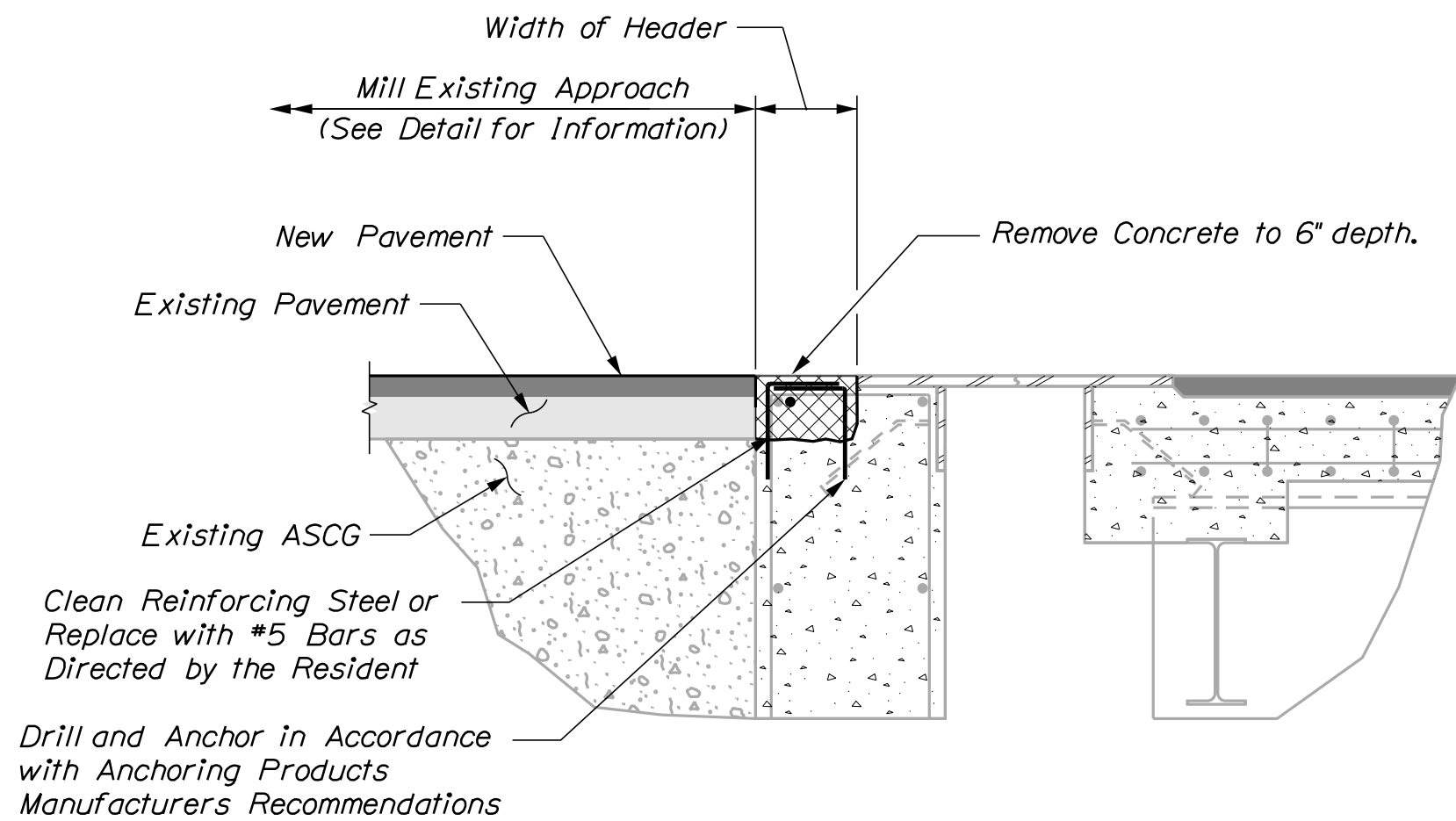
4. For drilling and anchoring, the anchoring material shall be chosen from the Maine DOT Qualified Products List and shall be submitted to the Resident for approval.

OF 7	SHEET NUMBER	EWING NARROWS BRIDGE				PROJ. MANAGER	GARY LIBBY	BY	DATE	STATE OF MAINE DEPARTMENT OF TRANSPORTATION STATE PROJECT NO. 027258.00
		EWING NARROWS				DESIGN-DETAILED	GAC	CLJ	Aug. 2024	
		HARPSWELL CUMBERLAND COUNTY				CHECKED-REVIEWED	DCE	GAC	Aug. 2024	
		ESTIMATED QUANTITIES & GENERAL CONSTRUCTION NOTES				DESIGN2-DETAILED2			SIGNATURE	
						DESIGN3-DETAILED3			P.E. NUMBER	
					REVISIONS 1					BRIDGE NO. 6217 WIN 27258.00 BRIDGE PLANS
					REVISIONS 2					
					REVISIONS 3					
					REVISIONS 4				DATE	
					FIELD CHANGES					

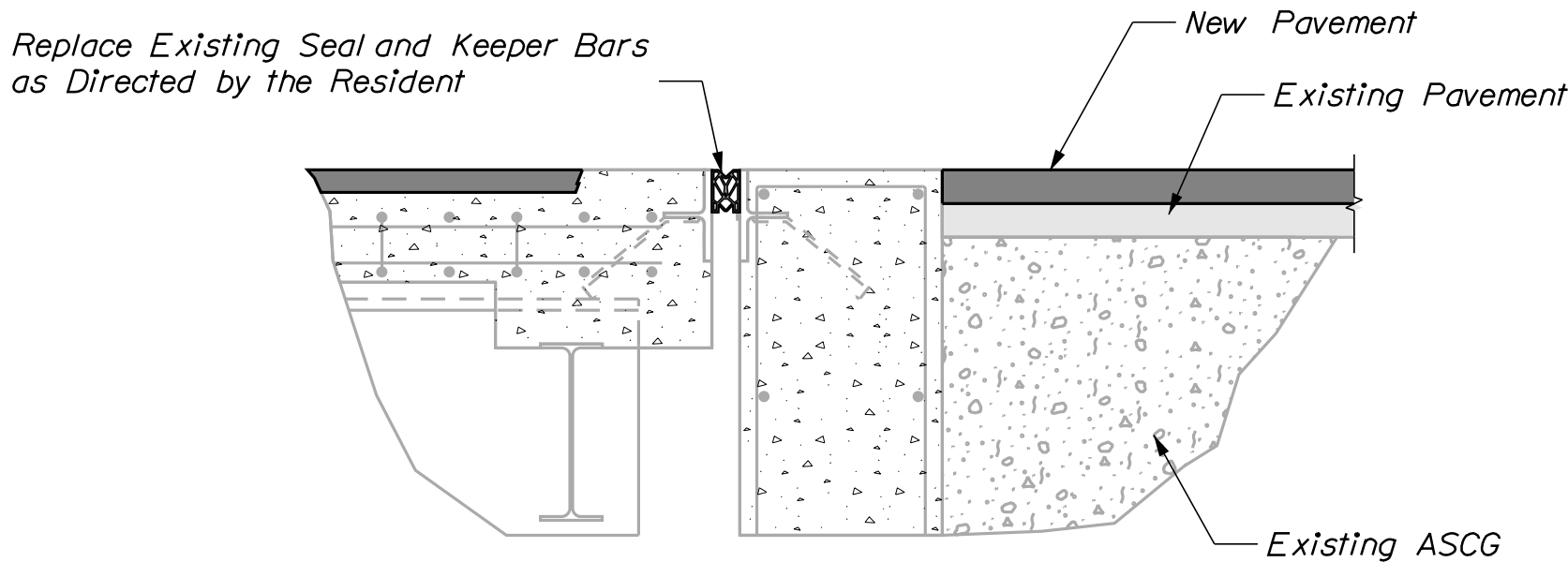




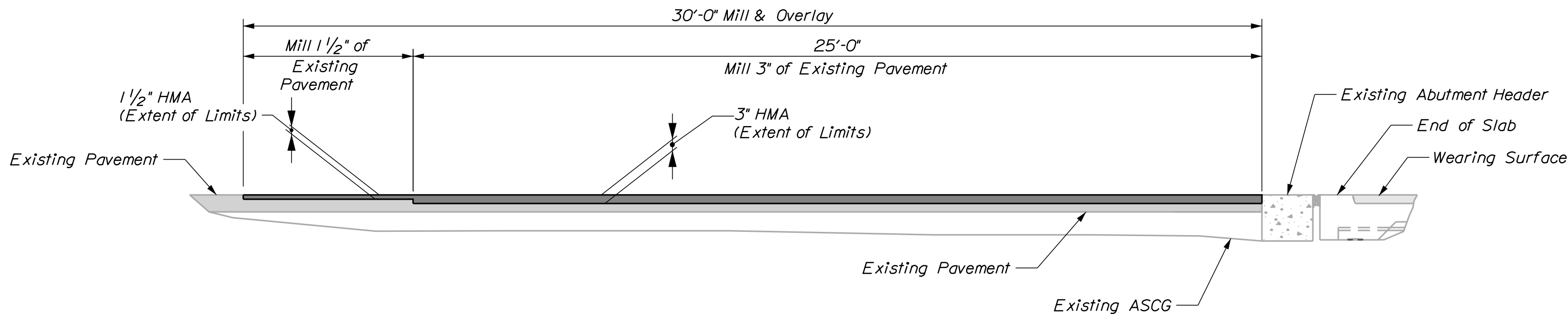
TYPICAL CROSS SECTION



JOINT MODIFICATION, TYPE III

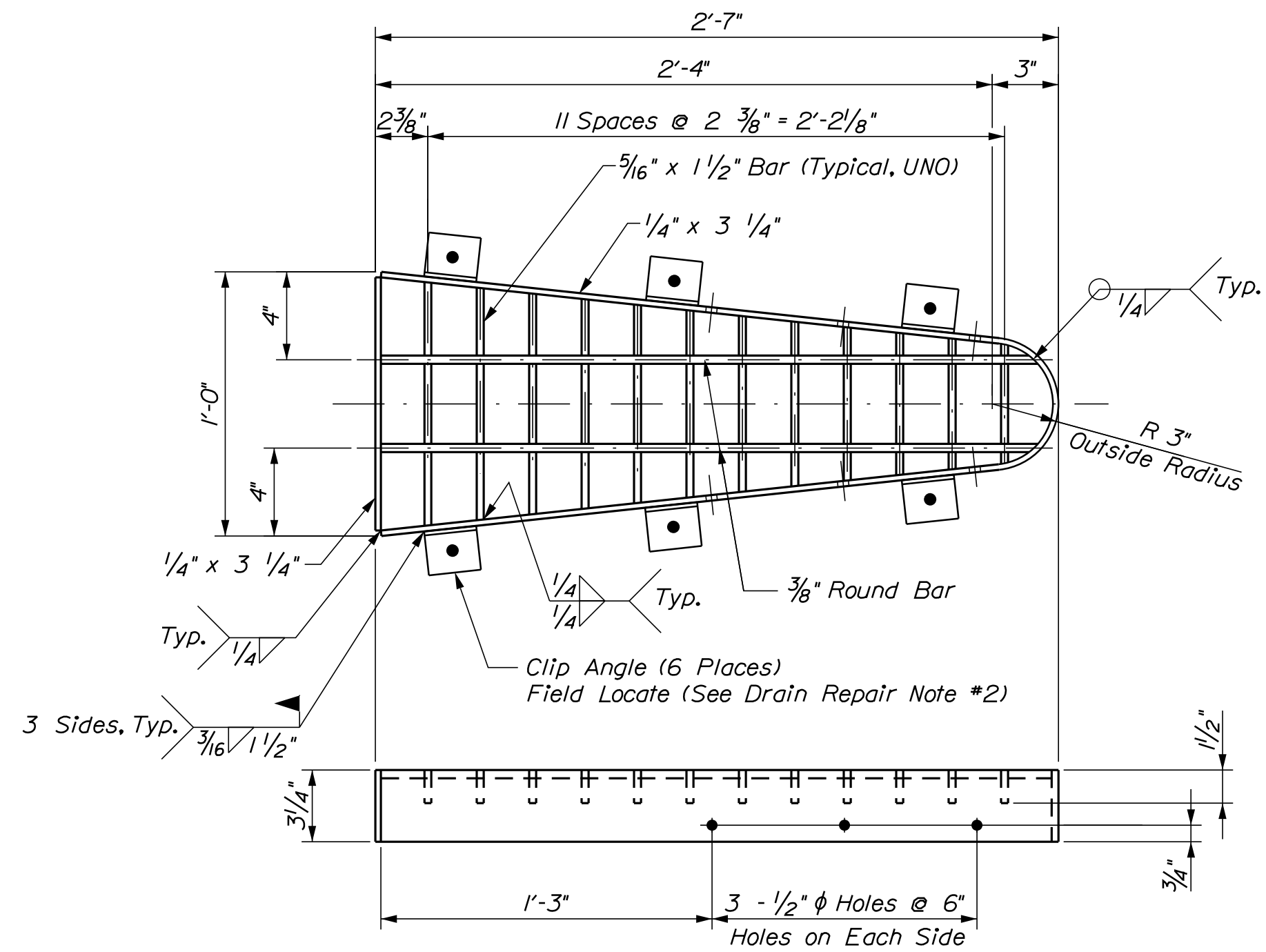


JOINT MODIFICATION, TYPE I

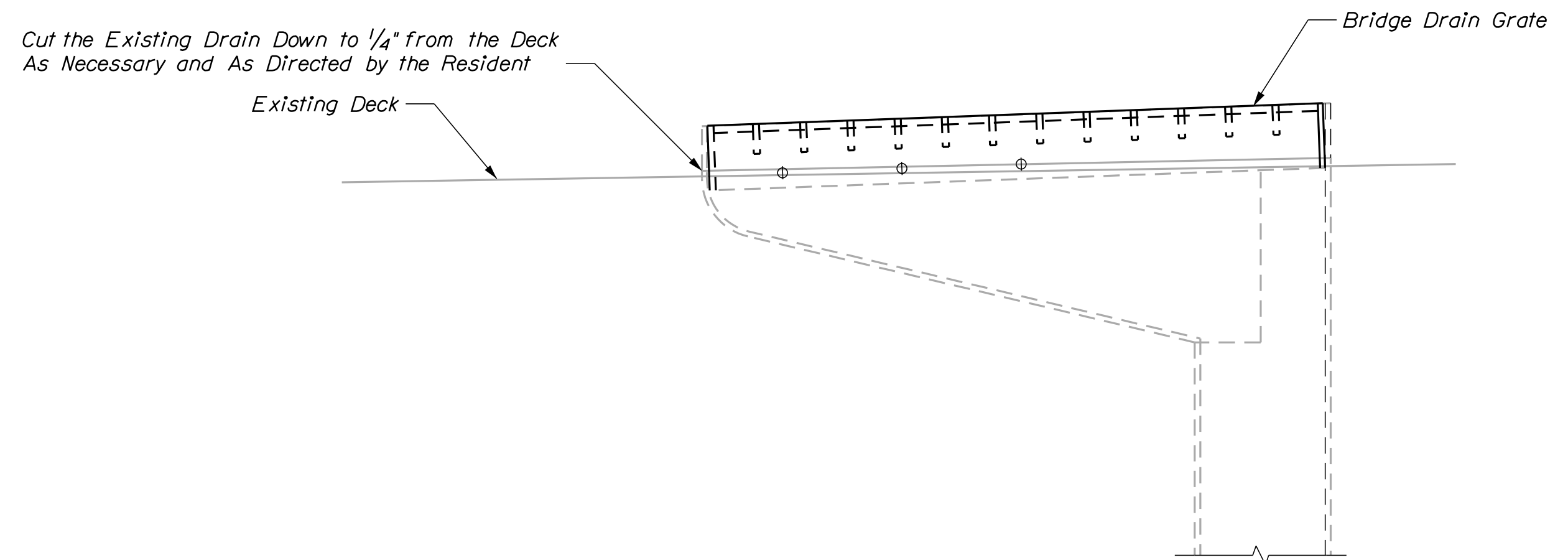
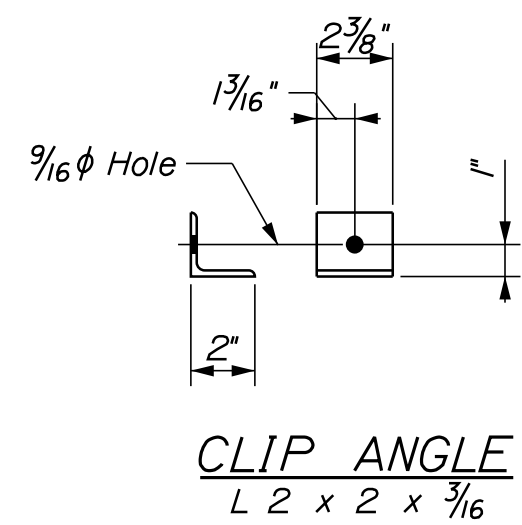


DETAIL OF PAVEMENT AT APPROACHES
(West Shown; East - Similar)

EWING NARROWS BRIDGE				STATE OF MAINE	
EWING NARROWS				DEPARTMENT OF TRANSPORTATION	
HARPSWELL CUMBERLAND COUNTY				2725800	
SECTIONS and DETAILS				SIGNATURE	
				P.E. NUMBER	
				DATE	
SHEET NUMBER				BRIDGE NO. 6217	
4				WIN	
OF 7				27258.00	
				BRIDGE PLANS	



BRIDGE DRAIN GRATE

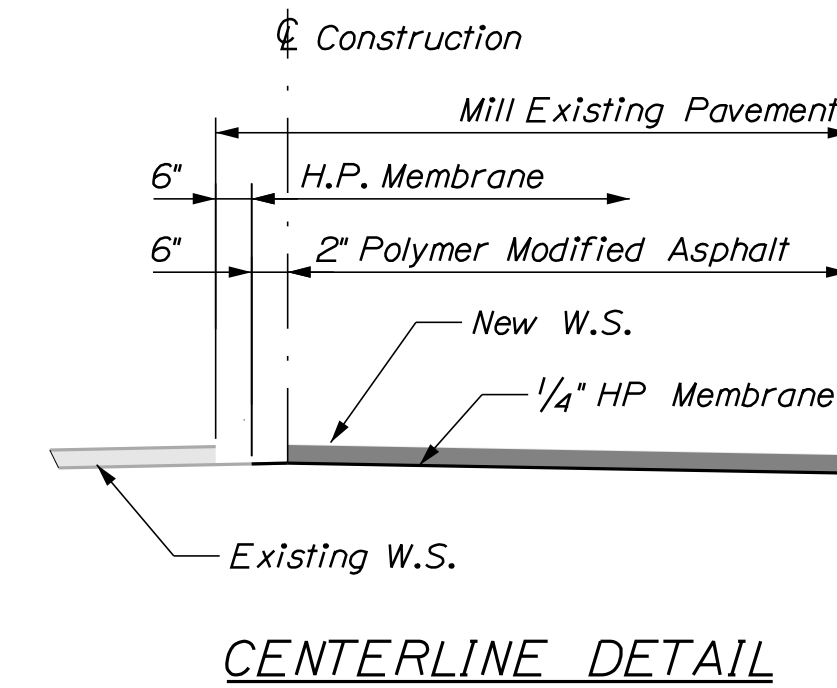
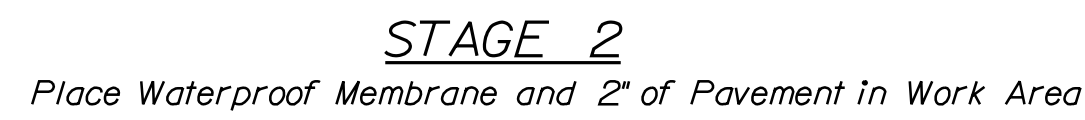
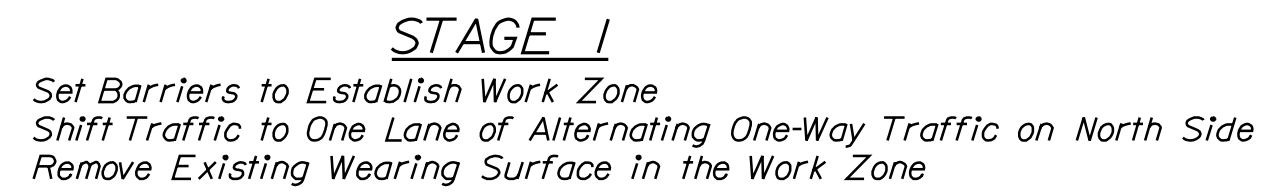


BRIDGE DRAIN REPAIR DETAIL

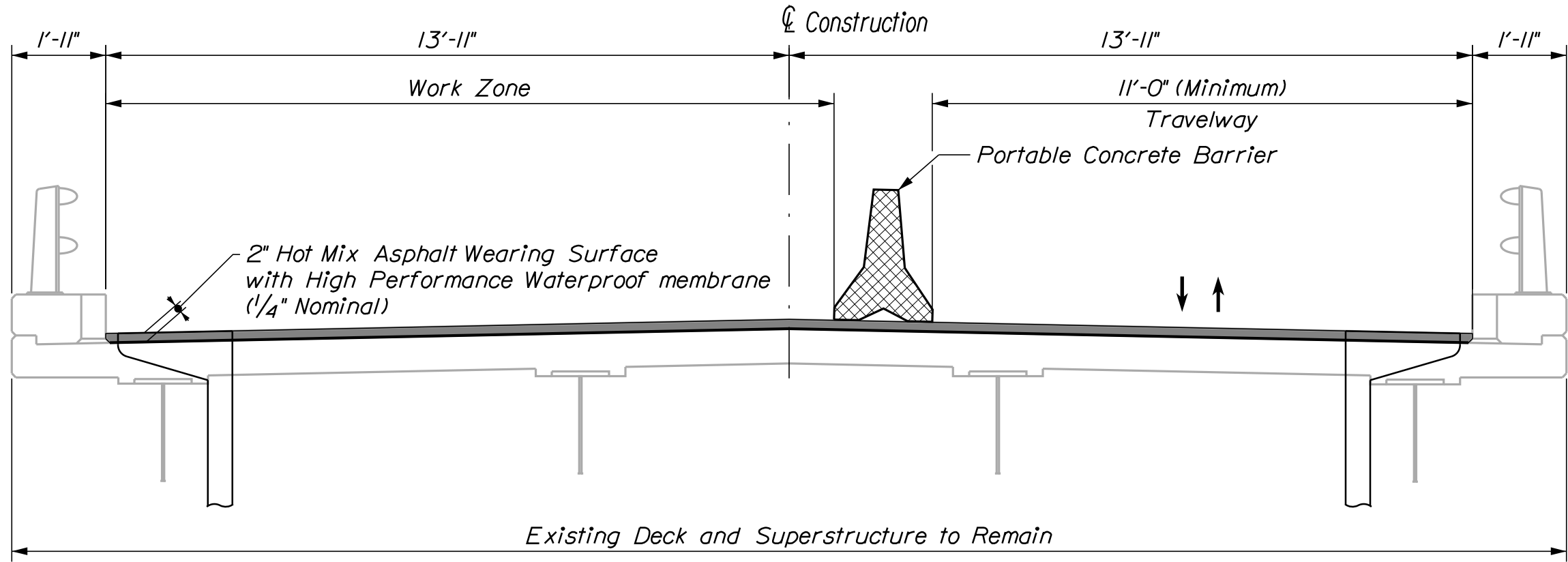
DRAIN REPAIR NOTES

1. Install 1/2" Diameter wedge-bolts at a minimum embedment depth of 4".
2. Install three (3) wedge-bolts on each side of each drain grate spaced a minimum of 6 inches apart. Space equally to the extent possible.

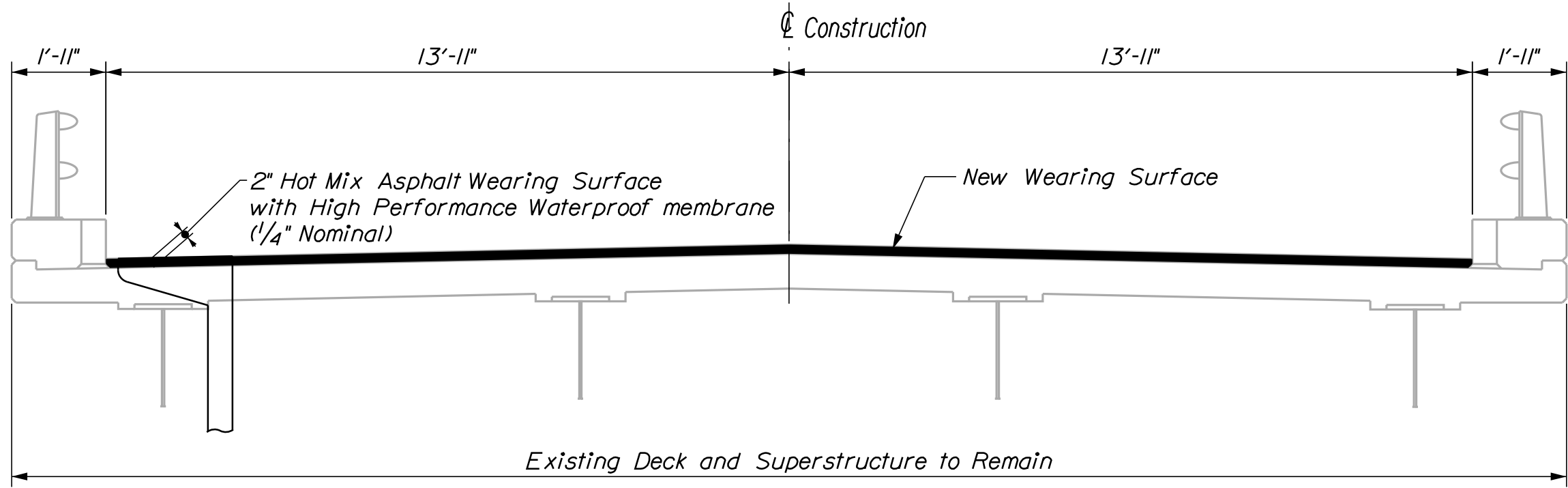
SHEET NUMBER <div>5</div>		EWING NARROWS BRIDGE		PROJ. MANAGER	GARY LIBBY	BY	DATE	STATE OF MAINE DEPARTMENT OF TRANSPORTATION		
		EWING NARROWS		DESIGN-DETAILED	CAC	CJL	Aug. 2024			
		HARPSWELL		CHECKED-REVIEWED	DCE	CAC	Aug. 2024			
		CUMBERLAND COUNTY		DESIGN2-DETAILED2	SIGNATURE					
		BRIDGE DRAIN GRATE MODIFICATION		DESIGN3-DETAILED3	P.E. NUMBER					
				REVISIONS 1				WIN 27258.00	BRIDGE NO. 6217	BRIDGE PLANS
				REVISIONS 2						
				REVISIONS 3						
				REVISIONS 4						
				FIELD CHANGES			DATE			



OF 7	SHEET NUMBER	EWING NARROWS BRIDGE				PROJ. MANAGER	GARY LIBBY	BY	DATE	STATE OF MAINE DEPARTMENT OF TRANSPORTATION
		EWING NARROWS				DESIGN-DETAILED	CAC	CLJ	Aug 2024	
		HARPSWELL CUMBERLAND COUNTY				CHECKED-REVIEWED	DCI	CAC	Aug 2024	
		STAGED CONSTRUCTION PLAN				DESIGN3-DETAILED3			SIGNATURE	
		(SHEET 1 of 2)				REVISIONS 1			P.E. NUMBER	
						REVISIONS 2				
						REVISIONS 3				
						REVISIONS 4			DATE	
						FIELD CHANGES				
BRIDGE NO. 6217									WIN	BRIDGE PLANS
272580.00									272580.00	



STAGE 4
Place Waterproof membrane and 2" of Pavement on North Side



STAGE 5
Remove Barriers and Open to Traffic

EWING NARROWS BRIDGE
EWING NARROWS
HARPSWELL CUMBERLAND COUNTY

STAGED CONSTRUCTION PLAN
(SHEET 2 of 2)

SHEET NUMBER

2

OF 7

STATE OF MAINE
DEPARTMENT OF TRANSPORTATION

2725800

WIN
27258.00

BRIDGE NO. 6217
BRIDGE PLANS

PROJ. MANAGER	GARY LIBBY	BY	DATE
DESIGN-DETAILED	GAC	GLJ	Aug 2024
CHECKED-REVIEWED	DCE	CAC	Aug 2024
DESIGN-DETAILED			SIGNATURE
REVISIONS 1			P.E. NUMBER
REVISIONS 2			DATE
REVISIONS 3			
REVISIONS 4			
FIELD CHANGES			

STATE OF MAINE
DEPARTMENT OF TRANSPORTATION



SPECIFICATIONS

Design: Load and Resistance Factor Design per AASHTO LRFD Bridge Design Specifications, Ninth Edition 2020.

LIST OF DRAWINGS

Title Sheet	1
Estimated Quantities & General Construction Notes	2
General Plan	3
Typical Sections and Details	4
Staging Plans	5,6
Construction and Curtain Steel Details	7

WISCASSET, WESTPORT ISLAND
LINCOLN COUNTY
WESTPORT - WISCASSET BRIDGE
OVER
COWSEAGAN NARROWS
WESTPORT BRIDGE RD. (ROUTE 144)
FEDERAL PROJECT NO. 2726000
PROJECT LENGTH 0.13 mi.
BRIDGE NO. 3180

UTILITIES

Central Maine Power
Charter Communications (Spectrum)
Consolidated Communications

TRAFFIC DATA

Current (2023) AADT	1630
Future (2043) AADT	1790
DHV - % of AADT	10
Design Hour Volume	179
Heavy Trucks (% of AADT)	5
Heavy Trucks (% of DHV)	4
Directional Distribution (% of DHV)	60
18 kip Equivalent P 2.0	27
18 kip Equivalent P 2.5	26
Design Speed (mph)	45

MAINTENANCE OF TRAFFIC

Maintain one lane of alternating one-way traffic using temporary traffic signals.

PROJECT LOCATION	Westport-Wiscasset Bridge #3180 over Cowseagan Narrows. Located 0.10 of a mile west of Burnell Road Lat./Long. 43°58'22.9" N 69°40'25.9" W
PROGRAM AREA	Bridge Program
OUTLINE OF WORK	Bridge Wearing Surface Replacement

STATE OF MAINE DEPARTMENT OF TRANSPORTATION	APPROVED	DATE
COMMISSIONER:	DEFECT & CHIEF ENGINEER:	8/16/24

	SIGNATURE	P.E. NUMBER	DATE
	13553	8-14-24	

PROJECT INFORMATION	BRIDGE
PROGRAM	GARY LIBBY
PROJECT MANAGER	GARRETT GUSTAFSON
DESIGNER	
CONSULTANT	
PROJECT RESIDENT	
CONTRACTOR	
PROJECT COMPLETION DATE	

WISCASSET, WESTPORT ISLAND Westport-Wiscasset Bridge	TITLE SHEET
---	-------------

SHEET NUMBER
1
OF 7

WIN 27260.00

2726000

ESTIMATED QUANTITIES			
ITEM NO.	DESCRIPTION	QUANTITY	UNIT
202.127	REMOVING OF EXISTING BITUMINOUS PAVEMENT (2105 SY)	1	LS
202.202	REMOVING PAVEMENT SURFACE	190	SY
403.2081	12.5 MM POLYMER MODIFIED HOT MIX ASPHALT SURFACE	250	T
403.2131	12.5 MM POLYMER MODIFIED HOT MIX ASPHALT BASE	15	T
409.15	BITUMINOUS TACK COAT - APPLIED	119	G
508.14	HIGH PERFORMANCE WATERPROOFING MEMBRANE (2150 SY)	1	LS
515.21	PROTECTIVE COATING FOR CONCRETE SURFACES (1300 SY)	1	LS
518.391	REPAIR GRANITE CURB JOINT & BEDDING MORTAR	200	LF
518.50	REPAIR OF UPWARD FACING SURFACES - TO REINFSTEEL < 8 IN	200	SF
518.51	REPAIR OF UPWARD FACING SURFACES - BELOW REINFSTEEL < 8 IN	750	SF
518.52	REPAIR OF UPWARD FACING SURFACES > = 8 IN	2	CY
520.241	BRIDGE JOINT MODIFICATION TYPE 1	1	EA
521.33	FABRIC CURTAIN FOR FINGER JOINT	5	EA
627.733	4" WHITE OR YELLOW PAINTED PAVEMENT MARKING LINE	2,200	LF
627.77	REMOVING PAVEMENT MARKINGS	500	SF
627.78	TEMPORARY 4 INCH PAINTED PAVEMENT MARKING LINE, WHITE OR YELLOW	500	LF
629.05	HAND LABOR, STRAIGHT TIME	20	HR
631.12	ALL PURPOSE EXCAVATOR (INCLUDING OPERATOR)	20	HR
631.172	TRUCK - LARGE (INCLUDING OPERATOR)	20	HR
639.19	FIELD OFFICE TYPE B	1	EA
643.72	TEMPORARY TRAFFIC SIGNAL	1	LS
652.312	TYPE III BARRICADE	6	EA
652.33	DRUM	25	EA
652.34	CONE	25	EA
652.35	CONSTRUCTION SIGNS	300	SF
652.361	MAINTENANCE OF TRAFFIC CONTROL DEVICES	1	LS
652.38	FLAGGER	360	HR
652.41	PORTABLE CHANGABLE MESSAGE SIGN	2	EA
656.75	TEMPORARY SOIL EROSION AND WATER POLLUTION CONTROL	1	LS
659.10	MOBILIZATION	1	LS

GENERAL CONSTRUCTION NOTES

1. Protective Coating for Concrete Surfaces shall be applied to the following areas:

- All exposed surfaces of concrete barrier railing,
- Fascias down to the drip notch,
- All curbs and sidewalks,
- All exposed surfaces of Concrete Transition Barriers.

2. Project information referred to below may be accessed at the following MaineDOT web address: <http://www.maine.gov/mdot/contractors/>

3. The existing bridge plans may be accessed at the MaineDOT web address. The plans are reproductions of the original drawings as prepared for the construction of the bridge. It is very unlikely that the plans will show any construction field changes or any alterations which may have been made to the bridge during its life span.

4. Quantities included for pay items measured and paid for by Lump Sum are estimated quantities and are provided by MaineDOT for informational purposes only. Lump Sum pay items will be paid for at the Contract Bid amount, with no addition or reduction in payment to the Contractor if the actual final quantities are different from the MaineDOT provided estimated quantities, except as follows:

a. If a Lump Sum pay item is eliminated, the requirements of Standard Specifications Section 109.2, Elimination of Items, will take precedence.

b. If other Contract Documents specifically allow a change in payment for a Lump Sum pay item, those requirements will be followed.

c. If a design change results in changes to estimated quantities for Lump Sum pay items, price adjustments will be made in accordance with Standard Specifications Section 109.7, Equitable Adjustments to Compensation and Time.

DECK REPAIR NOTES

1. Contractor shall repair areas of concrete deck as directed by the Resident. Locations of deck repairs are undetermined for this contract. The Resident will identify and mark areas for deck repair after removing the wearing surface. Payment for the deck repair work shall be under the appropriate 518 pay item.

2. If the depth of deteriorated concrete extends to the reinforcing steel, remove concrete to a minimum of 1" below the reinforcing steel.

JOINT MODIFICATION NOTES

1. The Contractor shall modify existing joints in accordance with the applicable Special Provisions and Details.

2. Compression seals furnished shall have a movement rating of 0.5 inches.

STATE OF MAINE
DEPARTMENT OF TRANSPORTATION

2726000

WIN
27260.00

BRIDGE NO. 3190
BRIDGE PLANS

Westport-Wiscasset Bridge
COWSEAGAN NARROWS
WISCASSET, WESTPORT ISLAND LINCOLN COUNTY

ESTIMATED QUANTITIES &
GENERAL CONSTRUCTION NOTES

SHEET NUMBER
2
OF 7

PROJ. MANAGER
DESIGN-DETAILED
CHECKED-REVIEWED
DESIGNS-DETAILED
REVISIONS 1
REVISIONS 2
REVISIONS 3
REVISIONS 4
FIELD CHANGES

PROJ. MGR
GARY
LIBBY

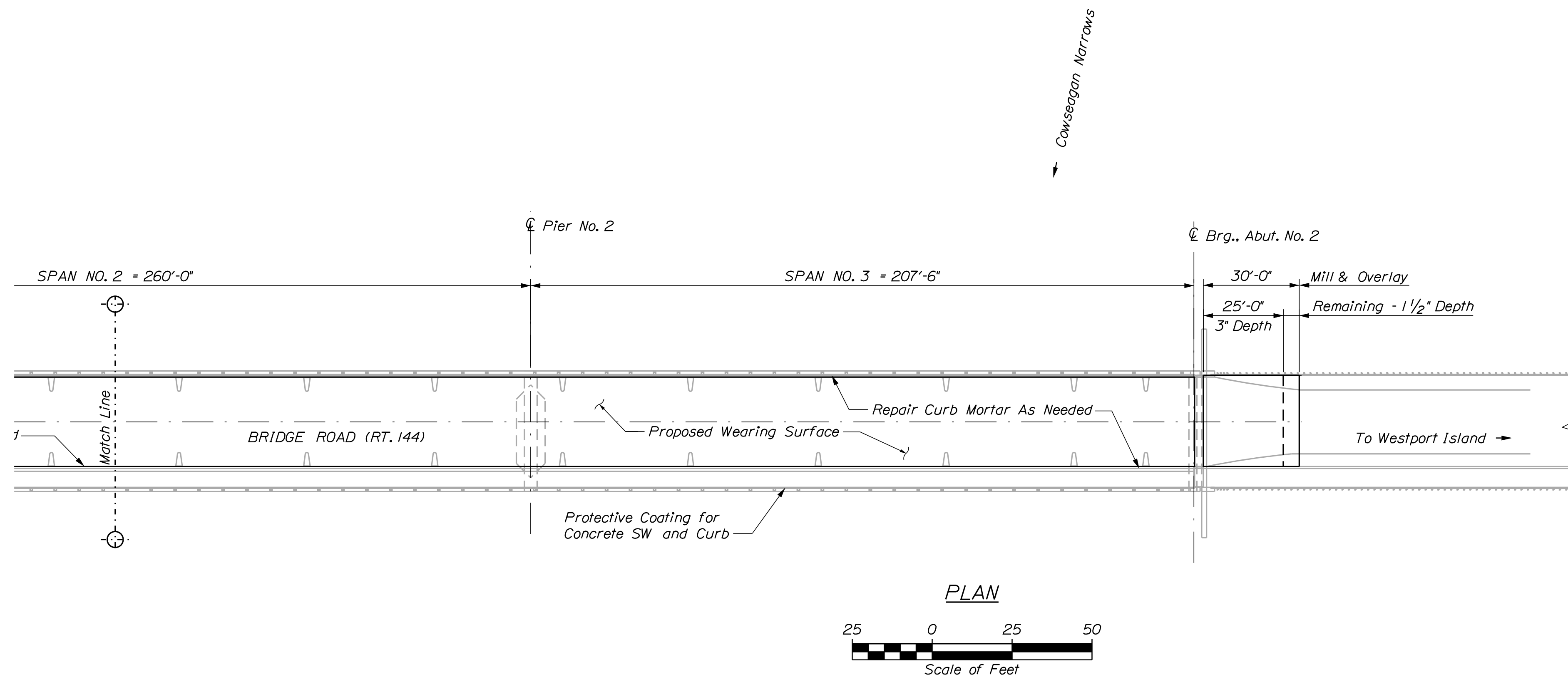
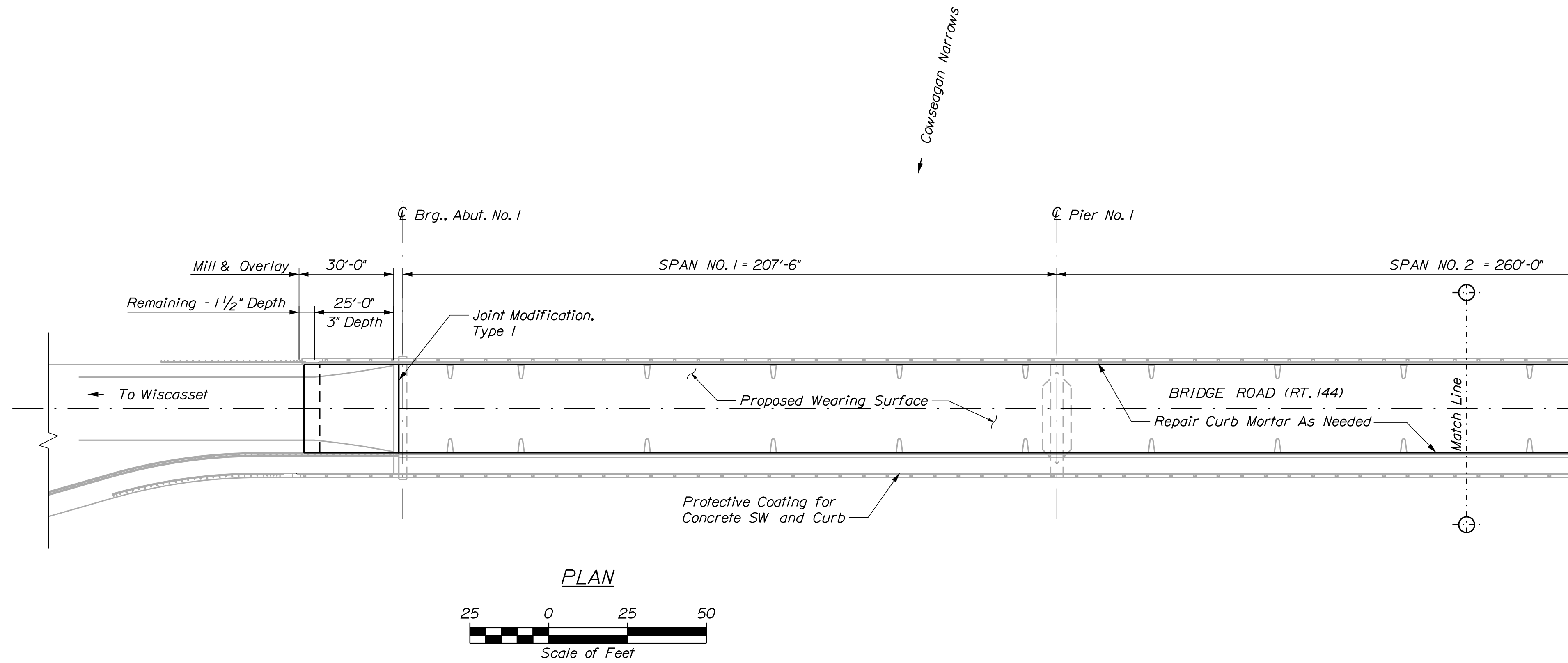
BY
CLJ
CAG

DATE
Aug 2024
Aug 2024

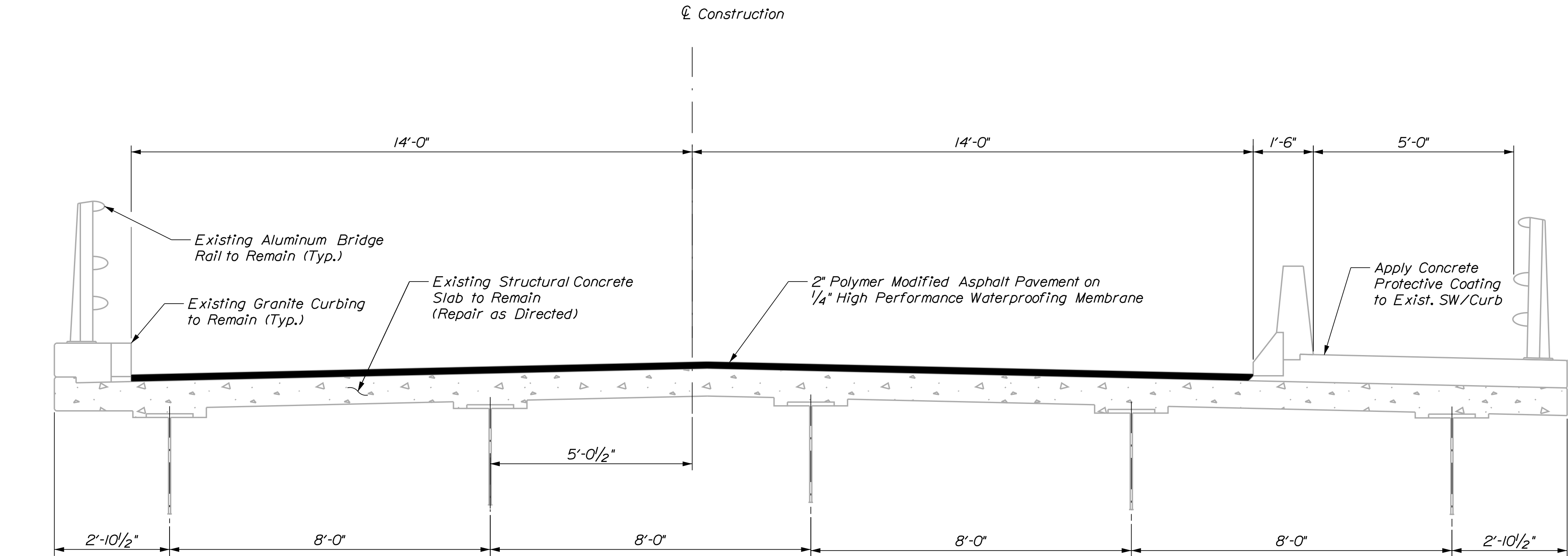
SIGNATURE

P.E. NUMBER

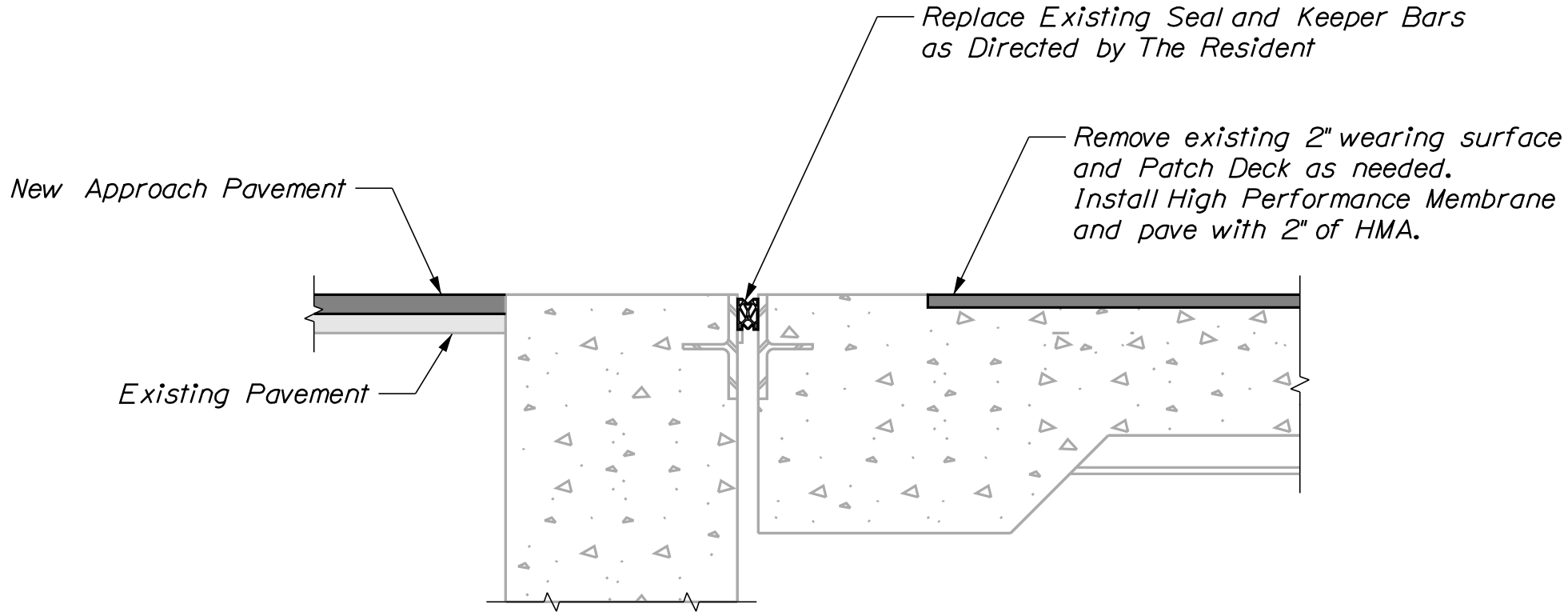
DATE



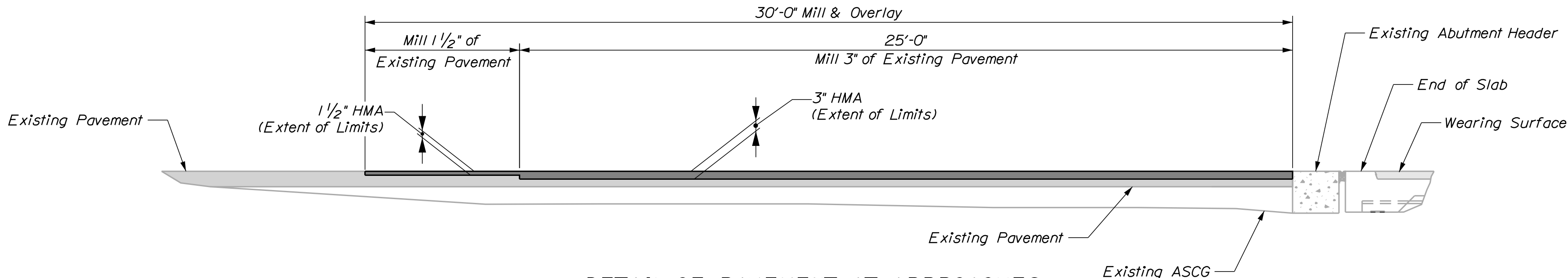
OF 7	3	SHEET NUMBER	Westport-Wiscasset Bridge COWSEAGAN NARROWS WISCASSET, WESTPORT ISLAND LINCOLN COUNTY					PROJ. MANAGER	GARY LIBBY	BY	DATE	STATE OF MAINE DEPARTMENT OF TRANSPORTATION 2726000		
			DESIGN-DETAILED	GAG	CLJ	AUG 2024								
			CHECKED-REVIEWED	DCE	GAG	AUG 2024								
			DESIGN2-DETAILED2			SIGNATURE								
			DESIGN3-DETAILED3			P.E. NUMBER								
			REVISIONS 1											
			REVISIONS 2											
			REVISIONS 3											
			REVISIONS 4			DATE								
			FIELD CHANGES											
BRIDGE NO. 3180												WIN	27260.00	BRIDGE PLANS



TYPICAL CROSS SECTION

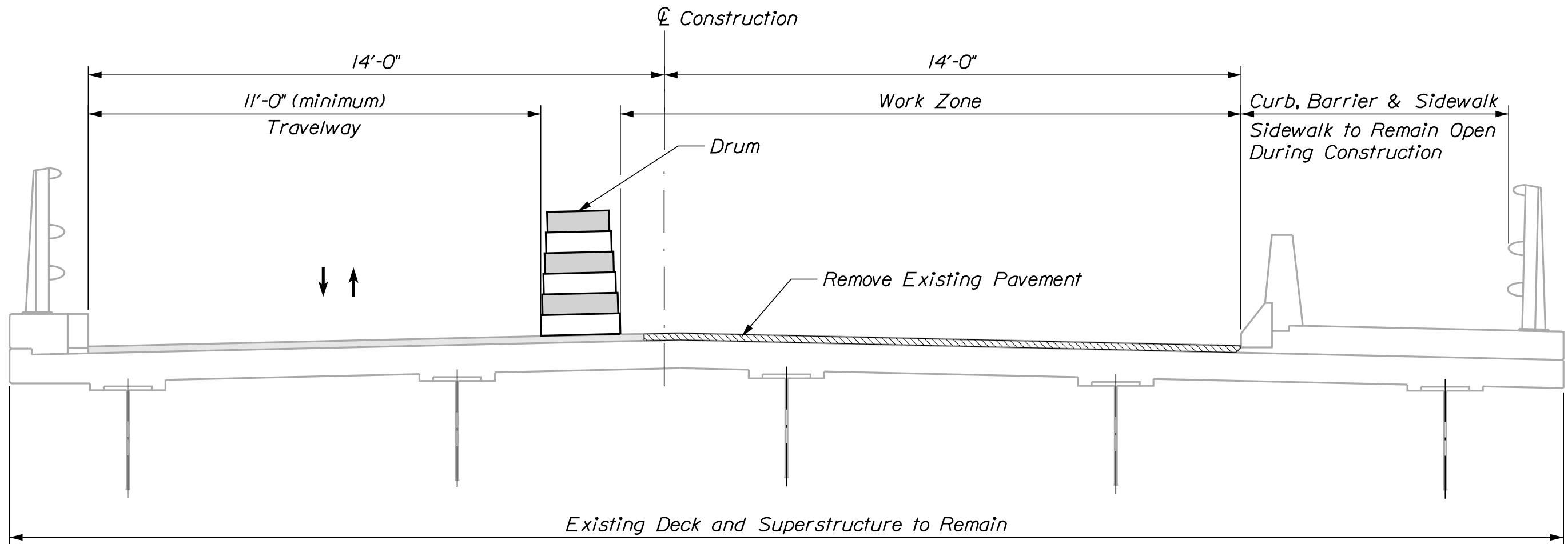


JOINT MODIFICATION, TYPE I (SEAL REPLACEMENT)



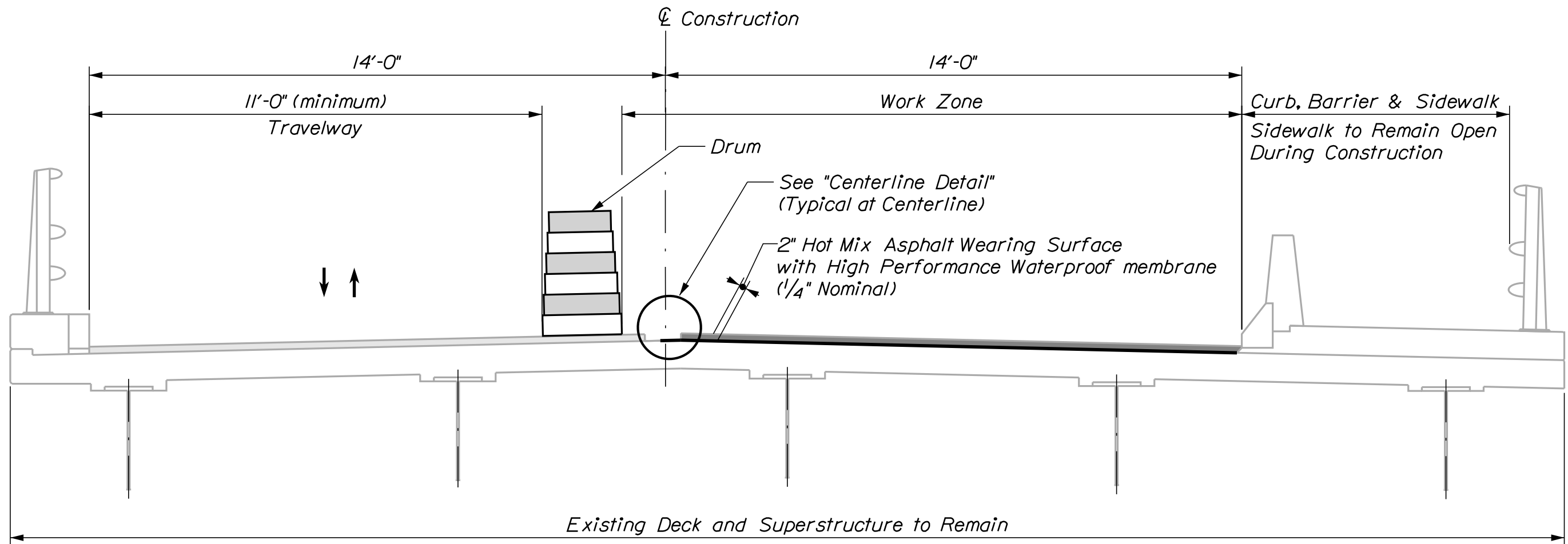
DETAIL OF PAVEMENT AT APPROACHES
(West shown; East - Similar)

Westport-Wiscasset Bridge COWSEAGAN NARROWS WISCASSET, WESTPORT ISLAND LINCOLN COUNTY				PROJ. MANAGER	GARY LIBBY	BY	DATE	STATE OF MAINE DEPARTMENT OF TRANSPORTATION	
TYPICAL SECTIONS and DETAILS				DESIGN-DETAILED	GAC	CLJ	AUG 2024		
				CHECKED-REVIEWED	DCE		GAC		AUG 2024
				DESIGN2-DETAILED2					
				DESIGN3-DETAILED3				SIGNATURE	
				REVISIONS 1				P.E. NUMBER	
				REVISIONS 2					
				REVISIONS 3					
				REVISIONS 4				DATE	
				FIELD CHANGES					
BRIDGE NO. 3180 WIN 27260.00									BRIDGE PLANS



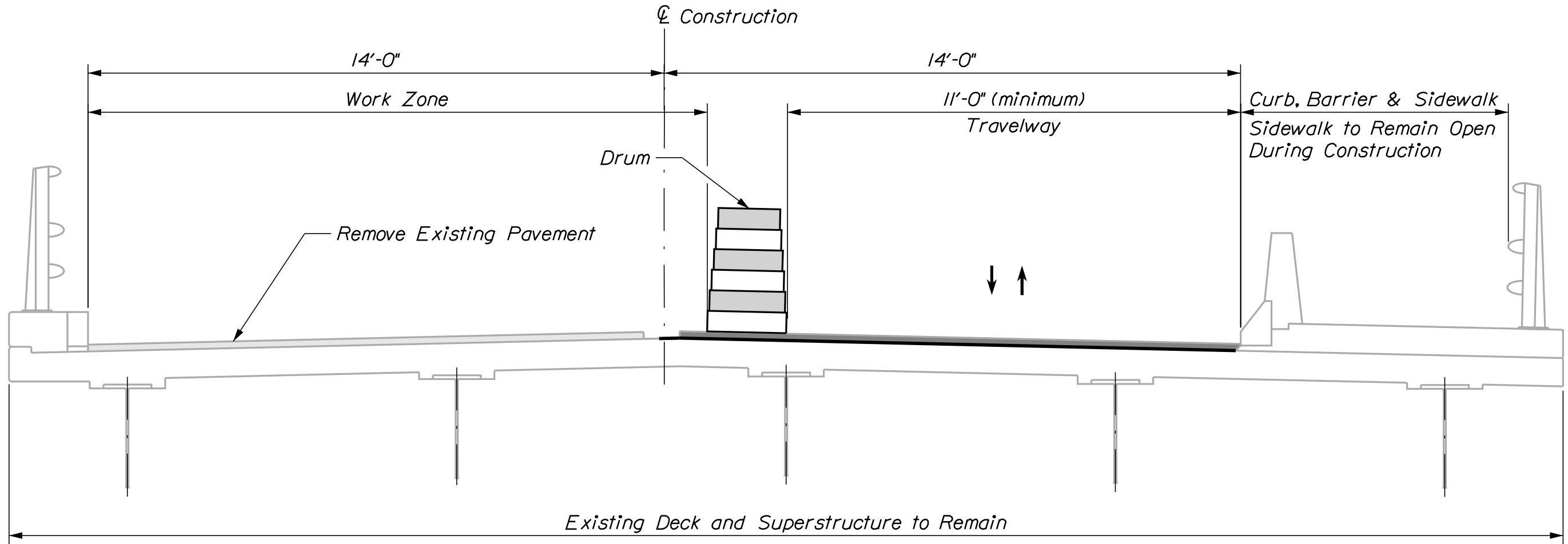
STAGE 1

Set Barriers to Establish Work Zone
Shift Traffic to One Lane of Alternating One-Way Traffic on North Side
Remove Existing Wearing Surface in the Work Zone



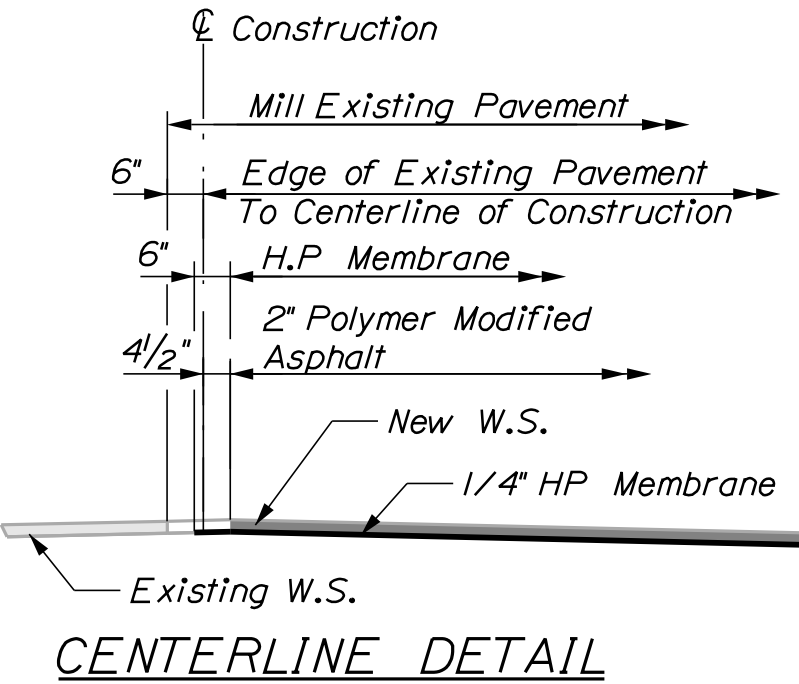
STAGE 2

Place Waterproof Membrane and 2" of Pavement in Work Area



STAGE 3

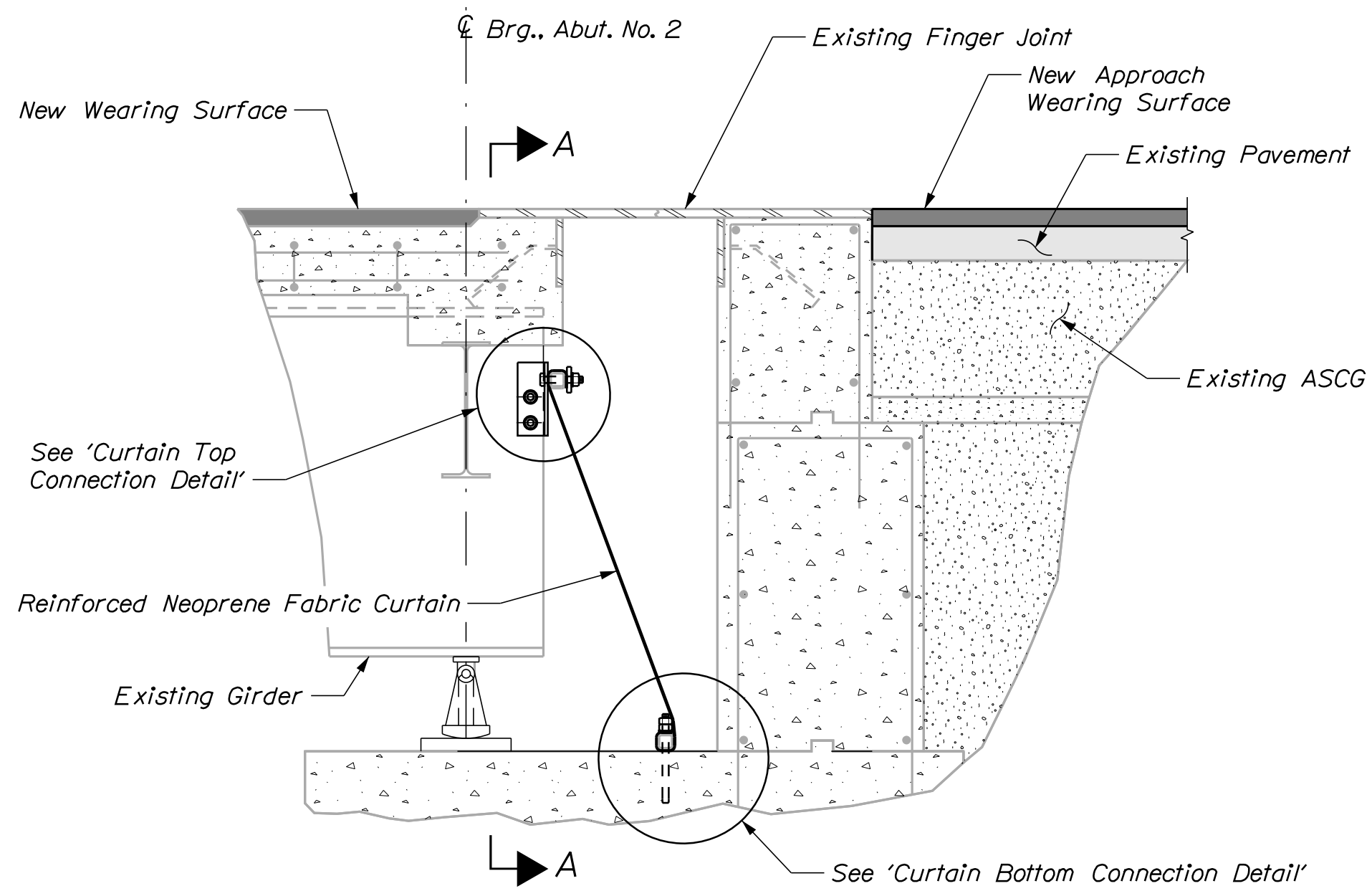
Shift Traffic to One Lane of Alternating One-Way Traffic on South Side
Remove existing Wearing Surface in the Work Zone



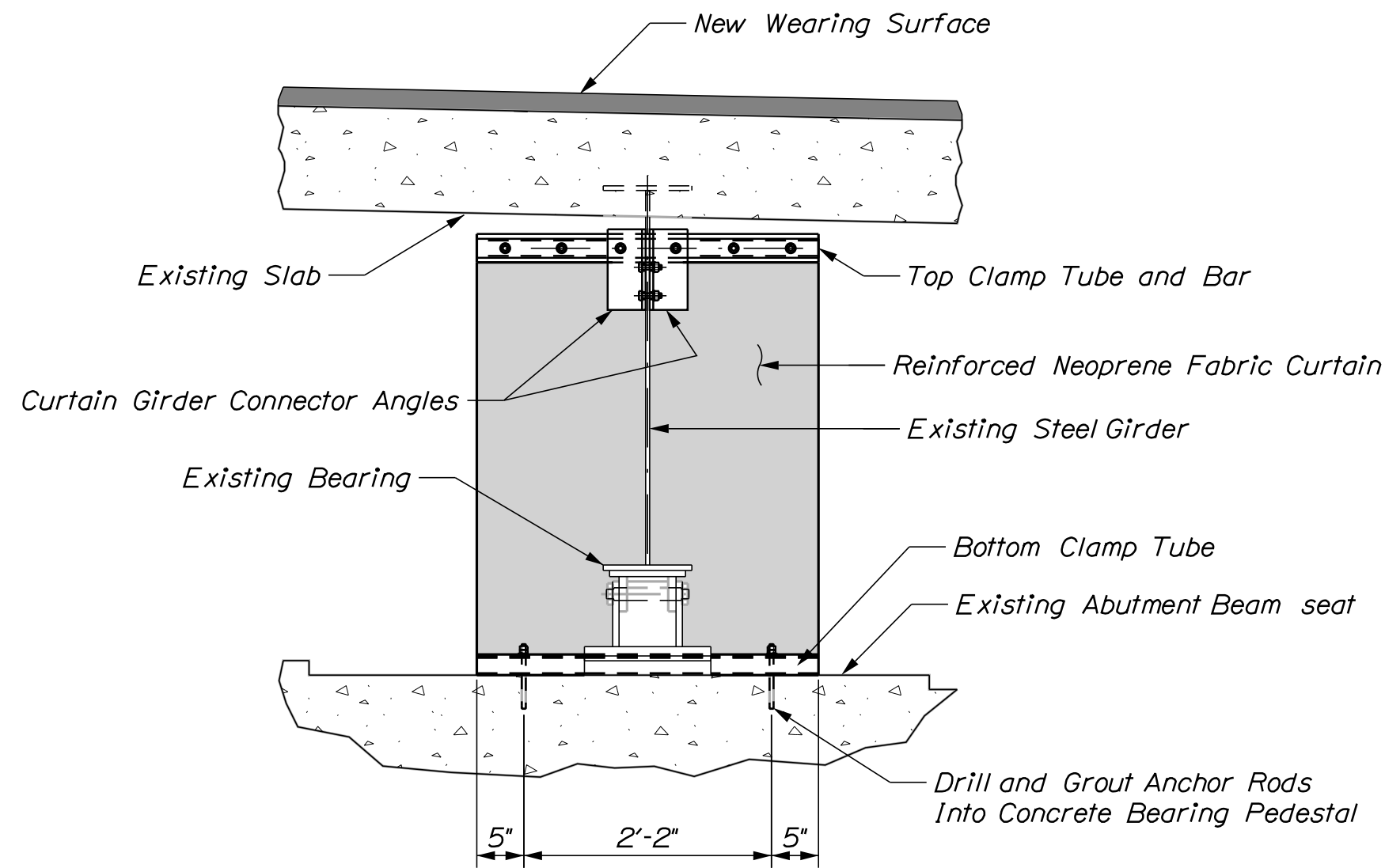
Westport-Wiscasset Bridge COWSEAGAN NARROWS WISCASSET, WESTPORT ISLAND LINCOLN COUNTY STAGING PLANS (1 of 2)	SHEET NUMBER				5		OF 7				
	PROJ. MANAGER	GARY LIBBY	BY	DATE	STATE OF MAINE DEPARTMENT OF TRANSPORTATION						
	DESIGN-DETAILED	GAC	CLJ	AUG 2024							
	CHECKED-REVIEWED	DCE	GAC	AUG 2024							
	DESIGN2-DETAILED2										
	DESIGN3-DETAILED3				SIGNATURE						
	REVISIONS 1				P.E. NUMBER						
	REVISIONS 2				DATE						
	REVISIONS 3										
	REVISIONS 4										
FIELD CHANGES				BRIDGE NO. 3180							
				WIN				27260.00		BRIDGE PLANS	
								27260000			



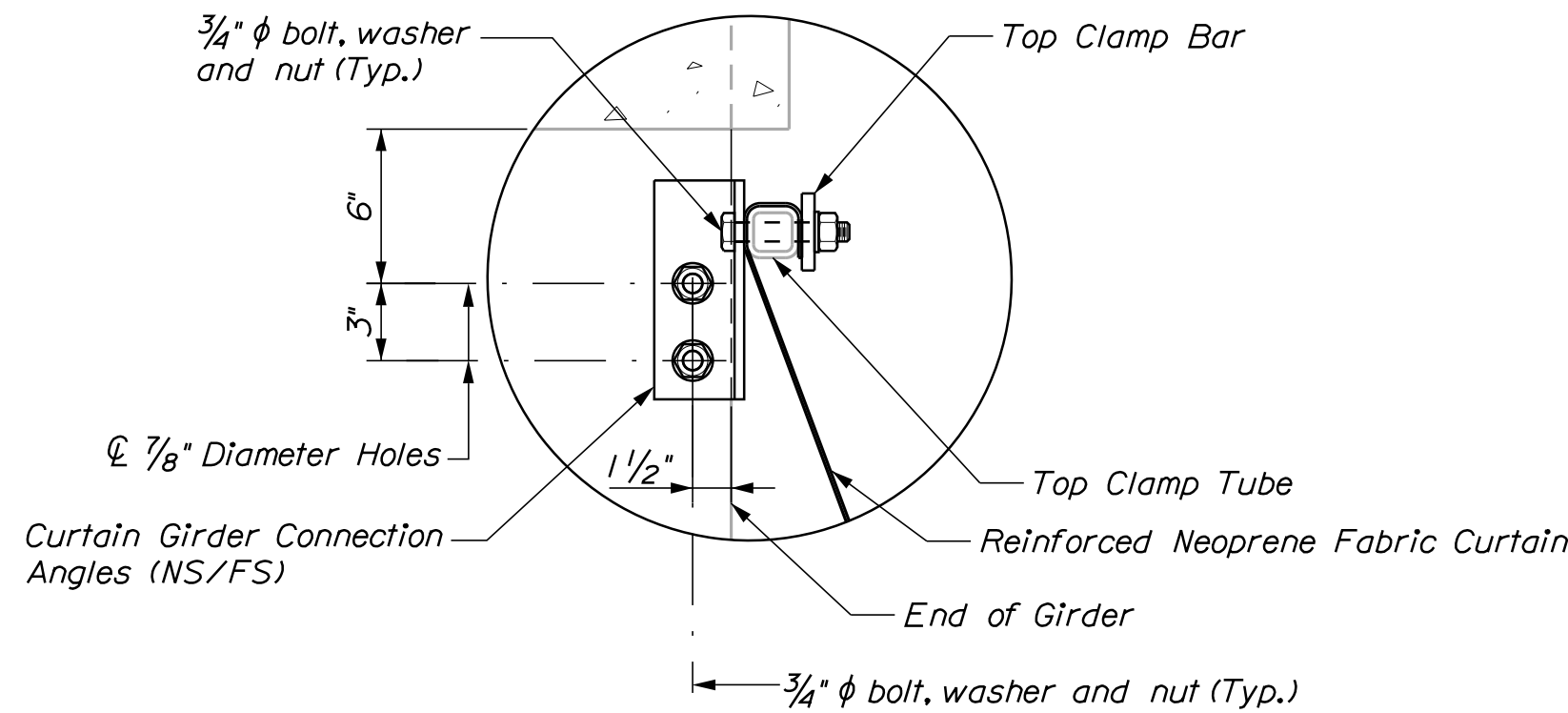
<div>6</div> <div>OF 7</div>	SHEET NUMBER	Westport - Wiscasset Bridge COWSEAGAN NARROWS WISCASSET, WESTPORT ISLAND LINCOLN COUNTY				PROJ. MANAGER	GARY LIBBY	BY	DATE	STATE OF MAINE DEPARTMENT OF TRANSPORTATION 2726000 WIN 27260.00 BRIDGE NO. 3180 BRIDGE PLANS
		DESIGN-DETAILED				CAC	C.L.J	AUG. 2024	SIGNATURE	
		CHECKED-REVIEWED				DCE	CAC	AUG. 2024		
		DESIGN2-DETAILED2								
		DESIGN3-DETAILED3						P.E. NUMBER		
		REVISIONS 1							DATE	
		REVISIONS 2								
		REVISIONS 3								
		REVISIONS 4								
		FIELD CHANGES								



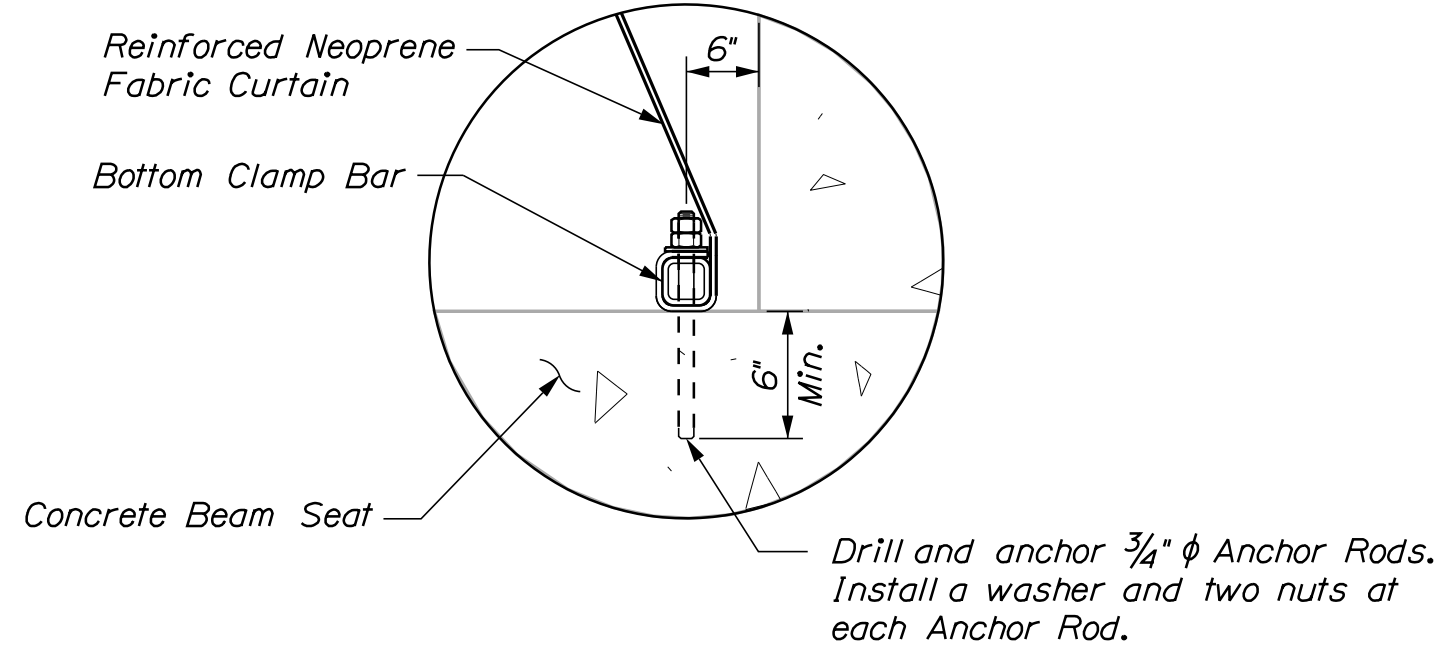
BEAM END CURTAIN
(Typ., 5 - Places)



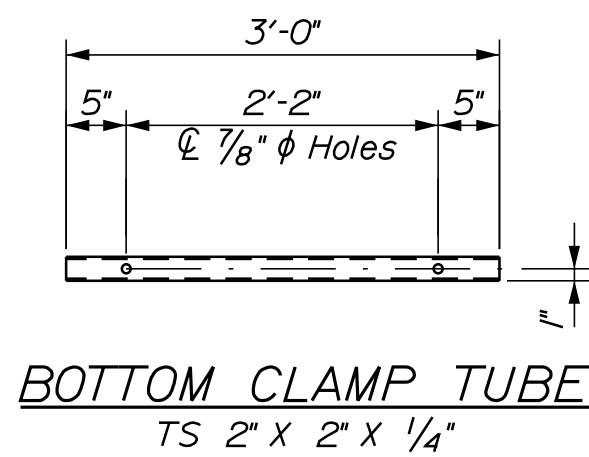
SECTION A - A
(Typical Elevation - Abutment Beam End)



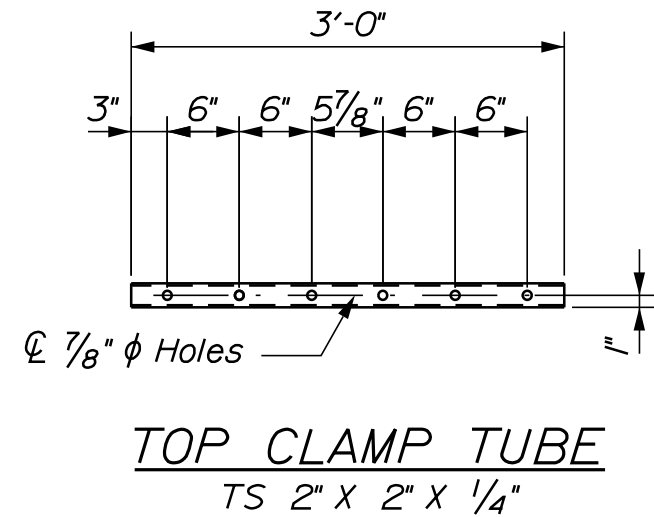
CURTAIN TOP CONNECTION DETAIL



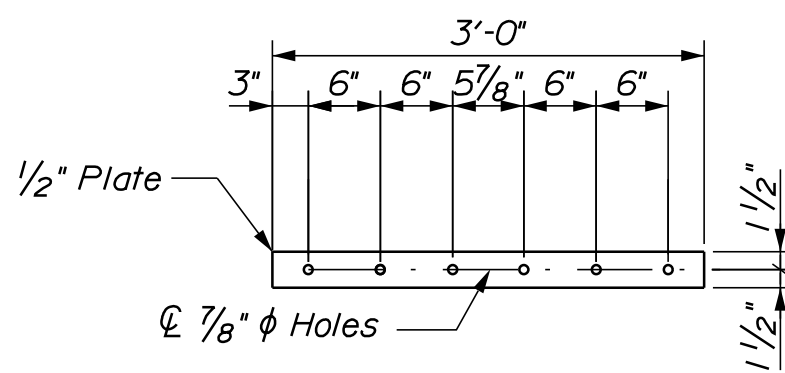
CURTAIN BOTTOM CONNECTION DETAIL



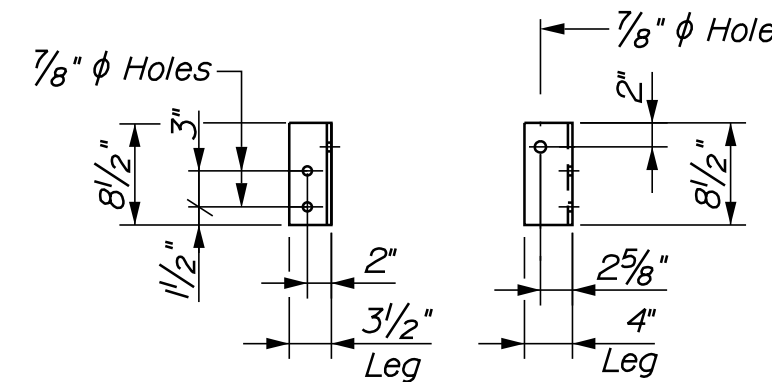
BOTTOM CLAMP TUBE
TS 2" X 2" X 1/4"



TOP CLAMP TUBE
TS 2" X 2" X 1/4"



TOP CLAMP BAR



CURTAIN GIRDER CONNECTOR ANGLES
L 4 x 3 1/2 x 3/8 ~ (5 - As Shown, 5 - Opposite Hand)

FABRIC CURTAIN FOR FINGER JOINT NOTES

1. All steel shall be ASTM A500 and be Galvanized in accordance with ASTM A123
2. All bolts shall be ASTM F3125, all nuts shall be ASTM A563, and all washers shall be ASTM F436. All Anchor Rods shall meet the requirements of ASTM F1554. All hardware and anchor rods shall be galvanized in accordance with ASTM A153.
3. For drilling and anchoring, the anchoring material shall be chosen from the MaineDOT Qualified Products List and shall be submitted to the Resident for approval.
4. Tighten nuts as directed by the Resident. Upset all threads after installation.

STATE OF MAINE DEPARTMENT OF TRANSPORTATION					BRIDGE NO. 3190 27260.00 BRIDGE PLANS
	2726000				
	WIN				
	27260.00				
Westport-Wiscasset Bridge COWSEAGAN NARROWS WISCASSET, WESTPORT ISLAND LINCOLN COUNTY CONSTRUCTION and CURTAIN STEEL DETAILS	PROJ. MANAGER	GARY LIBBY	BY	DATE	SIGNATURE P.E. NUMBER DATE
	DESIGN-DETAILED	CAC	GLJ	AUG. 2024	
	CHECKED-REVIEWED	DCE	GAC	AUG. 2024	
	DESIGN2-DETAILED2				
	DESIGN3-DETAILED3				
	REVISIONS 1				
	REVISIONS 2				
	REVISIONS 3				
	REVISIONS 4				
	FIELD CHANGES				
SHEET NUMBER					
7					
OF 7					