

STATE OF MAINE

DEPARTMENT OF TRANSPORTATION



TAUNTON & RAYNHAM ACADEMY GRANT

SOMERSET COUNTY

WEST OUTLET BRIDGE

OVER

WEST OUTLET KENNEBEC RIVER

ROUTES 6 & 15

FEDERAL AID PROJECT NO. 2707600

PROJECT LENGTH 0.038 mi.

BRIDGE NO. 3113

LIST OF DRAWINGS

Title Sheet.....	1
Estimated Quantities & General Construction Notes.....	2
General Plan.....	3
Typical Sections.....	4
Staged Construction Sections.....	5

UTILITIES

Central Maine Power
Consolidated Communications
Premium Choice Broadband

MAINTENANCE OF TRAFFIC

Maintain one 11'-0" wide lane of alternating traffic using traffic signals.

MATERIALS

Concrete:.....Class "A"

TRAFFIC DATA

Current (2024) AADT	1080
Future (2036) AADT	1140
DHV - % of AADT	13
Design Hour Volume	148
Heavy Trucks (% of AADT)	36
Heavy Trucks (% of DHV)	26
Directional Distribution (% of DHV)	60
18 kip Equivalent P 2.0	176
18 kip Equivalent P 2.5	168
Design Speed (mph)	45

PROJECT LOCATION	West Outlet Bridge (#3113) which carries State Routes 6 & 15 over West Outlet Kennebec River. Located 0.20 of a mile south of the Transfer Station Road. Lat./Long. 45°39'7.11" N 69°44'40.5" W
PROGRAM AREA	Highway Bridges-Traditional
OUTLINE OF WORK	Wearing Surface Replacement

WIN 27076.00

2707600

STATE OF MAINE
DEPARTMENT OF TRANSPORTATION

APPROVED

DATE

6-4-2024

COMMISSIONER:

CHIEF ENGINEER:

STATE OF MAINE
ENGINEER

SIGNATURE

15832

5/29/2024

DATE

5/29/2024

PROJECT INFORMATION

PROGRAM	Bridge Program
PROJECT MANAGER	Mark Parlin
DESIGNER	William Casey
CONSULTANT	N/A
PROJECT RESIDENT	
CONTRACTOR	
PROJECT COMPLETION DATE	

TAUNTON & RAYNHAM
WEST OUTLET BRIDGE

TITLE SHEET

SHEET NUMBER

1

OF 5

ESTIMATED QUANTITIES			
ITEM NO.	DESCRIPTION	QUANTITY	UNIT
202.127	REMOVE EXISTING BITUMINOUS PAVEMENT (5/10 SY)	1	LS
202.202	REMOVING PAVEMENT SURFACE	170	SY
403.208	HOT MIX ASPHALT 12.5 MM HMA SURFACE	57	T
403.213	HOT MIX ASPHALT 12.5 MM BASE	64	T
409.15	BITUMINOUS TACK COAT - APPLIED	48	G
502.701	BRIDGE DRAIN GRATE MODIFICATION	2	EA
508.14	HIGH PERFORMANCE WATERPROOFING MEMBRANE (5/9 SY)	1	LS
515.21	PROTECTIVE COATING FOR CONCRETE SURFACES (150 SY)	1	LS
518.50	REPAIR OF UPWARD FACING SURFACES - TO REINFORCING STEEL < 8 IN.	451	SF
518.51	REPAIR OF UPWARD FACING SURFACES - BELOW REINFORCING STEEL < 8 IN.	226	SF
526.301	PORTABLE CONCRETE BARRIER TYPE I (280 LF)	1	LS
527.34	WORK ZONE CRASH CUSHIONS	2	UN
627.18	12" SOLID WHITE PAVEMENT MARKING	30	LF
627.733	4" WHITE OR YELLOW PAINTED PAVEMENT MARKING LINE	600	LF
627.77	REMOVING PAVEMENT MARKINGS	450	SF
627.78	TEMPORARY 4 INCH PAINTED PAVEMENT MARKING LINE, WHITE OR YELLOW	1260	LF
629.05	HAND LABOR, STRAIGHT TIME	50	HR
631.172	TRUCK - LARGE (INCLUDING OPERATOR)	10	HR
639.19	FIELD OFFICE TYPE B	1	EA
643.72	TEMPORARY TRAFFIC SIGNAL	1	LS
652.312	TYPE III BARRICADE	4	EA
652.33	DRUM	25	EA
652.34	CONE	50	EA
652.35	CONSTRUCTION SIGNS	400	SF
652.361	MAINTENANCE OF TRAFFIC CONTROL DEVICES	1	LS
652.38	FLAGGER	240	HR
656.75	TEMPORARY SOIL EROSION AND WATER POLLUTION CONTROL	1	LS
659.10	MOBILIZATION	1	LS

GENERAL CONSTRUCTION NOTES

1. Protective Coating for Concrete Surfaces shall be applied to the following areas:

All exposed surfaces of concrete curbs,
Fascias down to the drip notch and
All exposed surfaces of Concrete Transition Barriers.

2. Project information referred to below may be accessed at the following MaineDOT web address: <http://www.maine.gov/mdot/contractors/>.

3. The existing bridge plans may be accessed at the MaineDOT web address. The plans are reproductions of the original drawings as prepared for the construction of the bridge. It is very unlikely that the plans will show any construction field changes or any alterations which may have been made to the bridge during its life span.

4. Quantities included for pay items measured and paid for by Lump Sum are estimated quantities and are provided by MaineDOT for informational purposes only. Lump Sum pay items will be paid for at the Contract Bid amount, with no addition or reduction in payment to the Contractor if the actual final quantities are different from the MaineDOT provided estimated quantities, except as follows:

a. If a Lump Sum pay item is eliminated, the requirements of Standard Specifications Section 109.2, Elimination of Items, will take precedence.

b. If other Contract Documents specifically allow a change in payment for a Lump Sum pay item, those requirements will be followed.

c. If a design change results in changes to estimated quantities for Lump Sum pay items, price adjustments will be made in accordance with Standard Specifications Section 109.7, Equitable Adjustments to Compensation.

STATE OF MAINE
DEPARTMENT OF TRANSPORTATION
2707600

WIN
27076.00

BRIDGE NO. 3113
BRIDGE PLANS

WEST OUTLET BRIDGE
WEST OUTLET KENNEBEC RIVER
TAUNTON & RAYNHAM SOMERSET COUNTY
ESTIMATED QUANTITIES &
GENERAL CONSTRUCTION NOTES

SHEET NUMBER
2
OF 5

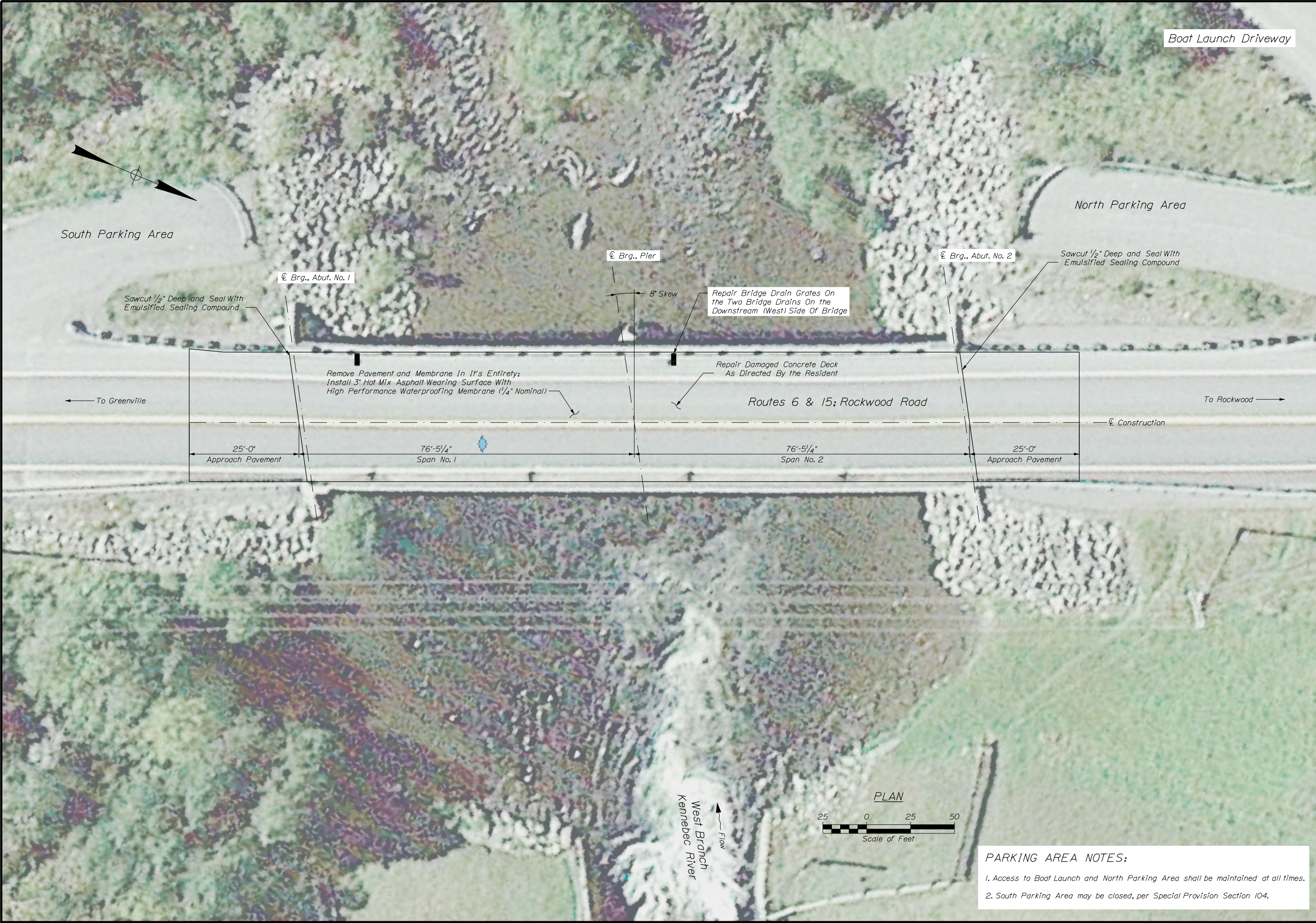
PROJ. MANAGER
DESIGN-DETAILED
CHECKED-REVIEWED
DESIGNS-DETAILED
DESIGNS-DETAILED
REVISIONS 1
REVISIONS 2
REVISIONS 3
REVISIONS 4
FIELD CHANGES

DATE
JUN 2024

BY
R. MAYER

M. PARLIN
W. CASEY

SIGNATURE
P.E. NUMBER
DATE



PARKING AREA NOTES:

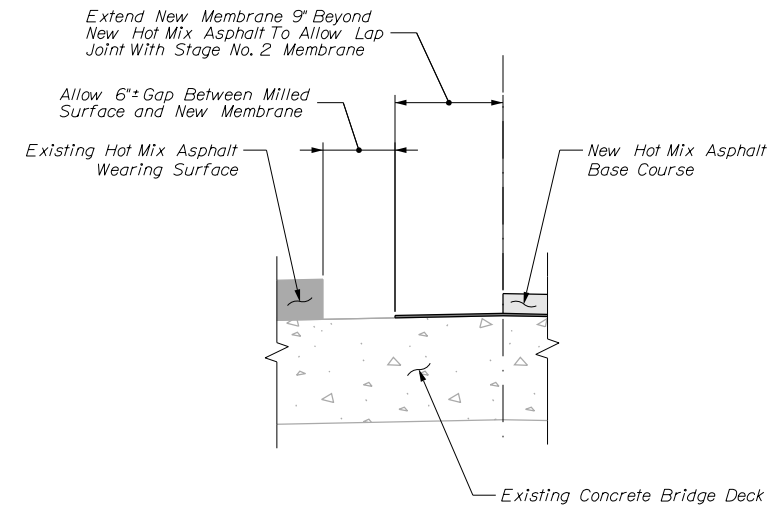
1. Access to Boat Launch and North Parking Area shall be maintained at all times.

2. South Parking Area may be closed, per Special Provision Section 104.

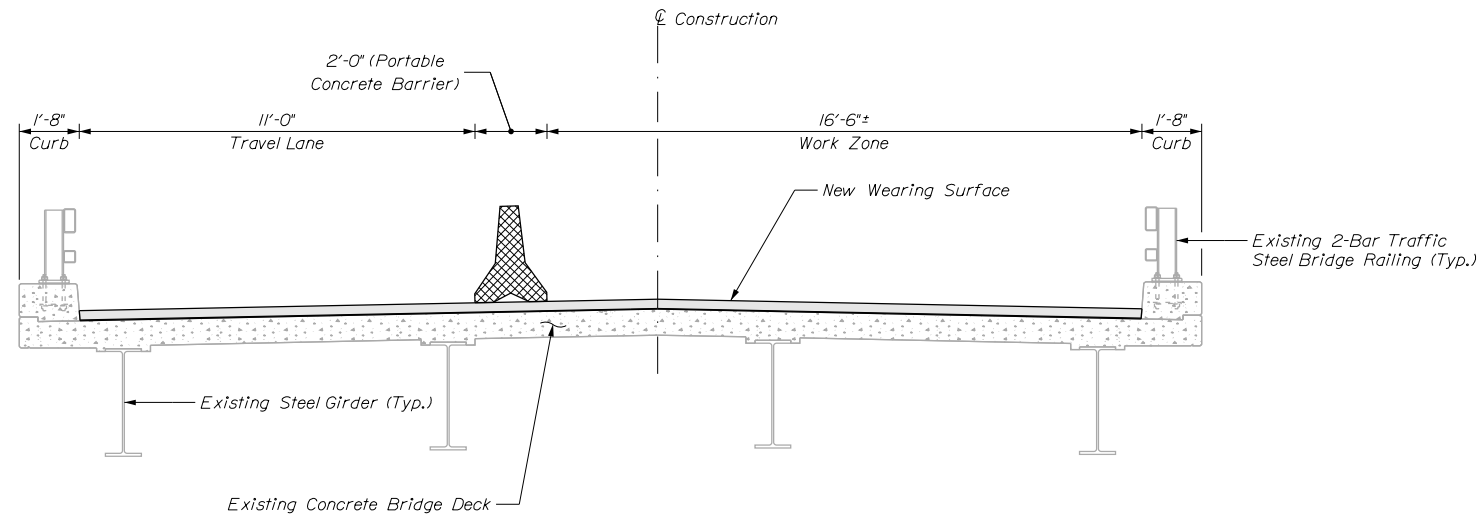
WEST OUTLET BRIDGE WEST OUTLET KENNEBEC RIVER TAUNTON & RAYNHAM SOMERSET COUNTY	STATE OF MAINE DEPARTMENT OF TRANSPORTATION			
	2707600			
	WIN 27076.00			
GENERAL PLAN	BRIDGE NO. 3113			
	BRIDGE PLANS			
SHEET NUMBER 3 OF 5	PROJ. MANAGER	M. PARLIN	BY R. MAYER	DATE JUN 2024
				SIGNATURE
				P.E. NUMBER
				DATE



1. Transverse sawcuts in the pavement at the end of the bridge shall be sealed with an emulsified asphalt sealing compound conforming to Specification 702.12. The sawcut and emulsified sealing shall not be paid for directly, but considered incidental to related Contract items.



PAVEMENT JOINT DETAIL



STAGE NO. 3

SHEET NUMBER 5	WEST OUTLET BRIDGE WEST OUTLET KENNEBEC RIVER TAUNTON & RAYNHAM SOMERSET COUNTY							PROJ. MANAGER	M. PARLIN	BY	DATE
								DESIGN-DETAILED	W. CASEY	R. MAYR	JUN 2024
								CHECKED-REVIEWED			
								DESIGN2-DETAILED2			
								DESIGN3-DETAILED3			
								REVISED 1			
OF 5	STAGED CONSTRUCTION SECTIONS							REVISED 2			
								REVISED 3			
								REVISED 4			
								FIELD CHANGES			
STATE OF MAINE DEPARTMENT OF TRANSPORTATION 2707600 WIN 27076.00											
BRIDGE NO. 3113 BRIDGE PLANS											