

STATE OF MAINE DEPARTMENT OF TRANSPORTATION



SPECIFICATIONS

Design: Load and Resistance Factor Design per AASHTO LRFD Bridge Design Specifications, Ninth Edition 2020.

DESIGN LOADING

Live Load HL - 93 Modified for Strength I

HYDROLOGIC DATA

Mean Lower Low Water (MLLW) -3.5 ft
 Mean Low Water (MLW) 0.0 ft
 Mean Tide Level (MTL) 4.5 ft
 Mean High Water (MHW) 9.0 ft
 Mean Higher High Water (MHHW) 13.0 ft

MATERIALS

Structural Steel:
 All Material (except as noted) ASTM A709, Grade 50W
 High Strength Bolts ASTM F3125, Grade A325, Type 3

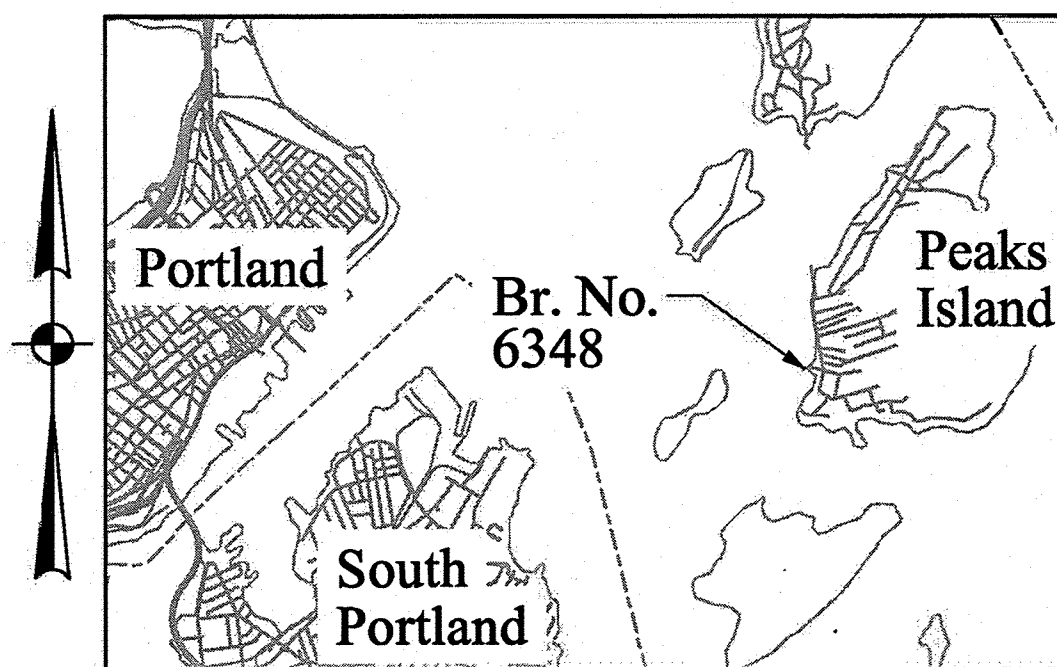
BASIC DESIGN STRESSES

Structural Steel:
 ASTM A709, Grade 50 $F_y = 50,000$ psi
 ASTM F3125, Grade A325 $F_u = 120,000$ psi

LIST OF DRAWINGS

Title Sheet	1
General Construction Notes	2
General Plan	3
Work Identification - Machinery Assembly	4
Work Identification - Machinery Assembly	5
Bridge Mechanical Repair and Counterweight Rope Details	6
Bridge Counterweight Guide - Demolition	7
Bridge Counterweight Guide - Machinery Assembly	8
Bridge Counterweight Guide - Part Details	9

CITY OF PORTLAND CUMBERLAND COUNTY FERRY SERVICE TRANSFER BRIDGE PEAKS ISLAND BRIDGE #6348 WIN 026920.00



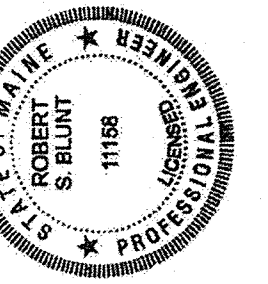
Location Map

MAINTENANCE OF TRAFFIC

30-Day Closure with alternate pedestrian access and occasional vehicle transfer, provided at Lionel Plante Associates Ferry Landing

PROJECT LOCATION	Peaks Island Transfer Bridge Portland, Maine Lat./Long. 43°39'19.5" N 70°11'58.4" W
PROGRAM AREA	Multimodal
OUTLINE OF WORK	Tower Painting and Various Mechanical Repairs

STATE OF MAINE DEPARTMENT OF TRANSPORTATION	APPROVED	DATE
COMMISSIONER: <i>[Signature]</i>	4-1-2026	4-1-2026
CHIEF ENGINEER: <i>[Signature]</i>		



SIGNATURE
 P.E. NUMBER
 DATE

PROJ. MANAGER	DESIGN-DETAILED	CHECKED-REVIEWED	DESIGN-REVIEWED	DESIGN-REVIEWED	DESIGN-REVIEWED	DESIGN-REVIEWED	DESIGN-REVIEWED	DESIGN-REVIEWED	DESIGN-REVIEWED	DATE
JOSEPH R. STILWELL, P.E.	TSR	TSR	TSR	TSR	TSR	TSR	TSR	TSR	TSR	3/17/2026
	JAP	JAP	JAP	JAP	JAP	JAP	JAP	JAP	JAP	3/17/2026
	REV1	REV2	REV3	REV4	REV5	REV6	REV7	REV8	REV9	

BRIDGE#6348 - PEAKS ISLAND
 CITY OF PORTLAND CUMBERLAND COUNTY
TITLE SHEET

SHEET NUMBER
1
 OF 9


Date: 3/30/2026
 Username: trifoux

GENERAL CONSTRUCTION NOTES:

1. The Contractor shall prepare a construction schedule for the overall project. This schedule shall be submitted for review and approval at least three months prior to starting any work on-site.
2. The details contained in this set are annotations of the available existing plans. These existing plan details are provided for reference to be used for the proposed improvements, and the accuracy of the plans is not guaranteed. All existing plan dimensions shall be verified by the Contractor and modified as necessary prior to submitting shop drawings.
3. Existing signs within the Project limits shall be removed and reset as directed by the Resident. Payment for removal and reinstallation of existing signs will be considered incidental to the Contract. No separate payment will be made.
4. Project information referred to below may be accessed at the following MaineDOT web address: <http://www.maine.gov/mdot/contractors/>
5. The existing bridge plans may be accessed at the MaineDOT web address. The plans are reproductions of the original drawings as prepared for the construction of the bridge. It is very unlikely that the plans will show any construction field changes or any alterations which may have been made to the bridge during its life span.
6. Quantities included for pay items measured and paid for by Lump Sum are estimated quantities and are provided by MaineDOT for informational purposes only. Lump Sum pay items will be paid for at the Contract Bid amount, with no addition or reduction in payment to the Contractor if the actual final quantities are different from the MaineDOT provided estimated quantities, except as follows:
 - a. If a Lump Sum pay item is eliminated, the requirements of Standard Specifications Section 109.2, Elimination of Items, will take precedence.
 - b. If other Contract Documents specifically allow a change in payment for a Lump Sum pay item, those requirements will be followed.
 - c. If a design change results in changes to estimated quantities for Lump Sum pay items, price adjustments will be made in accordance with Standard Specifications Section 109.7, Equitable Adjustments to Compensation and Time.
7. The existing bridge components shall be removed by and become the property of the Contractor. The Contractor is responsible for the containment, proper management and disposal of all hazardous waste generated by project. The Contractor is responsible for implementing appropriate OSHA mandated personal protection standards related to this process. Once the existing bridge components have been removed, the Contractor is solely responsible for the care, custody, and control of the components of the existing bridge and any hazardous waste generated as a result of the storage, recycling, or disposal of the bridge components. The Contractor shall recycle or reuse the steel in accordance with the Maine Department of Environmental Protection's "Maine Hazardous Waste Management Regulations," Chapter 850. A copy of this regulation is available at MaineDOT's offices on Child Street in Augusta. Payment for all labor, materials, equipment, and other costs required to remove and dispose of the existing bridge will be considered incidental to the project.

ESTIMATED QUANTITIES			
ITEM NO.	DESCRIPTION	QUANTITY	UNIT
504.811	Structural Steel Repair	3000 lbs	1 LS
506.144	Field Painting of Existing and New Structural Steel	72000 lbs	1 LS
506.17	Surface Preparation of Existing Structural Steel	72000 lbs	1 LS
506.18	Containment and Pollution Control	1	LS
506.191	Disposal of Special Waste of Hazardous Waste	1	LS
629.05	Hand Labor, Straight Time	10	HRS
639.20	Field Office Type C	1	EA
652.312	Type III Barricades	2	EA
652.35	Construction Signs	128	SF
652.55	Temporary Sound Wall	1	LS
656.75	Temporary Soil Erosion and Water Pollution Control	1	LS
659.10	Mobilization	1	LS
860.1870	Miscellaneous Mechanical Repairs	1	LS



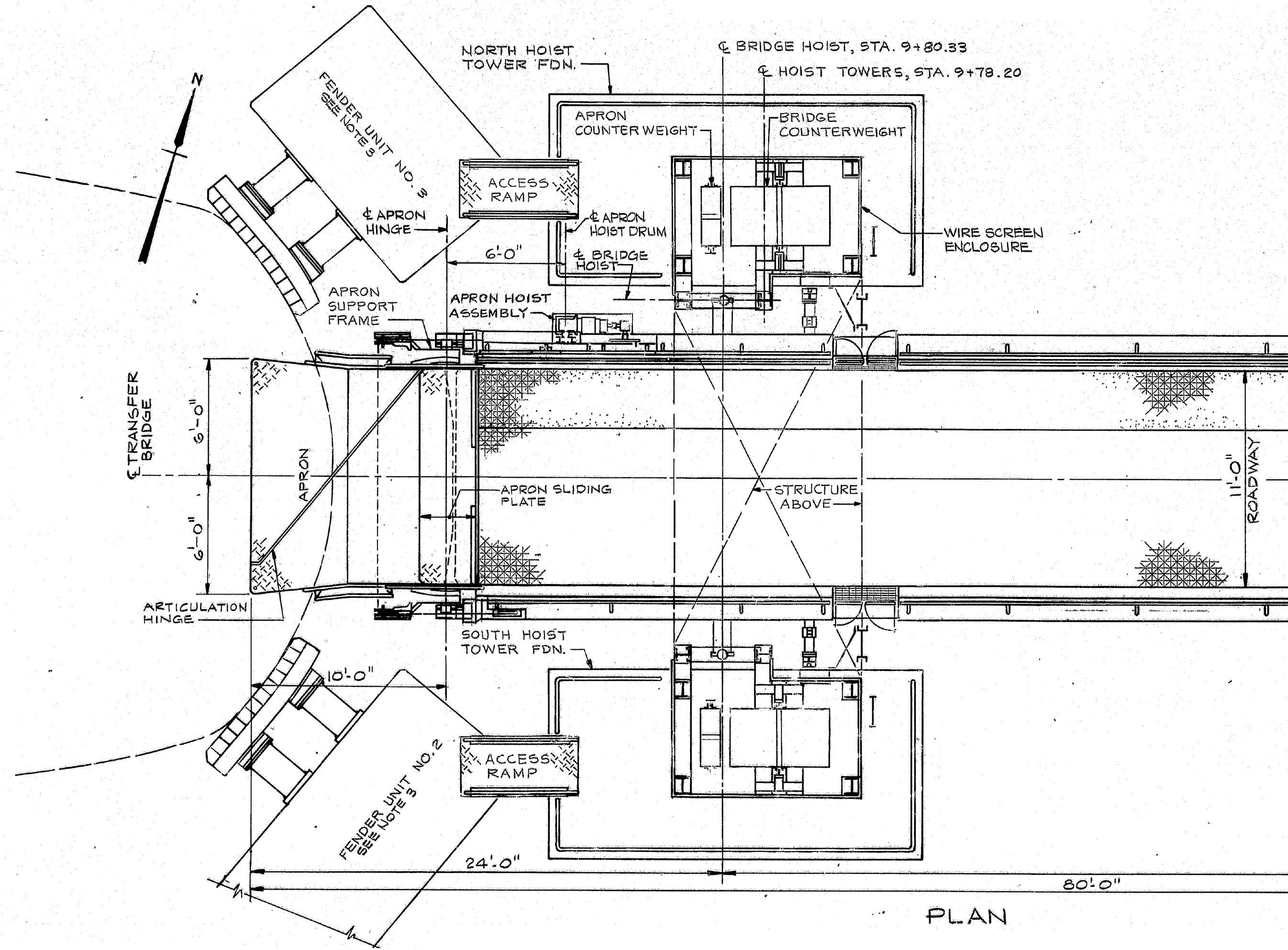

 SIGNATURE
 11158
 P.E. NUMBER
 MARCH 2026
 DATE

DATE	3/17/2026
BY	RSBLUNT
JOSEPH R. STILWELL, P.E.	
PROJ. MANAGER	
DESIGN-DETAILED	TSR
CHECKED-REVIEWED	JAP
DESIGN-DETAILED02	
DESIGN-DETAILED03	
REVISIONS 1	
REVISIONS 2	
REVISIONS 3	
REVISIONS 4	
FIELD CHANGES	

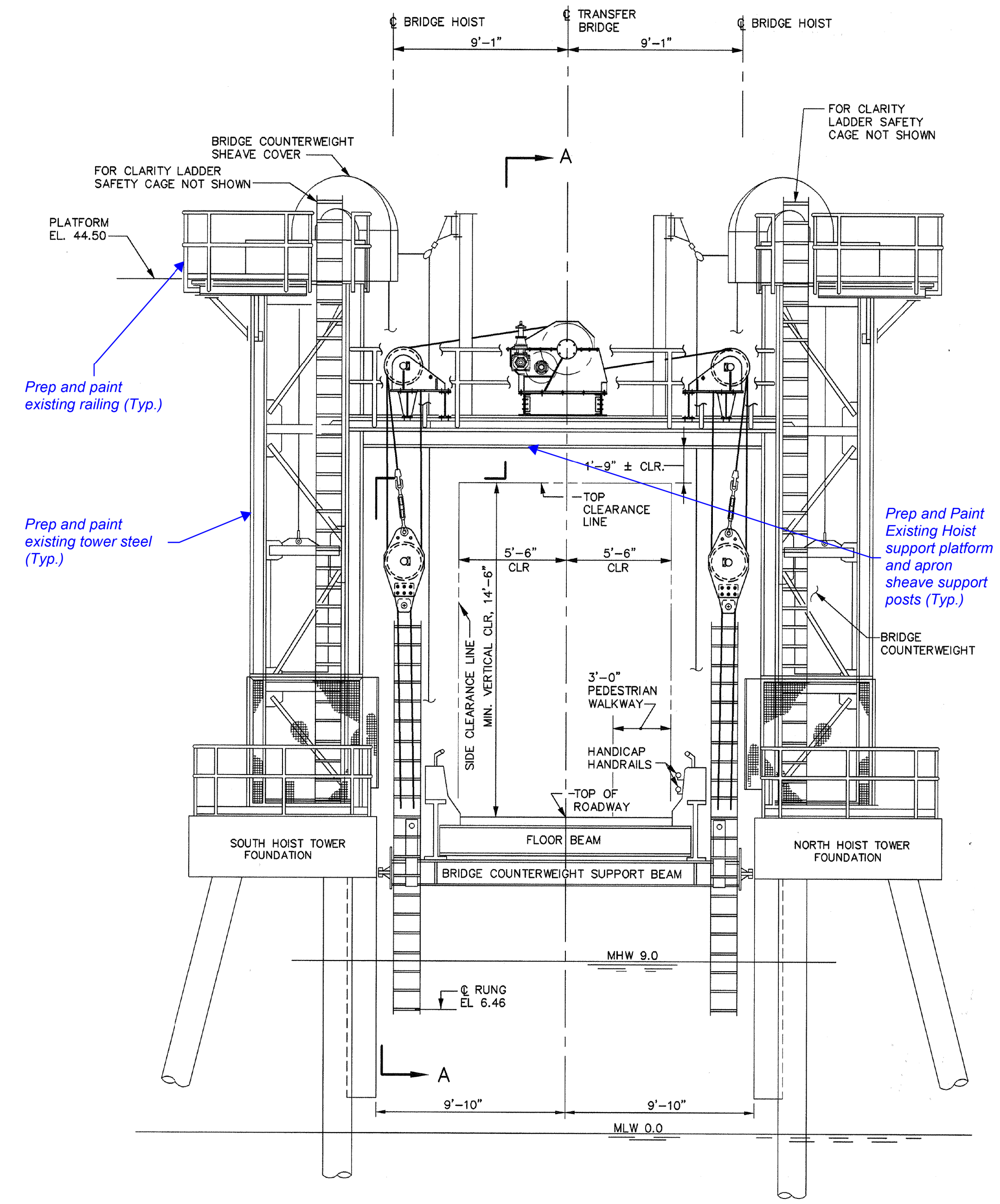
BRIDGE#6348 - PEAKS ISLAND
 CITY OF PORTLAND CUMBERLAND COUNTY
 GENERAL CONSTRUCTION NOTES

SHEET NUMBER
2
 OF 9

STATE OF MAINE
 DEPARTMENT OF TRANSPORTATION
 2692000
 WIN
 BRIDGE NO. 6348 026920.00
 BRIDGE PLANS

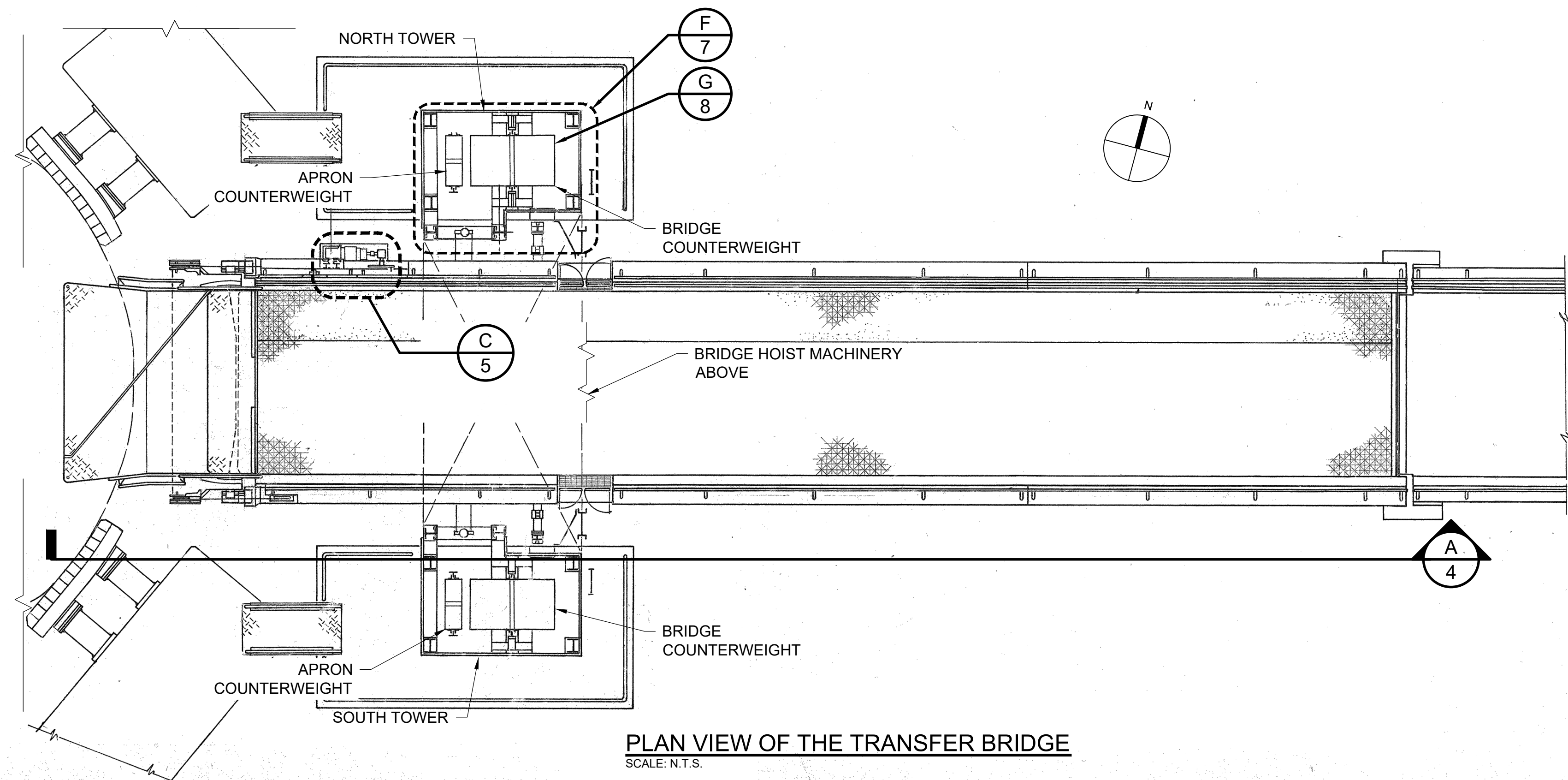


PLAN

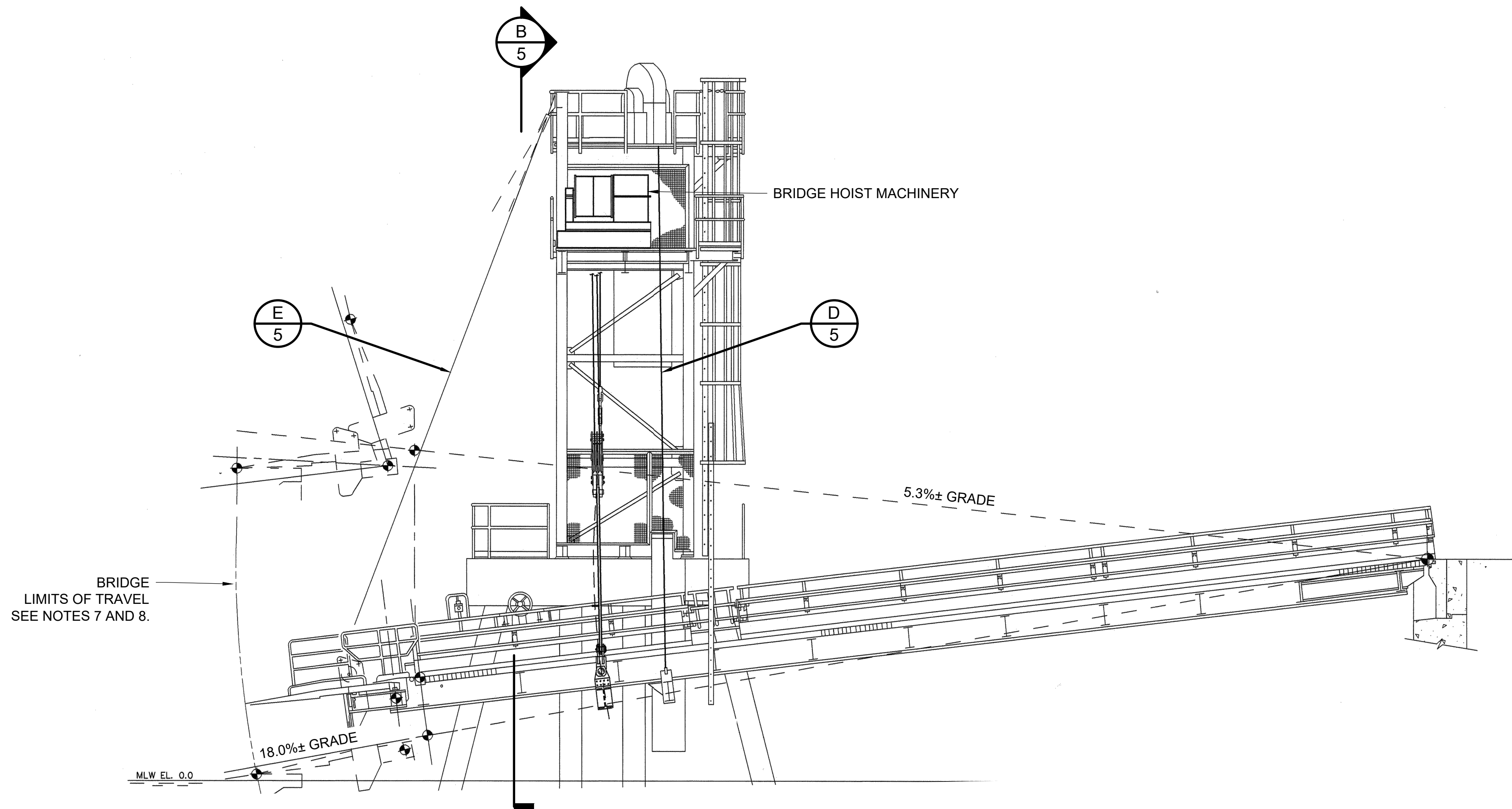


TRANSVERSE SECTIONAL ELEVATION
(LOOKING OUTBOARD)
NOT TO SCALE

STATE OF MAINE DEPARTMENT OF TRANSPORTATION		2692000		WIN		026920.00		BRIDGE NO. 6348		BRIDGE PLANS	
		SIGNATURE		DATE		P.E. NUMBER		DATE		FIELD CHANGES	
		11/15/2026		3/17/2026		11158		MARCH 2026			
PROJECT: BRIDGE#6348 - PEAKS ISLAND CITY OF PORTLAND CUMBERLAND COUNTY GENERAL PLAN		PROJECT MANAGER: JOSEPH E. STILWELL, P.E. DESIGN-DETAILED: TSR CHECKED-REVIEWED: JAP DESIGN-DETAILED: JRS DESIGN-DETAILED: JRS REVISIONS 1 REVISIONS 2 REVISIONS 3 REVISIONS 4 FIELD CHANGES		BY: JRS DATE: 3/17/2026		DATE: 3/17/2026		DATE: 3/17/2026		DATE: 3/17/2026	
SHEET NUMBER		3		OF		9					



PLAN VIEW OF THE TRANSFER BRIDGE
SCALE: N.T.S.



A ELEVATION VIEW
SCALE: N.T.S.

WORK SCHEDULE				
MARK NO.	QTY. REQ'D	COMPONENT	DESCRIPTION	REFERENCE SHEETS
MK1	1	APRON HOIST MOTOR BRAKE	REPLACE BRAKE DISCS AND ADJUST BRAKE TORQUE TO RESTORE BRAKE CAPACITY. (SEE SPECIAL PROVISIONS FOR DETAILS)	4, 5
MK2	1	APRON HOIST OPERATOR COUPLING	PROVIDE NEW QUICK RELEASE PIN (MCMASTER-CARR PART NO. 98404A520) FURNISH AND STORE PIN AT BRIDGE FOR MANUAL OPERATOR COUPLING	4, 5
MK3	2	BRIDGE COUNTERWEIGHT GUIDES	REPLACE BRIDGE COUNTERWEIGHT GUIDES AND GUIDE RAILS	4, 7, 8, & 9
MK4A	2	APRON COUNTERWEIGHT SHEAVE	REPLACE SHEAVE ASSEMBLIES CONNECTED TO APRON COUNTERWEIGHTS	4, 5
MK4B	2	APRON SNATCH BLOCK ASSEMBLY	REPLACE APRON COUNTERWEIGHT ROPE SNATCH BLOCKS AND SWIVELS	4, 5
MK4C	2	APRON COUNTERWEIGHT ROPE ASSEMBLY	REPLACE 1/2" DIA. APRON COUNTERWEIGHT ROPE ASSEMBLIES	4, 5, & 6
MK5A	2	BRIDGE COUNTERWEIGHT ROPE ASSEMBLY	REPLACE 1 5/8" DIA. BRIDGE COUNTERWEIGHT ROPE ASSEMBLIES	4, 5, & 6
MK5B	1	BRIDGE COUNTERWEIGHT ADJUST COUNTERBALANCE MATERIAL	ADJUST COUNTERWEIGHT BALLAST TO EQUALIZE ROPE TENSIONS. SEE SPECIAL PROVISIONS FOR ADDITIONAL DETAILS.	4, 5
MK6	1	APRON HOIST OPERATING ROPE	REPLACE 1/2" DIA. APRON HOIST ROPE ASSEMBLY	4, 5, 6
MK7A	2	BRIDGE HOIST OPERATING ROPE	REPLACE 1" DIA. BRIDGE HOIST OPERATING ROPE ASSEMBLIES	4, 5, 6
MK7B	2	BRIDGE HOIST OPERATING ROPE JAW AND EYE SUPABUCKLE WITH JAW END PIN	REPLACE 1 1/2 X 12 JAW & EYE SUPABUCKLE WITH JAW END PIN	4, 5, 6
MK7C	2	BRIDGE HOIST SUPABUCKLE LOWER PIN	REPLACE EXISTING 2" DIA. PIN	4, 5, 6

GENERAL NOTES:

- ALL WORK SHALL BE DONE IN ACCORDANCE WITH THE AASHTO LRFD MOVABLE HIGHWAY BRIDGE DESIGN SPECIFICATIONS, 2023.
- ALL DIMENSIONS ARE IN INCHES UNLESS NOTED OTHERWISE.
- SEE SPECIAL PROVISIONS FOR ADDITIONAL DETAILS, INFORMATION, AND REQUIREMENTS RELATED TO THE WORK INDICATED ON THESE CONTRACT PLANS.
- THE DIMENSIONS SHOWN ON THESE DRAWINGS ARE NOMINAL. THE CONTRACTOR MUST SHOW ALL DIMENSIONS WITH THE APPROPRIATE TOLERANCES TO OBTAIN REQUIRED FITS AND ALIGNMENT BETWEEN MATING PARTS ON THE SHOP DRAWINGS.
- ALL HARDWARE INCIDENTAL TO EACH MARK NUMBER SHALL BE FURNISHED AND INSTALLED UNDER THAT ITEM.
- ALL ITEMS CALLED OUT AS REPLACE INCLUDES REMOVING AND DISPOSAL OF EXISTING COMPONENTS AND PROVIDING NEW ITEMS.
- DOCUMENT EXISTING LIMITS OF TRAVEL OF BRIDGE, APRON, AND COUNTERWEIGHTS. SUBMIT FOR REVIEW.
- DOCUMENT LIMITS OF TRAVEL OF BRIDGE, APRON, AND COUNTERWEIGHTS FOLLOWING COMPLETION OF ALL WORK. SUBMIT FOR REVIEW.
- THE MACHINERY SYSTEMS PROVIDED UNDER THIS CONTRACT SHALL BE INSTALLED TO ACHIEVE SMOOTH AND CONTROLLED BRIDGE MOVEMENT WITH NO UNUSUAL NOISE, VIBRATION OR IMPACT TO THE SATISFACTION OF THE ENGINEER AND OWNER. ANY ADJUSTMENTS NECESSARY TO SATISFY THIS REQUIREMENT SHALL BE MADE AT NO COST TO THE OWNER.

STATE OF MAINE
DEPARTMENT OF TRANSPORTATION

BRIDGE #6348 - PEAKS ISLAND
PORTLAND ME CUMBERLAND COUNTY

WORK IDENTIFICATION

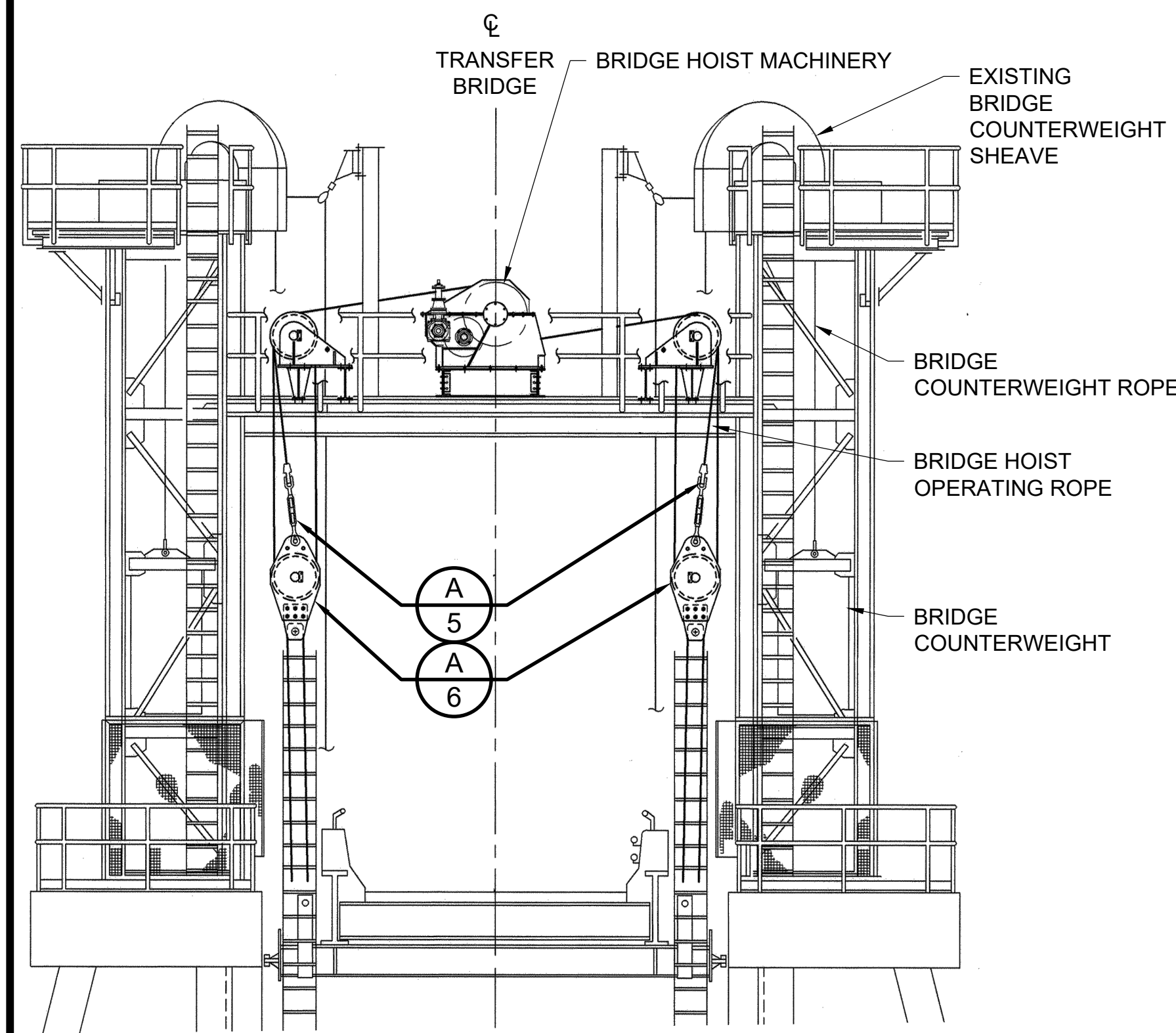
02692000
WIN 026920.00
BRIDGE NO. 6348
BRIDGE PLANS

PROFESSIONAL ENGINEER
LUS BURGOIS
No. 18186
P.E. NUMBER
FEBRUARY 19, 2026
DATE

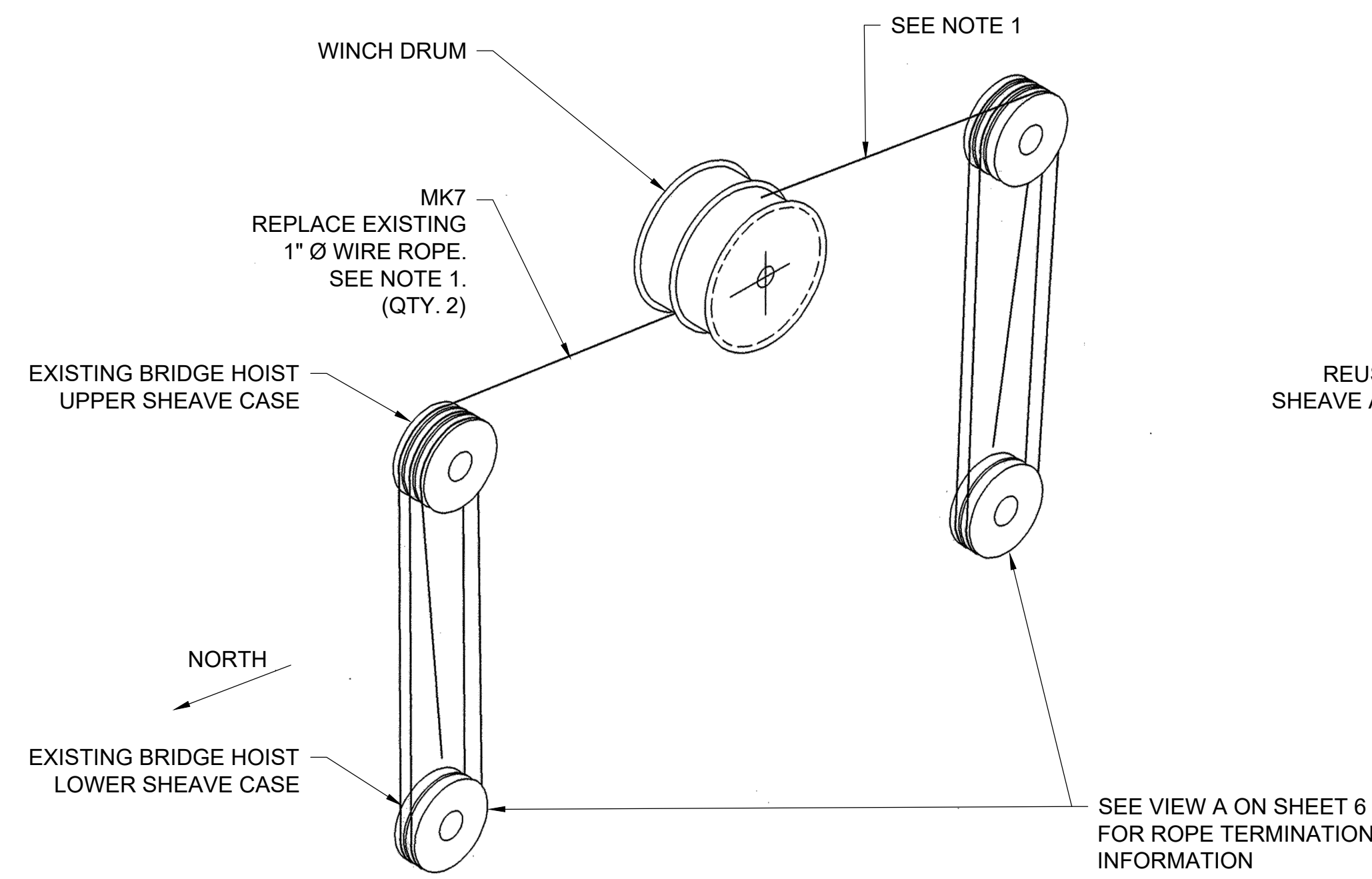
SIGNATURE
DATE
BY
LAB
REG
PROJ. MANAGER
DESIGN-DETAILED
CHECKED-REVIEWED
DESIGN-DETAILED
DESIGN-DETAILED
REVISIONS 1
REVISIONS 2
REVISIONS 3
REVISIONS 4
FIELD CHANGES

SHEET NUMBER
4
OF 9

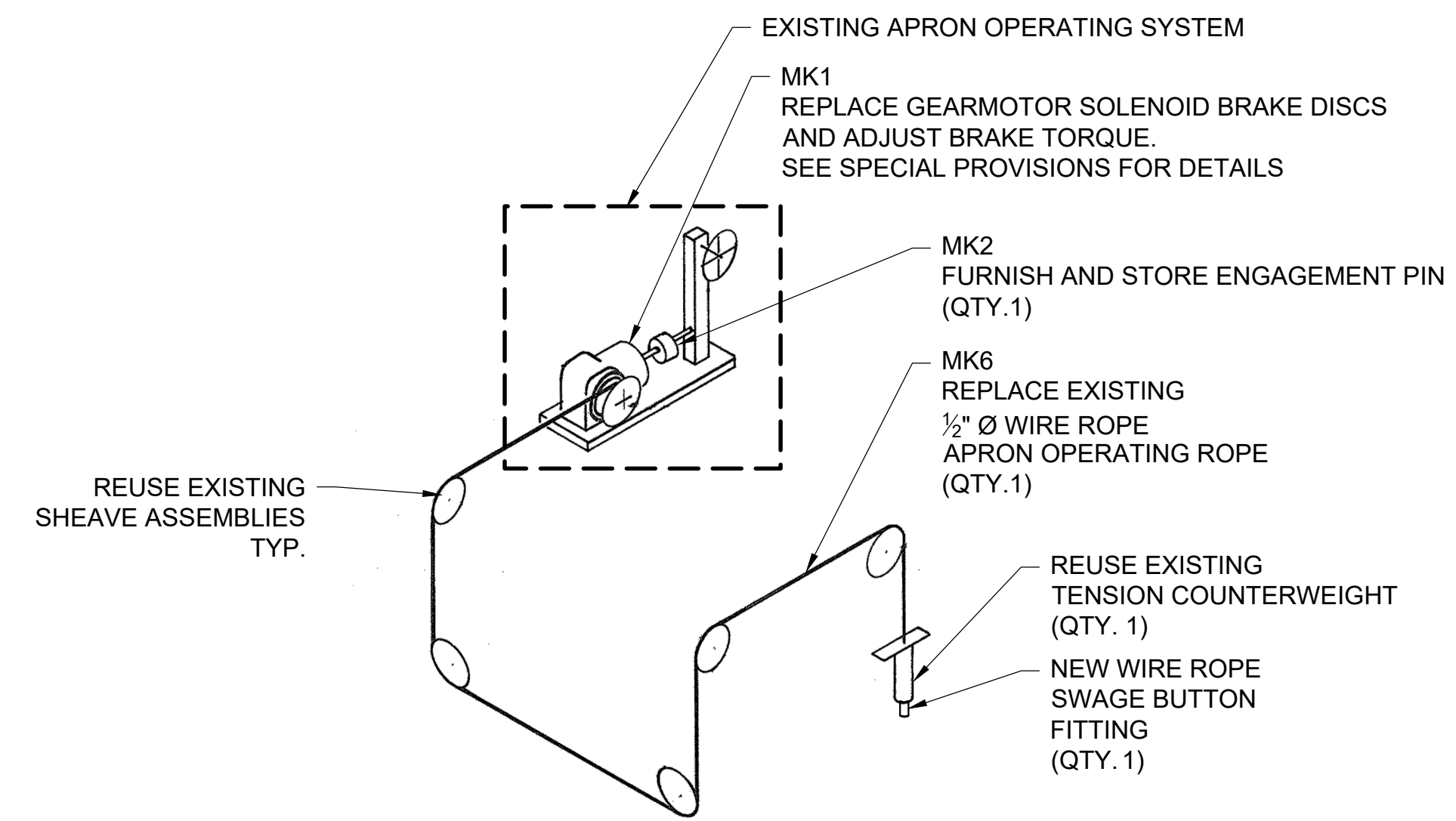
WJE
Wiss, Janney, Elstner Associates, Inc.
800 Hyde Park
Doylestown, Pennsylvania 18902
215.340.5830 tel



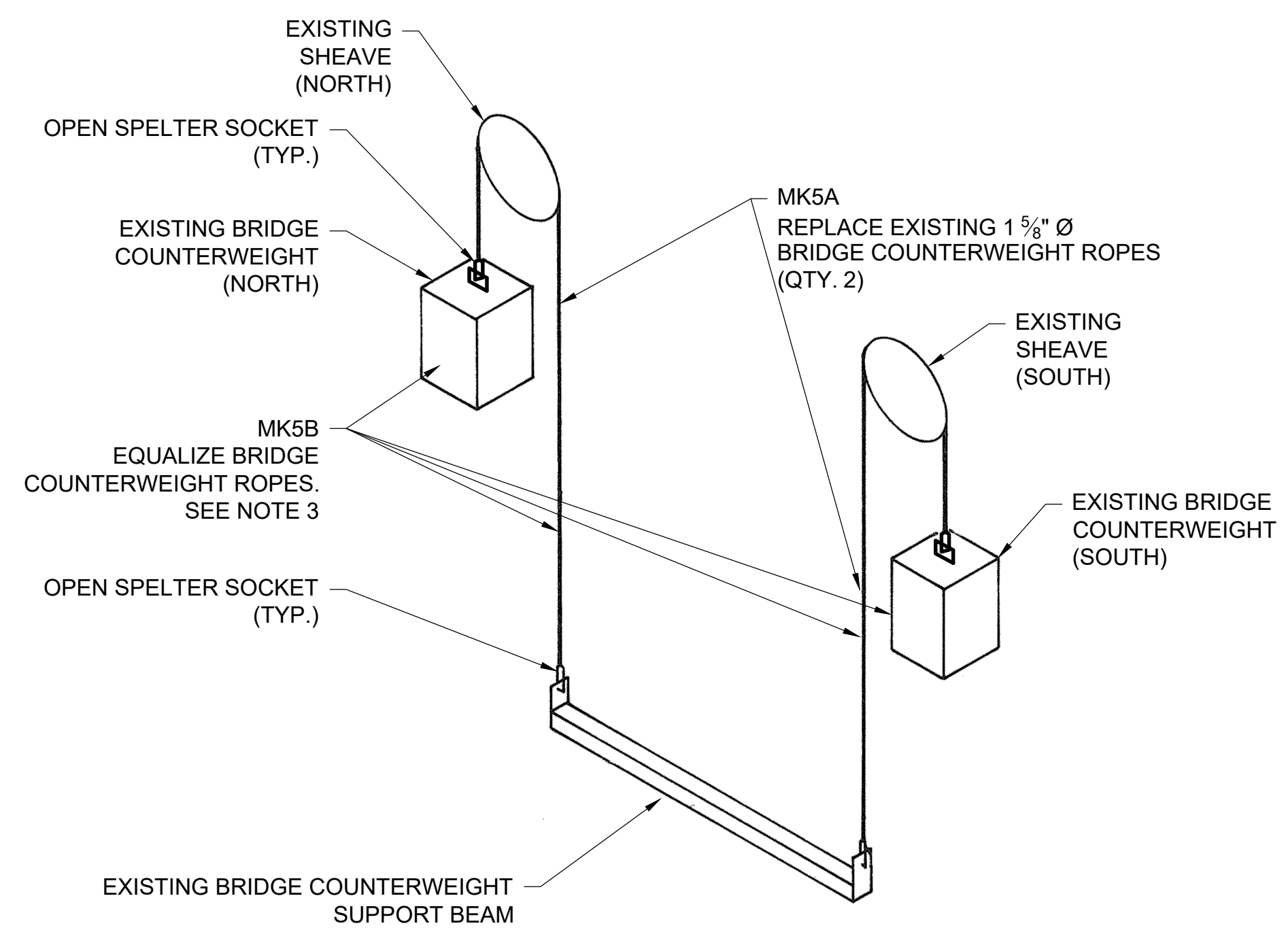
B VIEW B-B
4 SCALE: N.T.S.



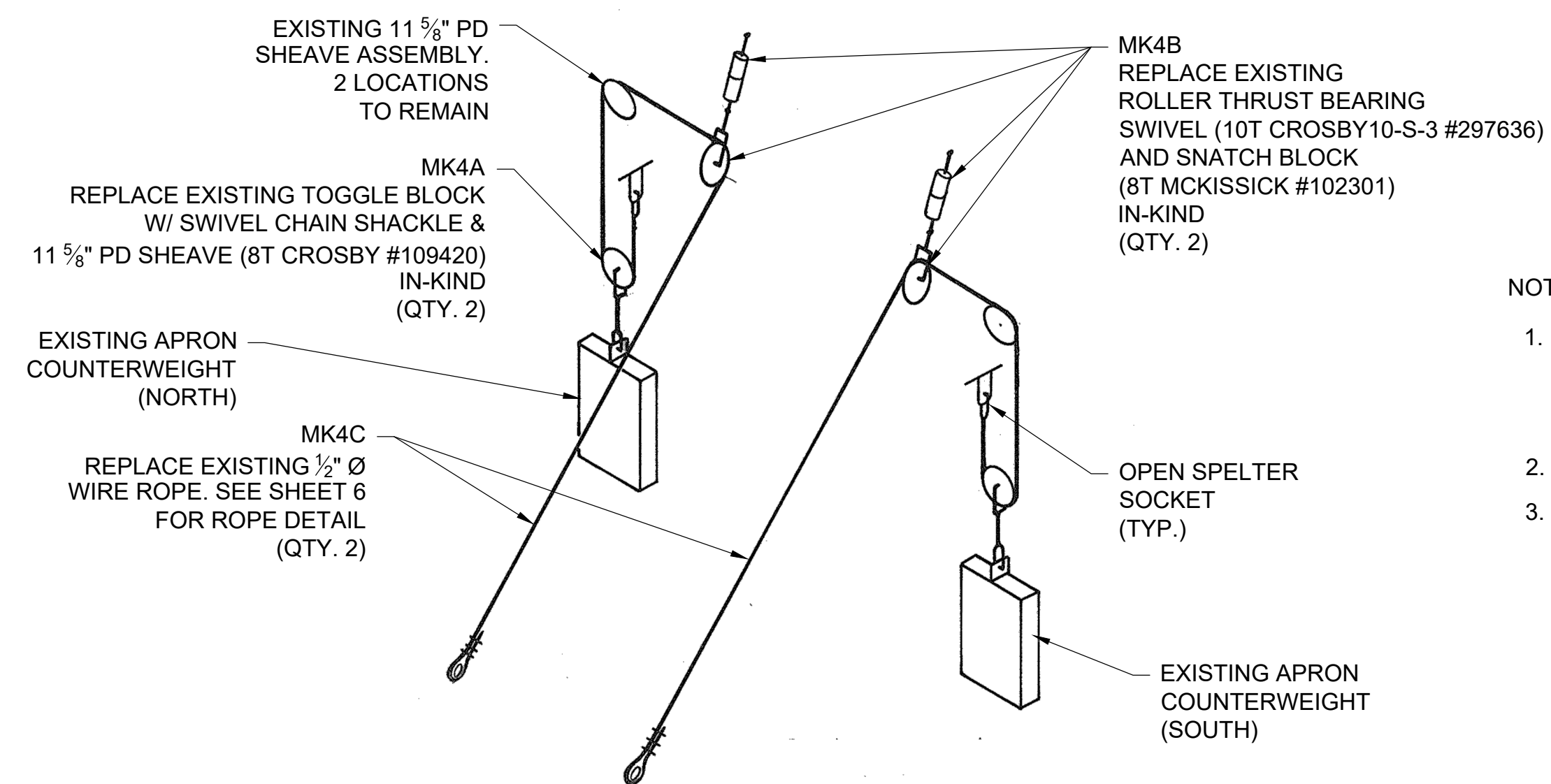
A BRIDGE HOIST OPERATING ROPES - REEVING DIAGRAM
5 SCALE: N.T.S.



C APRON HOIST - REEVING DIAGRAM & HOIST OPERATOR
4 SCALE: N.T.S.



D BRIDGE COUNTERWEIGHT ROPES - REEVING DIAGRAM
4 SCALE: N.T.S.



E APRON COUNTERWEIGHT ROPES - REEVING DIAGRAM
4 SCALE: N.T.S.

- NOTES:
- BRIDGE HOIST OPERATING ROPE SHALL BE REEVED ON THE WINCH DRUM SUCH THAT EACH WIRE ROPE IS TERMINATED THROUGH A HOLE IN THE DRUM OUTBOARD GROOVE AND LAYS AT THE CENTER OF THE DRUM WHEN THE BRIDGE IS FULLY RAISED.
 - ALL EXISTING COMPONENTS TO REMAIN UNLESS NOTED OTHERWISE.
 - EQUALIZE BRIDGE COUNTERWEIGHT ROPE TENSIONS BY ADJUSTING WEIGHT IN EACH COUNTERWEIGHT PER MK5B.

STATE OF MAINE
DEPARTMENT OF TRANSPORTATION
02692000
BRIDGE NO. 6348
WIN
026920.00
BRIDGE PLANS

STATE OF MAINE
LUIS BURGOS
No. 18186
PROFESSIONAL ENGINEER

SIGNATURE
18186
P.E. NUMBER
FEBRUARY 19, 2026
DATE

PROJ. MANAGER	DATE	BY	LAB	REG	REVISIONS	FIELD CHANGES
J. STILLWELL, PE	12-08-25					
DESIGN-DETAILED	01-07-26					
CHECKED-REVIEWED						
DESIGN-DETAILED						
REVISIONS 1						
REVISIONS 2						
REVISIONS 3						
REVISIONS 4						

BRIDGE #6348 - PEAKS ISLAND
PORTLAND ME CUMBERLAND COUNTY
MACHINERY ASSEMBLIES

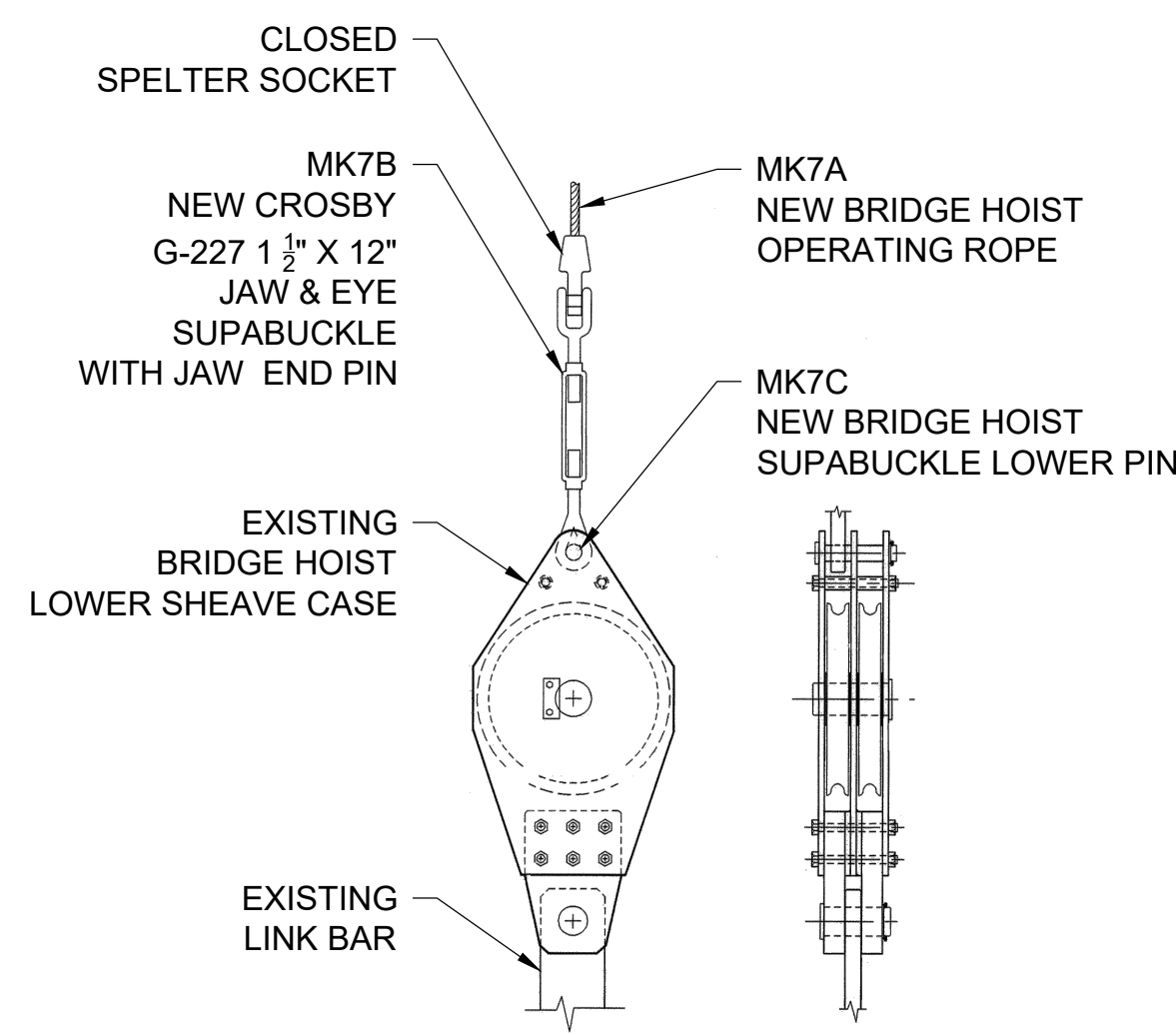
SHEET NUMBER

5

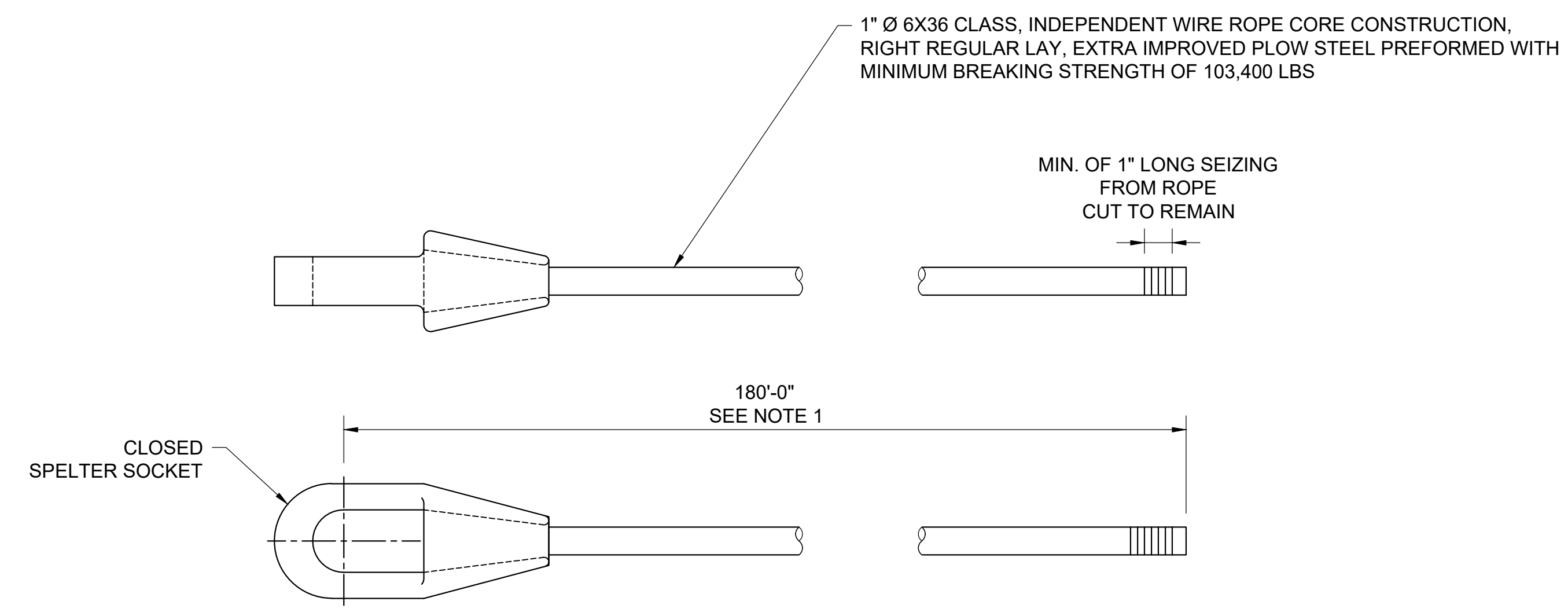
OF 9

WJE
Wiss, Janney, Elstner Associates, Inc.
800 Hyde Park
Doylestown, Pennsylvania 18902
215.340.5830 tel

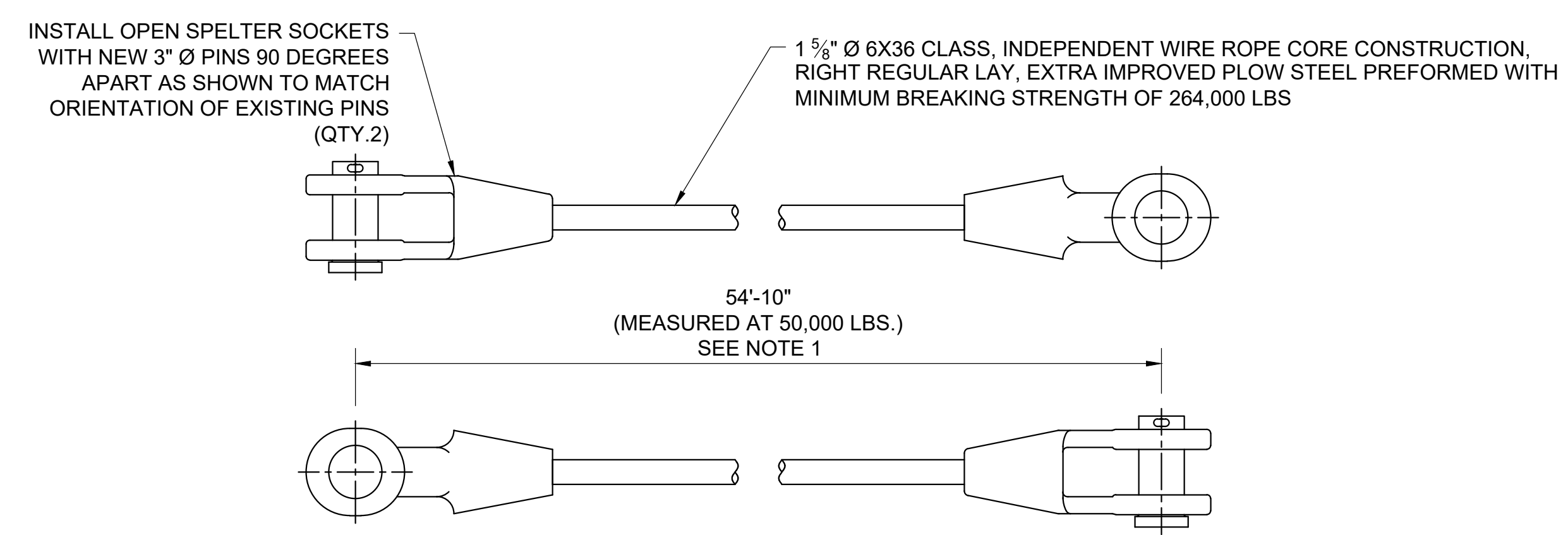
Date: 2/19/2026 3:27 PM
Username: LAB



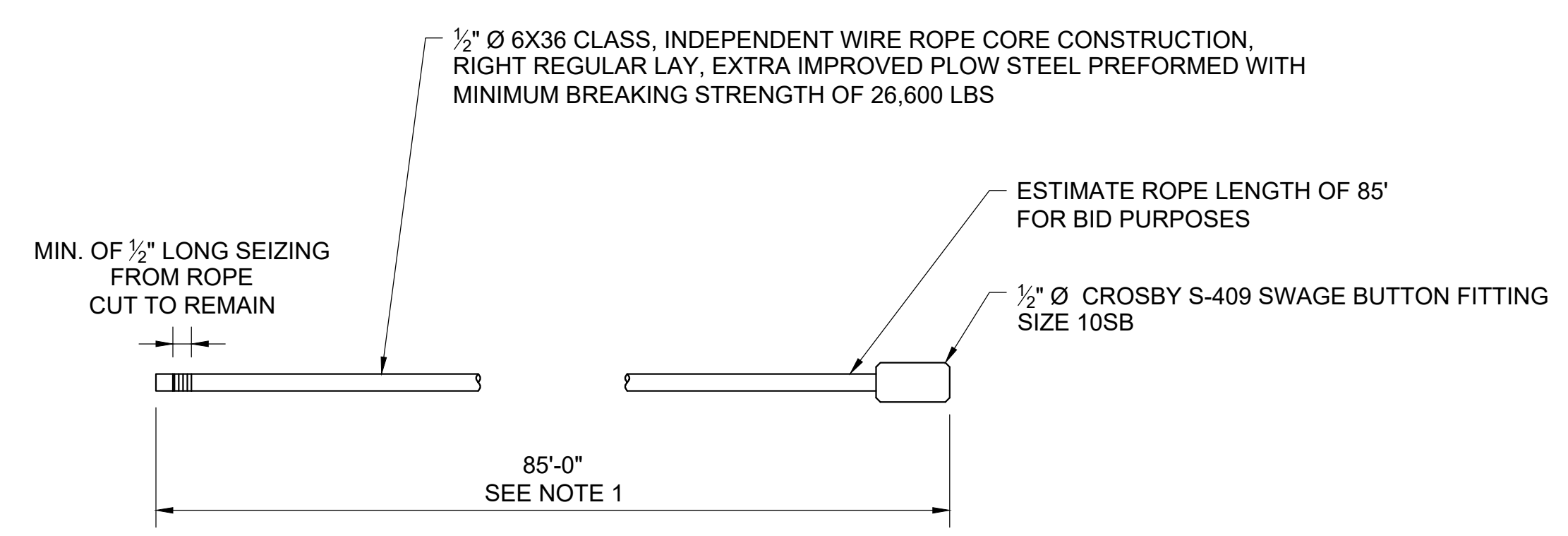
A BRIDGE HOIST LOWER SHEAVE CASE
SCALE: N.T.S.



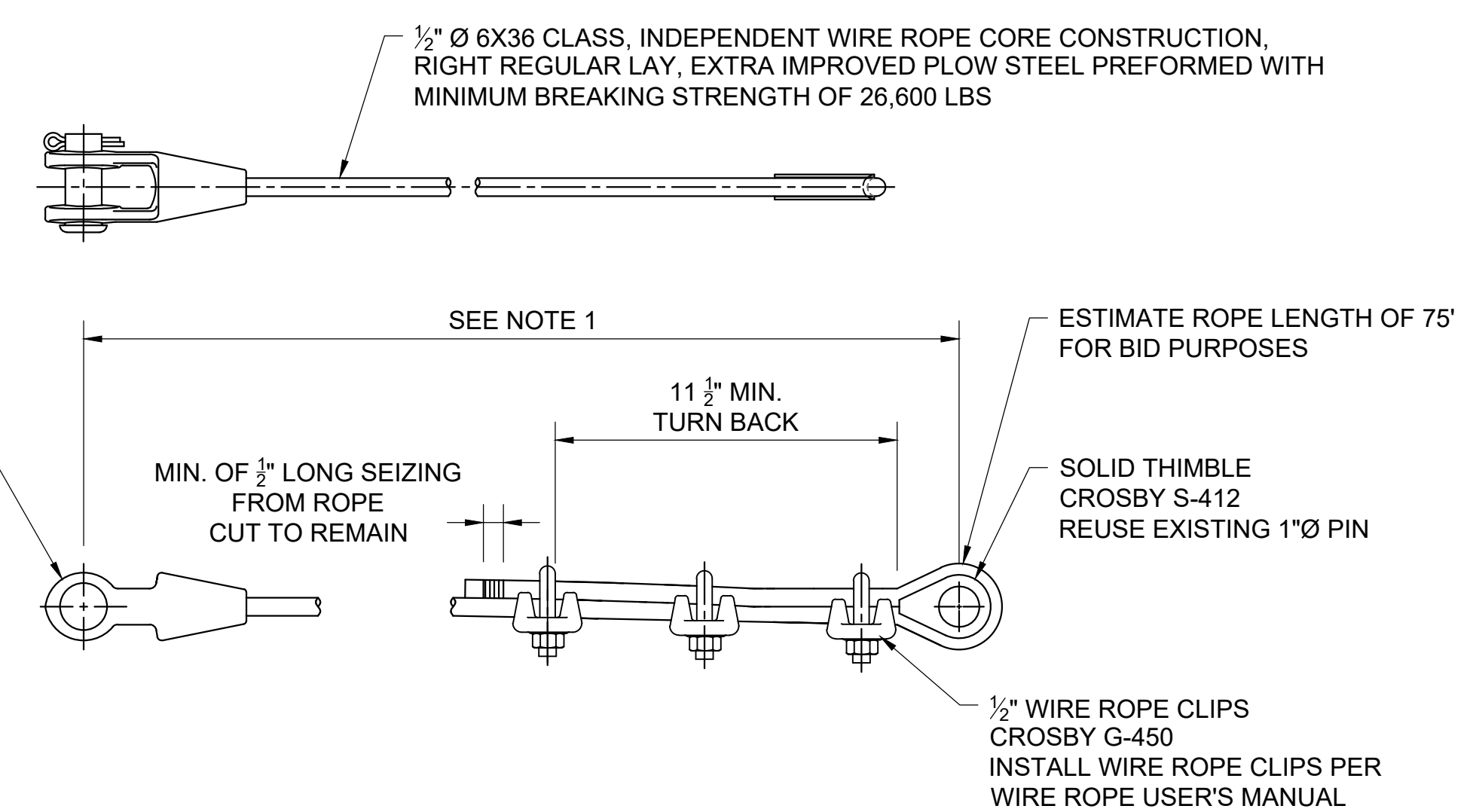
MK7A BRIDGE HOIST OPERATING HOIST ROPE
SCALE: 3\"/>



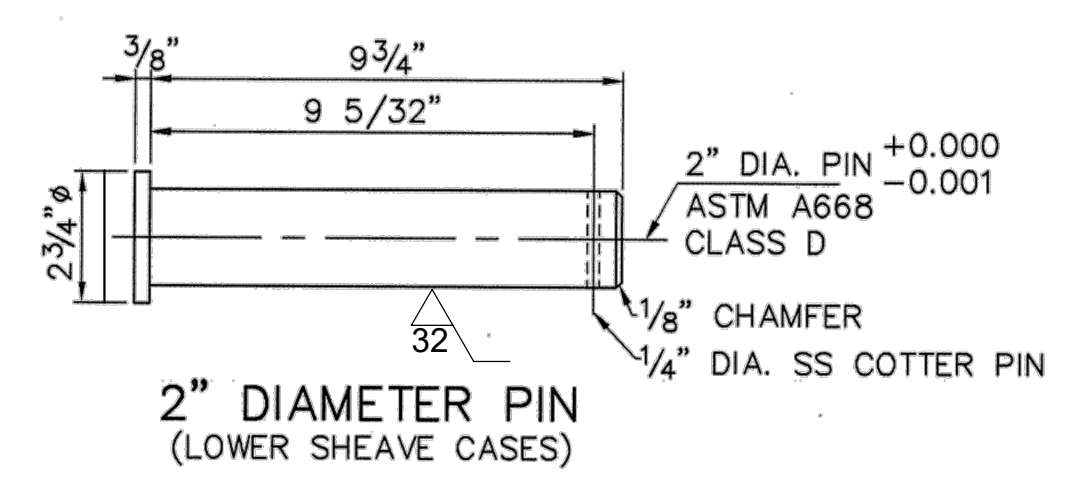
MK5A BRIDGE COUNTERWEIGHT ROPE ASSEMBLY
SCALE: 1 1/2\"/>



MK6 APRON HOIST OPERATING ROPE
SCALE: 3\"/>



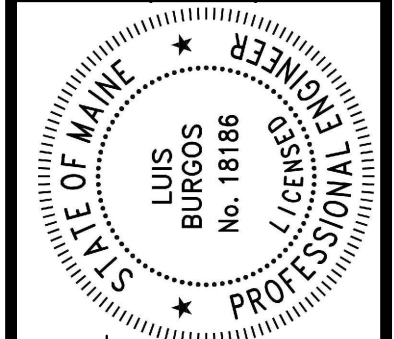
MK4C APRON COUNTERWEIGHT ROPE ASSEMBLY
SCALE: 3\"/>



MK7C BRIDGE HOIST SUPABUCKLE LOWER PIN
SCALE: 3\"/>

- NOTES:
1. ROPE LENGTH SHOWN IS FOR BID PURPOSES ONLY. ALL EXISTING ROPE LENGTHS MUST BE FIELD MEASURED. ROPE FABRICATION SHALL ACCOUNT FOR CONSTRUCTION AND ELASTIC STRETCH. NEW ROPE LENGTHS SHALL MATCH EXISTING LENGTHS AT INSTALL.
 2. PROVIDE NEW PINS FOR OPEN SPELTER SOCKETS WHERE INDICATED. MATERIAL ASTM A668 CLASS D. PROVIDE RC8 FIT BETWEEN PIN AND SOCKET.
 3. SEE WORK SCHEDULE ON SHEET 4 FOR COMPONENT QUANTITIES.
 4. SEE SPECIAL PROVISIONS FOR ADDITIONAL ROPE FABRICATION REQUIREMENTS.

STATE OF MAINE
DEPARTMENT OF TRANSPORTATION
02692000
BRIDGE NO. 6348
WIN 026920.00
BRIDGE PLANS



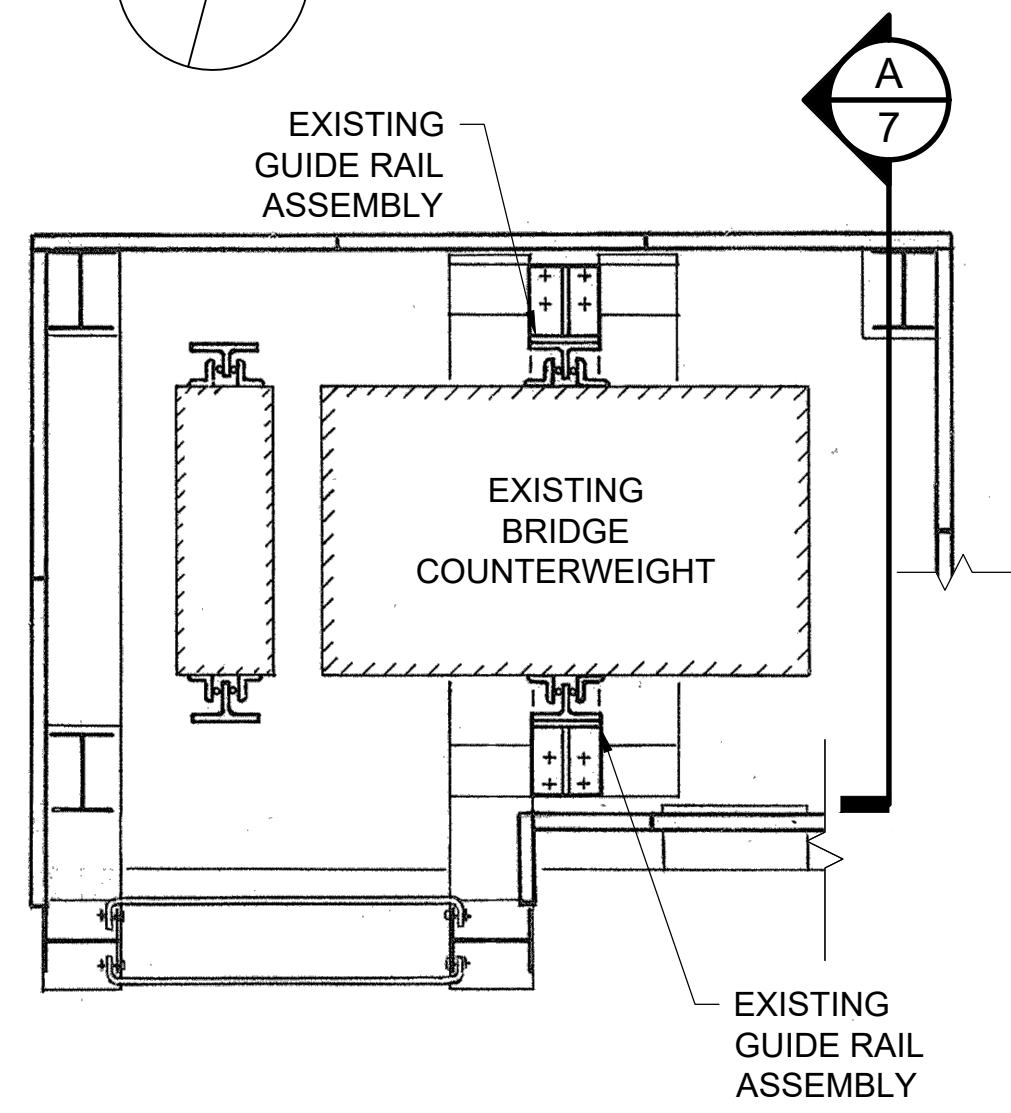
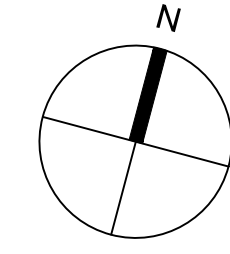
PROJ. MANAGER	J. STILWELL, PE
DESIGN-DETAILED	
CHECKED-REVIEWED	
DESIGN-DETAILED	
DESIGN-DETAILED	
REVISIONS 1	
REVISIONS 2	
REVISIONS 3	
REVISIONS 4	
FIELD CHANGES	
BY	LAB
DATE	12-28-25
DATE	01-07-26
SIGNATURE	
P.E. NUMBER	18186
DATE	FEBRUARY 19, 2026

BRIDGE #6348 - PEAKS ISLAND
PORTLAND ME CUMBERLAND COUNTY
WIRE ROPE DETAILS

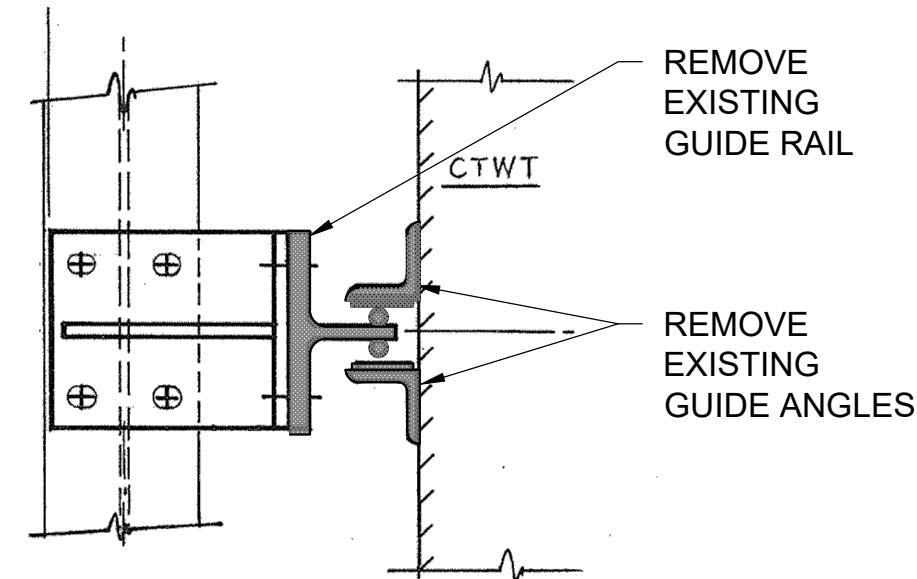
SHEET NUMBER
6
OF 9



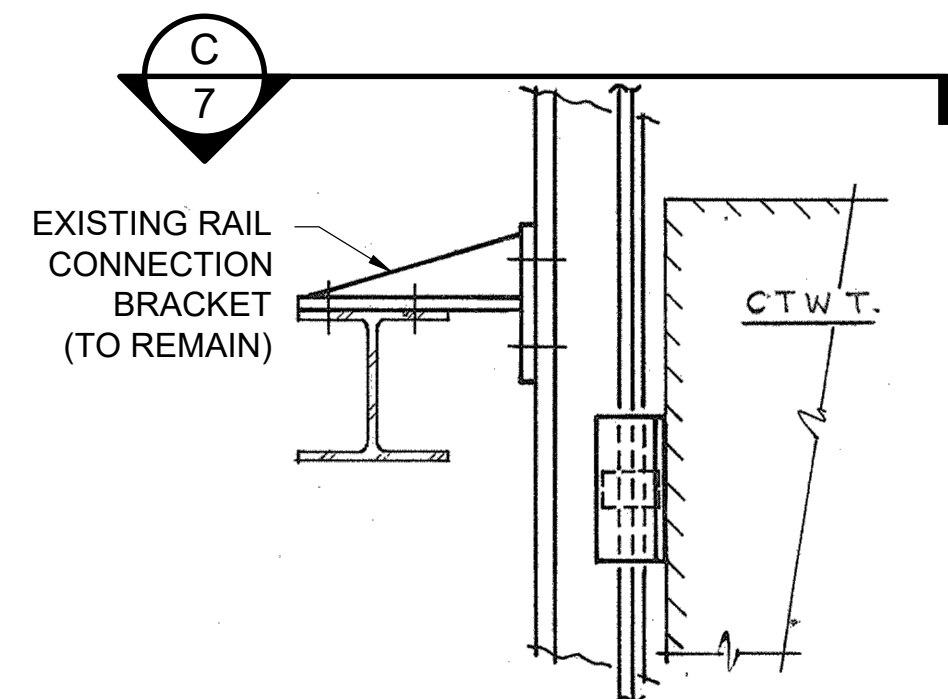
Date: 2/19/2026 3:27 PM
Username: LAB



F
4 PLAN VIEW - BRIDGE COUNTERWEIGHT GUIDE REMOVALS
SCALE: N.T.S.

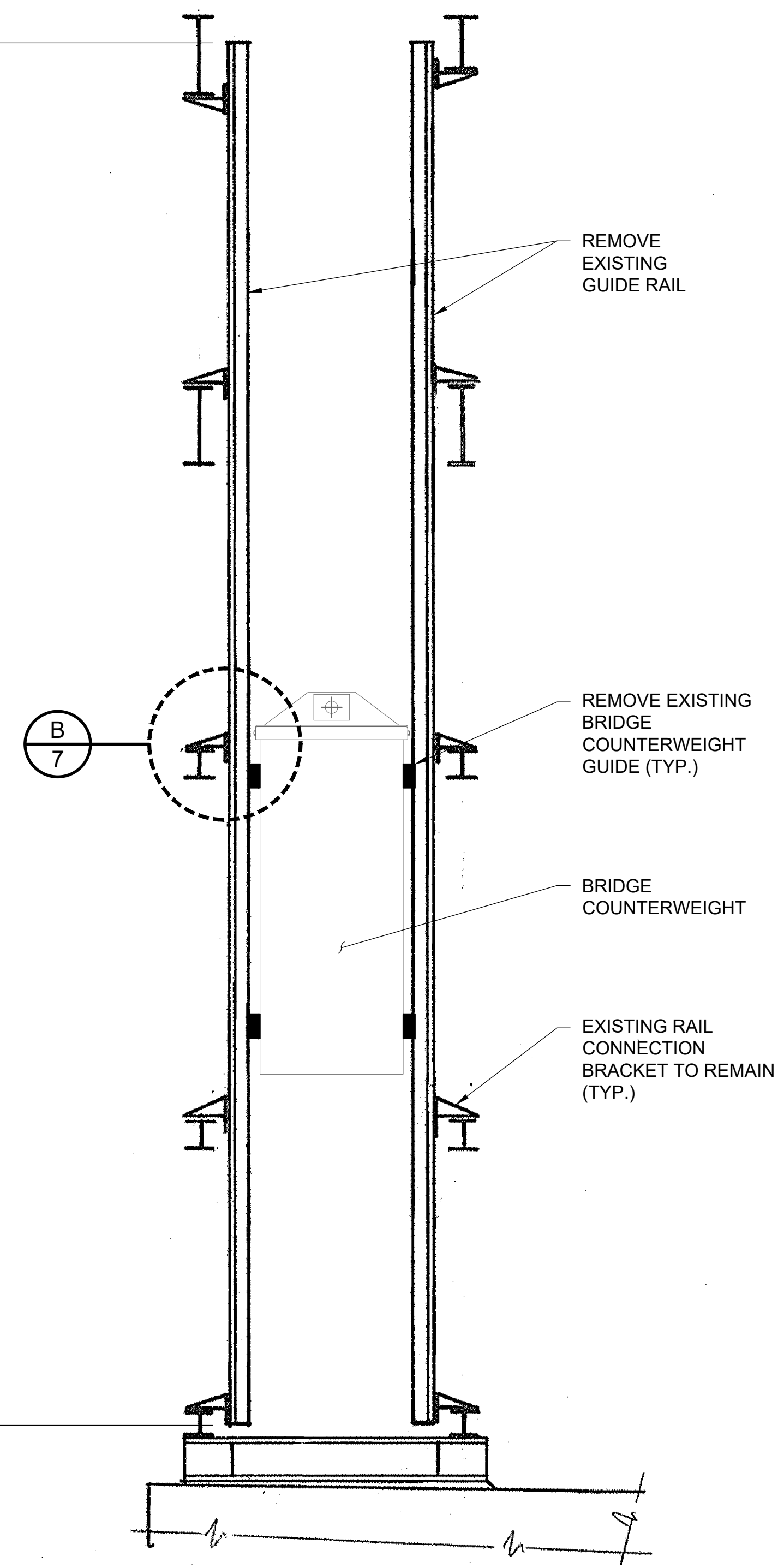


C
7 PLAN VIEW OF EXISTING BRIDGE COUNTERWEIGHT GUIDE
SCALE: N.T.S.



B
7 ELEVATION VIEW OF EXISTING BRIDGE COUNTERWEIGHT GUIDE
SCALE: N.T.S.

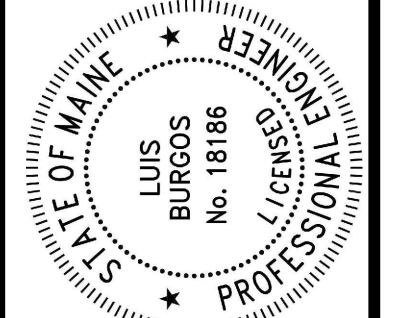
315" NOM.
SEE NOTE 1



A
7 ELEVATION OF EXISTING BRIDGE COUNTERWEIGHT GUIDE SYSTEM
SCALE: N.T.S.
NORTH TOWER SHOWN
SOUTH TOWER SIMILAR

- NOTES:
1. FIELD VERIFY LENGTH OF THE EXISTING BRIDGE COUNTERWEIGHT GUIDE RAIL AT EACH LOCATION PRIOR TO REMOVAL.
 2. EXISTING RAIL CONNECTION BRACKET TO BE REUSED. TAKE CARE TO PREVENT DAMAGE TO THE BRACKET DURING GUIDE REMOVAL.

STATE OF MAINE
DEPARTMENT OF TRANSPORTATION
02692000
WIN
BRIDGE NO. 6348 026920.00
BRIDGE PLANS



SIGNATURE
18186
P.E. NUMBER
FEBRUARY 19, 2026
DATE

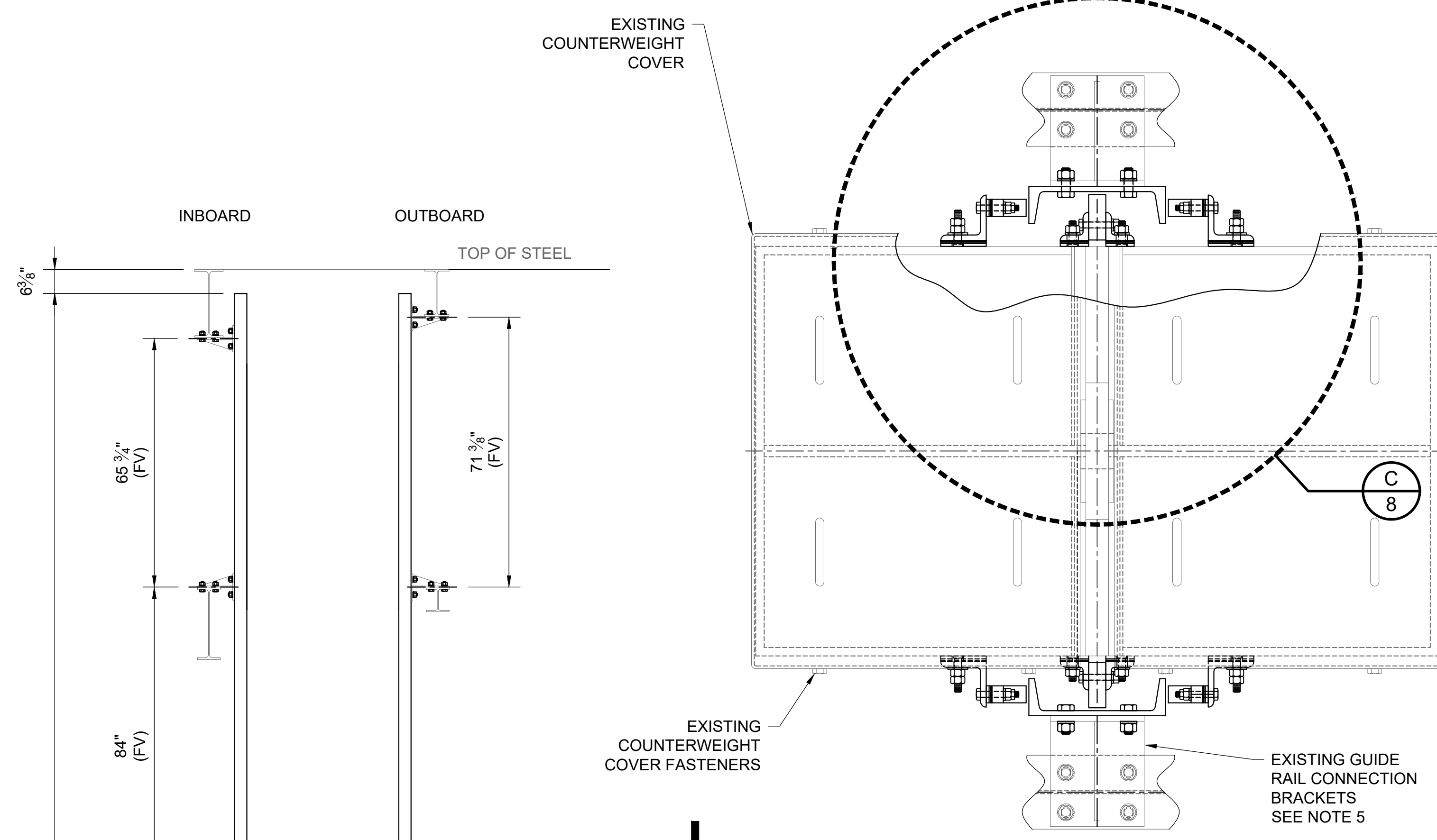
PROJ. MANAGER	J. STILLWELL, PE
DESIGN-DETAILED	
CHECKED-REVIEWED	
DESIGN-DETAILED	
REVISIONS 1	
REVISIONS 2	
REVISIONS 3	
REVISIONS 4	
FIELD CHANGES	

BRIDGE #6348 - PEAKS ISLAND
PORTLAND ME CUMBERLAND COUNTY
BRIDGE COUNTERWEIGHT
GUIDE DEMOLITION

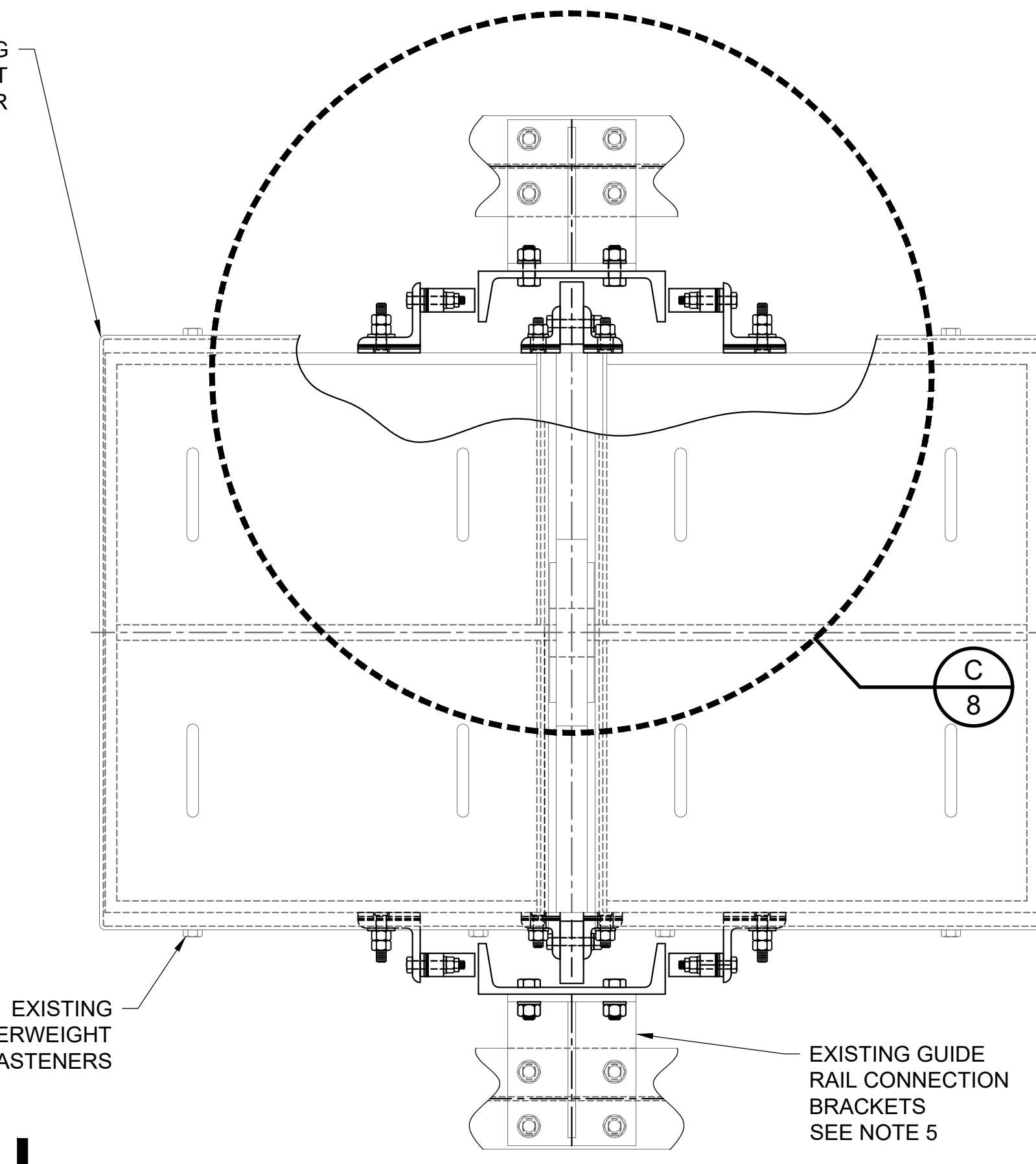
SHEET NUMBER
7
OF 9



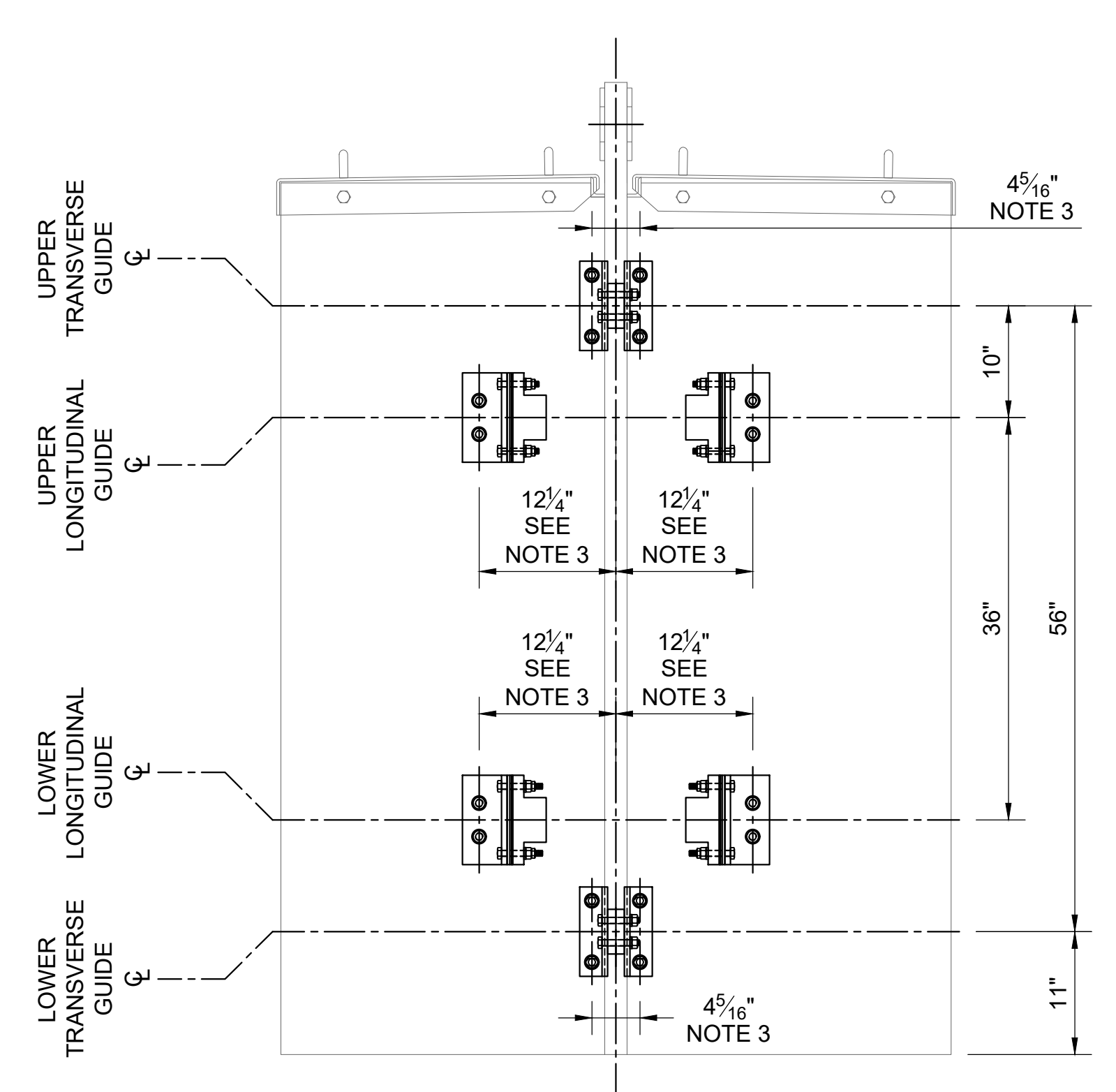
Username: LAB Date: 2/19/2026 3:27 PM



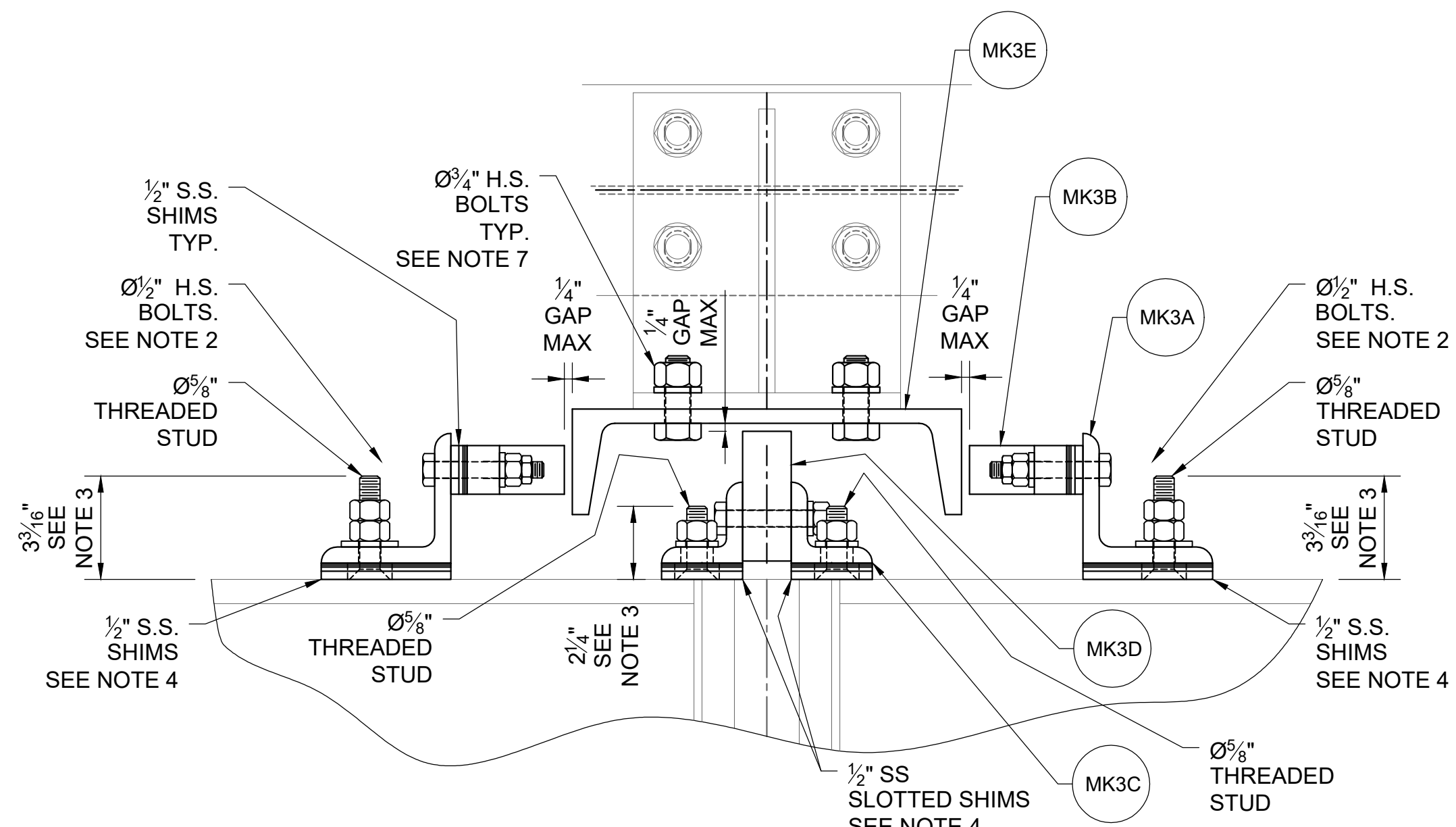
B ELEVATION VIEW OF GUIDE SYSTEM
SCALE: 1/2" = 1"



G PLAN VIEW - BRIDGE COUNTERWEIGHT GUIDE INSTALLATIONS
SCALE: 1 1/2" = 1"
NORTH TOWER SHOWN
SOUTH TOWER SIMILAR



A ELEVATION VIEW OF GUIDE INSTALLATION
SCALE: 1" = 1" GUIDE RAIL NOT SHOWN FOR CLARITY



C PLAN VIEW OF COUNTERWEIGHT GUIDE
SCALE: 3" = 1"

BRIDGE COUNTERWEIGHT GUIDE SCHEDULE

MARK NO.	QTY.* REQ'D PER TOWER	COMPONENT	DESCRIPTION	REFERENCE SHEETS
MK3A	8	LONGITUDINAL GUIDE ANGLE	STEEL ANGLE ASTM A709 GR. 50 SEE NOTE 6	8,9
MK3B	8	LONGITUDINAL GUIDE SHOE	NYLATRON GSM BLUE 1-1/2"X3"X8"	8,9
MK3C	8	TRANSVERSE GUIDE ANGLE	STEEL ANGLE ASTM A709 GR. 50 SEE NOTE 6	8,9
MK3D	4	TRANSVERSE GUIDE SHOE	NYLATRON GSM BLUE 4"X4"X1-1/2"	8,9
MK3E	2	COUNTERWEIGHT GUIDE RAIL	STEEL CHANNEL ASTM A709 GR. 50 SEE NOTE 6	8,9

(*) PROVIDE SUFFICIENT QUANTITIES FOR TWO TOWERS AND SPARE PARTS AS IDENTIFIED IN THE SPECIAL PROVISIONS.

NOTES:

- SEE SHEET M1 FOR GENERAL NOTES APPLICABLE TO THIS DRAWING.
- GUIDE MAXIMUM GAP SHOWN. SHIM ADJUST GUIDES TO ACHIEVE CLEARANCE BETWEEN THE GUIDES AND RAILS THROUGH THE FULL RANGE OF TRAVEL. SEE SPECIAL PROVISIONS FOR TORQUE REQUIREMENT.
- FIELD LOCATE THREADED STUDS TO SUIT ALIGNMENT. PROVIDE 5/8" Ø WELDED STUD, LENGTH SHOWN. SEE SPECIAL PROVISIONS FOR WELD DETAILS.
- PROVIDE SHIMS WITH 1 3/8" Ø OVERSIZED HOLES TO CLEAR STUD WELDS. IF NO SHIM IS USED, PROVIDE 1 3/8" Ø COUNTER BORE, 1/4" DEEP IN MK3A AND MK3C TO CLEAR STUD WELDS.
- GUIDE RAILS TO BE FIELD LOCATED AND INSTALLED TO BE PLUMB WITHIN 1/16" ALONG THE LONGITUDINAL AND TRANSVERSE LENGTH OF RAIL. SHIM AND POSITION RAIL WITH CONNECTION BRACKETS TO ACHIEVE THE RAIL INSTALLATION REQUIREMENTS. ADJUSTMENT OF THE EXISTING GUIDE RAIL CONNECTION BRACKET IS INCIDENTAL TO THE WORK.
- PAINT IN ACCORDANCE TO SECTION 506 OF THE SPECIAL PROVISIONS FOR THIS PROJECT.
- USE HOLES IN EXISTING RAIL CONNECTION BRACKETS AS A TEMPLATE TO LAYOUT HOLES IN NEW RAIL (MK3E). SECURE RAIL WITH HIGH STRENGTH BOLTS. TIGHTEN PER TURN OF THE NUT METHOD.

WJE
Wiss, Janney, Elstner Associates, Inc.
800 Hyde Park
Doylestown, Pennsylvania 18902
215.340.5830 tel

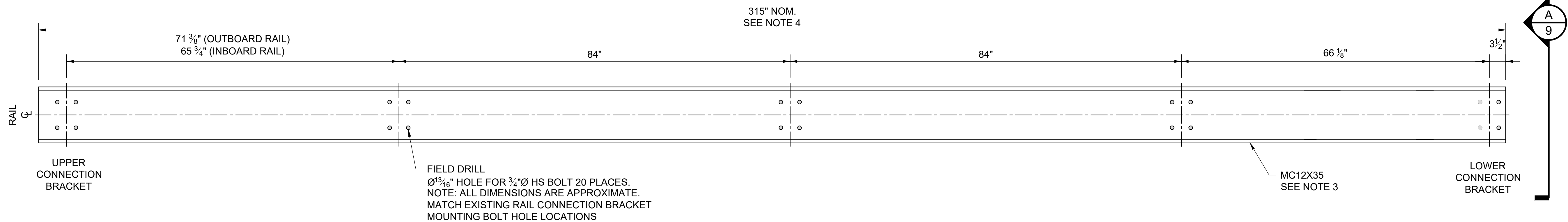
STATE OF MAINE
DEPARTMENT OF TRANSPORTATION
02692000
WIN 026920.00
BRIDGE NO. 6348
BRIDGE PLANS

PROF. ENGINEER
LUIS BURGOS
No. 18186
FEBRUARY 19, 2026
DATE

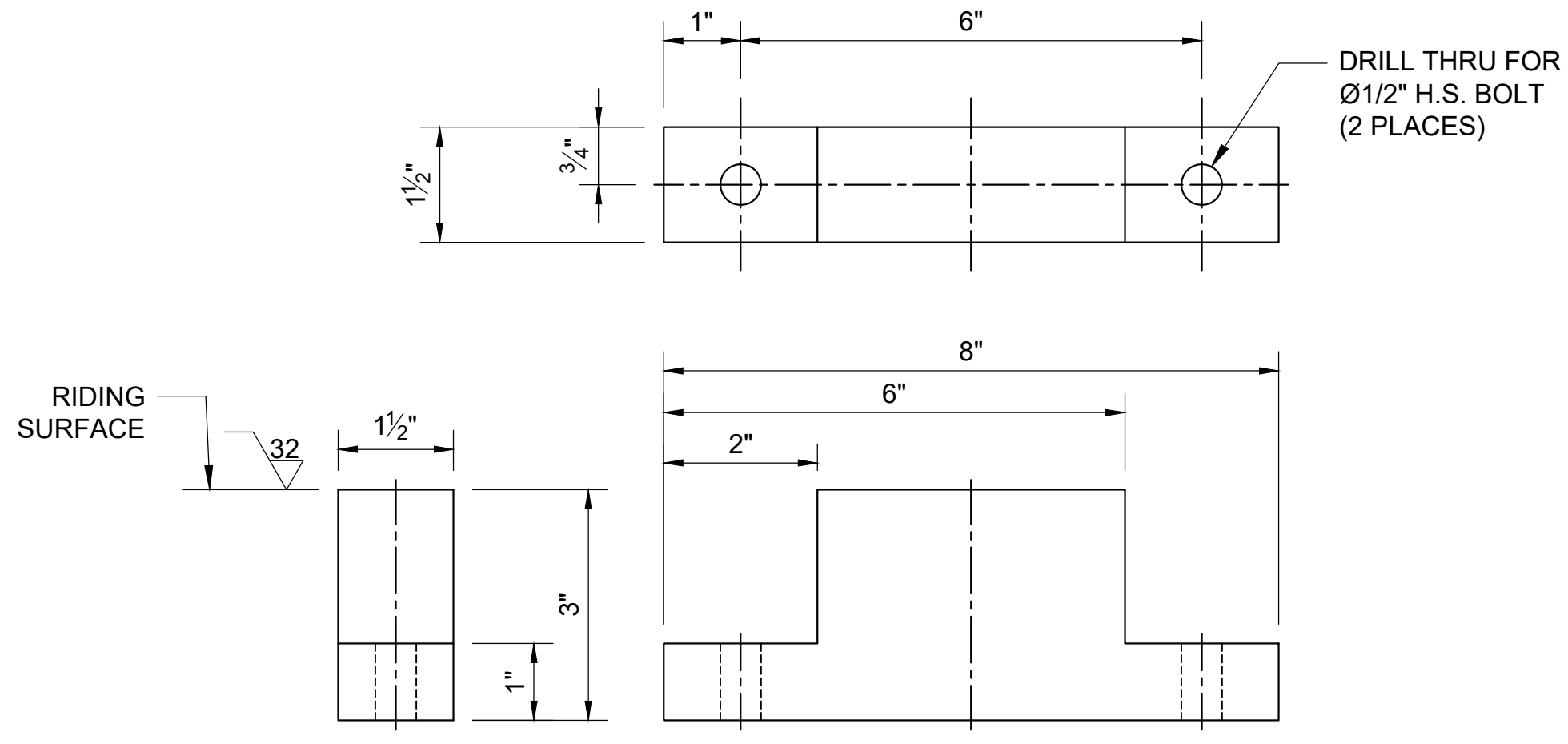
PROJ. MANAGER J. STILLWELL, PE
DESIGN-DETAILED 12-08-25
LAB RGG 01-07-26
CHECKED-REVIEWED
DESIGN-DETAILED
DESIGN-DETAILED
REVISIONS 1
REVISIONS 2
REVISIONS 3
REVISIONS 4
FIELD CHANGES

BRIDGE #6348 - PEAKS ISLAND
PORTLAND ME CUMBERLAND COUNTY
BRIDGE COUNTERWEIGHT
GUIDE MACHINERY ASSEMBLY

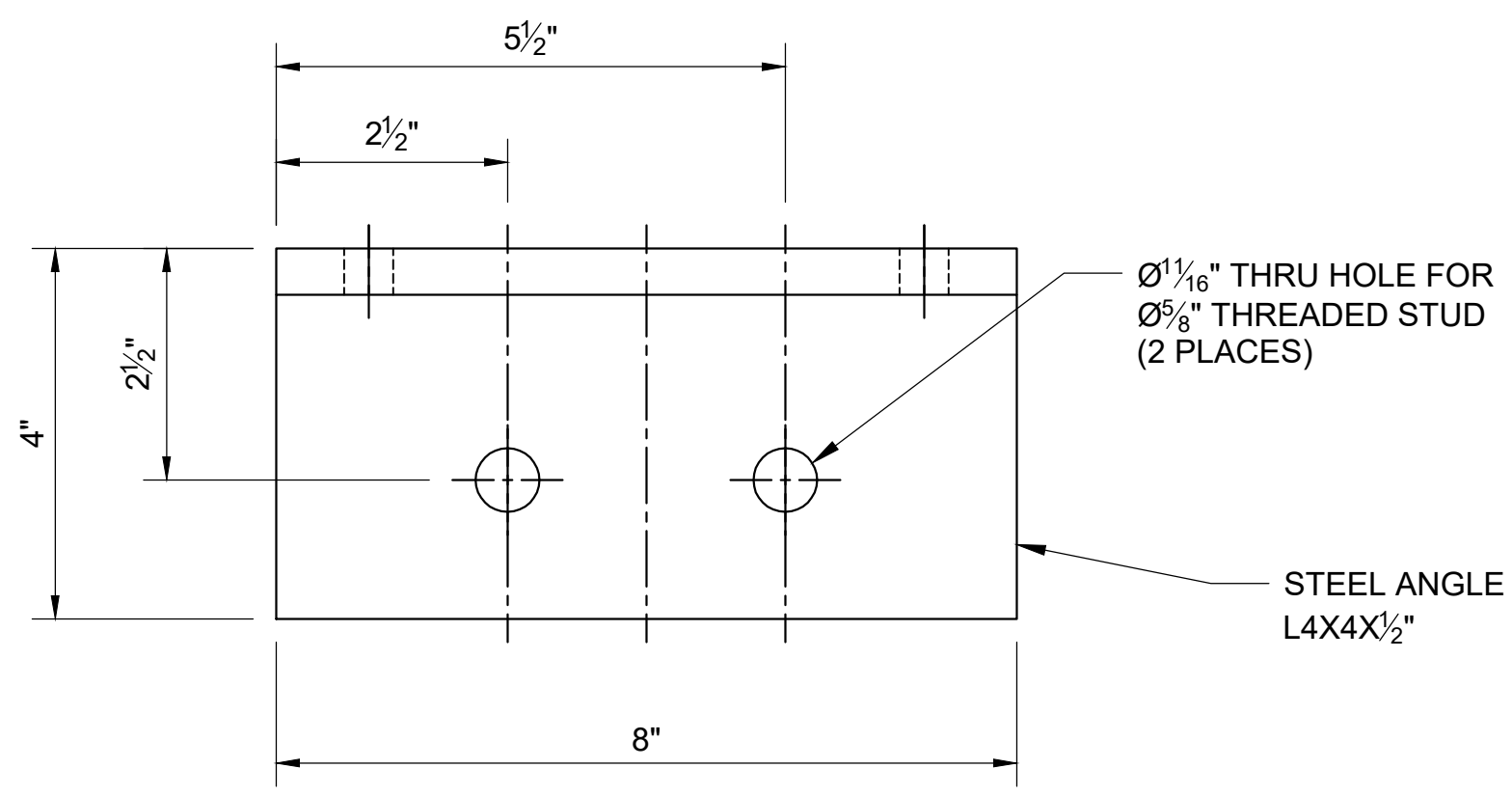
SHEET NUMBER
8
OF 9



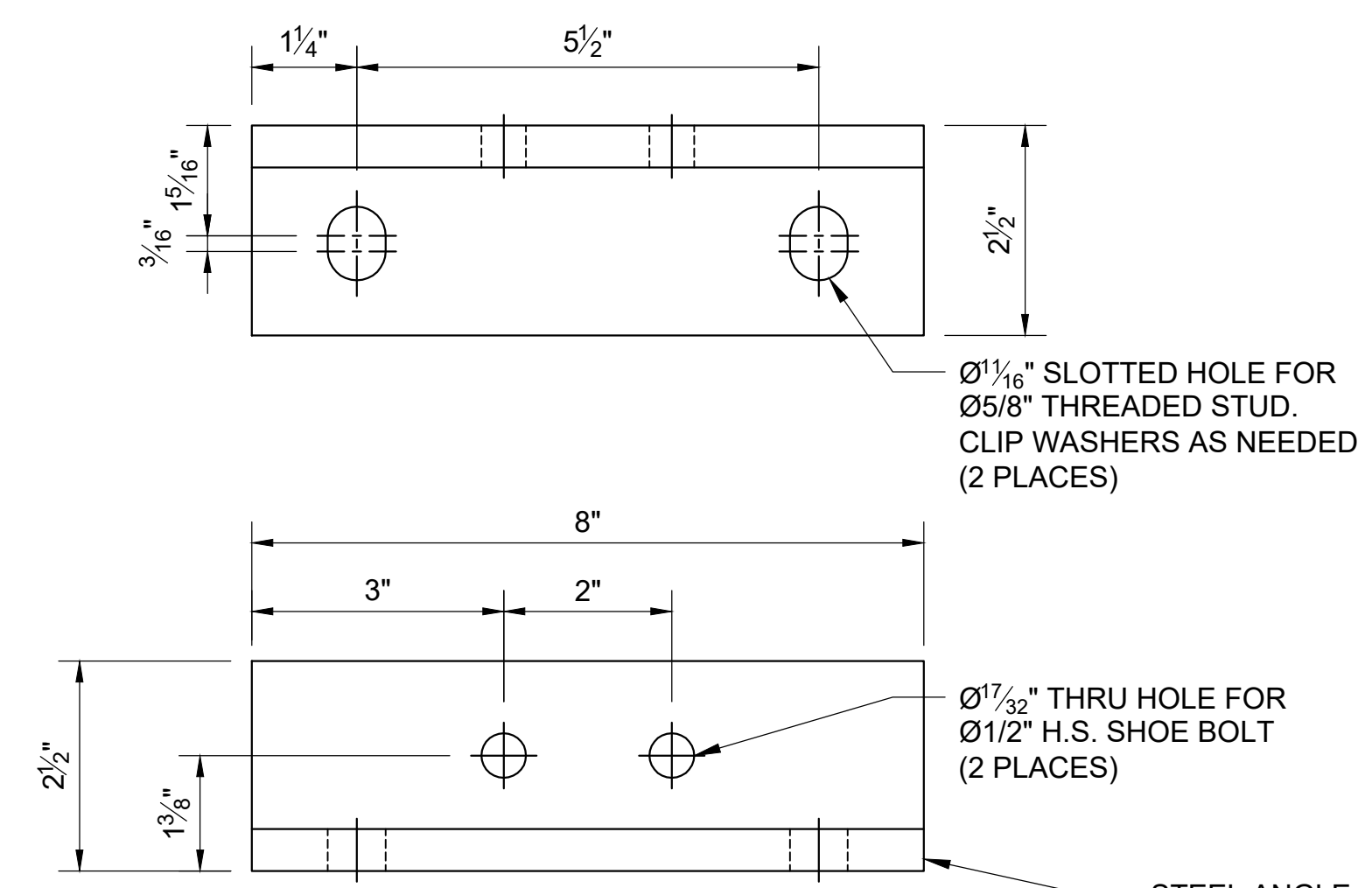
MK3E COUNTERWEIGHT GUIDE RAIL
SCALE: 1"=1'



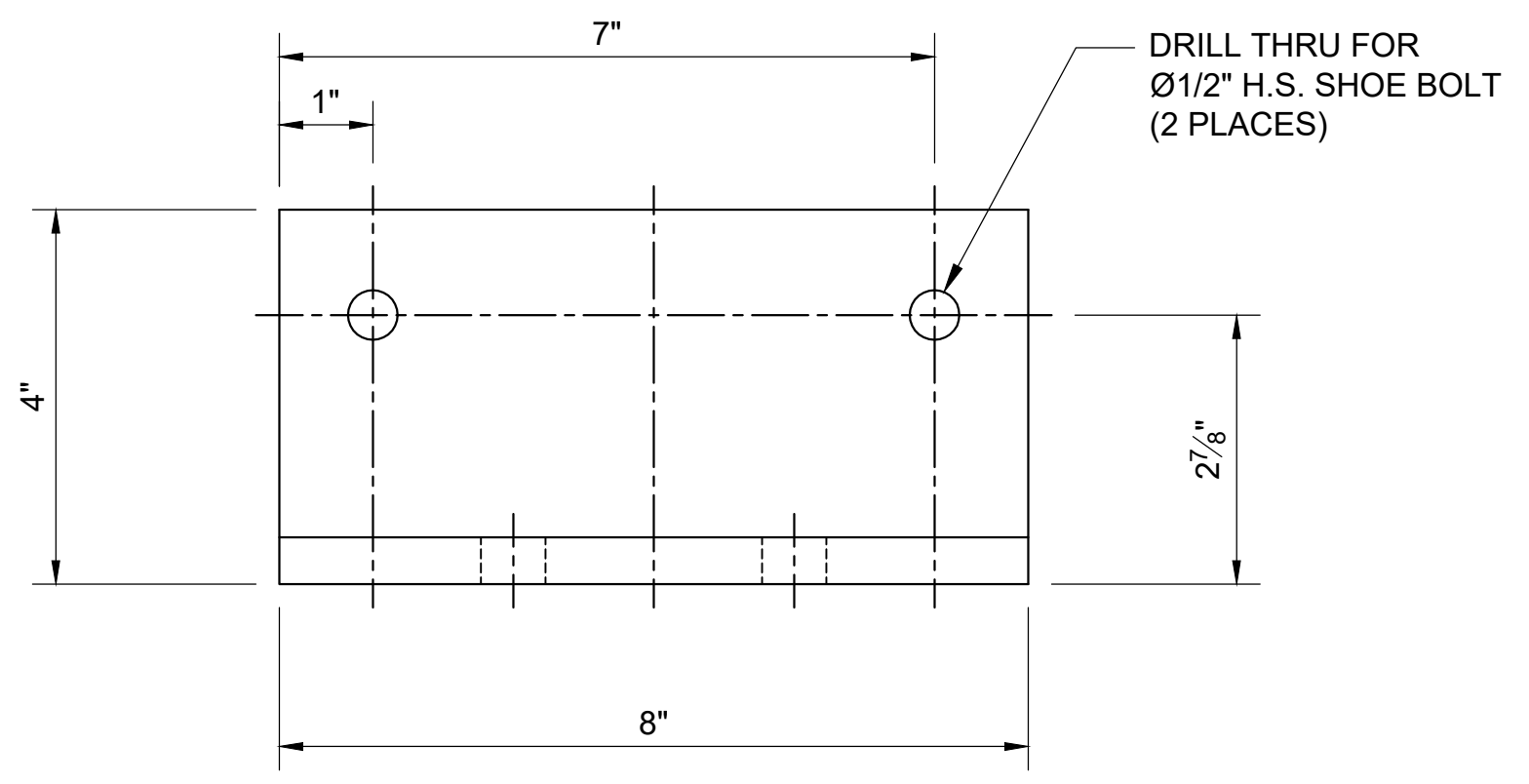
MK3B LONGITUDINAL GUIDE SHOE
SCALE: 6"=1'



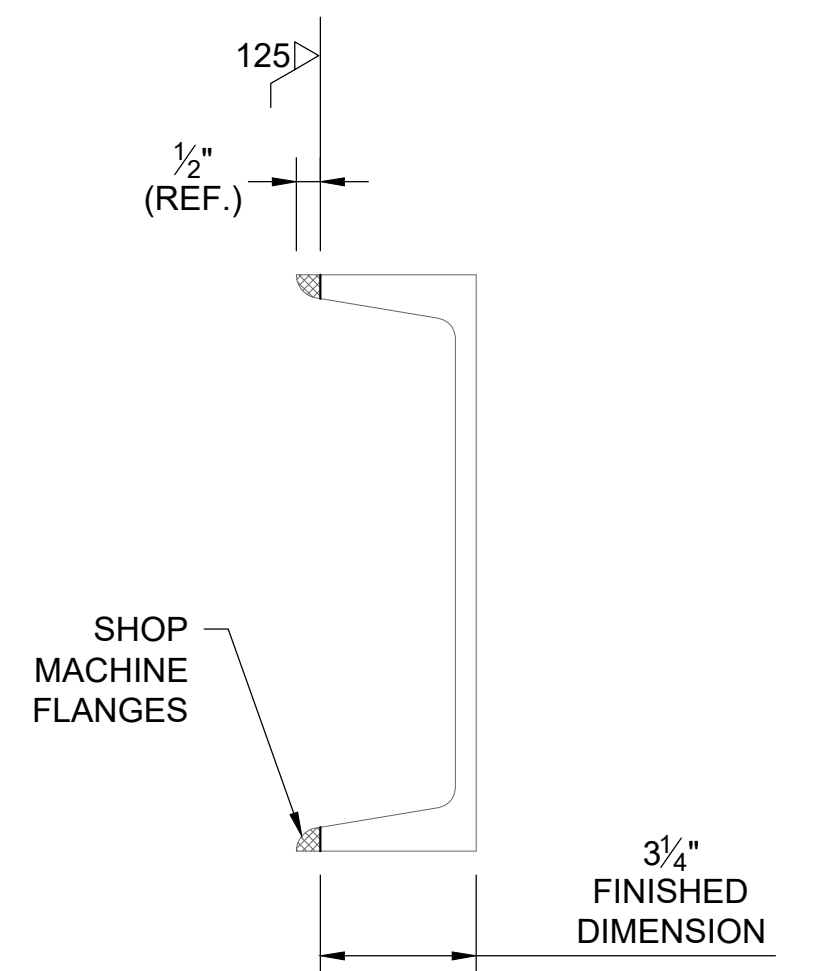
MK3A LONGITUDINAL GUIDE ANGLE
SCALE: 6"=1'



MK3C TRANSVERSE GUIDE ANGLE
SCALE: 6"=1'



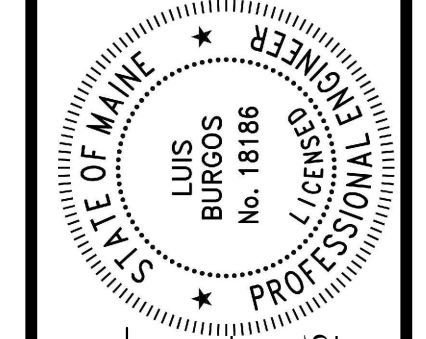
MK3D TRANSVERSE GUIDE SHOE
SCALE: 6"=1'



A COUNTERWEIGHT GUIDE RAIL
SCALE: 3"=1'

- NOTES:
- SEE SHEET M1 FOR GENERAL NOTES APPLICABLE TO THIS DRAWING.
 - SEE SHEET 8 FOR GUIDE SCHEDULE WITH COMPONENT QUANTITIES AND MATERIAL REQUIREMENTS.
 - CONTRACTOR IS RESPONSIBLE FOR PROVIDING CHANNEL MK3E OF SUFFICIENT STRAIGHTNESS TO MEET ALIGNMENT TOLERANCES SHOWN ON THE DRAWINGS.
 - MATCH EXISTING GUIDE RAIL LENGTH. FIELD VERIFY PER NOTE 1 ON SHEET 7.

STATE OF MAINE
DEPARTMENT OF TRANSPORTATION
02692000
WIN
BRIDGE NO. 6348
026920.00
BRIDGE PLANS



SIGNATURE
18186
P.E. NUMBER
FEBRUARY 19, 2026
DATE

PROJ. MANAGER	DATE	BY	LAB	REG
J. STILLWELL, PE	12-08-25			
DESIGN-DETAILED	01-07-26			
CHECKED-REVIEWED				
DESIGN-DETAILED				
REVISIONS 1				
REVISIONS 2				
REVISIONS 3				
REVISIONS 4				
FIELD CHANGES				

BRIDGE #6348 - PEAKS ISLAND
PORTLAND ME
CUMBERLAND COUNTY
BRIDGE COUNTERWEIGHT
GUIDE PART DETAILS

SHEET NUMBER
9
OF 9

