

STATE OF MAINE
DEPARTMENT OF TRANSPORTATION



HALLOWELL
KENNEBEC COUNTY
VAUGHAN MEMORIAL BRIDGE
OVER
VAUGHAN BROOK
LITCHFIELD ROAD
FEDERAL AID PROJECT NO. 2546300
PROJECT LENGTH 0.05 mi.
BRIDGE NO. 0490

LIST OF DRAWINGS

Title Sheet	1
Estimated Quantities and General Construction Notes	2
General Plan	3
Existing & Sub-Structure Rehab Views	4
Bridge Structure Rehab Details	5

TRAFFIC DATA

Current (2023) AADT	1450
Future (2035) AADT	1540
DHV - % of AADT	12%
Design Hour Volume	185
Heavy Trucks (% of AADT)	5%
Heavy Trucks (% of DHV)	2%
Directional Distribution (% of DHV)	67%
18 kip Equivalent P 2.0	23
18 kip Equivalent P 2.5	22
Design Speed (mph)	45

UTILITIES

CMP (Central Maine Power)
Charter Communications Inc.
Consolidated Communications

MAINTENANCE OF TRAFFIC

Daytime lane closures maintaining one-way
alternating traffic during construction.

<u>PROJECT LOCATION</u>	Located 0.29 of a mile northeast of Hope Drive Over Vaughan Brook Lat./Long. 44°16'38.99" N 69°48'10.76" W
<u>PROGRAM AREA</u>	Highway Bridges - Traditional
<u>OUTLINE OF WORK</u>	Bridge Rehabilitation

02546300 WIN 25463.00

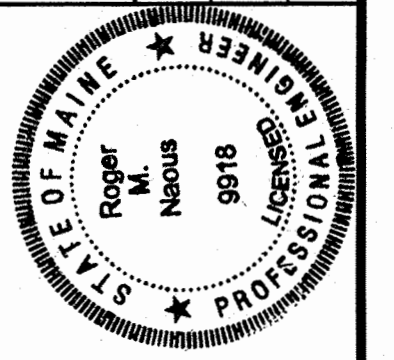
HALLOWELL
VAUGHAN MEMORIAL BRIDGE

TITLE SHEET

SHEET NUMBER

1

OF 5



SIGNATURE
P.E. NUMBER
DATE

9918
AUG 7, 2023

PROGRAM	BRIDGE PROGRAM
PROJECT MANAGER	DEVAN EATON
DESIGNER	ROGER NABUS
CONSULTANT	
PROJECT RESIDENT	
CONTRACTOR	
PROJECT COMPLETION DATE	

STATE OF MAINE
DEPARTMENT OF TRANSPORTATION

APPROVED

COMMISSIONER: [Signature]
DEPUTY CHIEF ENGINEER: [Signature]

DATE
8/29/23
9/29/23

ESTIMATED QUANTITIES			
ITEM NO.	DESCRIPTION	QUANTITY	UNIT
203.20	COMMON EXCAVATION	10	CY
511.07	COFFERDAM: UPSTREAM	1	LS
511.07	COFFERDAM: DOWNSTREAM	1	LS
525.26	REPOINTING GRANITE MASONRY	1720	SF
525.301	GRANITE MASONRY	35	CF
610.08	PLAIN RIPRAP	10	CY
619.14	EROSION CONTROL MIX	2	CY
629.05	HAND LABOR, STRAIGHT TIME	40	HR
629.07	STONE MASON	40	HR
652.33	DRUM	20	EA
652.34	CONE	40	EA
652.35	CONSTRUCTION SIGNS	400	SF
652.361	MAINTENANCE OF TRAFFIC CONTROL DEVICES	1	LS
652.38	FLAGGER	100	HR
656.75	TEMP SOIL EROSION & WATER POLLUTION CONTROL	1	LS
659.10	MOBILIZATION	1	LS

GENERAL CONSTRUCTION NOTES

1. Project information referred to below may be accessed at the following MaineDOT web address: <http://www.maine.gov/mdot/contractors/>

2. The existing bridge plans may be accessed at the MaineDOT web address. The plans are reproductions of the original drawings as prepared for the construction of the bridge. It is very unlikely that the plans will show any construction field changes or any alterations which may have been made to the bridge during its life span.

3. Quantities included for pay items measured and paid for by Lump Sum are estimated quantities and are provided by MaineDOT for informational purposes only. Lump Sum pay items will be paid for at the Contract Bid amount, with no addition or reduction in payment to the Contractor if the actual final quantities are different from the MaineDOT provided estimated quantities, except as follows:

a. If a Lump Sum pay item is eliminated, the requirements of Standard Specifications Section 109.2, Elimination of Items, will take precedence.

b. If other Contract Documents specifically allow a change in payment for a Lump Sum pay item, those requirements will be followed.

c. If a design change results in changes to estimated quantities for Lump Sum pay items, price adjustments will be made in accordance with Standard Specifications Section 109.7, Equitable Adjustments to Compensation and Time.

4. The Contractor shall work with the Department for sourcing the new Granite material.

5. Erosion Control Mix may be substituted in those areas normally receiving loam and seed as directed by the Resident. Placement shall be in accordance with Standard Specifications Section 619, Mulch. Payment will be made under Pay Item 619.14, Erosion Control Mix.

STATE OF MAINE
DEPARTMENT OF TRANSPORTATION
02546300
WIN
25463.00
BRIDGE NO. 0490
BRIDGE PLANS

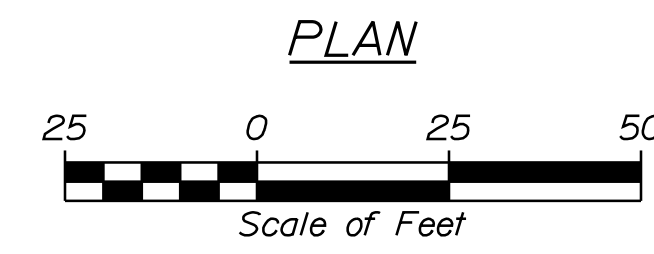
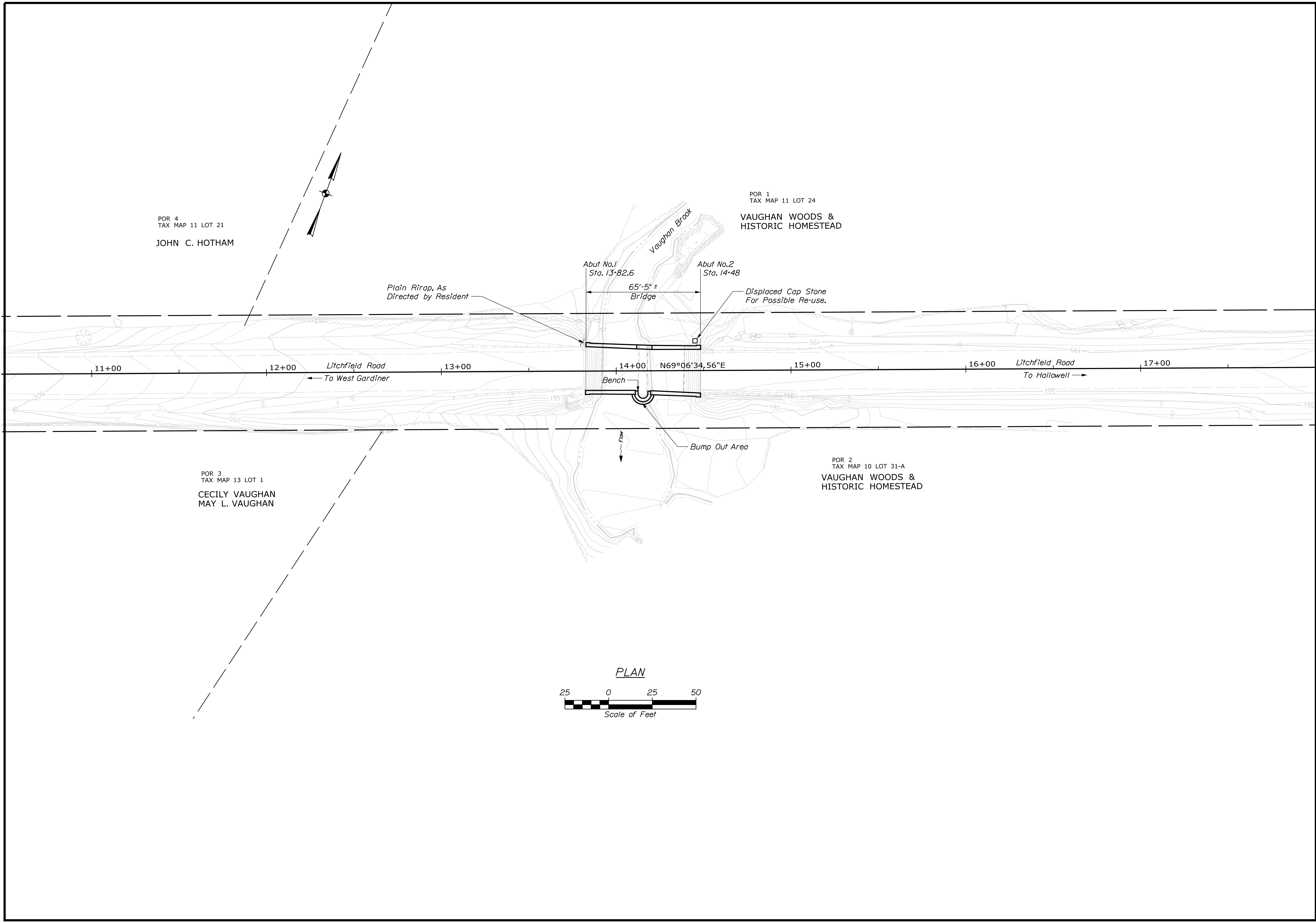
SIGNATURE
P.E. NUMBER
DATE

PROJ. MANAGER	DEVAN EATON	BY	DATE
DESIGN-DETAILED	R. NAOUS	M. CRITCHLOW	JUL 2023
CHECKED-REVIEWED			
DESIGN-DETAILED			
REVISIONS 1			
REVISIONS 2			
REVISIONS 3			
REVISIONS 4			
FIELD CHANGES			

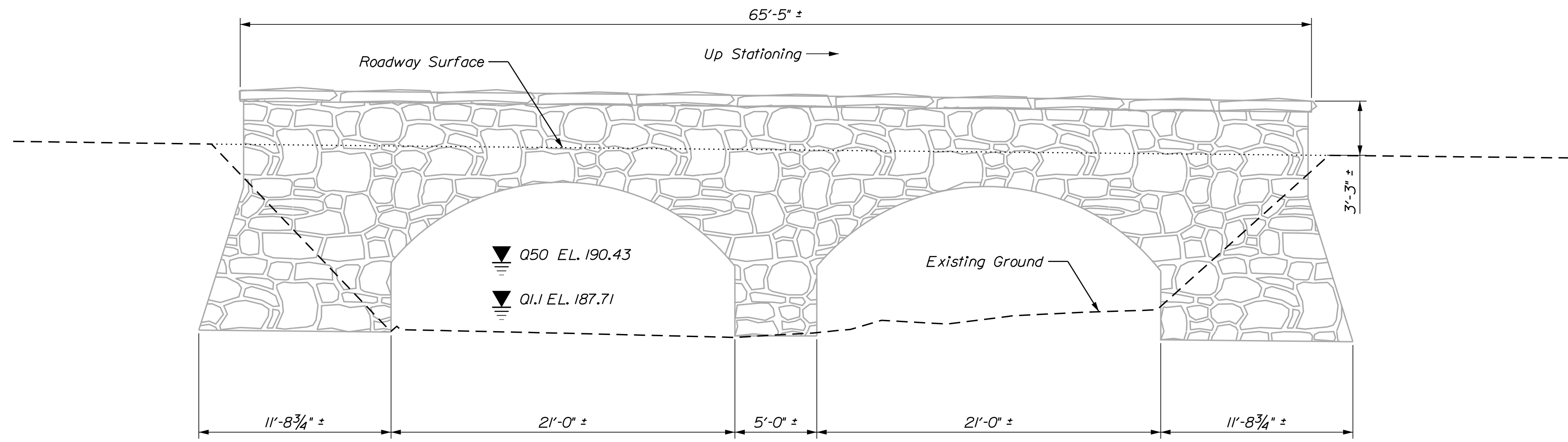
VAUGHAN MEMORIAL BRIDGE
VAUGHAN BROOK
HALLOWELL KENNEBEC COUNTY
ESTIMATED QUANTITIES &
GENERAL CONSTRUCTION NOTES

SHEET NUMBER
2
OF 5

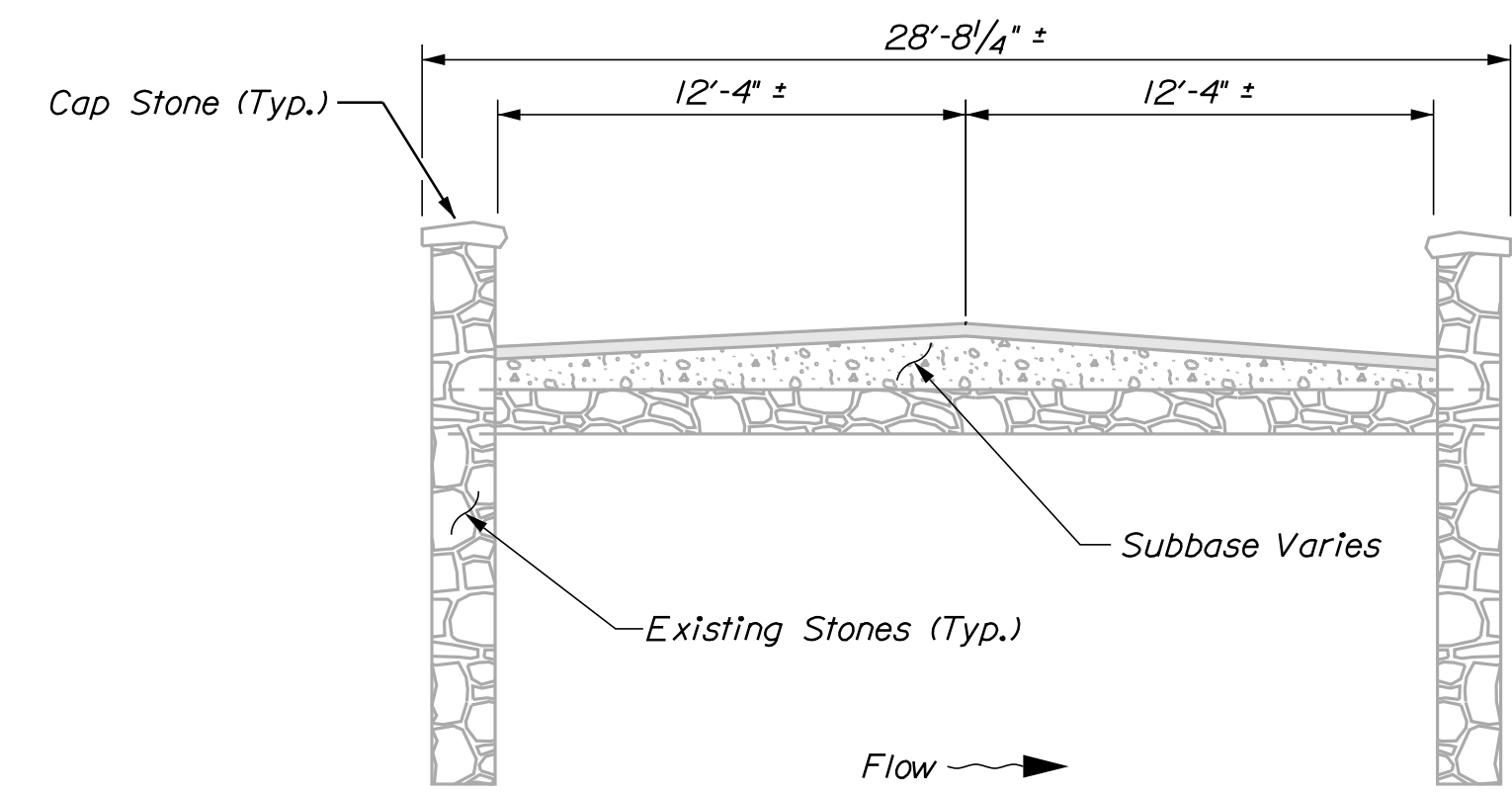
Filename: ... \00\BRIDGE\MSTA\003_Plan.dgn
 Username: Matthew Critchlow
 Date: 8/22/2023
 Division: BRIDGE



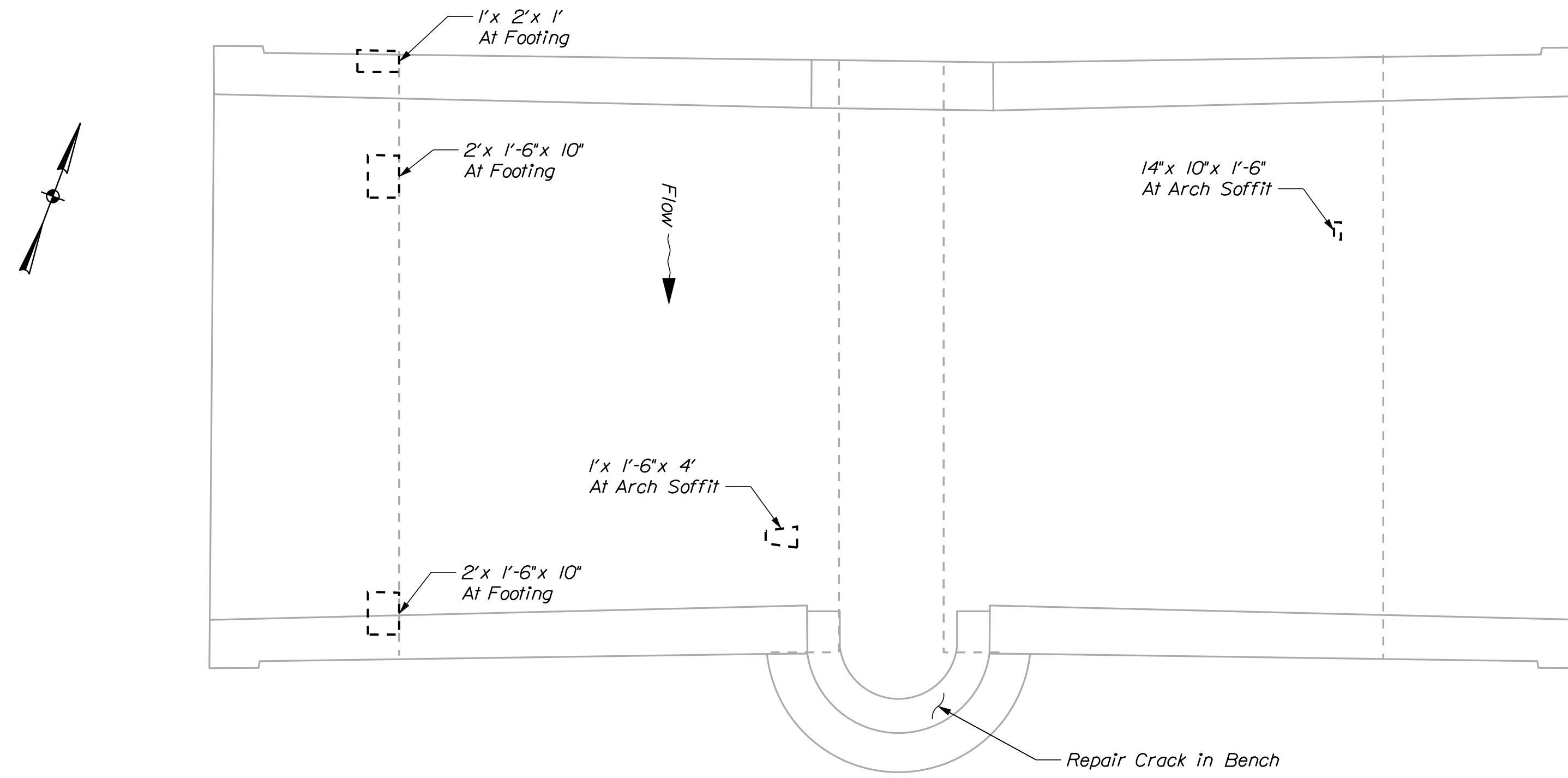
STATE OF MAINE DEPARTMENT OF TRANSPORTATION		02546300
VAUGHAN MEMORIAL BRIDGE VAUGHAN BROOK HALLOWELL KENNEBEC COUNTY		BRIDGE NO. 0490 WIN 25463.00
GENERAL PLAN		BRIDGE PLANS
SHEET NUMBER		DATE
2		P.E. NUMBER
OF 5		SIGNATURE
PROJ. MANAGER	D. EATON	BY
DESIGN-DETAILED	R. NAJOS	M. CRITCHLOW
CHECKED-REVIEWED		JUL 2023
DESIGN-DETAILED		
REVISIONS 1		
REVISIONS 2		
REVISIONS 3		
REVISIONS 4		
FIELD CHANGES		



Existing Structure Profile
Dimensions Vary



EXISTING BRIDGE SECTION
Dimensions Vary

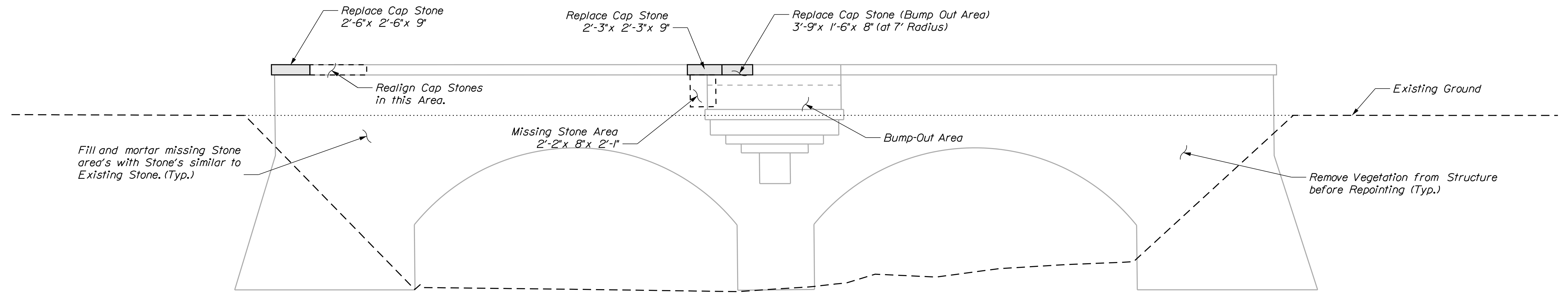


Plan View
Substructure Repair Areas
(Fill and Grout Areas with
Stones Similar to Existing
Stones) (Typ.)

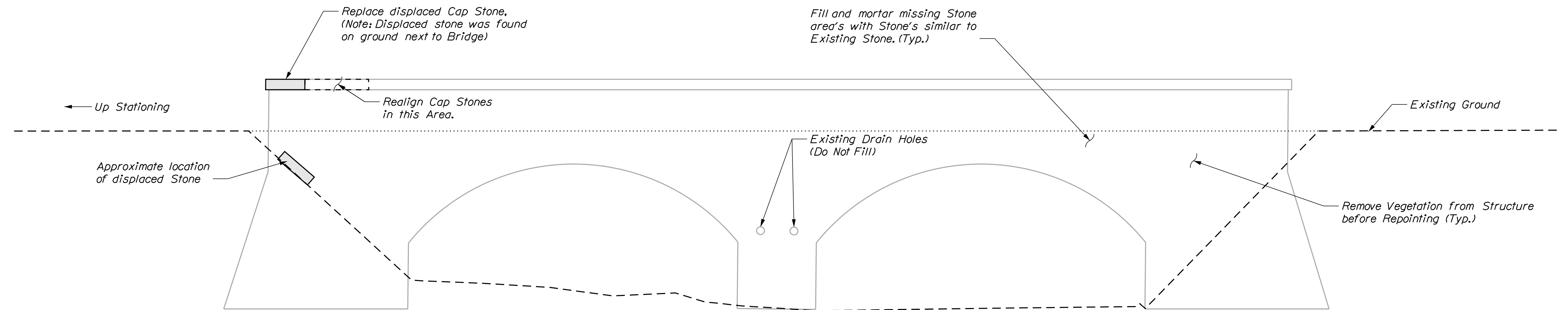
DESIGNED	BY	DATE
CHECKED	BY	DATE
DESIGNED	BY	DATE
REVISIONS 1		
REVISIONS 2		
REVISIONS 3		
REVISIONS 4		
FIELD CHANGES		

PROJ. MANAGER	DEVAN EATON	BY	DATE
DESIGNED	R. NAJOS	BY	DATE
CHECKED	M. CRITCHLOW	BY	DATE
DESIGNED		BY	DATE
REVISIONS 1		BY	DATE
REVISIONS 2		BY	DATE
REVISIONS 3		BY	DATE
REVISIONS 4		BY	DATE
FIELD CHANGES			

VAUGHAN MEMORIAL BRIDGE
VAUGHAN BROOK
HALLOWELL KENNEBEC COUNTY
EXISTING & SUB-STRUCTURE REHAB VIEWS



Structure Profile
South Face Shown



Structure Profile
North Face Shown

STATE OF MAINE
DEPARTMENT OF TRANSPORTATION
02546300
WIN
25463.00
BRIDGE NO. 0490
BRIDGE PLANS

SIGNATURE
P.E. NUMBER
DATE

PROJ. MANAGER	DEVAN EATON	BY	DATE
CHECKED-REVIEWED	R. NAUOUS	M. CRITCHLOW	JUL 2023
DESIGNS-DETAILED			
DESIGNS-DETAILED			
REVISIONS 1			
REVISIONS 2			
REVISIONS 3			
REVISIONS 4			
FIELD CHANGES			

VAUGHAN MEMORIAL BRIDGE
VAUGHAN BROOK
HALLOWELL KENNEBEC COUNTY
BRIDGE STRUCTURE REHAB DETAILS

SHEET NUMBER
5
OF 5