

STATE OF MAINE DEPARTMENT OF TRANSPORTATION



LISBON ANDROSCOGGIN COUNTY ROUTE 196 DRAINAGE IMPROVEMENTS WIN 25389.00 PROJECT LENGTH : 0.19 MILES

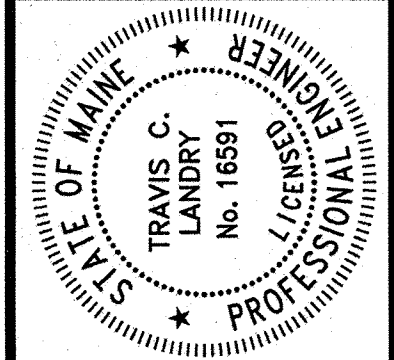
PLAN LEGEND

Town, County, State	-----	Catch Basins	Existing	Proposed
Property Lines	-----	Manholes	Existing	Proposed
R/W Lines-Existing	-----	Proposed Underdrain	-----	
R/W Lines-Proposed	-----	Proposed Ditch	-----	
Culvert-Existing	-----	Existing Ditch	-----	
Culvert Proposed	-----	Utility Poles	Existing	Proposed
Curbing Existing	-----	Fire Hydrants	Existing	Proposed
Curbing Proposed	-----	Existing Water Line	-----	
Type 1	-----	Existing San. Sewer	-----	
Type 3	-----	Existing San. Sewer Manhole	-----	
Type 5	-----	Guardrail-Existing	-----	
Outline of Bodies of Water	-----	Guardrail-Proposed	-----	
Exposed Bedrock	-----	Guardrail-Cable, Other	-----	
Buildings	-----	Centerline-Existing	-----	
Trees Conifer	-----	Centerline-Proposed	-----	
Trees Deciduous	-----	Travelway-Existing	-----	
Tree Line	-----	Travelway-Proposed	-----	
Clearing Limit Line	-----			
Railroad	-----			
Boring	HB-XXX-###	Probe	P-#.##X	
Pavement Core	PC-#			
Test Pit	TP-XXX-###			

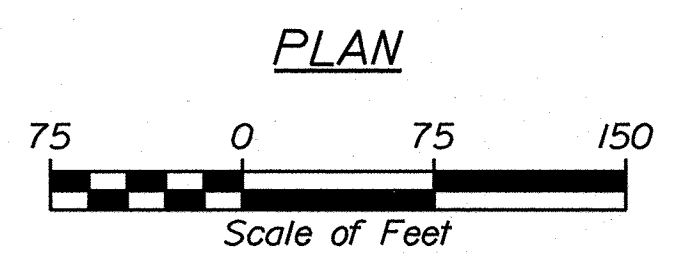
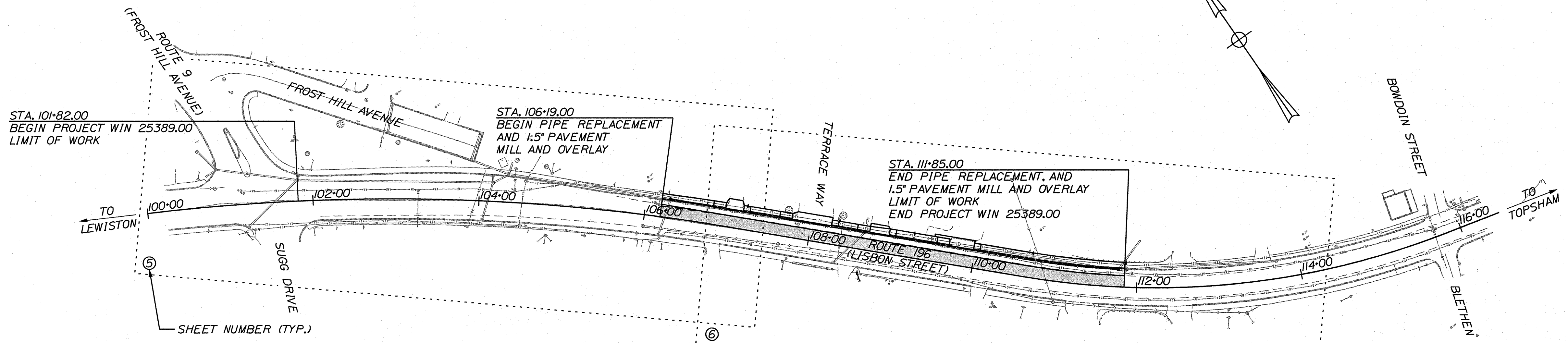
INDEX OF SHEETS

Description	Sheet No.
Title Sheet	1
Typical Sections	2
Construction Notes	3
General Notes	4
Plan/Profile	5-6
Signing and Striping Plan	7
Curbing Plan	8
Cross Sections	9-13

STATE OF MAINE DEPARTMENT OF TRANSPORTATION	APPROVED	DATE
	<i>[Signature]</i>	2-25-26
	ACTING COMMISSIONER	
	CHIEF ENGINEER	

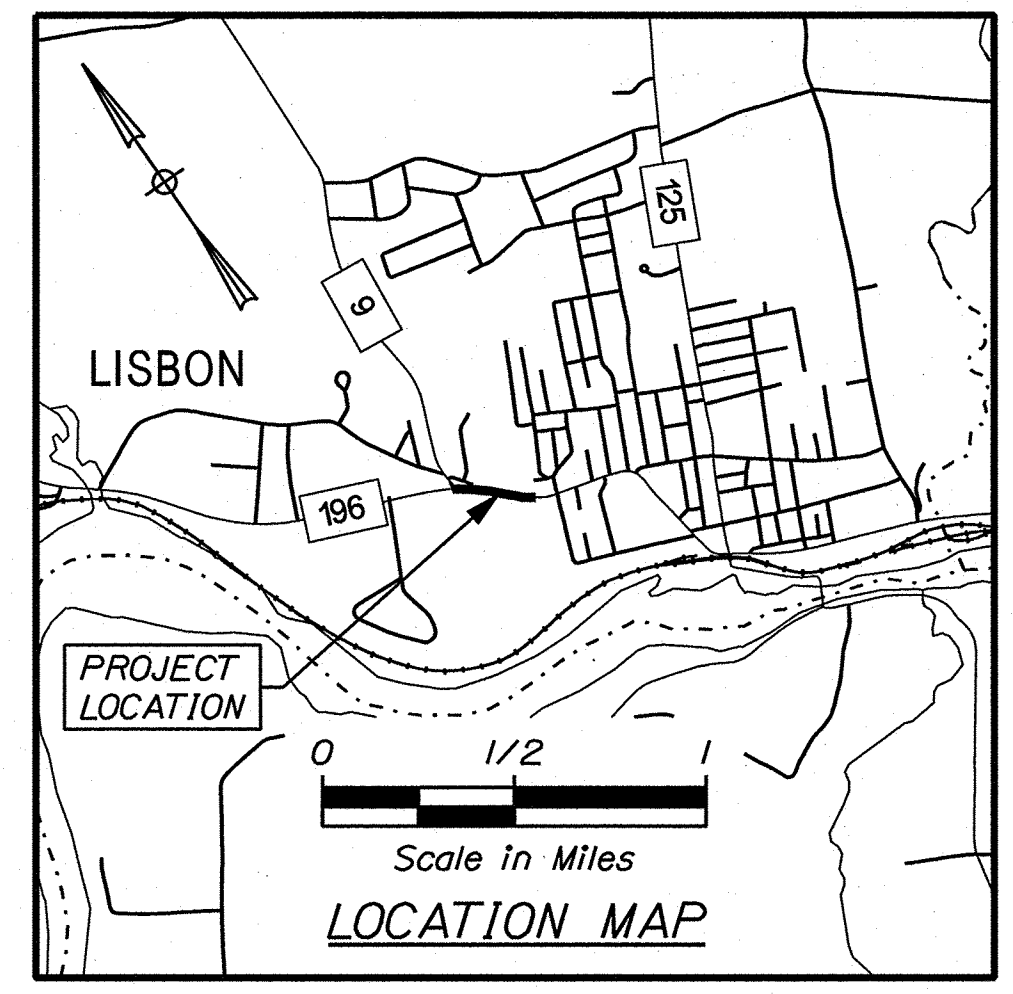


Travis C. Landry	SIGNATURE	16591	P.E. NUMBER	02/06/2026	DATE
	REGIONAL	R. HODGMAN	DESIGNER	T. LANDRY	
	PROJECT MANAGER		CONSULTANT	LJB INC.	
	PROJECT RESIDENT		CONTRACTOR		
	PROJECT COMPLETION DATE				



TRAFFIC DATA

	ROUTE 160 (12/20 YEAR)
Current (2025) AADT	17770
Future (2037/45) AADT	18840/19550
DHV - % of AADT	10%
Design Hourly Volume	1884/1955
% Heavy Trucks (AADT)	3%
% Heavy Trucks (DHV)	1%
Directional Distribution (DHV)	58%
18 kip Equivalent P 2.0	370/397
18 kip Equivalent P 2.5	352/378
Design Speed (mph)	30 MPH
Functional Class	Other Principal Arterial
Corridor Priority	1



PROJECT LOCATION:	The project begins at Route 9 and extends easterly along Route 196 0.25 miles to approximately 200' west of the Bowdoin Street intersection.
PROGRAM AREA:	Regional Program
SCOPE OF WORK:	Drainage Improvements

WIN 25389.00

LISBON DRAINAGE IMPROVEMENTS TITLE SHEET

SHEET NUMBER

1

OF 13

GORRILL PALMER
An LJB Engineering Company

Gorill Palmer, an LJB Engineering Company
GorillPalmer.com
(207) 772-2515
300 Southborough Drive - Suite 200
South Portland, ME 04106

Date:06-Feb-26

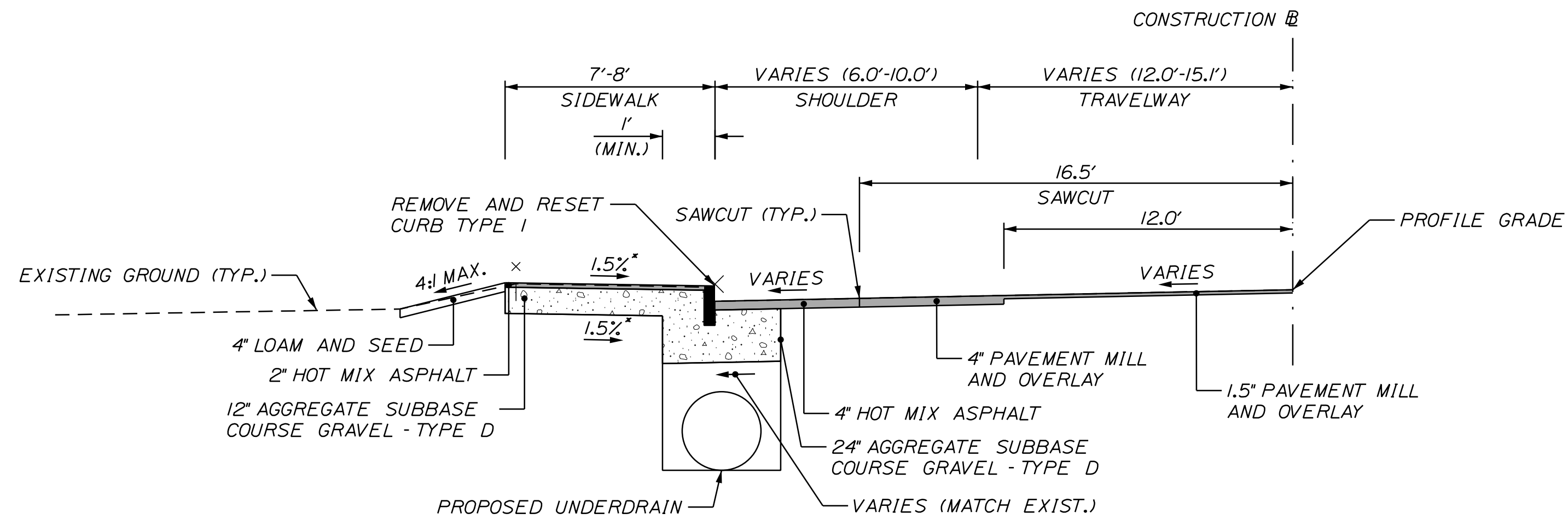
Username: Jacob.Curtis

Division: HIGHWAY

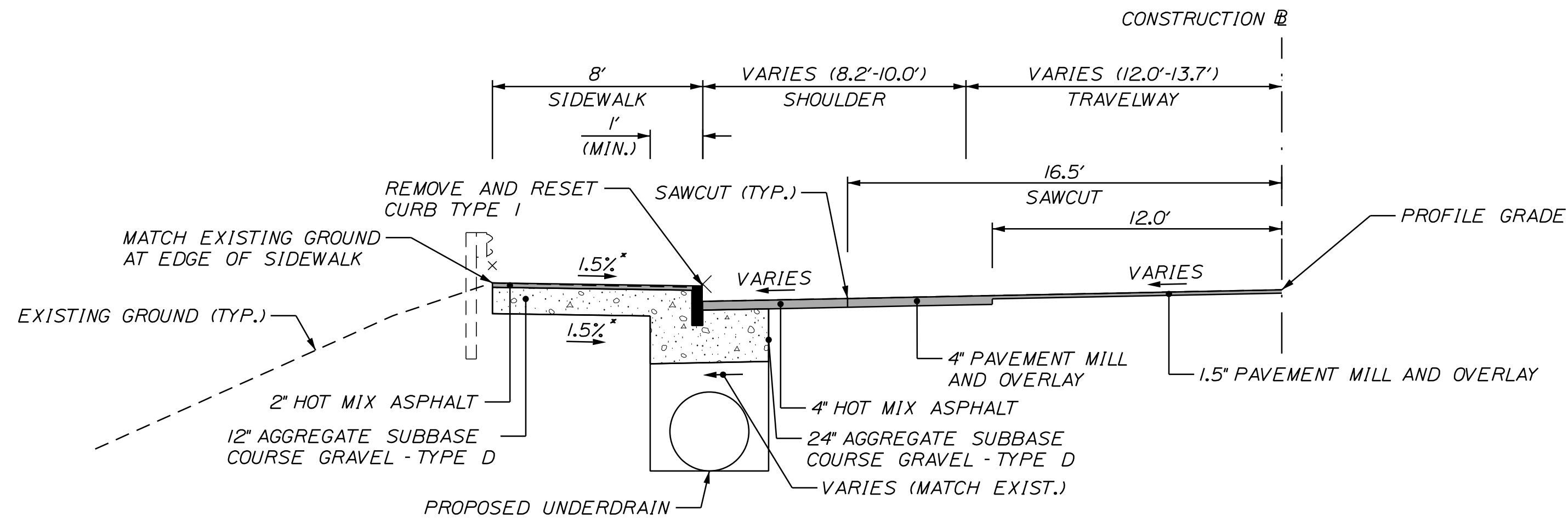
Filename: ...\\00\Highway\001_Title.dgn

U:\Maine Department of Transportation\4027_Lisbon Drainage.Z - CAD\00\Highway\001_Title.dgn

SHLD. = SHOULDER



ROUTE 196 (LISBON STREET)
TYPICAL SECTION
 * SEE NOTE 1
 STA. 106+19 TO STA. 111+50, LT.



ROUTE 196 (LISBON STREET)
TYPICAL SECTION
 * SEE NOTE 1
 STA. 111+50 TO STA. 111+79

NOTES:

1. SIDEWALK AND PEDESTRIAN RAMP CROSS SLOPES MAY VARY BETWEEN 2.0% MAXIMUM AND 0.5% MINIMUM.
2. THE PAVEMENT AND SUBBASE DEPTHS SHOWN ON THE PLANS ARE INTENDED TO BE NOMINAL.
3. WHEN SUPERELEVATION EXCEEDS THE SLOPE OF THE LOW SIDE SHOULDER, THE LOW SIDE SHOULDER SHALL HAVE THE SAME SLOPE AS THE TRAVELWAY UNLESS OTHERWISE NOTED ON THE CROSS SECTIONS OR DIRECTED BY THE RESIDENT.
4. CROSS SLOPES FOR BOTH NORMAL AND SUPERELEVATED SECTIONS FOR ALL COURSES OF SUBBASE AND PAVEMENT SHALL BE STRAIGHT.
5. THE STATIONING UNDER EACH TYPICAL IS APPROXIMATE.
6. PAVEMENT AND GRAVEL DEPTH WITHIN PROPOSED CROSS TRENCH AREAS SHALL MATCH THE TYPICAL SECTIONS OR SHALL MATCH THE EXISTING PAVEMENT AND GRAVEL DEPTH, WHICHEVER IS GREATER.
7. SAWCUT LOCATIONS VARY. SEE PLAN AND CROSS SECTIONS FOR ADDITIONAL INFORMATION.
8. PROPOSED UNDERDRAIN SHOWN ON THE TYPICAL SECTIONS VARIES IN SIZE AND DEPTH. SEE PLANS AND CROSS SECTIONS FOR ADDITIONAL INFORMATION.

Date: 19-Feb-26

Username: Jacob.Curtis

Division: HIGHWAY

Filename: ... \00\Highway\002_Typical01.dgn

U:\Maine Department of Transportation\4027_Lisbon Drainage\Z - CAD\00\Highway\002_Typical01.dgn

NOT TO SCALE

STATE OF MAINE
 DEPARTMENT OF TRANSPORTATION

PROJ. MANAGER	R. HODDGMAN	BY	DATE
DESIGN DETAILED	TCL	JMC	02/26
CHECKED-REVIEWED	TCL	DGE	02/26
DESIGN DETAILED			
REVISIONS 1			
REVISIONS 2			
REVISIONS 3			
REVISIONS 4			
FIELD CHANGES			

LISBON
 DRAINAGE IMPROVEMENTS

TYPICAL SECTIONS

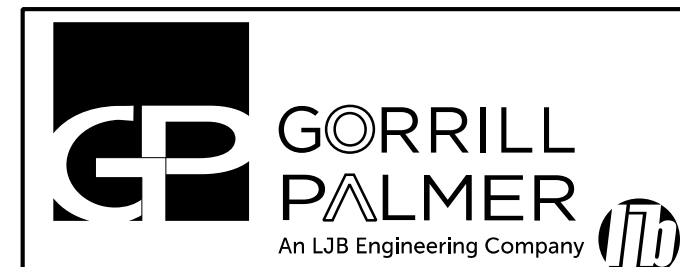
SHEET NUMBER

2

OF 13

WIN
 25389.00

HIGHWAY PLANS



Gorrill Palmer, an LJB Engineering Company
 GorrillPalmer.com
 (207) 772-2515
 300 Southborough Drive - Suite 200
 South Portland, ME 04106

DRIVEWAYS AND ENTRANCES

STATION	DESCRIPTION	OPENING
107+07 LT.	RESIDENTIAL PAVED ENTRANCE	22 FT
108+05 LT.	TERRACE WAY	49 FT
108+82 LT.	RESIDENTIAL GRAVEL ENTRANCE	24 FT
109+83 LT.	RESIDENTIAL GRAVEL ENTRANCE	30 FT

ITEM 202.15 - REMOVING EXISTING MANHOLE OR CATCH BASIN

LOCATION
STA. 108+65.10, 20.83' LT.

ITEM 509.201 UV CURED IN PLACE PIPE LINER

LOCATION	LENGTH	
MH1 TO MH2	234.1 LF	(30" CMP)
CB1 TO MH2	46.4 LF	(24" CMP)
MH3 TO MH4	195.1 LF	(36" CMP)

ITEM 604.097 - 72 INCH CATCH BASIN TYPE B1-C EA

STATION
108+65.10, 20.88' LT. (CB2) 1.000 (FLAT TOP)

ITEM 604.166 - REBUILDING MANHOLE EA

STATION
106+28.94, 22.78' LT. (MH4) 1 (FLAT TOP)

ITEM 604.18 - ADJUSTING MANHOLE OR CATCH BASIN TO GRADE EA

STATION
111+77.34, 20.81' LT. (CB3) 1

ITEM 605.18 36" UNDERDRAIN TYPE C

LOCATION	LENGTH
MH4 TO CB2	232.3 LF
CB2 TO CB3	305.3 LF

ITEM 626.421 - 24-INCH DIAMETER FOUNDATION

LOCATION LENGTH
STA. 109+10.99, 24.73' LT. 7 LF

ITEM 643.6005 - SOLAR POWERED SCHOOL ZONE BEACON REMOVE AND RESET EA

LOCATION
STA. 109+10.99, 24.73' LT. 1

STATE OF MAINE
DEPARTMENT OF TRANSPORTATION

WIN
25385.00
HIGHWAY PLANS

PROJ. MANAGER	R. HODDGMAN	BY	DATE	SIGNATURE	P.E. NUMBER	DATE
DESIGN-DETAILED	TCL	JMC	02/26			
CHECKED-REVIEWED	TCL	DGE	02/26			
DESIGN-DETAILED						
REVISIONS 1						
REVISIONS 2						
REVISIONS 3						
REVISIONS 4						
FIELD CHANGES						

LISBON
DRAINAGE IMPROVEMENTS
CONSTRUCTION NOTES

SHEET NUMBER

3

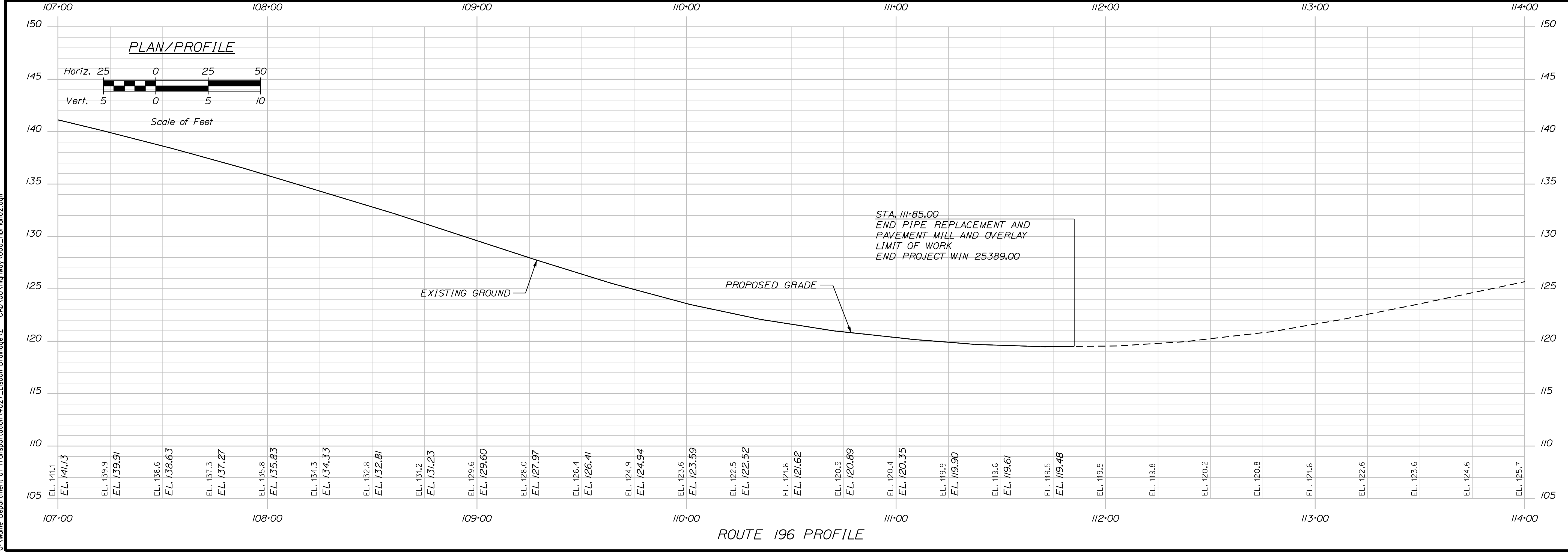
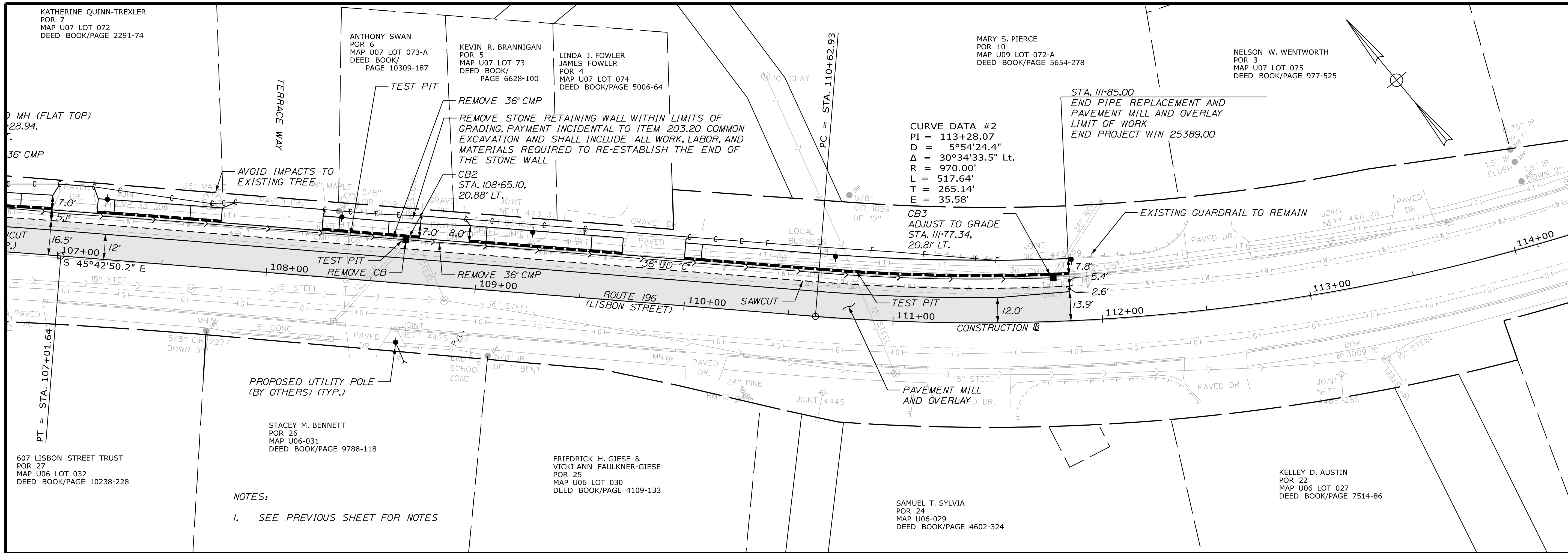
OF 13



GORRILL PALMER
An LJB Engineering Company

Gorrill Palmer, an LJB Engineering Company
GorrillPalmer.com
(207) 772-2515
300 Southborough Drive - Suite 200
South Portland, ME 04106

U:\Maine Department of Transportation\4027_Lisbon Drainage\Z - CAD\00_Highway\006_HDPlan\02.dgn
 Division: HIGHWAY
 Username: Jacob.Curtis
 Date: 19-Feb-26



STATE OF MAINE
DEPARTMENT OF TRANSPORTATION

LIBSON DRAINAGE IMPROVEMENTS
PLAN/PROFILE

PROJ. MANAGER	BY	DATE
R. HODDGMAN	JMC	02/26
	DCE	02/26

DESIGN DETAILED	CHECKED-REVIEWED	DESIGN DETAILED	REVISIONS 1	REVISIONS 2	REVISIONS 3	REVISIONS 4	FIELD CHANGES
TCL	TCL						

SHEET NUMBER
6
 OF 13

WIN
25389.00
 HIGHWAY PLANS

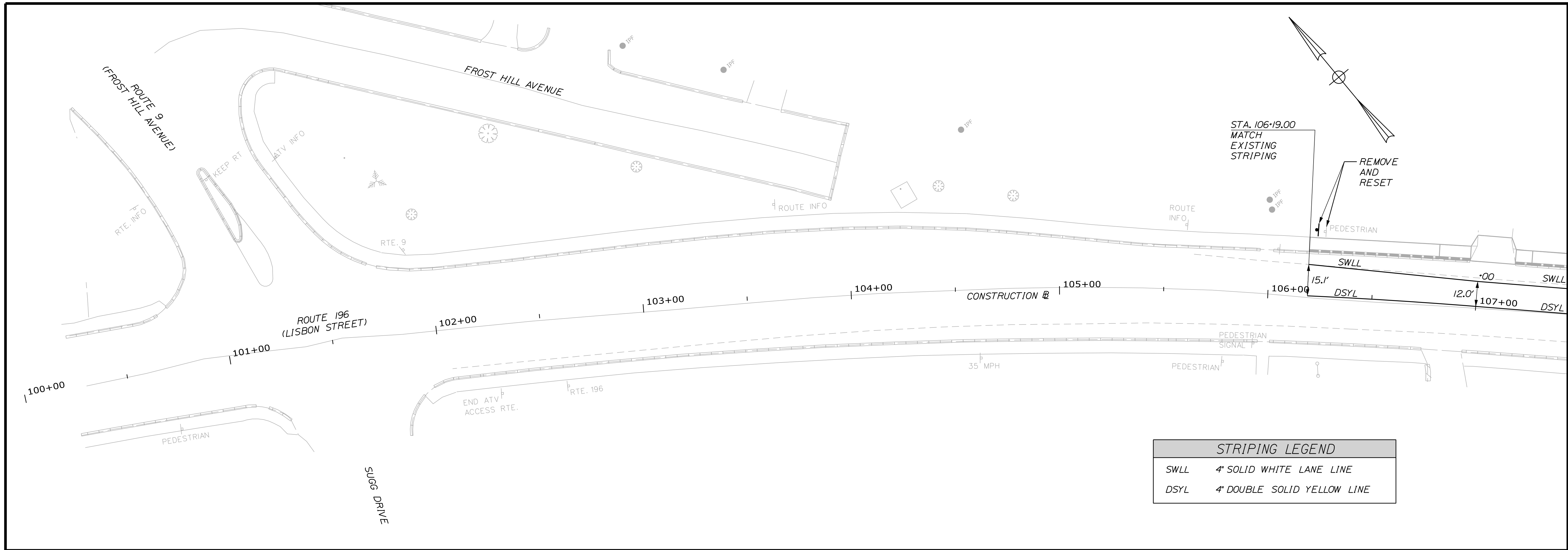
Date: 19-Feb-26

Username: Jacob.Curtis

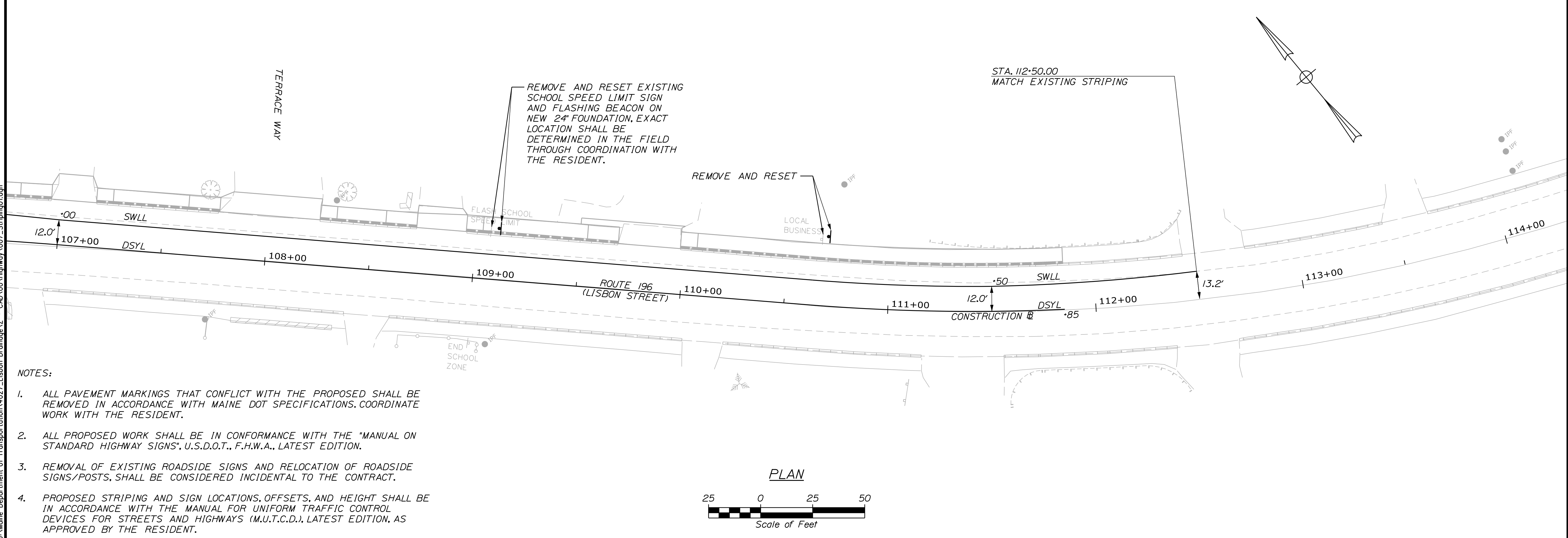
Division: HIGHWAY

Filename: ... \000\Highway\007_Striping01.dgn

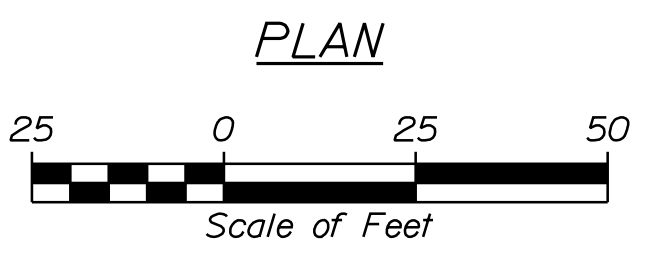
U:\Maine Department of Transportation\4027_Lisbon Drainage.Z - CAD\000\Highway\007_Striping01.dgn



STRIPING LEGEND	
SWLL	4" SOLID WHITE LANE LINE
DSYL	4" DOUBLE SOLID YELLOW LINE



- NOTES:
- ALL PAVEMENT MARKINGS THAT CONFLICT WITH THE PROPOSED SHALL BE REMOVED IN ACCORDANCE WITH MAINE DOT SPECIFICATIONS. COORDINATE WORK WITH THE RESIDENT.
 - ALL PROPOSED WORK SHALL BE IN CONFORMANCE WITH THE "MANUAL ON STANDARD HIGHWAY SIGNS", U.S.D.O.T., F.H.W.A., LATEST EDITION.
 - REMOVAL OF EXISTING ROADSIDE SIGNS AND RELOCATION OF ROADSIDE SIGNS/POSTS, SHALL BE CONSIDERED INCIDENTAL TO THE CONTRACT.
 - PROPOSED STRIPING AND SIGN LOCATIONS, OFFSETS, AND HEIGHT SHALL BE IN ACCORDANCE WITH THE MANUAL FOR UNIFORM TRAFFIC CONTROL DEVICES FOR STREETS AND HIGHWAYS (M.U.T.C.D.), LATEST EDITION, AS APPROVED BY THE RESIDENT.



STATE OF MAINE
DEPARTMENT OF TRANSPORTATION

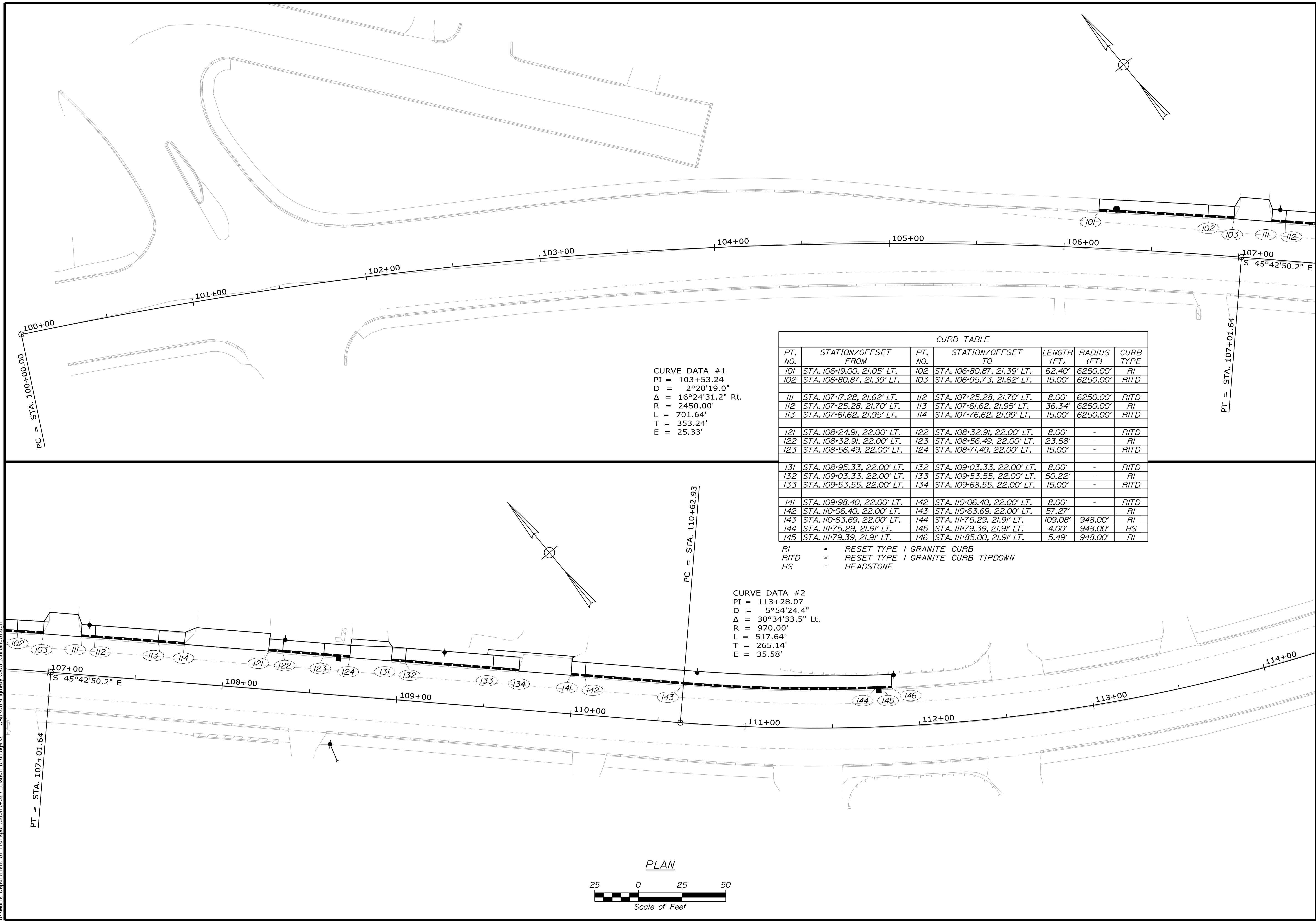
DESIGN DETAILED	DATE	BY	R. HODDGMAN	DATE
CHECKED-REVIEWED	02/26	JMC	TCL	02/26
DESIGNS DETAILED		DCE	TCL	
DESIGNS DETAILED				
REVISIONS 1				
REVISIONS 2				
REVISIONS 3				
REVISIONS 4				
FIELD CHANGES				

SIGNATURE	P.E. NUMBER	DATE

LISBON
DRAINAGE IMPROVEMENTS
SIGNING AND STRIPING PLAN

SHEET NUMBER
7
OF 13

WIN
253895.00
HIGHWAY PLANS

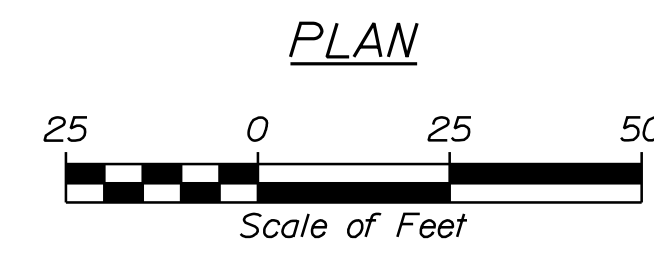


CURVE DATA #1
 PI = 103+53.24
 D = 2°20'19.0"
 Δ = 16°24'31.2" Rt.
 R = 2450.00'
 L = 701.64'
 T = 353.24'
 E = 25.33'

CURVE DATA #2
 PI = 113+28.07
 D = 5°54'24.4"
 Δ = 30°34'33.5" Lt.
 R = 970.00'
 L = 517.64'
 T = 265.14'
 E = 35.58'

CURB TABLE						
PT. NO.	STATION/OFFSET FROM	PT. NO.	STATION/OFFSET TO	LENGTH (FT)	RADIUS (FT)	CURB TYPE
101	STA. 106+19.00, 21.05' LT.	102	STA. 106+80.87, 21.39' LT.	62.40'	6250.00'	RI
102	STA. 106+80.87, 21.39' LT.	103	STA. 106+95.73, 21.62' LT.	15.00'	6250.00'	RITD
111	STA. 107+17.28, 21.62' LT.	112	STA. 107+25.28, 21.70' LT.	8.00'	6250.00'	RITD
112	STA. 107+25.28, 21.70' LT.	113	STA. 107+61.62, 21.95' LT.	36.34'	6250.00'	RI
113	STA. 107+61.62, 21.95' LT.	114	STA. 107+76.62, 21.99' LT.	15.00'	6250.00'	RITD
121	STA. 108+24.91, 22.00' LT.	122	STA. 108+32.91, 22.00' LT.	8.00'	-	RITD
122	STA. 108+32.91, 22.00' LT.	123	STA. 108+56.49, 22.00' LT.	23.58'	-	RI
123	STA. 108+56.49, 22.00' LT.	124	STA. 108+71.49, 22.00' LT.	15.00'	-	RITD
131	STA. 108+95.33, 22.00' LT.	132	STA. 109+03.33, 22.00' LT.	8.00'	-	RITD
132	STA. 109+03.33, 22.00' LT.	133	STA. 109+53.55, 22.00' LT.	50.22'	-	RI
133	STA. 109+53.55, 22.00' LT.	134	STA. 109+68.55, 22.00' LT.	15.00'	-	RITD
141	STA. 109+98.40, 22.00' LT.	142	STA. 110+06.40, 22.00' LT.	8.00'	-	RITD
142	STA. 110+06.40, 22.00' LT.	143	STA. 110+63.69, 22.00' LT.	57.27'	-	RI
143	STA. 110+63.69, 22.00' LT.	144	STA. 111+75.29, 21.91' LT.	109.08'	948.00'	RI
144	STA. 111+75.29, 21.91' LT.	145	STA. 111+79.39, 21.91' LT.	4.00'	948.00'	HS
145	STA. 111+79.39, 21.91' LT.	146	STA. 111+85.00, 21.91' LT.	5.49'	948.00'	RI

RI = RESET TYPE I GRANITE CURB
 RITD = RESET TYPE I GRANITE CURB TIPDOWN
 HS = HEADSTONE

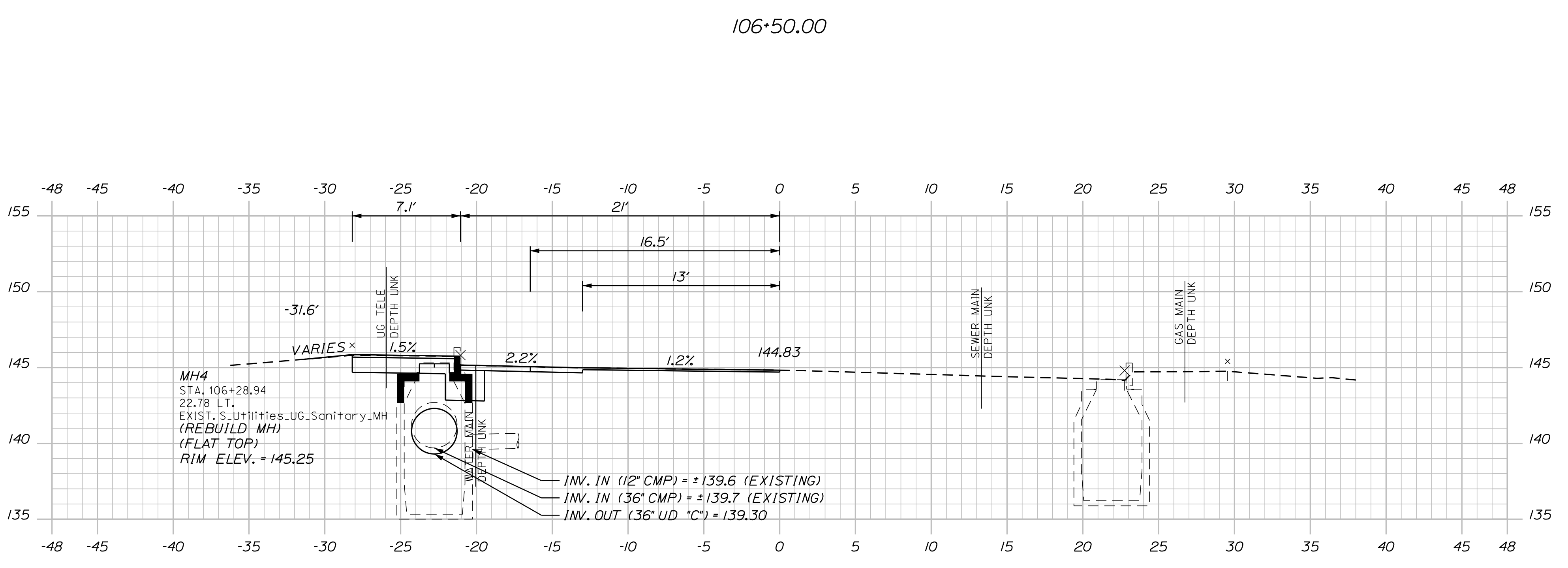
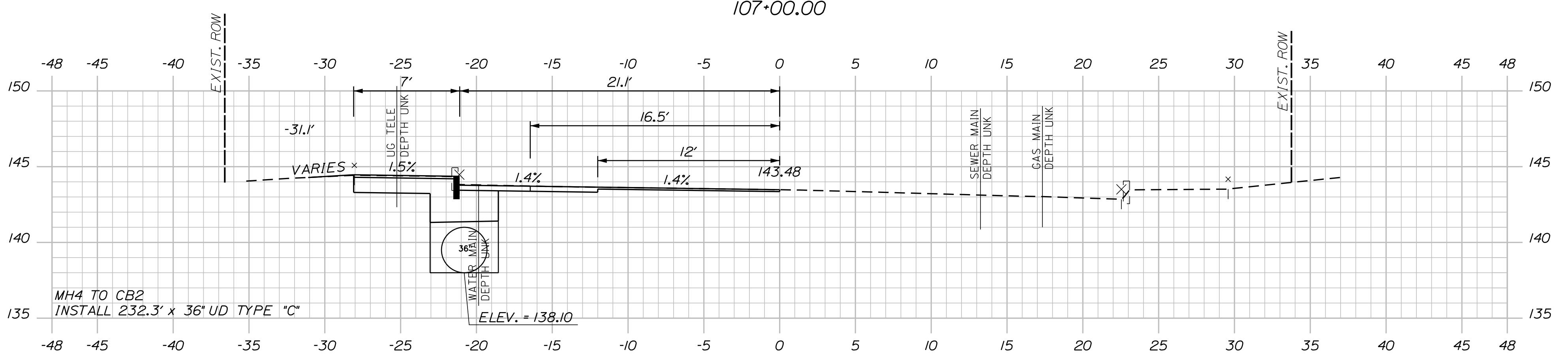
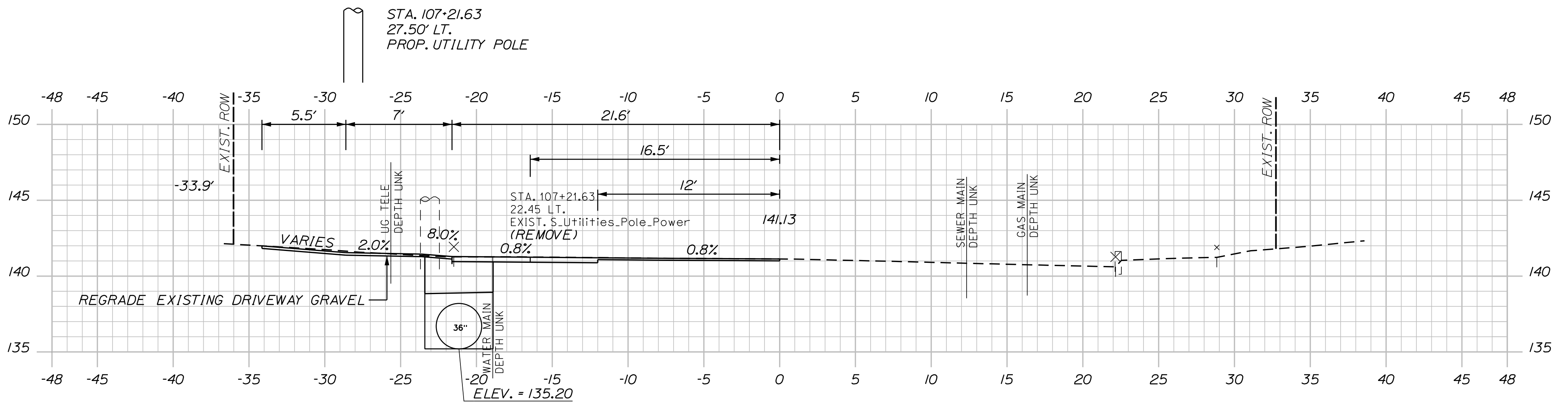


DESIGN-DETAILED	CHECKED-REVIEWED	DESIGN-DETAILED	REVISIONS 1	REVISIONS 2	REVISIONS 3	REVISIONS 4	FIELD CHANGES
TCL	TCL	-	-	-	-	-	-

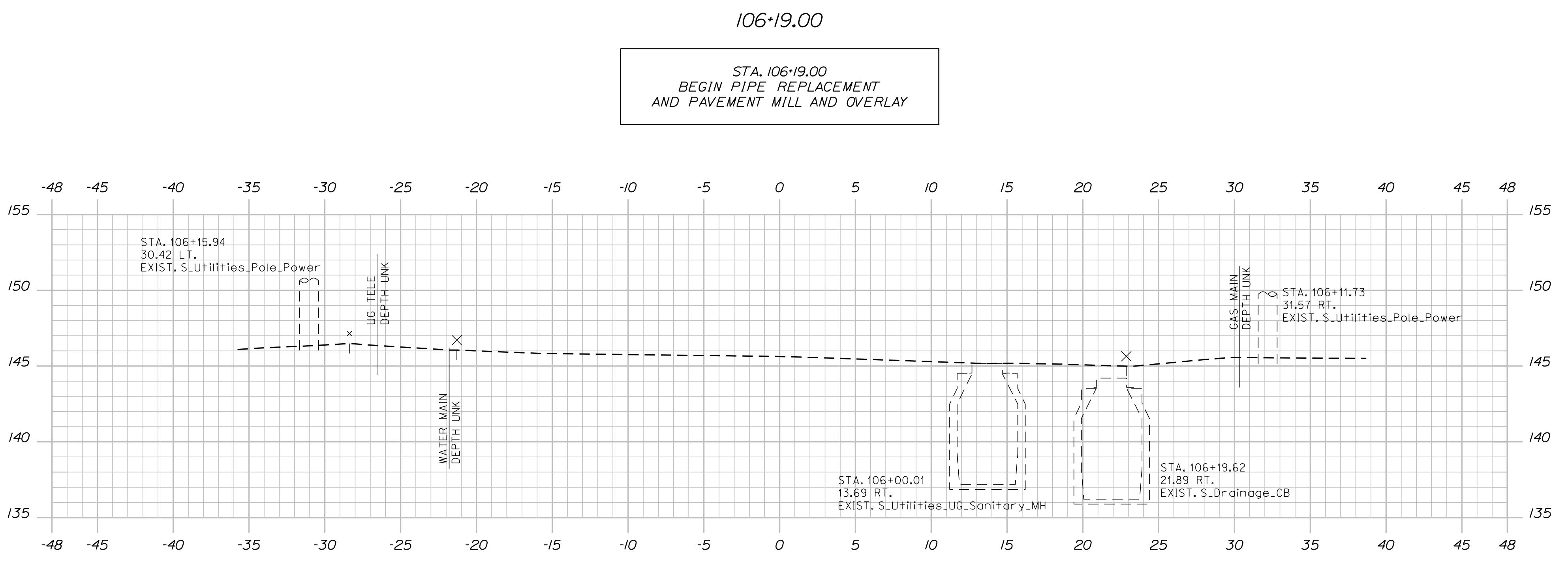
PROJ. MANAGER	R. HODDGMAN	BY	DATE
TCL	TCL	JMC	02/26
-	-	DCE	02/26

LISBON
 DRAINAGE IMPROVEMENTS
 CURBING PLAN

U:\Maine Department of Transportation\4027_Lisbon Drainage\Z - CAD\00\Highway\Xsect.dgn



STA. 106+19.00
BEGIN PIPE REPLACEMENT
AND PAVEMENT MILL AND OVERLAY

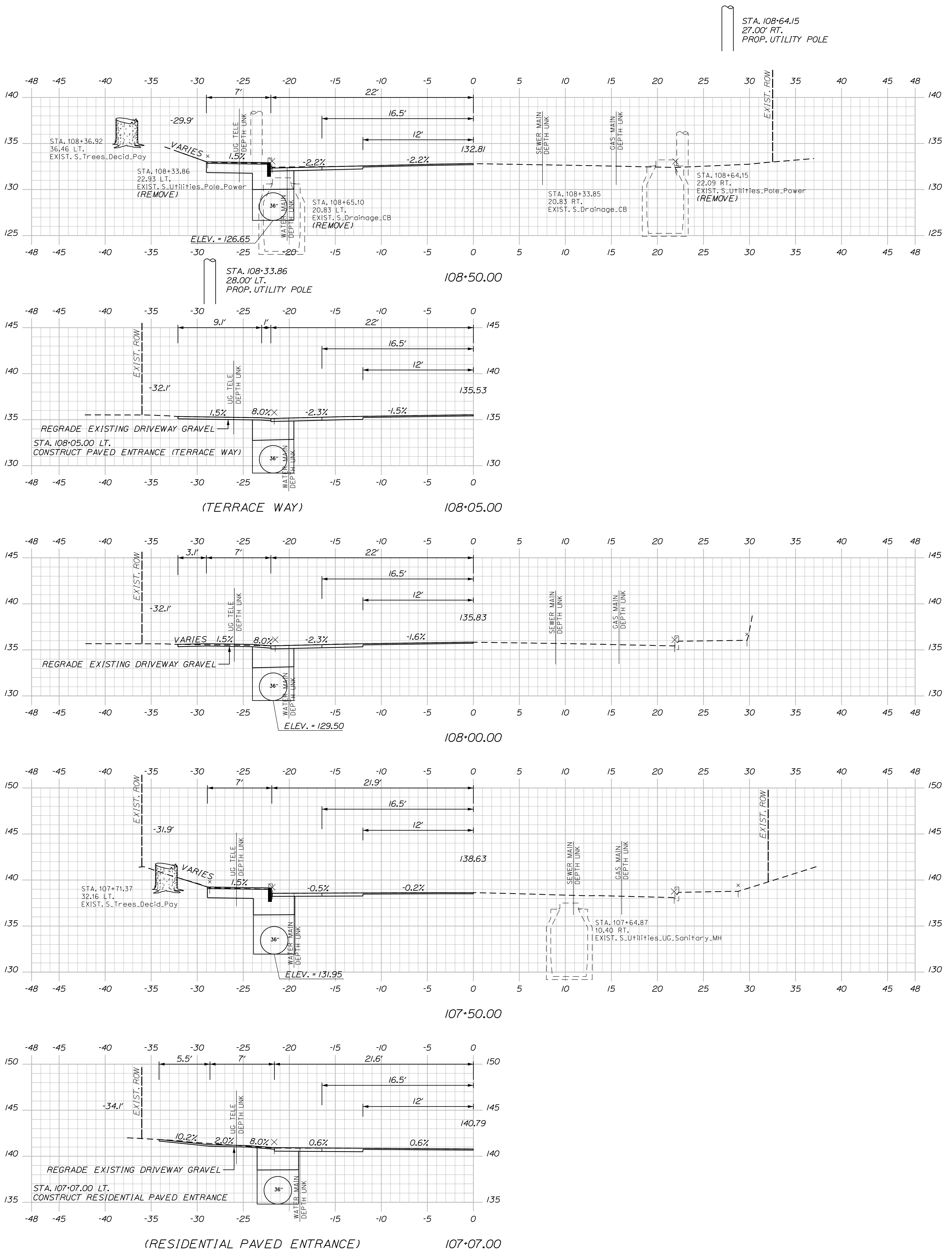


STA. 101+82.00
BEGIN PROJECT WIN 25389.00
LIMIT OF WORK

Sta. 105+00.00 to Sta. 107+00.00

OF 13 9 SHEET NUMBER	LISBON DRAINAGE IMPROVEMENTS	PROJ. MANAGER R. HODGMAN DESIGN-DETAILED TCL JMC 02\26 CHECKED-REVIEWED TCL DGE 02\26 DESIGN2-DETAILED2 - - - DESIGN3-DETAILED3 - - - REVISIONS 1 - - - REVISIONS 2 - - - REVISIONS 3 - - - REVISIONS 4 - - - FIELD CHANGES - - -	BY DATE JMC 02\26 DGE 02\26 - - - - - - - - - - - - - - - - - -	SIGNATURE _____ P.E. NUMBER _____ DATE _____	STATE OF MAINE DEPARTMENT OF TRANSPORTATION	
	CROSS SECTIONS				WIN 25389.00	
						HIGHWAY PLANS

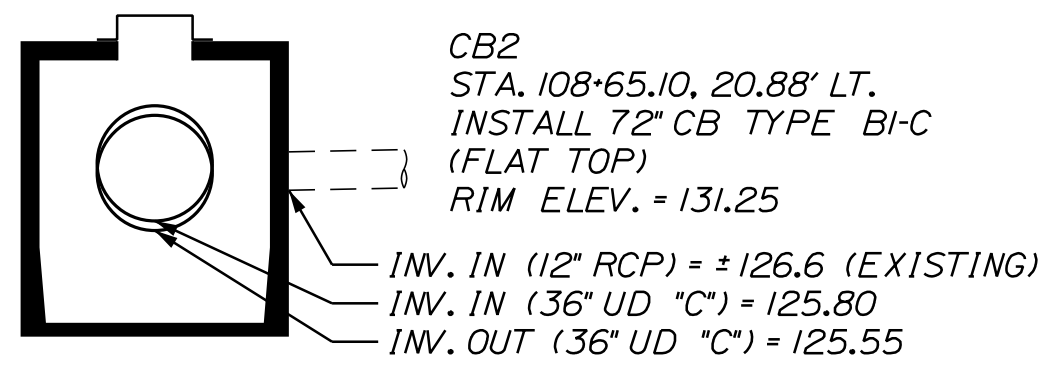
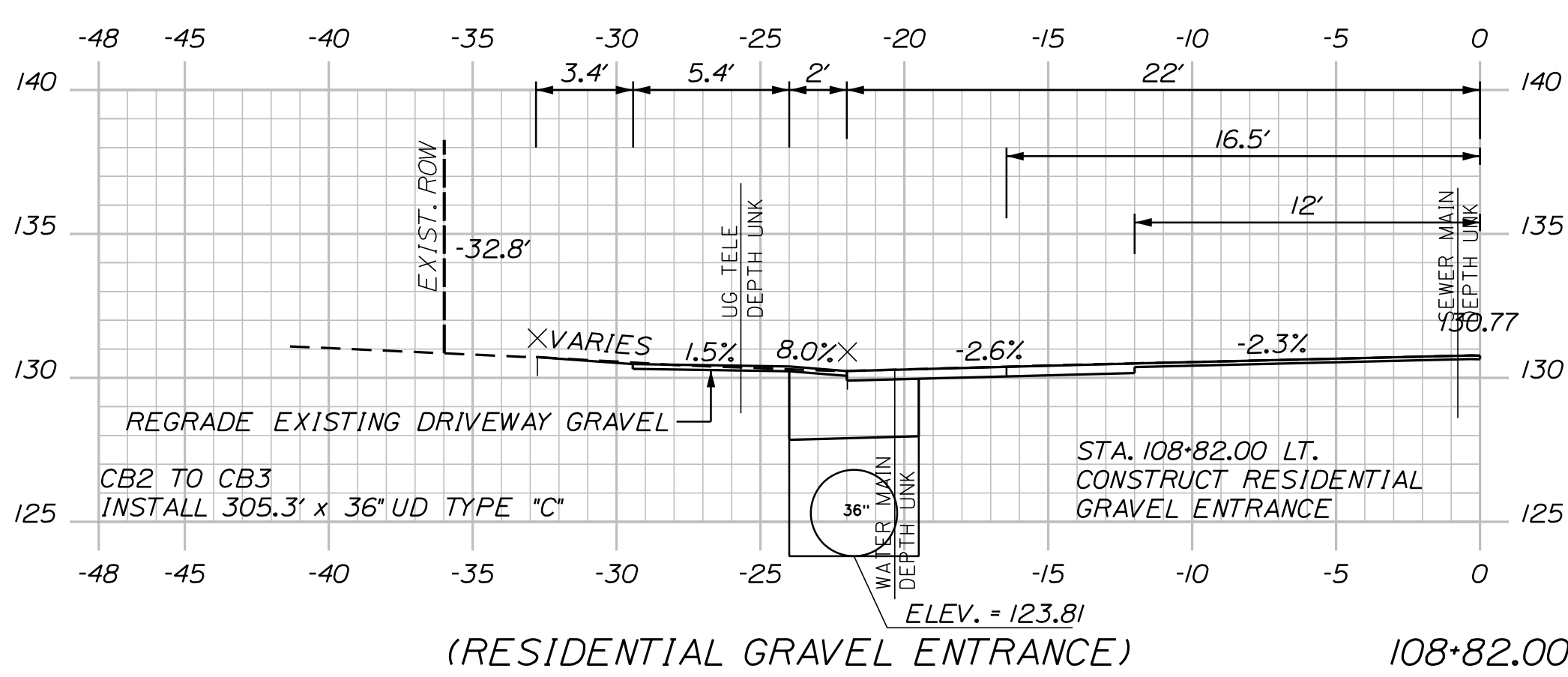
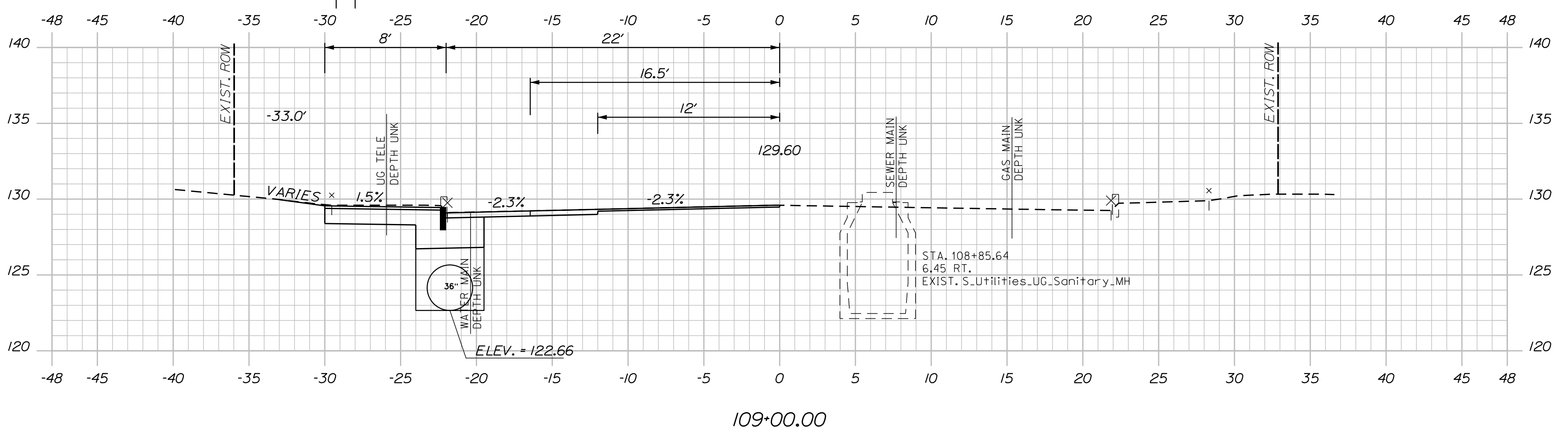
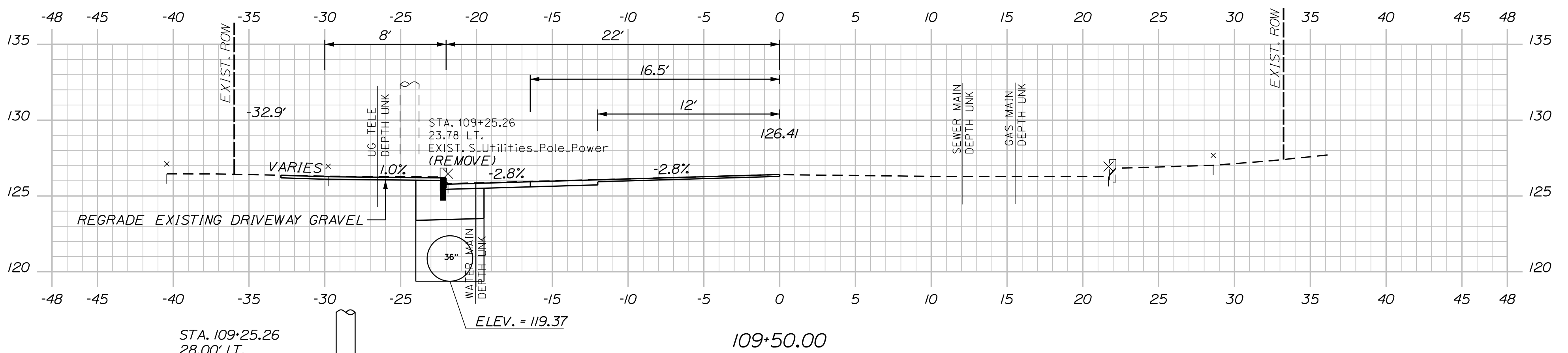
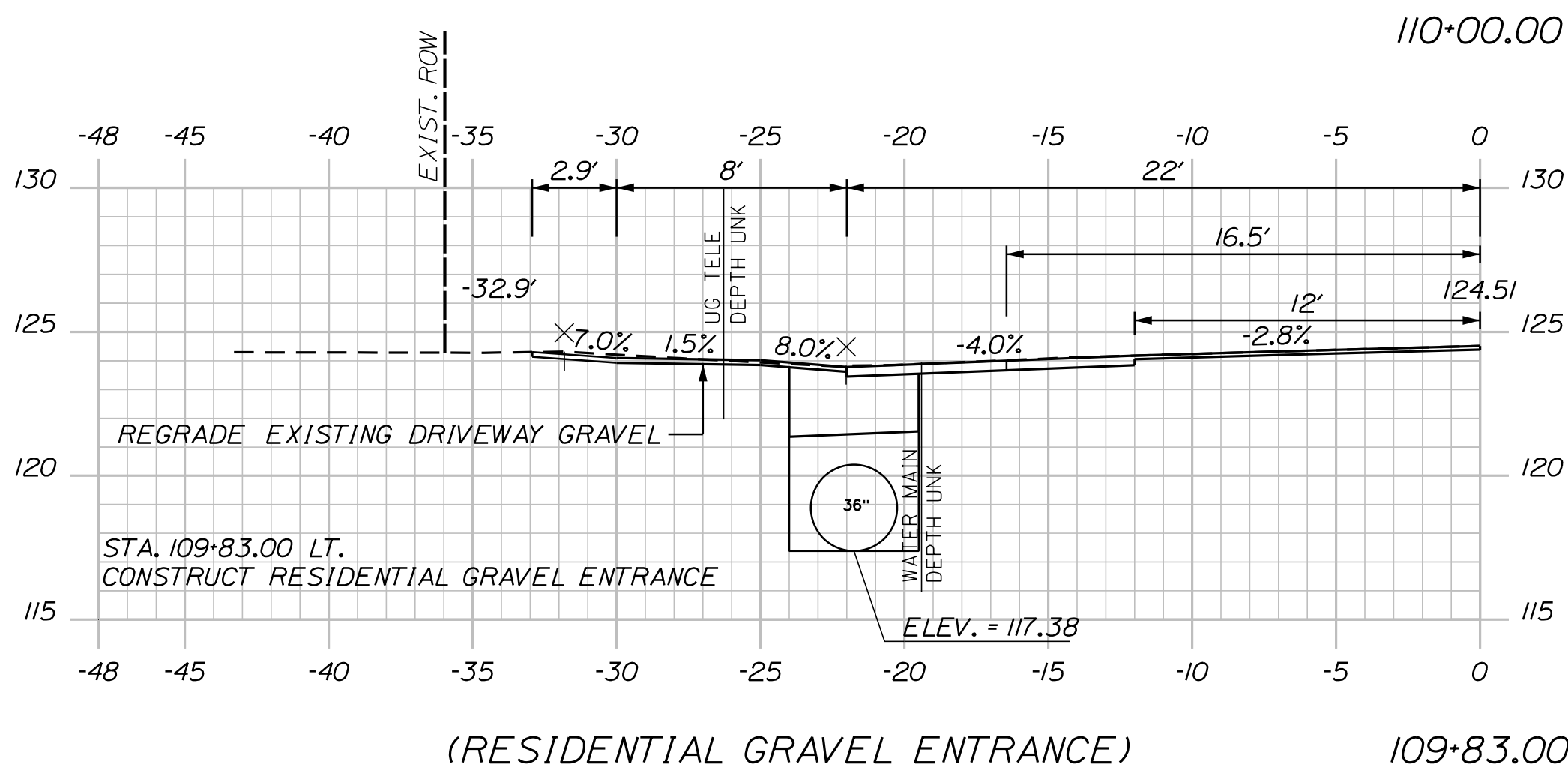
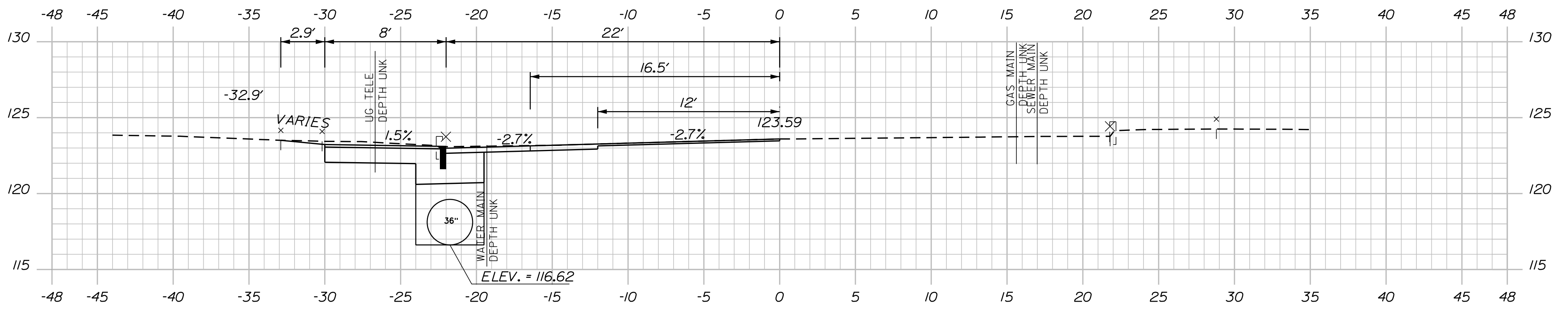
U:\Maine Department of Transportation\4027_Lisbon Drainage\Z - CAD\00\Highway\Xsect.dgn



Sta. 107+07.00 to Sta. 108+50.00

SHEET NUMBER 10 OF 13	LISBON DRAINAGE IMPROVEMENTS CROSS SECTIONS			PROJ. MANAGER R. HODGMAN DESIGN-DETAILED TCL JMC 02\26 CHECKED-REVIEWED TCL DGE 02\26 DESIGN2-DETAILED2 DESIGN3-DETAILED3 REVISIONS 1 REVISIONS 2 REVISIONS 3 REVISIONS 4 FIELD CHANGES	BY DATE DATE DATE DATE DATE	SIGNATURE P.E. NUMBER DATE	STATE OF MAINE DEPARTMENT OF TRANSPORTATION WIN 25389.00 HIGHWAY PLANS
------------------------------------	--	--	--	--	--	----------------------------------	--

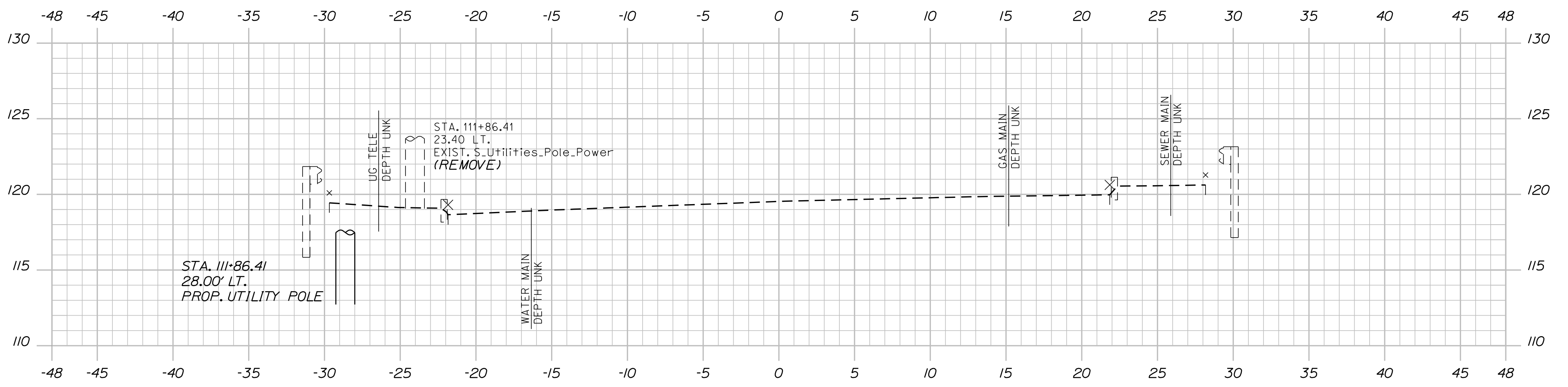
U:\Maine Department of Transportation\4027_Lisbon Drainage\Z - CAD\00\Highway\Xsect.dgn



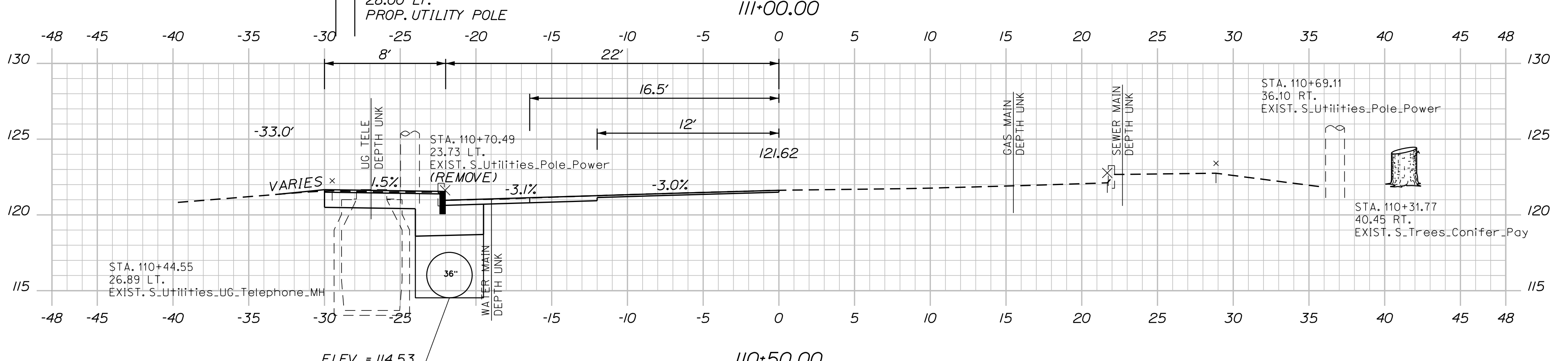
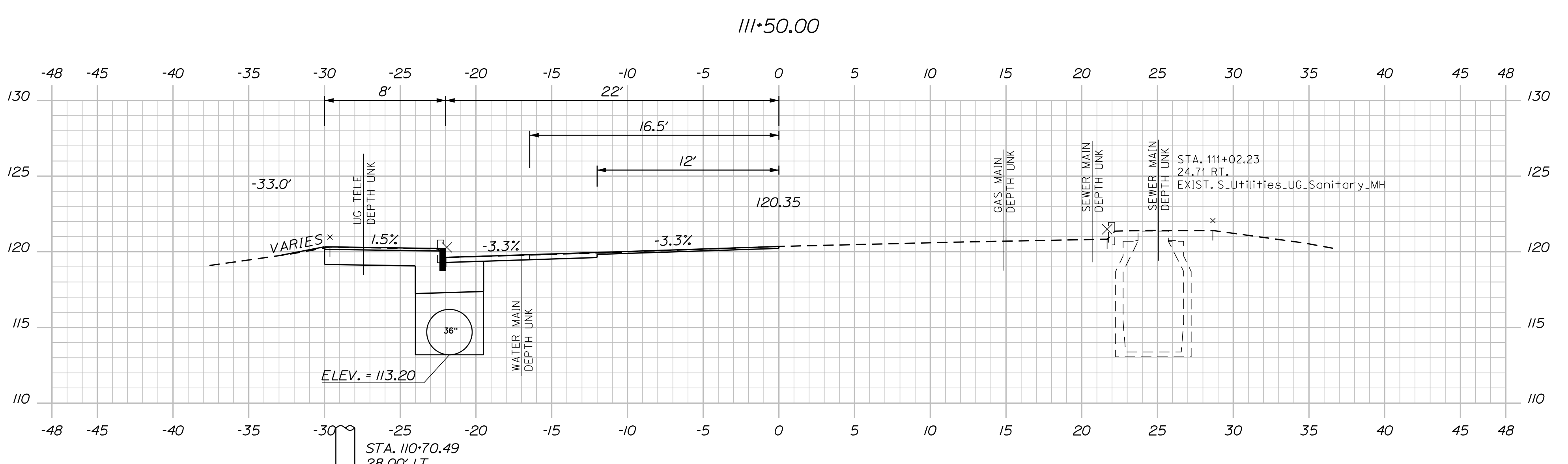
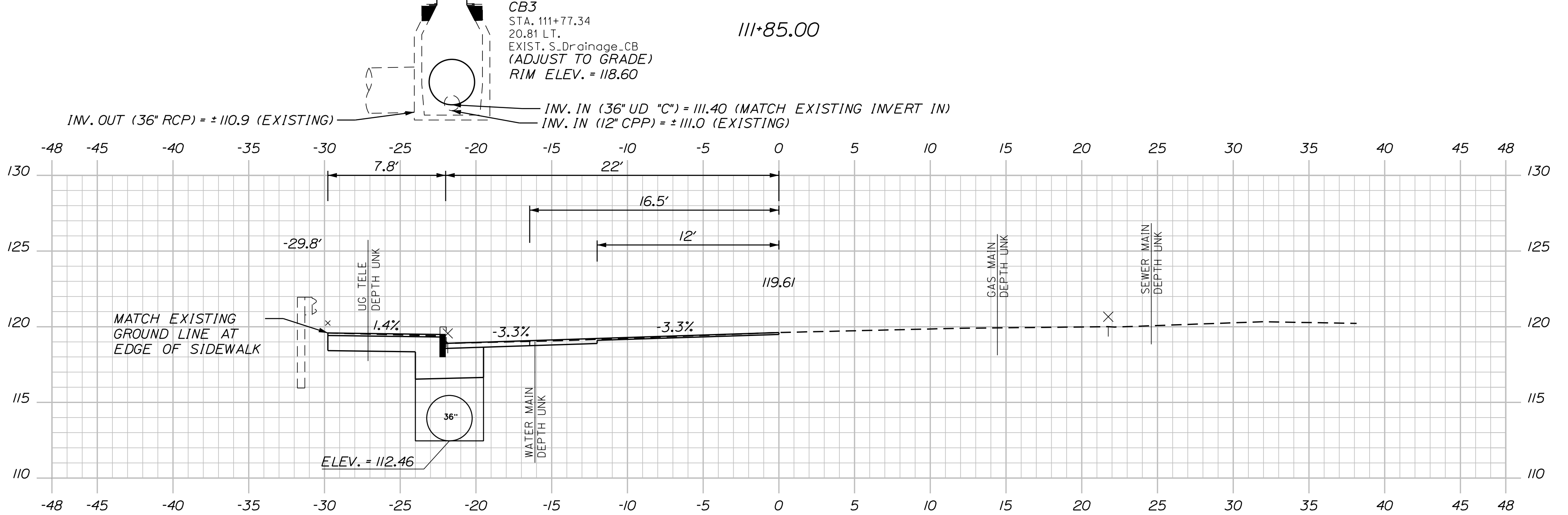
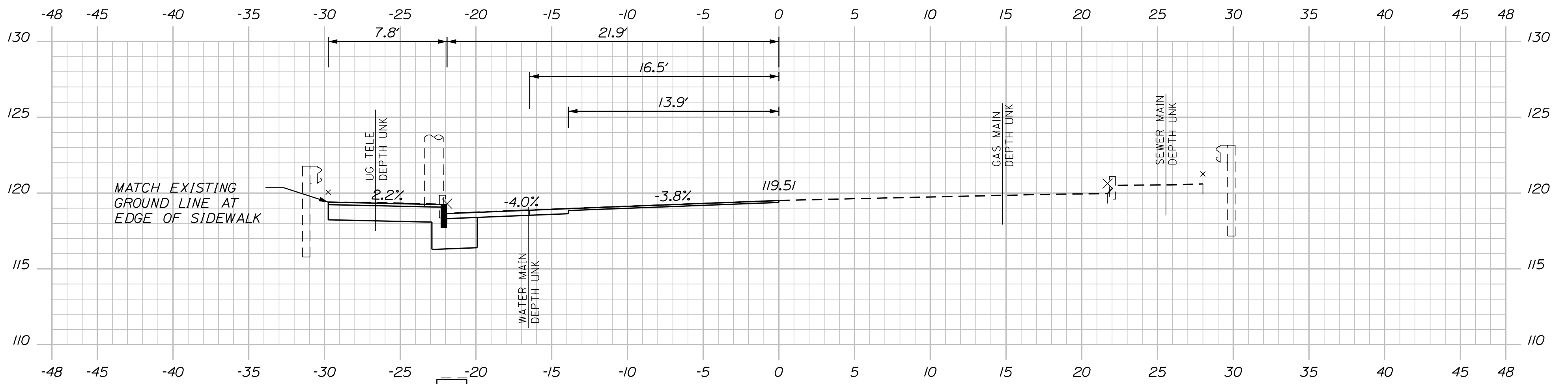
Sta. 108+82.00 to Sta. 110+00.00

OF 13 11 SHEET NUMBER	LISBON DRAINAGE IMPROVEMENTS	PROJ. MANAGER R. HODGMAN DESIGN-DETAILED TCL JMC 02\26 CHECKED-REVIEWED TCL DGE 02\26 DESIGN2-DETAILED2 - - - DESIGN3-DETAILED3 - - - REVISIONS 1 - - - REVISIONS 2 - - - REVISIONS 3 - - - REVISIONS 4 - - - FIELD CHANGES - - -	BY DATE SIGNATURE P.E. NUMBER DATE	STATE OF MAINE DEPARTMENT OF TRANSPORTATION	
	CROSS SECTIONS			WIN 25389.00 HIGHWAY PLANS	

U:\Maine Department of Transportation\4027_Lisbon Drainage\Z - CAD\00\Highway\Xsect.dgn



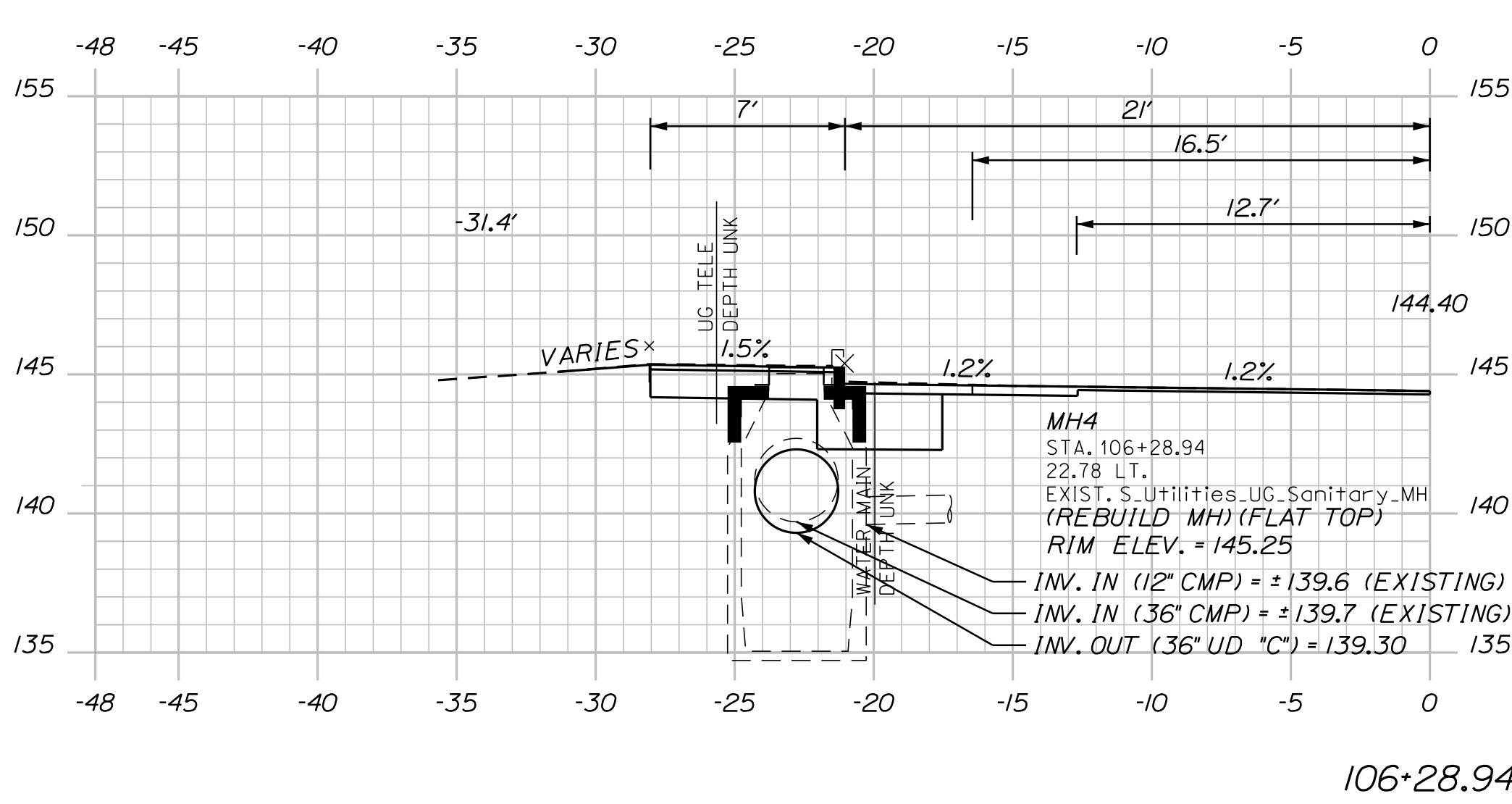
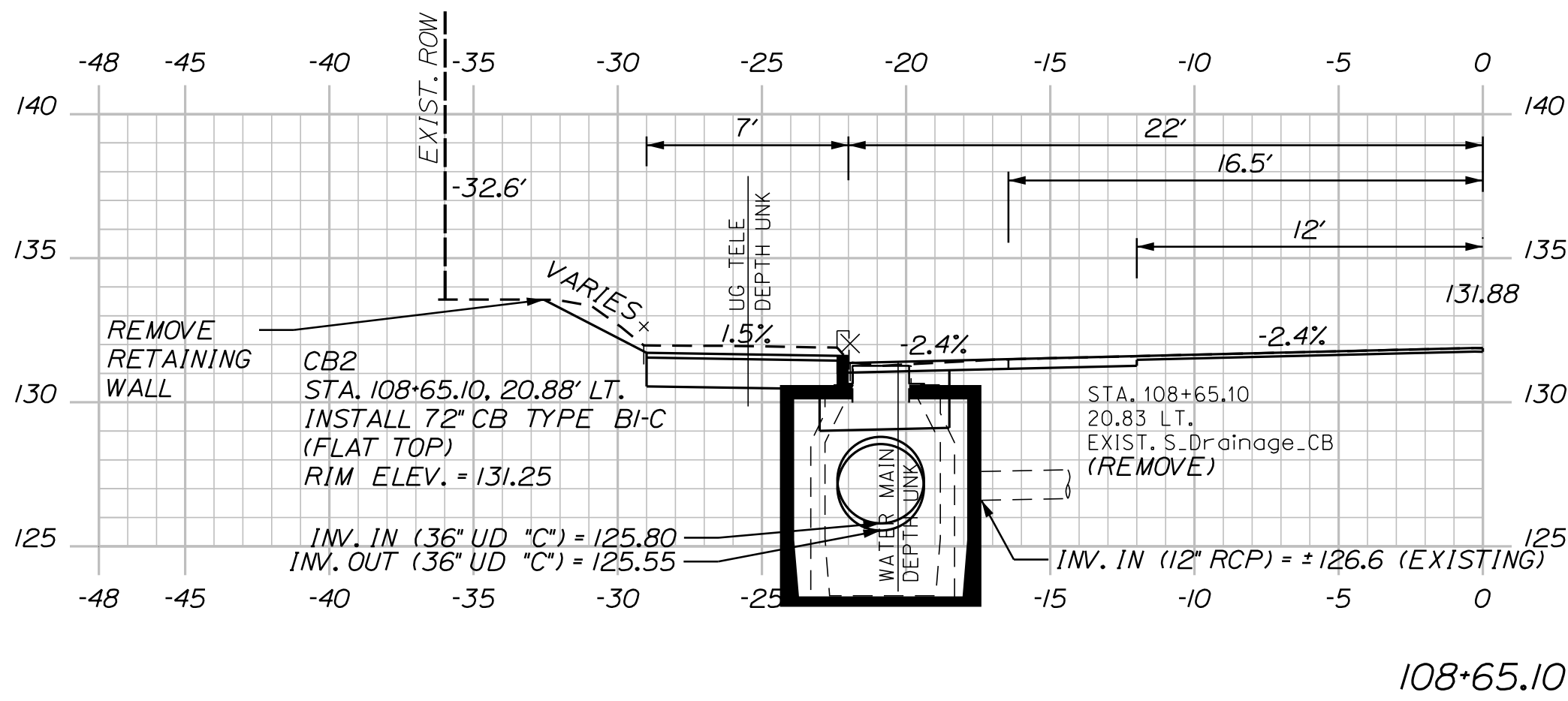
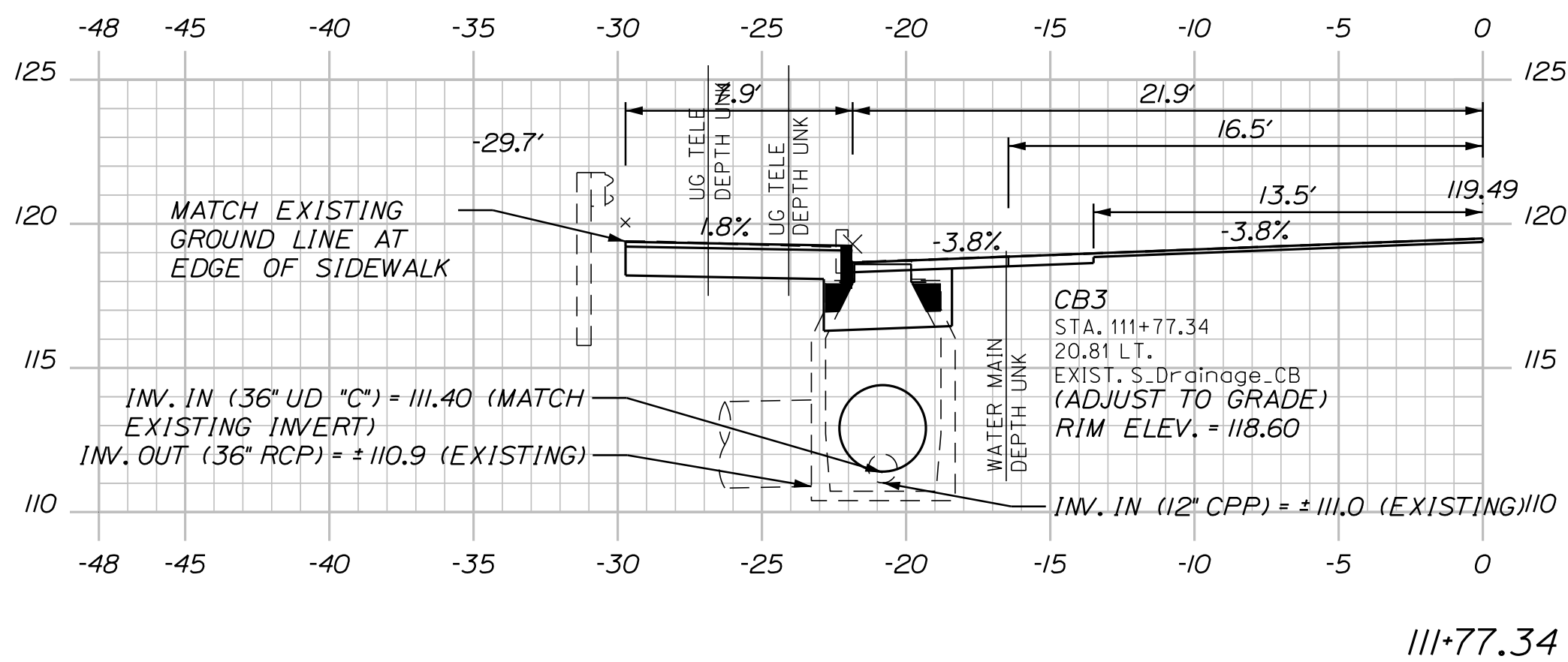
112+00.00
 STA. 111+85.00
 END PIPE REPLACEMENT AND PAVEMENT MILL AND OVERLAY
 LIMIT OF WORK
 END PROJECT WIN 25389.00



Sta. 110+50.00 to Sta. 112+50.00

SHEET NUMBER 12 OF 13	LISBON DRAINAGE IMPROVEMENTS	PROJ. MANAGER R. HODGMAN DESIGN-DETAILED TCL JMC 02\26 CHECKED-REVIEWED TCL DGE 02\26 DESIGN2-DETAILED2 - - - DESIGN3-DETAILED3 - - - REVISIONS 1 - - - REVISIONS 2 - - - REVISIONS 3 - - - REVISIONS 4 - - - FIELD CHANGES - - -	BY DATE DATE DATE	SIGNATURE P.E. NUMBER DATE	STATE OF MAINE DEPARTMENT OF TRANSPORTATION	
	CROSS SECTIONS				WIN 25389.00	
						HIGHWAY PLANS

U:\Maine Department of Transportation\4027_Lisbon Drainage\Z - CAD\00\Highway\Xsect.dgn



Sta. 104+04.75 to Sta. 106+28.94

SHEET NUMBER 13 OF 13	LISBON DRAINAGE IMPROVEMENTS	PROJ. MANAGER R. HODGMAN DESIGN-DETAILED TCL JMC 02\26 CHECKED-REVIEWED TCL DGE 02\26 DESIGN2-DETAILED2 DESIGN3-DETAILED3 REVISIONS 1 REVISIONS 2 REVISIONS 3 REVISIONS 4 FIELD CHANGES	BY DATE SIGNATURE P.E. NUMBER DATE	STATE OF MAINE DEPARTMENT OF TRANSPORTATION	
	CROSS SECTIONS			WIN 25389.00 HIGHWAY PLANS	